

## BLUE NOMAD — VAN DAM SHIPYARD



**Builder:** VAN DAM SHIPYARD

**Year Built:** 1982

**Model:** Cruising Ketch

**Price:** PRICE ON APPLICATION

**Location:** United States

**LOA:** 54' 0" (16.46m)

**Beam:** 15' 0" (4.57m)

**Max Draft:** 7' 3" (2.21m)

**Cruise Speed:** 8 Kts. (9 MPH)

**Max Speed:** 9 Kts. (10 MPH)

Our experienced yacht broker, Andrey Shestakov, will help you choose and buy a yacht that best suits your needs **Blue Nomad — VAN DAM SHIPYARD** from our catalogue. Presently, at **Shestakov Yacht Sales Inc.**, we have a wide variety of yachts available on our sale's list. We also work in close contact with all the big yacht manufacturers from all over the world.

If you would like to buy a yacht **Blue Nomad — VAN DAM SHIPYARD** or would like help answering any questions concerning purchasing, selling or chartering a yacht, please call **+1(954)274-4435**

---

# TABLE OF CONTENTS

---

TABLE OF CONTENTS	2
SPECIFICATIONS	3
Overview	3
Basic Information	3
Dimensions	3
Speed, Capacities and Weight	3
Accommodations	3
Hull and Deck Information	3
Engine Information	4
DETAILED INFORMATION	5
Walkthrough	5
Galley	5
Deck Equipment	6
Cockpit	6
Electronics	6
Mechanical	7
Electrical Equipment	7
Safety	7
Disclaimer	8
Exclusions	8
Disclaimer	8
PHOTOS	9
CONTACTS	16
Contact details	16
Telephones	16
Office hours	16
Address	16

---

# SPECIFICATIONS

---

## Overview

---

54 Van Dam Cruising Ketch 1982 - Newly Offered for Sale! Boat is in poor condition but has \$100,000 worth of standing rigging.

## Basic Information

---

**Category:** Cruising Ketch

**Model Year:** 1982

**Year Built:** 1982

**Country:** United States

## Dimensions

---

**LOA:** 54' 0" (16.46m)

**Beam:** 15' 0" (4.57m)

**Max Draft:** 7' 3" (2.21m)

## Speed, Capacities and Weight

---

**Cruise Speed:** 8 Kts. (9 MPH)

**Max Speed:** 9 Kts. (10 MPH)

**Water Capacity:** 500 Gallons

**Holding Tank:** 20 Gallons

**Fuel Capacity:** 500 Gallons

## Accommodations

---

**Total Cabins:** 3

**Total Heads:** 3

## Hull and Deck Information

---

**Hull Material:** Steel

---

## Engine Information

---

**Manufacturer:** Volvo Penta

**Model:** MD70C

**Engine Type:** Inboard

**Fuel Type:** Diesel

---

# DETAILED INFORMATION

---

## Walkthrough

---

Blue Nomad has a 3 Stateroom layout with 2 heads and a full salon.

Leaving the cockpit area and moving forward and down the companionway steps is the main salon. The dining area is to port, furnished with a large rosewood dining table accompanied by C-shaped, cushioned seating. Adjacent to the dining area, starboard side, is the navigation table with large chart table, storage inside, and large pilot seat.

Leaving the main salon area and going forward through the corridor are port and starboard staterooms, furnished with over and under berths. The lower berths have drawers below and there are hanging lockers. There are two (2) opening port lights in the port and starboard staterooms. Both staterooms have separate ensuite baths with showers and Jabsco manual flush heads. There are opening hatches and opening port lights in both ensuite baths. The chain locker can be accessed through the starboard head forward bulkhead hatch.

The galley area is located starboard side and is accessed from the main salon aft, starboard side and stepping down. Further aft is a large working Corian countertop with a drop in storage compartment, storage cabinetry, and drawers. Proceeding aft down the starboard corridor is the aft stateroom furnished with double berth to the portside. There is also a single berth positioned athwartship, along the base of the transom, and a sitting chair built in between the portside berth and starboard side cabinetry bulwarks. There is a desk and stool on the starboard side. There are two (2) port and starboard opening port lights and an opening hatch above. The aft stateroom has an ensuite bath with vanity with sink bowl, shower stall with opening hatch above, and a Jabsco manual flush toilet.

Absolutely elegant rosewood interior, as would befit a pedigree yacht such as this. (2) Cruiseair 16,000 BTU reverse cycle AC units 2011.

## Galley

---

- Functional galley whether at sea or at anchor. Features include:
- Force 10 4 burner propane stove and oven, gimbaled with solenoid
- GE microwave oven
- Double integral Corian sinks with filtered drinking water spigots
- Refrigeration: 24v holding plate system. Large boxes, both top loading and front loading. Freezer: Large top loading box located under navigator's seat
- 24v Echotech 38 GPH water maker with dedicated stainless steel water tank
- Drinking water to galley plumbed through coils in refrigerator to provide chilled water
- Hot water heater, 20 gal
- Numerous lockers and cabinets for storage

- Coffee maker

---

## Deck Equipment

---

**Blue Nomad** is a center cockpit ketch well designed by Robert van Dam. Features include:

- Sparcraft alloy masts and booms stepped on deck Air draft is 63.5 feet
- SS standing rigging, Dacron running rigging
- North mainsail with Dutchman system (2007)
- North mizzen (2007), 130% genoa , staysail
- Some older sails on board
- Canvas covers for main and windlass
- Harken roller furlers
- Twin downwind poles
- Muir Electric windlass with 75lb CQR with 300' of 1/2" chain
- Danforth spare anchor
- SS pushpit and SS pulpit, mast pulpit
- Double lifelines
- 6 sheet winches, 6 halyard winches 1 davit winch SS davits
- Passarelle
- Dinghy cradle, holds Carolina skiff
- Outboard bracket
- SS BBQ
- 4 solar panels, 360 watts at 24V
- Rutland 913 wind generator on mizzen mast

---

## Cockpit

---

The cockpit on **Blue Nomad** is enclosed with a semi doghouse dodger where you are well protected from the elements when running the boat. There are large windows for good vision and solar panels on the top. Other features include:

- Teak steering wheel
- Deep well protected cockpit
- 6 halyard winches, 6 sheet winches, 1 davit winch
- Electronics are to the left of the companionway, storage to the right
- Custom cockpit table
- Louvered teak doors

---

## Electronics

---

- The electronics were replaced in 2011
- Simrad GPS/chartplotter
- Simrad AP24 autopilot
- Simrad BR 24/Northstar radar
- Simrad IS 20 wind, depth, speed
- EchoPilot forward looking sonar
- Ritchie compass
- Vesper Marine AIS
- Standard Horizon Matrix AIS VHF
- Icom IC710 SSB
- Iridium sat phone
- Pactor 3 weatherfax

---

## Mechanical

- Volvo Penta MD70C 145 hp diesel engine (5890 hrs)
- Onan Generator , 8MDKDBIB 240/120v (912 hrs)
- Side Power bow thruster
- EchoTech 38 gph water maker
- Marine Air Systems air conditioning
- 70mm stainless steel shaft with 3 blade prop
- Racor fuel filter system
- Custom holding plate refrigeration
- Approved toilet systems with holding tanks

---

## Electrical Equipment

- 8 KW Onan generator Sentry 24V60A
- 9 X 12v batteries
- Outback 24/120/30 amp inverter
- Maytag washer/ Maytag dryer - 2 separate units
- Custom electric panel

---

## Safety

- 8 man Avon liferaft, needs inspection
- Navigation lights
- Anchor light
- Deck lights
- 2 horseshoe Life rings
- Lifesling

- MOB pole
- Numerous life vests
- FE 241 engine room fire extinguisher
- 3 X portable extinguishers
- Carolina skiff with 5 hp Mariner outboard (2011)

---

## Disclaimer

---

The Company offers the details of this vessel in good faith but cannot guarantee or warrant the accuracy of this information nor warrant the condition of the vessel. A buyer should instruct his agents, or his surveyors, to investigate such details as the buyer desires validated. This vessel is offered subject to prior sale, price change, or withdrawal without notice.

---

## Exclusions

---

Owner's personal belongings.

---

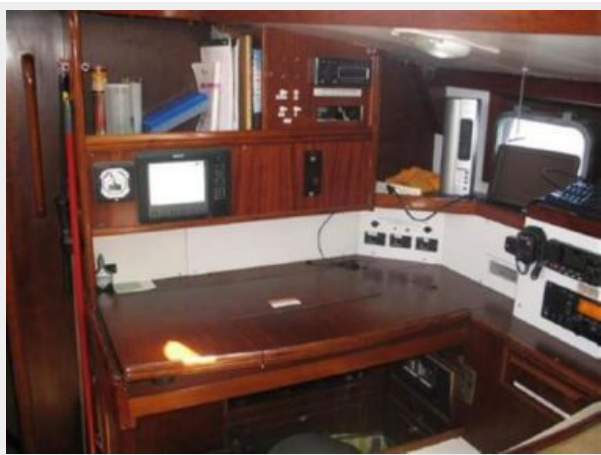
## Disclaimer

---

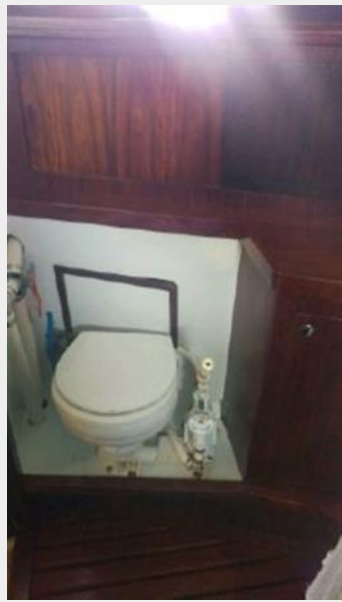
The Company offers the details of this vessel or yacht in good faith but cannot guarantee or warrant the accuracy of this information nor warrant the condition of the vessel. A buyer should instruct his representatives, agents, or his surveyors, to investigate such details as the buyer desires validated. This vessel or yacht is offered subject to prior sale, price change, or withdrawal without notice.

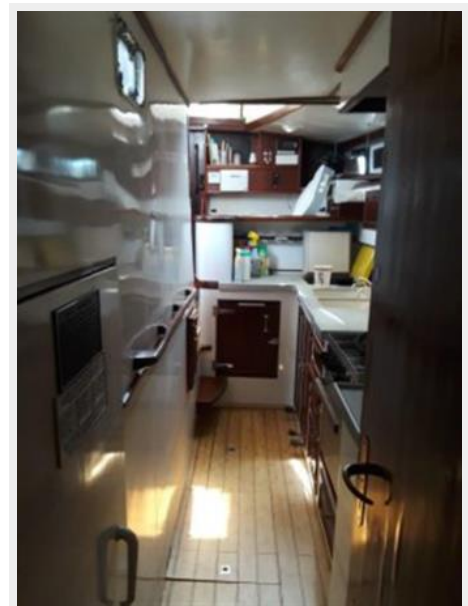


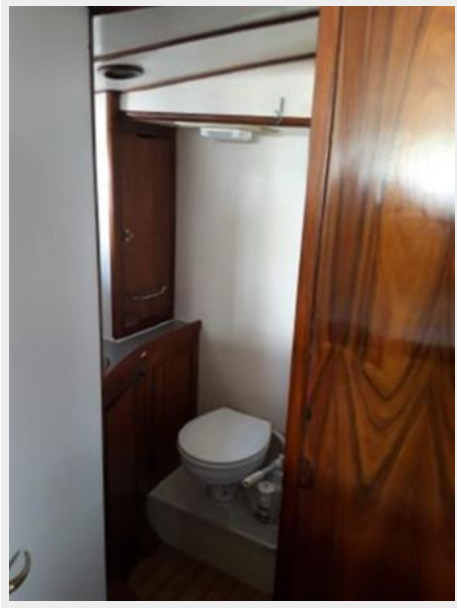
# PHOTOS















# CONTACTS

---

Andrey Shestakov, leading yacht broker of the sales department of Shestakov Yacht Sales Inc. Shestakov Yacht Sales Inc., the official representative of the Miami/Fort Lauderdale FL headquarters.

## Contact details

---

Email: [andrey@shestakovyachtsales.com](mailto:andrey@shestakovyachtsales.com)

Web: [shestakovyachtsales.com/en/](http://shestakovyachtsales.com/en/)

## Telephones

---

USA: +1(954)274-4435

## Office hours

---

Monday – Saturday: **9:00 - 21:00** EDT

Sunday: **closed**

## Address

---



Harbour Towne Marina, 850 NE 3rd St,  
STE 213, Dania, FL 33004