

BLUE NOMAD — VAN DAM SHIPYARD



Судостроитель: VAN DAM SHIPYARD

Год постройки: 1982

Модель: Крейсерский кеч

Цена: **ЦЕНА ЯХТЫ ПО ЗАПРОСУ**

Местонахождение: United States

Длина общая: 54' 0" (16.46m)

Ширина: 15' 0" (4.57m)

Макс. осадка: 7' 3" (2.21m)

Крейс. скорость: 8 Kts. (9 MPH)

Макс. скорость: 9 Kts. (10 MPH)

Купить **Blue Nomad — VAN DAM SHIPYARD** а также выбрать подходящую вам яхту из нашего каталога яхт вам поможет опытный яхтенный брокер Андрей Шестаков. На сегодняшний день компания **Shestakov Yacht Sales Inc.** имеет большое количество яхт в собственном списке продаж, а также тесно сотрудничает со всеми крупными яхтенными производителями по всему миру.

Для того чтобы купить яхту **Blue Nomad — VAN DAM SHIPYARD** а также проконсультироваться по любому вопросу связанному с покупкой, продажей, чартером яхт позвоните по телефону **+7(918)465-66-44**.

ОГЛАВЛЕНИЕ

ОГЛАВЛЕНИЕ	2
ХАРАКТЕРИСТИКИ	3
Обзор	3
Основная информация	3
Размеры	3
Скорость, вместимость и масса	3
Размещение	3
Корпус и палуба	3
Информация о двигателе	4
ПОДРОБНОЕ ОПИСАНИЕ	5
Walkthrough	5
Galley	5
Deck Equipment	6
Cockpit	6
Electronics	6
Mechanical	7
Electrical Equipment	7
Safety	7
Disclaimer	8
Исключения	8
Отказ от ответственности	8
ФОТОГРАФИИ	9
КОНТАКТЫ	16
Контактная информация	16
Телефоны	16
Время работы	16
Адрес	16

ХАРАКТЕРИСТИКИ

Обзор

54 Van Dam Cruising Ketch 1982 - Newly Offered for Sale! Boat is in poor condition but has \$100,000 worth of standing rigging.

Основная информация

Тип судна: Крейсерский кеч

Модельный год: 1982

Год постройки: 1982

Страна: United States

Размеры

Длина общая: 54' 0" (16.46m)

Ширина: 15' 0" (4.57m)

Макс. осадка: 7' 3" (2.21m)

Скорость, вместимость и масса

Крейс. скорость: 8 Kts. (9 MPH)

Макс. скорость: 9 Kts. (10 MPH)

Вместимость воды: 500 Gallons

Вместимость сточного бака: 20 Gallons

Объем топливного бака: 500 Gallons

Размещение

Всего кают: 3

Всего ком. состава: 3

Корпус и палуба

Материал корпуса: Steel

Информация о двигателе

Производитель: Volvo Penta

Модель: MD70C

Тип двигателя: Inboard

Тип топлива: Diesel

ПОДРОБНОЕ ОПИСАНИЕ

Walkthrough

Blue Nomad has a 3 Stateroom layout with 2 heads and a full salon.

Leaving the cockpit area and moving forward and down the companionway steps is the main salon. The dining area is to port, furnished with a large rosewood dining table accompanied by C-shaped, cushioned seating. Adjacent to the dining area, starboard side, is the navigation table with large chart table, storage inside, and large pilot seat.

Leaving the main salon area and going forward through the corridor are port and starboard staterooms, furnished with over and under berths. The lower berths have drawers below and there are hanging lockers. There are two (2) opening port lights in the port and starboard staterooms. Both staterooms have separate ensuite baths with showers and Jabsco manual flush heads. There are opening hatches and opening port lights in both ensuite baths. The chain locker can be accessed through the starboard head forward bulkhead hatch.

The galley area is located starboard side and is accessed from the main salon aft, starboard side and stepping down. Further aft is a large working Corian countertop with a drop in storage compartment, storage cabinetry, and drawers. Proceeding aft down the starboard corridor is the aft stateroom furnished with double berth to the portside. There is also a single berth positioned athwartship, along the base of the transom, and a sitting chair built in between the portside berth and starboard side cabinetry bulwarks. There is a desk and stool on the starboard side. There are two (2) port and starboard opening port lights and an opening hatch above. The aft stateroom has an ensuite bath with vanity with sink bowl, shower stall with opening hatch above, and a Jabsco manual flush toilet.

Absolutely elegant rosewood interior, as would befit a pedigree yacht such as this. (2) Cruiseair 16,000 BTU reverse cycle AC units 2011.

Galley

- Functional galley whether at sea or at anchor. Features include:
- Force 10 4 burner propane stove and oven, gimbaled with solenoid
- GE microwave oven
- Double integral Corian sinks with filtered drinking water spigots
- Refrigeration: 24v holding plate system. Large boxes, both top loading and front loading. Freezer: Large top loading box located under navigator's seat
- 24v Echotech 38 GPH water maker with dedicated stainless steel water tank
- Drinking water to galley plumbed through coils in refrigerator to provide chilled water
- Hot water heater, 20 gal
- Numerous lockers and cabinets for storage

- Coffee maker

Deck Equipment

Blue Nomad is a center cockpit ketch well designed by Robert van Dam. Features include:

- Sparcraft alloy masts and booms stepped on deck Air draft is 63.5 feet
- SS standing rigging, Dacron running rigging
- North mainsail with Dutchman system (2007)
- North mizzen (2007), 130% genoa , staysail
- Some older sails on board
- Canvas covers for main and windlass
- Harken roller furlers
- Twin downwind poles
- Muir Electric windlass with 75lb CQR with 300' of 1/2" chain
- Danforth spare anchor
- SS pushpit and SS pulpit, mast pulpit
- Double lifelines
- 6 sheet winches, 6 halyard winches 1 davit winch SS davits
- Passarelle
- Dinghy cradle, holds Carolina skiff
- Outboard bracket
- SS BBQ
- 4 solar panels, 360 watts at 24V
- Rutland 913 wind generator on mizzen mast

Cockpit

The cockpit on **Blue Nomad** is enclosed with a semi doghouse dodger where you are well protected from the elements when running the boat. There are large windows for good vision and solar panels on the top. Other features include:

- Teak steering wheel
- Deep well protected cockpit
- 6 halyard winches, 6 sheet winches, 1 davit winch
- Electronics are to the left of the companionway, storage to the right
- Custom cockpit table
- Louvered teak doors

Electronics

- The electronics were replaced in 2011
- Simrad GPS/chartplotter
- Simrad AP24 autopilot
- Simrad BR 24/Northstar radar
- Simrad IS 20 wind, depth, speed
- EchoPilot forward looking sonar
- Ritchie compass
- Vesper Marine AIS
- Standard Horizon Matrix AIS VHF
- Icom IC710 SSB
- Iridium sat phone
- Pactor 3 weatherfax

Mechanical

- Volvo Penta MD70C 145 hp diesel engine (5890 hrs)
- Onan Generator , 8MDKDBIB 240/120v (912 hrs)
- Side Power bow thruster
- EchoTech 38 gph water maker
- Marine Air Systems air conditioning
- 70mm stainless steel shaft with 3 blade prop
- Racor fuel filter system
- Custom holding plate refrigeration
- Approved toilet systems with holding tanks

Electrical Equipment

- 8 KW Onan generator Sentry 24V60A
- 9 X 12v batteries
- Outback 24/120/30 amp inverter
- Maytag washer/ Maytag dryer - 2 separate units
- Custom electric panel

Safety

- 8 man Avon liferaft, needs inspection
- Navigation lights
- Anchor light
- Deck lights
- 2 horseshoe Life rings
- Lifesling

- MOB pole
- Numerous life vests
- FE 241 engine room fire extinguisher
- 3 X portable extinguishers
- Carolina skiff with 5 hp Mariner outboard (2011)

Disclaimer

The Company offers the details of this vessel in good faith but cannot guarantee or warrant the accuracy of this information nor warrant the condition of the vessel. A buyer should instruct his agents, or his surveyors, to investigate such details as the buyer desires validated. This vessel is offered subject to prior sale, price change, or withdrawal without notice.

Исключения

При продаже яхты исключаются личные вещи владельца.

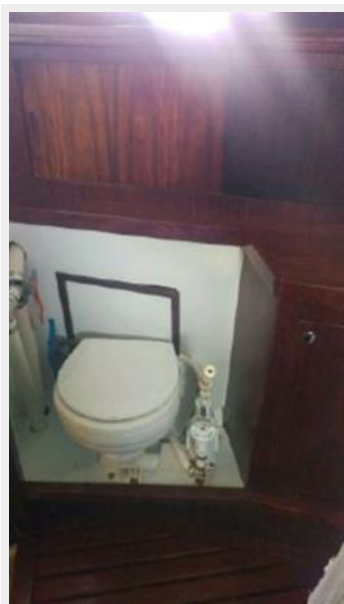
Отказ от ответственности

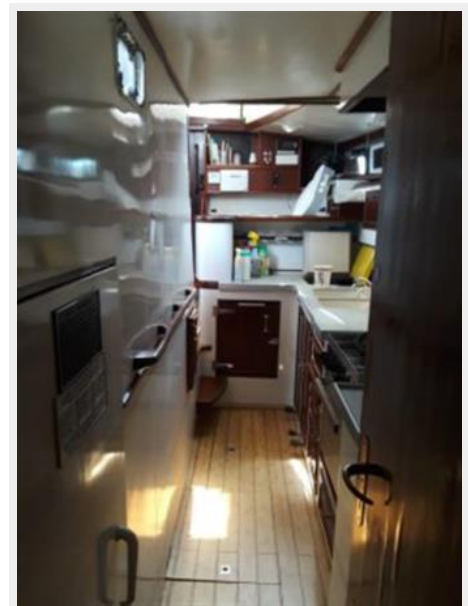
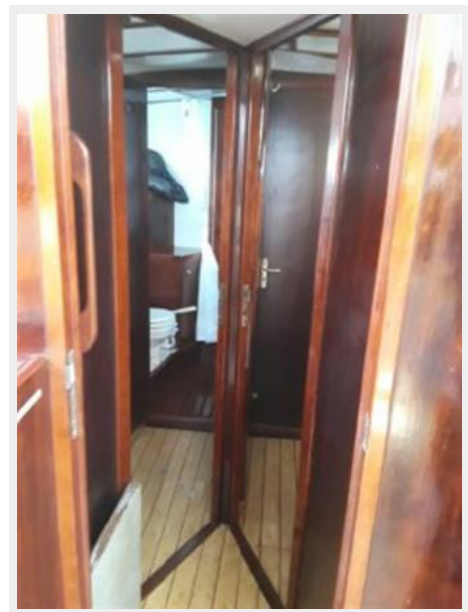
Компания предоставляет описание судна или яхты добросовестно, но не может гарантировать точность этой информации, а также не ручается за техническое состояние. Покупатель должен проинструктировать своих агентов или оценщиков исследовать представленную информацию более подробно, по собственному желанию. Продажа судна или яхты, изменение цены или снятие с продажи будет происходить без предварительного уведомления.

ФОТОГРАФИИ

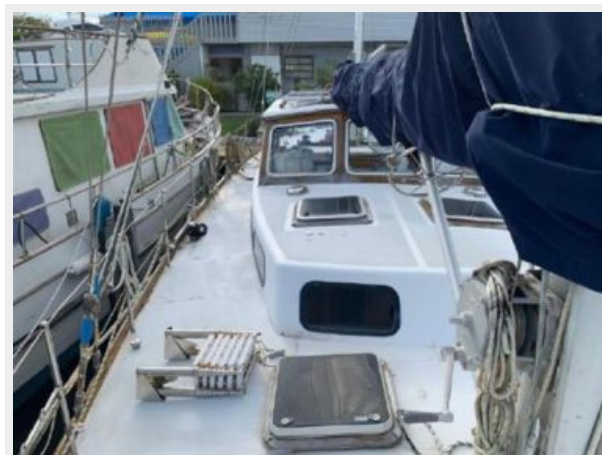














КОНТАКТЫ

Андрей Шестаков (Andrey Shestakov) – ведущий яхтенный брокер отдела продаж яхт и судов компании Shestakov Yacht Sales Inc. Официальный представитель Shestakov Yacht Sales Inc. для русскоговорящих клиентов в центральном офисе компании в Майами/Форт Лодердейл/Флорида/США.

Контактная информация

Email: andrey@shestakovyachtsales.com

Web: shestakovyachtsales.com

Телефоны

Краснодарский край: **+7(918)465-66-44**

США, Майами, Флорида: **+1(954)274-4435**

Время работы

Понедельник – Суббота: **9:00 - 21:00**
EDT

Воскресенье: **Закрето**

Адрес



Harbour Towne Marina, 850 NE 3rd St,
STE 213, Dania, FL 33004