

XT-SEA — HYDRA-SPORTS



Builder: [Hydra-Sports](#)

Year Built: 2008

Model: Sport Fisherman

Price: PRICE ON APPLICATION

Location: United States

LOA: 29' 0" (8.84m)

Beam: 9' 8" (2.95m)

Min Draft: 1' 10" (0.56m)

Cruise Speed: 32 Kts. (37 MPH)

Max Speed: 45 Kts. (52 MPH)

Our experienced yacht broker, Andrey Shestakov, will help you choose and buy a yacht that best suits your needs **XT-SEA — Hydra-Sports** from our catalogue. Presently, at Shestakov Yacht Sales Inc., we have a wide variety of yachts available on our sale's list. We also work in close contact with all the big yacht manufacturers from all over the world.

If you would like to buy a yacht **XT-SEA — Hydra-Sports** or would like help answering any questions concerning purchasing, selling or chartering a yacht, please call **+1(954)274-4435**

TABLE OF CONTENTS

TABLE OF CONTENTS	2
SPECIFICATIONS	5
Overview	5
Basic Information	5
Dimensions	5
Speed, Capacities and Weight	5
Accommodations	6
Hull and Deck Information	6
Engine Information	6
DETAILED INFORMATION	7
Features	7
Exclusions	7
Disclaimer	7
PHOTOS	8
Full Enclosure + hard top	8
Roomy cockpit	8
Bow view w/ 23% deep V entry	8
E-Tec engines	8
Stb. view excellent gelcoat finish	8
Boat sunbrella storage cover	8
Transom insulated fish box	9
Stb rear transom	9
Transom wash down compartment	9
Stb. side swim platform	9
Port side swim platform + transom door	9
Transom fold down seat	9
Stb rear transom	10
Engine fuel primer compartment	10

Transom fold up seat	10
Stb side bait prep center + Livewell	10
Port facing aft seat w/ insulated Storage	10
35 gallon bait well, stb cockpit	10
Port aft facing seat w/ insulated Storage	11
Cockpit looking forward	11
Ceramic glass cook top	11
Tackle locker under helm seat	11
Insulated cooler under seat, port cockpit	11
Helm	11
Over heat electronics box	12
Overhead life jacket storage+rod holders	12
Helm seat	12
Battery select switches under seat	12
Companion seat	12
Bow cabin V berth	12
Storage locker	13
Rod storage in cabin port + stb	13
Galley	13
Galley	13
In cabin looking out	13
Entrance to head + storage locker	13
Storage locker	14
Mid Cabin double berth	14
Head vacu-flush	14
Head Vanity	14
Cabin access to helm wiring	14
Breaker panel in cabin	14
Head shower + sink sump pump	15

Cockpit generator compartment	15
Generator	15
CONTACTS	16
Contact details	16
Telephones	16
Office hours	16
Address	16

SPECIFICATIONS

Overview

A MUST SEE.....LIKE NEW AT A USED PRICE.... This popular big water express is a match for anything in her class. Roomy fishing cockpit, aggressive deep V hull, excellent range, dramatic styling and walk thru windshield. The 2900VX boasts a Kevlar reinforced hull and performs with a soft as butter ride. The integrated liner and stringer system make it more rigged and more solid. Double clamp hoses, submersible rated electrical connectors and stainless steel from bow rails to propellers ensure it's always ready to do business in the most difficult conditions. As you would expect of this 2900VX comes with a boatload of functional features for the serious fishermen or the most avid boater. It doesn't get any better!!

Basic Information

Category: Sport Fisherman

Model Year: 2008

Year Built: 2008

Country: United States

Dimensions

LOA: 29' 0" (8.84m)

Beam: 9' 8" (2.95m)

Min Draft: 1' 10" (0.56m)

Clearance: 8' 6" (2.59m)

Speed, Capacities and Weight

Cruise Speed: 32 Kts. (37 MPH)

Cruise Speed RPM: 4000 Kts.

Max Speed: 45 Kts. (52 MPH)

Displacement: 8000 Pounds

Water Capacity: 20 Gallons

Holding Tank: 15 Gallons

Fuel Capacity: 300 Gallons

Accommodations

Total Cabins: 2

Total Berths: 4

Total Heads: 1

Hull and Deck Information

Hull Material: Fiberglass

Hull Configuration: Deep Vee

Hull Finish: Aluminum

Engine Information

Engines: 2

Manufacturer: Evinrude

Model: 250 E-TEC 2 stroke

Engine Type: Outboard

Fuel Type: Gas

DETAILED INFORMATION

Features

Electronics Description Raymarine E120 V5.69 GPS map MFD with navionics platinum charts Raystar 125 GPS receiver Raymarine Radome radar Raymarine DSM300 digital sounder Airmar M260 in-hull 1KW transducer Standard Horizon GTX1700 VHF with GPS/DSC new (2018) Ritchie compass Clarion AM/FM/CD (new speakers 2019) 5 Batteries **Additional Information** Lewmar V700 windlass Full helm enclosure isinglass Fiberglass hard top Generator Kohler 5K New thru-hull hoses and generator exhaust hose(2018) Air Conditioning/heat 7000 BTU Integrated swim platform Outriggers Remote spotlight/flood light Ocean LED A8 underwater lights (3) Trim tabs w/lighted level controls Sea Star hydraulic steering w/power assist (new helm pump) Vacu-flush head w/tank watch 4 monitor Tappan microwave oven Kenyon ceramic glass cook Top Norcold AC/DC refrigerator Fresh and raw water wash down Tankless instant water heater Teak and holly cabin sole Walk through windshield bow access Side deck grab rails Large live well lighted Fish boxes transom bait prep station Removable cabin table V-berth cabin filler cushion Drop down cabin port and stb. bunks Collapsible cockpit transom seating Stainless steel anchor w/chain and line Cabin and deck fishing rod storage Tackle draws on deck Pop up stainless steel cleats Live well 35 gallons, Lighted Center cabin under helm double berth

Exclusions

Owner's personal belongings.

Disclaimer

The Company offers the details of this vessel or yacht in good faith but cannot guarantee or warrant the accuracy of this information nor warrant the condition of the vessel. A buyer should instruct his representatives, agents, or his surveyors, to investigate such details as the buyer desires validated. This vessel or yacht is offered subject to prior sale, price change, or withdrawal without notice.

PHOTOS

Full Enclosure + hard top



Roomy cockpit



E-Tec engines



Bow view w/ 23% deep V entry



Stb. view excellent gelcoat finish



Boat sunbrella storage cover



Transom insulated fish box



Stb rear transom



Transom wash down compartment



Stb. side swim platform



Port side swim platform + transom door



Transom fold down seat



Stb rear transom



Engine fuel primer compartment



Transom fold up seat



Stb side bait prep center + Livewell



Port facing aft seat w/ insulated Storage



35 gallon bait well, stb cockpit



Port aft facing seat w/ insulated Storage



Cockpit looking forward



Ceramic glass cook top



Tackle locker under helm seat



Insulated cooler under seat, port cockpit



Helm



Over heat electronics box



Overhead life jacket storage+rod holders



Helm seat



Battery select switches under seat



Companion seat



Bow cabin V berth



Storage locker



Rod storage in cabin port + stb



Galley



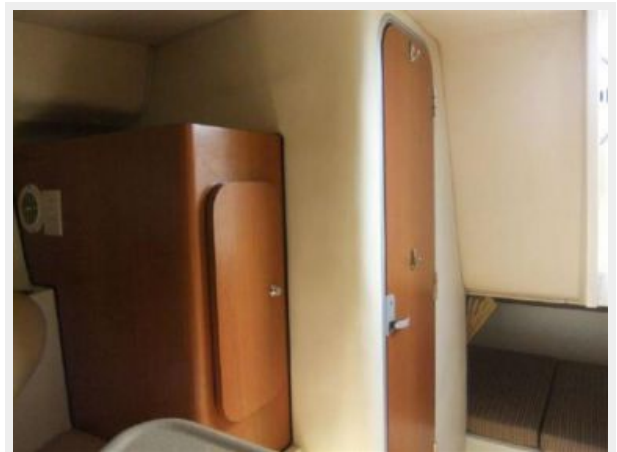
Galley



In cabin looking out



Entrance to head + storage locker



Storage locker



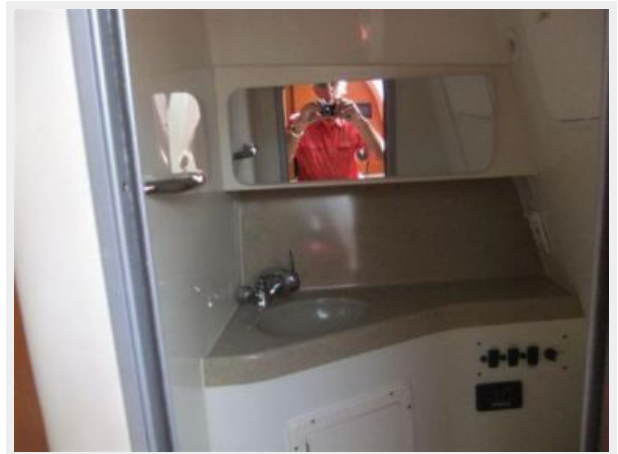
Mid Cabin double berth



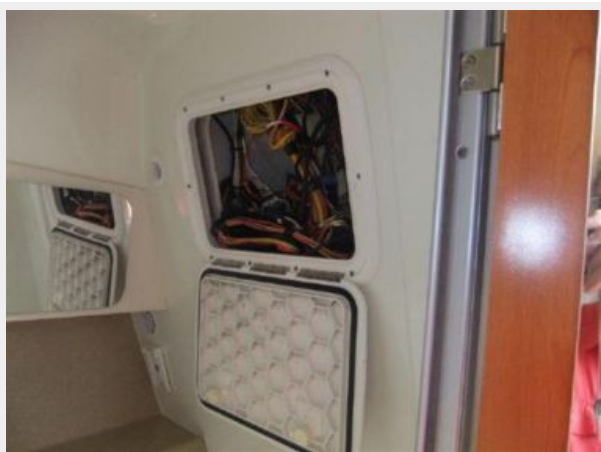
Head vacu-flush



Head Vanity



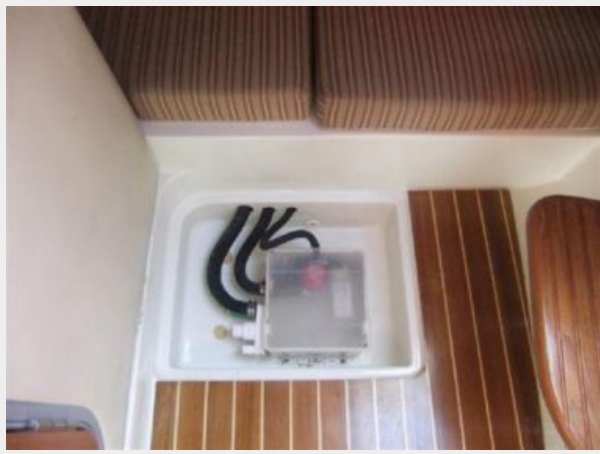
Cabin access to helm wiring



Breaker panel in cabin



Head shower + sink sump pump



Cockpit generator compartment



Generator



CONTACTS

Andrey Shestakov, leading yacht broker of the sales department of Shestakov Yacht Sales Inc. Shestakov Yacht Sales Inc., the official representative of the Miami/Fort Lauderdale FL headquarters.

Contact details

Email: andrey@shestakovyachtsales.com

Web: shestakovyachtsales.com/en/

Telephones

USA: +1(954)274-4435

Office hours

Monday – Saturday: **9:00 - 21:00** EDT

Sunday: **closed**

Address



Harbour Towne Marina, 850 NE 3rd St,
STE 213, Dania, FL 33004