

NUMARINE 32XP HULL #5 — NUMARINE



Судостроитель: NUMARINE

Год постройки: 2022

Модель: SHELBY

Цена: ЦЕНА ЯХТЫ ПО ЗАПРОСУ

Местонахождение: Turkey

Длина общая: 105' 0" (32.00m)

Ширина: 26' 3" (8.00m)

Мин. осадка: 8' 0" (2.44m)

Макс. осадка: 8' 6" (2.59m)

Крейс. скорость: 12 Kts. (14 MPH)

Макс. скорость: 14 Kts. (16 MPH)

Купить Numarine 32XP Hull #5 — NUMARINE а также выбрать подходящую вам яхту из нашего каталога яхт вам поможет опытный яхтенный брокер Андрей Шестаков. На сегодняшний день компания Shestakov Yacht Sales Inc. имеет большое количество яхт в собственном списке продаж, а также тесно сотрудничает со всеми крупными яхтенными производителями по всему миру.

Для того чтобы купить яхту Numarine 32XP Hull #5 — NUMARINE а также проконсультироваться по любому вопросу связанному с покупкой, продажей, чартером яхт позвоните по телефону **+7(918)465-66-44**.

ОГЛАВЛЕНИЕ

ОГЛАВЛЕНИЕ	2
ХАРАКТЕРИСТИКИ	3
Обзор	3
Основная информация	3
Размеры	4
Скорость, вместимость и масса	4
Размещение	4
Корпус и палуба	4
Информация о двигателе	5
ПОДРОБНОЕ ОПИСАНИЕ	6
Overview	6
Interior Walk Through	6
Exterior Deck Arrangement	13
Main Features & Options	14
Technical Details	16
History	16
Исключения	17
Отказ от ответственности	17
ФОТОГРАФИИ	18
КОНТАКТЫ	25
Контактная информация	25
Телефоны	25
Время работы	25
Адрес	25

ХАРАКТЕРИСТИКИ

Обзор

After the successful sale of Hull #4 which we just delivered to her new owners in Fort Lauderdale, Hull #5 is now available with a Summer 2022 delivery. Hull #4 featured a custom interior by award winning Italian design firm Hot Lab and Hull #5 offers the same style & sophistication.

- New Construction - Steel Hull/Full Displacement - 4,000nm Range

This is a full displacement, steel hull/composite superstructure explorer yacht that has an impressive 4,000nm range. She is powered by twin MAN 800hp engines that give her a maximum speed of 14 knots, a cruise speed of 12 knots, and at an economical speed of 9 knots your range exceeds 4,000nm.

Her large open upper deck with 2,500kg davit allows you to carry up to a 8.5m tender plus additional water sports toys. (Hull #2 carries a 28ft Axopar on deck) 5 or 6 cabin layouts available. 6 cabin layout includes a private owners deck where the sky lounge is typically located as featured on Hull #4 now named '7 Diamonds'. The 5 cabin layout has the master forward on the main deck.

A new layout created for North American clients features a country kitchen forward on the main deck allowing a more casual gathering place for guests and crew for meals.

Основная информация

Тип судна: SHELBY

Подкатегория: Expedition

Модельный год: 2022

Год постройки: 2022

Страна: Turkey

Верх: Hardtop

Открытая палуба мостика: Да

Размеры

Длина общая: 105' 0" (32.00m)

Ширина: 26' 3" (8.00m)

Мин. осадка: 8' 0" (2.44m)

Макс. осадка: 8' 6" (2.59m)

Длина привального бруса: 106' 0"
(32.31m)

Скорость, вместимость и масса

Крейс. скорость: 12 Kts. (14 MPH)

Дальность на крейсерской скорости:
4000

Макс. скорость: 14 Kts. (16 MPH)

Водоизмещение: 255 Pounds

Чистый вес: 333 Pounds

Вместимость воды: 792.516156 Gallons

Объем топливного бака: 2899.816614804
Gallons

Размещение

Всего кают: 5

Спальные места: 10

Всего ком. состава: 6

Каюта капитана: Да

Каюты экипажа: 3

Койки экипажа: 4

Спальных мест экипажа: 6

Комм. состав экипажа: 3

Корпус и палуба

Материал корпуса: Steel

Комплектация корпуса: Displacement w/
Bulbous Bow

Информация о двигателе

Двигатели: 2

Производитель: MAN

Модель: D2868 LE 425 800bhp @2100rpm **Тип двигателя:** Inboard

Тип топлива: Diesel

ПОДРОБНОЕ ОПИСАНИЕ

Overview

The 2020 Numarine 32XP Hull #5 is available with a 16 month delivery period.

For interior decor the shipyard has contracted the award winning Italian design firm HotLab featuring materials from Armani Casa & custom marbles in greens & blues.

Since being introduced only 3 years ago the Numarine XP series has become an award winning design and one of the most stylish expedition yachts on the market that not only looks good but has performance to back it up & the ability to carry a large number of tenders & toys on her upper deck. This is a full displacement, steel hull/composite superstructure explorer yacht that has an impressive 4,000nm range. She is powered by twin Caterpillar D2868 LE 425 800bhp @2100rpm that give her a maximum speed of 14 knots, a cruise speed of 12 knots, and at an economical speed of 9 knots your range exceeds 4,000nm. Her large open upper deck with 2,500kg davit allows you to carry a large tender plus additional water sports toys. She sleeps 12 guests in 6 cabins including an on-deck master & VIP cabin or second master as I like to call it on the upper deck with 4 remaining guest cabins located below deck.

Interior Walk Through

OWNERS ACCOMMODATION

Located on the upper deck the full beam accommodation comprises of a large sleeping area with SuperKing size bed backed by large wardrobes which create a personal dressing area. The bed faces the aft sliding glass doors with view across the upper deck and into the horizon. The entry is from the upper lobby passing the ample wardrobe and storage area with fitted safety box, mini bar and dumb waiter into the aft facing room.

There is a make-up table with chair on the port side with cupboards and a small seating area, to starboard is the large 65" wall mounted TV fitted in the aft corner viewable from the bed or the port seating area and a second bench seat against the starboard side, connected to the TV is the Marantz surround sound cinema system with Bowers & Wilkins speakers which also doubles as the music system for the owners enjoyment. Apple TV, Bluray player, Sonos interface and satellite receiver are all connected to this system. Music can also be played outside on the upper deck via German Maestro Marine speakers for relaxing breakfasts or romantic sunsets.

The side windows have two opening sections one per side to allow perfect ventilation when air-conditioning is not desired, all windows and sliding door have black-out blinds in addition to acetic blinds with concealed lighting producing a relaxing ambient feeling.

Overhead lighting is concealed 24v DC LED type around the edges of the room with a recessed lighting feature above the bed. Accent lighting below the bed and in window areas, feature lights

on top of the wardrobes and bedside are 230v AC.

The ensuite bathroom has a large glass fronted shower area with rain shower, “his and hers” sinks and a combined bidet toilet. Sink unit top, floor and walls in marble chosen to complement the subtle colour choices of the owner. Lighting is concealed 24v DC LED type with dedicated wall mirror lighting.

The whole area is fully air-conditioned with 72,000 BTU of heating or cooling available, fan coils are located around the room with controls at the bedside; central unit can be switched separately to outer units to prevent direct air over the bed whilst sleeping.

Permanently running fresh air supply and extraction from the shower area ensures a fresh feel to the room at all times without the need to open windows.

MASTER ACCOMMODATION

Located forward on the main deck level this full beam accommodation comprises of a large sleeping area with King sized bed against the forward bulkhead facing aft. The bed is flanked by a choice of walk-in dressing area and ensuite bathroom or “his and hers” ensuite bathrooms.

To the port side there is a desk and make-up area with chair facing the full length windows, aft of this is an ample wardrobe space against the aft bulkhead. A 55” TV is fitted above a low level unit with safety box and mini bar located centrally on the aft bulkhead viewable for the comfort of the bed. Sound is provided by a Marantz sound system with Bowers & Wilkins speakers giving a room filling experience. Apple TV and satellite equipment is also connected.

To the starboard side there is a second wardrobe aft and a seating area against the full length window.

The side windows have two opening sections one per side to allow perfect ventilation when air-conditioning is not desired, all windows have black-out blinds in addition to acetic blinds with concealed lighting producing a relaxing ambient feeling.

Overhead lighting is concealed 24v DC LED type around the edges of the room with a recessed lighting feature above the bed. Accent lighting below the bed and in window areas, feature lights on the bedside tables are 230v AC.

The ensuite bathroom has a large glass fronted shower area with rain shower, single bathroom option has “his and hers” sinks and a combined bidet toilet. Twin bathroom option has independent bidet toilets and sinks with a central combined glass walled shower. Sink unit top, floor and walls in marble chosen to complement the subtle colour choices of the owner. Lighting is concealed 24v DC LED type with dedicate wall mirror lighting.

The whole area is fully air-conditioned with 36,000 BTU of heating or cooling available, fan coils are located at either side of the room with controls at the bedside.

Permently running fresh air supply and extraction from the shower area ensures a fresh feel to

the room at all times without the need to open windows.

GUEST VIP ACCOMMODATION

Located aft on the lower deck level there are two VIP accommodations, one port and one starboard side which mirror each other.

The airy accommodation has a queen sized bed facing forward located against the aft bulkhead forward of the ensuite area. There are bedside tables on either side, inboard of the bed is the entrance to the ensuite bathroom.

Outboard of the bed are twin port lights, openable and with storm shutters, black-out blinds in addition to acetic blinds with concealed lighting producing a relaxing ambient feeling.

On the forward bulkhead is a make-up table or desk with chair and shelving unit to outboard side. A 42" TV is mounted above on the wall with BOSE Solo 5 soundbar for TV and music sound. Inputs for decoder or other entertainment sources are supplied.

Overhead lighting is concealed 24v DC LED type around the edges of the room with accent lighting below the bed and in window areas, feature lights on the bedside tables are 230v AC.

The ensuite bathroom has a glass fronted shower area with adjustable shower head, sink and a combined bidet toilet. Sink unit top, floor and walls in marble chosen to complement the subtle colour choices of the owner. Lighting is concealed 24v DC LED type.

The whole area is fully air-conditioned with 18,000 BTU of heating or cooling available, fan coils are located below the bed with air outlet on outboard hull side of the room with control at the bedside.

Permently running fresh air supply and extraction form the shower area ensures a fresh feel to the room at all times without the need to open windows.

GUEST TWIN ACCOMMODATION

Located forward on the lower deck level there are two Twin accommodations, one port and one starboard side which mirror each other.

The accommodation has a twin single beds facing aft located against the outboard and inboard sides and forward bulkhead. There is a shared bedside tables between the beds, the entrance to the ensuite bathroom is central on the aft bulkhead.

Outboard of the beds are twin port lights, openable and with storm shutters, black-out blinds in addition to acetic blinds with concealed lighting producing a relaxing ambient feeling. A 42" TV is mounted on the aft bulkhead inboard of the bathroom door with a BOSE Solo 5 soundbar for TV and music sound. Inputs for decoder or other entertainment sources are supplied. Outboard of the bathroom door and aft of the bed is a wardrobe with internal shelving and hanging space.

Overhead lighting is concealed 24v DC LED type around the edges of the room with accent

lighting below the bed and in window areas; feature light on the bedside table is 230v AC.

The ensuite bathroom has a glass fronted shower area with adjustable shower head, sink and a combined bidet toilet. Sink unit top, floor and walls in marble chosen to complement the subtle colour choices of the owner. Lighting is concealed 24v DC LED type.

The whole area is fully air-conditioned with 12,000 BTU of heating or cooling available, fan coils are located below the bed with air outlet on outboard hull side of the room with control at the bedside.

Permanently running fresh air supply and extraction from the shower area ensures a fresh feel to the room at all times without the need to open windows.

LOWER DECK LOBBY

Further in is the dining area with its large limed oak wooden dining table with chairs set athwart ship and centrally located providing relaxed seating for 8 persons to dine. Overhead is a feature wood design with hanging 230v AC lighting.

The forward bulkhead has illuminated marble panels and central shelving unit, additional storage units are located to port and starboard side aligned with the table.

There are two further doors from here to either side deck and doors to the main lobby and galley.

Overhead lighting is 24v DC LED type with accent lighting in window areas, feature lights around the area and above the dining table are 230v AC.

The whole area is fully air-conditioned with 84,000 BTU of heating or cooling available, fan coils are located in the ceiling and ducted to outlets on both sides of the area and above the table through the wood feature design in the ceiling.

The saloon contains the main entertainments system for the yacht, A Marantz amplifier supplies music to the beach club, cockpit, foredeck and Flybridge in addition to the saloon area, internal speakers are Bowers & Wilkins and external German Maestro Marine type. Sonos, Apple TV, satellite decoder, bluray player and additional inputs are supplied.

GALLEY

There are two entrances to the galley one from the saloon and one from the port side deck area plus the crew access is via the galley.

The galley is laid out in an “L” shape with a main food preparation area and storage to the side. The storage area has three full height Siemens fridges and one full height wine cooler provided. Opposite these equipments there is a narrow worktop area with storage below.

The main area has ample work top provided with dishwasher and storage provided below. Cooking is from a large Siemens 5 ring hob with combination oven/microwave unit below; there is an extraction hood overhead. A twin bowl sink is located in the worktop on the starboard aft

side.

There are storage units below the worktop and wall mounted above the inboard work area. A dumb waiter serves to the owner's cabin and Flybridge, next to this is a full size coffee machine.

On the port side there is a large window providing natural light into the galley, aft of this under the access steps to the forepeak is a storage cupboard where the electrical panels are housed. Forward of this is the access door to the crew quarters.

The lower deck lobby provides access to the guest accommodation areas, the stairs descend from the main deck lobby into this area. Access to the central bilge tunnel is also located in this area also.

On the port side there is a mini bar area with fridge and storage for the use of the guests. Also located here is the lower accommodation electrical supply board. To the starboard side is more storage for towels and bedding of the guest areas.

MAIN DECK LOBBY

The main deck lobby provides access to from the saloon to the lower deck, upper deck, master cabin, day head and gym area. It has a glass feature staircase to the upper lobby and owner's cabin. Here there is space for a sculpture if the owner wishes.

The lobby, upper lobby and lower lobby are air-conditioned with 12,000 BTU fan coil situated at the highest point so cool air falls through the 3 levels.

The glass wall separating the gym from the lobby has metal design details and wall lighting. The day head here has combined bidet toilet and sink unit with designer sink.

GYM

The air-conditioned gym provides space for two basic machines of owners choice, a wall mounted TV for entertainment and 18,000 BTU of air-conditioning.

There is an access door to the starboard side deck via a weatherproof door. The full glass hull side provides views over the sea whilst training.

Blinds to the internal glass wall provide privacy also during training sessions and allow natural light into the lobby when not in use.

SALOON AND DINING AREA

The main entrance to the saloon area is via the large sliding glass door on the cockpit, walking into the saloon on the port side there is a large "U" shaped seating arrangement with coffee table. To starboard is the 65" TV mounted at an angle to allow viewing from all areas of the saloon. A large lounging chair free standing is also found here.

To both port and starboard side are large windows filling the saloon with natural light, two section

of these one per side are openable to provide fresh air flow across the saloon. Ascetic blinds are fitted for privacy in the evenings with hidden accent 24v DC LED lighting.

WHEELHOUSE

The wheelhouse is accessed by an internal door from the upper lobby or from the two side doors opening on to the foredeck area. The area is fully glazed providing excellent visibility all around the foredeck and to sea.

To the port side of the helm there is a small drinks preparation area and a day head for the crew use. Access door to the port side walkway.

To the starboard side of the helm there is a chart table, access door to the starboard side walkway and against the aft bulkhead are the main helm power distribution panels.

Centrally against the aft bulkhead there is a raised seating area for the crew to relax and still be able to monitor the progress of the yacht safely.

The helm will be laid out with the equipment detailed in the navigation section in an ergonomic way. There are two helm seats provided.

BEACH CLUB

The beach club area is behind the transom door, main access is when the transom door is opened forming a beach area for bathing and the club area for relaxing inside the structure. There is an emergency escape to main deck also and access via the engine room.

The lounging area in teak and white is to the port side of the club with matching coffee table and to starboard a bar area with fridge and icemaker, a swimming shower is provided on the starboard side of the beach and a full shower is provided in the back of the club area. There is also a changing room and separate toilet.

This area is fully air-conditioned with 36,000 BTU of heating or cooling arranged overhead creating an air curtain in the doorway. There are German Maestro Marine speakers here for music from the main saloon unit.

Access to the starboard side laundry with separate washer and dryer plus storage and port side technical space for AC main power controls and systems is also from this area via water tight doors.

CREW

General

The crew area access is from the galley down the internal stairs, it is arranged with a captain's cabin with ensuite and two twin crew cabins also with ensuite. There is a mess/lobby area and laundry area also.

Mess/Lobby/Laundry

Entering the area from the stairs to the aft you have the laundry area, there is storage here for linen and towels plus a washer and drier installed, space for ironing. Overhead there are electrical distribution boxes in a locker. Also on the mess aft bulkhead facing the mess area there is a PLC screen for access to the boats systems and a Raymarine monitor for CCTV and navigation monitoring by the crew when underway.

Forward to port is the mess area, this has storage and a worktop area with small fridge and combo microwave oven for food prep. Seating and table are provided here for the crew. To the starboard side are 2x full height Siemens freezers plus a wall mounted TV.

The area has 24,000 BTU of heating or cooling located under the entry stairs and distributed around the space with independent control, also there is an opening port light with dead light for fresh air if required. The area is also supplied from the main internal fresh air make-up system.

Access to captains and crew cabins is from this space.

Captain's Cabin

Access from the crew lobby opens into a large cabin with a double bed against the hull side next to a large wardrobe with fitted safety box for boat documents.. On the aft bulkhead there is a working desk with desk light. Entry into the ensuite bathroom is forward of the wardrobe.

The area is fully air-conditioned with 9,000 BTU of heating or cooling available, the fan coil is located behind the wardrobe with air outlet on outboard hull side of the room with control at the bedside. An openable port light with dead light is also available for fresh air. The area is also supplied from the main internal fresh air make-up system.

A 22" TV is mounted on the aft face of the wardrobe, Inputs for decoder or other entertainment sources are supplied.

Overhead lighting is exposed 24v DC LED type fitted into the ceiling panels.

The ensuite bathroom has a glass fronted shower area with adjustable shower head, sink and a combined bidet toilet.

Crew Cabins

Access from the crew lobby opens into a these compact cabins with bunk beds against the hull side. Forward there is a wardrobe before entering into the ensuite bathroom.

The area is fully air-conditioned with 9,000 BTU of heating or cooling available, the fan coil is located behind the wardrobe with air outlet on outboard hull side of the room with control at the bedside. An openable port light with dead light is also available for fresh air. The area is also supplied from the main internal fresh air make-up system.

Overhead lighting is exposed 24v DC LED type fitted into the ceiling panels.

The compact ensuite bathroom has a glass fronted shower area with adjustable shower head, sink and a combined bidet toilet.

Access to the forward bilge and chain wash pump is from the port crew cabin behind the steps to the bathroom and access to the bow thruster area is from the starboard crew cabin through a hatch in the floor

Exterior Deck Arrangement

COCKPIT

The cockpit is accessed from the passerelle on port side or from the two staircases to port and starboard. Optional side boarding gates in the walkways can be added if required.

The cockpit has a main seating area with table for dining; loose chairs can be added to provide comfortable seating for 8 persons, behind the seating is a sun lounging area. There is a bar with fridge, icemaker and small sink on the forward port side to serve you whilst you relax.

Overhead are 4 German Maestro Marine speakers connected to the saloon entertainments system and 2 independent banks of 24v DC LED lights. Low level lighting is provided on steps and around the superstructure, also from below the cockpit table.

From the cockpit you can access the saloon via the large sliding glass doors, the upper deck from the aft stairs and along the port side to the forward stairs you can reach the foredeck and wheelhouse. There is also access to both saloon and galley on the port side and saloon and gym on the starboard side.

UPPER DECK

The upper deck is the owner's level, it is a large storage deck for tenders and toys but when cleared it becomes a fantastic relaxing area or games area giving a full 50m² of space.

There is a 2,500Kg crane for loading toys with flood lighting and low level accent lights, music from the owner's cabin system and space. Life rafts are also located at this level.

The area has 2 German Maestro Marine speakers connected to the Owners cabin entertainments system.

A 3m extending electric bimini provides shade for the breakfast area on the owner's deck when required.

Access to the foredeck and Flybridge.

FOREDECK

Apart from the deck gear detailed in its section the foredeck is another lounging space, forward

facing seating with folding table looks across the twin sun beds and out to sea. There is also a seating area in the bow to enjoy an uncluttered view of the sea or to look back over the forward area.

The area has 2 German Maestro Marine speakers for music from the saloon music system and low level accent lighting, flood lighting is also provided when working with deck gear.

FLYBRIDGE

The Flybridge is only accessible from the upper deck steps; there is a large central table for 12 people to eat comfortably, 12 outside dining chairs are supplied for the yacht. and a lounging area aft with Bimini/sunshade overhead.

The wet bar on the starboard side has BBQ, fridge, icemaker and sink making it ideal for preparing snacks whilst entertaining. To the port side storage cupboards and the dumb waiter deliver food direct from the galley.

The roll bar overhead provides shade for dinning and subtle lighting at night, above all the navigation requirements are mounted to take you to any destination you can imagine on the seas.

Forward on the Flybridge is the upper helm and two side seats for the perfect view during navigation.

Music is provided from the saloon music system via 4 German Maestro Marine speakers mounted at low level around the deck.

There is a canvas bimini system from the aft of the rollbar to the aft of the fly deck divided into 3 sections to provide shade while relaxing.

Main Features & Options

Full specification including:

MAN 800hp Engines

Electric Fin Stabilization

Generators: 2 x 65kW, 1x 27kW

Details to be defined but will include:

Full air conditioning / heating with central chiller system and fresh-air make up with individual controlled fan coil for each cabin.

2 x Desalinators

Electro-hydraulic Bow and Stern Thruster

Hydraulic twin anchor windlass and twin stern capstan winches driven by the main electro-hydraulic system 24v DC/380 + 220v AC electrical system

Hot and cold swimming shower at stern

Flybridge wetbar with sink, hot and cold water, electric barbeque, icemaker and refrigerator

Flatscreen televisions in all guest cabins, captain's cabin and crew mess, all with SAT connection

TV (Saloon 75") Owner's Cabin 65" and Masters Cabin 65"

Satellite TV system (60cm Dish)

Raymarine electronic depth and speed displays, autopilot, VHF with AIS, radar and plotter

SSB radio

Navtex NX300

Twin pump hot and cold water pressurized system with shore connection

Toilet system with holding tank

Automatic fire extinguishing system for engine room

Automatic bilge pumps

380v AC shore power (automatic reclaim) and battery chargers

Remote controlled search light

Teak laid bathing platform and steps, side decks and foredeck, flybridge stairway, flybridge and cockpit floor

Flybridge sunbed and cushions

2500 Kg Capacity Tender Crane

Fully fitted crew cabin

Antifouling

6X Under water transom lights

Fuel polishing system

Telephone system to all cabins, crews quarters and pilothouse

Twin 10 man life rafts

6 CCTV cameras with monitor in the wheelhouse and crew mess

Technical Details

Length overall	32.50 m
Beam	8.00 m
Draft incl. props	2.10 m
Fresh water tank	3,000 liters
Black water tank	2,000 liters
Fuel tank	29,000 liters
Engines	MAN 800hp
Displacement	half-load/240 t full-load/255 t
Max speed	14 knots
Cruise speed	12 knots
Range	4000 nm
International Gross Tonnage	Under 300 GT

History

"I was still relatively young but remember taking a speed boat out when the weather and waters were very rough and we pounded through the waves only to see how fast and how far we could fly."

Ömer Malaz *Founder and CEO*

Numarine's constantly expanding 35,000 square meter climate-controlled and environmentally friendly production facility has the capacity to build fifty 62' - 105' motor yachts per year.

Within the expansive facility, dedicated departments manufacture our exhaustive list of componentry in-house using the very latest in cutting edge technology and automation.

Our moulds for all hull, body and deck pieces are machined using one of Europe's largest 5 Axis CNC machines. Capable of running 24 hours a day, our precision moulds are produced to a tolerance of 0.1mm meaning each and every model is geometrically perfect from the outset.

In addition to our hull and body production, Numarine has dedicated glass, cabinetry, upholstery and metal workshops in house producing each and every component found in our yachts. This in house production ensures the highly consistent quality, perfect fitment and optimum flexibility for customisation on all our models.

Keeping our capacity to 50 motor yachts per year means each and every one is treated with the utmost care, allowing for custom requirements to be undertaken with ease. Numarine has been awarded ISO 9001:2000 certification by RW TUV further ensuring the consistent high quality of all Numarine yachts.

A combination of boundless energy and a relentless search for perfection consistently creates cutting edge and truly individual Numarine models.

Continually impressing the motor-yachting world with ground-breaking and innovative designs, Numarine are the number one choice for discerning owners who value individualism with a want to stand out from the crowd.

Numarine fully embraces the fact that every owners needs are different. Be it a striking and unique exterior colour scheme or full blown re-configuration of an interior layout, our in house design team work with our owners to create the perfect configuration and décor suited exactly to their needs with absolutely no compromise ever needed.

We take the time, every time, to get it right for you.

Исключения

При продаже яхты исключаются личные вещи владельца.

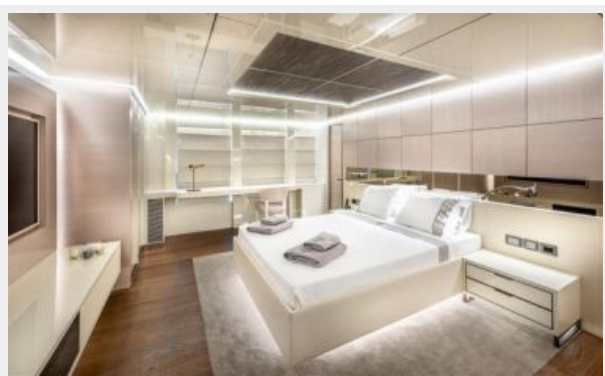
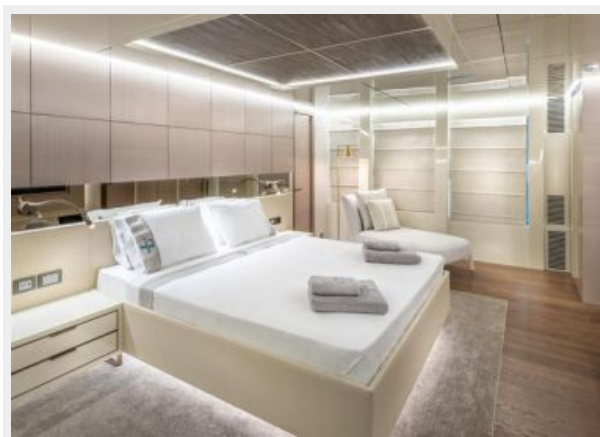
Отказ от ответственности

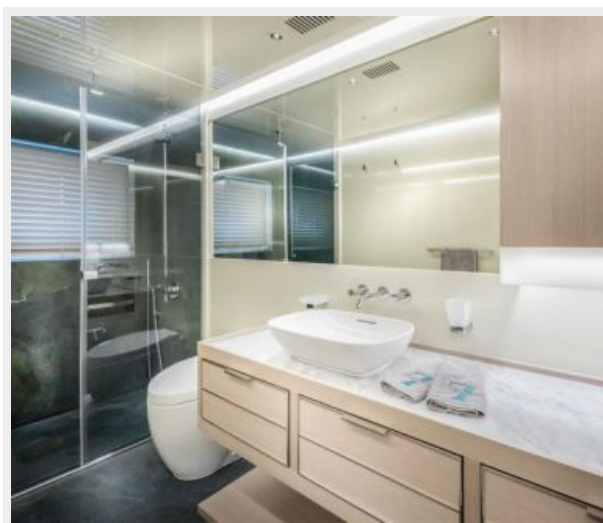
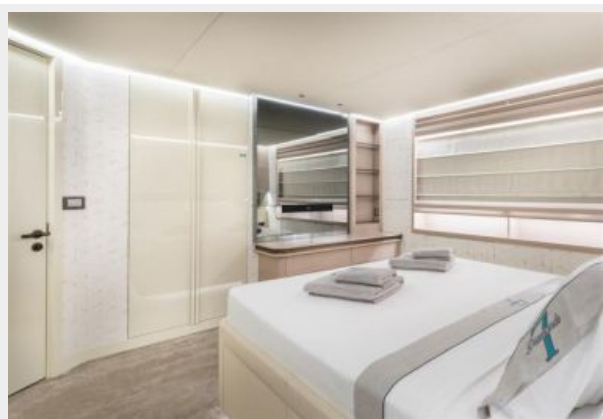
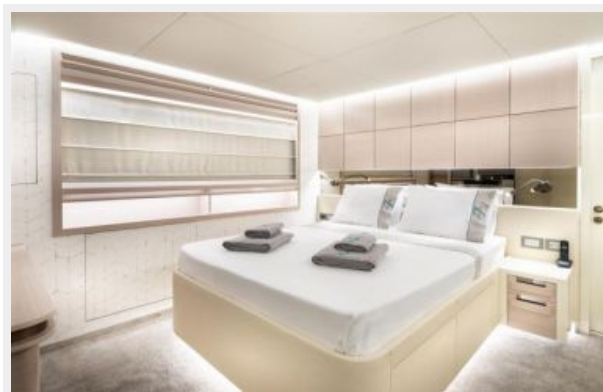
Компания предоставляет описание судна или яхты добросовестно, но не может гарантировать точность этой информации, а также не ручается за техническое состояние. Покупатель должен проинструктировать своих агентов или оценщиков исследовать представленную информацию более подробно, по собственному желанию. Продажа судна или яхты, изменение цены или снятие с продажи будет происходить без предварительного уведомления.

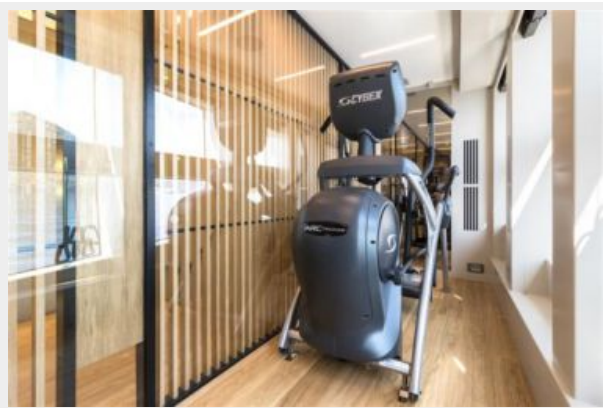
ФОТОГРАФИИ

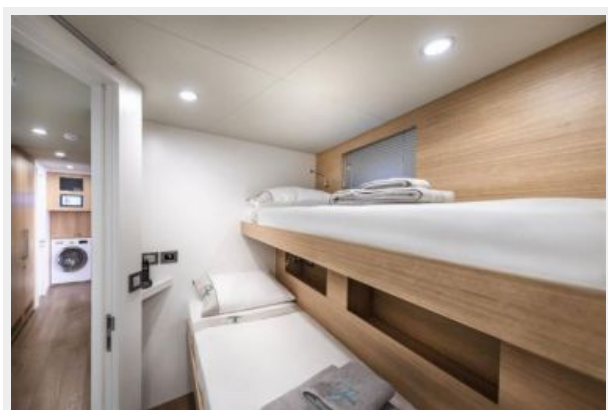














КОНТАКТЫ

Андрей Шестаков (Andrey Shestakov) – ведущий яхтенный брокер отдела продаж яхт и судов компании Shestakov Yacht Sales Inc. Официальный представитель Shestakov Yacht Sales Inc. для русскоговорящих клиентов в центральном офисе компании в Майами/Форт Лодердейл/Флорида/США.

Контактная информация

Email: andrey@shestakovyachtsales.com

Web: shestakovyachtsales.com

Телефоны

Краснодарский край: **+7(918)465-66-44**

США, Майами, Флорида: **+1(954)274-4435**

Время работы

Понедельник – Суббота: **9:00 - 21:00**
EDT

Воскресенье: **Закрито**

Адрес



Harbour Towne Marina, 850 NE 3rd St,
STE 213, Dania, FL 33004