

SNITCH — LAGOON



Builder: LAGOON

Year Built: 2017

Model: Cruising Sailboat

Price: PRICE ON APPLICATION

Location: Dominican Republic

LOA: 42' 0" (12.80m)

Beam: 25' 3" (7.70m)

Max Draft: 4' 1" (1.24m)

Our experienced yacht broker, Andrey Shestakov, will help you choose and buy a yacht that best suits your needs **SNITCH — LAGOON** from our catalogue. Presently, at Shestakov Yacht Sales Inc., we have a wide variety of yachts available on our sale's list. We also work in close contact with all the big yacht manufacturers from all over the world.

If you would like to buy a yacht **SNITCH — LAGOON** or would like help answering any questions concerning purchasing, selling or chartering a yacht, please call **+1(954)274-4435**

TABLE OF CONTENTS

TABLE OF CONTENTS	2
SPECIFICATIONS	3
Overview	3
Basic Information	3
Dimensions	4
Speed, Capacities and Weight	4
Accommodations	4
Hull and Deck Information	4
Engine Information	4
PHOTOS	5
CONTACTS	12
Contact details	12
Telephones	12
Office hours	12
Address	12

SPECIFICATIONS

Overview

A sleek, modern design.

This new member of the Lagoon family has style and a strong personality. While keeping a family resemblance and retaining the main features of the latest generation of Lagoons, it shows us a new path: unhurried evolution, a new "organic" approach, in search of harmony between living space and man. An elegant silhouette, flowing curves which, by virtue of a noticeable acceleration of the lines in the bows and in the new coachroof design, emphasise the powerful and dynamic nature of this new model? A VPLP design naturally, a guarantee of performance under sail!

On deck: An ingenious deck layout: The mast moved further aft and the self-tacking jib, a guarantee of performance under sail and ease of handling, provide the ability to bring all operations together in one place.

An ergonomic helming station at the coachroof bulkhead, offering many advantages: direct communication between the cockpit and saloon, improved circulation, forward and aft of the helming station, direct access to the coachroof for easier access to the boom, a composite bimini with a sliding panel to ensure a good view of the sails, a closure panel for helming station safety when under way.

A cosy cockpit, with smooth, elegant curves: a single level from the aft platform to the saloon: a structural "revolution", entirely new ergonomics that ensure excellent use of space and ease of circulation on board, a large glazed door that occupies the entire width of the coachroof, and provides access to the unparalleled internal volumes. The suspended steps at the transom provide a whole new perception of the boat: a continuous, wide and inviting platform, worthy of a large vessel.

Basic Information

Category: Cruising Sailboat

Sub Category: Cruising Sailboat

Model Year: 2017

Year Built: 2017

Country: Dominican Republic

Dimensions

LOA: 42' 0" (12.80m)

LWL: 41' 0" (12.50m)

Beam: 25' 3" (7.70m)

Max Draft: 4' 1" (1.24m)

Speed, Capacities and Weight

Displacement: 26460 Pounds

Water Capacity: 79 Gallons

Fuel Capacity: 79 Gallons

Accommodations

Total Cabins: 3

Total Heads: 3

Hull and Deck Information

Hull Material: Fiberglass

Engine Information

Engines: 1

Manufacturer: Yanmar

Model: 4JH57

Engine Type: Inboard

Fuel Type: Diesel

PHOTOS



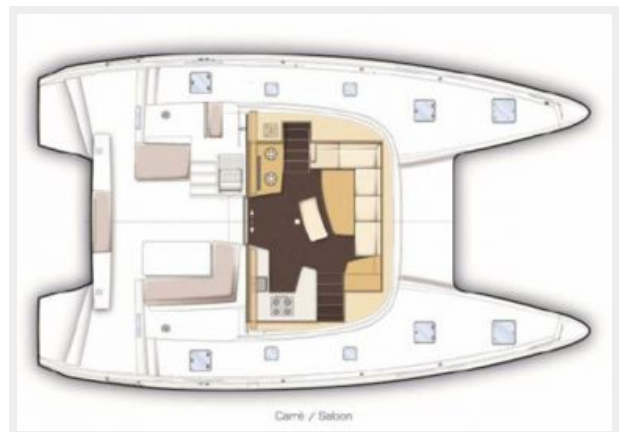
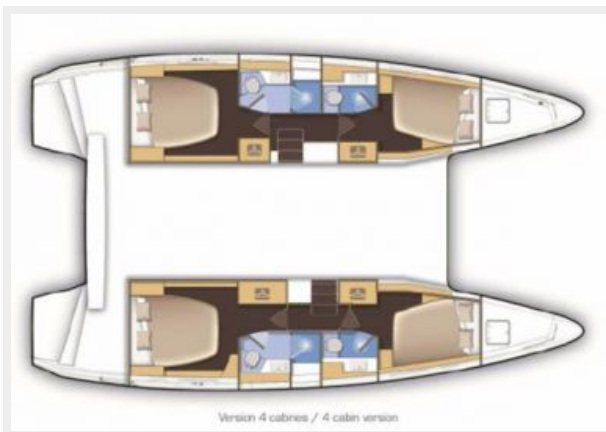
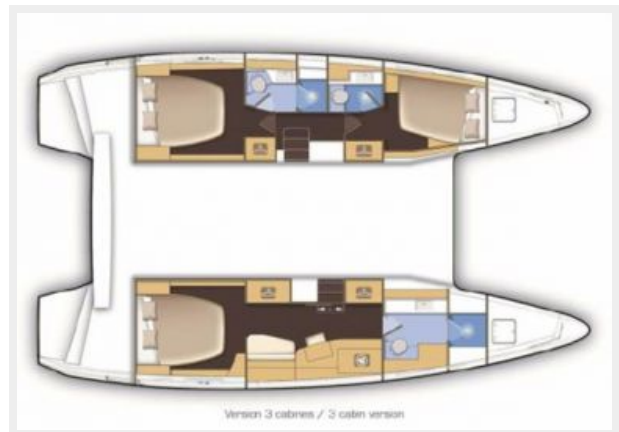
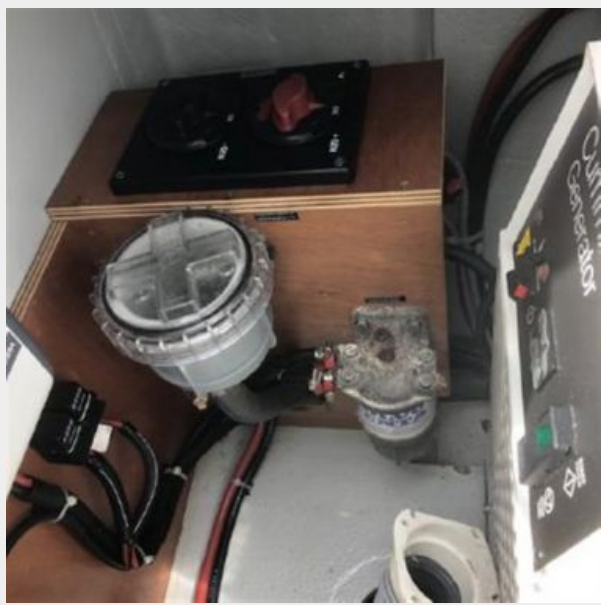












CONTACTS

Andrey Shestakov, leading yacht broker of the sales department of Shestakov Yacht Sales Inc. Shestakov Yacht Sales Inc., the official representative of the Miami/Fort Lauderdale FL headquarters.

Contact details

Email: andrey@shestakovyachtsales.com

Web: shestakovyachtsales.com/en/

Telephones

USA: +1(954)274-4435

Office hours

Monday – Saturday: **9:00 - 21:00** EDT

Sunday: **closed**

Address



Harbour Towne Marina, 850 NE 3rd St,
STE 213, Dania, FL 33004