

ODYSSEY — PRINCESS YACHTS



Builder: PRINCESS YACHTS

Year Built: 2015

Model: Mega Yacht

Price: PRICE ON APPLICATION

Location: France

LOA: 131' 9" (40.16m)

Beam: 26' 4" (8.03m)

Min Draft: 8' 9" (2.67m)

Max Draft: 8' 9" (2.67m)

Cruise Speed: 10 Kts. (12 MPH)

Max Speed: 23 Kts. (26 MPH)

Our experienced yacht broker, Andrey Shestakov, will help you choose and buy a yacht that best suits your needs **Odyssey — PRINCESS YACHTS** from our catalogue. Presently, at Shestakov Yacht Sales Inc., we have a wide variety of yachts available on our sale's list. We also work in close contact with all the big yacht manufacturers from all over the world.

If you would like to buy a yacht **Odyssey — PRINCESS YACHTS** or would like help answering any questions concerning purchasing, selling or chartering a yacht, please call **+1(954)274-4435**

TABLE OF CONTENTS

TABLE OF CONTENTS	2
SPECIFICATIONS	4
Basic Information	4
Dimensions	4
Speed, Capacities and Weight	4
Accommodations	4
Hull and Deck Information	5
Engine Information	5
DETAILED INFORMATION	6
INTRODUCTION TO ODYSSEY	6
MAIN DECK SALON	6
MAIN DECK DINING AREA	6
GALLEY	7
MAIN DECK AFT GUEST LOBBY	7
MAIN DECK AND MID GUEST LOBBY	7
MAIN DECK PANTRY	8
MAIN DECK DAY HEAD	8
MAIN DECK / SIDE DECKS / TRANSOM	8
BEACH CLUB / VIP GARAGE	8
FOREDECK	9
AFT UPPER DECK	9
SUNDECK	9
WHEELHOUSE	10
UPPER DECK PANTRY	10
UPPER LOBBY	10
UPPER DAY HEAD	11
SKY LOUNGE	11
LOWER DECK LOBBY	11

MAIN DECK MASTER STATEROOM AND EN-SUITE	11
AFT VIP STATEROOM AND EN- SUITE	12
FORWARD VIP STATEROOM AND EN_SUITE	13
PORT GUEST CABIN AND EN-SUITE	14
STARBOARD GUEST CABIN AND EN-SUITE	14
INTERIOR DETAILS	15
ENGINES, GEAR BOX AND GENERATORS	17
NAVIGATION AND COMMUNICATION EQUIPMENT	17
HYDRAULIC SYSTEMS AND THRUSTERS	19
PASSERELLE	19
UPPER DECK CAPTAINS CABIN	20
CREW ACCOMMODATION	20
CREW OFFICE	23
FIREFIGHTING AND SAFETY EQUIPMENT	24
RECENT SERVICE	25
Exclusions	25
Disclaimer	26
PHOTOS	27
CONTACTS	42
Contact details	42
Telephones	42
Office hours	42
Address	42

SPECIFICATIONS

Basic Information

Category: Mega Yacht

Model Year: 2015

Year Built: 2015

Country: France

Coast Guard #: The Creek

Vessel Top: Hardtop

Dimensions

LOA: 131' 9" (40.16m)

Beam: 26' 4" (8.03m)

Min Draft: 8' 9" (2.67m)

Max Draft: 8' 9" (2.67m)

Speed, Capacities and Weight

Cruise Speed: 10 Kts. (12 MPH)

Cruise Speed Range: 2300

Max Speed: 23 Kts. (26 MPH)

Displacement: 518086.3157 Pounds

Gross Tonnage: 395 Pounds

Water Capacity: 1321 Gallons

Holding Tank: 898 Gallons

Fuel Capacity: 7751 Gallons

Accommodations

Total Cabins: 5

Sleeps: 12

Total Heads: 6

Captain Cabin: True

Crew Cabin: 4

Crew Berths: 7

Crew Sleeps: 7

Crew Heads: 4

Hull and Deck Information

Hull Material: GRP

Deck Material: Teak

Hull Configuration: Semi-Displacement

Hull Color: Flag Blue

Hull Designer: Princess Yachts International **Exterior Designer:** Bernard Olesinski

Interior Designer: Princess Design Team

Engine Information

Engines: 2

Manufacturer: MTU

Model: 12V 4000 M93L

Engine Type: Inboard

Fuel Type: Diesel

DETAILED INFORMATION

INTRODUCTION TO ODYSSEY

Superyacht "Odyssey" was built in 2015 by Princess and is Hull number 5 of the ever popular M-class Series. She is a 40m/131ft yacht with accommodations for up to 12 guests in 5 cabins featuring a full beam master suite, 2 VIP staterooms, 2 double cabins and 2 twin cabins plus 7 crew. She features a variety of amenities including AI-fresco dining for 10 on the upper deck, an onboard 6-person Deck Jacuzzi, a spacious beach club, outdoor balconies in the main salon, shower room in the garage, Wi-Fi and Zero-Speed Stabilizers. She is powered by 2 MTU 12V 4000 M93L's with 3,509hp diesel engines. The luxury styling of this yacht is a work of Art. This successful series of the M - Class offers a great Volume at over 395 GT and very popular design and layout making here a successful family and or Charter Platform . With her proven systems and reliable systems she is sure to be the best in class 40 meter on the market today! The name "Odyssey" is Excluded and Protected.

MAIN DECK SALON

Entrance from Aft Guest Lobby, Outboard Sliding doors and Dining Area Outboard manually operated centre opening stainless-steel trimmed sliding doors with tinted toughened glass fitted to port and starboard sides with fabric curtain (with black-out lining) on wave system Sofa at forward and aft ends of Saloon Two occasional chairs to port Two stools to starboard Large circular coffee table with feature grain finish and storage below 55" LED TV on rise and fall mechanism Surround sound system with CD/DVD/Radio comprising five flushmount speakers and subwoofer Harmon Kardon Bluetooth device Telephone with intercom facility Overhead LED and concealed lighting with dimming. 230v outlets Air conditioning outlets Timber flooring running athwartships outboard and running longitudinally centrally with inset carpet for seating area **Audio Visual:**

1 x 55" Samsung HD LED TV (with 3D capability) (on rise and fall mechanism) 1 x Harmon Kardon 5.1 BDS 570 3D Bluray (c/w sub) 1 X Harmon Kardon subwoofer (c/w cable) 5 x Speaker single KEF CI160QR (235MM DIA 98mm depth) (centre speaker KEF CI160QR mounted in headlining) 1 X Harmon Kardon Bluetooth module

MAIN DECK DINING AREA

Entrance from Saloon, Mid Guest, Lobby and Main Deck Pantry Ten place dining table with feature timber finish Ten dining chairs Sideboard unit to port with stainless steel and chevron grain door detail and leather top with storage for up to twelve place settings of evening crockery and cutlery Table lamp on port sideboard Forward bulkhead with timber floating shelf Two table lamps on floating shelf Automatic sliding door to Mid Guest Lobby Automatic sliding door to Main Deck Pantry Overhead LED and concealed lighting with dimming. Large panoramic toughened

glass windows on port and starboard sides with black out blinds and roman blinds 230v outlets
Air conditioning outlets Timber flooring running athwartships outboard and running longitudinally centrally

GALLEY

Entrance from Main Deck Pantry White lacquered door fronts with durable laminate interiors, non slip shelf bases Granite work surfaces with under counter storage cupboards around perimeter working areas with black glass splashbacks Stainless-steel hot cooking area Eye level storage cupboards above perimeter working areas Central island unit with half bowl sink with mixer tap Chefs pass with powered up/down screen to main pantry operated from galley. Unit houses a single level duel strip infrared warming lamp above work surface Induction hob in hot cooking zone Stainless-steel industrial extractor fan with filters and fire damper Miele 900mm 85ltr conventional oven in hot cooking zone Miele combination oven in hot cooking zone Miele microwave to side of chefs pass Sub Zero fridge drawer under central island Sub Zero fridge/freezer drawer under central island Two Miele stainless-steel full height fridge/freezer 327/115ltrs each Miele professional dishwasher One and a half bowl sink on port side Large undercounter bins Telephone with intercom facility LED overhead and task lighting with dimming Fire extinguisher and fire blanket Large panoramic tinted toughened glass windows to starboard with venetian blinds 230v outlets above perimeter work surfaces and outboard face of central island Air conditioning outlets Non slip safety flooring

MAIN DECK AFT GUEST LOBBY

Entrance from Main Deck Aft Cockpit and Saloon seating area Aft manually operated, central opening curved stainless-steel trimmed sliding door with tinted toughened glass with fabric curtain (with black-out lining) on wave system Curved timber bulkheads outboard feature panel Feature console table Table lamp on console table Translucent glass and metallic privacy screen to divide Aft Lobby from Saloon supported between two pillars Overhead LED and concealed lighting with dimming 230v outlets Stone entrance flooring Audio Visual: 2x Speakers Sonance extreme VP65R-XT 6.5" pair (4 x Speakers = 2 x Pair) (Mounted in headlining) 1 x Subwoofer SpeakerCraft BAS (Mounted low level) 1 x Amplifier Lexicon DD8 8 Channel 1 x Sonos Connect

MAIN DECK AND MID GUEST LOBBY

Entrance from Main Deck Dining, Main Deck Day Head, Master Stateroom, starboard sidedeck and Main Pantry Pantograph door to starboard side deck Feature guest staircase to lower and upper deck with concealed lighting Feature lit recess Storage cupboard with hanging rail and shelf Overhead LED and concealed lighting with dimming Large tinted toughened glass window to starboard with blackout blind and roman blind 230v outlets Air conditioning outlet Timber flooring

MAIN DECK PANTRY

Entrance from Dining Area, port sidedeck, crew staircases and Mid Guest Lobby Pantograph access door to port side deck Inboard and outboard low level unit with stone worktop and timber door fronts Miele dishwasher Miele undercounter fridge Ice maker Miele full height, three zone, wine cooler Miele Nespresso coffee machine in coffee making area Sink with mixer tap Storage for up to twelve place settings of day crockery and cutlery Telephone with intercom facility Dumb waiter system serving Upper Pantry and Sundeck Overhead LED lighting with dimming Fire extinguisher Large panoramic tinted toughened glass windows to port with venetian blinds 230v outlets Air conditioning outlets Timber effect non-slip flooring

MAIN DECK DAY HEAD

Entrance from mid guest lobby Freshwater 'Quiet Flush' macerator toilet Semi-recessed washbasin with wall mounted taps and mirror above Storage below basin comprising of open shelf and cupboard below Day Head accessories Large tinted toughened glass window to starboard with venetian blind Overhead LED and concealed lighting Air conditioning outlet Extractor fan Stone top and floor, mosaic tiled splash back

MAIN DECK / SIDE DECKS / TRANSOM

Teak-laid, self draining cockpit Built-in upholstered aft seating, with storage lockers Aft, manual sliding doors to the Saloon Bar unit with stone effect work surface incorporating sink, fridge and general storage Stowage locker beside bar unit for stowage of shoes or coats Port and starboard stainless-steel bollards and aft capstans mounted on deck level stainless-steel rope handling plates, with built in drains Stainless-steel fairleads Freeing ports LED overhead lights with dimming, low level and accent lighting Four Speakercraft speakers and one BAS passive bass sub-woofer linked to the Saloon AV system Teak stair treads leading to Upper Deck Teak-laid side decks running forward to side deck stairs leading to wheelhouse, wing stations and foredeck Access door to Engine Room and Beach Club / VIP Garage on port side deck Mid starboard sidedeck access door to Entrance Lobby Mid port sidedeck access door to Main Deck Pantry Port and starboard side sliding doors leading to Saloon Folding balcony integrated into port and starboard side bulwarks, with manually operated removable handrails for safe use Black water tank pump out in starboard side forward locker Grey water tank pump out in port side forward locker Port and starboard side bulwark access doors Passerelle Controls for passerelle, bathing ladder, Beach Club / VIP Garage door and aft capstans Port and starboard stainless-steel and glass gates leading down to transom Access to fuel bunker, water tank fill, deck wash, transom shower and shore support locker

BEACH CLUB / VIP GARAGE

Large transom beach door leading to garage, Engine Control Room, Workshop Stern door

becomes large teak-laid bathing platform when in the open position Beach Club / VIP Garage interior deck teak-laid Removable bathing ladder Stern bollards on transom wings and tie-down cleats on beach door Garage houses 1 x 6.2m tender, 1 x three seater, and 1 x two seater jet skis (tenders optional, subject to size and weight restrictions) Tender launch and recovery system Access via watertight door and fire doors to engine room through stair lobby and 'control room' (port side) Access via watertight door to 'workshop' and engine room (starboard side) Emergency steering location

FOREDECK

Coachroof sunbed recess with cushions and protective cover Coachroof storage lockers for fenders and rope Foredeck upholstered seating area. Two Speakercraft speakers linked to the Saloon AV system Large forward and side coachroof lockers Ships bell with stainless-steel mounting hoop Access hatch to Bosun's Locker Port and starboard stainless steel bollards and fairleads Freeing ports Anchor windlasses mounted on deck level stainless-steel rope handling plates, with built in drains Wing stations on port and starboard sides of the wheelhouse Two small removable low level tables for seating area Teak-laid decks **Audio Visual:**

1 x Speakers Sonance extreme VP65R-XT 6.5" pair (2 x Speakers = 1 x Pair) (Mounted in fwd face of foredeck walkthrough) 1x Sonos Connect

AFT UPPER DECK

Teak dining table to seat twelve guests Twelve chairs for dining table Bar unit with stone effect work surface and teak doors, incorporating fridge, sink and general storage Wine Cooler Four Speakercraft speakers and one passive bass sub-woofers linked to the Sky Lounge AV system Feature stainless-steel and teak stairs leading up to sundeck Integral teak-laid stairway leading down to main aft deck LED overhead, low level, and accent lighting Stainless balustrade incorporating liferaft stowage Curved manual sliding doors leading to Sky Lounge Teak-laid decks **Audio Visual:** 2x Speakers Sonance extreme VP65R-XT 6.5" pair (4 x Speakers = 2 x Pairs) (Mounted in headlining) 1 x Subwoofer SpeakerCraft 8.2 BAS (Mounted low level) 1 x Amplifier lexicon DD8 8 Channel 1x Sonos Connect

SUNDECK

Loudhailer/fog horn Twin air horns (collision regulation approved) Two four seater upholstered sofas Central removable coffee tables Central bar unit with stone effect work surface with under-counter cupboard storage, stainless-steel sink with mixer tap and chopping board, fridge, coolbox and ice-maker Forward port and starboard units with worktops, housing dumb waiter and twin electric BBQ and bin on the port side, and general storage on the starboard side Units 'straddle' companionway door/skylight leading to crew stair to wheelhouse Six person spa with feature teak framework, incorporating forward facing seating for three persons, and steps to the aft end.

Three sun loungers at the aft end Stainless-steel aft safety rails Stainless-steel balustrade and teak stair treads down to aft upper deck LED overhead and low level feature lighting Six Speakercraft speakers and passive bass sub-woofer linked to the Sky Lounge AV system Teak-laid decks to specific feature layout Overhead rain shower mounted in hardtop Radar arch structure (optional hardtop available incorporating sliding soft-top) **Audio Visual:** 3 x Speakers Sonance extreme VP65R-XT 6.5" pair (6 x Speakers = 3 x Pairs) (Mounted in headlining) 1 x Subwoofer SpeakerCraft 8.2 BAS (Mounted low level) 1 x Amplifier lexicon DD8 8 Channel 1 x Sonos Connect

WHEELHOUSE

Entrance from port and starboard doors to Captain's Cabin and Crew Office Upholstered and fully equipped wheelhouse console Central Captain's leaning support Two fully adjustable helm seats, one on either side of leaning support Raised sofa aft of Wheelhouse Pantograph access doors to side decks, wing stations and foredeck Chart table with white/red chart light and chart and instrument storage 230v outlet sockets Toughened glass windscreen and side screen (clear for night vision) with anti-reflective base Fire extinguisher Air conditioning/heating outlets and windscreen demist system Overhead LED and concealed lighting with dimming, changing from white day lighting to red night lighting Clock and barometer Storage for charts, publications and signal flags Four 19" flush mounted screens, integrated to the vessels navigation, monitoring and CCTV system Rudder indicator indicating rudder angle position via Ship's Monitoring System Full engine instrumentation and control system is via the Ship's Monitoring System with clever key start control. Bilge levels are monitored in all areas via low and high level alarms integrated into the vessels monitoring system. The zoned fire warning panel fitted in the wheelhouse (with associated smoke and heat detectors) is also interfaced with the main monitoring and control system. Galley shut down activation button Timber effect non slip flooring

UPPER DECK PANTRY

Entrance from Sky Lounge and Crew Office Stone worktops Stainless-steel sink with mixer tap Overhead and under counter storage Under counter Miele integrated fridge Icemaker Dumb Waiter from Main Pantry and Sundeck Overhead LED lighting Air conditioning outlet 230V outlets Fire extinguisher Toughened tinted glass side window to port with venetian blinds Timber effect flooring

UPPER LOBBY

Staircase leading to sundeck and main deck Entrance from Main Guest Stairwell, Sky Lounge and Crew Office Powered sliding door to Sky lounge Overhead LED lighting with dimming 230v outlet Timber bulkheads with feature panel Timber floor

UPPER DAY HEAD

Entrance from Upper Lobby Freshwater 'quiet flush' series macerator toilet Semi-recessed washbasin with countertop mounted taps and mirror above Storage below basin comprising of open shelf and cupboard below Day head accessories Overhead LED and concealed lighting Air conditioning outlet Extractor fan Stone countertop and floor, mosaic tiles splash back

SKY LOUNGE

Entrance from Upper Lobby, Aft Upper Deck and upper Pantry Aft manually operated double opening curved stainless-steel trimmed sliding door with tinted toughened glass sliding doors with fabric curtain (with black-out lining) on wave system Large L-shaped sofa to starboard Two occasional chairs Small circular side table Large circular coffee table / pouffe with removable tray Sideboard unit to port with feature timber grain detail and leather top Table lamp on port sideboard Low AV storage unit to forward starboard side with feature grain detail and leather top 46" LED TV wall mounted on forward bulkhead Surround sound system with CD/DVD/Radio comprising five flushmount speakers and subwoofer Harmon Kardon Bluetooth device Telephone with intercom facility Overhead LED and concealed lighting with dimming Large panoramic tinted toughened glass windows to port and starboard sides with manual black-out and plissé blinds 230v outlets Air conditioning outlets Feature bookcase recess on forward bulkhead with lighting Timber flooring with rug on top of floor on the starboard side seating area Timber bulkhead forward and aft with quartered grain detail **Audio Visual:**

1 x 40" Samsung HD LED TV (with 3D capability) 1 x Harmon Kardon 5.1 BDS 570 3D Bluray (c/w sub) 1 x Harmon Kardon subwoofer (c/w cable) 5 x Speaker single KEF CI160QR (235mm DIA 98mm depth) (centre speaker kef CI160QR mounted in headlining) 1 x Harmon Kardon Bluetooth module

LOWER DECK LOBBY

Staircase from main deck leading to lower deck guest cabins Overhead LED and concealed lighting with dimming Storage cupboard below stairs Fire extinguisher 230v outlet Carpet

MAIN DECK MASTER STATEROOM AND EN-SUITE

Ante Room: Entrance from Mid Guest Lobby Writing desk with drawers, leather top and feature trim Desk lamp One desk chair One occasional chair Open shelving unit with upholstered shelf and backs and shelf upstands inboard with cupboards at either end and below 32" LED TV (connected to Stateroom AV system) Telephone with intercom facility Overhead LED and concealed lighting with dimming Large tinted toughened glass window to starboard with blackout blind and roman blind 230v outlet Air conditioning outlet Powered sliding door to Master Stateroom Carpet **Audio Visual:**

1 x 32" Samsung HD LED TV (with 3D capability) 1x Harmon Kardon 2.1 BDS 270 3D Bluray (c/w sub) 1 x Harmon Kardon subwoofer 230V (c/w cable) 2x Speaker single KEF CI1390QR 194mm DIA 83mm depth (mounted in headlining) 1 X Harmon Kardon Bluetooth module

Master Stateroom: Entrance from ante room Oversized (UK super king) berth with pocket-sprung mattress and drawers below Fully upholstered berth frame and headboard Bedside tables with leather tops and single drawer front Bedside light mounted on each bedside table Two armchairs to port side Coffee table to port side Sideboard unit to starboard with leather clad doors Stainless-steel mini bar fridge (80 litres capacity) Bottle and glassware storage Full-height leather and timber clad privacy screen forward of berth 46" LED TV mounted on aft face of privacy screen Storage unit below television with leather top Surround sound system with CD/DVD/Radio comprising of five flushmount speakers and subwoofer Harmon Kardon Bluetooth device Overhead LED and concealed lighting with dimming Large panoramic tinted toughened glass windows on port and starboard sides with black-out blinds and roman blinds 230v outlets Air conditioning outlets Carpet **Dressing area:** Dressing table unit forward of privacy screen with leather top and drawer fronts below Dressing table chair Circular feature mirror above vanity unit 230v outlet Air conditioning outlet Overhead LED lighting with dimming Carpet **Walk-in Wardrobes:** Port and starboard matching walk-in wardrobes, timber lined comprising of: Full height hanging Half height hanging Drawers Shelves Shoe storage rails Large digital safe Carpet **Audio Visual:**

1 x 46" Samsung HD LED TV (with 3D capability) 1 x Harmon Kardon 5.1 BDS 570 3D Bluray (c/w sub) 1 x Harmon Kardon subwoofer (c/w cable) 5 x Speaker single KEF CI160QR (235mm DIA 98mm depth) (centre speaker kef CI160QR mounted in headlining) 1 x Harmon Kardon Bluetooth module

En-Suite Bathroom: Entrance from Dressing Area Two semi-recessed washbasins with wall mounted taps and mirror above with concealed cabinets Storage below basin comprising of open shelf and cupboard below Bathroom accessories Stone tops and flooring, mosaic tiled splashback Feature stone bulkheads with horizontal groove detail Large spa bath to starboard with stone top surround, cascade bath filler and hand held shower Feature bulkhead above bath Recessed feature shelves with mosaic tile back panel Toilet compartment accessed via glass door Freshwater 'Quiet Flush' macerator toilet Bidet Shower compartment with glass door, overhead rain shower, hand shower and body jets Recessed feature shelves with mosaic tile back panel Underfloor heating with switch Heated towel rail with switch Overhead LED and concealed lighting with dimming Frosted glass skylight panels in ceiling providing natural light Emergency escape hatch in ceiling 120/230v razor socket Air conditioning outlet Extractor fans in shower compartment, toilet compartment and above bath

AFT VIP STATEROOM AND EN- SUITE

Entrance from lower lobby Full beam stateroom Oversized (UK superking) berth with pocket-sprung mattress and drawers below Fully upholstered berth frame and headboard Bedside tables with leather tops and single drawer fronts Two bedside lights mounted on pillars behind

bedside tables Large L-shaped sofa to port Coffee table to port Dressing table to starboard with drawers, jewellery and make-up compartment with hingeup mirrored lid Dressing chair Cupboard and drawer storage with leather fronts 40" LED TV fitted on forward bulkhead CD/DVD/Radio system with five flushmount speakers and sub-woofer Harmon Kardon Bluetooth device Telephone with intercom facility Overhead LED and concealed lighting with dimming Four large fixed portlights port and starboard with black-out blind and roman blind 230v outlets Air conditioning outlets Carpet **Walk-in wardrobe:** Timber lined comprising of: Full-height hanging Half-height hanging Large digital safe Full-height mirror Overhead LED lighting with dimming 230v outlet Carpet **En-suite Bathroom:** Freshwater 'Quiet Flush' macerator toilet Bidet Two semi-recessed washbasins with wall mounted taps and mirror above with concealed cabinets Storage below basin comprising of open shelf and cupboard below Bathroom accessories Stone tops and flooring, mosaic tiled splashback Feature stone shower bulkheads with horizontal groove detail Large spa bath to port with stone top surround, cascade bath filler and hand held shower Shower compartment with glass door, overhead rain shower and hand shower Recessed feature shelves with mosaic tile back panel Underfloor heating with switch Heated towel rail with switch Overhead LED and concealed lighting with dimming Fixed portlight with venetian blind 120/230v razor socket Air conditioning outlet Extractor fans in shower compartment and above bath **Audio Visual:**

1 x 40" Samsung HD LED TV (with 3D capability) 1 x Harmon Kardon 5.1 BDS 570 3D Bluray (c/w sub) 1 x Harmon Kardon subwoofer (c/w cable) 5 x Speaker single KEF CI160QR (235mm DIA 98mm depth) (centre speaker kef CI160QR mounted in headlining) 1 x Harmon Kardon Bluetooth module

FORWARD VIP STATEROOM AND EN_SUITE

Entrance from Lower Lobby Oversized (UK superking) berth with pocket-sprung mattress and drawers below Fully upholstered berth frame and headboard Bedside tables with leather tops and single drawer fronts Two bedside lights mounted on pillars behind bedside tables Open shelving unit with upholstered recesses and shelf upstands to port with cupboard below Double wardrobe with full and half height hanging, shelf and drawer storage Illuminated frosted glass light panel above hanging spaces Large digital safe Dressing table to port, jewellery and make-up compartment with hinge-up mirrored lid Dressing chair 32" LED TV fitted on bulkhead CD/DVD/Radio system with two flushmount speakers and sub-woofer Harmon Kardon Bluetooth device Telephone with intercom facility Overhead LED and concealed lighting with dimming Three large fixed portlights to port with black-out blind and roman blind 230v outlets Air conditioning outlets Carpet **En-suite bathroom:** Freshwater 'Quiet Flush' macerator toilet Bidet Two semi-recessed washbasins with countertop mounted taps and mirror above with concealed cabinets Storage below basin comprising of open shelf and cupboard below Bathroom accessories Stone tops and flooring, mosaic tiled splashback Feature stone shower bulkheads with horizontal groove detail Large spa bath to starboard with stone top surround, cascade bath filler and hand held shower Shower compartment with glass door, overhead rain shower and

hand shower Recessed feature shelves with mosaic tile back panel Underfloor heating with switch Heated towel rail with switch Overhead LED and concealed lighting with dimming Three large fixed portlights with venetian blind 120/230v razor socket Air conditioning outlet Extractor fans in shower compartment and above bath **Audio Visual:**

1 x 32" Samsung HD LED TV (with 3D capability) 1 x Harmon Kardon 2.1 BDS 270 3D Bluray (c/w sub) 1 x Harmon Kardon Subwoofer 230V (c/w cable) 5 x Speaker single KEF CI160QR 235mm DIA 98mm depth (centre speaker KEF CI160QR mounted in headlining) 1 x Harmon Kardon Bluetooth module

PORT GUEST CABIN AND EN-SUITE

Entrance from Lower Lobby Twin oversized single berths with pocket-sprung mattresses and drawers below Fully upholstered berth frames and headboards Bedside table with leather top and single drawer front Bedside light mounted on pillar behind bedside table Double wardrobe with full and half height hanging, shelf and drawer storage Illuminated frosted glass light panel above hanging spaces 26" LED TV fitted on bulkhead CD/DVD/Radio system with two flushmount speakers and sub-woofer Harmon Kardon Bluetooth device Telephone with intercom facility Overhead LED and concealed lighting with dimming Two large fixed portlights to port with black-out blind and roman blind 230v outlets Air conditioning outlets Carpet **En-suite**

bathroom: Freshwater 'Quiet Flush' macerator toilet Semi-recessed washbasin with wall mounted taps and mirror above Storage below basin comprising of open shelf and cupboard below Bathroom accessories Stone tops and flooring, mosaic tiled splashback Feature stone shower bulkheads with horizontal groove detail Shower compartment with glass door, overhead rain shower and hand shower Recessed feature shelves with mosaic tile back panel Underfloor heating with switch Heated towel rail with switch Overhead LED and concealed lighting with dimming Fixed portlight with venetian blind 120/230v razor socket Air conditioning outlet Extractor fan above shower **Audio Visual:**

1 x 26" Samsung HD LED TV 1x Harmon Kardon 2.1 BDS 270 3D Bluray (c/w sub) 1 x Harmon Kardon subwoofer 230V (c/w cable) 2x Speaker single KEF CI1390QR 194mm DIA 83mm depth (mounted in headlining) 1 x Harmon Kardon Bluetooth module

STARBOARD GUEST CABIN AND EN-SUITE

Entrance from lower lobby Twin oversized single berths with pocket-sprung mattresses and drawers below Fully upholstered berth frames and headboards Bedside table with leather top and single drawer front Bedside light mounted on pillar behind bedside table Double wardrobe with full and halfheight hanging, shelf and drawer storage Illuminated frosted glass light panel above hanging spaces 26" LED TV fitted on bulkhead CD/DVD/Radio system with two flushmount speakers and sub-woofer Harmon Kardon Bluetooth device Telephone with intercom facility Overhead LED and concealed lighting with dimming Two large fixed portlights to starboard with black-out blind and roman blind 230v outlets Air conditioning Carpet **En-suite**

bathroom: Freshwater 'Quiet Flush' macerator toilet Semi-recessed washbasin with wall mounted taps and mirror above Storage below basin comprising of open shelf and cupboard below Bathroom accessories Stone tops and flooring, mosaic tiled splashback Feature stone shower bulkheads with horizontal groove detail Shower compartment with glass door, overhead rain shower and hand shower Recessed feature shelves with mosaic tile back panel Underfloor heating with switch Heated towel rail with switch Overhead LED and concealed lighting with dimming Fixed portlight with venetian blind 120/230v razor socket Air conditioning outlet Extractor fan above shower **Audio Visual:**

1 x 26" Samsung HD LED TV 1x Harmon Kardon 2.1 BDS 270 3D Bluray (c/w sub) 1 x Harmon Kardon subwoofer 230V (c/w cable) 2x Speaker single KEF CI1390QR 194mm DIA 83mm depth (mounted in headlining) 1 x Harmon Kardon Bluetooth module

INTERIOR DETAILS

Interior Timber Finishes

Interior timber finishes are a combination and choice of Serotina Cherry, Light Oak, Walnut, Wenge and Macassar Ebony. These are finished in a high gloss or satin finish in Princess's own world class manufacturing facility. These timbers, although a natural product, are constantly assessed to maintain continuity of colours and quality on each and every craft. All furniture cappings are manufactured from solid timber.

Whilst every effort is made to match veneers, wood is a natural product and hence will be subject to natural variations.

To compliment the timber finishes, some bulkheads may be dressed with soft materials from our extensive range of Princess lining fabrics.

Bathrooms

All guest cabins have en-suite bathrooms which feature marble/granite floors, worktops and selected bulkheads to the owner's specification. Ceramic mosaic tiles from the Original Styles range are fitted to splash backs, feature alcoves and floor sections. Fixed portlights providing natural light combined with mirrors, LED overhead and concealed lighting maximise the feeling of light and spaciousness. Each cabin is fitted out with the following high quality fixtures and fittings

- Samuel Heath deck and wall mounted mixer taps.
- Samuel Heath overhead rain shower, hand shower, body jets (master only) and mixer valves)
- Samuel Heath accessory range including toilet brush and holder, toilet roll holder, toothbrush tumbler and holder, soap dispenser and rope hooks.
- Dimplex heatmiser underfloor heating, electrically operated.
- JIS Europe heated towel rails

- Dometic 8900 'quiet flush' series, freshwater macerator toilets. 17" seat height/18.125" overall height;18.625" depth x 14.75" width.
- Dometic bidets.
- Perrin and Rowe semi-recessed porcelain washbasins.
- Air conditioning outlet.
- Fixed portlights with window dressing.
- Cupboard and drawer storage.
- Mirror
- Extractor fan.
- Vimar Eikon – Anthracite 230/115v 50Hz razor socket.
- Quick LED overhead and concealed lighting

Interior Floors The Princess standard range of floor coverings consist of high quality natural materials. The range includes all wool textured and velvet pile carpets, polished stone and timber. To promote comfort and quality carpets are fitted with underlay, stone and wooden floors with suitable rigid backing materials. Interior structural floors are manufactured using advanced infused composite panels, and providing rigidity suitable for a sea going vessel. Floor coverings are of the most appropriate materials to achieve the best possible combination of comfort and quality.

- Saloon and Skylounge areas are laid with a choice of timber floors, finished with a satin varnish.
- Cabins are laid with a choice of woollen carpets and are all fitted with underlay for comfort and quality.
- Guest heads and shower areas are laid with a choice of natural marble and granites with rigid lightweight backings.
- Wheelhouse areas are laid with durable non slip Amtico flooring in a choice of finishes.
- Galley areas are laid with durable non slip Altro flooring in a choice of finishes.
- Crew mess and pantry areas are laid with durable non slip Amtico flooring in a choice of finishes.
- Crew cabins are laid with carpet.
- Crew heads and shower areas are laid with either Teak or Walnut timber floors, caulked and oiled.
- Crew mess floor and stair treads from main deck are laid with durable non-slip Amtico flooring

Upholstery and Seating

Fabrics and lining materials used throughout the craft are sourced from worldwide quality suppliers. These materials are chosen where appropriate by the owner from our extensive range, other areas are specified for reasons of comfort and design integrity.

- World leading Vispring pocket sprung mattresses used throughout craft.
- Hand made quilts chosen from the beautiful Princess range supplied to all cabins (excluding crew cabins).

- Sheets (one set for each berth) are provided for guest and crew berths comprising of top sheet, fitted bottom sheet and two pillowcases per person

Princess seating and relaxation areas are designed from the start to blend with overall layout of the craft, and be tailored to create a bespoke interior feel.

Fabrics and leathers can be selected from the Princess 'Standard' or 'Platinum' range.

Dining chairs are chosen to complement the style of furniture on the craft, fabrics and leathers can be selected from the 'Standard' or 'Platinum' range where appropriate.

- Seat bases are webbed for comfort and are either webbed or sprung
- Cushions are pocket filled with a hybrid mixture of feather and foam.
- European leather seating ethically produced for minimum environmental impact.
- All blinds are manual operation throughout, but can be upgraded to electrical operation upon request.

ENGINES, GEAR BOX AND GENERATORS

2 x MTU Marine Diesel Engines.

Model 12V 4000 M93L with ZF7600A gearbox 2 x 3,509HP @ 2100 rpm with 2250 Hours as of 5/2019

Main Generators

Two MDDCJ 80kW Onan QD (Quiet Diesel) generators running at 1500rpm (50Hz). with 9000 hours as of 5/2019 Emergency Generators 13.5kW Onan with 85 hours. Watermakers have 1250 hours.

NAVIGATION AND COMMUNICATION EQUIPMENT

Navigation Equipment

- Furuno 2117BB NAVnet 3D MARPA Black Box Radar/chart plotter with DRS6A 6kW 6½' 9GHz open array scanner connected to 4 x 19" TFT displays (with keyboard control unit) in the wheelhouse
- Furuno Nextex NX700B
- Simrad AP50 Autopilot
- Furuno SC-50 Satellite Compass linked with Navpilot system
- Furuno WS200 wind instrument
- Furuno DS80 Log
- Furuno FE700 Echo Sounder
- Furuno GP150 GPS connected to Chart Plotter
- Simrad IS80 Rudder Angle Indicator

- Magnetic compass in the Wheelhouse

Communication Equipment

- Sailor 6222 Class A, DSC, VHF radio
- Ray 430 Internal Crew Intercom (Foredeck, Port Wing, Stbd Wing & Em Steering)
- Secondary Furuno GPS unit interfaced with the VHF
- Furuno FA150 AIS Type A with display
- Sailor 6006 message terminal and 6150 mini C
- 2 x ICOM IC-GM1600E GMDSS VHF hand held radios (with 2 x sealed, date stamped spare batteries of high capacity providing greater than 1 hour operation)
- VHF GMDSS Safety Message Card
- SART
- 406MHz EPIRB

Internal Communications

- Panasonic KX-TDA PABX telephone/intercom system, comprising fixed Jacob Jensen handsets in all Guest Cabins, Saloon, Bridge, Galley, Captains' cabin and crew mess with 2 DECT mobile handsets for external/sundeck use
- Telephone/intercom system connected to GSM and shoreline input
- For crew communications a Ray430 4 station intercom system is provided with dedicated stations located in the Wheelhouse (master unit), Foredeck, Emergency Steering Position, Port and Starboard Wing Stations
- Fixed wireless terminal connected to telephone system giving voice, data and WLAN access point over a quad band GSM system
- 2 x Motorola digital two way radio handsets with base charger

Additional Helm Equipment

- Air horns
- ACR RCL300 remote searchlight with independent remote controls located in the Wheelhouse
- BCS Trim Tab remote controls with position indication on Ship's Monitoring System
- Five Pantograph windscreen wipers with two speed, intermittent and fresh water screen wash system
- Night lighting
- Air-conditioning (and heating outlets) incorporating screen demist facility
- Fire Extinguisher
- Clock and Barometer
- Hand held Loudhailer with internal batteries Additional equipment may be specified optionally.

Wing Stations

Port and Starboard wing / docking stations are provided with controls for the following:

- Bow thruster (isolation)
- Stern thruster (isolation)
- Engine controls, including stop / start and emergency stop (isolation)
- Horn
- Steering joystick
- Simrad IS40 Display

HYDRAULIC SYSTEMS AND THRUSTERS

THRUSTERS: Bow Thruster ABT TRAC fitted in a 509mm (20”) GRP bow tunnel.

Stern Thruster ABT TRAC fitted in a 406mm (16”) GRP stern thruster housing.

Both thrusters are controlled via a dual joystick using a proportional control system fitted in wheelhouse and each wing station. Both bow and stern thrusters will operate at full thrust with both main engines running at idle speed.

WINDLASSES AND AFT CAPSTANS:

The two foredeck anchor windlasses (with rope capstans) are a hydraulically powered Lewmar model

The two aft capstans are a hydraulically powered Lewmar Model, with a single direction of rotation.

Electrical controls operated by hand (windlasses) or foot (capstans), via button or switch are located locally to each unit. Hydraulic and electrical isolation of this equipment is controlled via a deck function button situated in the wheelhouse.

TRIM TABS:

The boat is fitted with two hydraulically operated BCS trim tabs to compensate for any operational trim and heel. The trim tab plates are produced from marine grade 316L stainless steel, reinforced to allow for the water pressure.

Each tab is fitted with two dual acting hydraulic cylinders powered by an independent electro-hydraulic power pack. Trim tab control and position indication is provided at the wheelhouse helm position.

Each tab is fitted with two aluminium anodes to provide protection against galvanic corrosion.

PASSERELLE

Opacmare 1434-70 extending three section box gangway; constructed in AISI 316L stainless steel and teak, with stanchions on both sides and designed for passenger boarding up to a

maximum of 150Kg (330 lbs).

- Self-stowing 7 metre, triple extension passerelle fitted to the starboard side.
- Mounted in the top step of the aft stairs, the unit is fitted with manually fitted stanchions and solid handrail on both sides and has discreet lights in the teak tread panels.
- 340mm width of teak grating
- 449mm minimum width at the base of the handrail stanchions
- 593mm maximum width at handrail level
- Local control via cockpit control panel and remote control via key fob
- It is electro-hydraulic operated stowing, raising/lowering and telescopic action and can be controlled with local switches
- Passerelle will include a manufacturer's plate indicating safe working load and maximum design angle of use
- A removable wireless call bell is provided at the end of the passerelle

UPPER DECK CAPTAINS CABIN

Entrance from Wheelhouse Berth with pocket sprung mattress Stowage under and beside berth Bedside lights Wardrobe with mirrored doors, hanging space and shelving Large digital safe Desk with storage and chair Overhead LED lighting with dimming Air conditioning outlet 230V outlets Telephone with intercom facility Fire extinguisher Ship's Monitoring System 8.8" TFT widescreen multifunction display 32" LED TV CD/DVD/Radio system with two speakers and a sub-woofer Harmon Kardon Bluetooth device Toughened tinted glass side windows to starboard with black-out blinds Carpet Upper Deck Captain's Cabin En-suite: Entrance from Captain's Cabin Freshwater "Quiet Flush" series macerator toilet Hand basin with mixer tap and mirror above Storage cupboard below basin Bathroom accessories Overhead LED lighting Shower cubicle with laminate bulkheads, with hand shower on riser rail Extractor fan 120/230v razor socket Toughened tinted glass side windows to starboard with venetian blind Avonite countertop and timber floor **Audio Visual:**

1 x 32" Samsung HD LED TV (with 3D capability) 1x Harmon Kardon 2.1 BDS 270 3D Bluray (c/w sub) 1 x Harmon Kardon Subwoofer 230v (c/w cable) 2x Speaker single KEF CI130QR 194mm DIA 83mm depth (mounted in headlining) 1 x Harmon Kardon Bluetooth module

CREW ACCOMMODATION

CREW MESS AREA

- Entrance from Crew Staircase from Main Deck
- U-shaped upholstered seating
- Timber table with storage below
- Avonite worktop with glass splash back, stainless-steel sink and mixer tap with storage below

- Eye level storage above worktop
- Undercounter fridge
- Miele dishwasher
- Miele stainless-steel microwave
- Overhead LED lighting with dimming
- 230v outlets
- Fire extinguisher
- 32" LED TV on aft bulkhead
- CD/DVD/Radio system with two speakers and sub-woofer
- Harmon Kardon Bluetooth device
- Ships Monitoring System 15" TFT widescreen display
- Furuno 8" display
- VHF DSC radio with speaker
- Air conditioning outlet
- Telephone with intercom facility
- Fixed portlight with blind
- Timber effect non-slip flooring

AUDIO VISUAL:

- 1 x 32" Samsung HD LED TV (with 3D capability)
- 2x Speaker single KEF CI130QR 194mm DIA 83mm depth (mounted in headlining)
- 1 x Harmon Kardon Bluetooth module
- 1x Harmon Kardon 2.1 BDS 270 3D Bluray (c/w sub)
- 1 x Harmon Kardon Subwoofer 230v (c/w cable)

LAUNDRY AREA

- Entrance from crew mess
- Two Miele Professional range washing machines
- Two Miele Professional range tumble dryers
- Avonite worktop with glass splash back and storage cupboards below
- Overhead storage lockers
- Stainless-steel sink with mixer tap
- Overhead LED lighting
- 230v outlets
- Air conditioning outlet
- Access hatch in floor leading to stairs to dry goods store with storage cupboard and shelves with lighting
- Non-slip safety flooring

AFT STARBOARD CREW CABIN

- Entrance from Crew Mess
- Two single berths with pocket sprung mattresses
- Reading lights
- Desk with stool
- Wardrobe with hanging, shelves and light
- Fixed portlight with blind
- 230v outlet
- Air conditioning outlet
- Carpet

En-suite Shower :

- Entrance from Cabin
- Freshwater 'Quiet Flush' macerator toilet
- Washbasin with mixer tap and mirror above
- Storage cupboard below basin
- Bathroom accessories
- Air conditioning outlet
- Overhead LED lighting
- Shower cubicle with laminate Bulkheads, with hand shower on riser rail
- Extractor fan
- 120/230v razor socket
- Fixed portlight with blind
- Timber flooring

FORWARD PORT CREW CABIN

- Entrance from Crew Mess
- Two single berths with pocket sprung mattresses
- Reading lights
- Wardrobe with hanging, shelves and light
- Fixed portlight with blind
- 230v outlet
- Air conditioning outlet
- Carpet

En-suite Shower :

- Entrance from cabin
- Freshwater 'Quiet Flush' macerator toilet

- Washbasin with mixer tap and mirror above
- Storage cupboard below basin
- Bathroom accessories
- Air conditioning outlet
- Overhead LED lighting
- Shower cubicle with laminate bulkheads, with hand shower on riser rail
- Extractor fan
- 120/230v razor socket
- Fixed portlight with blind
- Timber flooring

FORWARD STARBOARD CREW CABIN

- Entrance from Crew Mess
- Two single berths with pocket sprung mattresses
- Reading lights
- Wardrobe with hanging, shelves and light
- Fixed portlight with blind
- 230v outlet
- Air conditioning outlet
- Carpet

En-suite Shower :

- Entrance from cabin
- Freshwater 'Quiet Flush' macerator toilet
- Washbasin with mixer tap and mirror above
- Storage cupboard below basin
- Bathroom accessories
- Air conditioning outlet
- Overhead LED lighting
- Shower cubicle with laminate bulkheads, with hand shower on riser rail
- Extractor fan
- 120/230v razor socket
- Fixed portlight with blind
- Timber flooring

CREW OFFICE

Entrance from Upper Lobby Upper Pantry, Wheelhouse and Crew Stairwell Desk with swing-out stool and storage Cupboard containing AV rack Air conditioning outlet Storage cupboards Overhead LED lighting with dimming Toughened tinted glass side window to port with venetian blind Telephone with intercom facility Fire extinguisher Timber effect floor

FIREFIGHTING AND SAFETY EQUIPMENT

FIREFIGHTING: An overhead sprinkler system is provided for fire extinguishing and boundary / space cooling (if fire is in adjacent space). Three nozzles are situated in the deckhead to enable coverage of the entire garage space.

The sprinkler system is permanently connected to the yacht's fire main. Water is discharge through the sprinkler system using a valve, situated adjacent in the starboard main deck buttress.

SAFETY AND LIFESAVING EQUIPMENT:

- 4 Liferaft 4 x Zodiac Extrem 10 man liferafts with Hammar hydrostatic release with SOLAS A Pack
- 22 SOLAS approved lifejackets (lifejacket lights on each lifejacket)
- 2 Children's lifejackets
- 12 Wessex Mk 8 Non-insulated immersion suits
- 8 OSS Survival Suits
- 4 Lifebuoys – (2 x 4kg with self activating light and smoke signals; 2 x 2.5kg with 30m of buoyant lifeline)
- 4 Line throwers 1 Flare polybottle containing 6 off red and 3 off white parachute flares together with 4 off pin point and 4 off orange smoke hand held flares) 2 Fireguard Fleet suit Fireman's outfits
- 2 Draeger PA94 Plus Breathing Aparatus set
- 2 Draeger P Nova masks
- 4 Draeger steel air cylinders (6l, 200 bar) for breathing apparatus (gives 30 minutes air supply)
- 2 Fireman safety line
- 2 Fireman intrinsically safe torch
- 2 Fireman insulated axe
- 4 Drager Parat C Smoke Hoods 1 Pilot's Ladder, 3.6m long with rubber steps 2 SOLAS No 2 cards
- 1 SOLAS Training manual

-
- 1 Fire (SOLAS) Training manual
 - 3 24" Signalling ball
 - 1 High powered searchlight 1 Waterproof torch 2 Safety and Fire control plan
 - 1 Daylight Signalling Lamp
 - 1 Category A Medical Equipment, excluding Oxygen Set)
 - 1 Oxygen therapy set including masks
 - 1 Category A Additional Equipment (excluding stretcher)
 - 1 Ships Captain Medical Guide
 - 1 Garbage overboard poster
 - 1 Garbage disposal plan sign
 - 1 Zodiac Cadet 340 Inflatible, mounted in the forward rescue boat garage, with Yamaha 15HP short shaft, manual start, outboard motor. 1 SOLAS grab bag for Rescue Craft, containing:
 - 2 Thermal Protective Aids
 - 1 Lifeboat bailer
 - 1 Fire extinguisher
 - 1 Boat hook
 - 1 Safety Ladder 1 High powered search light 2 Heaving line with quiot
 - 1 Inflatable radar reflector
 - 1 Waterproof torch
 - 1 Whistle 1 Liferaft drogue 2 Sponges
 - 1 Hand bearing compass

RECENT SERVICE

- Completed all out of the water works for the five year survey
- Annual survey competed
- New anti-foul.

Exclusions

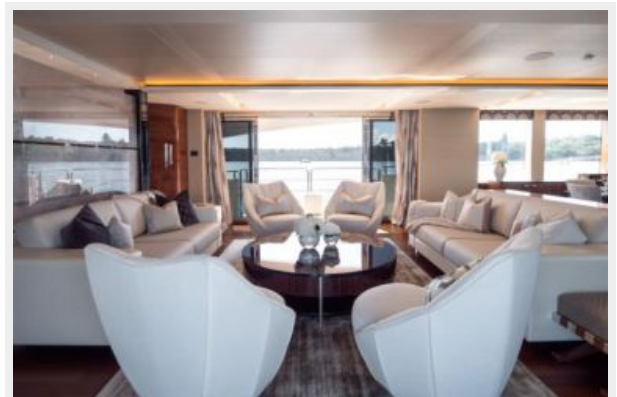
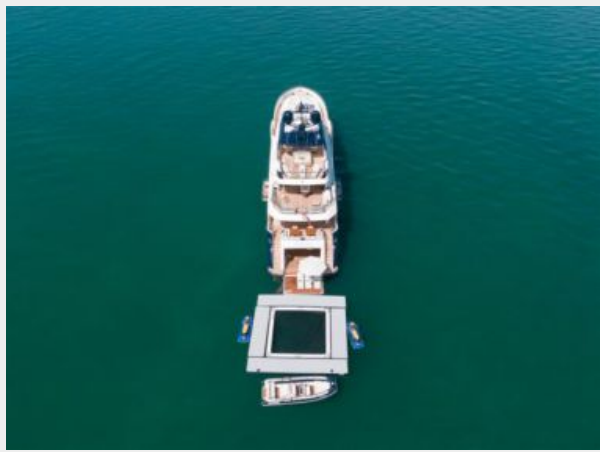
Owner's personal belongings.

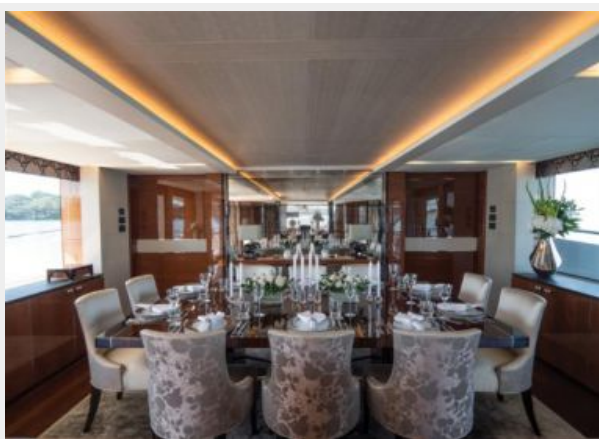
Disclaimer

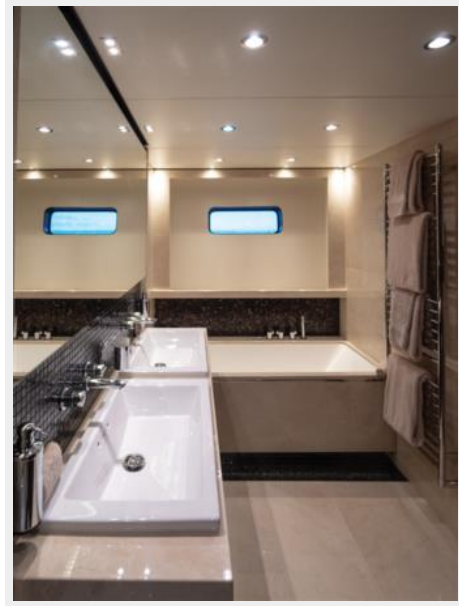
The Company offers the details of this vessel or yacht in good faith but cannot guarantee or warrant the accuracy of this information nor warrant the condition of the vessel. A buyer should instruct his representatives, agents, or his surveyors, to investigate such details as the buyer desires validated. This vessel or yacht is offered subject to prior sale, price change, or withdrawal without notice.

PHOTOS

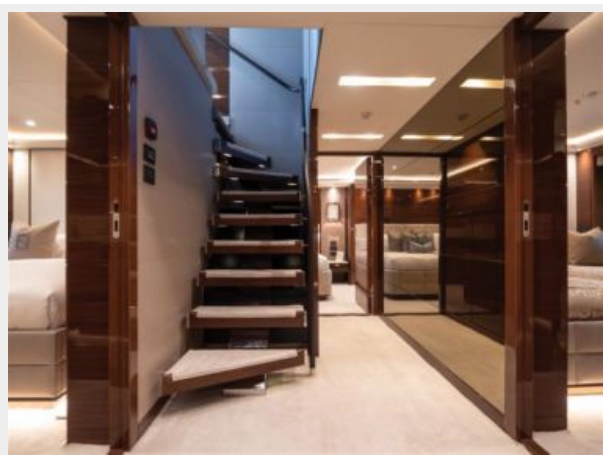
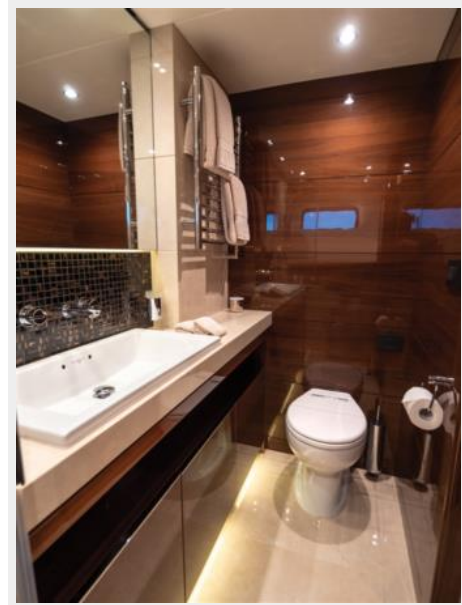


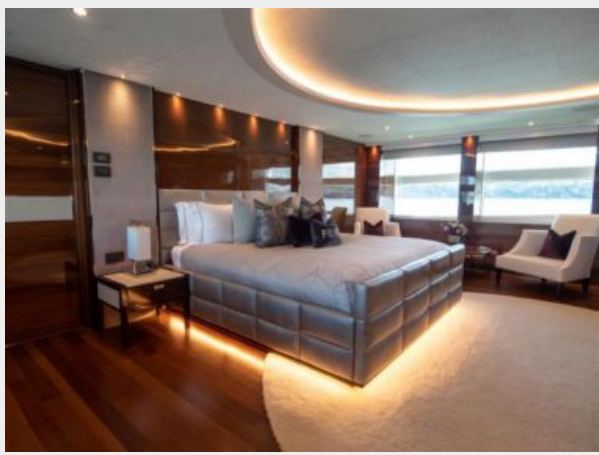


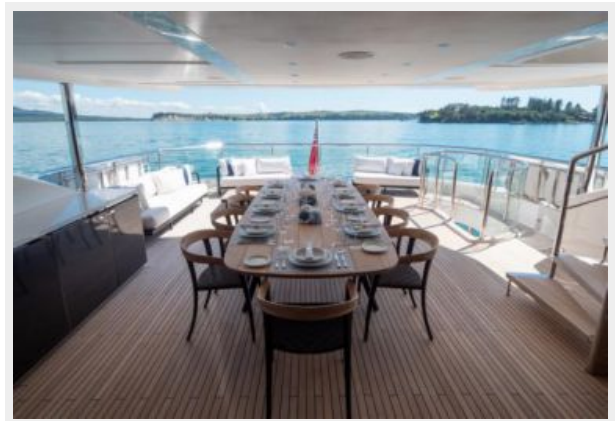


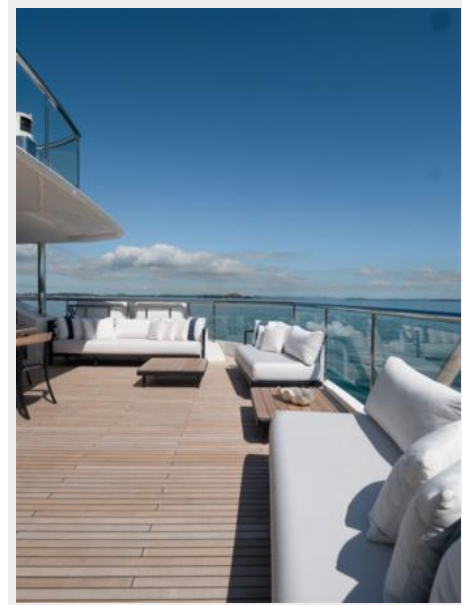
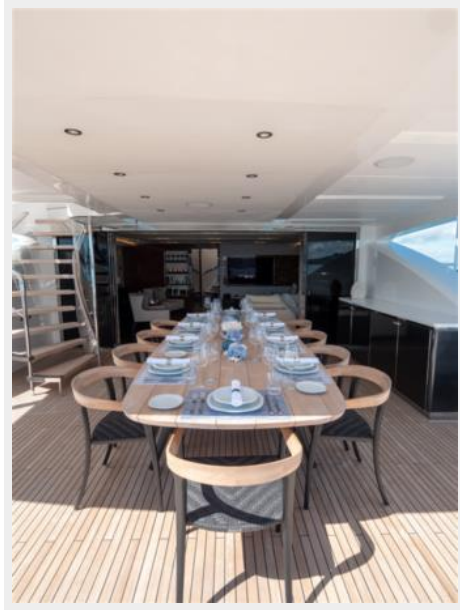






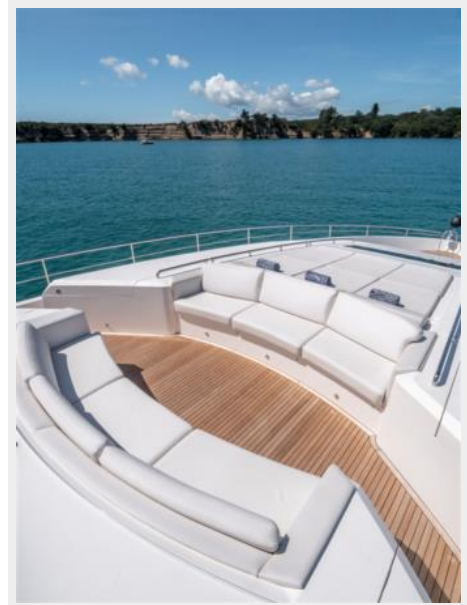
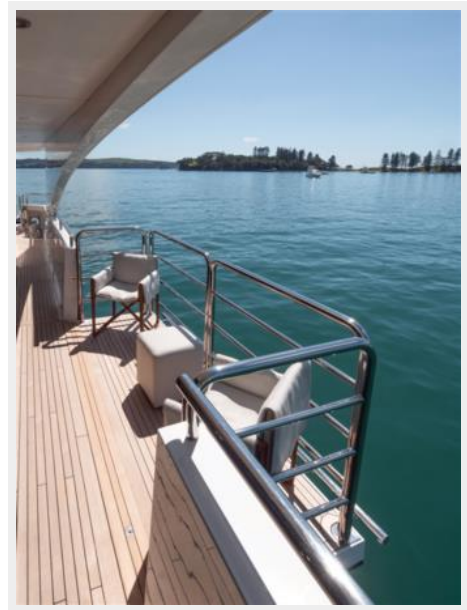


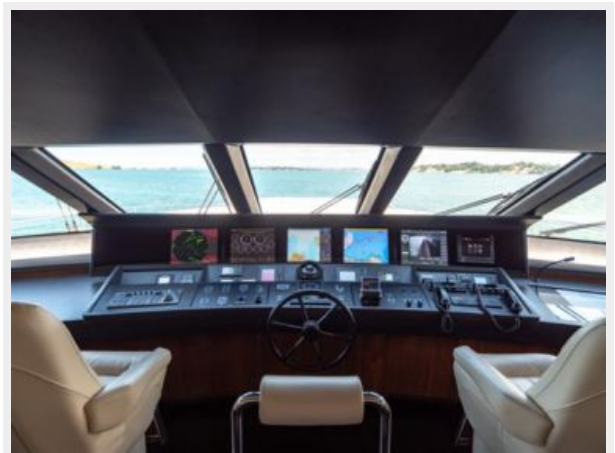


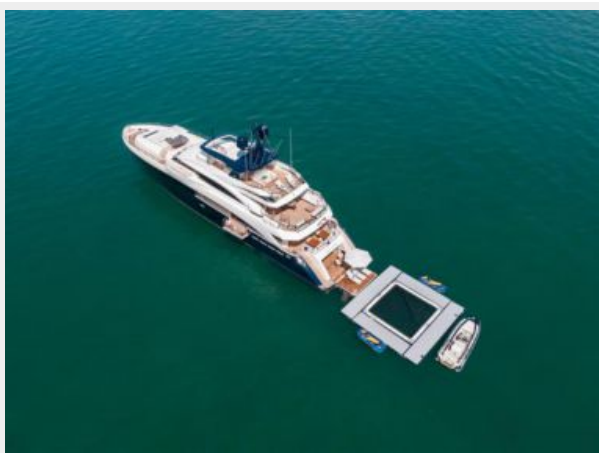
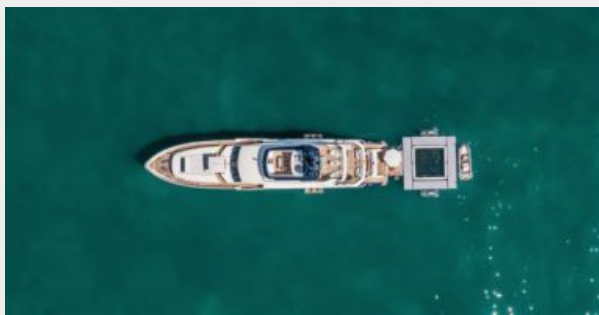
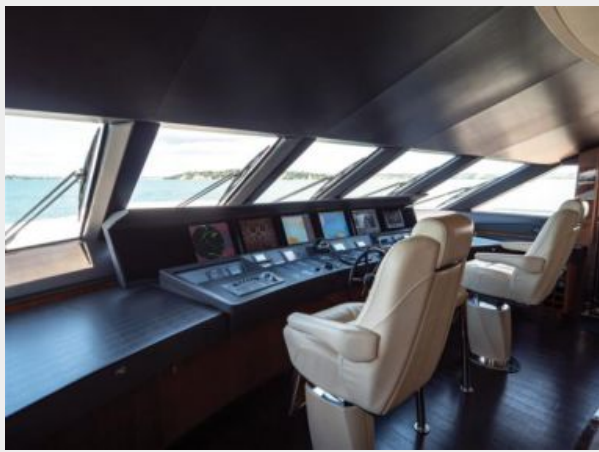














CONTACTS

Andrey Shestakov, leading yacht broker of the sales department of Shestakov Yacht Sales Inc. Shestakov Yacht Sales Inc., the official representative of the Miami/Fort Lauderdale FL headquarters.

Contact details

Email: andrey@shestakovyachtsales.com

Web: shestakovyachtsales.com/en/

Telephones

USA: +1(954)274-4435

Office hours

Monday – Saturday: **9:00 - 21:00** EDT

Sunday: **closed**

Address



Harbour Towne Marina, 850 NE 3rd St,
STE 213, Dania, FL 33004