

## QUALITY TIME — MARLOW



**Судостроитель:** MARLOW

**Год постройки:** 2010

**Модель:** Моторная яхта

**Цена:** ЦЕНА ЯХТЫ ПО ЗАПРОСУ

**Местонахождение:** United States

**Длина общая:** 78' 0" (23.77m)

**Ширина:** 20' 4" (6.20m)

**Макс. осадка:** 5' 0" (1.52m)

**Крейс. скорость:** 22 Kts. (25 MPH)

**Макс. скорость:** 29 Kts. (33 MPH)

Купить **Quality Time — MARLOW** а также выбрать подходящую вам яхту из нашего каталога яхт вам поможет опытный яхтенный брокер Андрей Шестаков. На сегодняшний день компания **Shestakov Yacht Sales Inc.** имеет большое количество яхт в собственном списке продаж, а также тесно сотрудничает со всеми крупными яхтенными производителями по всему миру.

Для того чтобы купить яхту **Quality Time — MARLOW** а также проконсультироваться по любому вопросу связанному с покупкой, продажей, чартером яхт позвоните по телефону **+7(918)465-66-44**.

# ОГЛАВЛЕНИЕ

---

ОГЛАВЛЕНИЕ	2
ХАРАКТЕРИСТИКИ	4
Обзор	4
Основная информация	4
Размеры	4
Скорость, вместимость и масса	4
Размещение	4
Корпус и палуба	5
Информация о двигателе	5
ПОДРОБНОЕ ОПИСАНИЕ	6
Introduction	6
Accommodations	6
Galley	6
Pilothouse	6
Master Stateroom	7
VIP Stateroom	7
Port Mid Guest Stateroom	7
Starboard Mid Guest Stateroom	7
Crew Cabin	7
Flybridge	8
Aft Deck	8
Machinery/Mechanical Equipment	8
Exterior Mechanical Equipment	9
Electronics	9
Electrical	9
In Conclusion	9
Исключения	10
Отказ от ответственности	10

---

ФОТОГРАФИИ	11
КОНТАКТЫ	20
Контактная информация	20
Телефоны	20
Время работы	20
Адрес	20

# ХАРАКТЕРИСТИКИ

## Обзор

Owner will consider all Sport Fish trades 60' - 70'.

## Основная информация

Тип судна: Моторная яхта

Модельный год: 2010

Год постройки: 2010

Страна: United States

Верх: Hardtop

## Размеры

Длина общая: 78' 0" (23.77m)

Ширина: 20' 4" (6.20m)

Макс. осадка: 5' 0" (1.52m)

## Скорость, вместимость и масса

Крейс. скорость: 22 Kts. (25 MPH)

Крейсерская скорость поворота: 2150 Kts.

Макс. скорость: 29 Kts. (33 MPH)

Макс. скорость поворота: 2300 Kts.

Водоизмещение: 100000 Pounds

Вместимость воды: 500 Gallons

Вместимость сточного бака: 200 Gallons Объем топливного бака: 3450 Gallons

## Размещение

Всего кают: 4

Спальные места: 8

Всего ком. состава: 4

Каюты экипажа: 1

## Корпус и палуба

---

**Материал корпуса:** Fiberglass

**Комплектация корпуса:** Modified V-Hull

**Дизайнер корпуса:** David Marlow

## Информация о двигателе

---

**Двигатели:** 2

**Производитель:** Caterpillar

**Модель:** C32

**Тип двигателя:** Inboard

**Тип топлива:** Diesel

---

# ПОДРОБНОЕ ОПИСАНИЕ

---

## Introduction

---

Take advantage of a Yacht ready for cruising! **QUALITY TIME** is exclusively offered for the first time since her current owner/operator has meticulously updated all scheduled and routine vessel maintenance. From her CAT C32 1700hp engines to her Northern Lights 25kw generators, all services have been performed. Varnish, waxing, along with new bottom paint have also been recently completed. Built with an optional custom extended boat deck and hardtop, **QUALITY TIME** offers a far better setting for comfortable exterior entertaining and exploring. **QUALITY TIME** also provides a true four staterooms plus crew's quarters. The vessel's interior and exterior soft goods have also been upgraded providing a modern traditional feel. With her extremely desirable layout matched with her excellent condition, **QUALITY TIME** a great turnkey motor yacht.

## Accommodations

---

Entering from the generous aft deck of **QUALITY TIME**, the salon offers exceptional viewing areas in all directions. Twin settees port and starboard, plus two comfortable easy chairs aft, this immediate area is ideal for conversation and entertainment. As you go forward, there is a dining area for 6, or can be configured as a mini mancave as the current owner currently displays. This area consists of 2 easy chairs and table, which is bordered by a computer desk, storage, china cabinets & TV. There is a wet bar to port including refrigerator, ice maker and sink. Up three steps you enter the galley/pilothouse area, where there is a country style kitchen and dinette forward to port. Views are ideal from this entire area, whether you are cooking or seated. From the pilothouse down the stairway you will arrive at the lower stateroom deck. Immediate to starboard, is an over and under bed cabin at the foot of the stairs. Port, you will find a stateroom with side by side berth and forward down the hall is the ensuite VIP, with king sized berth on centerline. The master stateroom is aft of the above areas, with a full beam and a king-sized berth on centerline. The master stateroom is aft of the above areas, with a full beam and a king-sized berth on centerline.

## Galley

---

• Granite galley and salon countertops • Sub Zero drawer refrigerator/freezers (4) plus 2 extra under counter freezer • Teak & holly flooring throughout galley/pilothouse • Sub Zero wine cooler • Dacor 4 burner cook top • Microwave/Convection oven • Exhaust fan with stainless polished hood • Fisher Paykel Dishwasher • Sink disposal & Stainless Grohe polished faucets

## Pilothouse

---

---

- Teak & Holly flooring, teak blinds
- L shaped teak dining table to port with built in Ultraleather seating
- Full instrumentation and control station on centerline
- Stidd polished stainless helm chair
- Lighted stairway down to staterooms
- Teak stairway to fly bridge to port
- Large chart drawer and bookcases
- Stereo/CD player, A/C controls, Windshield defrosters

## Master Stateroom

---

- Midships master stateroom is full beam with six stainless steel opening ports
- Shoji privacy screens
- Teak & holly flooring
- King sized bed on centerline with large storage drawers underneath
- Vanity with beveled, framed mirror and drawers
- Cedar lined full height hanging lockers (4) in addition to walk in closet
- Flat screen TV and stereo, CD, DVD system
- SidebySide Whirlpool washer and dryer in forward wall storage locker

## VIP Stateroom

---

- King sized bed on centerline with oversized drawers, lockers, and convenient storage areas throughout
- Ocean Aire screens and sun shades
- LCD TV, Stereo
- Cedar lined hanging lockers and vanity
- Ensuite head, stall shower with two doors allowing privacy as the day head
- Teak & Holly flooring

## Port Mid Guest Stateroom

---

- Twin side by side berth layout with teak & Holly flooring and ensuite head and shower
- Full height hanging locker, desk, and stainless opening ports
- Under bed storage drawers and large under deck storage compartment

## Starboard Mid Guest Stateroom

---

- At foot of stairwell, over and under single berths
- Teak & Holly sole with stainless opening ports
- Hanging locker with storage drawers under lower bed
- Flat screen TV
- This cabin shares the head/shower with the forward VIP stateroom

## Crew Cabin

---

- Double crew cabin aft of the engine room with head, shower, microwave, flat screen TV/entertainment center, washer/dryer, and entry under aft deck seating area
- Water tight transom door off swim platform to crew area
- Direct access to large port and starboard lazarette/workshop storage area
- Large hanging locker
- Captains desk with swing out seating

---

## Flybridge

---

• Extended fly bridge hardtop (36 " longer than standard) with radar arch Extended boat deck aft allowing coverage of lower aft deck • Powder coated 1600 lb. davit with hydraulic positioning, rotation and extension features Marlow "Sprite" fiberglass center console dinghy with 40 HP Yamaha 4 stroke engine • New scooters (2) • Flood lights on aft end of hardtop and extended boat deck • Large sun pad to port with gas assist lift up hatches and storage underneath • Combination Uline fridge/icemaker, second Wolf barbecue grill, sink and deck wash down spigot under Extended aft fly bridge railings with removable sections aft for dinghy launching • Optional oval shaped fly bridge railing package Holding brackets for securing scooters • Optional security fiberglass gate between forward seating area and boat deck area • Settee tables in front of L shaped seating area are optional with teak oval gloss finish • 2 Stidd powder coated Helm chairs

---

## Aft Deck

---

• Extremely large area for outside dining, including varnished teak table and seating for six • Overhead protection from extended upper boat deck • Twin transom doors with easy access to lower swim platform • Aft station controls for stern docking ease • Removable N rails on swim platform • 3 rod holders installed on railing stanchions • Additional aft underwater lights

---

## Machinery/Mechanical Equipment

---

- Twin Caterpillar C32 Acert engines with 1700 HP
- ZF 2.461 to one transmissions with Aquadrive flexible shaft couplings
- 2-25 KW Northern Lights generators hours each
- Under water exhaust system
- AGM no maintenance battery package
- Sidepower 20 HP 48 Volt bow and stern thrusters
- Two Glendenning cable master shore power systems
- 900 GPD water maker
- Headhunter fresh water toilet system on all 4 heads
- Naiad model 254 Multi Sea stabilizers with dual station controls
- Chilled water air conditioning system
- Additional AC 1600 BTU system for engine room and crew quarters
- Drypoint demister air intake system
- 4 high volume engine room blowers
- Morse electronic engine controls
- 1600# hydraulic powder coated davit
- Reverso fuel polishing system
- 4 - 3700 GPH bilge pumps with auto/manual switches
- Polished stainless-steel engine beds, risers, and fuel manifolds



- Fire suppressant system
- Engine room lead/foam fiberglass composite insulation for heat and sound
- 3-30 Gallon stainless water heaters
- Newmar 12 and 24v battery chargers plus 4000w Pure sine inverter/charger
- Dual Racor filters with pressure gauges for both main engines and generators
- Central Vacuum system

---

## Exterior Mechanical Equipment

---

- Dual Electric windlass with remote switches and fresh and salt water wash downs
- MarQuipt 5 step boarding ladder with hand railing
- Total of 4 side boarding gates on main deck
- Removable hand rails on swim platform with folding swim steps
- Fresh water wash down on swim platform

---

## Electronics

---

- VEI Dual 17" SunlightGlass Bridge Monitors in pilothouse and fly bridge
- Furuno MFDBB Navnet 3D Processors in pilothouse and fly bridge
- 2 each Furuno Navnet 3D keyboards for pilothouse and fly bridge
- Furuno DRS 12A Navnet 3D 12 KW Radar in pilot house with Open Array Antenna
- Furuno DRS6A 6 KW radar Antenna on Fly Bridge with 4 ft. antenna
- Simrad AP2804 Autopilot with second station on Fly bridge
- FA30 A.I.S. Receiver
- Mariner PC: MG20 Marine Tower with Maxsea Software
- Paradox Marine Magellan vessel alarm/monitoring system
- 2 Iris Innovations Camera monitoring systems
- 2 each Icom M604 VHF radios with flush mount kit, 8 ft. digital antennas, and Hailer Horn
- Furuno DFF1 Navnet Network Depth Sounder
- Furuno 556 TIDHWD 1 KW Wide Beam
- 2 each Furuno FL50 multi instrument displays
- WxWorx XM Satellite Weather Package
- KVH Tracvision M7 Satellite TV System with 24" Domes and HD Controller
- 3 remote KVH Direct TV receivers with remotes
- Iridium 9555 Mobile Sat Phone/External antenna and docking station
- 2 each Clarion CMD5 CD/AM/FM/Sirius Stereos
- Marlow's complete set of Schematics & Engineering drawings for the entire electronic system

---

## Electrical

---

- 2 25 KW Northern Lights Generators
- AGM no maintenance sealed batteries: 4/engine start, 1/generator, 4/house service
- Two Glendinning Shore Power retractable systems (50 Amp each/240 volt)
- 4000w Pure Sine inverter/charger
- Newmar 12v and 24v battery chargers
- 3 Stereo/CD players with speakers throughout
- Bonding system
- Tinned wiring throughout the vessel
- 24v lights in all compartment

---

## In Conclusion

---

---

**QUALITY TIME** represents the latest and most totally equipped Marlow 78 on the market.

## Исключения

---

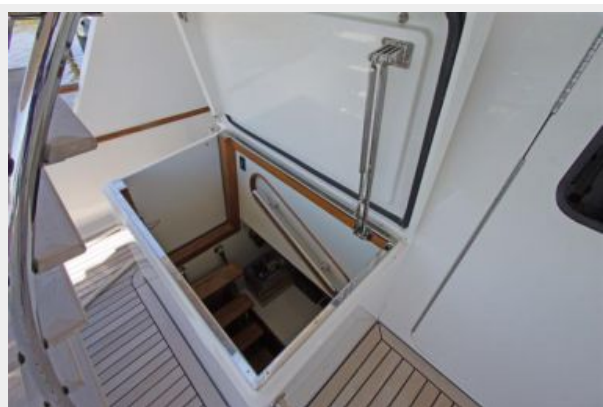
При продаже яхты исключаются личные вещи владельца.

## Отказ от ответственности

---

Компания предоставляет описание судна или яхты добросовестно, но не может гарантировать точность этой информации, а также не ручается за техническое состояние. Покупатель должен проинструктировать своих агентов или оценщиков исследовать представленную информацию более подробно, по собственному желанию. Продажа судна или яхты, изменение цены или снятие с продажи будет происходить без предварительного уведомления.

# ФОТОГРАФИИ

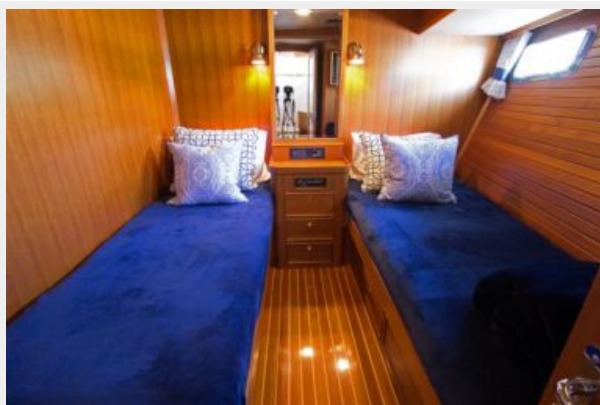




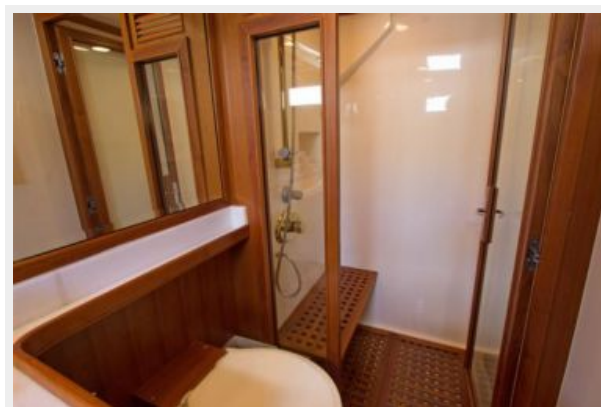


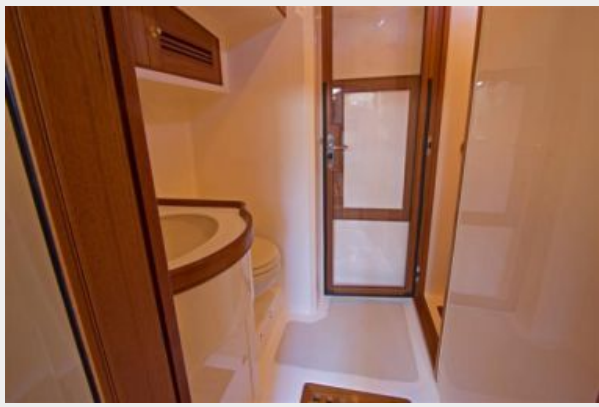














# КОНТАКТЫ

---

Андрей Шестаков (Andrey Shestakov) – ведущий яхтенный брокер отдела продаж яхт и судов компании Shestakov Yacht Sales Inc. Официальный представитель Shestakov Yacht Sales Inc. для русскоговорящих клиентов в центральном офисе компании в Майами/Форт Лодердейл/Флорида/США.

## Контактная информация

---

Email: [andrey@shestakovyachtsales.com](mailto:andrey@shestakovyachtsales.com)

Web: [shestakovyachtsales.com](http://shestakovyachtsales.com)

## Телефоны

---

Краснодарский край: **+7(918)465-66-44**

США, Майами, Флорида: **+1(954)274-4435**

## Время работы

---

Понедельник – Суббота: **9:00 - 21:00**  
EDT

Воскресенье: **Закрыто**

## Адрес

---



Harbour Towne Marina, 850 NE 3rd St,  
STE 213, Dania, FL 33004