

SP 115' — SUNSEEKER



Builder: SUNSEEKER

Year Built: 2011

Model: Motor Yacht

Price: PRICE ON APPLICATION

Location: Hong Kong

LOA: 113' 4" (34.52m)

Beam: 24' 0" (7.32m)

Min Draft: 0' 0" (0.00m)

Max Draft: 8' 0" (2.44m)

Cruise Speed: 19 Kts. (22 MPH)

Max Speed: 26 Kts. (30 MPH)

Our experienced yacht broker, Andrey Shestakov, will help you choose and buy a yacht that best suits your needs **SP 115' — SUNSEEKER** from our catalogue. Presently, at Shestakov Yacht Sales Inc., we have a wide variety of yachts available on our sale's list. We also work in close contact with all the big yacht manufacturers from all over the world.

If you would like to buy a yacht **SP 115' — SUNSEEKER** or would like help answering any questions concerning purchasing, selling or chartering a yacht, please call **+1(954)274-4435**

TABLE OF CONTENTS

TABLE OF CONTENTS	2
SPECIFICATIONS	3
Overview	3
Basic Information	4
Dimensions	4
Speed, Capacities and Weight	4
Accommodations	4
Hull and Deck Information	4
Engine Information	5
DETAILED INFORMATION	6
Features	6
Exclusions	6
Disclaimer	6
PHOTOS	8
CONTACTS	16
Contact details	16
Telephones	16
Office hours	16
Address	16

SPECIFICATIONS

Overview

Predator 115 motor yacht "Manhattan Express II" was built by Sunseeker in United Kingdom at their Poole, Dorset shipyard , she was delivered to her owner in 2011.

With a beam of 7.39m and a draft of 2.48m, this spacious Predator 115 accommodates up to ten guests in five cabins and up to five crew.

Luxury superyacht Manhattan Express II features a hot tub and expansive deck areas on the bow, which really sets this her apart. She is a sleek and very powerful yacht, featuring a striking two and a half deck design.

Manhattan Express II also has the option for a 5.5 metre tender in the stern garage, as well as two Jet-bikes. Toys and tender can be launched via the yacht's submersible bathing platform aft

Powered by twin MTU 16V 2000 M94 engines, M/Y Manhattan Express II can reach a top speed of 25 knots and has a range of up to 1570 nm.

KEY FEATURES

- 5 cabins
- Light interior finishing
- Dark Blue Hull
- TRAC Stabilizers
- TRAC bow & stern thrusters
- Tropical air conditioning
- Large garage to accommodate for 5.4 m tender & jet ski
- Lifting platform
- Seatel SAT TV
- Fore deck lounge area

Basic Information

Category: Motor Yacht

Sub Category: Motor Yacht

Model Year: 2011

Year Built: 2011

Country: Hong Kong

Dimensions

LOA: 113' 4" (34.52m)

LWL: 0' 0" (0.00m)

LOD: 0' 0" (0.00m)

Beam: 24' 0" (7.32m)

Min Draft: 0' 0" (0.00m)

Max Draft: 8' 0" (2.44m)

Clearance: 0' 0" (0.00m)

MFG Length: 0' 0" (0.00m)

Speed, Capacities and Weight

Cruise Speed: 19 Kts. (22 MPH)

Max Speed: 26 Kts. (30 MPH)

Displacement: 308647.1668 Pounds

Gross Tonnage: 236 Pounds

Water Capacity: 1030.799346904 Gallons

Fuel Capacity: 3722.976728836 Gallons

Accommodations

Total Cabins: 5

Total Berths: 7

Sleeps: 10

Total Heads: 6

Hull and Deck Information

Hull Material: GRP

Engine Information

Engines: 2

Manufacturer: MTU

Model: MTU 16V2000M94

Engine Type: Inboard

Fuel Type: Diesel

DETAILED INFORMATION

Features

Predator 115 motor yacht "Manhattan Express II" was built by Sunseeker in United Kingdom at their Poole, Dorset shipyard , she was delivered to her owner in 2011.

With a beam of 7.39m and a draft of 2.48m, this spacious Predator 115 accommodates up to ten guests in five cabins and up to five crew.

Luxury superyacht Manhattan Express II features a hot tub and expansive deck areas on the bow, which really sets this her apart. She is a sleek and very powerful yacht, featuring a striking two and a half deck design.

Manhattan Express II also has the option for a 5.5 metre tender in the stern garage, as well as two Jet-bikes. Toys and tender can be launched via the yacht's submersible bathing platform aft

Powered by twin MTU 16V 2000 M94 engines, M/Y Manhattan Express II can reach a top speed of 25 knots and has a range of up to 1570 nm.

KEY FEATURES

- 5 cabins
- Light interior finishing
- Dark Blue Hull
- TRAC Stabilizers
- TRAC bow & stern thrusters
- Tropical air conditioning
- Large garage to accommodate for 5.4 m tender & jet ski
- Lifting platform
- Seatel SAT TV
- Fore deck lounge area

Exclusions

Owner's personal belongings.

Disclaimer

The Company offers the details of this vessel or yacht in good faith but cannot guarantee or warrant the accuracy of this information nor warrant the condition of the vessel. A buyer should instruct his representatives, agents, or his surveyors, to investigate such details as the buyer

desires validated. This vessel or yacht is offered subject to prior sale, price change, or withdrawal without notice.

PHOTOS

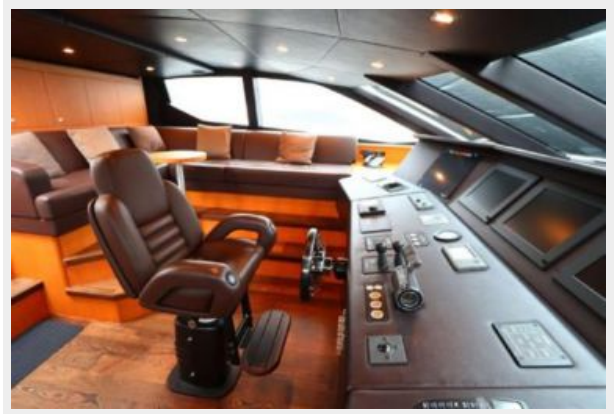


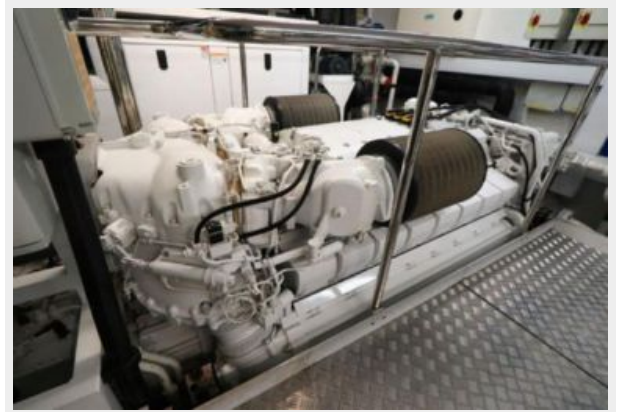


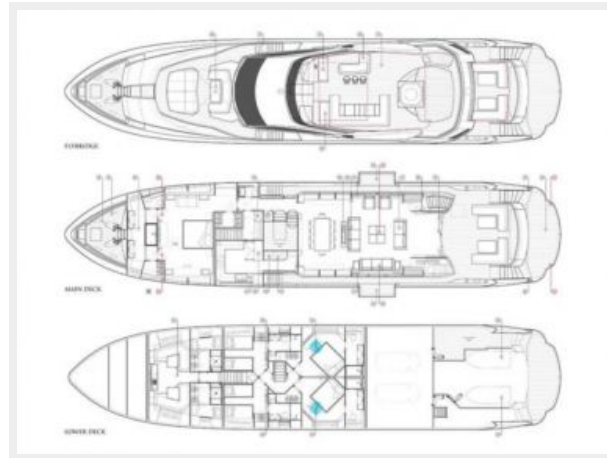












CONTACTS

Andrey Shestakov, leading yacht broker of the sales department of Shestakov Yacht Sales Inc. Shestakov Yacht Sales Inc., the official representative of the Miami/Fort Lauderdale FL headquarters.

Contact details

Email: andrey@shestakovyachtsales.com

Web: shestakovyachtsales.com/en/

Telephones

USA: +1(954)274-4435

Office hours

Monday – Saturday: **9:00 - 21:00** EDT

Sunday: **closed**

Address



Harbour Towne Marina, 850 NE 3rd St,
STE 213, Dania, FL 33004