

OPTETIME



Year Built: 2014

Model: Cruising Yacht

Price: PRICE ON APPLICATION

LOA: 67' 8" (20.62mm)

Cruise Speed: 22 Knots Kts. (25 MPH)

Max Speed: 25 Knots Kts. (29 MPH)

Our experienced yacht broker, Andrey Shestakov, will help you choose and buy a yacht that best suits your needs **Optetime** — n/a from our catalogue. Presently, at Shestakov Yacht Sales Inc., we have a wide variety of yachts available on our sale's list. We also work in close contact with all the big yacht manufacturers from all over the world.

If you would like to buy a yacht **Optetime** — n/a or would like help answering any questions concerning purchasing, selling or chartering a yacht, please call **+1(954)274-4435**

TABLE OF CONTENTS

TABLE OF CONTENTS	2
SPECIFICATIONS	4
Overview	4
Basic Information	4
Dimensions	4
Speed, Capacities and Weight	4
Accommodations	5
Hull and Deck Information	5
Engine Information	5
PHOTOS	6
Salon looking foward	6
Salon (starboard)	6
Salon (Port)	6
Salon looking aft	6
Galley	6
Pilothouse	7
Pilothouse looking to Port	7
Pilothouse Helm	7
Master Stateroom to Starboard	7
Master shower	7
VIP stateroom	8
Port Guest Stateroom	8
Desk in Guest Stateroom	8
Flybridge looking foward	8
Flybridge Helm	8
Crew Quarters	8
Engine Room	9
CONTACTS	10

Contact details	10
Telephones	10
Office hours	10
Address	10

SPECIFICATIONS

Overview

“Optetime” was designed with the most popular arrangement in her size range. She offers 3 spacious staterooms with the added benefit of office area in the port guest and spacious crew quarters. Like her smaller and larger sisters in the ever-expanding Marlow Explorer product line, this 58E (Semi-Enclosed) exhibits amazing volume when compared to typical polyester and woven roving construction vessels often built with inferior plywood bulkheads and wood framed bilges. Please understand this is not the Marlow way! Instead, by eliminating wooden supports, bulkheads and framing in favor of resin infused composite construction we have once again been able to bring a yacht to market with 79" of headroom in the main salon and lower accommodations areas, 74" in the engine room and a total height to the top of the hardtop of just 18'6"! “Optetime” was upgraded to have the folding style radar and electronics masts which make her an excellent candidate for the Great Loop. Additionally this low profile makes a far superior sea boat with a drastically lowered center of gravity, while allowing the yacht to slip under many bridges an ordinary yacht in this size range would have to wait for.

Basic Information

Category: Cruising Yacht

Model Year: 2014

Year Built: 2014

Dimensions

LOA: 67' 8" (20.62mm)

LWL: 54' 4" (16.56mm)

Speed, Capacities and Weight

Cruise Speed: 22 Knots Kts. (25 MPH)

Max Speed: 25 Knots Kts. (29 MPH)

Water Capacity: 300 Gallons

Holding Tank: 125 Gal Gallons

Fuel Capacity: 1500 Gal Gallons

Accommodations

Total Cabins: 2

Hull and Deck Information

Hull Material: Composite

Interior Designer: Marlow Design Team

Engine Information

Engines: 1

Manufacturer: Caterpillar

Fuel Type: Diesel

PHOTOS



Salon looking foward



Salon (starboard)



Salon (Port)



Salon looking aft



Galley



Pilothouse



Pilothouse looking to Port



Pilothouse Helm



Master Stateroom to Starboard



Master shower



VIP stateroom



Port Guest Stateroom



Desk in Guest Stateroom



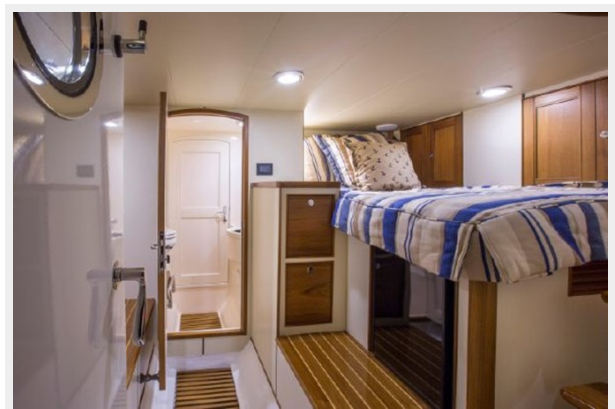
Flybridge looking forward



Flybridge Helm



Crew Quarters



Engine Room



CONTACTS

Andrey Shestakov, leading yacht broker of the sales department of Shestakov Yacht Sales Inc. Shestakov Yacht Sales Inc., the official representative of the Miami/Fort Lauderdale FL headquarters.

Contact details

Email:
andrey@shestakovyachtsales.com

Web: shestakovyachtsales.com/en/

Telephones

USA: **+1(954)274-4435**

Office hours

Monday – Saturday: **9:00 - 21:00 EDT**

Sunday: **closed**

Address



Harbour Towne Marina, 850 NE 3rd St,
STE 213, Dania, FL 33004