

SUNRISE — BENETTI



Builder: BENETTI

Year Built: 2011

Model: SHELBY

Price: PRICE ON APPLICATION

Location: Turkey

LOA: 93' 0" (28.35m)

Beam: 23' 0" (7.01m)

Max Draft: 7' 0" (2.13m)

Cruise Speed: 13 Kts. (15 MPH)

Max Speed: 14 Kts. (16 MPH)

Our experienced yacht broker, Andrey Shestakov, will help you choose and buy a yacht that best suits your needs **SUNRISE — BENETTI** from our catalogue. Presently, at Shestakov Yacht Sales Inc., we have a wide variety of yachts available on our sale's list. We also work in close contact with all the big yacht manufacturers from all over the world.

If you would like to buy a yacht **SUNRISE — BENETTI** or would like help answering any questions concerning purchasing, selling or chartering a yacht, please call **+1(954)274-4435**

TABLE OF CONTENTS

TABLE OF CONTENTS	2
SPECIFICATIONS	4
Overview	4
Basic Information	5
Dimensions	5
Speed, Capacities and Weight	5
Accommodations	5
Hull and Deck Information	5
Engine Information	6
DETAILED INFORMATION	7
Features	7
Exclusions	8
Disclaimer	8
PHOTOS	9
BENETTI SUNRISE (2)	9
BENETTI SUNRISE (3)	9
BENETTI SUNRISE (4)	9
BENETTI SUNRISE (5)	9
BENETTI SUNRISE (6)	9
BENETTI SUNRISE (7)	10
BENETTI SUNRISE (8)	10
BENETTI SUNRISE (9)	10
BENETTI SUNRISE (10)	10
BENETTI SUNRISE (11)	10
BENETTI SUNRISE (12)	10
BENETTI SUNRISE (13)	11
BENETTI SUNRISE (14)	11
CONTACTS	16

Contact details	16
Telephones	16
Office hours	16
Address	16

SPECIFICATIONS

Overview

Benetti Class Delfino 93 motor yacht is a 28.5 meters (93'6") vessel built by the Italian shipyard Benetti of the Azimut-Benetti Group. Delfino 93 motoryacht offers accommodation to up to 10 charter guests in 5 beautifully furnished suites, each with stunning en-suite bathroom. Her interior design is a reflection of professionalism by Carlo Galeazzi, with the exterior styling and concept by Stefano Righini.

Delfino 93 yacht is the first model in the Benetti Class line, reflecting the unmistakable Benetti experience and style. She represents a combination of aesthetically unique line with great comfort and state of the art technology.

For Benetti shipyard Delfino 93 motoryacht is closely linked with their history. The first motor yacht of this name was presented at the 1969 Genoa trade show. The Delfino 93' truly is one of a kind. Its compact dimensions enclose the design solutions, technical equipment and practical, comfortable spaces typical of larger yachts. This has been made possible thanks to the 7-meter wide midship section granting great comfort even at the lower deck, where two spacious VIP cabins and two guest cabins have been arranged.

Below deck there are two large VIP cabins and two guest cabins. The master cabin features a particularly large glass panel, despite the presence of a side passage. The internal areas have been designed by Carlo Galeazzi, obtaining a refined stylistic balance, characterized by an up-to-date contemporary décor. The light – natural and artificial – is also a design element, in particular the inclusion of large continuous tinted glass panels adds to the elegant comfortable atmosphere of the interior.

The exterior design style has been innovated by Stefano Righini and is marked by large, continuous windows that allow the ship owner and his guests to enjoy many different beautiful panoramic views over the sea. The interior decor has been designed by Galeazzi Studio and is available in two different versions: modern and classic style, with extremely elegant details and loose furniture.

Practicality and comfort are guaranteed in the wheelhouse too, whose interiors are designed as a shuttle with large vertical windows. The excellent visibility guaranteed at 180° makes Delfino a joy for the ship owner himself to steer.

KEY FEATURES

- She offers accommodation for up to 10 guests in 5 staterooms
- Zero speed fin stabilizers
- Full displacement hull for increased range of 1500nm and comfortable cruising at

13knots

- Jacuzzi on fly-bridge

Basic Information

Category: SHELBY

Sub Category: Motor Yacht

Model Year: 2011

Year Built: 2011

Country: Turkey

Dimensions

LOA: 93' 0" (28.35m)

Beam: 23' 0" (7.01m)

Max Draft: 7' 0" (2.13m)

Speed, Capacities and Weight

Cruise Speed: 13 Kts. (15 MPH)

Cruise Speed Range: 1500

Max Speed: 14 Kts. (16 MPH)

Gross Tonnage: 152 Pounds

Water Capacity: 607.5957196 Gallons

Fuel Capacity: 4226.752832 Gallons

Accommodations

Total Cabins: 5

Total Berths: 7

Sleeps: 10

Crew Berths: 3

Crew Sleeps: 3

Hull and Deck Information

Hull Material: Composite

Engine Information

Engines: 2

Manufacturer: MTU

Model: MTU 8V2000M72

Engine Type: Inboard

Fuel Type: Diesel

DETAILED INFORMATION

Features

Benetti Class Delfino 93 motor yacht is a 28.5 meters (93'6") vessel built by the Italian shipyard Benetti of the Azimut-Benetti Group. Delfino 93 motoryacht offers accommodation to up to 10 charter guests in 5 beautifully furnished suites, each with stunning en-suite bathroom. Her interior design is a reflection of professionalism by Carlo Galeazzi, with the exterior styling and concept by Stefano Righini.

Delfino 93 yacht is the first model in the Benetti Class line, reflecting the unmistakable Benetti experience and style. She represents a combination of aesthetically unique line with great comfort and state of the art technology.

For Benetti shipyard Delfino 93 motoryacht is closely linked with their history. The first motor yacht of this name was presented at the 1969 Genoa trade show. The Delfino 93' truly is one of a kind. Its compact dimensions enclose the design solutions, technical equipment and practical, comfortable spaces typical of larger yachts. This has been made possible thanks to the 7-meter wide midship section granting great comfort even at the lower deck, where two spacious VIP cabins and two guest cabins have been arranged.

Below deck there are two large VIP cabins and two guest cabins. The master cabin features a particularly large glass panel, despite the presence of a side passage. The internal areas have been designed by Carlo Galeazzi, obtaining a refined stylistic balance, characterized by an up-to-date contemporary décor. The light – natural and artificial – is also a design element, in particular the inclusion of large continuous tinted glass panels adds to the elegant comfortable atmosphere of the interior.

The exterior design style has been innovated by Stefano Righini and is marked by large, continuous windows that allow the ship owner and his guests to enjoy many different beautiful panoramic views over the sea. The interior decor has been designed by Galeazzi Studio and is available in two different versions: modern and classic style, with extremely elegant details and loose furniture.

Practicality and comfort are guaranteed in the wheelhouse too, whose interiors are designed as a shuttle with large vertical windows. The excellent visibility guaranteed at 180° makes Delfino a joy for the ship owner himself to steer.

KEY FEATURES

- She offers accommodation for up to 10 guests in 5 staterooms
- Zero speed fin stabilizers
- Full displacement hull for increased range of 1500nm and comfortable cruising at 13knots
- Jacuzzi on fly-bridge

Exclusions

Owner's personal belongings.

Disclaimer

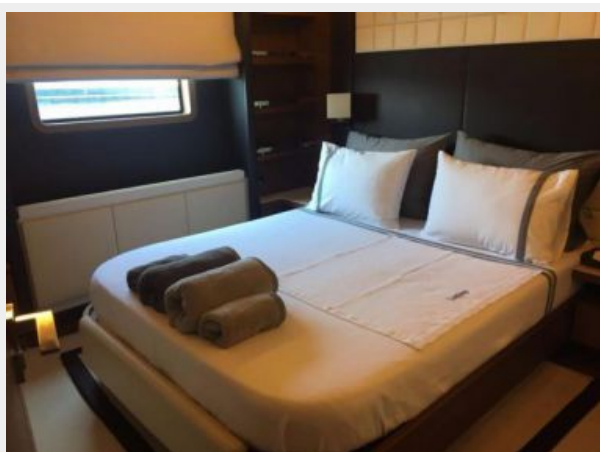
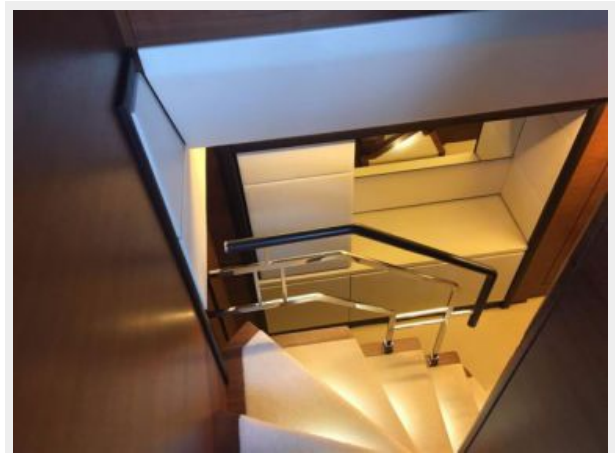
The Company offers the details of this vessel or yacht in good faith but cannot guarantee or warrant the accuracy of this information nor warrant the condition of the vessel. A buyer should instruct his representatives, agents, or his surveyors, to investigate such details as the buyer desires validated. This vessel or yacht is offered subject to prior sale, price change, or withdrawal without notice.

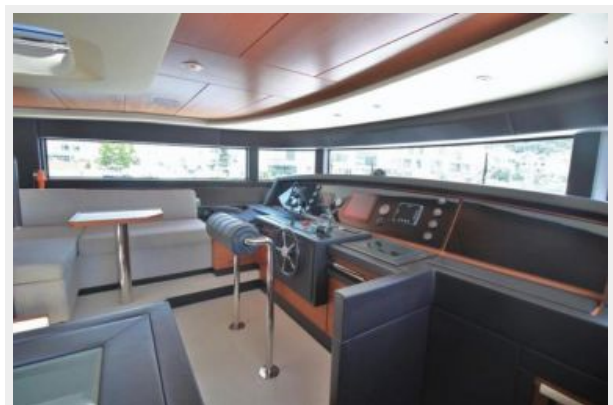
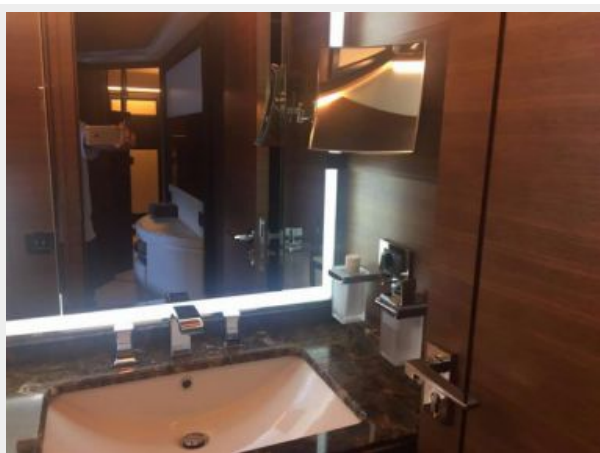
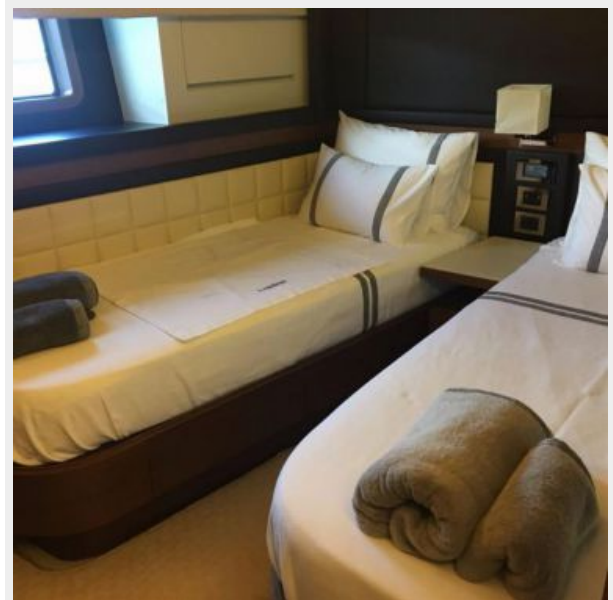
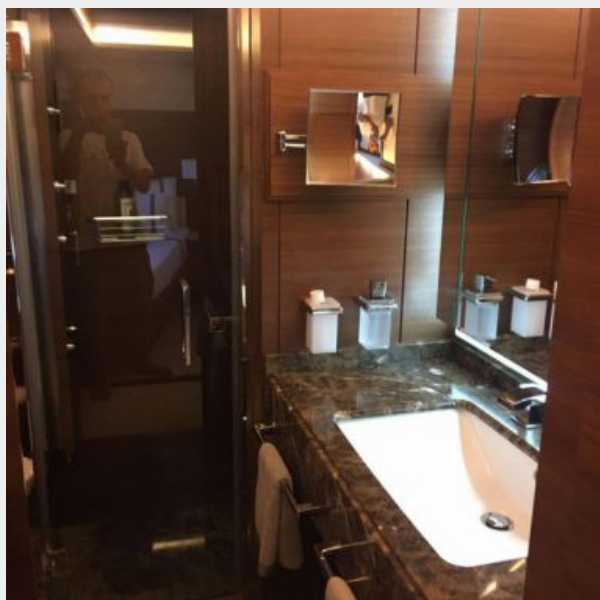
PHOTOS

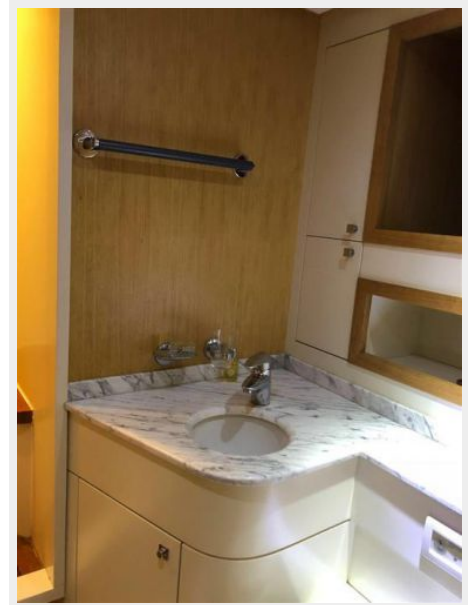
BENETTI SUNRISE (2)**BENETTI SUNRISE (3)****BENETTI SUNRISE (4)****BENETTI SUNRISE (5)****BENETTI SUNRISE (6)**

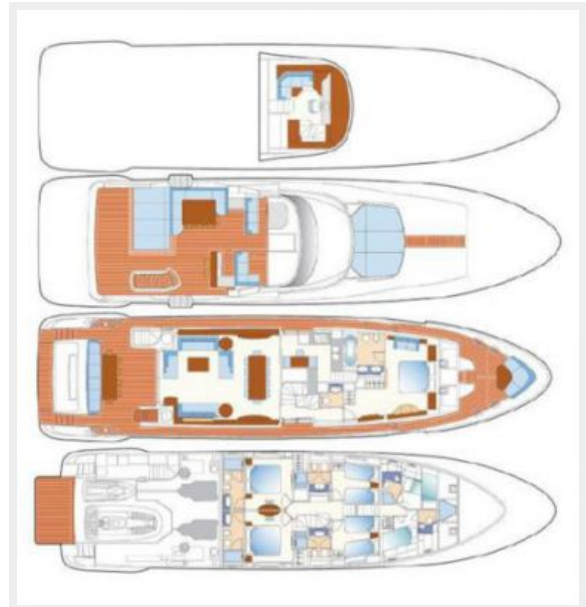
BENETTI SUNRISE (7)**BENETTI SUNRISE (8)****BENETTI SUNRISE (9)****BENETTI SUNRISE (10)****BENETTI SUNRISE (11)****BENETTI SUNRISE (12)**

BENETTI SUNRISE (13)**BENETTI SUNRISE (14)**









CONTACTS

Andrey Shestakov, leading yacht broker of the sales department of Shestakov Yacht Sales Inc. Shestakov Yacht Sales Inc., the official representative of the Miami/Fort Lauderdale FL headquarters.

Contact details

Email:
andrey@shestakovyachtsales.com

Web: shestakovyachtsales.com/en/

Telephones

USA: **+1(954)274-4435**

Office hours

Monday – Saturday: **9:00 - 21:00 EDT**

Sunday: **closed**

Address



Harbour Towne Marina, 850 NE 3rd St,
STE 213, Dania, FL 33004