

SUNRISE — BENETTI



Судостроитель: BENETTI

Год постройки: 2011

Модель: SHELBY

Цена: **ЦЕНА ЯХТЫ ПО ЗАПРОСУ**

Местонахождение: Turkey

Длина общая: 93' 0" (28.35m)

Ширина: 23' 0" (7.01m)

Макс. осадка: 7' 0" (2.13m)

Крейс. скорость: 13 Kts. (15 MPH)

Макс. скорость: 14 Kts. (16 MPH)

Купить **SUNRISE — BENETTI** а также выбрать подходящую вам яхту из нашего каталога яхт вам поможет опытный яхтенный брокер Андрей Шестаков. На сегодняшний день компания **Shestakov Yacht Sales Inc.** имеет большое количество яхт в **собственном списке продаж**, а также тесно сотрудничает со всеми крупными яхтенными производителями по всему миру.

Для того чтобы купить яхту **SUNRISE — BENETTI** а также проконсультироваться по любому вопросу связанному с покупкой, продажей, чартером яхт позвоните по телефону **+7(918)465-66-44**.

ОГЛАВЛЕНИЕ

ОГЛАВЛЕНИЕ	2
ХАРАКТЕРИСТИКИ	4
Обзор	4
Основная информация	5
Размеры	5
Скорость, вместимость и масса	5
Размещение	5
Корпус и палуба	6
Информация о двигателе	6
ПОДРОБНОЕ ОПИСАНИЕ	7
Features	7
Исключения	8
Отказ от ответственности	8
ФОТОГРАФИИ	9
BENETTI SUNRISE (2)	9
BENETTI SUNRISE (3)	9
BENETTI SUNRISE (4)	9
BENETTI SUNRISE (5)	9
BENETTI SUNRISE (6)	9
BENETTI SUNRISE (7)	10
BENETTI SUNRISE (8)	10
BENETTI SUNRISE (9)	10
BENETTI SUNRISE (10)	10
BENETTI SUNRISE (11)	10
BENETTI SUNRISE (12)	10
BENETTI SUNRISE (13)	11
BENETTI SUNRISE (14)	11
КОНТАКТЫ	16

Контактная информация	16
Телефоны	16
Время работы	16
Адрес	16

ХАРАКТЕРИСТИКИ

Обзор

Benetti Class Delfino 93 motor yacht is a 28.5 meters (93'6") vessel built by the Italian shipyard Benetti of the Azimut-Benetti Group. Delfino 93 motoryacht offers accommodation to up to 10 charter guests in 5 beautifully furnished suites, each with stunning en-suite bathroom. Her interior design is a reflection of professionalism by Carlo Galeazzi, with the exterior styling and concept by Stefano Righini.

Delfino 93 yacht is the first model in the Benetti Class line, reflecting the unmistakable Benetti experience and style. She represents a combination of aesthetically unique line with great comfort and state of the art technology.

For Benetti shipyard Delfino 93 motoryacht is closely linked with their history. The first motor yacht of this name was presented at the 1969 Genoa trade show. The Delfino 93' truly is one of a kind. Its compact dimensions enclose the design solutions, technical equipment and practical, comfortable spaces typical of larger yachts. This has been made possible thanks to the 7-meter wide midship section granting great comfort even at the lower deck, where two spacious VIP cabins and two guest cabins have been arranged.

Below deck there are two large VIP cabins and two guest cabins. The master cabin features a particularly large glass panel, despite the presence of a side passage. The internal areas have been designed by Carlo Galeazzi, obtaining a refined stylistic balance, characterized by an up-to-date contemporary décor. The light – natural and artificial – is also a design element, in particular the inclusion of large continuous tinted glass panels adds to the elegant comfortable atmosphere of the interior.

The exterior design style has been innovated by Stefano Righini and is marked by large, continuous windows that allow the ship owner and his guests to enjoy many different beautiful panoramic views over the sea. The interior decor has been designed by Galeazzi Studio and is available in two different versions: modern and classic style, with extremely elegant details and loose furniture.

Practicality and comfort are guaranteed in the wheelhouse too, whose interiors are designed as a shuttle with large vertical windows. The excellent visibility guaranteed at 180° makes Delfino a joy for the ship owner himself to steer.

KEY FEATURES

- She offers accommodation for up to 10 guests in 5 staterooms
- Zero speed fin stabilizers
- Full displacement hull for increased range of 1500nm and comfortable cruising at

13knots

- Jacuzzi on fly-bridge

Основная информация

Тип судна: SHELBY

Подкатегория: Моторная яхта

Модельный год: 2011

Год постройки: 2011

Страна: Turkey

Размеры

Длина общая: 93' 0" (28.35m)

Ширина: 23' 0" (7.01m)

Макс. осадка: 7' 0" (2.13m)

Скорость, вместимость и масса

Крейс. скорость: 13 Kts. (15 MPH)

Дальность на крейсерской скорости:
1500

Макс. скорость: 14 Kts. (16 MPH)

Чистый вес: 152 Pounds

Вместимость воды: 607.5957196 Gallons

Объем топливного бака: 4226.752832
Gallons

Размещение

Всего кают: 5

Всего коек: 7

Спальные места: 10

Койки экипажа: 3

Спальных мест экипажа: 3

Корпус и палуба

Материал корпуса: Composite

Информация о двигателе

Двигатели: 2

Производитель: MTU

Модель: MTU 8V2000M72

Тип двигателя: Inboard

Тип топлива: Diesel

ПОДРОБНОЕ ОПИСАНИЕ

Features

Benetti Class Delfino 93 motor yacht is a 28.5 meters (93'6") vessel built by the Italian shipyard Benetti of the Azimut-Benetti Group. Delfino 93 motoryacht offers accommodation to up to 10 charter guests in 5 beautifully furnished suites, each with stunning en-suite bathroom. Her interior design is a reflection of professionalism by Carlo Galeazzi, with the exterior styling and concept by Stefano Righini.

Delfino 93 yacht is the first model in the Benetti Class line, reflecting the unmistakable Benetti experience and style. She represents a combination of aesthetically unique line with great comfort and state of the art technology.

For Benetti shipyard Delfino 93 motoryacht is closely linked with their history. The first motor yacht of this name was presented at the 1969 Genoa trade show. The Delfino 93' truly is one of a kind. Its compact dimensions enclose the design solutions, technical equipment and practical, comfortable spaces typical of larger yachts. This has been made possible thanks to the 7-meter wide midship section granting great comfort even at the lower deck, where two spacious VIP cabins and two guest cabins have been arranged.

Below deck there are two large VIP cabins and two guest cabins. The master cabin features a particularly large glass panel, despite the presence of a side passage. The internal areas have been designed by Carlo Galeazzi, obtaining a refined stylistic balance, characterized by an up-to-date contemporary décor. The light – natural and artificial – is also a design element, in particular the inclusion of large continuous tinted glass panels adds to the elegant comfortable atmosphere of the interior.

The exterior design style has been innovated by Stefano Righini and is marked by large, continuous windows that allow the ship owner and his guests to enjoy many different beautiful panoramic views over the sea. The interior decor has been designed by Galeazzi Studio and is available in two different versions: modern and classic style, with extremely elegant details and loose furniture.

Practicality and comfort are guaranteed in the wheelhouse too, whose interiors are designed as a shuttle with large vertical windows. The excellent visibility guaranteed at 180° makes Delfino a joy for the ship owner himself to steer.

KEY FEATURES

- She offers accommodation for up to 10 guests in 5 staterooms
- Zero speed fin stabilizers
- Full displacement hull for increased range of 1500nm and comfortable cruising at 13knots
- Jacuzzi on fly-bridge

Исключения

При продаже яхты исключаются личные вещи владельца.

Отказ от ответственности

Компания предоставляет описание судна или яхты добросовестно, но не может гарантировать точность этой информации, а также не ручается за техническое состояние. Покупатель должен проинструктировать своих агентов или оценщиков исследовать представленную информацию более подробно, по собственному желанию. Продажа судна или яхты, изменение цены или снятие с продажи будет происходить без предварительного уведомления.

ФОТОГРАФИИ

BENETTI SUNRISE (2)



BENETTI SUNRISE (3)



BENETTI SUNRISE (4)



BENETTI SUNRISE (5)



BENETTI SUNRISE (6)



BENETTI SUNRISE (7)



BENETTI SUNRISE (8)



BENETTI SUNRISE (9)



BENETTI SUNRISE (10)



BENETTI SUNRISE (11)



BENETTI SUNRISE (12)

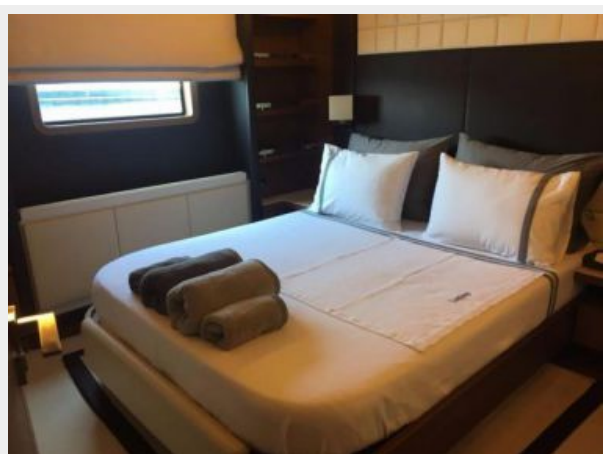
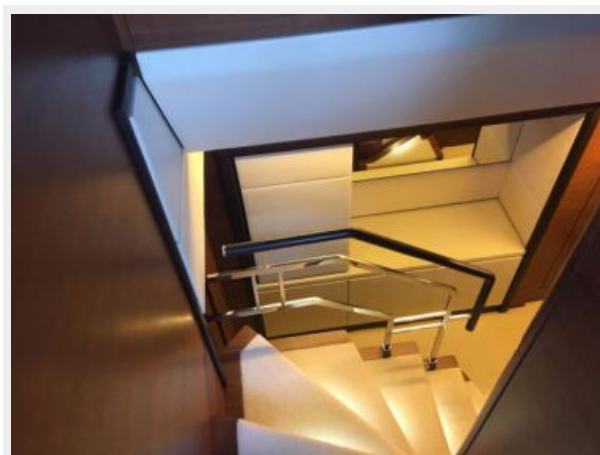


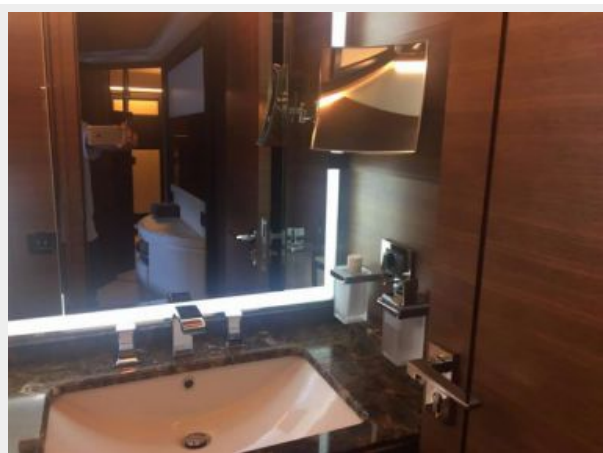
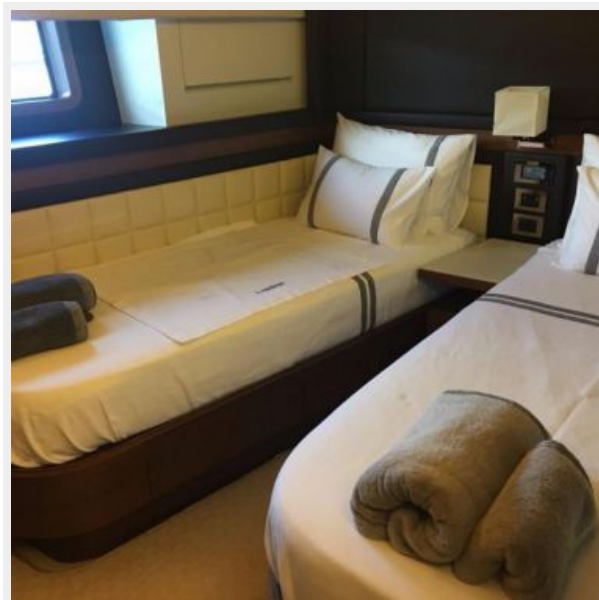
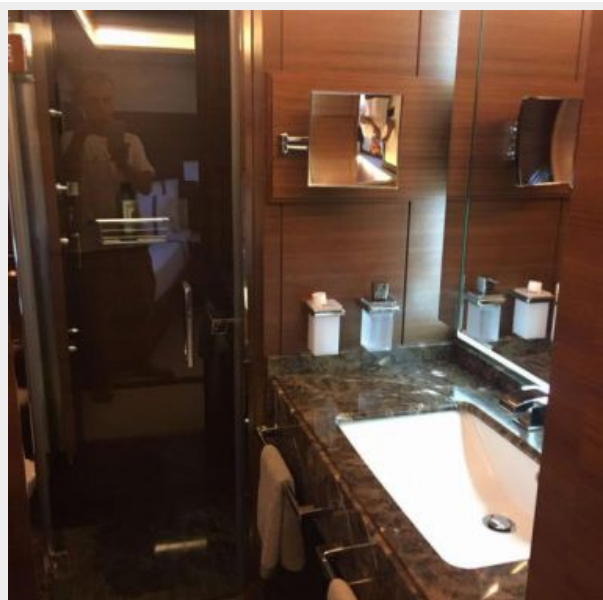
BENETTI SUNRISE (13)

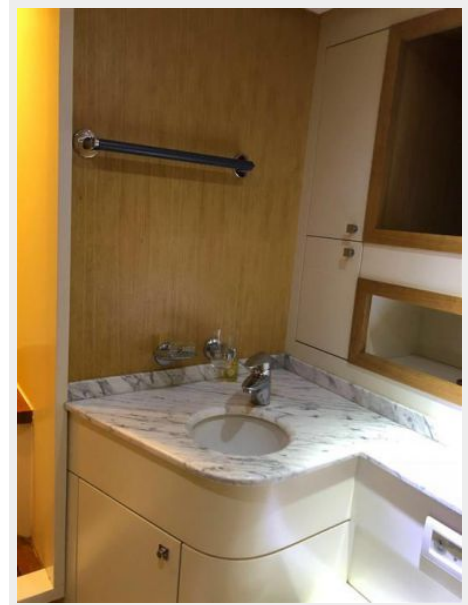


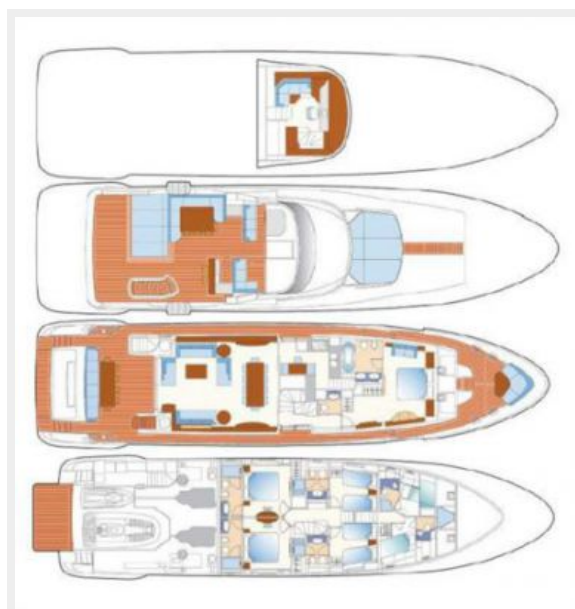
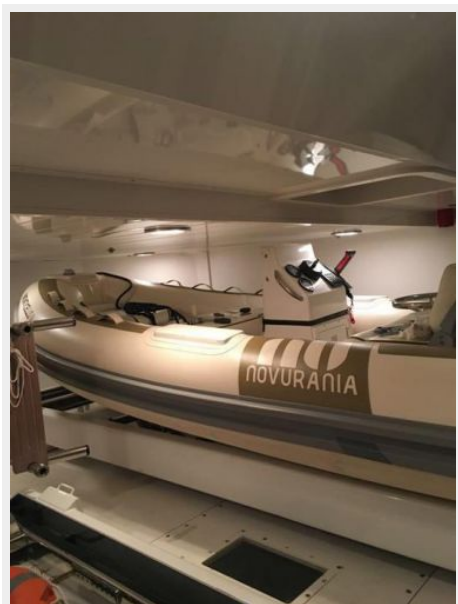
BENETTI SUNRISE (14)











КОНТАКТЫ

Андрей Шестаков (Andrey Shestakov) – ведущий яхтенный брокер отдела продаж яхт и судов компании Shestakov Yacht Sales Inc. Официальный представитель Shestakov Yacht Sales Inc. для русскоговорящих клиентов в центральном офисе компании в Майами/Форт Лодердейл/Флорида/США.

Контактная информация

Email: **andrey@shestakovyachtsales.com**

Web: shestakovyachtsales.com

Телефоны

Краснодарский край: **+7(918)465-66-44**

США, Майами, Флорида: **+1(954)274-4435**

Время работы

Понедельник – Суббота: **9:00 - 21:00**
EDT

Воскресенье: **Закрыто**

Адрес



Harbour Towne Marina, 850 NE 3rd St,
STE 213, Dania, FL 33004