

## JAZZ — BENETTI



**Судостроитель:** BENETTI

**Год постройки:** 2007

**Модель:** Моторная яхта

**Цена:** ЦЕНА ЯХТЫ ПО ЗАПРОСУ

**Местонахождение:** United States

**Длина общая:** 100' 0" (30.48m)

**Ширина:** 23' 5" (7.14m)

**Макс. осадка:** 6' 0" (1.83m)

**Крейс. скорость:** 12 Kts. (14 MPH)

**Макс. скорость:** 15 Kts. (17 MPH)

Купить **JAZZ — BENETTI** а также выбрать подходящую вам яхту из нашего каталога яхт вам поможет опытный яхтенный брокер Андрей Шестаков. На сегодняшний день компания **Shestakov Yacht Sales Inc.** имеет большое количество яхт в собственном списке продаж, а также тесно сотрудничает со всеми крупными яхтенными производителями по всему миру.

Для того чтобы купить яхту **JAZZ — BENETTI** а также проконсультироваться по любому вопросу связанному с покупкой, продажей, чартером яхт позвоните по телефону **+7(918)465-66-44**.

# ОГЛАВЛЕНИЕ

ОГЛАВЛЕНИЕ	2
ХАРАКТЕРИСТИКИ	5
Обзор	5
Основная информация	6
Размеры	6
Скорость, вместимость и масса	6
Размещение	7
Корпус и палуба	7
Информация о двигателе	7
ПОДРОБНОЕ ОПИСАНИЕ	8
Description	8
Summer Season 2019 Offer	9
Walk through and accomodations	9
Recent major works and upgrades	9
Main Engines/ Generators/ Auxiliary Systems	10
A/V Equipment	10
Electronics	11
Galley	11
Electrical Equipment	11
Exclusions	12
Исключения	12
Отказ от ответственности	12
ФОТОГРАФИИ	13
Port Bow	13
Under Way	13
Beach Club/ Swim Platform	13
Beach Club/Swim Platform	13
Under Water	13

Sun Beds	14
Sun Deck Sun Beds	14
Sun Deck Looking Forward/ Rain Shower Above	14
Sun Deck Lounge chairs/ Sun Beds	14
Upper Deck Cocktail/Seating Area and Dining for 8	14
Mezzanine Seating	14
Upper Deck Bar and Dining for 8	15
Upper Deck Bar and Stew Pantry	15
Upper Deck Lounge	15
Upper Deck Area Dining for 8	15
Upper Deck Lounge	15
Aft Deck with AI Fresco Dining	15
Aft Deck AI Fresco Dining	16
Main Salon Dining for 8	16
Main Salon looking from Aft Deck Entry Door	16
Master On Deck	16
Master En-Suite Shower and Double Sinks	16
Master En-suite Bathroom	16
VIP En-Suite Bathroom	17
VIP Cabin Aft	17
VIP En-Suite Bathroom	17
Twin Cabin Amid Ships	17
Twin Cabin En-Suite Bathroom	17
Twin Cabin Converted to Queen	17
Twin Cabin En-Suite Bathroom Shower	18
<b>КОНТАКТЫ</b>	<b>19</b>
Контактная информация	19
Телефоны	19
Время работы	19

---

Адрес

19

# ХАРАКТЕРИСТИКИ

## Обзор

MAJOR PRICE REDUCTION of \$300,000 on 09/22/2019

MY Jazz is a Benetti Tradition 100 which is considered one of the best Benetti designs in their 100 ft range created by Francois Zuretti and Stefano Righini. Her exterior and interior areas are unique and very guest friendly. Starting with the Sun Deck that includes sun beds and a rain shower, with the Mezzanine and its comfortable and relaxing seating a few steps lower, the Tri Deck style upper deck exterior dining with the well appointed cocktail/ lounge area, the Aft Deck for Al Fresco or formal dining, and finally her Beach Club/Hydraulic swim platform. Motoryacht Jazz provides 3 dining areas, 2 outdoor and one in the main salon. She accommodates 8 guests in 4 Owner/Guest Cabins. A Master on deck with 180 degree window views, the two Twin cabins that are convertible to Queens are amidships and a spacious VIP cabin is Aft with a separate staircase entry. The vessel is crewed permanently by a crew of 6 and constantly maintained and upgraded. She has minimal wear and tear and shows excellent. The interior refreshed and altered in December 2018 by replacing all the soft goods, draperies, panels and headboards at main and below deck cabins and common areas, and by adding a comfortable 8 person dining table and chairs with a new L Shape Sofa in the main Salon. MY Jazz machinery and systems are serviced up to date. She went through a major overhaul on her main engines and generators. Her reliable C-18's Main engines have only 1400hrs (01/31/2020) SMOH which was performed by Pantropic Caterpillar Authorized Dealer of Palm Beach. Stbd Generator overhaul was completed in Summer 2016 and at the same time the Port Generator went through the 2000 hr service. RPM Diesel in Fort Lauderdale performed the works. The Port Generator was overhauled in 2015. MY Jazz is permanently docked in Fort Lauderdale when she is not cruising the Islands of the Bahamas and the Caribbean and a Ceramic coating is applied annually to her superstructure and hull. This yacht is a must see for any demanding buyer that is considering a 100 ft Master on Deck Yacht build and kept to the highest standards. Her ABS Classification is up to date with no notices. And recently she undergoes the Cayman Islands commercial yacht inspection. MY JAZZ is a US duty paid and tax paid turn key yacht with a proven charter record that generates great income from charters. Upon request and serious interest the last year charter record can be provided.

## Основная информация

<b>Тип судна:</b> Моторная яхта	<b>Подкатегория:</b> Tri-Deck
<b>Модельный год:</b> 2007	<b>Год постройки:</b> 2007
<b>Год обновления:</b> 2016	<b>Вид обновления:</b> Engines and generator overhaul
<b>Страна:</b> United States	<b>Верх:</b> Enclosed P.H. W/Sundeck
<b>Открытая палуба мостика:</b> Да	

## Размеры

<b>Длина общая:</b> 100' 0" (30.48m)	<b>Ширина:</b> 23' 5" (7.14m)
<b>Макс. осадка:</b> 6' 0" (1.83m)	

## Скорость, вместимость и масса

<b>Крейс. скорость:</b> 12 Kts. (14 MPH)	<b>Крейсерская скорость поворота:</b> 2050 Kts.
<b>Дальность на крейсерской скорости:</b> 1500	<b>Макс. скорость:</b> 15 Kts. (17 MPH)
	<b>Макс. скорость поворота:</b> 2300 Kts.
<b>Водоизмещение:</b> 275000 Pounds	<b>Чистый вес:</b> 199 Pounds
<b>Вместимость воды:</b> 1160 Gallons	<b>Вместимость сточного бака:</b> 439 Gallons
<b>Объем топливного бака:</b> 5939 Gallons	<b>Расход топлива:</b> 60 Gallons

## Размещение

---

**Всего кают:** 4

**Всего коек:** 6

**Спальные места:** 8

**Всего ком. состава:** 5

**Каюты экипажа:** 3

**Койки экипажа:** 6

**Спальных мест экипажа:** 6

**Комм. состав экипажа:** 3

## Корпус и палуба

---

**Материал корпуса:** Fiberglass

**Материал палубы:** Teak over Fiberglass

**Комплектация корпуса:** Full Displacement

**Отделка корпуса:** Fiberglass

**Дизайнер экстерьера:** Francois Zuretti and Stefano Righini

**Дизайнер интерьера:** Francois Zuretti and Stefano Righini

## Информация о двигателе

---

**Двигатели:** 2

**Производитель:** Caterpillar

**Модель:** C18

**Тип двигателя:** Inboard

**Тип топлива:** Diesel

# ПОДРОБНОЕ ОПИСАНИЕ

## Description

Jazz is a sophisticated Tradition Series 100' motor yacht, built by luxury Italian super yacht builder Benetti and designed and styled by Francois Zuretti and Stefano Righini.

This 2007 tri-deck Benetti features expansive deck spaces for al fresco dining on two decks and comfortable lounging in the sun, as well as a sophisticated, elegant interior and exterior. With a complete professional interior redesign and refit in December of 2018, no expense has been spared to keep her in the finest condition and very up to date. All furniture and soft goods were replaced, plus new televisions, linens, china, crystal and many other items, designed and chosen by a professional, talented interior design agency.

Jazz has well-appointed accommodations for eight in four staterooms. Her master on-deck stateroom, offers 180 degree views and privacy. The VIP is full beam and is accessed from a private stairway. The two other staterooms are convertible to both a two twin bed setup and a queen bed setup for the ultimate guest comfort.

Jazz is maintained to the highest standards with a full-time crew of six. She is permanently docked at an under cover marina in Fort Lauderdale, Florida, when she is not cruising.

Her ABS Classification is up to date with no notices. Recently Jazz has undergone the Cayman Islands Commercial Yacht Inspection. She is a US duty and tax paid turn-key yacht with a proven and profitable charter record. Upon serious interest and request, last year's charter records can be provided.

- Professionally redesigned and refitted in late 2018 with custom high-quality decor, creating an elegant and comfortable atmosphere
- Impressive open and airy spaces
- Accommodates eight guests in four staterooms
- Equipped with state of the art technology in all guestrooms and entertaining areas
- At Rest/ Zero Speed Stabilizers for the ultimate in comfort
- Updated crew quarters

Jazz's machinery and systems are serviced and up to date. She underwent a major overhaul on her main engines and generators. Her reliable C-18's Main engines have only 1800 hrs SMOH which was performed by Pantropic Caterpillar Authorized Dealer of Palm Beach.

The Stbd Generator was overhauled in Summer 2016 and at the same time the Port Generator underwent the 2000 hr service. RPM Diesel in Fort Lauderdale performed the work. The Port Generator overhaul was completed in 2015. Jazz is a must see for any demanding buyer that is considering a 100 ft Master on Deck motor yacht.



---

## Summer Season 2019 Offer

---

**"Charter before you Purchase"** (if desired) on a discounted rate to the potential new Owner, that will review the vessel at its location in the Mediterranean and make an accepted offer. The charter fee will be deducted from the purchasing price on closing. In addition due to the location and if requested the owner is willing to offer his crew of 6 from the time of closing till the vessel is shipped back to the USA, or from closing till the end of September which ever occurs first.

Vessel will be available for showings from the end of May and at the following countries:

Montenegro, Croatia, Greece, Italy and France

---

## Walk through and accomodations

---

Entering the vessel from her port or stbd side boarding ladders or coming on board via her aft Passarelle you proceed to the Aft Deck area. Coming through the Salon automatic sliding door you will find at the Aft Port side of the Salon the L Shape Sofa and at the Stbd side the staircase that takes you to the Aft VIP Cabin. Further forward of the L shaped sofa is the dining table and dining chairs for 8 guests. At the Port side forward of the Salon is the automatic door that takes you to the Galley/ Stewardess pantry, and at the STBD side you enter the Hallway to the stairs to the Wheelhouse Bridge, the stairs to the two Twin/Queen Cabins and further Forward to the Day Head. Passing the Day Head is the entrance to the Master On Deck Cabin. Heading up to the bridge you will find the large and well appointed Wheelhouse Bridge, and to the aft of the Bridge are the stairs to the upper deck Bar/Stewardess Pantry, and the upper deck Dining area. Walking to the sides of the upper deck you will find the 2 staircases leading to the Mezzanine seating and view area and just a few steps aft of the Mezzanine is the Sun Deck. Access to the Upper Deck is also by the well sized staircase coming from the Aft Deck. The Full Walk Around decks are very comfortable and "courtesy of" the large 23 feet 5 inches beam of the yacht. And when the Garage Hydraulic Door opens to become a Swim Platform and Beach Club, the access stairs are located at the Port side aft, (opening automatically).

---

## Recent major works and upgrades

---

2018: New Main engine services and Aftercoolers replacement with new December 2018 Steering system rebuild in December 2018 Complete Ceramic Coat Application - August 2018 Full service at A-SEA converters May 2018 Replacement of Gyro compass May 2018 New CO2 sensors in machinery August 2018 Annual ABS survey and Classification renewal October 2018 Interior upgrades and alterations (Cost of 150,000, October 2018): New soft goods main and lower deck, New draperies and paneling at upper and lower deck, New Dining table and Dining chairs, New salon sofa and Arm chairs, New coffee tables with storage in Salon.c. 2017: 10 Year ABS Survey completed - October 2017 Re insulated Master and VIP air handler water piping - Sept 2017 New PH Carpet - October 2017 New Bottom Paint (Full Hull Sanding) - October 2017 Hull and Superstructure Completely Waxed - October 2017 Teak Decks Sanded and Sealed -

October 2017 2016: Both main engines rebuilt - June 2016 Starboard Generator rebuilt - June 2016 Page 4 of 13 Port Generator 2000 Hour Service - June 2016 New Bridge Deck Teak Dining Table - June 2016 All New exterior cushion covers by Wycap - June 2016 Replaced ships monitor - June 2016 New Marquip Boarding Ladder - June 2016 2 New custom umbrellas - July 2016 Both Maxwell windlass gear boxed replaced - July 2016 Water Maker serviced - July 2016 Updated Nobeltec Charts - July 2016 Replaced Bridge Helm Controller - July 2016 Swim Platform/ Beach Locking Pins-System completely serviced - July 2016 New VIP carpet - July 2016 Alpha Laval complete service - July 2016 Naiad - Stabilizers major service - Aug 2016 All new TV's and controls for all guest staterooms - Sept 2016 (cost of \$20,860) Added V-Sat (internet) - Sept 2016 (cost of \$60,000)

## Main Engines/ Generators/ Auxiliary Systems

Main Engines: 2 x Caterpillar C18 1000hp@2300RPM engines with 1860 hrs SMOH. The main engines were rebuilt by Pantropic Power of Palm Beach in June 2016 at a cost of \$141,043. 2 x Reduction Gears ZF model ZFW2700 Serviced in November 2018 Generators: 2 x Kohler Generators Stbd was rebuilt in 2016 by RPM Diesel at a cost of \$39,545. Port Generator - 2000 Hour was performed by RPM Diesel at a cost of \$16,837. Port Generator was rebuilt in 2015 Hydraulics/ Auxiliary Machinery/Other Systems/Running Gear: 2 Fixed Pitch five blade propellers. Glendenning Engine controls with plug in remote exterior Docking station with Bowthruster. Alfa Laval fuel separator MIB 303. 50HP Naiad Hydraulic Bowthruster. Stabilizers: Naiad 420 At Rest/Zero speed/ Active Fin Stabilizers. Steering system with Emergency steering station in Garage. Rebuild in December 2018 Watermaker: Idromar MCS8 1.450 GPD/ 5,500 LPD with Sand Filler with Ultra-Violet water sterilization unit. 2 x Gianneschi GR90 Freshwater pumps with 3 stage filter and UV sterilizer. Hamman fully automatic sewage treatment system. Allen Bradley Digital multistation boat management system (alarms, bilges. tank levels. electrical system) with viewing screens at Pilothouse, Engine Room and Crew Mess Air-conditioning: Condaria 4 compressor Chiller system with 3 x Heat pumps. Condaria Chiller Organizer. Gianneschi & Rammacciotti Engine Room ventilation controls 2 x F I.M.M. Synchronous 3 Phase 55kW bilge pumps for garage Emergency bilge and fire pumps: Gianneschi & Rammacciotti 4kW 3 Phase ACM402BTI pump for man bilge manifolds. Gianneschi & Rammacciotti 4kW 3 Phase ACM402BTT pump for fire hose. Gianneschi & Rammacciotti PQ 40T 1.5kW 3 Phase clean lube oil pump. Gianneschi & Rammacciotti PQ 40T 1.5kW 3 Phase dirty lube oil pump. 2 x Gianneschi & Rammacciotti NM11Be 1.5kW 3 Phase A/C circulation pumps. 2x Maxwell 4500 pds Vertical Anchor Windlasses. 2 x Maxwell Capstans at the Aft Deck. 1 x Motomar Hydraulic Davit 600 KG/1300pds located in the Garage. Boarding: Gangway Marquip Stairs Aluminum. Motomar Hydraulic Passarelle Stainless steel with Teak.

## A/V Equipment

LG TV WITH YAMAHA BLURAY PLAYER IN UPPER PANTRY DVD SAMSUNG TV ON POWERED LIFT, RUNCO TV, YAMAHA BLURAY, WII, APPLE TV IN SALON DVD SONY TV ON POWERED LIFT, YAMAHA BLURAY, APPLE TV IN MASTER STATEROOM DVD SONY

TV, YAMAHA BLURAY, APPLE TV IN VIP STATEROOM DVD SAMSUNG TV, YAMAHA BLURAY, APPLE TV IN PORT GUEST CABIN DVD SAMSUNG TV, SONY BLURAY, APPLE TV IN STARBOARD GUEST CABIN SATELITE TV BY SEATEL YAMAHA CD/CHANGER & YAMAHA A/V RECEIVER, UPPER PANTRY & SALON YAMAHA A/V RECEIVERS IN MASTER & ALL GUEST STATEROOMS SONOS SYSTEM THROUGHOUT VESSEL ALPINE AM/FM/CD IN GALLEY SONY CD/TUNERS IN PORT CREW AND CAPTAINS CABIN IPAD CONTOLS IN ALL STATEROOMS & CABINS SAMSUNG TV W/APPLE TV IN CREW MESS + SAMSUNG MONITOR FOR CCTV

## Electronics

PILOT HOUSE: COMPASS: SPERRY 10" MAGNETIC & GYRO Repeater. AUTOPILOT: SPERRY NAVIPILOT V RADAR: FURUNO 64 MILE AIS: FURUNO FA-150 2 x SAILOR" EPIRB BATTERY GPS.: FURUNO GP-33 GPS: FURUNO NAVNET CHART PLOTTER: IN NAVNET GPS CHART PLOTTER: NOBELTEC MONITORS: TWO x HATTELAND DISPLAYS FIRSTMATE MONITOR IN CREWMESS VHF: SAILOR C4900 VHF: SAILOR RT5022 HANDHELD VHF'S: SAILOR GMDSS & ICOM SSB: SAILOR HC-4500B MF/HF BNWAS: FURUNO BR-510 BNWAS IN STARBOARD CREW CABIN CELL PHONE PANSONIC HYBRID SYSTEM SIMRAD ISDN HANDSET SAT. PH/INTERNET: SEATEL V-SAT PEPWAVE 4G FISHFINDER: IN NAVNET GPS DEPTH FINDER: IN NAVNET GPS SPEED LOG: IN GPS'S & FURUNO RD33 WIND METER: TWO x FURUNO FI-30 COMPUTER: STEALTH W/NOBELTEC SOFTWARE NAVTEX: FURUNO NX-700 FAX, PRINTER, ETC. HP ENVY ALL IN ONE SAILOR TT-3606E INMARSAT C TERMINAL ALLEN-BRADLEY PANELVIEW PLUS MONITOR & VESSEL MANAGEMENT PANASONIC CCTV SYSTEM W/FOUR CAMERAS & TWO x SAMSUNG MONITORS

## Galley

Marble counter tops Penguin custom built commercial double fridge 2 x Miele fridge/freezer drawers Miele Ceran electric 4 burner ceramic cooktop Miele built in convection oven Miele Optima high-speed dishwasher Stainless steel double sink with garbage macerator Miele microwave oven Whirlpool microwave oven 2 x Miele Softronic tumble dryers Miele Softronic frontload washing machine Indel 8 minibar in crew mess area Hoshizaki icemaker in bar Frigonautica mini fridge in bar

## Electrical Equipment

12 VOLT CHARGER 10 AMP MASTERVOLT. 12 VOLT CHARGER 50 AMP MASTERVOLT. 24 VOLT CHARGER 75 AMP MASTERVOLT. 24 VOLT CHARGER 50 AMP MASTERVOLT. 24 VOLT CHARGER 25 AMP MASTERVOLT. 24 VOLT CHARGERS TWO x 20 AMP MASTERVOLT. DC CONVERTER SHORE POWER CONVERTERS: 2 x 45 KVA, 220 VOLT "A/SEA" BATTERY INSTALLATION 6 x 8D 12 VOLT, STARBOARD AFT IN ENGINE ROOM

BATTERY INSTALLATION 2 x 8D 12 VOLT, BELOW PORT GENERATOR BATTERY  
INSTALLATION 2 x 12 VOLT IN VOID SPACE FORWARD OF PANTRY TV BATTERY  
INSTALLATION 1 x 12 VOLT, IN GARAGE BATTERY SWITCHES FOUR, APPROVED TYPE  
LIGHTS 24 VOLT DC & 220VOLT AC. 125 VOLT SHORE RECEPTACLES FOUR ON UPPER  
DECK FOR PORTABLE HEATERS 220 VOLT SHORE RECEPTACLES TWO (ONE ON  
POWERED REEL) 100 AMP CABLES TWO x 75' x 125/250 VOLT W/ONE ON POWER REEL  
PLUS ONE 30' SPARE "PIG" TALES VARIOUS FOR CONNECTING IN VARIOUS  
LOCATIONS

---

## Exclusions

---

Intrepid 32 2014 Fishing Gear Towline and Bridle Yamaha JetSki 2 Seabobs Go Pro and Drone  
2 Murano Sculptures All Bernardaud China Owners Personal Effects

---

## Исключения

---

При продаже яхты исключаются личные вещи владельца.

---

## Отказ от ответственности

---

Компания предоставляет описание судна или яхты добросовестно, но не может  
гарантировать точность этой информации, а также не ручается за техническое  
состояние. Покупатель должен проинструктировать своих агентов или оценщиков  
исследовать представленную информацию более подробно, по собственному желанию.  
Продажа судна или яхты, изменение цены или снятие с продажи будет происходить без  
предварительного уведомления.

# ФОТОГРАФИИ

**Under Way**



**Port Bow**



**Beach Club/ Swim Platform**



**Beach Club/Swim Platform**



**Under Water**





**Sun Deck Sun Beds**



**Sun Beds**



**Sun Deck Lounge chairs/ Sun Beds**



**Sun Deck Looking Forward/ Rain Shower Above**



**Mezzanine Seating**



**Upper Deck Cocktail/Seating Area and Dining for 8**



**Upper Deck Bar and Dining for 8**



**Upper Deck Bar and Stew Pantry**



**Upper Deck Area Dining for 8**



**Upper Deck Lounge**



**Upper Deck Lounge**



**Aft Deck with AI Fresco Dining**





**Aft Deck Al Fresco Dining**



**Main Salon Dining for 8**



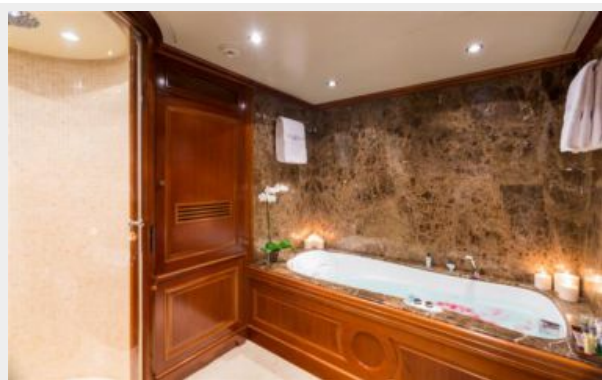
**Main Salon looking from Aft Deck Entry Door**



**Master On Deck**



**Master En-suite Bathroom**



**Master En-Suite Shower and Double Sinks**





**VIP Cabin Aft**



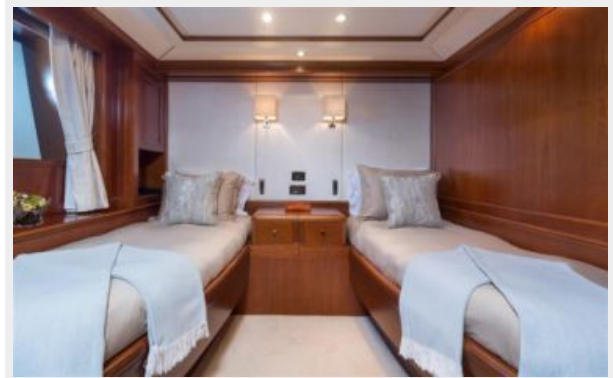
**VIP En-Suite Bathroom**



**VIP En-Suite Bathroom**



**Twin Cabin Amid Ships**



**Twin Cabin Converted to Queen**



**Twin Cabin En-Suite Bathroom**



## Twin Cabin En-Suite Bathroom Shower



# КОНТАКТЫ

---

Андрей Шестаков (Andrey Shestakov) – ведущий яхтенный брокер отдела продаж яхт и судов компании Shestakov Yacht Sales Inc. Официальный представитель Shestakov Yacht Sales Inc. для русскоговорящих клиентов в центральном офисе компании в Майами/Форт Лодердейл/Флорида/США.

## Контактная информация

---

Email: [andrey@shestakovyachtsales.com](mailto:andrey@shestakovyachtsales.com)

Web: [shestakovyachtsales.com](http://shestakovyachtsales.com)

## Телефоны

---

Краснодарский край: **+7(918)465-66-44**

США, Майами, Флорида: **+1(954)274-4435**

## Время работы

---

Понедельник – Суббота: **9:00 - 21:00**  
EDT

Воскресенье: **Закрито**

## Адрес

---



Harbour Towne Marina, 850 NE 3rd St,  
STE 213, Dania, FL 33004