

WHITE DOVE — CATALINA



Builder: CATALINA

Year Built: 1991

Model: Cruising Sailboat

Price: PRICE ON APPLICATION

Location: United States

LOA: 28' 0" (8.53m)

Beam: 10' 4" (3.15m)

Min Draft: 3' 10" (1.17m)

Max Draft: 3' 10" (1.17m)

Our experienced yacht broker, Andrey Shestakov, will help you choose and buy a yacht that best suits your needs **White Dove — CATALINA** from our catalogue. Presently, at Shestakov Yacht Sales Inc., we have a wide variety of yachts available on our sale's list. We also work in close contact with all the big yacht manufacturers from all over the world.

If you would like to buy a yacht **White Dove — CATALINA** or would like help answering any questions concerning purchasing, selling or chartering a yacht, please call **+1(954)274-4435**

TABLE OF CONTENTS

TABLE OF CONTENTS	2
SPECIFICATIONS	3
Overview	3
Basic Information	4
Dimensions	4
Speed, Capacities and Weight	4
Accommodations	4
Hull and Deck Information	5
Engine Information	5
DETAILED INFORMATION	6
Features	6
Exclusions	6
Disclaimer	6
PHOTOS	7
CONTACTS	17
Contact details	17
Telephones	17
Office hours	17
Address	17

SPECIFICATIONS

Overview

Price Just Reduced - Owner Very Motivated !

Bottom Paint Job 1 Year Ago

Engine and transmission rebuilt 3 years ago This is a wonderful entry-level boat for a couple or small family, looking for a fun and easy to sail cruiser. A popular coastal cruiser, this original Catalina 28' model features a high-volume interior, with more room than many 32-foot boats, excellent headroom. A spacious cruiser, she sleeps six in two doubles and two singles and is an excellent value for this much boat. The brilliant design makes her good for Club racing or cruising. She is easy to handle for single sailing with all lines led aft to the cockpit, roller furling jib. Sail under 45' fixed bridges and across Okeechobee Waterway with this sloop's 41' 1" bridge clearance! There is a walk-thru transom with swim ladder for fun in the water, easy dinghy access, and with hot and cold cockpit shower. The interior layout is spacious and comfortable for friends and family. The salon has twin settees surrounding large folding table. Galley

- Hillerange Stove Top and Oven
- S/S Sink
- Hot and Cold Pressure Water
- Atwood 6 gal. water heater
- Ice Box - 2.9 cu ft.
- Dry Storage

Electronics

- Garmin 128 Chartplotter
- Navico Wheel Autopilot
- VHF radio
- Optimus AM/FM Stereo
- Danforth Compass - Needs Work

Electrical

- Equipped with 12v DC and 110v AC systems. Breaker panel at Nav table - 1 group 24 and 1 group 27 battery.

Deck

- Recessed anchor locker forward with single bow roller.
- Edson pedestal w/ 32" wheel
- Walk-thru transom
- Swim Platform with Swim Ladder
- Cockpit Shower with hot and cold pressurized water
- Cockpit Cushions with raised helm seat (1 cushion missing)
- USCG Safety Package

Sails and Equipment

- Battened Main
- Dutchman flaking system
- (2) Lewmar primary winches
- (2) Lewmar halyard winches
- Roller Furling Jib
- Boom vang
- Garhauer cabin top traveler system

Basic Information

Category: Cruising Sailboat

Model Year: 1991

Year Built: 1991

Country: United States

Dimensions

LOA: 28' 0" (8.53m)

LWL: 23' 10" (7.26m)

Beam: 10' 4" (3.15m)

Min Draft: 3' 10" (1.17m)

Max Draft: 3' 10" (1.17m)

Clearance: 41' 1" (12.52m)

Speed, Capacities and Weight

Displacement: 8300 Pounds

Water Capacity: 49 Gallons

Holding Tank: 18 Gallons

Fuel Capacity: 19 Gallons

Accommodations

Total Cabins: 1

Total Berths: 8

Total Heads: 1

Hull and Deck Information

Hull Material: Fiberglass

Hull Configuration: Monohull

Hull Designer: Gerry Douglas

Engine Information

Engines: 1

Manufacturer: Universal

Model: M-25XP

Engine Type: Inboard

Fuel Type: Diesel

DETAILED INFORMATION

Features

The Catalina 28 MarkII incorporates the best modern features with Catalina's classic styling. This careful blend of innovation and traditional values ensure the Catalina 28 MkII will pass the test of time. Notable features of the deck are the walk-through transom, stern boarding platform, and easy access forward on the wide unobstructed weather decks. The ergonomically correct cockpit seats and coamings reflect an understanding of the importance of the cockpit to the comfort of the crew. Roomy, functional cockpits are a Catalina hallmark. The sail controls, including the single-line reefing system, all lead to the security of the cockpit. The rig is masthead with double spreaders and fore and aft lower shrouds permitting powerful headsails and narrow sheeting angles for good windward performance. The interior is spacious and comfortable. The galley and head are aft for convenience to the cockpit. Special attention has been given to the traffic patterns, ventilation, storage and privacy. The new galley features molded countertops and increased storage. The headroom is generous and all berths are extra long, uncommon but welcome features in a 28-footer.

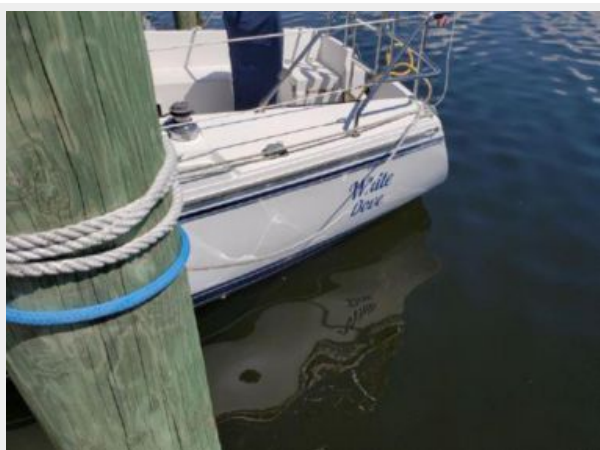
Exclusions

Owner's personal belongings.

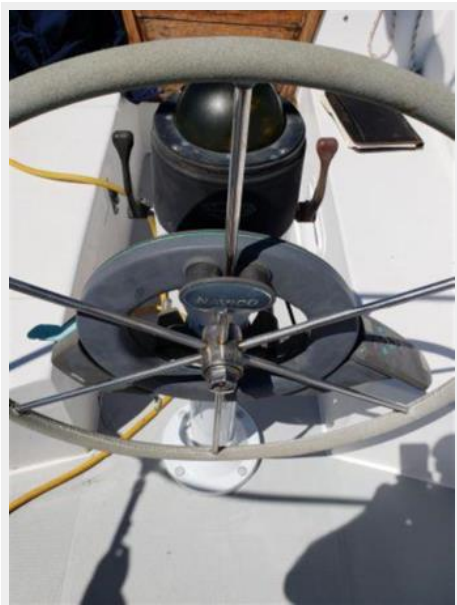
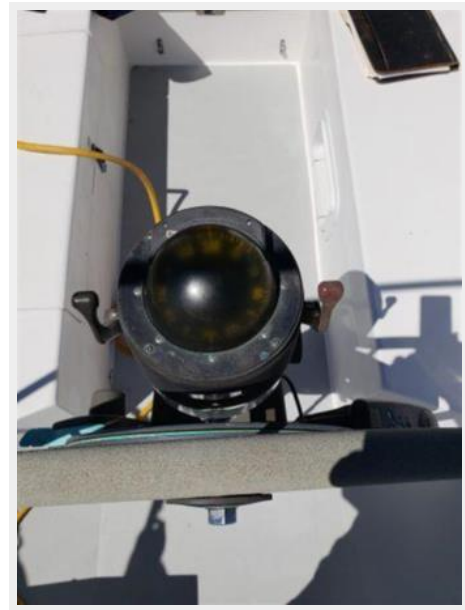
Disclaimer

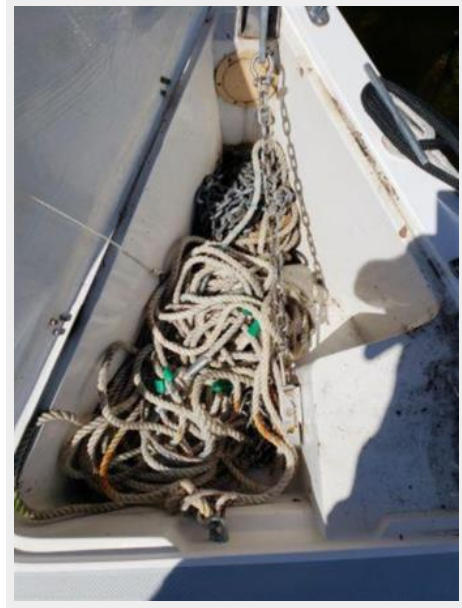
The Company offers the details of this vessel or yacht in good faith but cannot guarantee or warrant the accuracy of this information nor warrant the condition of the vessel. A buyer should instruct his representatives, agents, or his surveyors, to investigate such details as the buyer desires validated. This vessel or yacht is offered subject to prior sale, price change, or withdrawal without notice.

PHOTOS

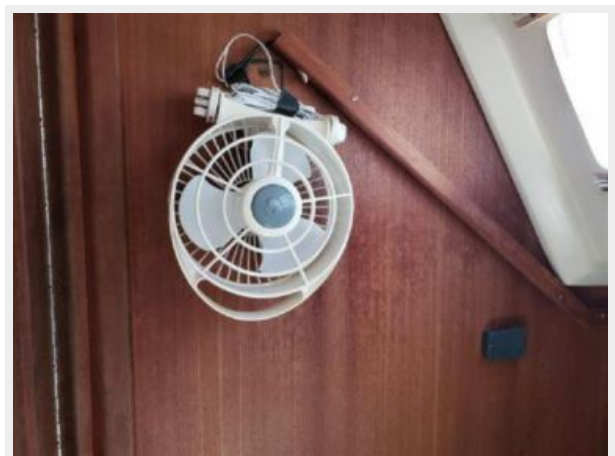


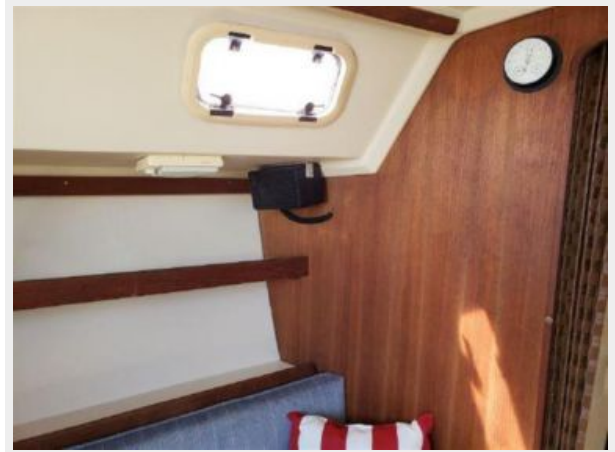






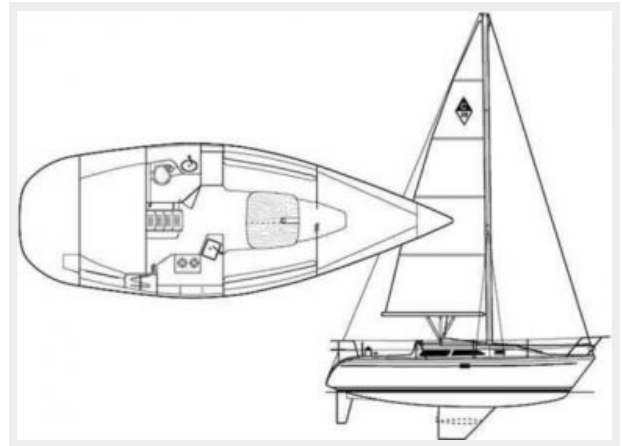












CONTACTS

Andrey Shestakov, leading yacht broker of the sales department of Shestakov Yacht Sales Inc. Shestakov Yacht Sales Inc., the official representative of the Miami/Fort Lauderdale FL headquarters.

Contact details

Email: andrey@shestakovyachtsales.com

Web: shestakovyachtsales.com/en/

Telephones

USA: +1(954)274-4435

Office hours

Monday – Saturday: **9:00 - 21:00** EDT

Sunday: **closed**

Address



Harbour Towne Marina, 850 NE 3rd St,
STE 213, Dania, FL 33004