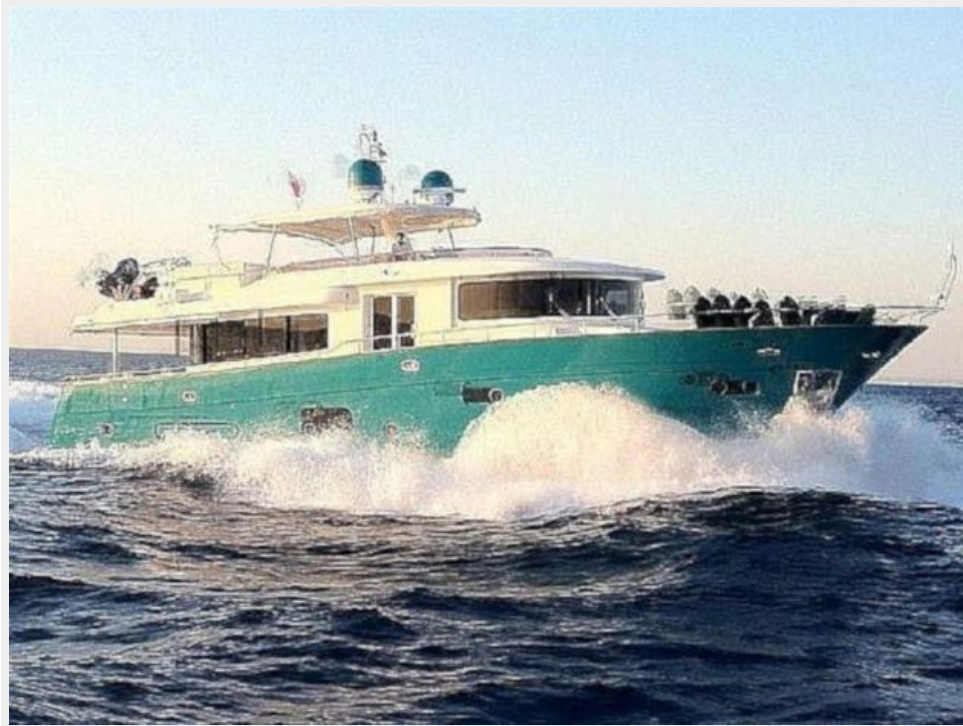


SANGRIA — APREAMARE



Builder: APREAMARE

Year Built: 2012

Model: SHELBY

Price: PRICE ON APPLICATION

Location: Turkey

LOA: 79' 3" (24.15m)

Beam: 21' 11" (6.68m)

Min Draft: 0' 0" (0.00m)

Max Draft: 6' 11" (2.11m)

Cruise Speed: 25 Kts. (29 MPH)

Max Speed: 29 Kts. (33 MPH)

Our experienced yacht broker, Andrey Shestakov, will help you choose and buy a yacht that best suits your needs **SANGRIA — APREAMARE** from our catalogue. Presently, at Shestakov Yacht Sales Inc., we have a wide variety of yachts available on our sale's list. We also work in close contact with all the big yacht manufacturers from all over the world.

If you would like to buy a yacht **SANGRIA — APREAMARE** or would like help answering any questions concerning purchasing, selling or chartering a yacht, please call **+1(954)274-4435**

TABLE OF CONTENTS

TABLE OF CONTENTS	2
SPECIFICATIONS	3
Overview	3
Basic Information	3
Dimensions	3
Speed, Capacities and Weight	4
Accommodations	4
Hull and Deck Information	4
Engine Information	4
PHOTOS	5
APREAMARE SANGRIA (2)	5
CONTACTS	8
Contact details	8
Telephones	8
Office hours	8
Address	8

SPECIFICATIONS

Overview

SANGRIA motor yacht was delivered in 2012 as the flagship of the Apremare's Maestro 82' series and has been used only privately by her one owner since new. Her interior offers huge volumes and is bright and open, with retractable windows in the main salon. The Apremare Maestro 82 is styled throughout in a restful palette of neutral colours and accommodates 8 guests in 4 staterooms consisting of a master suite, VIP suite and 2 double staterooms, all with en-suite bathroom facilities. Outside, the spacious aft deck is set up for al fresco entertainment and dining with a wooden table and chairs.

SANGRIA range sees modern and innovative materials and technologies perfectly blend with the themes and classical forms of the oldest maritime culture. She is a true example of aesthetic elegance but also comfort and seaworthiness. She is equipped with an ultra-modern stabilization system which reduces roll motion effect and results in a smoother more enjoyable cruising experience underway.

Basic Information

Category: SHELBY

Sub Category: Motor Yacht

Model Year: 2012

Year Built: 2012

Country: Turkey

Fly Bridge: Yes

Cockpit: Yes

Dimensions

LOA: 79' 3" (24.15m)

LWL: 0' 0" (0.00m)

LOD: 0' 0" (0.00m)

Beam: 21' 11" (6.68m)

Min Draft: 0' 0" (0.00m)

Max Draft: 6' 11" (2.11m)

Clearance: 0' 0" (0.00m)

MFG Length: 0' 0" (0.00m)

Speed, Capacities and Weight

Cruise Speed: 25 Kts. (29 MPH)

Max Speed: 29 Kts. (33 MPH)

Accommodations

Total Cabins: 4

Total Berths: 5

Sleeps: 8

Hull and Deck Information

Hull Material: GRP

Engine Information

Engines: 2

Manufacturer: MTU

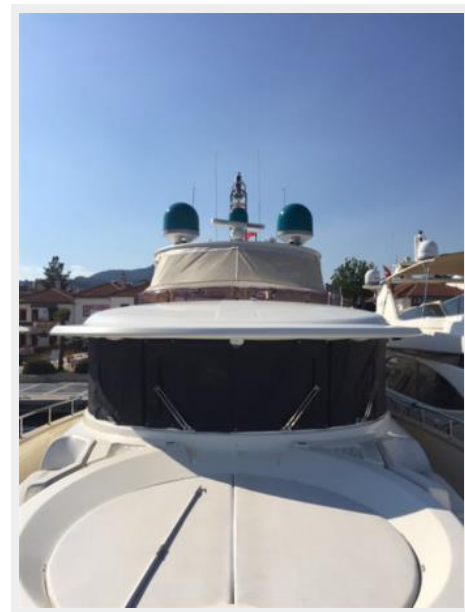
Model: 16V 2000 M93

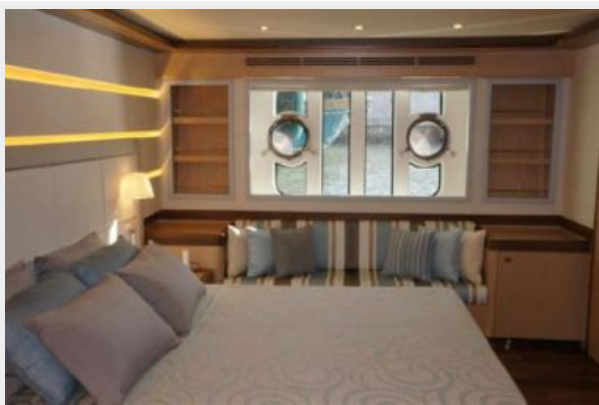
Engine Type: Inboard

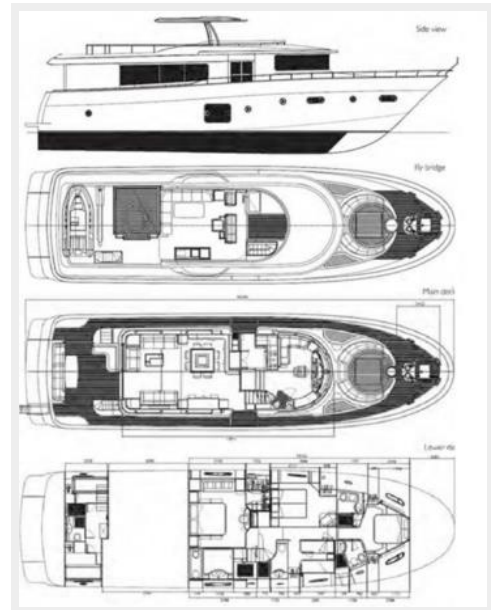
Fuel Type: Diesel

PHOTOS

APREAMARE SANGRIA (2)







CONTACTS

Andrey Shestakov, leading yacht broker of the sales department of Shestakov Yacht Sales Inc. Shestakov Yacht Sales Inc., the official representative of the Miami/Fort Lauderdale FL headquarters.

Contact details

Email: andrey@shestakovyachtsales.com

Web: shestakovyachtsales.com/en/

Telephones

USA: +1(954)274-4435

Office hours

Monday – Saturday: **9:00 - 21:00** EDT

Sunday: **closed**

Address



Harbour Towne Marina, 850 NE 3rd St,
STE 213, Dania, FL 33004