

ADELA — PENDENNIS



Builder: PENNENNIS

Year Built: 1995

Model: Schooner

Price: PRICE ON APPLICATION

Location: Antigua and Barbuda

LOA: 181' 11" (55.44m)

Beam: 25' 11" (7.88m)

Min Draft: 16' 3" (4.95m)

Max Draft: 24' 6" (7.46m)

Max Speed: 12 Kts. (14 MPH)

Our experienced yacht broker, Andrey Shestakov, will help you choose and buy a yacht that best suits your needs **ADELA — PENDENNIS** from our catalogue. Presently, at Shestakov Yacht Sales Inc., we have a wide variety of yachts available on our sale's list. We also work in close contact with all the big yacht manufacturers from all over the world.

If you would like to buy a yacht **ADELA — PENDENNIS** or would like help answering any questions concerning purchasing, selling or chartering a yacht, please call **+1(954)274-4435**

TABLE OF CONTENTS

TABLE OF CONTENTS	2
SPECIFICATIONS	3
Basic Information	3
Dimensions	3
Speed, Capacities and Weight	3
Accommodations	3
Hull and Deck Information	4
Engine Information	4
DETAILED INFORMATION	5
Detailed Description	5
Exclusions	16
Disclaimer	17
PHOTOS	18
CONTACTS	28
Contact details	28
Telephones	28
Office hours	28
Address	28

SPECIFICATIONS

Basic Information

Category: Schooner

Model Year: 1995

Year Built: 1995

Country: Antigua and Barbuda

Dimensions

LOA: 181' 11" (55.44m)

LWL: 119' 6" (36.41m)

LOD: 146' 6" (44.63m)

Beam: 25' 11" (7.88m)

Min Draft: 16' 3" (4.95m)

Max Draft: 24' 6" (7.46m)

Speed, Capacities and Weight

Max Speed: 12 Kts. (14 MPH)

Displacement: 500000 Pounds

Gross Tonnage: 169 Pounds

Water Capacity: 2438.836384064 Gallons

Fuel Capacity: 4732.906483632 Gallons

Accommodations

Total Cabins: 4

Sleeps: 8

Crew Cabin: 4

Crew Sleeps: 9

Hull and Deck Information

Hull Material: Steel

Deck Material: Teak

Hull Designer: Gerard Dijkstra

Exterior Designer: Gerard Dijkstra

Interior Designer: Gerard
Dijkstra/Pendennis

Engine Information

Engines: 1

Manufacturer: Caterpillar

Model: C18 ACERT

Fuel Type: Diesel

DETAILED INFORMATION

Detailed Description

1. MAIN CHARACTERISTICS

TYPE	Sailing Yacht – Schooner
BUILDER	Pendennis
NAVAL ARCHITECT	Gerard Dijkstra
EXTERIOR DESIGN	Gerard Dijkstra
INTERIOR DESIGN	J.G. Fay & Co/Pendennis
YEAR	1995
RESTORATION YEAR	1995 Pendennis Falmouth
CLASSIFICATION	Lloyds Register of Shipping +100A1 SSC Yacht Mono G6 MCH (“+” Maltese Cross)
FLAG	Cayman Island Shipping Registry
CONSTRUCTION	Steel Hull & Superstructure, Teak Decks
KEEL	Bulbous fin, houses vertical keel - dagger board
BALLAST	54 tons of led ballast + 3 tons lead pigs port side dry stores bilge
IMO	8955536
ENGINES	1 x Caterpillar – Marine Diesel C18 ACERT 873 Hp / 650kW @ 22,00rpm
GT	169
NT	50
DISPLACEMENT	250 tonnes

2. DIMENSIONS

LOA	55.44m / 181’8” (50m pre-remodel / 55.44m post-remodel)
LENGTH ON DECK	44.63m / 146’4”
LWL	36.41m / 119’4”
BEAM	7.88m / 25’8”
DRAFT	4.95m / 16’2” board down 7.46m / 24’4” board up
AIR DRAFT	48.60m / 159’4”

3. SPEED UNDER POWER

MAXIMUM SPEED 12 knots

4. CAPACITIES

ACCOMMODATION 8 x Guests in 4 cabins
CREW 9 x Crew in 4 cabins
FUEL 17,916 litres / 4,732 US gallons
FRESH WATER 9,232 litres / 2,438 US gallons
SLUDGE 1,746 litres / 461 US gallons
LUBE OIL 867 litres / 230 US gallons
GLYCOL 483 litres / 127 US gallons
GREY WATER 3,049 litres / 805 US gallons
BLACK WATER 2,527 litres / 667 US gallons

5. ACCOMMODATION

MASTER SUITE 1 x Full beam Master suite with large starboard en suite & lounge area

GUEST CABINS 1 x Double cabin with en suite out board to port of passageway
 2 x Twin cabins with en suites P&S

CREW Normal crew: 9 / Maximum crew: 11
 2 x Upper/lower bunk cabins 1 x Quadruple cabin 2 x Heads
 1 x Captain's cabin with head & double bed (possible 2 x people)
 1 x Single bunk cabin aft of laundry (not currently in use)
 Crew mess

6. MECHANICAL EQUIPMENT

ENGINES 1 x Caterpillar – Marine Diesel C18 ACERT
 873 Hp / 650kW @ 22,00rpm Flexible mounts

ENGINE HOURS 9,014 hours March 2019

GEARBOX ZF200 - Ratio 3.519:1

ENGINE / TRANS Close coupled with Vulcan coupling

OUTDRIVE BOX Rigid trunnion mounts

SHAFT BRAKE Fitted - pneumatic

SHAFT SEAL Wartsila deep sea – water fed – inflatable seal

CONTROLS	Push button - Helm station & ER with indication
PUMPS	AC hydraulic pump - keeps feathered position when in sailing
PROPELLERS	Hundested VP9nVariable pitch – hydraulic Serial #: 5514 4-blade 1200 mm diameter
SHAFT	120 mm stainless steel with internal push rod
BEARING	2 x Composite bearings (Duramax) – fwd. & aft end shaft tube
STEERING & RUDDER	Whitlock
BOWTHRUSTER	Ocean Yacht Systems (fixed right-angle drive lower unit) Hinged - Retractable – Hydraulic - dual propeller Rated Output: 63 kW 2 x 4-blade – 398 mm dia. – bronze
STERN THRUSTER	In a tunnel in the Bustle
GENERATORS	2 x Northern Lights / John Deer 55 kW @ 1,500 rpm 400-volt AC, 3-phase, 50 Hertz Model: M1064T2/55 kW
GENERATOR HOURS	#1: 14,170 / #2: 18,697 hours March 2019
ELECTRICITY	230/400 50 Hz 3-phase 24V
SHORE POWER	1 x 30 m 100-amp shore cords Atlas Frequency Converter - 50 KVA – SPCL50KX5X3-XH MSB Breaker: Merlin Gerin
BATTERIES	(All Gel Cell)
MAIN ENGINE	24-volt - 2 x 12-volt 8D – Mastervolt charger & alternator charging
GENERATOR	24-volt - 2 x 12-volt 8D – alternator charging off each unit
GMDSS	24-volt – 2 x 12-volt 8D – 25 amp – aft nav station
EMERGENCY	24-volt - 2 x 12-V 8D – 25 amp – crew passage
SERVICE BANK	24-volt - 24 x 2-volt – 590 AH – 2 x 100 amp
CHARGERS	Mastervolt chargers
INVERTERS	4 x 5,000 watt Mastervolt inverters
HYDRAULICS	Main tank in ER with level indication & temp. alarm 7.5 kW AC pump with 45 cc hydraulic pump 3 x 147 cc pumps with clutches (main engine & 2 x generators)

	Nitrogen noise suppressors fitted
	Consumers:
	All winches
	3 x Furlers
	Boom outhauls
	Dagger board motor
	Steering
AIR CONDITIONING	Cruisaire
	Main chiller: 3 x sealed compressors with VFDs
	1 x Chill water & 1 x sea water pump
	3 x 72,000 = 216,000 BTU
	Make-Up Air: 2 x Mar-IX units
	13,800 BTU cooling each & 2.25 kW re-heaters
	Fan Coils: 22 with 3-way valves
COMPRESSED AIR SYSTEM	Hydrovane compressor in pump room
	Reservoirs: 50 litre
	Working Pressure: approx. 7-8 bar
WATER MAKER	HEM series 30 - HP Pumps: CAT direct drive
	LP Pumps: Calpeda 0.75 kW
	3 x Membranes
	Filters: Sand, media, charcoal
	Capacity: 14,400 per day
WATER SYSTEM	2 x Domestic pumps – Aspiro – pump room
	Accumulator tanks p
	Boilers: 2 x 250 litre with 3 x 3 kW elements
	2 x hot water circ. pumps
	Silver ion
	Water softener
TOILET SYSTEM	Altena – 7 x fresh water fed
SEWAGE SYSTEM	Hamann Mini Plus
FUEL SEPARATOR	Racor fuel filters
7. SAILS & RIGGING	
SAILS	Sails from 2011 - 2012 North Sails UK includes the following:
	Cruising Fore Main
	Cruising Main
	Tri'sle

Cruising Stay'sle
Cruising Yanky

Cruising No.2 JIB

Storm Stay Sail

Code 0

A 2

A3

A4

OLD A4

J1

J2

Spin stay'sle

Prestige (stay'sle)

Square top fore main

Running main stay'sle

Reaching main stay'sle

Square top main

SPAR & RIGGING

Masts, booms and spreaders are carbon fibre by

Magma Structures UK

Both masts keel stepped with hydraulic jacking systems

Main mast: 3 spreader – swept back – Jumpers

Foremast: 3 spreader

BOOMS

Both fitted with stainless steel spreaders

No hydraulic vang's

Hydraulic outhauls

RIGGING

Standing rigging: EC6 carbon (new 2016)

Running rigging: Spectra

Head foils – None

Rig last service by Tim Haines (THL of Cowes-UK)

in Palma – 2016

Rigs painted with Awlgrip at that time

BOW SPRIT

Duplex stainless steel

Stainless steel martingales and dolphin striker

Stainless steel wire rigging with turnbuckles

FURLERS

Hercules hydraulic – Code zero on bow sprit

Hercules hydraulic x 2 – P & S staysail

BLOCKS & HARDWARE

Majority are stainless steel by Hercules

WINCHES	All Lewmar open reel type
FOREMAST	2 x 58 manual
FOREDECK	2 x 77 manual
	2 x 111 custom hydraulic
	2 x 111 hydraulic
	1 x 58 manual
	2 x 88 hydraulic
MID DECK	2 x 58 manual
MAIN MAST	2 x 58 manual
MAIN MAST DECK	2 x 111 Hydraulic
	6 x 88 hydraulic
	2 x 122 hydraulic
AFT DECK	2 x 77 manual
	2 x 111 hydraulic
	2 x 88 hydraulic
	2 x 88 manual

8. NAVIGATION EQUIPMENT

SHIP'S OFFICE – NAV STATION

- Anshutz gyro
- 2 x Furuno radars
- Furuno Time Zero chart Nav system
- Furuno AIS
- Furuno Navtex
- Sailor Sat C – no printer
- APCII – B&G autopilot
- Simrad VHF
- Raytheon hailer
- 3 x Monitors
- Ship's computer
- Weems clock & barometer
- Inclinator

HELM STATION

- Magnetic compass

- B&G autopilot
- B&G rudder angle
- 6 x B&G displays

CREW MESS

- Sailor VHF
- B&G readout
- Monitor and controller for CCTV cameras
- Furuno monitor for chart and radar
- 3 x Cameras – 2 in ER & one on mast - All PTZ
- Iridium handset
- Fleet broadband handset

9. COMMUNICATION EQUIPMENT

- Iridium
- Fleet 500 broadband
- VSAT
- SAT C
- GSM

10. DECK EQUIPMENT

AFT WARPING CAPSTANS	2 x Muir VR 7000 - hydraulic vertical-chain gypsy-Capstan Foredeck mounted
ANCHORS	2 x Poole N fully balanced – Stockless Bower – 270 kg
ANCHOR CHAINS	2 x 200m - 17.4 mm U2 galvanized chain Kenter shackles & Swivels
PASSERELLE	Manual composite & teak passarelle
SWIMMING LADDER	Manual SS & Teak swim ladder
FAIRLEADS / MOORING	20 x Bulwark fairleads 6 x Stainless steel mooring cleats 2 x Stainless steel & teak mooring cleats

11. ENTERTAINMENT EQUIPMENT

GENERAL

- KVH TV dome
- TV's in master, main salon, deck house captain & crew mess

- NAS drive movie server
- Sonas sound system at each TV
- Kerio for Internet management
- KVH VSAT
- Fleet Broadband
- Iridium Hand held
- Ship's computer with server

12. GALLEY & LAUNDRY EQUIPMENT

GALLEY

- SS sink

Miele electric oven

- Walk in fridge and walk in freezer

Foster 2-door fridge

- Gaggeneau 6 burner propane cooktop
- Gaggeneau propane oven
- 3 x 20 lbs propane tanks on deck with gas solenoid

Safety solenoid switch in galley

- 3 x Gas detector below deck
- CO2 fire suppression in galley duct

MAIN PANTRY

- Stainless steel sink
- Hot-chill water dispenser
- Miele bar fridge
- Wine cooler
- Scotsman icemaker

DECK

- 2 x bar fridges

LAUNDRY

- 2 x Miele Washing machine
- 2 x Miele Dryer machine

CREW MESS

Siemens microwave

- Miele dishwasher
- Hot-Chilled water tap

13. SAFETY & SECURITY EQUIPMENT

FIREFIGHTING & SAFETY

In compliance with LR and flag state with all equipment in date

- Safety plan indicates 8 x Guests and 9 x Crew
- Fire detection panel
- Gas detection panel
- 15 x Smoke detectors
- 2 x Head detectors

Emergency exit

- Bilge hatch access
- CO2 release station – For galley hood
- Novec release station – Engine Room
- Stat-X Release Station – For pump room
- Water release station
- Fire blanket
- 3 x Emergency fire pump
- 3 x Break glass switch for fire alarm
- Fire plan location

2 x General fire alarms

- Horn signal
- Fireman's outfit
- 2 x Hydrants
- Fire axe
- Breathing apparatus
- 2 x Remote fire pump start
- 2 x Remote hydraulic shut off
- Fire damper machinery spaces
- 3 x 20m fire hose water

- Space protected by Novec
- Space protected by STAT-X
- Water fog applicator
- 2 x 9 Ltr Water portable fire extinguisher
- 6 x 2 kg powder portable fire extinguisher
- 1 x 9 kg. powder portable fire extinguisher
- 4 x 2L foam portable fire extinguisher
- 1 x 9L foam portable fire extinguisher
- 1 x 2 kg. CO2 portable fire extinguisher
- 1 x 5 kg. CO2 Portable fire extinguisher
- Spare extinguishers (1 x 9L AFFF)
- Ship's bell
- 2 x Jonbuoy recovery modules
- 4 x 8 person life rafts
- 4 x Line thrower
- 2 x Lifebuoy with smoke & light
- 1 x Lifebuoy with life line
- EPIRB
- SART
- Flares
- 17 x Life Jackets
- First aid kit
- 20 x Immersion Suits
- Rescue Boat
- Smoke-Heat detection ED820 – control head crew mess
- 3 x Gas Detectors

BILGE & FIRE SYSTEM

- Main Fire AC in pump room (also chain wash)
- Main Bilge, Hydraulic driven (can also do fire)
- Main Bilge AC in pump room (can also do fire)
- Manifold in ER with 4 x suction locations
- Emergency Pump; Yanmar diesel crash pump on deck
- 3 x Fire Hydrants with 20m hoses on deck
- Forepeak 220-volt submersible plus Whale gulper DC
- 4 x Pumps Par DC diaphragm (Dry store, Battery Bilge, lazarette, Engine Room)
- 5 x Level sensors (forepeak-ER-dry stores-battery bilge-lazarette)

14. CONSTRUCTION

EXTERIOR PAINT FINISH

- Hull Topsides: Jet with metallic silver cove and 2 x white boot stripes
- Superstructure: Metallic silver

Complete topsides & superstructure paint completed in May 2015 by Pinmar in STP, Palma de Mallorca, Spain

- All paint is Alexseal
- Paint on spars is original metallic silver Alexseal

TEAK DECKING

- The decks overlaid in teak
- Finish thickness approx. 16 mm

Seaming & adhesive by Teak Decking Systems

- No fasteners used
- Decks new in 2016 by TDS

DECKS & SUPERSTRUCTURE

The entire superstructure and bulwarks clad in varnished teak

- Teak cap rail the full perimeter of the bulwarks
- All varnish is kept to high standards & in first class condition
- Main decks flush with raised steel bulwarks clad in varnished teak

Bulwarks 300-350mm high

- Aft ship has short SS stanchions & wire life lines to bring height of 500 mm
- P&S side bulwark gates
- Flush teak forepeak hatch
- Raise hatch for escape from forward cabins
- Gas locker aft of foremast
- Forward companionway aft of gas locker
- Salon skylight forward of main mast
- Main house with electric sliding hatch & air seal
- Cockpit aft of dog house with removable Bimini

Aft house with companionway entrance to nav. station

- Centre helm station and main boom gallows aft

15. TENDER EQUIPMENT

TENDER

- 1 x Ribeye (UK) 550 – 5.50m Fiberglass Rigid inflatable – centre console
- HIN: GBRBI042556414 (2014 model)
- Outboard 115 Hp Yamaha 4-stroke Stored on Foredeck
- Chocks: Stainless steel removable

TENDER LAUNCHING

- Spinnaker halyard is used to a power winch
- It is feasible to launch the tender using a winch with manual driven winch handle

16. COMMENTS

The design challenge presented by ADELA was to incorporate every conceivable modern yacht system and convenience into the original interior without losing the charm and elegance of the original W.C. Storey design.

Today, ADELA cuts a classic profile blending traditional fittings with modern technology within her sumptuous interior as well as on deck. Custom made blocks and winches, concealed state of the art communications and a modern climate control system all provide the comfort and convenience one would expect on a modern superyacht. Since her initial restoration Adela has seen the most extensive maintenance program which includes rig, full engineering overhaul, new generators, new paint, teak decks, minor interior and electrical work. A full detailed breakdown is available upon request.

A highly competitive racing yacht, ADELA has twice graced the Pendennis Cup fleet, winning the event overall in 2010. Since then she has become a contender for the major superyacht racing titles with victories in the St Barths Bucket, RORC Caribbean 600, Antigua Superyacht Challenge and the America's Cup Superyacht Regatta over the past five years.

A 2019 survey report from one of the most reputable surveying companies concluded: "ADELA is a well-designed and well-constructed yacht on a good maintenance program. The vessel is in full compliance with class and flag state as a pleasure yacht. She has a fantastic track record on the race course and has always been very well maintained."

ADELA contains the original spirit of her history from 1903 with all the benefits and reliability of today. Whether cruising the world or racing, she is a distinctive and impressive classic schooner with character and a timeless style.

Exclusions

Owner's personal belongings.

Disclaimer

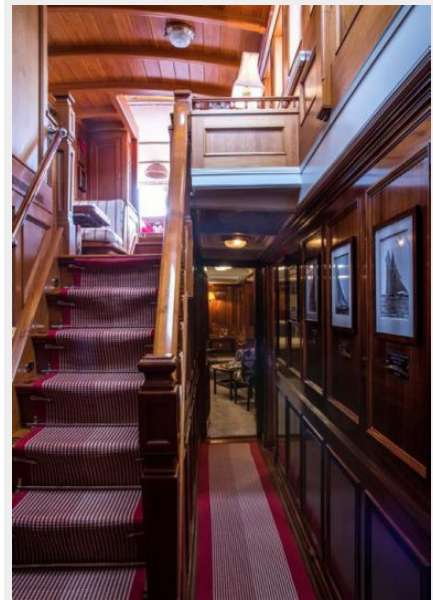
The Company offers the details of this vessel or yacht in good faith but cannot guarantee or warrant the accuracy of this information nor warrant the condition of the vessel. A buyer should instruct his representatives, agents, or his surveyors, to investigate such details as the buyer desires validated. This vessel or yacht is offered subject to prior sale, price change, or withdrawal without notice.

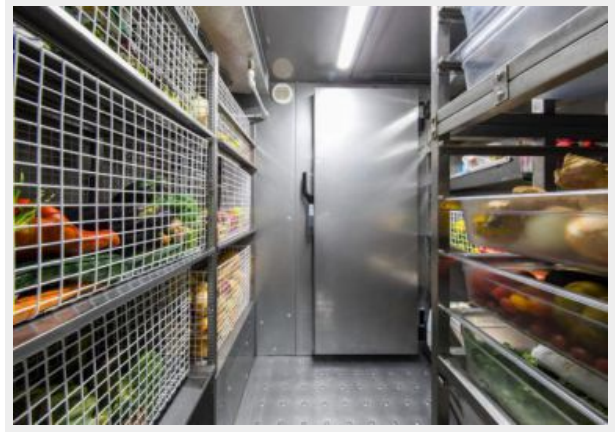
PHOTOS

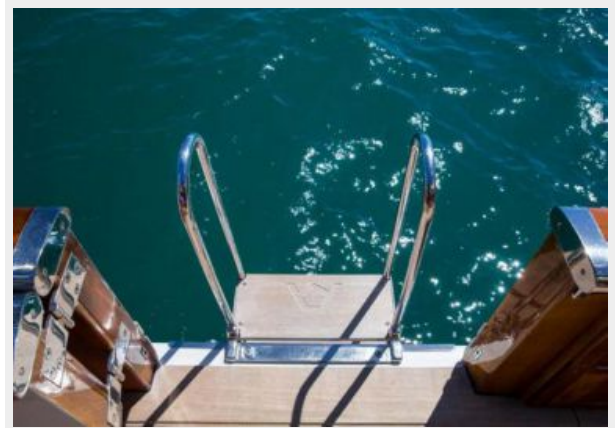








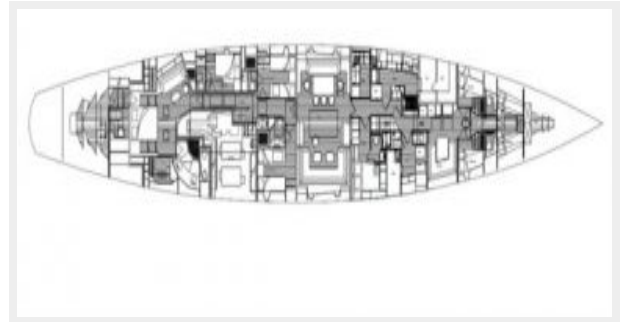












CONTACTS

Andrey Shestakov, leading yacht broker of the sales department of Shestakov Yacht Sales Inc. Shestakov Yacht Sales Inc., the official representative of the Miami/Fort Lauderdale FL headquarters.

Contact details

Email: andrey@shestakovyachtsales.com

Web: shestakovyachtsales.com/en/

Telephones

USA: +1(954)274-4435

Office hours

Monday – Saturday: **9:00 - 21:00** EDT

Sunday: **closed**

Address



Harbour Towne Marina, 850 NE 3rd St,
STE 213, Dania, FL 33004