

## ADELA — PENDENNIS



**Судостроитель:** PENNENNIS

**Год постройки:** 1995

**Модель:** Шхуна

**Цена:** **ЦЕНА ЯХТЫ ПО ЗАПРОСУ**

**Местонахождение:** Antigua and Barbuda

**Длина общая:** 181' 11" (55.44m)

**Ширина:** 25' 11" (7.88m)

**Мин. осадка:** 16' 3" (4.95m)

**Макс. осадка:** 24' 6" (7.46m)

**Макс. скорость:** 12 Kts. (14 MPH)

Купить **ADELA — PENDENNIS** а также выбрать подходящую вам яхту из нашего каталога яхт вам поможет опытный яхтенный брокер Андрей Шестаков. На сегодняшний день компания **Shestakov Yacht Sales Inc.** имеет большое количество яхт в собственном списке продаж, а также тесно сотрудничает со всеми крупными яхтенными производителями по всему миру.

Для того чтобы купить яхту **ADELA — PENDENNIS** а также проконсультироваться по любому вопросу связанному с покупкой, продажей, чартером яхт позвоните по телефону **+7(918)465-66-44**.

# ОГЛАВЛЕНИЕ

---

ОГЛАВЛЕНИЕ	2
ХАРАКТЕРИСТИКИ	3
Основная информация	3
Размеры	3
Скорость, вместимость и масса	3
Размещение	3
Корпус и палуба	4
Информация о двигателе	4
ПОДРОБНОЕ ОПИСАНИЕ	5
Detailed Description	5
Исключения	16
Отказ от ответственности	17
ФОТОГРАФИИ	18
КОНТАКТЫ	28
Контактная информация	28
Телефоны	28
Время работы	28
Адрес	28

# ХАРАКТЕРИСТИКИ

## Основная информация

Тип судна: Шхуна

Модельный год: 1995

Год постройки: 1995

Страна: Antigua and Barbuda

## Размеры

Длина общая: 181' 11" (55.44m)

Длина по ватерлинии: 119' 6" (36.41m)

Длина палубы: 146' 6" (44.63m)

Ширина: 25' 11" (7.88m)

Мин. осадка: 16' 3" (4.95m)

Макс. осадка: 24' 6" (7.46m)

## Скорость, вместимость и масса

Макс. скорость: 12 Kts. (14 MPH)

Водоизмещение: 500000 Pounds

Чистый вес: 169 Pounds

Вместимость воды: 2438.836384064  
Gallons

Объем топливного бака: 4732.906483632  
Gallons

## Размещение

Всего кают: 4

Спальные места: 8

Каюты экипажа: 4

Спальных мест экипажа: 9

## Корпус и палуба

---

**Материал корпуса:** Steel

**Материал палубы:** Teak

**Дизайнер корпуса:** Gerard Dijkstra

**Дизайнер экстерьера:** Gerard Dijkstra

**Дизайнер интерьера:** Gerard  
Dijkstra/Pendennis

## Информация о двигателе

---

**Двигатели:** 1

**Производитель:** Caterpillar

**Модель:** C18 ACERT

**Тип топлива:** Diesel

# ПОДРОБНОЕ ОПИСАНИЕ

## Detailed Description

### 1. MAIN CHARACTERISTICS

<b>TYPE</b>	Sailing Yacht – Schooner
<b>BUILDER</b>	Pendennis
<b>NAVAL ARCHITECT</b>	Gerard Dijkstra
<b>EXTERIOR DESIGN</b>	Gerard Dijkstra
<b>INTERIOR DESIGN</b>	J.G. Fay & Co/Pendennis
<b>YEAR</b>	1995
<b>RESTORATION YEAR</b>	1995 Pendennis Falmouth
<b>CLASSIFICATION</b>	Lloyds Register of Shipping +100A1 SSC Yacht Mono G6 MCH (“+” Maltese Cross)
<b>FLAG</b>	Cayman Island Shipping Registry
<b>CONSTRUCTION</b>	Steel Hull & Superstructure, Teak Decks
<b>KEEL</b>	Bulbous fin, houses vertical keel - dagger board
<b>BALLAST</b>	54 tons of led ballast + 3 tons lead pigs port side dry stores bilge
<b>IMO</b>	8955536
<b>ENGINES</b>	1 x Caterpillar – Marine Diesel C18 ACERT 873 Hp / 650kW @ 22,00rpm
<b>GT</b>	169
<b>NT</b>	50
<b>DISPLACEMENT</b>	250 tonnes

### 2. DIMENSIONS

<b>LOA</b>	<b>55.44m / 181’8”</b> <b>(50m pre-remodel / 55.44m post-remodel)</b>
<b>LENGTH ON DECK</b>	<b>44.63m / 146’4”</b>
<b>LWL</b>	<b>36.41m / 119’4”</b>
<b>BEAM</b>	<b>7.88m / 25’8”</b>
<b>DRAFT</b>	<b>4.95m / 16’2” board down</b> <b>7.46m / 24’4” board up</b>
<b>AIR DRAFT</b>	<b>48.60m / 159’4”</b>

### 3. SPEED UNDER POWER

**MAXIMUM SPEED** 12 knots

#### **4. CAPACITIES**

**ACCOMMODATION** 8 x Guests in 4 cabins  
**CREW** 9 x Crew in 4 cabins  
**FUEL** 17,916 litres / 4,732 US gallons  
**FRESH WATER** 9,232 litres / 2,438 US gallons  
**SLUDGE** 1,746 litres / 461 US gallons  
**LUBE OIL** 867 litres / 230 US gallons  
**GLYCOL** 483 litres / 127 US gallons  
**GREY WATER** 3,049 litres / 805 US gallons  
**BLACK WATER** 2,527 litres / 667 US gallons

#### **5. ACCOMMODATION**

**MASTER SUITE** 1 x Full beam Master suite with large starboard en suite & lounge area

**GUEST CABINS** 1 x Double cabin with en suite out board to port of passageway  
 2 x Twin cabins with en suites P&S

**CREW** Normal crew: 9 / Maximum crew: 11  
 2 x Upper/lower bunk cabins 1 x Quadruple cabin 2 x Heads  
 1 x Captain's cabin with head & double bed (possible 2 x people)  
 1 x Single bunk cabin aft of laundry (not currently in use)  
 Crew mess

#### **6. MECHANICAL EQUIPMENT**

**ENGINES** 1 x Caterpillar – Marine Diesel C18 ACERT  
 873 Hp / 650kW @ 22,00rpm Flexible mounts

**ENGINE HOURS** 9,014 hours March 2019

**GEARBOX** ZF200 - Ratio 3.519:1

**ENGINE / TRANS** Close coupled with Vulcan coupling

**OUTDRIVE BOX** Rigid trunnion mounts

**SHAFT BRAKE** Fitted - pneumatic

**SHAFT SEAL** Wartsila deep sea – water fed – inflatable seal

<b>CONTROLS</b>	Push button - Helm station & ER with indication
<b>PUMPS</b>	AC hydraulic pump - keeps feathered position when in sailing
<b>PROPELLERS</b>	Hundested VP9nVariable pitch – hydraulic Serial #: 5514 4-blade 1200 mm diameter
<b>SHAFT</b>	120 mm stainless steel with internal push rod
<b>BEARING</b>	2 x Composite bearings (Duramax) – fwd. & aft end shaft tube
<b>STEERING &amp; RUDDER</b>	Whitlock
<b>BOWTHRUSTER</b>	Ocean Yacht Systems (fixed right-angle drive lower unit) Hinged - Retractable – Hydraulic - dual propeller Rated Output: 63 kW 2 x 4-blade – 398 mm dia. – bronze
<b>STERN THRUSTER</b>	In a tunnel in the Bustle
<b>GENERATORS</b>	2 x Northern Lights / John Deer 55 kW @ 1,500 rpm 400-volt AC, 3-phase, 50 Hertz Model: M1064T2/55 kW
<b>GENERATOR HOURS</b>	#1: 14,170 / #2: 18,697 hours March 2019
<b>ELECTRICITY</b>	230/400 50 Hz 3-phase 24V
<b>SHORE POWER</b>	1 x 30 m 100-amp shore cords Atlas Frequency Converter - 50 KVA – SPCL50KX5X3-XH MSB Breaker: Merlin Gerin
<b>BATTERIES</b>	(All Gel Cell)
<b>MAIN ENGINE</b>	24-volt - 2 x 12-volt 8D – Mastervolt charger & alternator charging
<b>GENERATOR</b>	24-volt - 2 x 12-volt 8D – alternator charging off each unit
<b>GMDSS</b>	24-volt – 2 x 12-volt 8D – 25 amp – aft nav station
<b>EMERGENCY</b>	24-volt - 2 x 12-V 8D – 25 amp – crew passage
<b>SERVICE BANK</b>	24-volt - 24 x 2-volt – 590 AH – 2 x 100 amp
<b>CHARGERS</b>	Mastervolt chargers
<b>INVERTERS</b>	4 x 5,000 watt Mastervolt inverters
<b>HYDRAULICS</b>	Main tank in ER with level indication & temp. alarm 7.5 kW AC pump with 45 cc hydraulic pump 3 x 147 cc pumps with clutches (main engine & 2 x generators)

	Nitrogen noise suppressors fitted Consumers:
	All winches
	3 x Furlers
	Boom outhauls
	Dagger board motor
	Steering
<b>AIR CONDITIONING</b>	Cruisaire
	Main chiller: 3 x sealed compressors with VFDs
	1 x Chill water & 1 x sea water pump
	3 x 72,000 = 216,000 BTU
	Make-Up Air: 2 x Mar-IX units
	13,800 BTU cooling each & 2.25 kW re-heaters
	Fan Coils: 22 with 3-way valves
<b>COMPRESSED AIR SYSTEM</b>	Hydrovane compressor in pump room
	Reservoirs: 50 litre
	Working Pressure: approx. 7-8 bar
<b>WATER MAKER</b>	HEM series 30 - HP Pumps: CAT direct drive
	LP Pumps: Calpeda 0.75 kW
	3 x Membranes
	Filters: Sand, media, charcoal
	Capacity: 14,400 per day
<b>WATER SYSTEM</b>	2 x Domestic pumps – Aspiro – pump room
	Accumulator tanks p
	Boilers: 2 x 250 litre with 3 x 3 kW elements
	2 x hot water circ. pumps
	Silver ion
	Water softener
<b>TOILET SYSTEM</b>	Altena – 7 x fresh water fed
<b>SEWAGE SYSTEM</b>	Hamann Mini Plus
<b>FUEL SEPARATOR</b>	Racor fuel filters
<b>7. SAILS &amp; RIGGING</b>	
<b>SAILS</b>	Sails from 2011 - 2012 North Sails UK includes the following:
	Cruising Fore Main
	Cruising Main
	Tri'sle



Cruising Stay'sle  
Cruising Yanky

Cruising No.2 JIB

Storm Stay Sail

Code 0

A 2

A3

A4

OLD A4

J1

J2

Spin stay'sle

Prestige (stay'sle)

Square top fore main

Running main stay'sle

Reaching main stay'sle

Square top main

## **SPAR & RIGGING**

Masts, booms and spreaders are carbon fibre by

Magma Structures UK

Both masts keel stepped with hydraulic jacking systems

Main mast: 3 spreader – swept back – Jumpers

Foremast: 3 spreader

## **BOOMS**

Both fitted with stainless steel spreaders

No hydraulic vang

Hydraulic outhauls

## **RIGGING**

Standing rigging: EC6 carbon (new 2016)

Running rigging: Spectra

Head foils – None

Rig last service by Tim Haines (THL of Cowes-UK)

in Palma – 2016

Rigs painted with Awlgrip at that time

## **BOW SPRIT**

Duplex stainless steel

Stainless steel martingales and dolphin striker

Stainless steel wire rigging with turnbuckles

## **FURLERS**

Hercules hydraulic – Code zero on bow sprit

Hercules hydraulic x 2 – P & S staysail

## **BLOCKS & HARDWARE**

Majority are stainless steel by Hercules

<b>WINCHES</b>	All Lewmar open reel type
<b>FOREMAST</b>	2 x 58 manual
<b>FOREDECK</b>	2 x 77 manual
	2 x 111 custom hydraulic
	2 x 111 hydraulic
	1 x 58 manual
	2 x 88 hydraulic
<b>MID DECK</b>	2 x 58 manual
<b>MAIN MAST</b>	2 x 58 manual
<b>MAIN MAST DECK</b>	2 x 111 Hydraulic
	6 x 88 hydraulic
	2 x 122 hydraulic
<b>AFT DECK</b>	2 x 77 manual
	2 x 111 hydraulic
	2 x 88 hydraulic
	2 x 88 manual

## **8. NAVIGATION EQUIPMENT**

### **SHIP'S OFFICE – NAV STATION**

- Anshutz gyro
- 2 x Furuno radars
- Furuno Time Zero chart Nav system
- Furuno AIS
- Furuno Navtex
- Sailor Sat C – no printer
- APCII – B&G autopilot
- Simrad VHF
- Raytheon hailer
- 3 x Monitors
- Ship's computer
- Weems clock & barometer
- Inclinator

### **HELM STATION**

- Magnetic compass

- B&G autopilot
- B&G rudder angle
- 6 x B&G displays

### **CREW MESS**

- Sailor VHF
- B&G readout
- Monitor and controller for CCTV cameras
- Furuno monitor for chart and radar
- 3 x Cameras – 2 in ER & one on mast - All PTZ
- Iridium handset
- Fleet broadband handset

## **9. COMMUNICATION EQUIPMENT**

- Iridium
- Fleet 500 broadband
- VSAT
- SAT C
- GSM

## **10. DECK EQUIPMENT**

<b>AFT WARPING CAPSTANS</b>	2 x Muir VR 7000 - hydraulic vertical-chain gypsy-Capstan Foredeck mounted
<b>ANCHORS</b>	2 x Poole N fully balanced – Stockless Bower – 270 kg
<b>ANCHOR CHAINS</b>	2 x 200m - 17.4 mm U2 galvanized chain Kenter shackles & Swivels
<b>PASSERELLE</b>	Manual composite & teak passarelle
<b>SWIMMING LADDER</b>	Manual SS & Teak swim ladder
<b>FAIRLEADS / MOORING</b>	20 x Bulwark fairleads 6 x Stainless steel mooring cleats 2 x Stainless steel & teak mooring cleats

## **11. ENTERTAINMENT EQUIPMENT**

### **GENERAL**

- KVH TV dome
- TV's in master, main salon, deck house captain & crew mess

- NAS drive movie server
- Sonas sound system at each TV
- Kerio for Internet management
- KVH VSAT
- Fleet Broadband
- Iridium Hand held
- Ship's computer with server

## **12. GALLEY & LAUNDRY EQUIPMENT**

### **GALLEY**

- SS sink

Miele electric oven

- Walk in fridge and walk in freezer

Foster 2-door fridge

- Gaggenau 6 burner propane cooktop
- Gaggenau propane oven
- 3 x 20 lbs propane tanks on deck with gas solenoid

Safety solenoid switch in galley

- 3 x Gas detector below deck
- CO2 fire suppression in galley duct

### **MAIN PANTRY**

- Stainless steel sink
- Hot-chill water dispenser
- Miele bar fridge
- Wine cooler
- Scotsman icemaker

### **DECK**

- 2 x bar fridges

### **LAUNDRY**

- 2 x Miele Washing machine
- 2 x Miele Dryer machine

### **CREW MESS**

Siemens microwave

- Miele dishwasher
- Hot-Chilled water tap

### **13. SAFETY & SECURITY EQUIPMENT**

#### **FIREFIGHTING & SAFETY**

In compliance with LR and flag state with all equipment in date

- Safety plan indicates 8 x Guests and 9 x Crew
- Fire detection panel
- Gas detection panel
- 15 x Smoke detectors
- 2 x Head detectors

Emergency exit

- Bilge hatch access
- CO2 release station – For galley hood
- Novec release station – Engine Room
- Stat-X Release Station – For pump room
- Water release station
- Fire blanket
- 3 x Emergency fire pump
- 3 x Break glass switch for fire alarm
- Fire plan location

2 x General fire alarms

- Horn signal
- Fireman's outfit
- 2 x Hydrants
- Fire axe
- Breathing apparatus
- 2 x Remote fire pump start
- 2 x Remote hydraulic shut off
- Fire damper machinery spaces
- 3 x 20m fire hose water

- Space protected by Novec
- Space protected by STAT-X
- Water fog applicator
- 2 x 9 Ltr Water portable fire extinguisher
- 6 x 2 kg powder portable fire extinguisher
- 1 x 9 kg. powder portable fire extinguisher
- 4 x 2L foam portable fire extinguisher
- 1 x 9L foam portable fire extinguisher
- 1 x 2 kg. CO2 portable fire extinguisher
- 1 x 5 kg. CO2 Portable fire extinguisher
- Spare extinguishers (1 x 9L AFFF)
- Ship's bell
- 2 x Jonbuoy recovery modules
- 4 x 8 person life rafts
- 4 x Line thrower
- 2 x Lifebuoy with smoke & light
- 1 x Lifebuoy with life line
- EPIRB
- SART
- Flares
- 17 x Life Jackets
- First aid kit
- 20 x Immersion Suits
- Rescue Boat
- Smoke-Heat detection ED820 – control head crew mess
- 3 x Gas Detectors

## **BILGE & FIRE SYSTEM**

- Main Fire AC in pump room (also chain wash)
- Main Bilge, Hydraulic driven (can also do fire)
- Main Bilge AC in pump room (can also do fire)
- Manifold in ER with 4 x suction locations
- Emergency Pump; Yanmar diesel crash pump on deck
- 3 x Fire Hydrants with 20m hoses on deck
- Forepeak 220-volt submersible plus Whale gulper DC
- 4 x Pumps Par DC diaphragm (Dry store, Battery Bilge, lazarette, Engine Room)
- 5 x Level sensors (forepeak-ER-dry stores-battery bilge-lazarette)

## **14. CONSTRUCTION**

### **EXTERIOR PAINT FINISH**

- Hull Topsides: Jet with metallic silver cove and 2 x white boot stripes
- Superstructure: Metallic silver

Complete topsides & superstructure paint completed in May 2015 by Pinmar in STP, Palma de Mallorca, Spain

- All paint is Alexseal
- Paint on spars is original metallic silver Alexseal

### **TEAK DECKING**

- The decks overlaid in teak
- Finish thickness approx. 16 mm

Seaming & adhesive by Teak Decking Systems

- No fasteners used
- Decks new in 2016 by TDS

### **DECKS & SUPERSTRUCTURE**

The entire superstructure and bulwarks clad in varnished teak

- Teak cap rail the full perimeter of the bulwarks
- All varnish is kept to high standards & in first class condition
- Main decks flush with raised steel bulwarks clad in varnished teak

Bulwarks 300-350mm high

- Aft ship has short SS stanchions & wire life lines to bring height of 500 mm
- P&S side bulwark gates
- Flush teak forepeak hatch
- Raise hatch for escape from forward cabins
- Gas locker aft of foremast
- Forward companionway aft of gas locker
- Salon skylight forward of main mast
- Main house with electric sliding hatch & air seal
- Cockpit aft of dog house with removable Bimini

Aft house with companionway entrance to nav. station

- Centre helm station and main boom gallows aft

## **15. TENDER EQUIPMENT**

### **TENDER**

- 1 x Ribeye (UK) 550 – 5.50m Fiberglass Rigid inflatable – centre console
- HIN: GBRBI042556414 (2014 model)
- Outboard 115 Hp Yamaha 4-stroke Stored on Foredeck
- Chocks: Stainless steel removable

### **TENDER LAUNCHING**

- Spinnaker halyard is used to a power winch
- It is feasible to launch the tender using a winch with manual driven winch handle

## **16. COMMENTS**

The design challenge presented by ADELA was to incorporate every conceivable modern yacht system and convenience into the original interior without losing the charm and elegance of the original W.C. Storey design.

Today, ADELA cuts a classic profile blending traditional fittings with modern technology within her sumptuous interior as well as on deck. Custom made blocks and winches, concealed state of the art communications and a modern climate control system all provide the comfort and convenience one would expect on a modern superyacht. Since her initial restoration Adela has seen the most extensive maintenance program which includes rig, full engineering overhaul, new generators, new paint, teak decks, minor interior and electrical work. A full detailed breakdown is available upon request.

A highly competitive racing yacht, ADELA has twice graced the Pendennis Cup fleet, winning the event overall in 2010. Since then she has become a contender for the major superyacht racing titles with victories in the St Barths Bucket, RORC Caribbean 600, Antigua Superyacht Challenge and the America's Cup Superyacht Regatta over the past five years.

A 2019 survey report from one of the most reputable surveying companies concluded: "ADELA is a well-designed and well-constructed yacht on a good maintenance program. The vessel is in full compliance with class and flag state as a pleasure yacht. She has a fantastic track record on the race course and has always been very well maintained."

ADELA contains the original spirit of her history from 1903 with all the benefits and reliability of today. Whether cruising the world or racing, she is a distinctive and impressive classic schooner with character and a timeless style.

---

## **Исключения**

При продаже яхты исключаются личные вещи владельца.



---

## Отказ от ответственности

---

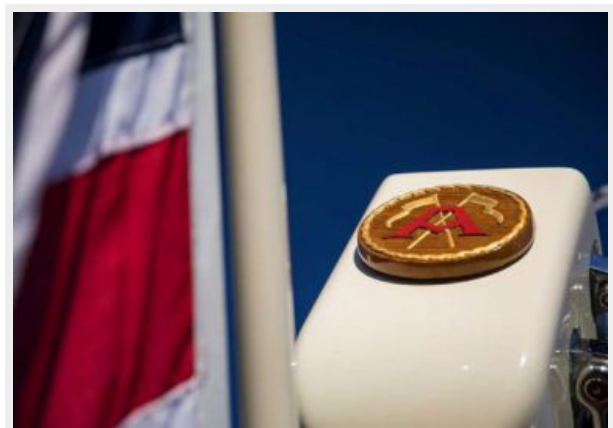
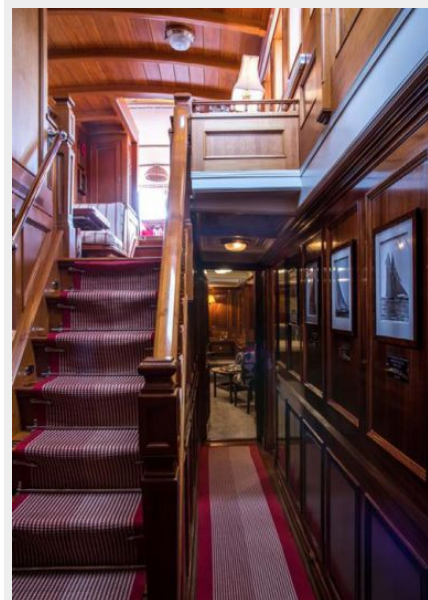
Компания предоставляет описание судна или яхты добросовестно, но не может гарантировать точность этой информации, а также не ручается за техническое состояние. Покупатель должен проинструктировать своих агентов или оценщиков исследовать представленную информацию более подробно, по собственному желанию. Продажа судна или яхты, изменение цены или снятие с продажи будет происходить без предварительного уведомления.

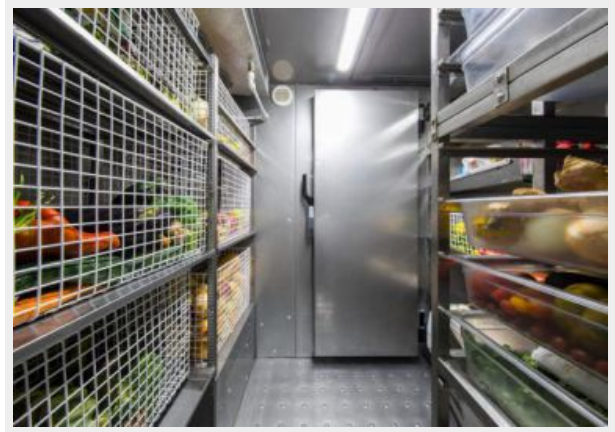
# ФОТОГРАФИИ

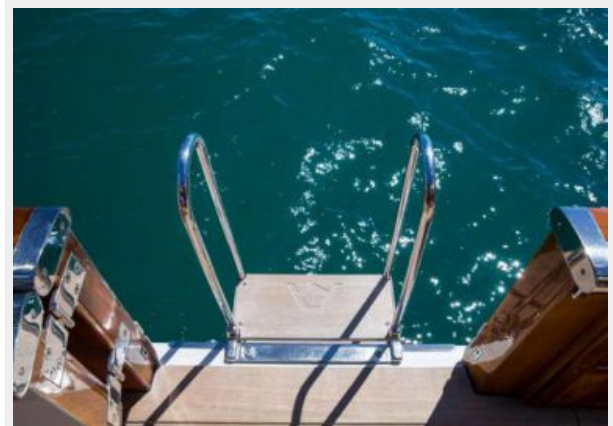










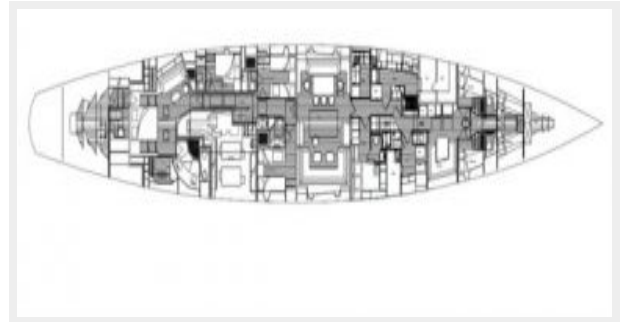












# КОНТАКТЫ

---

Андрей Шестаков (Andrey Shestakov) – ведущий яхтенный брокер отдела продаж яхт и судов компании Shestakov Yacht Sales Inc. Официальный представитель Shestakov Yacht Sales Inc. для русскоговорящих клиентов в центральном офисе компании в Майами/Форт Лодердейл/Флорида/США.

## Контактная информация

---

Email: [andrey@shestakovyachtsales.com](mailto:andrey@shestakovyachtsales.com)

Web: [shestakovyachtsales.com](http://shestakovyachtsales.com)

## Телефоны

---

Краснодарский край: **+7(918)465-66-44**

США, Майами, Флорида: **+1(954)274-4435**

## Время работы

---

Понедельник – Суббота: **9:00 - 21:00**  
EDT

Воскресенье: **Закрето**

## Адрес

---



Harbour Towne Marina, 850 NE 3rd St,  
STE 213, Dania, FL 33004