

## DEDEBAY — POSILLIPO



**Builder:** POSILLIPO

**Year Built:** 1996

**Model:** Motor Yacht

**Price:** PRICE ON APPLICATION

**Location:** Turkey

**LOA:** 83' 8" (25.50m)

**Beam:** 20' 9" (6.32m)

**Min Draft:** 0' 0" (0.00m)

**Max Draft:** 8' 7" (2.60m)

**Cruise Speed:** 22 Kts. (25 MPH)

**Max Speed:** 27 Kts. (31 MPH)

Our experienced yacht broker, Andrey Shestakov, will help you choose and buy a yacht that best suits your needs **DEDEBAY — POSILLIPO** from our catalogue. Presently, at Shestakov Yacht Sales Inc., we have a wide variety of yachts available on our sale's list. We also work in close contact with all the big yacht manufacturers from all over the world.

If you would like to buy a yacht **DEDEBAY — POSILLIPO** or would like help answering any questions concerning purchasing, selling or chartering a yacht, please call **+1(954)274-4435**

---

# TABLE OF CONTENTS

---

TABLE OF CONTENTS	2
SPECIFICATIONS	3
Overview	3
Basic Information	3
Dimensions	4
Speed, Capacities and Weight	4
Accommodations	4
Hull and Deck Information	4
Engine Information	4
PHOTOS	5
CONTACTS	7
Contact details	7
Telephones	7
Office hours	7
Address	7

---

# SPECIFICATIONS

---

## Overview

---

**200.000 USD was spent for full refit in 2018**

### **New Electronics**

**SIMRAD Radar, GPS Plotter, Autopilot, Echosounder**

**VHF with DSC/GMDSS; RF35**

**Satelite TV, NAVISTEM**

**4.30 m Tender with 70 HP Yamaha Outboard**

**3.20 m Tender with 9.9 HP Yamaha Outboard**

**Bow and stern truster**

**27 KW Onan, 22.5 KW Onan and 6.5 KW Onan Generators**

**Tecnomar watermaker 300 lit/h**

---

## Basic Information

---

**Category:** Motor Yacht

**Sub Category:** Flybridge

**Model Year:** 1999

**Year Built:** 1996

**Country:** Turkey

**Fly Bridge:** Yes

**Cockpit:** Yes

---

## Dimensions

---

**LOA:** 83' 8" (25.50m)

**LWL:** 0' 0" (0.00m)

**LOD:** 0' 0" (0.00m)

**Beam:** 20' 9" (6.32m)

**Min Draft:** 0' 0" (0.00m)

**Max Draft:** 8' 7" (2.60m)

**Clearance:** 0' 0" (0.00m)

**MFG Length:** 0' 0" (0.00m)

---

## Speed, Capacities and Weight

---

**Cruise Speed:** 22 Kts. (25 MPH)

**Max Speed:** 27 Kts. (31 MPH)

**Water Capacity:** 396.258078 Gallons

**Holding Tank:** 118.8774234 Gallons

**Fuel Capacity:** 1981.29039 Gallons

---

## Accommodations

---

**Total Cabins:** 4

**Total Berths:** 6

**Sleeps:** 8

**Total Heads:** 4

---

## Hull and Deck Information

---

**Hull Material:** Fiberglass

**Hull Configuration:** Deep Vee

**Hull Designer:** Zuccon

---

## Engine Information

---

**Engines:** 2

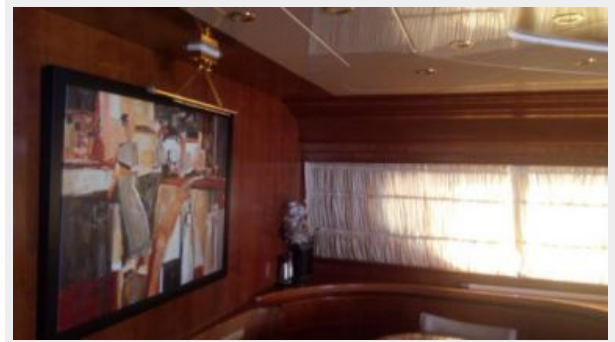
**Manufacturer:** MTU

**Model:** 16V 2000 M90

**Engine Type:** Inboard

**Fuel Type:** Diesel

# PHOTOS







# CONTACTS

---

Andrey Shestakov, leading yacht broker of the sales department of Shestakov Yacht Sales Inc. Shestakov Yacht Sales Inc., the official representative of the Miami/Fort Lauderdale FL headquarters.

## Contact details

---

Email: [andrey@shestakovyachtsales.com](mailto:andrey@shestakovyachtsales.com)

Web: [shestakovyachtsales.com/en/](http://shestakovyachtsales.com/en/)

## Telephones

---

USA: +1(954)274-4435

## Office hours

---

Monday – Saturday: **9:00 - 21:00** EDT

Sunday: **closed**

## Address

---



Harbour Towne Marina, 850 NE 3rd St,  
STE 213, Dania, FL 33004