

PENURY — SEA RAY



Builder: SEA RAY

Year Built: 2000

Model: Motor Yacht

Price: PRICE ON APPLICATION

Location: United States

LOA: 45' 0" (13.72m)

Beam: 14' 8" (4.47m)

Min Draft: 3' 5" (1.04m)

Our experienced yacht broker, Andrey Shestakov, will help you choose and buy a yacht that best suits your needs Penury — SEA RAY from our catalogue. Presently, at Shestakov Yacht Sales Inc., we have a wide variety of yachts available on our sale's list. We also work in close contact with all the big yacht manufacturers from all over the world.

If you would like to buy a yacht Penury — SEA RAY or would like help answering any questions concerning purchasing, selling or chartering a yacht, please call +1(954)274-4435

TABLE OF CONTENTS

TABLE OF CONTENTS	2
SPECIFICATIONS	4
Overview	4
Basic Information	4
Dimensions	4
Speed, Capacities and Weight	4
Accommodations	5
Hull and Deck Information	5
Engine Information	5
PHOTOS	6
Bow	6
Starboard Side	6
Clean Bottom	6
Salon Entertainment Area	6
Dinette	6
Galley	6
Galley	7
Master Stateroom	7
Master Stateroom	7
Master Stateroom	7
Master Head	7
Master Head	7
Master Head	8
Guest Head	8
Guest Head	8
Guest Head	8
Aft Cabin	8
Mid Cabin	8

Mid Cabin	9
Helm	9
AC Control	9
Helm	9
Main Distribution Panel	9
Bridge	9
Bridge	10
Bridge	10
Engine Room	10
Engine Room	10
Battery Charger	10
Racors	10
CONTACTS	11
Contact details	11
Telephones	11
Office hours	11
Address	11

SPECIFICATIONS

Overview

Reliable Cummins power with a epoxied bottom and new canvas. The Sea Ray designers were able to incorporate a unique floor-plan whose raised salon dinette conceals two staterooms below. Her aft stateroom, which is accessed via a private entryway next to the salon door, built-in washer/dryer. Guests in the midship stateroom have direct access to one of two heads, and the forward stateroom is fitted with a pedestal berth as well as a full entertainment center. High gloss cherry cabinetry, faux granite countertops, and vinyl overheads highlight her upscale European styled, and voluminous interior. Topside the large flybridge has an L-Shaped centerline helm with a wet bar, and plenty of seating. A wide stairway forward of the bridge provides safe access to the foredeck.

Basic Information

Category: Motor Yacht

Sub Category: Flybridge

Model Year: 2000

Year Built: 2000

Country: United States

Fly Bridge: Yes

Cockpit: Yes

Dimensions

LOA: 45' 0" (13.72m)

Beam: 14' 8" (4.47m)

Min Draft: 3' 5" (1.04m)

Speed, Capacities and Weight

Displacement: 29500 Pounds

Water Capacity: 100 Gallons

Holding Tank: 60 Gallons

Fuel Capacity: 400 Gallons

Accommodations

Total Cabins: 3

Total Heads: 2

Hull and Deck Information

Hull Material: Fiberglass

Hull Configuration: Deep Vee

Engine Information

Engines: 2

Manufacturer: Cummins

Model: 6CTA 8.3-M3

Engine Type: Inboard

Fuel Type: Diesel

PHOTOS

Bow



Starboard Side



Clean Bottom



Salon Entertainment Area



Dinette



Galley



Galley



Master Stateroom



Master Stateroom



Master Stateroom



Master Head



Master Head



Master Head



Guest Head



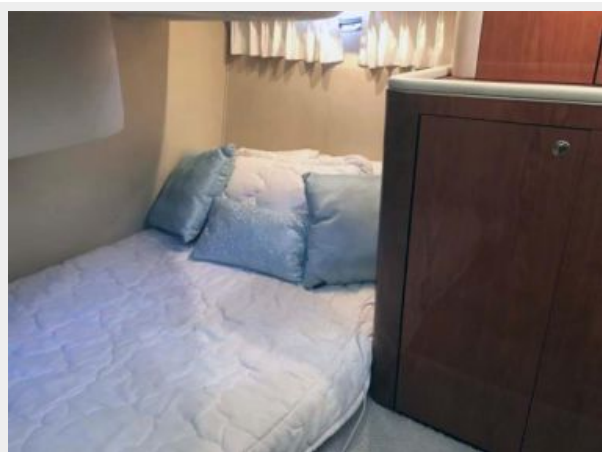
Guest Head



Guest Head



Aft Cabin



Mid Cabin



Mid Cabin



Helm



Helm



AC Control



Main Distribution Panel



Bridge



Bridge



Bridge



Engine Room



Engine Room



Battery Charger



Racors



CONTACTS

Andrey Shestakov, leading yacht broker of the sales department of Shestakov Yacht Sales Inc. Shestakov Yacht Sales Inc., the official representative of the Miami/Fort Lauderdale FL headquarters.

Contact details

Email: andrey@shestakovyachtsales.com

Web: shestakovyachtsales.com/en/

Telephones

USA: +1(954)274-4435

Office hours

Monday – Saturday: **9:00 - 21:00** EDT

Sunday: **closed**

Address



Harbour Towne Marina, 850 NE 3rd St,
STE 213, Dania, FL 33004