

## ENDLESS SUMMER — HATTERAS



**Судостроитель:** HATTERAS

**Год постройки:** 2008

**Модель:** Моторная яхта

**Цена:** ЦЕНА ЯХТЫ ПО ЗАПРОСУ

**Местонахождение:** United States

**Длина общая:** 73' 4" (22.35m)

**Ширина:** 20' 2" (6.15m)

**Макс. осадка:** 5' 4" (1.63m)

**Крейс. скорость:** 20 Kts. (23 MPH)

**Макс. скорость:** 25 Kts. (29 MPH)

Купить **ENDLESS SUMMER — HATTERAS** а также выбрать подходящую вам яхту из нашего каталога яхт вам поможет опытный яхтенный брокер Андрей Шестаков. На сегодняшний день компания **Shestakov Yacht Sales Inc.** имеет большое количество яхт в собственном списке продаж, а также тесно сотрудничает со всеми крупными яхтенными производителями по всему миру.

Для того чтобы купить яхту **ENDLESS SUMMER — HATTERAS** а также проконсультироваться по любому вопросу связанному с покупкой, продажей, чартером яхт позвоните по телефону **+7(918)465-66-44**.

# ОГЛАВЛЕНИЕ

ОГЛАВЛЕНИЕ	2
ХАРАКТЕРИСТИКИ	5
Обзор	5
Основная информация	5
Размеры	5
Скорость, вместимость и масса	5
Размещение	6
Корпус и палуба	6
Информация о двигателе	6
ПОДРОБНОЕ ОПИСАНИЕ	7
KEY FEATURES:	7
Overview	7
Vessel Walkthrough	7
Salon	8
Galley	9
Master Suite	9
Forward VIP Guest Stateroom	10
Starboard Guest Stateroom	10
Guest Head	11
Aft Guest/Crew Stateroom	11
Aft Deck & Swim Platform	11
Flybridge & Boat Deck	12
Deck Equipment & Hardware	13
Navigation Electronics & Equipment	13
A/V & Miscellaneous Electronics	14
Engine Room & Mechanical Equipment	14
Electrical System	15
Exterior Finish & Construction	16

Additional	16
Exclusions	16
Исключения	16
Отказ от ответственности	17
<b>ФОТОГРАФИИ</b>	<b>18</b>
Port Bow Profile	18
Port Profile	18
Flybridge Forward	18
Flybridge Starboard	18
Flybridge Port	18
Flybridge Aft	18
Flybridge Bar	19
Flybridge Bar	19
Flybridge Starboard Aft	19
Crown LTD Helm Chairs	19
Helm to Port	19
Helm	19
Helm	20
Helm	20
Boat Deck to Starboard	20
Boat Deck Settee	20
Boat Deck to Port	20
Steelhead Davit	20
Boat Deck Forward to Starboard	21
Boat Deck Forward to Port	21
Rendova Tender	21
Rendova Tender	21
Grill	21
Grill	21

---

Port Side Deck	22
Port Bow	22
Bow Aft	22
Starboard Bow	22
Bow Sun Pad	22
Port Bow	22
Bow	23
General Arrangement	38
<b>КОНТАКТЫ</b>	<b>39</b>
Контактная информация	39
Телефоны	39
Время работы	39
Адрес	39

# ХАРАКТЕРИСТИКИ

## Обзор

- Original Owner Yacht, highly customized
- Yacht Controller® wireless remote control, gears, thrusters, & windlass
- ABT hydraulic bow & stern thrusters
- TRAC stabilizers
- Rendova tender & upgraded davit
- Teak & Maple main deck sole
- Watermaker

## Основная информация

**Тип судна:** Моторная яхта

**Подкатегория:** Крейсер

**Модельный год:** 2008

**Год постройки:** 2008

**Страна:** United States

**Верх:** Hardtop

## Размеры

**Длина общая:** 73' 4" (22.35m)

**Ширина:** 20' 2" (6.15m)

**Макс. осадка:** 5' 4" (1.63m)

**Длина привального бруса:** 72' 0"  
(21.95m)

## Скорость, вместимость и масса

**Крейс. скорость:** 20 Kts. (23 MPH)

**Крейсерская скорость поворота:** 2000  
Kts.

**Макс. скорость:** 25 Kts. (29 MPH)

**Макс. скорость поворота:** 2300 Kts.

**Водоизмещение:** 160000 Pounds

**Вместимость воды:** 300 Gallons

**Вместимость сточного бака:** 350 Gallons **Объем топливного бака:** 2200 Gallons

## Размещение

---

**Всего кают:** 4

**Всего коек:** 6

**Спальные места:** 8

**Всего ком. состава:** 6

**Каюты экипажа:** 1

**Койки экипажа:** 1

**Спальных мест экипажа:** 2

**Комм. состав экипажа:** 1

## Корпус и палуба

---

**Материал корпуса:** Fiberglass

**Материал палубы:** Teak and Fiberglass

**Комплектация корпуса:** Modified V-Hull

**Цвет корпуса:** Alexseal Cloud White

**Отделка корпуса:** Fiberglass

## Информация о двигателе

---

**Двигатели:** 2

**Производитель:** Caterpillar

**Модель:** C-32

**Тип двигателя:** Inboard

**Тип топлива:** Diesel

---

# ПОДРОБНОЕ ОПИСАНИЕ

---

## KEY FEATURES:

---

- Original Owner Yacht, highly customized
- Yacht Controller® wireless remote control, gears, thrusters, & windlass
- ABT hydraulic bow & stern thrusters
- TRAC stabilizers
- Rendova tender & upgraded davit
- Teak & Maple main deck sole
- Watermaker

## Overview

---

ENDLESS SUMMER is a beautiful one owner, customized example of the Hatteras 72 Motoryacht. She features hydraulic bow & stern thrusters, stabilizers, twin Caterpillar generators, watermaker, hardtop with climate controlled bridge, and more! Her spacious four stateroom layout provides sumptuous accommodations for owner and guests featuring a full beam master suite with an adjacent custom owner's office/lounge. The fourth stateroom with island queen size berth is located aft with access from both the salon and transom door perfect for either guests or crew. An amazing layout for a yacht of this size all while providing full walk-around side decks and an abundance of exterior living areas, perfect for the owner/operator.

Built and finished with the quality one expects in a Hatteras yacht, the attention to detail on ENDLESS SUMMER is easy to see from her African Mahogany high gloss interior joinerwork with burl wood accents all the way to her bright exterior Cloud White Alexseal painted finish.

Owner's new boat is on the way, bring offers!

## Vessel Walkthrough

---

Beginning aft on the swim platform, port and starboard stairs lead up to the teak aft deck, which features a molded-in cushioned settee, large teak table and four deck chairs. A drop TV is overhead. Forward to port is a stairway leading up to the flybridge and boat deck. Wide, full walk-around side decks with bulwarks lead to the bow.

The salon is entered through a stainless steel framed sliding glass door. Flooring on the interior main deck is teak & maple. Immediately to port is a granite top table height wet bar with three bar chairs. The inboard custom tile floor of the bar is sunken twelve inches. Behind the bar outboard are custom storage cabinets for glass and bottle storage. Directly below the bar inboard is additional storage and a 24 bottle Sub Zero wine cooler. A door inside and aft of the bar leads to a stairwell down to the fourth guest/crew stateroom and the engine room. A 42" TV is mounted

above the bar for visibility throughout the salon. On the starboard side of the salon is a reclining chair with ottoman and full size sofa with cocktail tables. Forward to starboard is a custom built storage cabinet followed by the day head. Forward on the port side is the custom mahogany round dining table with four chairs. On the forward port bulkhead are glass door display cabinets framed in mahogany and mappa burl.

Forward of the salon, up one step is the galley which has been highly customized with additional storage cabinetry and upgraded appliances. The forward dinette is also custom with a port side built in buffet, half fold up leaf mahogany & burl dining table, and two loose dining chairs. There are port and starboard access doors to the side decks.

Forward to starboard is a stairwell leading down to the owner and guests accommodations. Aft is the full beam master suite with standard king size berth, his and hers baths and adjacent owner's office/lounge. This area is completely customized with a built-in mahogany desk with flip-down cover, book shelves with TV and an L-shaped sofa. Across the companionway to starboard from the master is the guest stateroom with upper and lower berths. Forward to port is the guest head with stall shower. All the way forward is the VIP guest stateroom with queen size berth and ensuite head and stall shower.

There are two access stairways to the open flybridge from either the aft deck or the galley.

The engine room and aft guest/crew stateroom are accessed from the transom or the salon.

---

## Salon

---

- 42" Sharp Aquos LCD TV
- Surround sound audio system w/(5) overhead speakers
- Sunken wet bar w/Sub Zero 24 bottle wine cooler, (2) bar chairs, glass & bottle storage cabinetry
- Leather reclining chair w/ottoman
- Tweed upholstered sofa w/storage beneath
- Aft built-in end table w/magazine rack & table lamp
- Brass adjustable floor lamp
- (2) black lacquer glass top cocktail tables w/ fitted birdseye maple serving trays
- Faux alligator chrome base round end table forward
- AJ Originals custom mahogany 54" round dining table w/self stored leaf in pedestal & (4) upholstered dining chairs w/throw pillows
- Custom recessed overhead ceiling treatment over dining table w/triple bullnose molding & chandelier
- Forward port side china & glass display cabinets (2) above, (4) cabinets below w/Mappa Burl insets
- Forward starboard side custom black lacquer storage cabinet w/Mappa Burl insets
- Main deck day head w/ "Tigris Mesh" tile floor, Plexiglas mirrored ceiling "Nero Portorro" marble counter, hammered nickel undermounted sink & Headhunter Royal Flush toilet



---

## Galley

---

- Sub Zero 661, 36" side by side stainless steel refrigerator & freezer
- (2) Sub Zero BR700 refrigerator drawers
- Sharp Insight Pro stainless steel combination ceramic 4 burner cooktop, conventional & convection oven and microwave
- Sharp stainless steel exhaust hood over cooktop
- Kitchen Aid double drawer dishwasher
- Granite counter tops
- Franke under-mounted double stainless steel sink, w/soap dispenser
- Badger garbage disposal
- Franke instant hot water dispenser
- Franke stainless steel faucet
- Black & Decker toaster oven
- Granite top island w/built-in trash bin, (2) 27" refrigerator drawers, storage drawer, pull out serving tray storage, magazine rack forward
- Custom ceiling cabinet over island w/ 18" doors inboard & outboard, lighting on bottom
- Starboard side storage pantry, pull out spice rack, broom closet forward
- Custom forward dinette w/ mahogany & Mappa Burl dining table on pedestals w/ hinged half fold back leaf
- (2) dining chairs
- Forward port side granite top buffet w/ (4) large storage drawers
- Port & starboard pantograph doors to side decks
- 20" Sharp Aquos LCD TV

---

## Master Suite

---

The master suite on ENDLESS SUMMER is completely custom. Entering through a pocket door, is a lounge/office area complete built-in desk, book shelves, file & storage cabinets, L-shaped sofa and TV. Down one step through another pocket door is the master stateroom with centerline standard (76"x 80") king size bed, his & her baths, two large cedar lined hanging lockers, port & starboard built-in dressers and a makeup vanity with stool. Flanking the bed are two built-in end tables with four drawers each. High gloss Zebra Wood is used on the aft bulkhead and the platform of the master berth. Triple bullnose mahogany molding overhead surrounds the head and foot of the bed. Port and starboard aft are his and hers baths separated by a large stall shower with (3) individually controlled body wash shower heads in addition to the standard shower. The baths have custom tile floors and Plexiglas mirrored ceilings.

Concealed in a cabinet in the companionway just outside of the master suite entry is the laundry with front loading side by side Whirlpool washer and dryer with laundry supply compartment above.

- King-sized berth with headboard

- HMC upgraded mattress, spread, throw pillows, pillow shams, mattress pad and sheets
- (2) Ventilating portlights w/screens and (4) additional fixed portlights
- (2) Cedar-lined wardrobes w/ double doors and automatic lights
- (2) Nightstands w/ drawers
- Dressers with drawers, port and starboard
- 26" Sharp Aquos LCD TV
- Stereo speakers
- Audio system control keypad
- (2) table lamps
- AC dimmable overhead lights
- AC duplex outlets
- Telephone outlet
- Carbon monoxide detector
- Full-length mirror
- DC low-level lights under berth
- (2) Sconce lights
- Carpeted sole

---

## Forward VIP Guest Stateroom

---

- Queen size centerline island berth w/ upgraded HMC mattress, lift-up cedar-lined storage beneath & (2) storage drawers
- Mirrored bulkhead
- Overhead hatch w/Oceanair shade/screen
- Side storage cabinets, port & starboard
- Cedar lined hanging locker w/custom telescoping hanging bar & (2) shelves below for shoes & laundry
- Carpeted sole
- 20" Sharp Aquos LCD TV
- Stereo speakers
- Audio system control keypad
- Full length mirror
- Ensuite head w/stall shower, Plexiglas mirrored ceiling, custom tile floor & alabaster onyx countertop
- CO2 detector

---

## Starboard Guest Stateroom

---

- Upper & lower berths w/custom large storage drawer beneath
- Custom shelves adjacent to each bunk
- 20" Sharp Aquos LCD TV
- Stereo speakers

- Audio system control keypad
- Bed spreads, pillows & shams
- Full length mirror

## Guest Head

---

Located on the port side of the companionway forward of the master and guest staterooms is the guest head.

- Plexiglas mirrored ceiling
- Mahogany vanity w/storage cabinets beneath
- Royal Onyx countertop w/bullnose edge
- Honey Onyx mosaic tile floor
- Round stall shower w/sliding glass door
- Headhunter Royal Flush toilet

## Aft Guest/Crew Stateroom

---

The aft stateroom is accessible from the salon or transom door. With all of the amenities of the forward staterooms it is perfectly suited for guests, captain or crew.

- Queen size island berth
- Upgraded HMC mattress
- Built-in nightstand w/drawers & table lamp
- 20" Sharp Aquos LCD TV
- Hanging locker
- Custom flip-down mahogany desk/table
- Haier 1.8 cu ft refrigerator in stairwell to salon
- Stereo speakers
- Audio control panel
- Ensuite head w/stall shower, Plexiglas mirrored ceiling, teak & maple floor, Headhunter Royal Flush toilet, vanity w/ mirrored cabinets

## Aft Deck & Swim Platform

---

- Aft molded fiberglass settee w/cushions
- Textilene® mesh aft sunshade w/U-zip opening center panel
- 48" round varnished teak table
- (4) Kingsley Bate teak directors chairs w/mesh seats & backs
- 20" Sharp Aquos drop down overhead TV
- Remote audio controls
- Stainless steel ships bell

- Aft deck side boarding gates
- Teak aft deck sole
- Starboard molded fiberglass stairway to bridge w/teak steps & stainless steel handrails
- Port & starboard molded stairs to swim platform w/teak steps & stainless steel handrails
- Non-skid swim platform w/(8) stainless steel hoop rails
- Watertight pantograph transom door

## Flybridge & Boat Deck

The flybridge is accessed from either the aft deck or from the galley. It features a centerline helm station, forward, served by two top of the line adjustable Crown LTD chairs on stainless steel pedestals. The helm chair is electric and the companion chair is manually adjustable. A wet bar with three Crown LTD stools with backs, to port, abaft of the helm creates a casual entertainment area. Forward to starboard is a built-in Marvel refrigerator. Molded fiberglass seating, port and starboard farther aft allows for easy conversation and includes cavernous storage beneath. A fully integrated hardtop and full glass forward windshield with wipers along with side EZ2CY panels, aft Strataglass enclosure and air conditioning make this a versatile area in all climates.

The boat deck includes custom lounge seating and a Gaggenau double barbecue grill. An upgraded 1500 lb. Steelhead hydraulic davit services the 15' Rendova tender with 40 hp Yamaha outboard motor.

- Teak flybridge sole
- Welded and polished stainless-steel grab rails and stanchions
- Tinted tempered glass windshield w/wipers & washers
- Helm station with all necessary switches and dimmable lighted instruments
- (2) Crown LTD Mariner adjustable helm chairs w/stainless steel pedestals & footrests (Captain's chair is electrically adjustable)
- Chart storage locker w/plexiglass lid, port side of helm
- Painted aluminum radar arch with masthead light and anchor light
- Compass with dimmable light
- Adjustable helmsman and companion seat with covers (Pompanette)
- Port & Starboard molded fiberglass lounge seating w/custom Sunbrella covered cushions, covers and storage beneath
- Teak cocktail table w/eagle insert
- Plexiglass access door to galley stairs below
- Audio system control, LCD keypad and a pair of waterproof Pioneer speakers.
- Key bar with sink, granite top & storage cabinets beneath (plumbed and wired for ice maker)
- (3) Crown LTD Mariner bar stools
- Marvel stainless steel face refrigerator in fiberglass cabinet w/stone top
- Molded-in teak stairs to aft deck with hatch cover
- DC low-level lights

- Gaggenau double grill, boat deck
- Steelhead SM 1500R davit w/retractable boom & power rotation
- 15' Rendova Hard bottom inflatable tender w/ 40 hp Yamaha 4 stroke outboard motor & cover
- 6' lounge seat w/cushions & half round Avonite end tables centerline aft of flybridge
- Upgraded flybridge air conditioning
- Integrated hardtop w/fixed forward windshields, wipers and washers, panels port and starboard at side openings UPGRADE
- Strataglass enclosure across aft
- EZ2CY side enclosure panels

## Deck Equipment & Hardware

---

- Welded and polished stainless steel anchor chute
- 90 pound plow anchor with deck hawse pipe
- Maxwell VWC-4000 Windlass with 300 feet of hot dipped galvanized chain w/deck mounted controls
- Polished stainless steel cleats through bolted with aluminum backing plates
- Walk around side decks with overhead fender storage compartments
- Marquipt Tide Ride eight step sea stairs with hidden storage, starboard side
- Forward sun pad with multi-position adjustable backrest & cover
- International navigation lights
- Dual air horns
- Courtesy deck lights
- Underwater lights
- Port & Starboard fender tracks
- Watertight transom door
- Stainless steel transom bustle hoop rails (raised 5" above standard)
- Stainless steel aft deck stair rails to swim platform (raised 3" above standard)
- Stainless steel side deck hoop rails (maintained at 36" above deck)
- Stainless steel flybridge rails (raised to 36" above deck)

## Navigation Electronics & Equipment

---

- (2) Furuno NavNet 3D multi-function displays (one Furuno display, one black box)
- Furuno 72 nm radar
- Nobeltec PC chart plotter
- (4) 17" VEI sunlight display monitors
- VEI SSIR LCD Control Panel
- VEI computer mouse
- Furuno RD-30 4.5" depth & navigation data display
- Simrad AP50 autopilot

- Carlisle & Finch Nightfinder™ integrated thermal camera & searchlight
- (2) Uniden UM625C VHF transceivers
- AIS receiver
- Simrad RI35 Rudder position indicator
- Floscan fuel monitoring system

---

## A/V & Miscellaneous Electronics

---

- Kaleidescape Audio/Video server
- Upgraded Sharp LCD TV's throughout
- KVH Tracvision satellite TV system
- WiFi amplifier/repeater
- Roku wireless video streaming via WiFi
- (3) closed circuit cameras, engine room & aft deck
- Caterpillar GPLink® remote monitoring & diagnostic system

---

## Engine Room & Mechanical Equipment

---

The engine room on the Hatteras 72 Motor Yacht is unrivaled by any yacht in this size range, a theme that rings true throughout the whole boat. A true walk in engine room with the precise layout and engineering Hatteras is famous for, this area will be the envy of almost every owner and captain. Well lit with abundant room to actually walk around the big CATs the electrical and plumbing runs are like artwork, everything is clearly labeled and easy to service.

- Twin Caterpillar C32, 1550 hp diesels
- Caterpillar GPLink® remote monitoring & diagnostic system
- ZF 2350 Transmissions w/ 4:1 Gear Ratios
- American Bow Thruster (ABT) Hydraulic Bow (dual prop 32 hp) and Stern Thrusters
- ABT TRAC stabilizers
- Caterpillar electronic single-lever clutch and throttle controls w/ emergency back-up and engine synchronization
- YACHT CONTROLLER® dual band wireless remote control, gears, thrusters & windlass
- 4" Diameter Stainless Alloy H22HS Propeller Shafts
- 8 Blade Veem custom 48" x 65.1/4" propellers (new 2018)
- Stainless steel rudders
- SeaStar hydraulic steering
- Manganese bronze rudders w/ dripless seals
- Electric fuel transfer system with filtration and dry tank protection for pump
- U.L. Marine listed fiberglass tanks constructed from fire retardant resin with bronze fittings and coated with fire retardant paint
- Water manifold system with centralized shut-off valves
- AC and DC engine room lighting

- DC ventilation blower
- FM200 automatic fire suppression system
- Delta T pressure and temperature controlled forced air induction system from walk arounds resulting in no hull side engine vents
- AC air compressor
- 110-volt AC oil changing system for engines, generators and gears with Hatteras patented quick disconnect
- 55 gallon fresh oil tank plumbed to oil change system w/dockside fill`
- Racor fuel filter/water separator on each generator and dual filters on engines
- Electric fuel priming pumps
- Bright white polyurethane painted engine room and bilges
- Pickup and Discharge sea chests
- Engine mounted start and stop switches and hour meters
- Cruisair 90,000 BTU Air Conditioning with reverse cycle heating, air handlers, w/ SMX controls in each compartment
- Cruisair AC sea water pump w/backup plumbed & wired
- Headhunter sanitation system
- Sewage holding tank with AC sewage pump, plumbed for dockside pump-out with a 3/4 full display and alarm as part of the monitor programmable logic controller (330 gallons)
- Fiberglass water tanks (300 gallons)
- Headhunter Mach 5 AC freshwater pump
- 30 gallon hot water heater, engine room
- 20 gallon hot water heater, forward bilge compartment
- Back-up DC fresh water pump
- Well-X freshwater pressure tank
- Engine room freshwater fill for engines and generators
- Watermakers Inc. Water Maker
- Reverse Osmosis Water Filter
- Grey water tank (185 gallons)
- Bennett Trim Tabs
- (6) 3700 gph 24V automatic bilge pumps w/heavy-duty float switches
- Protruded fiberglass rudder shelf with stainless steel rudder tie bar
- Custom forward port side built-in shelf w/ stainless steel tool box & hinged folding 6" leaf w/vise.

## Electrical System

- (2) 21.5kw Caterpillar Generators with shock mounts, water lift mufflers and sound shields.
- U.L. 1426 listed tin coated wiring with insulation. Runs are cable tied every 6 inches and fastened to the hull or bulkheads every 12-16 inches with chafe protected guides.
- (2) 100 amp Glendinning retractable shore cords, bow & stern
- (2) isolation transformers
- Two 24 volt battery banks of heavy duty, 12 volt marine batteries (4) mounted in fire

retardant fiberglass boxes

- Mastervolt 75 amp 24V three-step battery charger
- Automatic battery paralleling system with switch at control console
- 230 volt AC 30 gallon electric water heater in engine room, 20 gallon electric water heater in forward bilge compartment
- GFCI protected outlets throughout the vessel

## Exterior Finish & Construction

---

Hatteras Yachts are built with solid fiberglass below the waterline and a closed cell foam core above utilizing resin-infusion which provides a more uniform hull thickness and an ideal resin to glass ratio. There is no organic material used in the structure of their yachts which is one of the reasons Hatteras Yachts are noted for their longevity, ease of maintenance and resale. Unlike most of the competition, Hatteras applies a painted finish in Alexseal Cloud White to their hull and topsides. Although this is a more expensive way of building, the finish is far superior to gelcoat and will hold its gloss for a much longer period of time with less maintenance.

- Blister resistant vinylester resin hull bottom
- Ablative Anti-Foulant Bottom Paint
- Polyurethane painted non skid decks with polymeric beads
- Resin infused solid fiberglass hull bottom
- Resin infused fiberglass stringers
- Steel laminated in stringers at key locations to bolt engine mounts
- Engine room bulkheads and decks of resin-infused composite construction using PVC foam core with layers of fiberglass laminate on each side
- Teak decks under hardtop on flybridge, aft deck, steps to swim platform & boat deck

## Additional

---

**Extensive spare parts inventory.**

## Exclusions

---

All artwork is excluded from this sale.

While every effort has been made to list all pertinent equipment aboard ENDLESS SUMMER, there are some personal belongings aboard. Prospective purchasers should assume any item not specifically mentioned herein will not convey at closing.

## Исключения

---



При продаже яхты исключаются личные вещи владельца.

## **Отказ от ответственности**

---

Компания предоставляет описание судна или яхты добросовестно, но не может гарантировать точность этой информации, а также не ручается за техническое состояние. Покупатель должен проинструктировать своих агентов или оценщиков исследовать представленную информацию более подробно, по собственному желанию. Продажа судна или яхты, изменение цены или снятие с продажи будет происходить без предварительного уведомления.

# ФОТОГРАФИИ

**Port Profile**



**Port Bow Profile**



**Flybridge Forward**



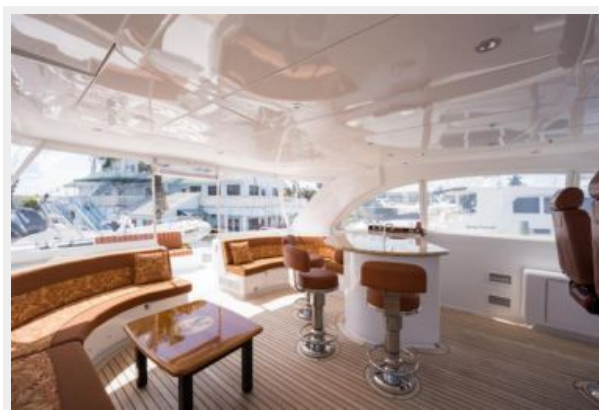
**Flybridge Starboard**



**Flybridge Port**



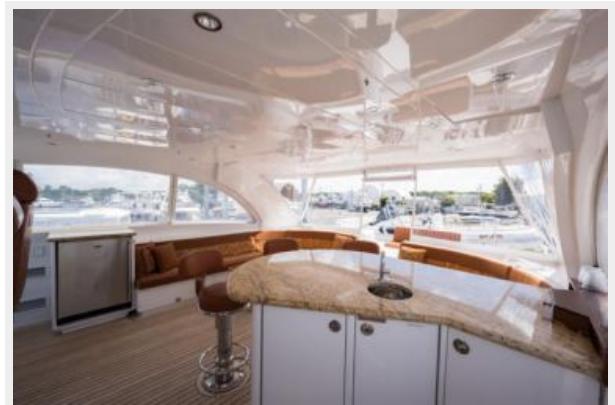
**Flybridge Aft**



**Flybridge Bar**



**Flybridge Bar**



**Flybridge Starboard Aft**



**Crown LTD Helm Chairs**



**Helm to Port**



**Helm**



**Helm**



**Helm**



**Boat Deck to Starboard**



**Boat Deck Settee**



**Boat Deck to Port**



**Steelhead Davit**



**Boat Deck Forward to Starboard**



**Boat Deck Forward to Port**



**Rendova Tender**



**Rendova Tender**



**Grill**



**Grill**



**Port Side Deck**



**Port Bow**



**Bow Aft**



**Starboard Bow**



**Bow Sun Pad**

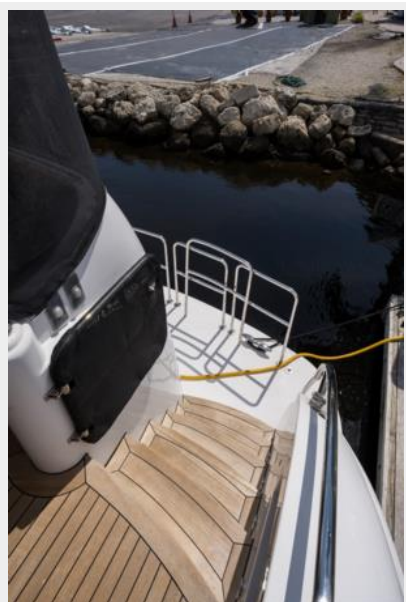


**Port Bow**

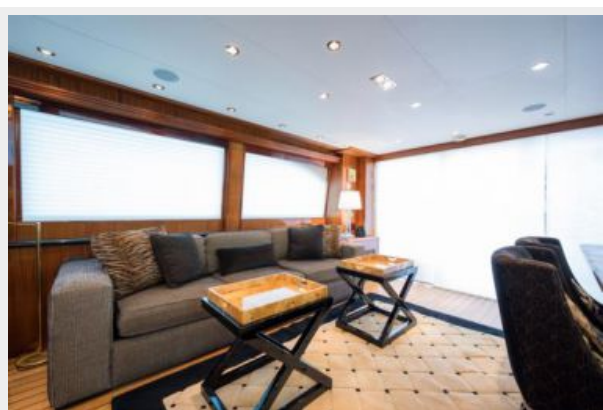
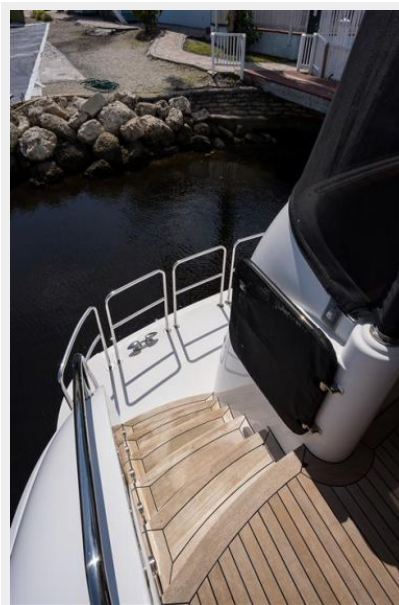


### Bow

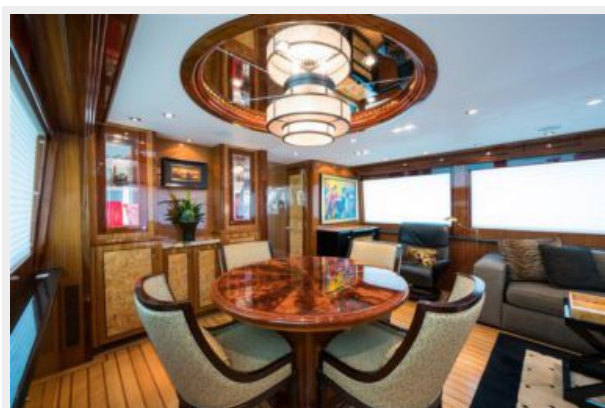


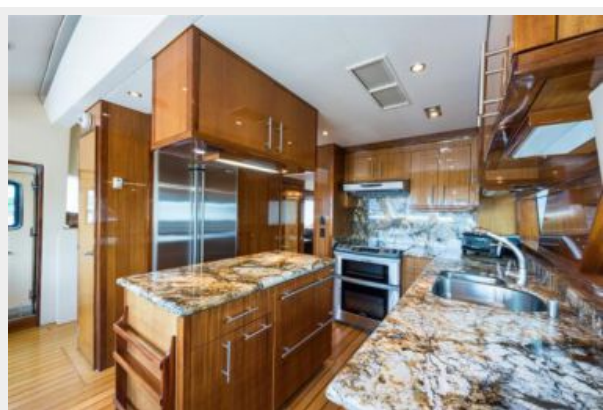






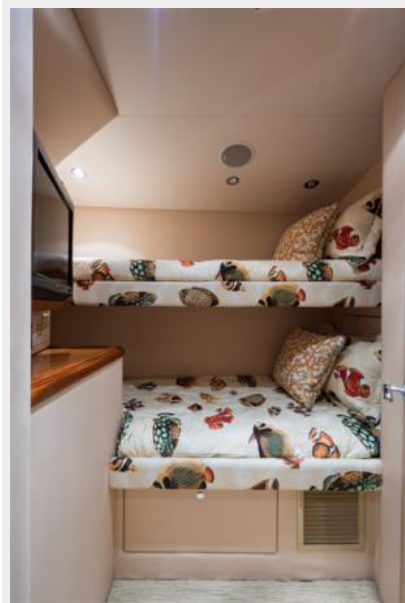






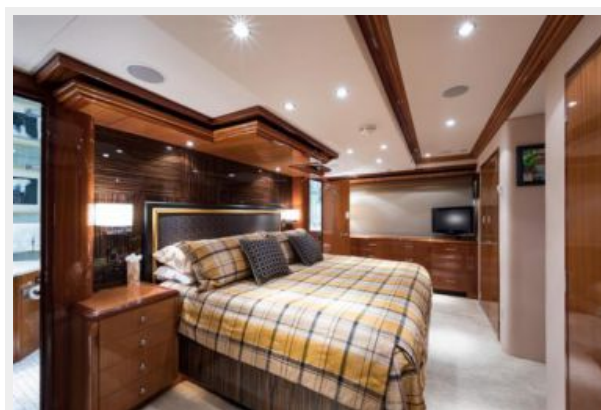
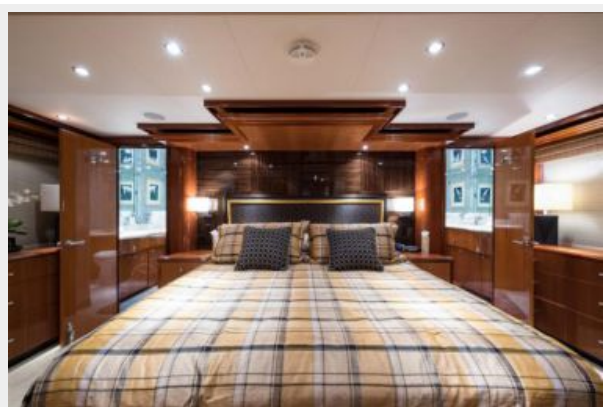


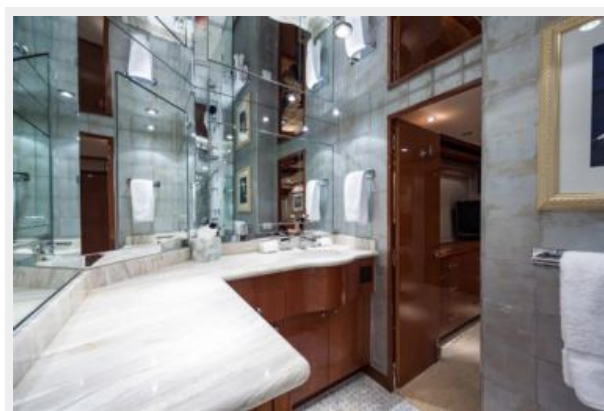


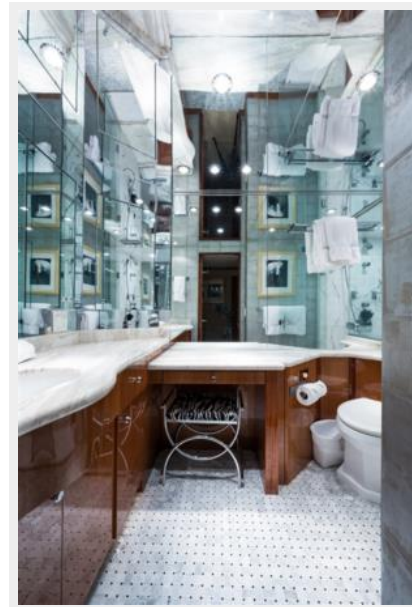


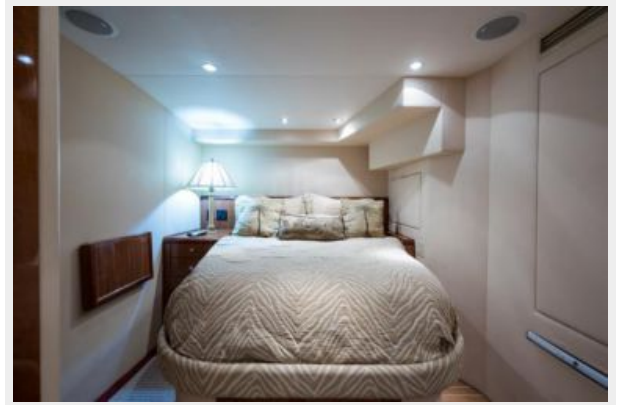








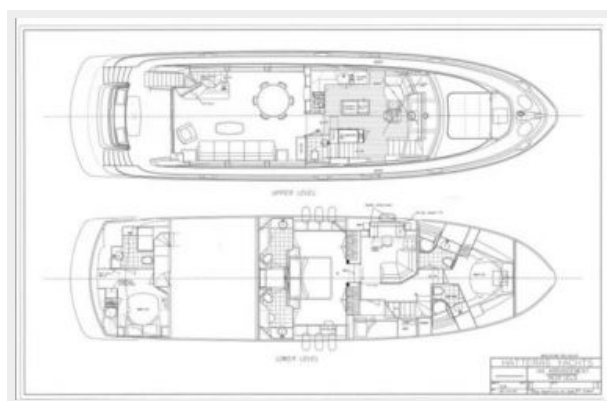








### General Arrangement



# КОНТАКТЫ

---

Андрей Шестаков (Andrey Shestakov) – ведущий яхтенный брокер отдела продаж яхт и судов компании Shestakov Yacht Sales Inc. Официальный представитель Shestakov Yacht Sales Inc. для русскоговорящих клиентов в центральном офисе компании в Майами/Форт Лодердейл/Флорида/США.

## Контактная информация

---

Email: [andrey@shestakovyachtsales.com](mailto:andrey@shestakovyachtsales.com)

Web: [shestakovyachtsales.com](http://shestakovyachtsales.com)

## Телефоны

---

Краснодарский край: **+7(918)465-66-44**

США, Майами, Флорида: **+1(954)274-4435**

## Время работы

---

Понедельник – Суббота: **9:00 - 21:00**  
EDT

Воскресенье: **Закрето**

## Адрес

---



Harbour Towne Marina, 850 NE 3rd St,  
STE 213, Dania, FL 33004