

TOUCH AND GO — CHERUBINI



Builder: CHERUBINI

Year Built: 2000

Model: SHELBY

Price: PRICE ON APPLICATION

Location: United States

LOA: 50' 0" (15.24m)

Beam: 14' 0" (4.27m)

Max Draft: 5' 0" (1.52m)

Cruise Speed: 9.00259386712 Kts. (10 MPH)

Max Speed: 15.99785261522 Kts. (18 MPH)

Our experienced yacht broker, Andrey Shestakov, will help you choose and buy a yacht that best suits your needs **Touch and Go — CHERUBINI** from our catalogue. Presently, at Shestakov Yacht Sales Inc., we have a wide variety of yachts available on our sale's list. We also work in close contact with all the big yacht manufacturers from all over the world.

If you would like to buy a yacht **Touch and Go — CHERUBINI** or would like help answering any questions concerning purchasing, selling or chartering a yacht, please call **+1(954)274-4435**

TABLE OF CONTENTS

TABLE OF CONTENTS	2
SPECIFICATIONS	6
Overview	6
Basic Information	6
Dimensions	6
Speed, Capacities and Weight	7
Accommodations	7
Hull and Deck Information	7
Engine Information	7
DETAILED INFORMATION	8
Accommodations	8
Pilothouse	9
Galley and Salon	10
Decks and Exterior	11
Engines and Mechanical	12
Exclusions	12
Total Power	12
Disclaimer	13
Exclusions	13
Disclaimer	13
PHOTOS	14
DSC_4576	14
Port Bow	14
Bow	14
Starboard Bow	14
Starboard Side	15
Starboard #2	15
Starboard Profile	15

Starboard Corner	15
Port Corner	15
Port Profile	15
Facing Aft	16
Pilothouse	16
Bridge Helm	16
Bow	16
2 - 1	16
2 - 12	16
Boat-June2007_003	17
2 - 15	17
DSC_4577	17
DSC_4579	17
DSC_4578	17
Anchor Windlass	17
Windlass #2	18
Cockpit	18
Cockpit To Starboard	18
Salon	18
Salon Office	18
Office #2	18
Salon To Starboard	19
Salon To Port	19
Dinette	19
Galley 1	19
Galley 2	19
Dishwasher	19
Washer Dryer	20
To Pilothouse	20

Pilothouse View	20
Convertible PH Seating	20
Helm	20
PH Overhead	20
Overhead AC DC Panels	21
To Staterooms	21
Master 1	21
Master 2	21
Master 3	21
Master Head Compartment	21
Master Head	22
Master Shower	22
Master Vanity	22
VIP Stateroom	22
VIP #2	22
Guest Head	22
DSC_0029	23
DSC_0022	23
Salon Engine Access Panels	23
Salon Access 2	23
DSC_0030	23
DSC_0031	23
DSC_0032	24
DSC_0024	24
DSC_0025	24
DSC_0026	24
DSC_0027	24
DSC_0028	24
DSC_0033	25

DSC_0035	25
DSC_0036	25
2 - 1	25
2 - 12	25
2 - 15	25
Boat-June2007_003	26
DSC_0022	26
DSC_0024	26
DSC_0025	26
DSC_0026	26
DSC_0027	26
DSC_0028	27
DSC_0029	27
DSC_0030	27
DSC_0031	27
DSC_0032	27
DSC_0033	27
DSC_0034	28
DSC_0035	28
DSC_0036	28
DSC_4576	28
DSC_4577	28
DSC_4578	28
DSC_4579	29
CONTACTS	30
Contact details	30
Telephones	30
Office hours	30
Address	30

SPECIFICATIONS

Overview

Price Reduction!

Custom built to exacting standards with a lineage that traces to the renowned Hans Christian sailing yachts and the Cherubini ketches and schooners, the **Cherubini Independence** offers a solid and extremely rugged design with the dramatic flair of a North Sea workboat coupled with great craftsmanship and the beauty of a luxury cruiser. This is one handsome vessel!

A true Pilothouse design built by a company with generations of boat building experience, each **Cherubini Independence** was custom built for their original owners so no two are exactly the same. This boat was fitted with extra fuel capacity and has upgraded aluminum framed windows and secure pilothouse doors for example, along with a whirlpool tub and custom cabinetry. The Pilothouse has the look and feel of a true ocean-going vessel capable of safely handling whatever you encounter!

Powered by twin Cummins 6BTA diesels rated at 370 HP each, her equipment list is quite long, 10kW Northern Lights Generator, Wesmar Stabilizers, 24 VDC Bow Thruster, 400 GPD Watermaker, Spare Propellers and Shaft for starters.

She has benefitted from knowledgeable owners who have cruised the east coast of the US and the Caribbean in her regularly. She sits ready to take you and your crew on new adventures!

Basic Information

Category: SHELBY

Sub Category: Pilothouse

Model Year: 2000

Year Built: 2000

Country: United States

Vessel Top: Bimini Top

Cockpit: Yes

Dimensions

LOA: 50' 0" (15.24m)

LWL: 40' 0" (12.19m)

Beam: 14' 0" (4.27m)

Max Draft: 5' 0" (1.52m)

Speed, Capacities and Weight

Cruise Speed: 9.00259386712 Kts. (10 MPH)

Cruise Speed RPM: 1800 Kts.

Max Speed: 15.99785261522 Kts. (18 MPH)

Max Speed RPM: 3000 Kts.

Displacement: 40000 Pounds

Water Capacity: 350 Gallons

Fuel Capacity: 1050 Gallons

Accommodations

Total Cabins: 2

Total Heads: 2

Hull and Deck Information

Hull Material: Fiberglass

Deck Material: Fiberglass

Hull Finish: Plastic

Engine Information

Engines: 2

Manufacturer: Cummins

Model: 6BTA

Engine Type: Inboard

Fuel Type: Diesel

DETAILED INFORMATION

Accommodations

Custom built to exacting standards and designed to provide safe and comfortable extended cruising, **Touch and Go** is a Two Stateroom Two Head Raised Pilothouse design that is well planned and comfortable.

The **Master Stateroom** is forward and features a centerline Island Queen berth and an extensive built-in cabinet with drawer storage to starboard. Portside cabinetry includes shelf space, concealed laptop computer drawer and space for the TV, with a large hanging locker behind.

The **Master Head** has a walk-in shower, Vacu-Flush head, solid-surface countertops and sink with excellent storage with a medicine cabinet, under sink cabinets and a portside storage cabinet.

The **Guest Stateroom** is aft of the Master and to port and features twin single berths with a cabinet between as well as a hanging locker and storage. Opposite the Guest Stateroom to starboard is the Guest Head that includes a whirlpool bathtub and shower combination, solid-surface countertops and shower surround, Vacu-flush head, and ample cabinet storage.

There are also additional accommodations in the **Raised Pilothouse**, a three-wide settee along the aft wall of the Pilothouse facing forward easily converts into a full size sea berth with full lookout capability whether underway or at anchor. The Pilothouse features a fixed lunch table to port as well as a foldable chart table, and is centered around a prominent Stidd 500 Captain's chair.

Master Stateroom

- Centerline Island Queen Berth
- Custom Mattress
- Built-in Cabinetry
- Port and Starboard Bookshelves
- Hanging Locker
- Computer Storage
- Teak and Holly Sole

Master Head

- Walk In Shower
- Solid Surface Countertop and Sink Basin
- Medicine Cabinet
- Under Sink Storage
- Portside Storage
- Vacu-Flush Head

Guest Stateroom

- Twin Single Berths
- Custom Mattresses
- Hanging Locker
- Overhead Shelf and Lockers
- Teak and Holly Sole

Guest Head

- Whirlpool Bathtub / Shower
- Solid Surface Counters, Sink Basin, and Shower Surround
- Tile Flooring
- Medicine Cabinet
- Storage Cabinets Under Sink, Above Tub
- Vacu-Flush Head

Pilothouse

The **Raised Pilothouse** is prominent center of the boat's design. Well planned and executed, it offers excellent visibility, comfortable and accommodating seating, and is an awesome place from which to see the world!

- Forward Facing Settee - Converts to Full Size Sea Berth
- Center Stidd 500 Captain's Chair
- Fixed Lunch Table to Port
- Foldable Chart Table
- Custom Overhead AC and DC Panels
- Well Designed Helm Station
- Custom Aluminum Sealed Access Doors Port and Starboard
- Custom Aluminum Pilothouse Windows Throughout
- Beautiful Teak Woodwork Throughout
- Teak and Holly Sole

Pilothouse Electronics and Navigation

- Simrad CX-44 Chartplotter
- Simrad CR 50 Chartplotter w Integral DGPS and Split Screen Display
- Simrad 4kW 48 Mile Radar
- Simrad IS 15 Depth - Wind - Speed with Repeater in Master Stateroom
- Simrad Robertson AP 20 Autopilot
- ICOM M127 VHF Radio
- Aft Facing Camera Monitor
- Digital Compass
- Large Ritchie Magnetic Compass

- Floscan Fuel Consumption Monitors
- Wesmar Stabilizer Controls
- Bennett Trim Tabs
- Sidepower 24 VDC Bow Thruster
- Kobelt Single Lever Controls
- Tank Monitor System
- Racor Filter Monitor
- EPIRB

Galley and Salon

Aft of the Pilothouse and down a few steps the **Galley and Salon** are on a single level and stretch the full beam of the boat. The U-Shaped Galley is forward of the Salon and is portside, framed beautiful cabinetry with blue Mahogany Granite counters.

The Salon features a large and comfortable wrap around U-Shaped Settee to port with centered Salon Table that serves as a comfortable Dinette with seating for four (or more). To starboard in the salon are two seating areas, one facing midships and the portside settee, the other facing forward and the built-in Computer / Entertainment Center.

Forward of the Computer / Entertainment Center, opposite of the Galley is a built-in storage cabinet with louvered doors and lots of storage. Here is also located a combination washer-dryer unit.

Galley

- Norcold Full Size Refrigerator / Freezer 12VDC - 120VAC - Propane - NEW 2013
- Force 10 Three Burner Propane Stovetop with Oven - Propane
- Frigidaire Dishwasher
- GE Microwave Oven
- Splendide Combination Washer Dryer
- Beautiful Teak Cabinetry
- Granite Countertops
- Teak and Holly Sole Throughout

Salon

- Full Beam Spaciousness
- Portside U-Shaped Settee
- Large Built-In Salon / Dining Table
- Portside Built-In Settee
- Portside Forward Seating
- Entertainment Center
- Teak and Holly Sole

Decks and Exterior

The hull of the Cherubini Independence is solid hand laid fiberglass with Balteck coring used in the topsides beginning six inches above the waterline. The hull and decks are painted with Awlgrip, the hull Ice Blue and the deck white.

The aft **Cockpit** is under fiberglass cover with teak decking and a storage box/seat to port. A large transom door opens to a full beam fiberglass swim platform. Access to the main Salon is by a two piece Aluminum framed Dutch-style door. A Lewmar windlass and capstan is to starboard.

The **Bridge Deck** is accessible on both sides by means of molded fiberglass steps from the Pilothouse and features a full centerline helm with great visibility, faced by three matching Stidd Helm chairs. Covered by a bimini top with matching helm weather cover, the bridge decking is fiberglass and is framed by 1 1/2" aluminum railing with screens. A Yacht Davit Systems davit is aft of the bridge, supporting access to the tender which sits in a cradle above the cockpit.

The **Foredeck**, also accessible from either side of the Pilothouse is framed by teak cap boards and anodized aluminum railing. A fiberglass bowsprit supports a Lighthouse anchor windlass and dual anchor cradles.

Cockpit

- Teak Cockpit Decking
- Transom Door
- Full Beam Swim Platform
- Cockpit Seating with Storage Underneath
- Cockpit Storage Lazarette
- Lewmar Transom Windlass
- Fiberglass Cockpit Hard Top

Bridge Deck

- Centerline Helm
- Three Stidd Captain's Chairs
- Fiberglass Sole
- Bimini Top
- Bridge Helm Weather Cover
- Bridge Deck Storage Unit
- Molded Access Steps
- Yacht Davit Systems Davit - 800# Capacity
- Dinghy Cradle

Bridge Electronics

- Simrad DS 40Plotter
- Simrad AP 22 Autopilot

- Simrad IS 15 Wind Repeater
- ICom M422 VHF Radio

Foredeck

- Access from Port or Starboard Side
- Self Bailing Deck
- Fiberglass Bowsprit
- Dual Anchor Cradles
- Lighthouse Anchor Windlass
- Anchor Rode Hawse
- Dock Line Hawses

Engines and Mechanical

- Twin Cummins 6BTA Diesels - 370 HP Each - 2600 Hours
- 10 kW Northern Lights Generator - 3350 Hours - Sound Shield
- Dual Racor Filters - Engines and Generator
- Aquadrive Anti-Vibration Engine Mounts
- Sidepower 24VDC Bow Thruster
- Wesmar Stabilizers
- Bennett Trim Tabs
- Walker AirSeps
- Oil XChanger Oil Change System
- Offshore Marine 400 GPD Watermaker (Currently Pickled)
- Tank Tender Monitoring System
- Three Ocean Marine Reverse Cycle Heat and AC Units
- Digital Temperature Controls
- Guest 20 A Charging System
- Statpower ProSine 3.0 3000 Watt Inverter
- Hynautic Steering
- Spare Propeller Shaft (1)
- Set of Spare 4 Blade Bronze Propellers (2)
- Fuel Tanks Cleaned and Inspected 2015

Exclusions

- Satellite TV System Will Remain, Owner Will Remove TV Receivers
- Owner's Personal Items Will be Removed

Total Power

740.0 hp

Disclaimer

The Company offers the details of this vessel in good faith but cannot guarantee or warrant the accuracy of this information nor warrant the condition of the vessel. A buyer should instruct his agents, or his surveyors, to investigate such details as the buyer desires validated. This vessel is offered subject to prior sale, price change, or withdrawal without notice.

Exclusions

Owner's personal belongings.

Disclaimer

The Company offers the details of this vessel or yacht in good faith but cannot guarantee or warrant the accuracy of this information nor warrant the condition of the vessel. A buyer should instruct his representatives, agents, or his surveyors, to investigate such details as the buyer desires validated. This vessel or yacht is offered subject to prior sale, price change, or withdrawal without notice.

PHOTOS

DSC_4576



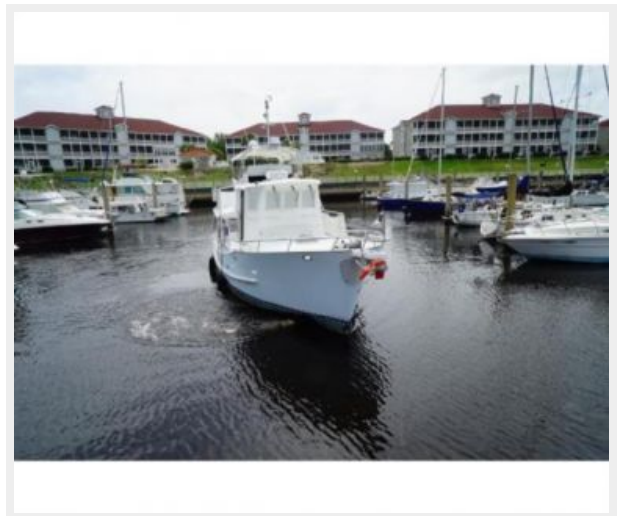
Port Bow



Bow



Starboard Bow



Starboard Side



Starboard #2



Starboard Profile



Starboard Corner



Port Corner



Port Profile



Facing Aft



Pilothouse



Bridge Helm



Bow



2 - 1



2 - 12



Boat-June2007_003



2 - 15



DSC_4577



DSC_4579



DSC_4578



Anchor Windlass



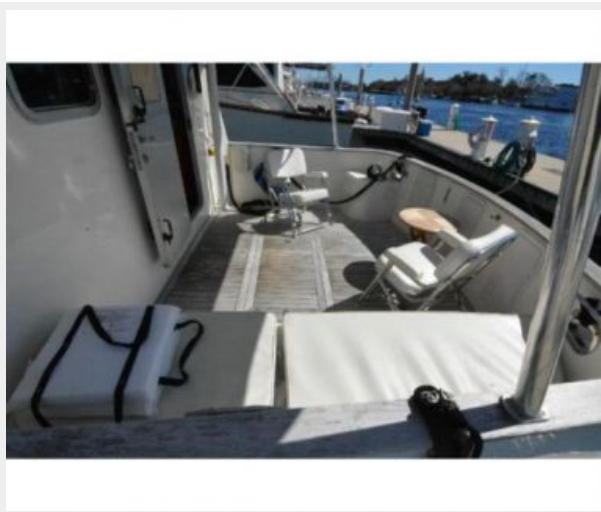
Windlass #2



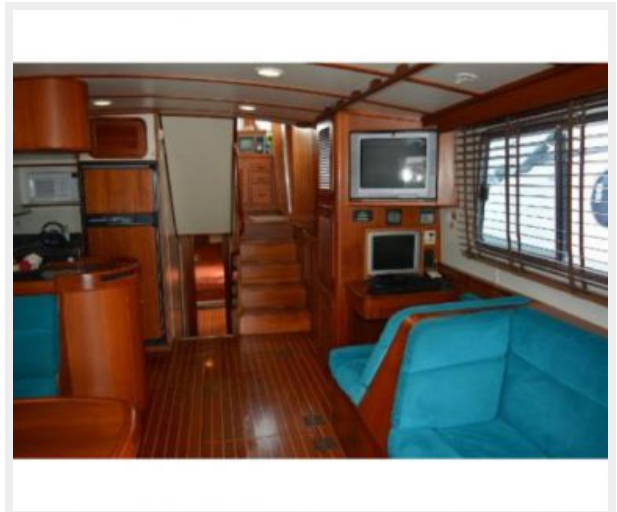
Cockpit



Cockpit To Starboard



Salon



Salon Office



Office #2



Salon To Starboard



Salon To Port



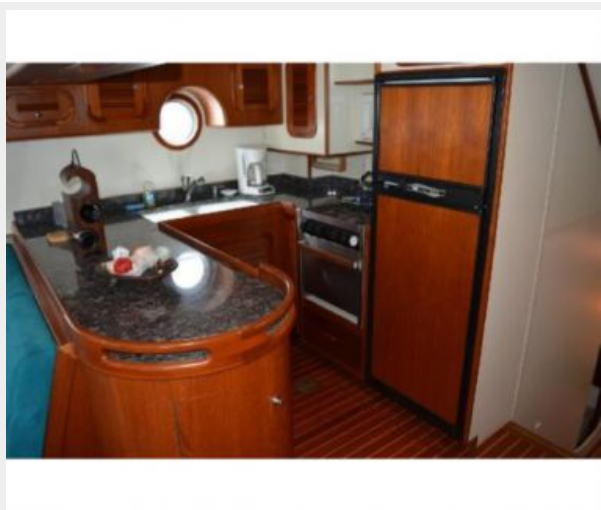
Dinette



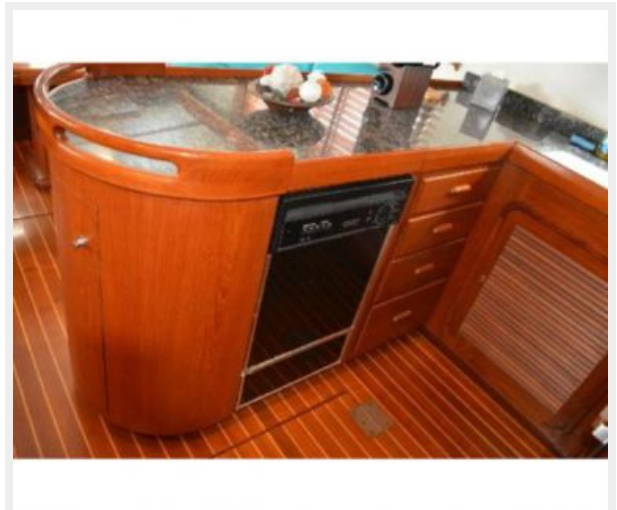
Galley 1



Galley 2



Dishwasher



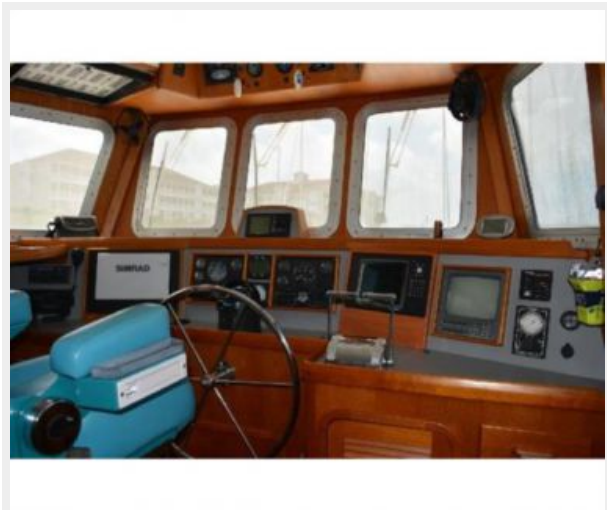
Washer Dryer



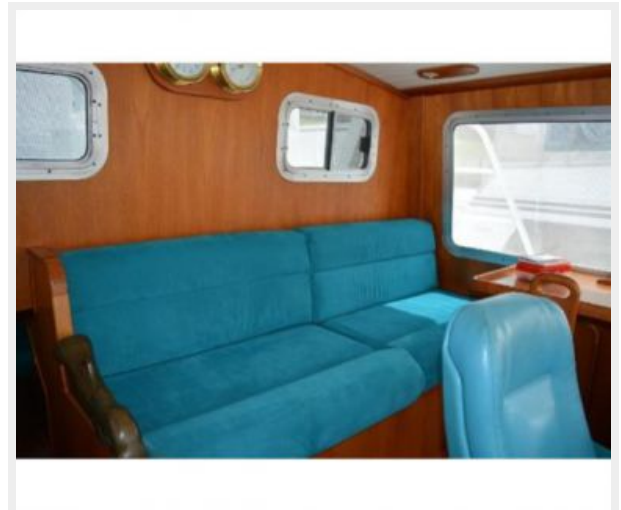
To Pilothouse



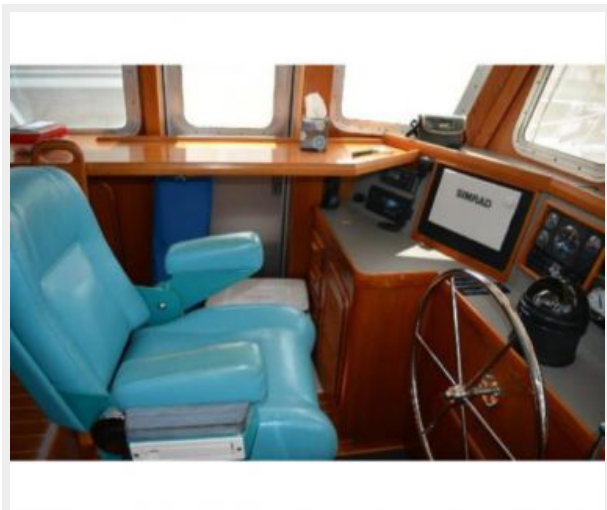
Pilothouse View



Convertible PH Seating



Helm



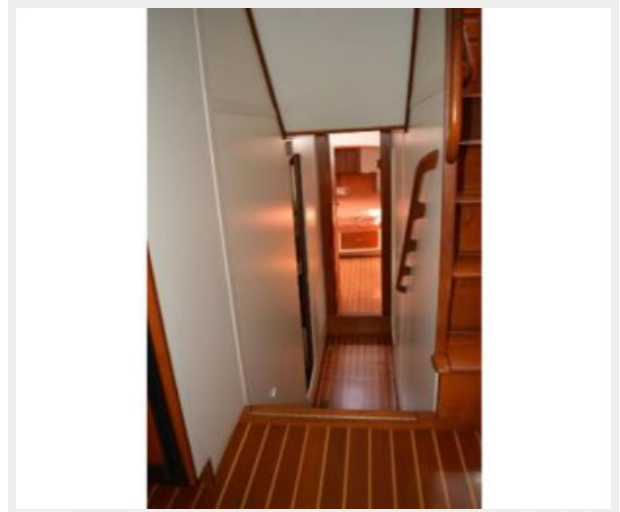
PH Overhead



Overhead AC DC Panels



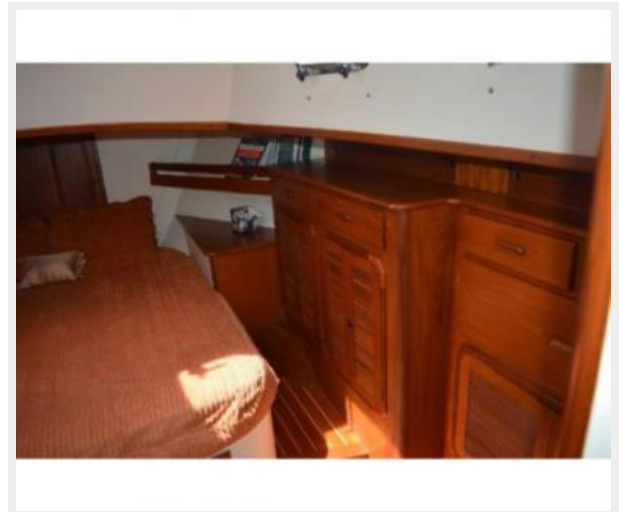
To Staterooms



Master 1



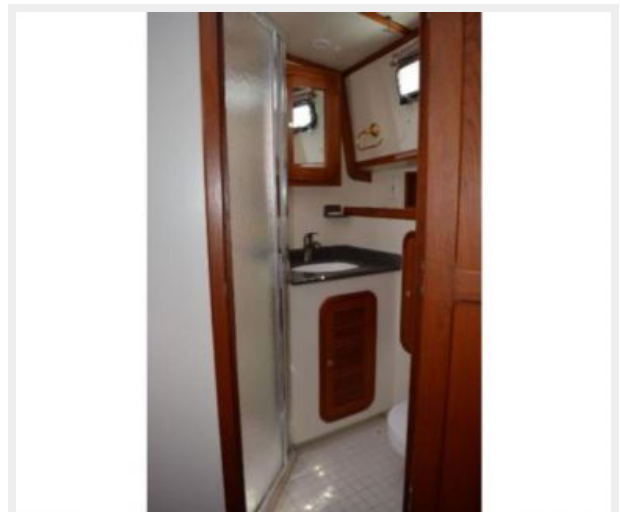
Master 2



Master 3



Master Head Compartment



Master Head



Master Shower



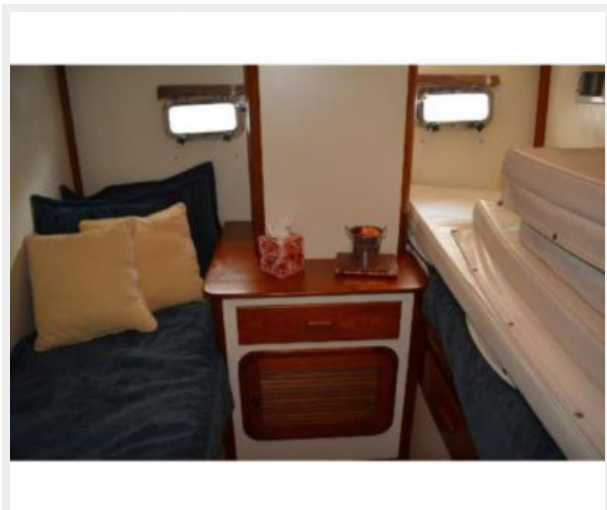
Master Vanity



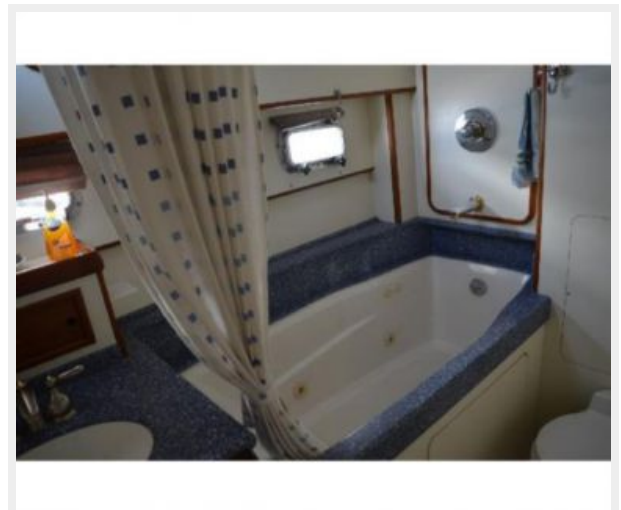
VIP Stateroom



VIP #2



Guest Head



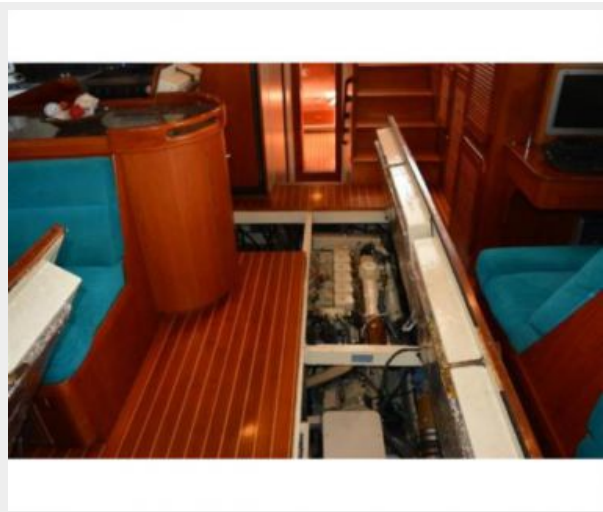
DSC_0029



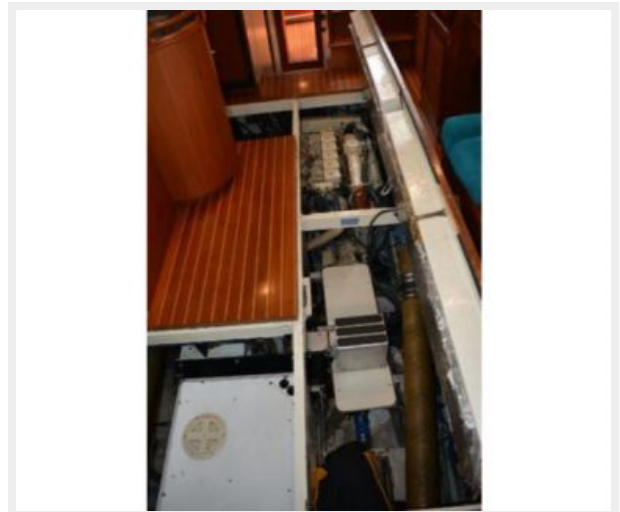
DSC_0022



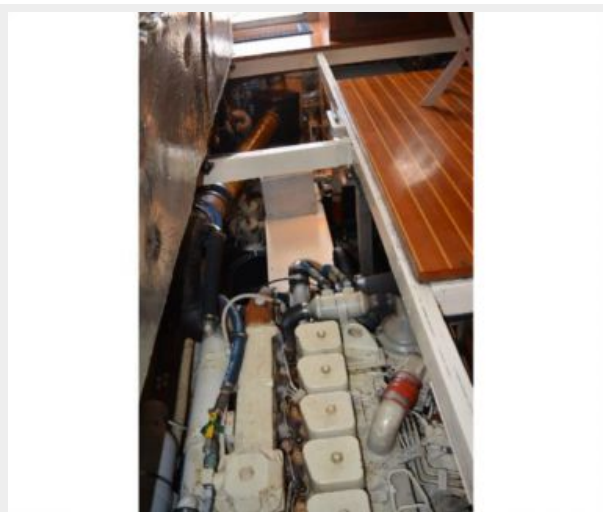
Salon Engine Access Panels



Salon Access 2



DSC_0030



DSC_0031



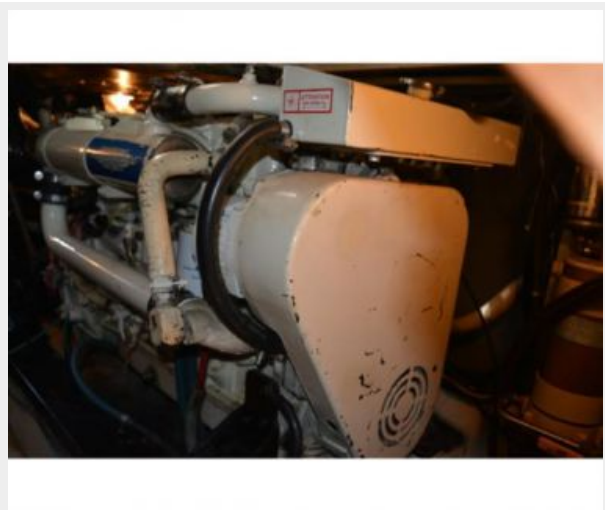
DSC_0032



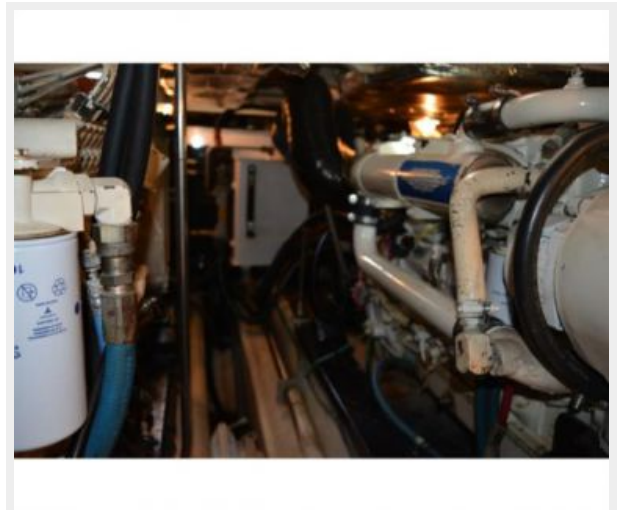
DSC_0024



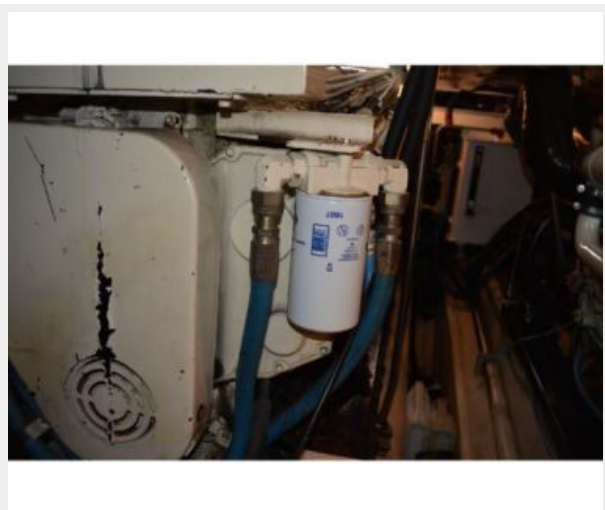
DSC_0025



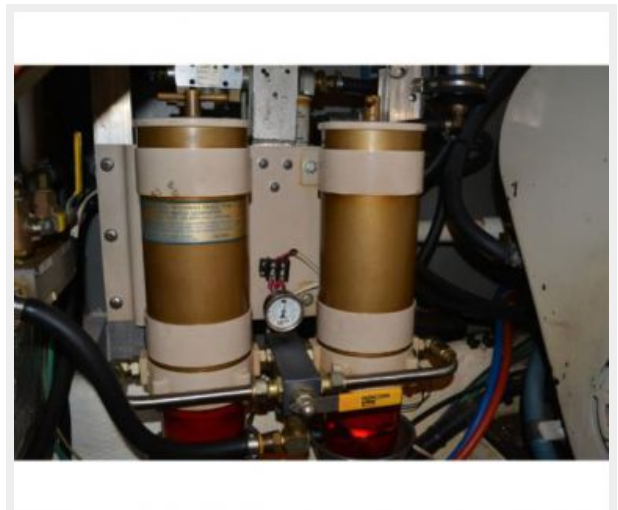
DSC_0026



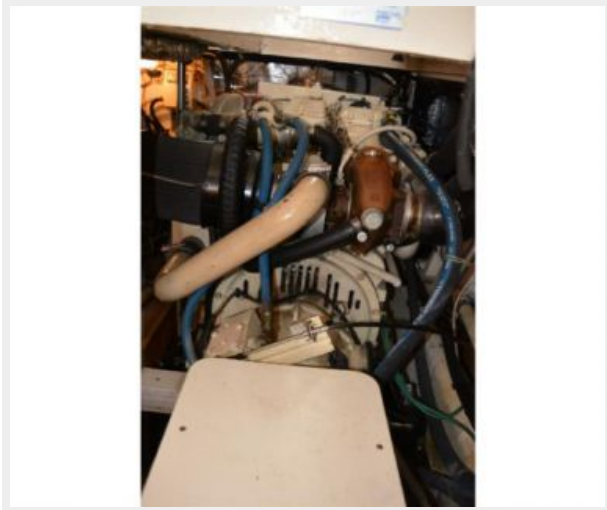
DSC_0027



DSC_0028



DSC_0033



DSC_0035



DSC_0036



2 - 1



2 - 12



2 - 15



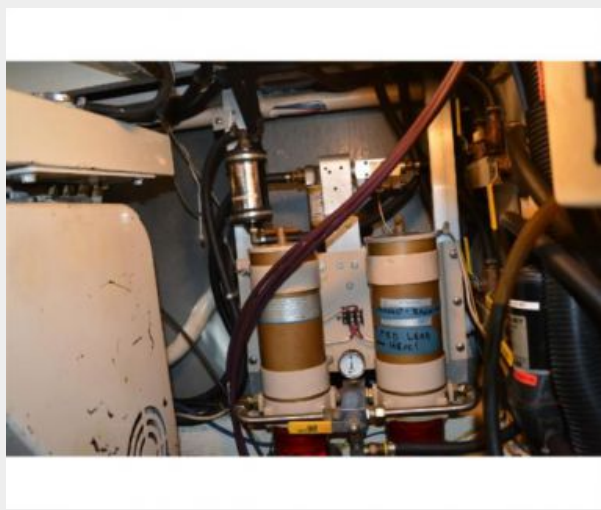
Boat-June2007_003



DSC_0022



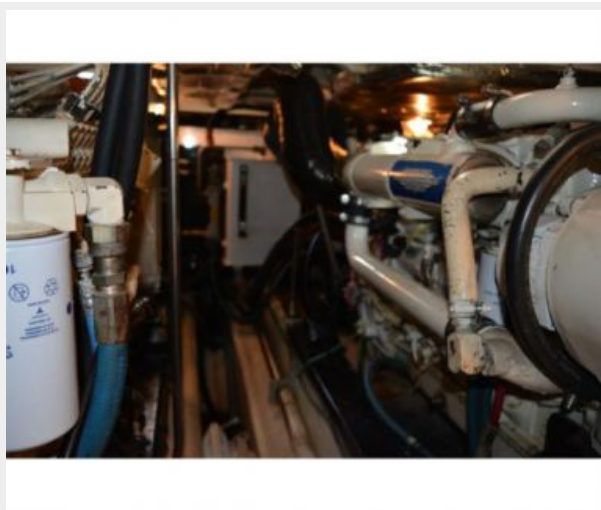
DSC_0024



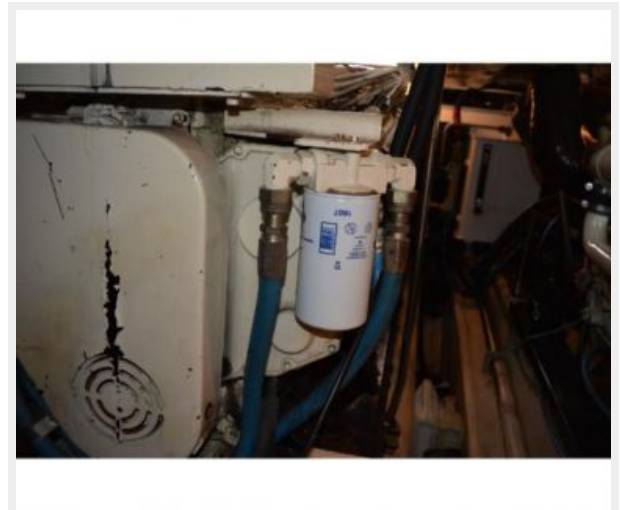
DSC_0025



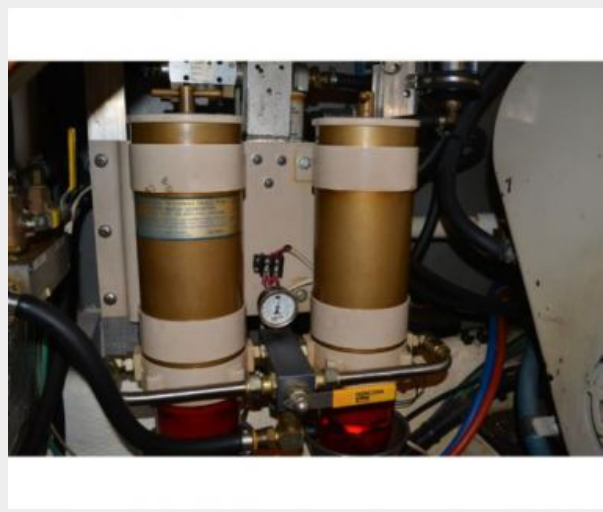
DSC_0026



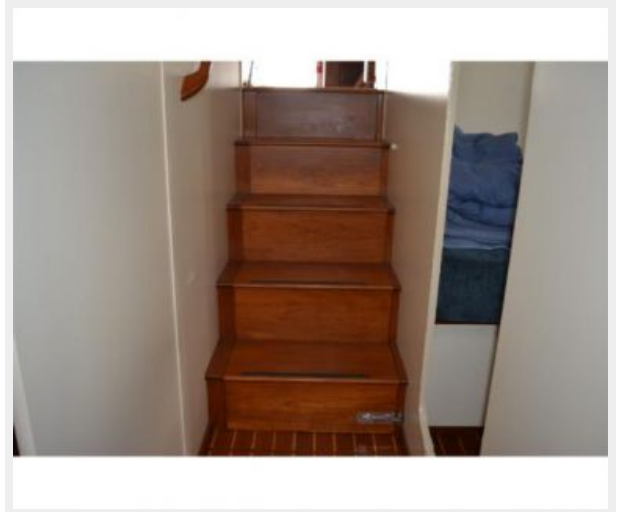
DSC_0027



DSC_0028



DSC_0029



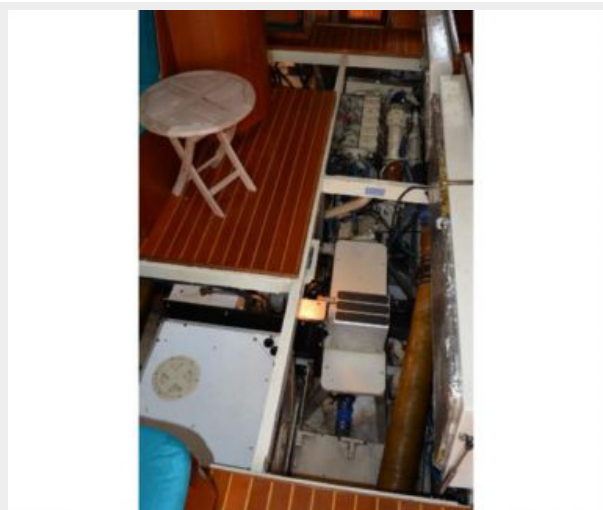
DSC_0030



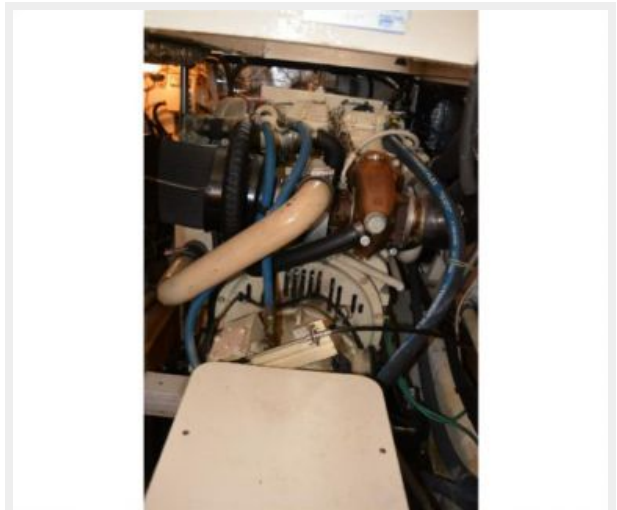
DSC_0031



DSC_0032



DSC_0033



DSC_0034



DSC_0035



DSC_0036



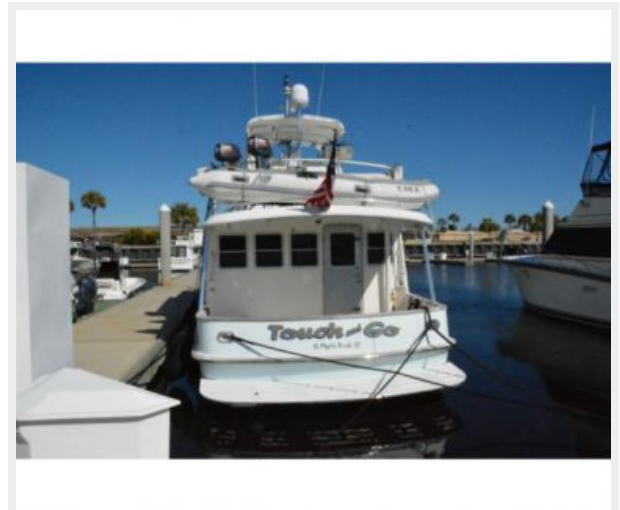
DSC_4576



DSC_4577



DSC_4578



DSC_4579



CONTACTS

Andrey Shestakov, leading yacht broker of the sales department of Shestakov Yacht Sales Inc. Shestakov Yacht Sales Inc., the official representative of the Miami/Fort Lauderdale FL headquarters.

Contact details

Email: andrey@shestakovyachtsales.com

Web: shestakovyachtsales.com/en/

Telephones

USA: +1(954)274-4435

Office hours

Monday – Saturday: **9:00 - 21:00** EDT

Sunday: **closed**

Address



Harbour Towne Marina, 850 NE 3rd St,
STE 213, Dania, FL 33004