

EMERALD LADY — HATTERAS



Builder: HATTERAS

Year Built: 1976

Model: Motor Yacht

Price: PRICE ON APPLICATION

Location: United States

LOA: 58' (17.68mm)

Beam: 17.75

Max Draft: 5' 10" (1.78mm)

Our experienced yacht broker, Andrey Shestakov, will help you choose and buy a yacht that best suits your needs **EMERALD LADY — HATTERAS** from our catalogue. Presently, at Shestakov Yacht Sales Inc., we have a wide variety of yachts available on our sale's list. We also work in close contact with all the big yacht manufacturers from all over the world.

If you would like to buy a yacht **EMERALD LADY — HATTERAS** or would like help answering any questions concerning purchasing, selling or chartering a yacht, please call **+1(954)274-4435**

TABLE OF CONTENTS

TABLE OF CONTENTS	2
SPECIFICATIONS	3
Overview	3
Basic Information	5
Dimensions	5
Speed, Capacities and Weight	5
Accommodations	5
Hull and Deck Information	5
Engine Information	5
PHOTOS	6
CONTACTS	19
Contact details	19
Telephones	19
Office hours	19
Address	19

SPECIFICATIONS

Overview

EMERALD LADY! HATTERAS LRC 58 1976

A heavily built yacht designed for the rigors of extended passages. The 58 LRC rides on a round bilged displacement hull with hard aft chines for roll stability, wide 17'11" beam, and a deep prop-protecting keel. Her spacious three state room teak interior is arranged with the walk-in engine room dividing the full-beam master stateroom from the guest staterooms forward. The pilothouse—with bench seat, port/starboard deck doors, and fly bridge stairs—is fully enclosed and private. Aft of the pilothouse is large U-shaped galley which is separated from the salon by a breakfast bar. A salon staircase aft and to port leads down to the master stateroom and engine room. The covered aft deck of the 58 LRC is large enough for comfortable entertaining and the side decks are sheltered by bridge overhangs.

EMERALD LADY has benefited from continuous maintenance, upgrades and recently a thorough refit. All Ship's Surface are renewed with Awlgrip paint. All electronics have been replaced with new technology. The electrical system has been redone, replacing the 32 volt system with 24volts including the A/C. Lighting has also being replaced with LED.

GALLEY

- Whirlpool refrigerator/freezer
- GE Microwave Oven
- Large Porcelain Double Sink
- 4 Burner Frigidaire Electric Stove
- Edgestar Ice maker

ELECTRONICS

Lower Helm

- Simrad AP28 Autopilot
- 2 Garmin 7212 Chartplotters/Radar
- Icom IC-M604 VHF
- Pioneer Radio
- 10" Danfroth Compass
- Wesmar Bow Thruster Control
- Naiad Stabilizer Control
- Loud Hailer
- Tank Tender

Upper Helm

- Simrad AP24 Autopilot
- Garmin GPS Map 741 XS Chartplotter
- Icom IC-504 VHF
- Danfroth 10" Compass
- ACR Epirb
- Wesmar Bow Thruster Control

ELECTRICAL SYSTEMS

- 20kw Onan Generator in Sound Shield
- 16kw Onan Generator
- 220V AC Electrical System
- 12V/24V DC Electrical System
- 2 Pronautic 24 Volt 30p Automatic Battery Chargers
- Promarine 24 Volt Battery Charger
- AIMS Power 2500 Watts Inverter
- Charles ISO Boost 50 SSt Transformer

MECHANICAL SYSTEMS

- Twin Detroit Diesel Model 4-71N 160hp
- Allison 2.96:1 Transmissions
- Fresh Water Cooling
- NAIAD 25111 24volt Stabilizers (rebuilt)
- Sea Recovery SRC 400 Watermaker
- Dripless Packing Glands
- Automatic CO2 Fire Contro System
- 5 Cruisair Reverse Cycle A/C Heat Pump
- Wesmar Bow Thruster
- Tank Tender Monitoring System For All Water and Fuel Tanks
- Vacuflush Head System

DECK & HULL

- Bow and Stern Wash Down
- Danforth Anchor
- Rocna Anchor
- 400' Chain Anchor
- Ideal Electric Windlass
- Electric Dinghy Davit
- 6 Person Liferaft
- Zodiac Pro 420 /1CC Dinghy with 25HP Yamaha Outboard

Basic Information

Category: Motor Yacht

Model Year: 1976

Year Built: 1976

Country: United States

Dimensions

LOA: 58' (17.68mm)

LWL: 52' (15.85mm)

Beam: 17.75

Max Draft: 5' 10" (1.78mm)

Speed, Capacities and Weight

Water Capacity: 500 Gallons

Holding Tank: 200 Gal Gallons

Fuel Capacity: 2390 Gal Gallons

Accommodations

Total Cabins: 4

Total Berths: 4

Total Heads: 3

Hull and Deck Information

Hull Material: Fiberglass

Engine Information

Engines: 2

Manufacturer: Detroit Diesel

Engine Type: Inboard

Fuel Type: Diesel

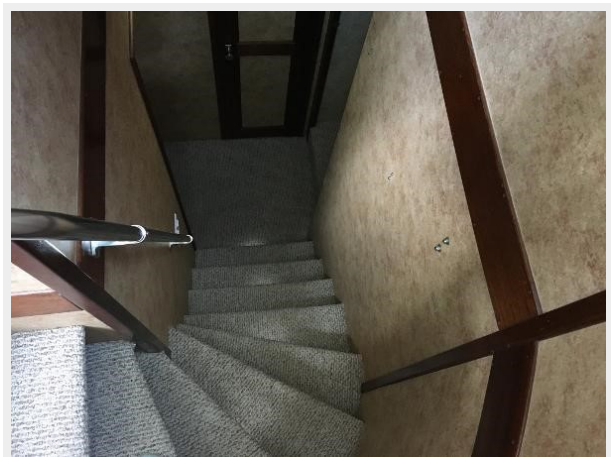
PHOTOS

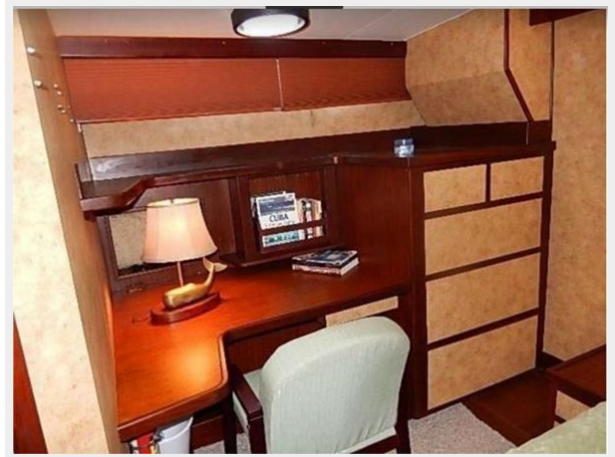


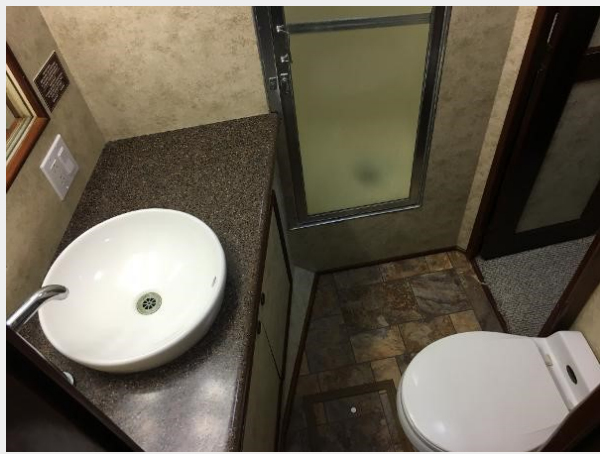




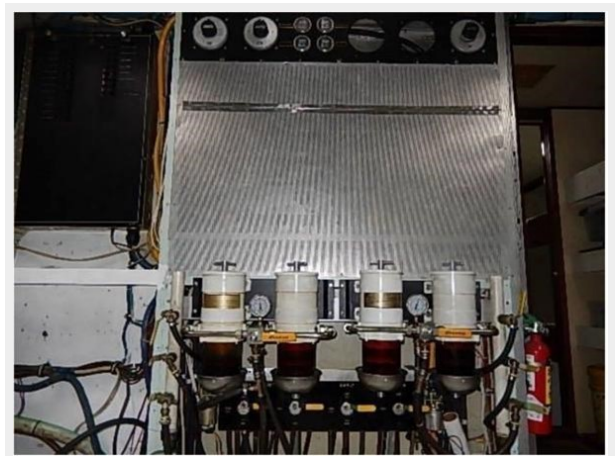
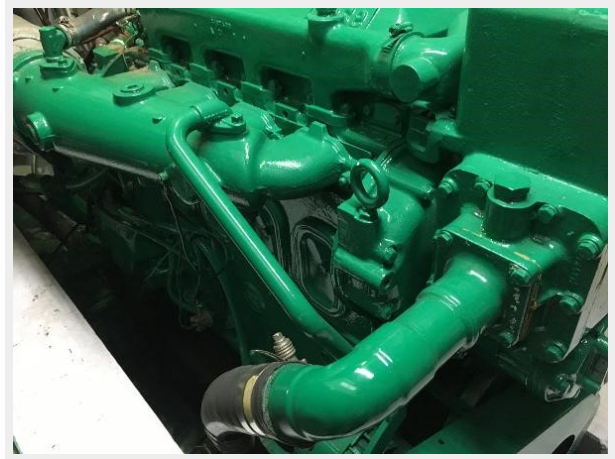


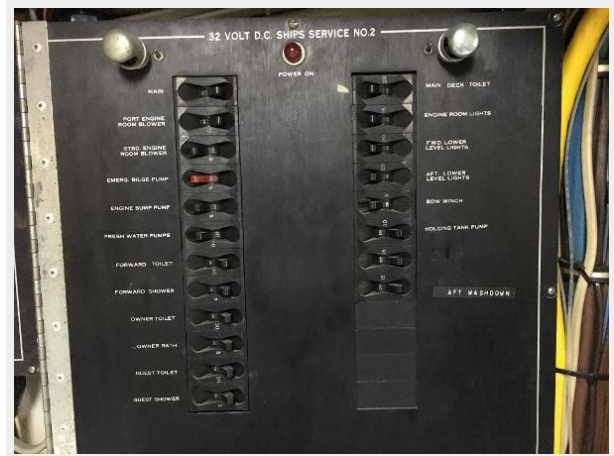




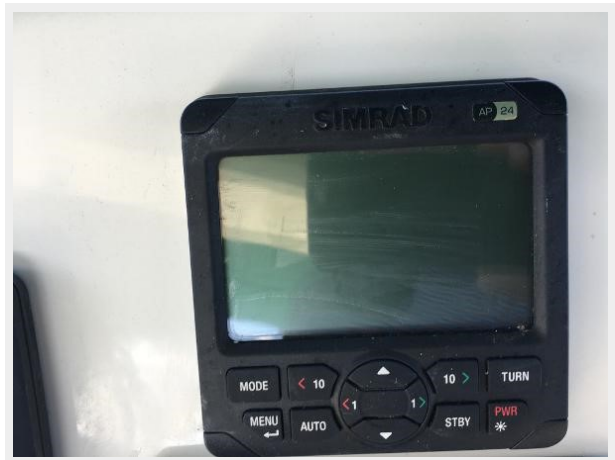














CONTACTS

Andrey Shestakov, leading yacht broker of the sales department of Shestakov Yacht Sales Inc. Shestakov Yacht Sales Inc., the official representative of the Miami/Fort Lauderdale FL headquarters.

Contact details

Email: andrey@shestakovyachtsales.com

Web: shestakovyachtsales.com/en/

Telephones

USA: +1(954)274-4435

Office hours

Monday – Saturday: **9:00 - 21:00** EDT

Sunday: **closed**

Address



Harbour Towne Marina, 850 NE 3rd St,
STE 213, Dania, FL 33004