

CHARISMA — HATTERAS



Судостроитель: HATTERAS

Год постройки: 1978

Модель: Моторная яхта

Цена: **ЦЕНА ЯХТЫ ПО ЗАПРОСУ**

Местонахождение: United States

Длина общая: 58' 0" (17.68m)

Ширина: 15' 10" (4.83m)

Макс. осадка: 4' 9" (1.45m)

Крейс. скорость: 10 Kts. (12 MPH)

Макс. скорость: 20 Kts. (23 MPH)

Купить **Charisma — HATTERAS** а также выбрать подходящую вам яхту из нашего каталога яхт вам поможет опытный яхтенный брокер Андрей Шестаков. На сегодняшний день компания **Shestakov Yacht Sales Inc.** имеет большое количество яхт в собственном списке продаж, а также тесно сотрудничает со всеми крупными яхтенными производителями по всему миру.

Для того чтобы купить яхту **Charisma — HATTERAS** а также проконсультироваться по любому вопросу связанному с покупкой, продажей, чартером яхт позвоните по телефону **+7(918)465-66-44**.

ОГЛАВЛЕНИЕ

ОГЛАВЛЕНИЕ	2
ХАРАКТЕРИСТИКИ	6
Обзор	6
Основная информация	6
Размеры	6
Скорость, вместимость и масса	7
Размещение	7
Корпус и палуба	7
Информация о двигателе	7
ПОДРОБНОЕ ОПИСАНИЕ	8
Accommodations	8
Galley	9
Electronics and Navigation	9
Pilothouse/Bridge/Foredecks	10
Engines and Mechanical	11
Additional Information	12
Disclaimer	12
Исключения	13
Отказ от ответственности	13
ФОТОГРАФИИ	14
27059000_20190423063558521_1_LARGE	14
37059000_20190423063546646_1_LARGE	14
47059000_20190423063517076_1_LARGE	14
57059000_20190423063514740_1_LARGE	14
67059000_20190423063511617_1_LARGE	15
77059000_20190423063515546_1_LARGE	15
87059000_20190423063513911_1_LARGE	15
97059000_20190423063513152_1_LARGE	15

107059000_20190423063516303_1_LARGE	15
117059000_20190423063547511_1_LARGE	15
127059000_20190423063549362_1_LARGE	16
137059000_20190423063529317_1_LARGE	16
147059000_20190423063450884_1_LARGE	16
157059000_20190423063548429_1_LARGE	16
167059000_20190423063508604_1_LARGE	16
177059000_20190423063502793_1_LARGE	16
187059000_20190423063452963_1_LARGE	17
197059000_20190423063455069_1_LARGE	17
207059000_20190423063504351_1_LARGE	17
217059000_20190423063502009_1_LARGE	17
227059000_20190423063456521_1_LARGE	17
237059000_20190423063510839_1_LARGE	17
247059000_20190423063357014_1_LARGE	18
257059000_20190423063357814_1_LARGE	18
267059000_20190423063358386_1_LARGE	18
277059000_20190423063344598_1_LARGE	18
287059000_20190423063344087_1_LARGE	18
297059000_20190423063543329_1_LARGE	18
307059000_20190423063350688_1_LARGE	19
317059000_20190423063350151_1_LARGE	19
327059000_20190423063347042_1_LARGE	19
337059000_20190423063347573_1_LARGE	19
347059000_20190423063348113_1_LARGE	19
357059000_20190423063348630_1_LARGE	19
367059000_20190423063524107_1_LARGE	20
377059000_20190423063538169_1_LARGE	20
387059000_20190423063351716_1_LARGE	20

397059000_20190423063520296_1_LARGE	20
407059000_20190423063352250_1_LARGE	20
417059000_20190423063352768_1_LARGE	20
427059000_20190423063359917_1_LARGE	21
437059000_20190423063418624_1_LARGE	21
447059000_20190426082530883_1_LARGE	21
457059000_20190426082531583_1_LARGE	21
467059000_20190423063525623_1_LARGE	21
477059000_20190423063402992_1_LARGE	21
487059000_20190426081512245_1_LARGE	22
497059000_20190423063404793_1_LARGE	22
507059000_20190423063408168_1_LARGE	22
517059000_20190426082532251_1_LARGE	22
527059000_20190423063421819_1_LARGE	22
537059000_20190423063425436_1_LARGE	22
547059000_20190426081514493_1_LARGE	23
557059000_20190423063432507_1_LARGE	23
567059000_20190423063429101_1_LARGE	23
577059000_20190423063429766_1_LARGE	23
587059000_20190423063430513_1_LARGE	23
597059000_20190423063430513_1_LARGE	23
607059000_20190423063431866_1_LARGE	24
617059000_20190423063433122_1_LARGE	24
627059000_20190423063433703_1_LARGE	24
637059000_20190423063434286_1_LARGE	24
647059000_20190423063409394_1_LARGE	24
657059000_20190423063438135_1_LARGE	24
667059000_20190423063438783_1_LARGE	25
677059000_20190423063439477_1_LARGE	25

687059000_20190423063440292_1_LARGE	25
697059000_20190423063446559_1_LARGE	25
707059000_20190423063416093_1_LARGE	25
717059000_20190426081511584_1_LARGE	25
КОНТАКТЫ	26
Контактная информация	26
Телефоны	26
Время работы	26
Адрес	26

ХАРАКТЕРИСТИКИ

Обзор

The Beautiful and Spacious Hatteras 58 Motor Yacht! Famous for her full-beam Salon and Master and of course the Walk-Through Engine Rooms, the Hatteras 58 set the standard for larger production motor yachts!

Charisma features the galley-up four-stateroom four-head layout with the Galley and Salon on the same level. She is a beautiful and very-well maintained motor yacht with updates throughout, including an upgraded Galley with Stainless Steel Appliances, and Enclosed Aft Deck and new flooring throughout. Powered by Detroit 8V 92TIs rated at 550 HP each she is reported to give a comfortable and economic 10 knot cruise at 1500 +/-RPM

Please check the FULL SPECS for more information and give us a call to schedule an appointment to see her for yourself!

Основная информация

Тип судна: Моторная яхта

Модельный год: 1978

Год постройки: 1978

Страна: United States

Верх: Enclosed

Размеры

Длина общая: 58' 0" (17.68m)

Ширина: 15' 10" (4.83m)

Макс. осадка: 4' 9" (1.45m)

Скорость, вместимость и масса

Крейс. скорость: 10 Kts. (12 MPH)

Крейсерская скорость поворота: 1500 Kts.

Макс. скорость: 20 Kts. (23 MPH)

Макс. скорость поворота: 2300 Kts.

Водоизмещение: 74000 Pounds

Вместимость воды: 300 Gallons

Вместимость сточного бака: 150 Gallons **Объем топливного бака:** 775 Gallons

Размещение

Всего кают: 4

Всего ком. состава: 4

Корпус и палуба

Материал корпуса: Fiberglass

Материал палубы: Fiberglass

Информация о двигателе

Двигатели: 2

Производитель: Detroit Diesel

Модель: 8V92 TI

Тип двигателя: Inboard

Тип топлива: Diesel

ПОДРОБНОЕ ОПИСАНИЕ

Accommodations

The 58 foot Hatteras "Charisma" is a Pilothouse-Style Motor Yacht that features the Galley-Up Four-Stateroom Four-Head Layout with a Full Beam Salon and Aft Master Stateroom.

The Galley is located on the deckhouse level, open to the Salon.

The Lower Helm/Pilothouse is separated from the Galley and Salon with a Privacy Door.

The Salon features a fresh headliner and wood laminate flooring. Beautifully furnished and professionally decorated, the salon also has a a settee and arm chairs with multiple slip-cover options, LED and neon lighting, etched glass sliding doors and a 48" TV.

Aft of the Salon through sliding glass doors is the Enclosed Aft Deck with an additional layer of starboard and another of sound-deadening Insulation. The Aft Deck area has been freshly repainted and has new carpeting (2018) along with LED Lighting. A Ladder from the aft deck leads to the swim platform and unfolds to become a water swim ladder.

The stairway to the lower level is to starboard, down from the Pilothouse, leading to a forward landing area set up for use as an office. Here is a laundry closet with a Kenmore Over/Under Washer and Dryer.

There are two Staterooms forward of the Engine Rooms, each with a Private Head.

The Forward Stateroom was originally designed as crew quarters, features over/under single berths. Down two steps and separated from the lower landing by a privacy door the Forward Stateroom has its own head with stall shower.

Aft of the Forward Stateroom and to port of the landing is the second Stateroom with over/under single berths that are perpendicular to each other, the upper berth along the port side while the lower is underneath and abeam the boat. This stateroom also has a private Head with handheld shower. Access to the Generator Room is in the floor of this stateroom as well as a large locker currently used for tool storage.

From the landing, down four steps is the hallway between the two separate port and starboard engine rooms

At the end of the hallway moving aft to port is the VIP Stateroom with twin berths and a large hanging locker with ample storage. This stateroom also has a head located directly across the hall to starboard, this head also has a walk-in stall shower.

Further aft down the hallway is the full beam Master Stateroom which features a free standing walk around island berth with flanking night stands, a large hanging locker with accordion doors and a nice Vanity/Dressing table. The Master has a large private head with shower and

tub. There is also an abundance of drawer storage to both port and starboard and a large cedar-lined walk in locker.

Each head is a 32VDC Galley Maid style unit, with two blackwater holding tanks 90 and 60 gallon capacities, with deck fittings as well as a macerator pump and overboard discharge.

Each Stateroom as well as the Salon has its own TV, the Salon has Satellite and Antenna, the Master Stateroom has Satellite only, the other three staterooms have Antenna only.

Each Stateroom has its own Temperature Control.

The boat features a fresh Headliner along with the original beautiful Hatteras interior woodwork accented by light oak laminate flooring throughout.

Galley

The Galley is located on the deckhouse level, open to the Salon. Upgraded, Galley features include:

- Solid Surface Countertops
- Stainless Steel Appliances and Laminate Backsplash
- Full Size Side-by-Side KitchenAid Refrigerator and Freezer with Ice and Water Dispenser - 2007
- Kenmore Four Burner Solid Surface Electric Stovetop
- Two Fisher & Paykel Drawer-type Dishwashers
- KitchenAid Trash Compactor
- ULine Wine Chiller - 2007
- GE Advantium Speedcook Microwave Oven - 2015
- Single Stainless Steel Sink Basin
- Cuisinart Toaster
- BHG Coffee Maker
- LED Lighting - Overhead and Under Cabinets
- Exhaust Fan - Outside Vented
- UV Water Filtration System

Electronics and Navigation

The Electronics are wired with a dedicated 12VDC circuit to avoid any electrical interference.

BRIDGE

- RayMarine C120 Chartplotter
- RayMarine Radar Receiver with Wide Array Radar Antenna
- Four RayMarine Cameras - Each Engine Room, Generator Room, and Aft Facing
- RayMarine ST6002 Smart Pilot
- RayMarine ST40 Wind Instrument
- RayMarine Satellite Antenna
- Yacht Sentry
- Wesmar Bow Thruster Control
- Wesmar Stabilizer Control
- Datamarine Depth Sounder - Refurbished
- Original Hatteras Spotlight Control - Light Refurbished

PILOTHOUSE

- RayMarine Repeater for C120 Functions
- LG Flatscreen Monitor
- RayMarine ST6002 Smart Pilot
- RayMarine ST40 Wind Instrument
- Yacht Sentry
- Wesmar Bow Thruster Control
- Wesmar Stabilizer Control
- Datamarine Depth Sounder - Refurbished
- Original Hatteras Spotlight Control - Light Refurbished

Pilothouse/Bridge/Foredecks

BRIDGE DECKS

- Full Bridge Enclosure with Aft Bridge Deck Bimini
- Dual Pompanette Pedestal Helm Chairs
- Radar Arch with LED Lighting
- Folding Radar Mount for Clearance
- Port and Starboard Forward Facing Aft Deck Seating
- Port and Starboard Additional Bench Seating - All with Storage Underneath
- Clarion AM/FM/CD Bridge Stereo
- Davis Dinghy Davit
- Aluminum Dinghy Cradle
- Engine Gauges Refreshed 2010

PILOT HOUSE

- Dual Pilothouse Entry Doors, Port and Starboard
- Bench Seating
- 12 VDC / 24 VDC / 36 VDC Electrical Distribution Panels

- LED Overhead Lighting - Red and White Lights
- Map Lights
- Engine Gauges Refreshed 2010
- Generator Control Panel
- Tank Tender System - Fuel/Water/Waste
- Galvanic Activity Monitor
- Inverter Monitor and Control Panel

FOREDECK

- Bow Pulpit with New Upgraded Anchor Windlass
- Bow Pulpit Cover
- Dual Anchors with Anchor Rode
- Two Bow Mounted Storage Boxes
- Forward Facing Bow Seating
- Deck Railings, Bow Pulpit, and All Exterior Woodwork Varnished 2017
- Decks Repainted 2017
- Bow Fender Storage

Engines and Mechanical

- Twin 8V92 TI Detroit Diesels / 550 HP each
- Starboard Indicated 1450 Hours SMOH
- Port Indicated 2500 Hours SMOH
- Allison MH20 Transmissions
- Glendenning Engine Synchronizers
- Upgraded Detroit 12V Heat Exchangers
- AirSep Positive Pressure Intakes
- New Fuel Manifold and Lines - 2012
- Fuel Polishing System
- Oil Exchange System
- Dripless Shaft Seals - 2017
- Wesmar Stabilizers
- 24 VDC Wesmar Bow Thruster
- Single Onan 150MDL Generator – 4600 Hours

- 12/24/36 VDC Electrical Systems

- Xantrex 3000W Inverter/Charger 12VDC / 8-6VDC Battery Pack

- Automatic Inverter Switching, Engages when Disconnected from Shore Power

- Guest 24 VDC Battery Charger
- Charles 32 VDC Battery Charger
- Single 240 VAC Shore Connection – Port OR Starboard Hookup
- Two 40' 240VAC 50 Amp Shore Cords
- Jefferson Isolation Transformer
- Cruise Air Split system Reverse Cycle Heat and AC for the Staterooms – 24000 BTU Compressor with 4 air handlers, each stateroom has individual temperature control pads.
- Individual 16000 BTU Reverse Cycle HVAC – Pilothouse
- Individual 16000 BTU Reverse Cycle HVAC – Galley
- Individual 7000 BTU Reverse Cycle HVAC – Salon
- Village Marine Tec 1200 RO Watermaker - Pickled
- 12VDC Alternator on th Starboard Engine
- 36VDC Alternator on the Port Engine
- 20 Gallon Rapid Recovery Water Heater - Master
- 50 Amp SHore Service with Circuit Breakers - Replaced Old Buss Fuse System

Additional Information

- **Charisma** was Painted in 2007
- The Beauty Stripes were Painted in 2016
- The Bridge Overhangs and Aft Deck Ceiling were Painted in 2017
- The Decks were Painted in 2017
- The Railings, Pulpit, and All Exterior Woodwork was Varnished in 2017
- The Bottom was Peeled and Repainted in 2017
- All Thru-Hulls were Replaced in 2006
- All Sanitation Lines Replaced in 2006
- Forward Sanitation Hoses Replaced 2011

Disclaimer

The Company offers the details of this vessel in good faith but cannot guarantee or warrant the accuracy of this information nor warrant the condition of the vessel. A buyer should instruct his agents, or his surveyors, to investigate such details as the buyer desires validated. This vessel is offered subject to prior sale, price change, or withdrawal without notice.

Исключения

При продаже яхты исключаются личные вещи владельца.

Отказ от ответственности

Компания предоставляет описание судна или яхты добросовестно, но не может гарантировать точность этой информации, а также не ручается за техническое состояние. Покупатель должен проинструктировать своих агентов или оценщиков исследовать представленную информацию более подробно, по собственному желанию. Продажа судна или яхты, изменение цены или снятие с продажи будет происходить без предварительного уведомления.

ФОТОГРАФИИ

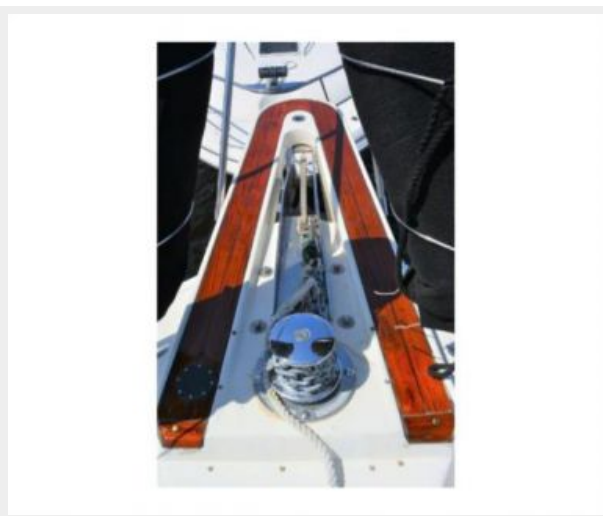
27059000_20190423063558521_1_LARGE



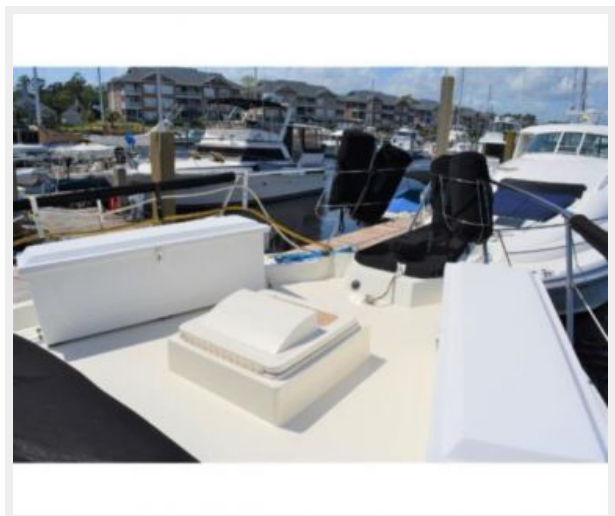
37059000_20190423063546646_1_LARGE



47059000_20190423063517076_1_LARGE



57059000_20190423063514740_1_LARGE



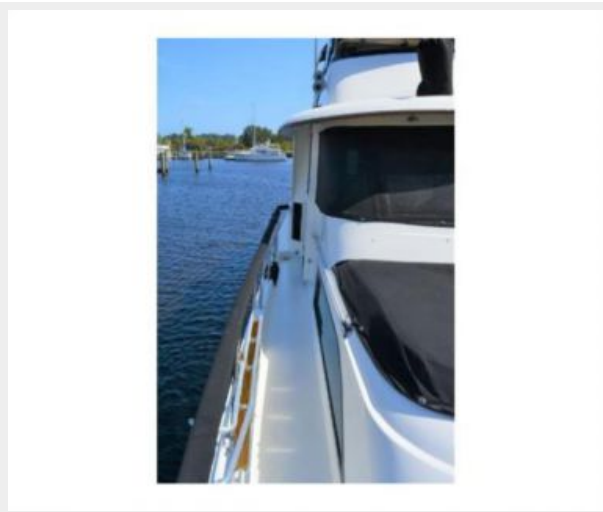
67059000_20190423063511617_1_LARGE



77059000_20190423063515546_1_LARGE



87059000_20190423063513911_1_LARGE



97059000_20190423063513152_1_LARGE



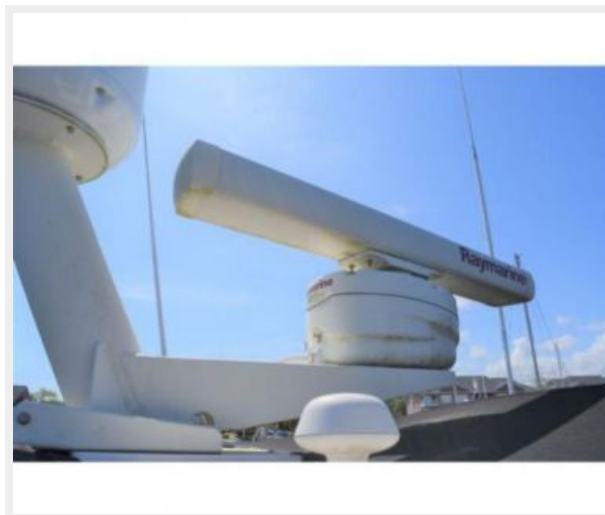
107059000_20190423063516303_1_LARGE



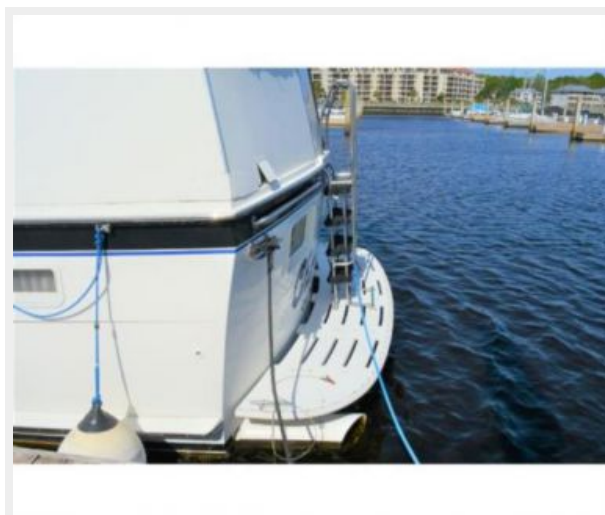
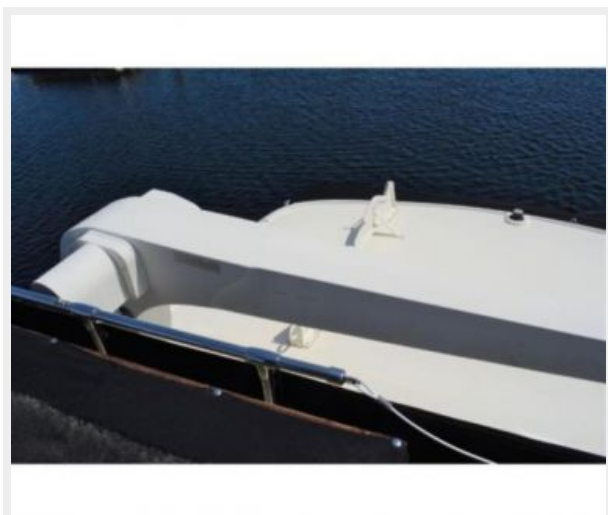
117059000_20190423063547511_1_LARGE



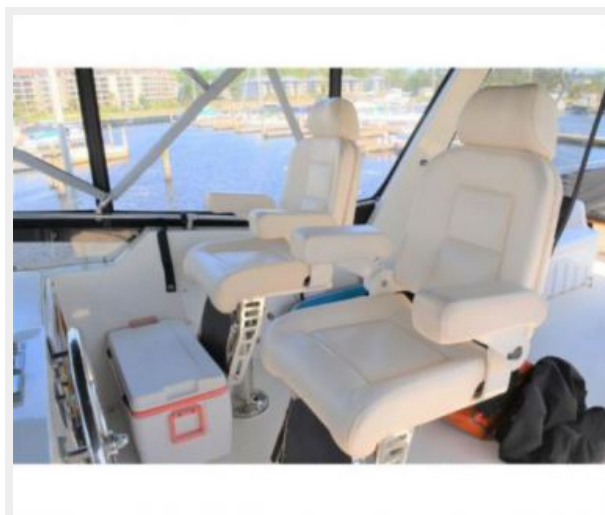
127059000_20190423063549362_1_LARGE 137059000_20190423063529317_1_LARGE



147059000_20190423063450884_1_LARGE 157059000_20190423063548429_1_LARGE



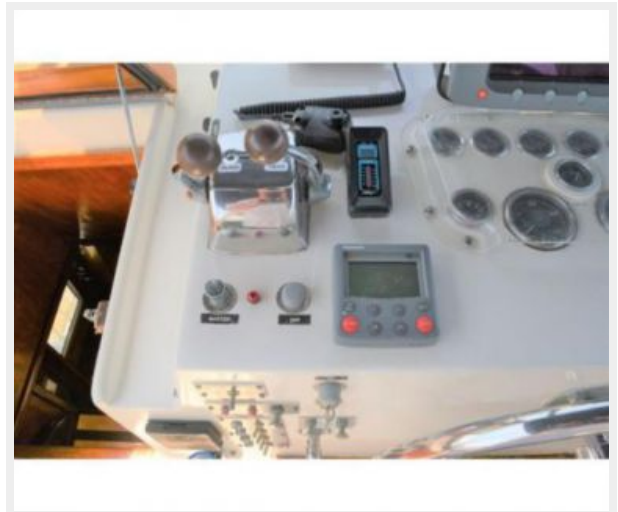
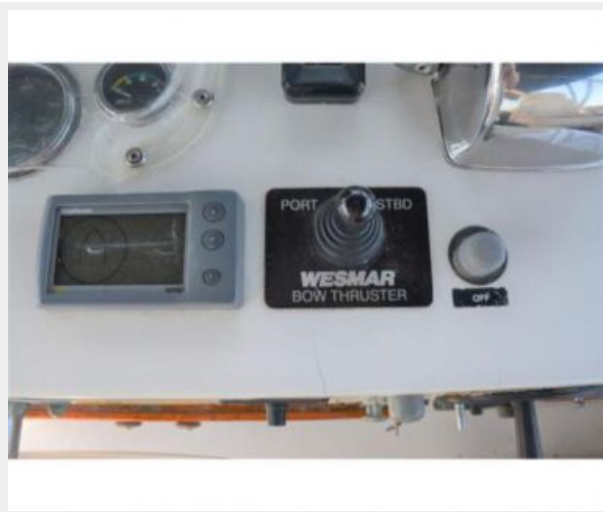
167059000_20190423063508604_1_LARGE 177059000_20190423063502793_1_LARGE



187059000_20190423063452963_1_LARGE 197059000_20190423063455069_1_LARGE



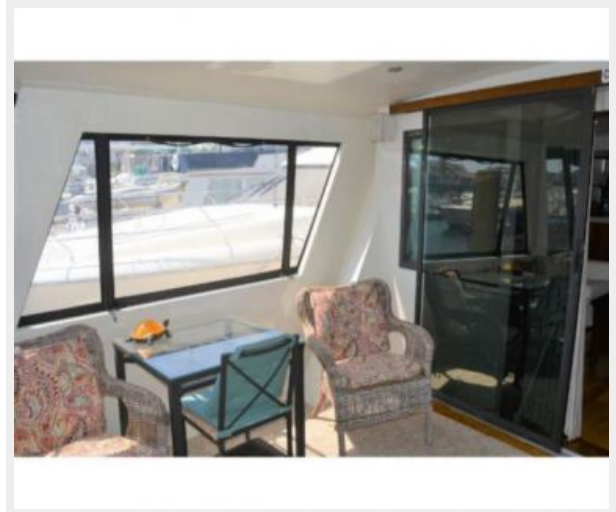
207059000_20190423063504351_1_LARGE 217059000_20190423063502009_1_LARGE



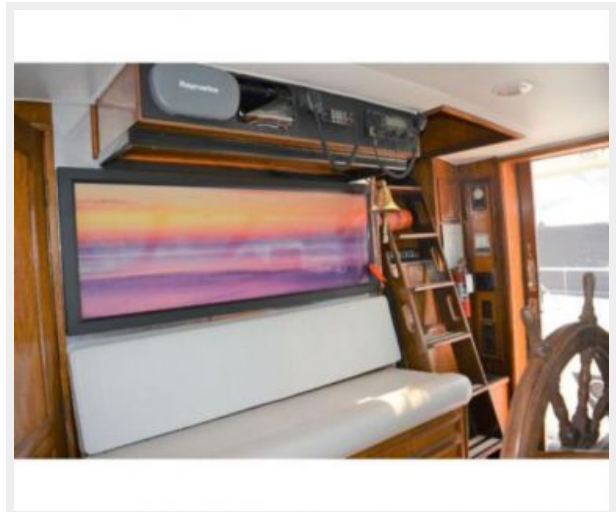
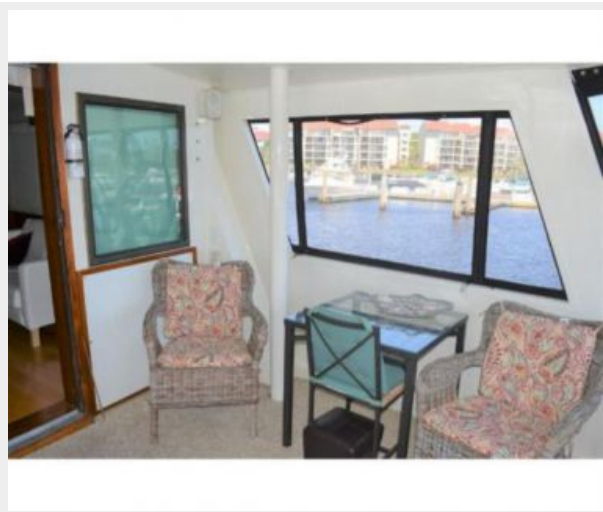
227059000_20190423063456521_1_LARGE 237059000_20190423063510839_1_LARGE



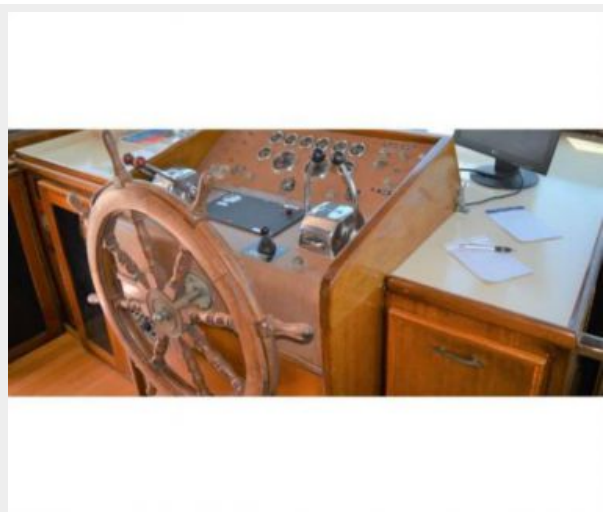
247059000_20190423063357014_1_LARGE 257059000_20190423063357814_1_LARGE



267059000_20190423063358386_1_LARGE 277059000_20190423063344598_1_LARGE



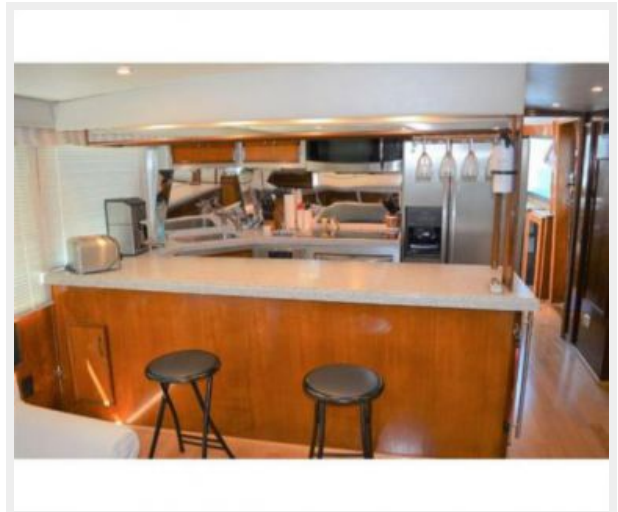
287059000_20190423063344087_1_LARGE 297059000_20190423063543329_1_LARGE



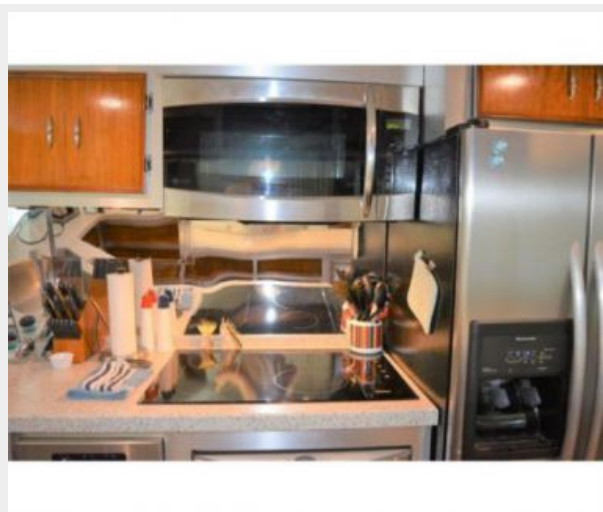
307059000_20190423063350688_1_LARGE 317059000_20190423063350151_1_LARGE



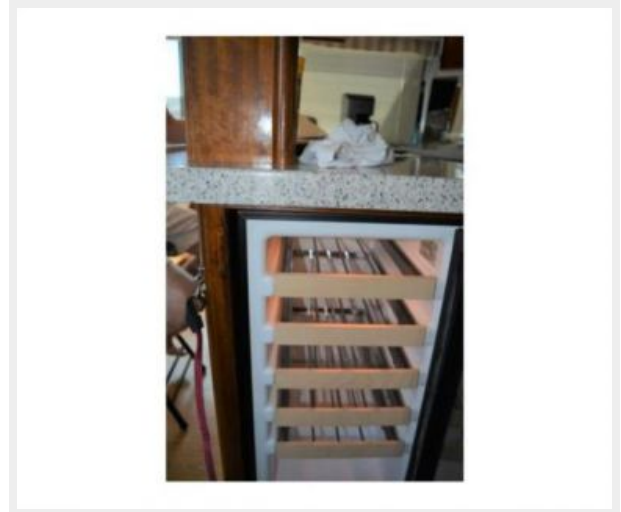
327059000_20190423063347042_1_LARGE 337059000_20190423063347573_1_LARGE



347059000_20190423063348113_1_LARGE 357059000_20190423063348630_1_LARGE



367059000_20190423063524107_1_LARGE 377059000_20190423063538169_1_LARGE



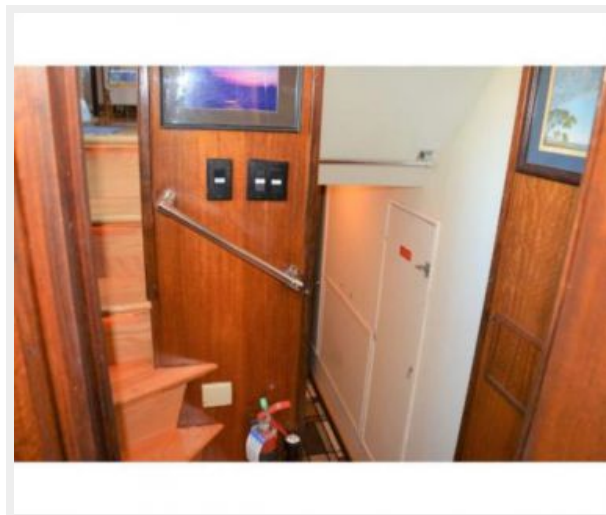
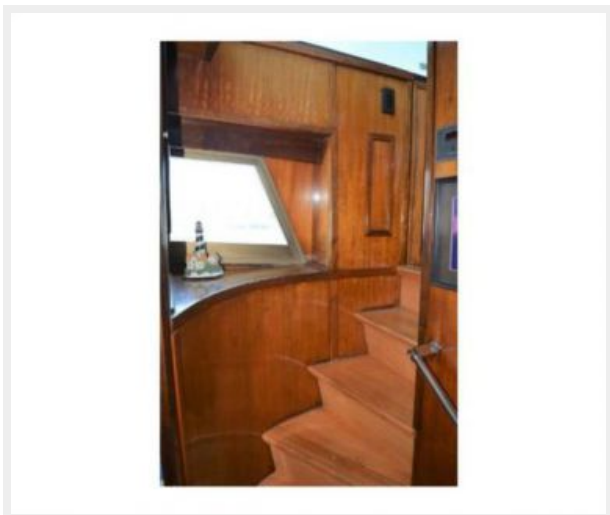
387059000_20190423063351716_1_LARGE 397059000_20190423063520296_1_LARGE



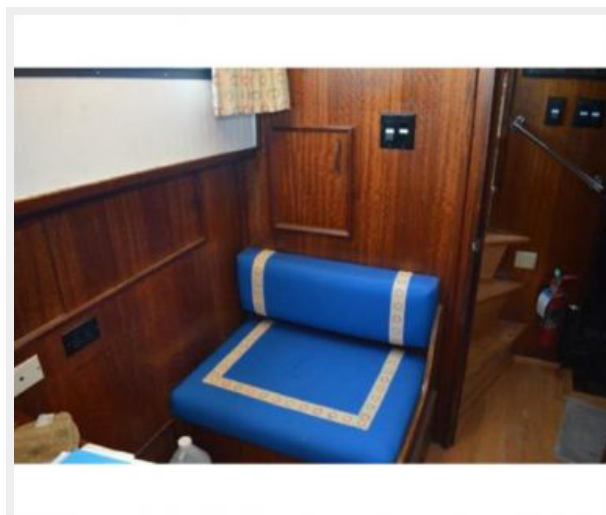
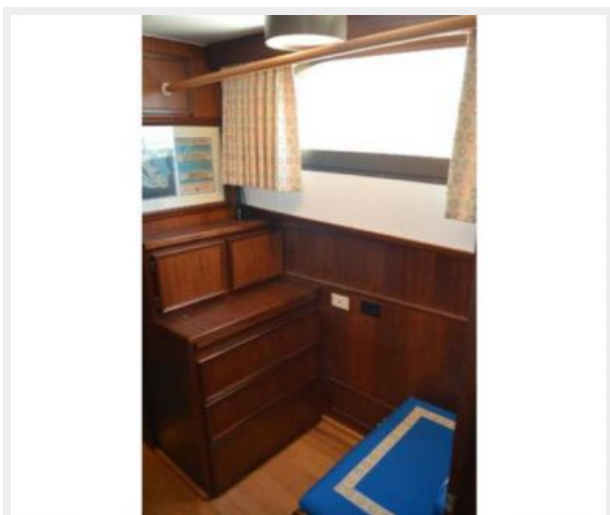
407059000_20190423063352250_1_LARGE 417059000_20190423063352768_1_LARGE



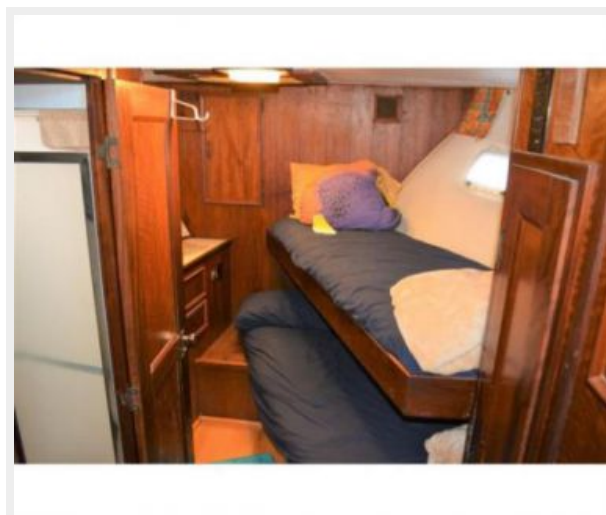
427059000_20190423063359917_1_LARGE 437059000_20190423063418624_1_LARGE



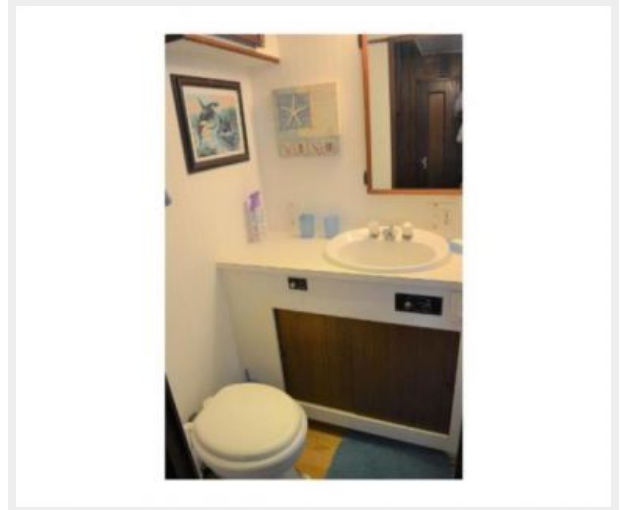
447059000_20190426082530883_1_LARGE 457059000_20190426082531583_1_LARGE



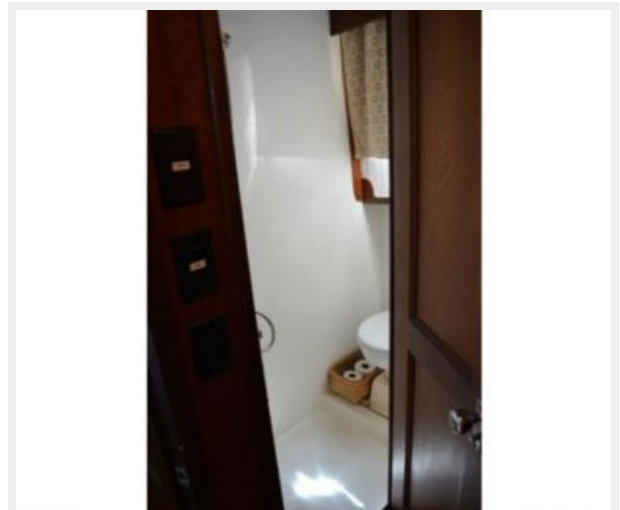
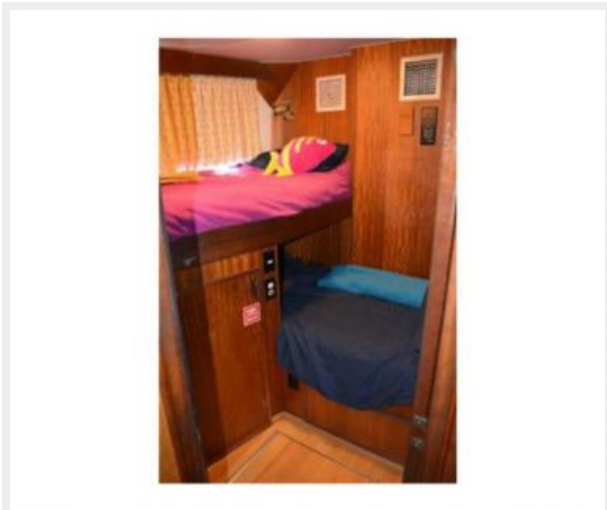
467059000_20190423063525623_1_LARGE 477059000_20190423063402992_1_LARGE



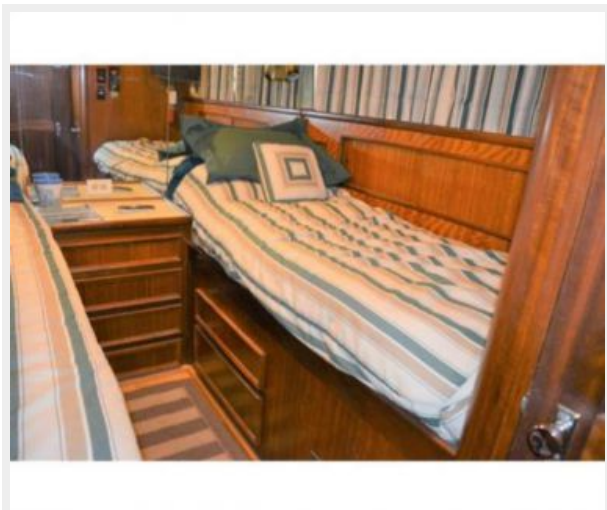
487059000_20190426081512245_1_LARGE 497059000_20190423063404793_1_LARGE



507059000_20190423063408168_1_LARGE 517059000_20190426082532251_1_LARGE



527059000_20190423063421819_1_LARGE 537059000_20190423063425436_1_LARGE



547059000_20190426081514493_1_LARGE 557059000_20190423063432507_1_LARGE



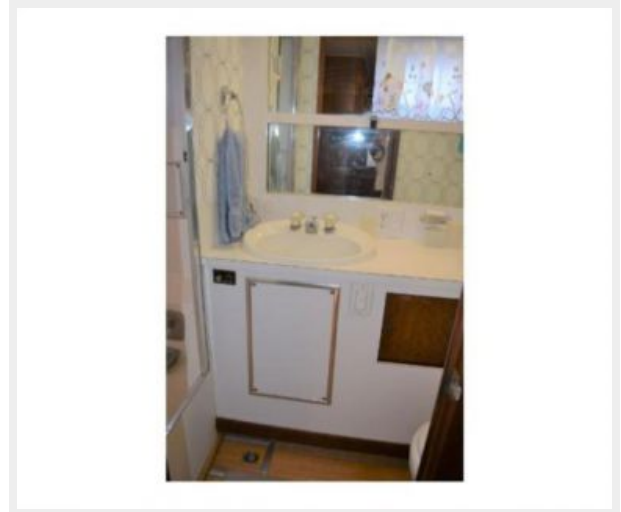
567059000_20190423063429101_1_LARGE 577059000_20190423063429766_1_LARGE



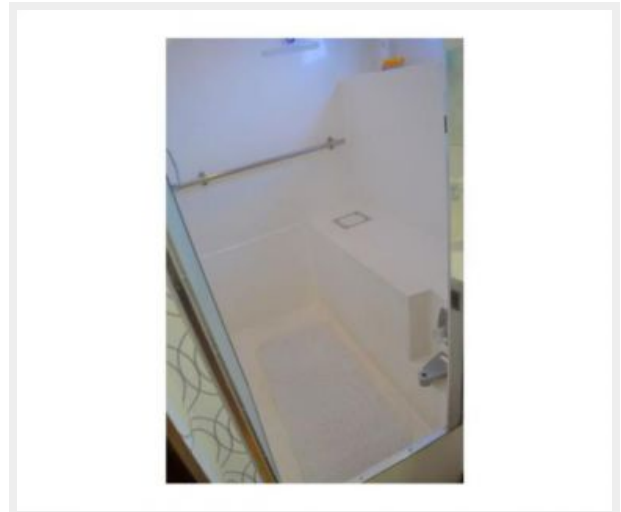
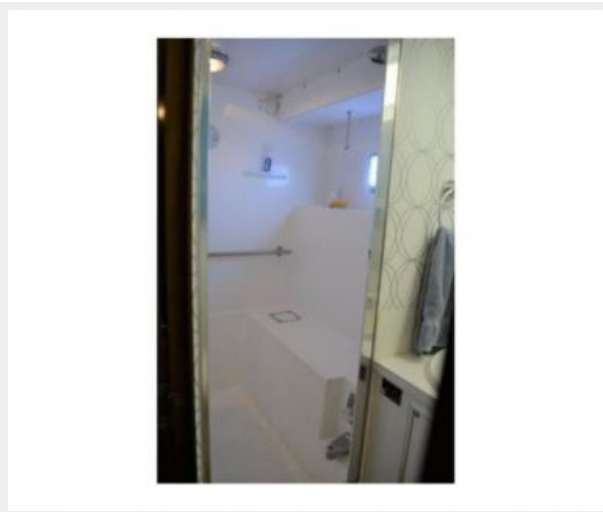
587059000_20190423063430513_1_LARGE 597059000_20190423063430513_1_LARGE



607059000_20190423063431866_1_LARGE 617059000_20190423063433122_1_LARGE



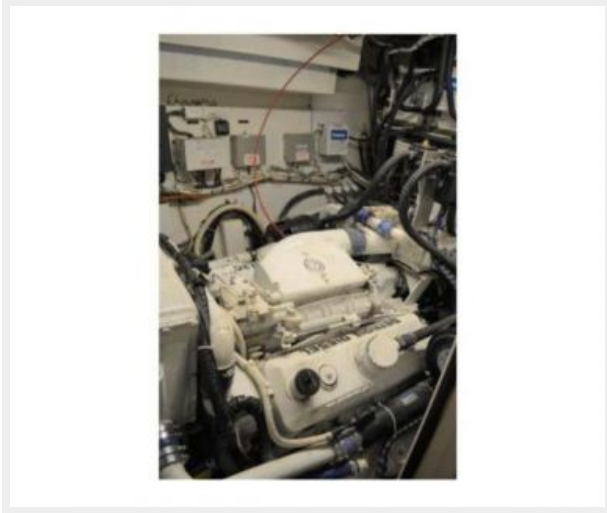
627059000_20190423063433703_1_LARGE 637059000_20190423063434286_1_LARGE



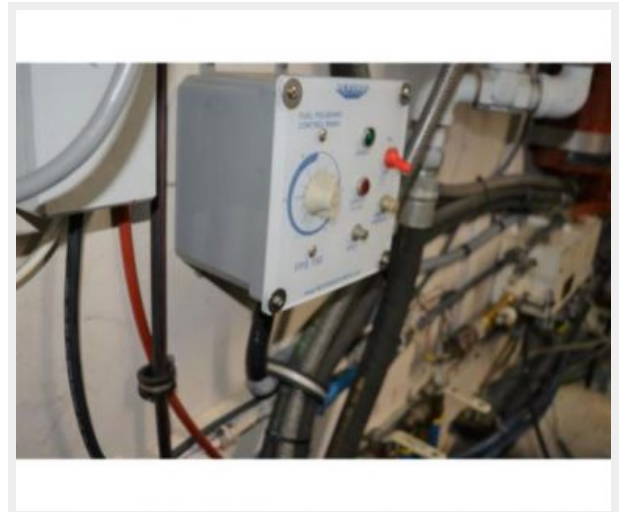
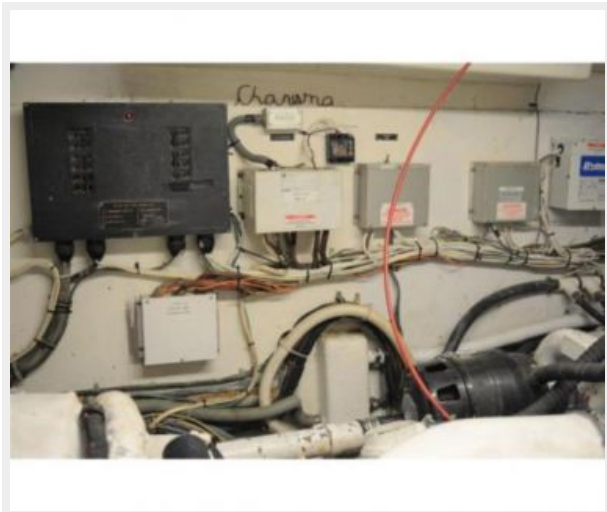
647059000_20190423063409394_1_LARGE 657059000_20190423063438135_1_LARGE



667059000_20190423063438783_1_LARGE 677059000_20190423063439477_1_LARGE



687059000_20190423063440292_1_LARGE 697059000_20190423063446559_1_LARGE



707059000_20190423063416093_1_LARGE 717059000_20190426081511584_1_LARGE



КОНТАКТЫ

Андрей Шестаков (Andrey Shestakov) – ведущий яхтенный брокер отдела продаж яхт и судов компании Shestakov Yacht Sales Inc. Официальный представитель Shestakov Yacht Sales Inc. для русскоговорящих клиентов в центральном офисе компании в Майами/Форт Лодердейл/Флорида/США.

Контактная информация

Email: andrey@shestakovyachtsales.com

Web: shestakovyachtsales.com

Телефоны

Краснодарский край: **+7(918)465-66-44**

США, Майами, Флорида: **+1(954)274-4435**

Время работы

Понедельник – Суббота: **9:00 - 21:00**
EDT

Воскресенье: **Закрето**

Адрес



Harbour Towne Marina, 850 NE 3rd St,
STE 213, Dania, FL 33004