

## LA BELLE SUISSESSE — SEA RAY



**Builder:** [SEA RAY](#)

**Year Built:** 2005

**Model:** Motor Yacht

**Price:** PRICE ON APPLICATION

**Location:** United States

**LOA:** 39' 0" (11.89m)

**Max Draft:** 3' 0" (0.91m)

**Cruise Speed:** 20 Kts. (23 MPH)

**Max Speed:** 25 Kts. (29 MPH)

Our experienced yacht broker, Andrey Shestakov, will help you choose and buy a yacht that best suits your needs **La Belle Suisse** — **SEA RAY** from our catalogue. Presently, at Shestakov Yacht Sales Inc., we have a wide variety of yachts available on our sale's list. We also work in close contact with all the big yacht manufacturers from all over the world.

If you would like to buy a yacht **La Belle Suisse** — **SEA RAY** or would like help answering any questions concerning purchasing, selling or chartering a yacht, please call **+1(954)274-4435**

---

# TABLE OF CONTENTS

---

TABLE OF CONTENTS	2
SPECIFICATIONS	6
Overview	6
Basic Information	6
Dimensions	6
Speed, Capacities and Weight	6
Accommodations	7
Hull and Deck Information	7
Engine Information	7
PHOTOS	8
3	8
2	8
5	8
4	8
6	9
7	9
8	9
9	9
10	9
11	9
12	10
13	10
14	10
15	10
16	10
17	10
18	11
19	11

---

20	11
21	11
22	11
23	11
24	12
25	12
26	12
27	12
28	12
29	12
30	13
31	13
32	13
33	13
34	13
35	13
36	14
37	14
38	14
39	14
40	14
41	14
42	15
43	15
44	15
45	15
47	15
46	15
48	16

---

---

49	16
50	16
51	16
52	17
53	17
54	17
55	17
56	17
57	17
58	18
59	18
60	18
61	18
62	19
63	19
64	19
65	19
67	20
66	20
68	20
69	20
70	21
71	21
72	21
73	21
74	21
75	21
76	22
77	22

---

78	22
79	22
80	22
81	22
82	23
83	23
84	23
CONTACTS	24
Contact details	24
Telephones	24
Office hours	24
Address	24

---

# SPECIFICATIONS

---

## Overview

---

With low hour common rail Cummins diesel engines (200 hrs on Twin 480 hp QSC8.3's), Bow thruster for easy docking, Full RayMarine Navigational package, Helm Deck HVAC and a clean roomy interior layout, this appealing 390 MY is the Best Priced boat on the Market. Walk-up steps from the swim platform makes for easy on and off of the boat. Excellent visibility at the helm makes for pleasurable boating, and a large seating area for entertaining on the aft deck. She boats a roomy salon with hardwood flooring and comfortable 2 sofa seating, Hi-low table for dinner and open galley with top shelf equipment. 2 staterooms, each has its own head and shower. More Info coming!

## Basic Information

---

**Category:** Motor Yacht

**Sub Category:** Cruiser

**Model Year:** 2005

**Year Built:** 2005

**Country:** United States

## Dimensions

---

**LOA:** 39' 0" (11.89m)

**LOD:** 41' 6" (12.65m)

**Max Draft:** 3' 0" (0.91m)

## Speed, Capacities and Weight

---

**Cruise Speed:** 20 Kts. (23 MPH)

**Max Speed:** 25 Kts. (29 MPH)

**Displacement:** 26500 Pounds

**Water Capacity:** 100 Gallons

**Holding Tank:** 54 Gallons

**Fuel Capacity:** 300 Gallons

---

## Accommodations

---

**Total Cabins:** 2

**Total Berths:** 3

---

## Hull and Deck Information

---

**Hull Material:** Fiberglass

**Hull Configuration:** Modified V-Hull

**Hull Color:** White

---

## Engine Information

---

**Manufacturer:** Cummins

**Model:** 6CTA8.3

**Engine Type:** Inboard

**Fuel Type:** Diesel

# PHOTOS

2



3



5



4





6



7



8



9



10



11



12



13



14



15



16



17



18



19



20



21



22



23



24



25



26



27



28



29



30



31



32



33



34



35



36



37



38



39



40



41



42



43



44



45



46



47



48



49



50



51





52



53



54



55



56



57



58



59



60



61



62



63



64



65



66



67



68



69



70



71



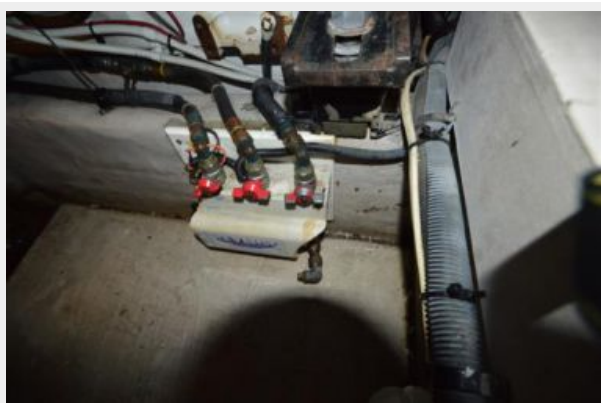
72



73



74



75



76



77



78



79



80



81



82



83



84



# CONTACTS

---

Andrey Shestakov, leading yacht broker of the sales department of Shestakov Yacht Sales Inc. Shestakov Yacht Sales Inc., the official representative of the Miami/Fort Lauderdale FL headquarters.

## Contact details

---

Email: [andrey@shestakovyachtsales.com](mailto:andrey@shestakovyachtsales.com)

Web: [shestakovyachtsales.com/en/](http://shestakovyachtsales.com/en/)

## Telephones

---

USA: +1(954)274-4435

## Office hours

---

Monday – Saturday: **9:00 - 21:00** EDT

Sunday: **closed**

## Address

---



Harbour Towne Marina, 850 NE 3rd St,  
STE 213, Dania, FL 33004