

MAKANI KAI — BENETEAU



Builder: BENETEAU

LOA: 43' 0" (13.11m)

Year Built: 2008

Model: Sloop

Price: PRICE ON APPLICATION

Location: United States

Our experienced yacht broker, Andrey Shestakov, will help you choose and buy a yacht that best suits your needs **Makani Kai — BENETEAU** from our catalogue. Presently, at Shestakov Yacht Sales Inc., we have a wide variety of yachts available on our sale's list. We also work in close contact with all the big yacht manufacturers from all over the world.

If you would like to buy a yacht **Makani Kai — BENETEAU** or would like help answering any questions concerning purchasing, selling or chartering a yacht, please call **+1(954)274-4435**

TABLE OF CONTENTS

TABLE OF CONTENTS	2
SPECIFICATIONS	3
Overview	3
Basic Information	3
Dimensions	3
Accommodations	3
Hull and Deck Information	3
Engine Information	4
DETAILED INFORMATION	5
Accommodations	5
Galley	5
Sails & Rigging	6
Electronics/Navigation Equipment	6
Deck Equipment and Hull	6
Electrical System	7
Mechanical	8
Disclaimer	8
Exclusions	8
Disclaimer	8
PHOTOS	10
CONTACTS	21
Contact details	21
Telephones	21
Office hours	21
Address	21

SPECIFICATIONS

Overview

- Original owner, never chartered, 2 cabin 2 head layout
- Low engine hours, complete maintenance log and spare kit
- Clean and lightly used
- Ease of handling with roller furling genoa and all lines to cockpit
- In mast furling main with vertical battens and electric winch
- (2) Independant house battery systems AGM
- Raymarine E120 Chartplotter, Radar, Autopilot
- AIS Transceiver, Sirius Weather Receiver
- Dual helm stations
- St Croix Dingy davits and custom outboard mount
- Stern step transom lighting with remote control fob
- Very clean vessel ready for new owners to enjoy!

Basic Information

Category: Sloop

Model Year: 2008

Year Built: 2008

Country: United States

Dimensions

LOA: 43' 0" (13.11m)

Accommodations

Total Cabins: 2

Hull and Deck Information

Hull Material: Fiberglass

Engine Information

Engines: 1

Manufacturer: Yanmar

Fuel Type: Diesel

DETAILED INFORMATION

Accommodations

- Owner version, 2 stateroom, 2 head layout
- Sleep in air conditioned comfort or open the numerous hatches for excellent ventilation, hatches have Oceanair shades and screens
- (2) Cruiseair reverse cycle air conditioning units, 16,000 btu unit in salon is 2016
- Skylights with accordian shades
- Plenty of natural light (9) 12V fans
- Blue upholstery in great condition
- The central salon features a U shaped settee with comfortable lounge to starboard
- Long settee to port with plenty of storage under cushions
- High gloss dining table with short posts legs and filler cushion to convert to an additional double berth
- The Navigation station and electric panel is located at the end of the port settee
- Outboard shelves and cabinets
- Fully equipped L shaped galley is port of the companionway
- The private cabin aft features an upholstered bench forward of the athwartship queen berth, hanging locker and ensuite access to the master head with vanity and separate shower stall. Dual access from salon to the aft head
- The large Master Stateroom forward features a custom mattress in the V berth, lockers and hanging locker with an upholstered cushion seat to port and end table on starboard side. Ensuite private access to forward head.
- Warm teak and holly laminate sole in good condition
- High gloss teak companionway bi fold doors with sliding lexan hatch, canvas cover

Galley

- VitriGO Front loading 12V refrigeration
- VitriGO Top loading 12V Freezer
- 3 burner gimballed propane stove and oven w/SS safety bar
- (1) propane tank, space for 2 tanks in cockpit vented locker
- Tappan 110V Microwave oven
- Double SS sink with cutting board covers
- H & C Pressure water system
- Salt water foot pump
- Drawers, cabinet storage and shelves
- Under sink storage and waste bin
- Under cabin sole provisioning storage
- Wall mounted Fire blanket

Sails & Rigging

- Selden mast with single spreader
- SS wire rigging
- Lewmar traveller
- Rigid boom vang In mast Furling Mainsail with Vertical battens
- (1) Lewmar Electric #40ST winch
- All lines lead to cockpit for ease of handling
- (2) sets of Cam cleats
- Roller furling drum
- 140% Genoa with sacrificial UV cover
- (2) Genoa tracks and adjustable cars (2) Genoa sheet foot blocks
- Spinnaker halyard
- (1) T tracks installed on front of mast with two eye-loop cars for spinnaker pole (not installed)
- (2) Lewmar #48 ST primary winches
- (1) Lewmar #40 ST winch
- Tri color LED masthead light/combo anchor light 2017

Electronics/Navigation Equipment

- Raymarine E120 MFD Chartplotter in cockpit
- Raymarine 2kw Radar mounted on mast
- Raymarine ST6002 Autopilot
- Raymarine ST60 Tridata display
- Raymarine ST60 Wind display
- Fixed mount VHF at Nav Station
- Remote command mic at helm
- Raystar GPS antenna
- PC interface
- Stereo/CD Player and speakers
- Sirius Weather Receiver
- AIS Class B Transceiver
- (2) Plastimo Compass
- Deviation cards
- Tricolor LED masthead light
- Navigation lights

Deck Equipment and Hull

- Quick Electric windlass with handheld control
- SS anchor roller

- Anchor locker
- Delta anchor on SS swivel with 25' chain and 125' rode
- Fortress anchor with rode
- SS hand rails
- Hard bottom paint, 2016
- SS bow pulpit
- Non skid deck
- Teak cap rails
- Stanchions and lifelines with opening side gates
- Cradle on deck for liferaft installation
- Padeyes for jacklines
- Dual helm stations with helm seating
- Walk thru transom with removable seat
- SS stern rails with opening gates
- Long cockpit seating with teak insert
- (2) Extremely comfortable flip chairs with arm rests and drink holders
- Deep lazarette storage
- Drop leaf table with center storage bin and 12V lamp
- Dodger and bimini
- St Croix Davits (stored to be installed)
- Outboard Motor bracket on stern platform
- Swim platform
- Stern step transom lighting with remote key fob to use when returning to vessel at night!
- Swim ladder
- Hot and cold cockpit shower
- Emergency tiller
- Emergency bilge pump
- PFD's
- Fire extinguishers
- Flares
- Handheld spotlight
- Lifesling
- Ring buoy

Electrical System

- (2) Independant House battery systems
- (3) AGM 8D 270 Gel batteries 2011
- (2) 200 ah AGM batteries
- (3) way battery switch
- 100 amp Balmar load controlling Alternator
- (1) 95 amp Gel start battery 2016
- 40 amp Battery Charger

- Electric panel 21V/110V service
- 12V battery isolator
- Lightning grounding
- (6)110v outlets
- Halogen overhead lights
- Reading lights
- Orange floor level night lights w/remote key fob
- Shore power inlet and shore power cord

Mechanical

- 54 hp Yanmar engine with low use by original owner, only 400 hours
- Flexifold folding prop
- Racor filter
- 53 gallon fuel capacity
- Complete maintenance log since initial ownership
- Excellent engine access
- Yanmar engine spares kit in box
- Hot water heater
- 95 gallon water capacity
- (2) Electric heads
- (2) Macerator pumps
- (2) holding tanks and Y valves

Disclaimer

The Company offers the details of this vessel in good faith but cannot guarantee or warrant the accuracy of this information nor warrant the condition of the vessel. A buyer should instruct his agents, or his surveyors, to investigate such details as the buyer desires validated. This vessel is offered subject to prior sale, price change, or withdrawal without notice.

Exclusions

Owner's personal belongings.

Disclaimer

The Company offers the details of this vessel or yacht in good faith but cannot guarantee or warrant the accuracy of this information nor warrant the condition of the vessel. A buyer should instruct his representatives, agents, or his surveyors, to investigate such details as the buyer desires validated. This vessel or yacht is offered subject to prior sale, price change, or withdrawal

without notice.

PHOTOS

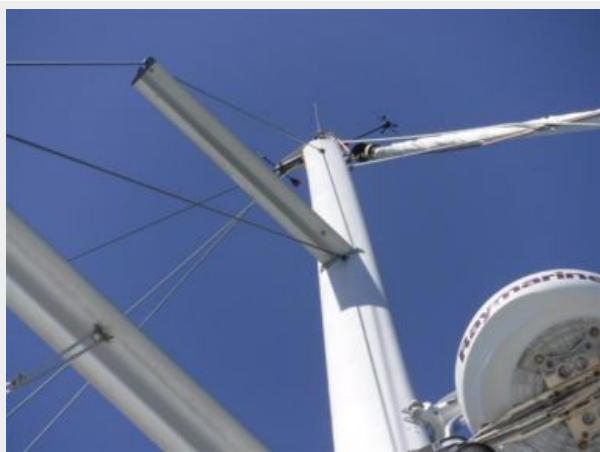








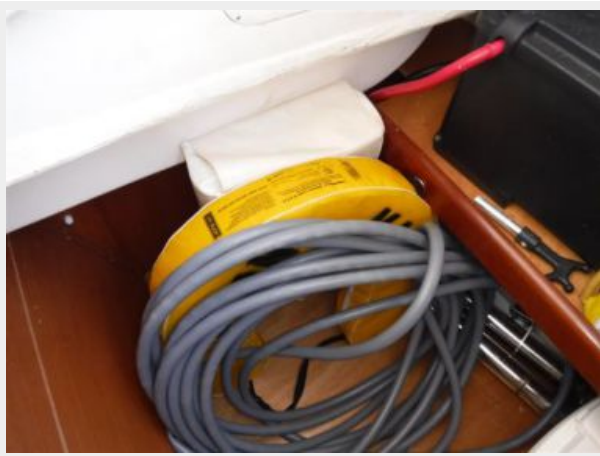
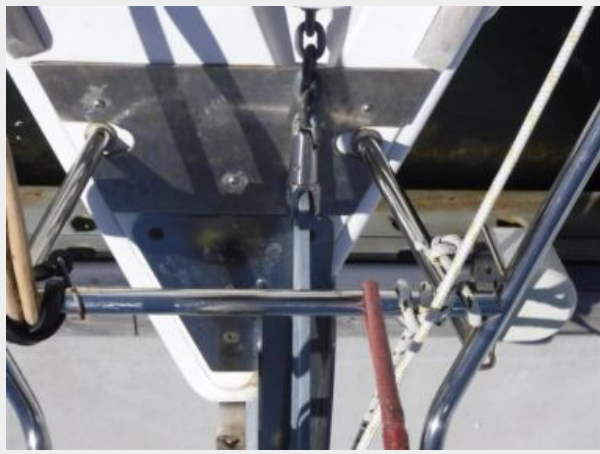














CONTACTS

Andrey Shestakov, leading yacht broker of the sales department of Shestakov Yacht Sales Inc. Shestakov Yacht Sales Inc., the official representative of the Miami/Fort Lauderdale FL headquarters.

Contact details

Email: andrey@shestakovyachtsales.com

Web: shestakovyachtsales.com/en/

Telephones

USA: +1(954)274-4435

Office hours

Monday – Saturday: **9:00 - 21:00** EDT

Sunday: **closed**

Address



Harbour Towne Marina, 850 NE 3rd St,
STE 213, Dania, FL 33004