

MISS AMANDA — TIARA



Судостроитель: TIARA

Год постройки: 2018

Модель: Крейсер

Цена: ЦЕНА ЯХТЫ ПО ЗАПРОСУ

Местонахождение: United States

Длина общая: 43' 0" (13.11m)

Ширина: 15' 4" (4.67m)

Купить **Miss Amanda — TIARA** а также выбрать подходящую вам яхту из нашего каталога яхт вам поможет опытный яхтенный брокер Андрей Шестаков. На сегодняшний день компания **Shestakov Yacht Sales Inc.** имеет большое количество яхт в собственном списке продаж, а также тесно сотрудничает со всеми крупными яхтенными производителями по всему миру.

Для того чтобы купить яхту **Miss Amanda — TIARA** а также проконсультироваться по любому вопросу связанному с покупкой, продажей, чартером яхт позвоните по телефону **+7(918)465-66-44**.

ОГЛАВЛЕНИЕ

ОГЛАВЛЕНИЕ	2
ХАРАКТЕРИСТИКИ	5
Обзор	5
Основная информация	6
Размеры	6
Скорость, вместимость и масса	6
Размещение	6
Корпус и палуба	6
Информация о двигателе	7
ПОДРОБНОЕ ОПИСАНИЕ	8
Exterior	8
Salon	9
Galley	9
Guest Stateroom	10
Head	10
Helm	10
Electronics	10
Electrical	11
Engine Room	11
Disclaimer	11
Исключения	12
Отказ от ответственности	12
ФОТОГРАФИИ	13
Dinette with Pullman	13
Salon	13
Dinette	13
Galley	13
Galley	13

Fridge and Freezer	13
Trash Bin	14
Master Stateroom	14
Master Stateroom	14
Master Stateroom Storage	14
Master Stateroom Storage	14
Guest Quarters	14
Head	15
Master Stateroom Storage	15
Head	15
Helm View	15
Helm	16
Helm	16
Helm	16
Joystick Controls	16
Helm	16
Custom Table Storage	16
Seating	17
Cockpit	17
Siderails	17
Cockpit	17
Cockpit	17
Foredeck	17
Foredeck	18
Foredeck	18
Windlass	18
Antennas	18
Fresh Water Washdown	18
FLIR Night Vision	18

Cockpit	19
Cockpit Seating	19
Cockpit Seating	19
Sun Shade	19
Portable Live Well	19
Portable Live Well Quick Connection	19
Engine Room	20
Engine Room	20
Engine Room	20
Engine Room	20
Engine Room	20
Engine Room	20
Engine Room	20
Engine Room	20
Engine Room	21
Engine Room	21
Port Profile	21
Aft Profile	21
Aft Profile	21
Aft Profile	21
Cockpit Storage Cover	22
Forward Profile	22
КОНТАКТЫ	23
Контактная информация	23
Телефоны	23
Время работы	23
Адрес	23

ХАРАКТЕРИСТИКИ

Обзор

This is by far the best equipped Tiara 43 on the market with many upgrades and expensive custom features that will attract both cruising and fishing enthusiasts.

This is a perfect boat for island hopping in the Bahamas, cruising around the ICW or even doing the Great Loop. This very experienced owner has found his next boat and this is a deal of a lifetime, this boat is better than new and available with all upgrades and extended warranty at a great price!

Call today for a personal tour and more info!

Please see a list of upgrades below:

- Joystick docking with upgraded bow thruster
- Extended Volvo Penta Warranty until December 2022
- Extended Passport Premier service contract on A/C, fridge, freezers, generator, electronics and other mechanical components until December 2022
- Optional "L" lounge in the cockpit
- Teak table in the cockpit convertible into sunbed with custom storage in mezzanine
- Custom removable live well plumbed into the vessel with quick connect fittings
- Taco outriggers
- Painted hull sides and boot stripe
- Ceramic coating on entire vessel
- Upgraded vinyl thru out entire helm area and cockpit
- Upgraded helm A/C system
- Additional outlet in the forward cabin
- Upper and Lower Cockpit Carpet
- Macerator for Stbd. Floor box
- Upgraded cockpit sun shade and aft storage cover
- Additional rod holders across the transom
- Upgraded Auto Retract trim tabs
- Upgraded Galley Cabinets with glass shelf above sink
- Upgraded Refrigerator / freezer for aft mezzanine seat
- Upgraded Wetbar w/sink, fridge, and three tackle drawers
- Stbd Wet Bar Refrigerator
- Upgraded stainless steel anchor with 350' rode and stainless steel chain
- Upgraded Electronics package with:
 - Twin Garmin 7616 touch screen
 - Additional 7" Garmin / Volvo display
 - Upgraded Garmin Fantom Radar
 - Upgraded 1kW Chirp transducer

- XM Weather and Radio
- AIS
- Upgraded Fusion stereo with additional subwoofers, amplifiers and speakers in the cockpit w/ Fusion remotes and 3 zones.
- Upgraded FLIR night vision camera
- Underwater lights
- ACR Remote Spotlight

Основная информация

Тип судна: Крейсер

Модельный год: 2018

Год постройки: 2018

Страна: United States

Размеры

Длина общая: 43' 0" (13.11m)

Ширина: 15' 4" (4.67m)

Скорость, вместимость и масса

Водоизмещение: 30000 Pounds

Вместимость воды: 130 Gallons

Вместимость сточного бака: 50 Gallons

Объем топливного бака: 600 Gallons

Размещение

Всего кают: 2

Спальные места: 4

Всего ком. состава: 1

Корпус и палуба

Материал корпуса: Fiberglass

Информация о двигателе

Двигатели: 2

Производитель: Volvo

Модель: D11

Тип двигателя: Inboard

Тип топлива: Diesel

ПОДРОБНОЕ ОПИСАНИЕ

Exterior

- Swim Platform 30" with built-in ladder
- Starboard Wet Bar options with storage
- Starboard Aft prep center tackle drawers
- Teak upper cockpit table for curved companion lounge
- Refrigerator/freezer for aft mezzanine seat
- Xenon Underwater 12V 50W Lights
- Port lights with privacy inserts (4)
- Bow Thruster
- Anchor locker fresh water washdown
- Lenco 12V hydraulic recessed trim tabs with zincs
- Two (2) Lewmar deck hatches with adjusters, built-in Ocean Air screens and privacy covers
- One (1) flush acrylic deck skylight
- Molded-in fiberglass bow pulpit with stainless steel roller
- One-piece welded 316L SS 1" bow rail with pulpit, staff & burgee holder
- Flush forward anchor rode locker with overboard drain
- Automatic rope/chain anchor windlass system with operation from foredeck foot pedal and remote switch
- Tiara custom composite windshield frame with 1/4" tempered safety glass, handrails on side wings, (7) wiper system with two (2) washer/wipers
- Tiara hinged helm console designed for a full electronics package, drink holder, and 18' stainless steel destroyer
- Cockpit shades
- Deck chairs (2)
- Upper cockpit wet bar includes sink with lid, drawer storage (underneath), storage aft with door, 2 receptacles, cutting board aft and 120V GFI outlet
- Centerline entry to salon with acrylic sliding companionway door, lock, screen door and privacy cover
- Fiberglass companionway door shroud with chart flat and drink holders
- Port curved companion lounge with forward facing swivel seat
- Port aft facing mezzanine seat with refrigerator/ freezer (under seat) and storage (under step)
- TV jack/outlet located behind helm seat
- 12V Accessory outlet located behind helm seat
- Drop down engine room access hatch from the upper cockpit
- USB combo port • Weather covers for helm console and all cockpit furniture
- Additional six (6) exterior sound speakers
- Cruising hardtop (includes side & aft enclosures), LED spreader lights, underside lighting and
- Lewmar opening hatch

- Molded-in steps to deck walkways, port and starboard
- Fiberglass covering boards
- Cockpit coaming bolsters
- Cockpit LED courtesy lighting with remote control
- 120V GFI outlet
- Hot and cold cockpit shower
- Fresh water washdown outlet with 25 ft coiled blue hose
- Raw water washdown outlet with 25 ft coiled yellow hose
- Self draining cockpit with side scupper drains
- Two (2) insulated flush floor storage boxes
- Two (2) large floor hatches split into four smaller hatches with gas assisted actuators
- Aluminum backing plate, 24 x 24, laminated in cockpit floor
- Aft lazarette hatch
- Molded-in transom door and gate
- Rod storage under pedestal berth (4)
- Cockpit coaming bolster with upgraded vinyl
- 3 piece Drop Curtain

Salon

- Teak companionway entry steps with hinged storage below and trash receptacle
- Teak interior
- U-shaped lounge/dinette seating to port with storage below high gloss table that seats 4-5 & Converts to a lower berth with backrest converting to a Pullman
- LCD 32" TV
- Polk audio 3000 HT surround bar with wireless subwoofer, Samsung BluRay Wi-Fi DVD player
- Marine Air Systems 12,000 BTU air conditioner w/ reverse cycle heat, controls in aft port bulkhead
- Salon Ultraleather
-

Galley

- Corian countertop stainless steel under mount sink with Corian cover and hot and cold water faucet
- Under counter storage and aft galley pantry
- One (1) Utensil Drawer
- Egyptian beige galley tile black splash
- Optional Galley cabinets with glass shelf

- Ice maker
- Microwave/convection for standard oven
- Vitrefrigo Oval refrigeration drawers and refrigerator/freezer combination
- Two (2) burner electric cooktop with Corian cover and safety shut off switch
- Three (3) Fridge and (1) Freezer drawer under counter

Guest Stateroom

- Entry from salon
- Two (2) bunks (upper & lower) with Inner Spring Mattresses, coverlets, and two (2) box pillows
- Hanging locker with shelves
- Storage under lower berth
- Two (2) reading lights independently switched

Head

- Full frame doors with dual entry from master stateroom and salon
- Full fiberglass head with glass shower door, stall shower with sump pump / drain, and integrated Seat
- Corian Vanity countertop with Corian sink and storage below
- Mirrored, lighted vanity / medicine cabinet above sink
- Upper linen storage cabinet
- Vacuflush toilet
- Exhaust fan
- Macerator for Waste

Helm

- Stidd Power forward helm seat electronically actuated fore, aft and vertically
- Air Conditioned helm A/C 32k BTU
- Electronics package
- Bow thruster Controls
- 18" SS steering wheel

Electronics

- Garmin electronics package: radar, sounder, plotter
- (2) GPSMAP 7616 16" touchscreen displays
- 17X High sensitivity GPS

- Upgraded Garmin 300 VHF radio
- Upgraded Additional Garmin / Volvo display
- 1kw Chirp transducer
- GHP 10 autopilot and display
- Upgraded Garmin Fantom digital open array radar
- ACR RCL 100 remote spotlight (mounted on bow)
- Upgraded Fusion stereo system w/ amplifiers, 3 zones and subs.

Electrical

- 12v DC and 120V / 240V AC electrical system with master distribution panel located portside aft of the dinette
- One (1) 240v 50 Amp 65' Dockside Power Cord with Glendenning Cable Coiler and Adaptor for 30 Amp
- Cable TV inlet / outlets • Battery charger 80 amp
- 12v two (2) bank battery system for engine, (5) five house batteries
- Battery parallel system
- Electrical bonding system
- Reverse polarity indicator
- High output alternators: 160 amps each

Engine Room

- Twin Volvo Penta D11 725 HP w/extended engine warranties through December 2022
- Cummins ONAN 11.5kw generator with sound shield w/extended service contract through December 2022
- Main engines and generator recently serviced, oil changes, all filters
- Fully electrical hydraulic actuated deck engine room hatch
- Drop down engine room access hatch from upper cockpit
- Engine room acoustical insulation with overhead fiberglass liner
- Racor fuel filters
- Vibration isolation mounts on mains and generator
- Oil changing system for mains and generator
- Two bilge fans
- Three (3) automatic/manual bilge pumps with monitors on helm
- FE-241 agent auto/manual fire extinguishing system in engine room
- Water heater

Disclaimer

The Company offers the details of this vessel in good faith but cannot guarantee or warrant the

accuracy of this information nor warrant the condition of the vessel. A buyer should instruct his agents, or his surveyors, to investigate such details as the buyer desires validated. This vessel is offered subject to prior sale, price change, or withdrawal without notice.

Mechanical Disclaimer Engine and generator hours are as of the date of the original listing and are a representation of what the listing broker is told by the owner and/or actual reading of the engine hour meters. The broker cannot guarantee the true hours. It is the responsibility of the purchaser and/or his agent to verify engine hours, warranties implied or otherwise and major overhauls as well as all other representations noted on the listing.

Исключения

При продаже яхты исключаются личные вещи владельца.

Отказ от ответственности

Компания предоставляет описание судна или яхты добросовестно, но не может гарантировать точность этой информации, а также не ручается за техническое состояние. Покупатель должен проинструктировать своих агентов или оценщиков исследовать представленную информацию более подробно, по собственному желанию. Продажа судна или яхты, изменение цены или снятие с продажи будет происходить без предварительного уведомления.

ФОТОГРАФИИ

Dinette with Pullman



Salon



Dinette



Galley



Galley



Fridge and Freezer



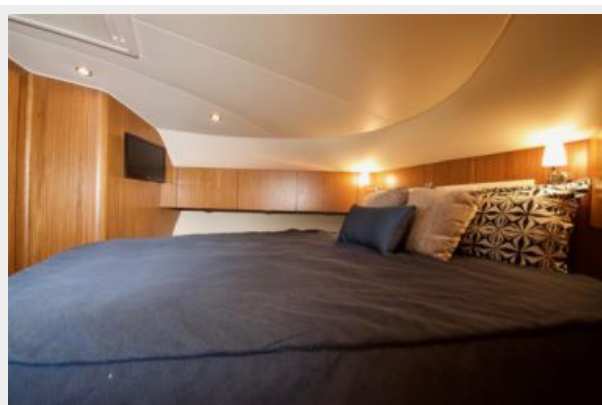
Trash Bin



Master Stateroom



Master Stateroom



Master Stateroom Storage



Master Stateroom Storage



Guest Quarters



Master Stateroom Storage



Head



Head



Helm View



Helm



Helm



Helm



Joystick Controls



Helm



Custom Table Storage



Seating



Cockpit



Siderails



Cockpit



Cockpit



Foredeck



Foredeck



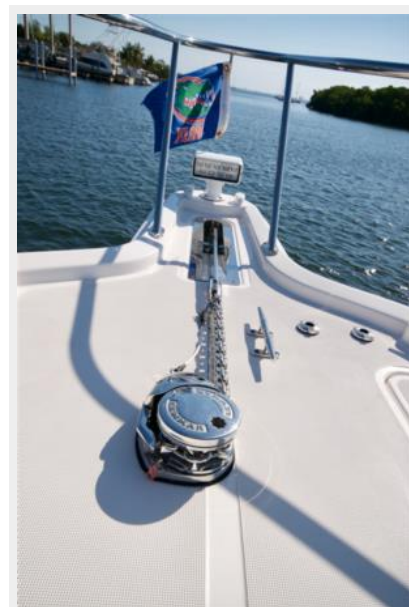
Foredeck



Antennas



Windlass



Fresh Water Washdown



FLIR Night Vision



Cockpit



Cockpit Seating



Cockpit Seating



Sun Shade



Portable Live Well



Portable Live Well Quick Connection



Engine Room



Engine Room



Engine Room



Engine Room



Engine Room



Engine Room



Engine Room



Engine Room



Port Profile



Aft Profile



Aft Profile



Aft Profile



Forward Profile



Cockpit Storage Cover



КОНТАКТЫ

Андрей Шестаков (Andrey Shestakov) – ведущий яхтенный брокер отдела продаж яхт и судов компании Shestakov Yacht Sales Inc. Официальный представитель Shestakov Yacht Sales Inc. для русскоговорящих клиентов в центральном офисе компании в Майами/Форт Лодердейл/Флорида/США.

Контактная информация

Email: andrey@shestakovyachtsales.com

Web: shestakovyachtsales.com

Телефоны

Краснодарский край: **+7(918)465-66-44**

США, Майами, Флорида: **+1(954)274-4435**

Время работы

Понедельник – Суббота: **9:00 - 21:00**
EDT

Воскресенье: **Закрито**

Адрес



Harbour Towne Marina, 850 NE 3rd St,
STE 213, Dania, FL 33004