

DOMINO — MALCOLM TENNANT MULTIHULL DESIGN



Судостроитель:

MALCOLM TENNANT MULTIHULL DESIGN

Год постройки: 2009

Модель: Катамаран

Цена: ЦЕНА ЯХТЫ ПО ЗАПРОСУ

Местонахождение: Mexico

Длина общая: 65' 0" (19.81m)

Ширина: 23' 0" (7.01m)

Макс. осадка: 4' 0" (1.22m)

Крейс. скорость: 10 Kts. (12 MPH)

Макс. скорость: 22 Kts. (25 MPH)

Купить Domino — MALCOLM TENNANT MULTIHULL DESIGN а также выбрать подходящую вам яхту из нашего каталога яхт вам поможет опытный яхтенный брокер Андрей Шестаков. На сегодняшний день компания Shestakov Yacht Sales Inc. имеет большое количество яхт в собственном списке продаж, а также тесно сотрудничает со всеми крупными яхтенными производителями по всему миру.

Для того чтобы купить яхту Domino — MALCOLM TENNANT MULTIHULL DESIGN а также проконсультироваться по любому вопросу связанному с покупкой, продажей, чартером яхт позвоните по телефону **+7(918)465-66-44**.

ОГЛАВЛЕНИЕ

ОГЛАВЛЕНИЕ	2
ХАРАКТЕРИСТИКИ	4
Основная информация	4
Размеры	4
Скорость, вместимость и масса	4
Размещение	4
Корпус и палуба	4
Информация о двигателе	5
ПОДРОБНОЕ ОПИСАНИЕ	6
Basic Description	6
Vessel Walkthrough	6
Galley	7
Accommodations	7
Deck Equipment	8
Electronics and Helm	9
Electrical Systems	9
Engines	10
Fire Suppression, Alarm System and Safety	11
Anchoring Systems	12
Lightning Protection System	12
Mechanical Disclaimer	12
Disclaimer	12
Исключения	13
Отказ от ответственности	13
ФОТОГРАФИИ	14
Profile at Anchor	14
Starboard Profile	14
Stern View	14

Starboard Bow View	14
Profile at Anchor	14
Tender	14
Foredeck	15
Refinished Floors	15
Refinished Floors	15
Refinished Floors	15
Refinished Floors	16
Refinished Floors	16
Cruising	23
КОНТАКТЫ	24
Контактная информация	24
Телефоны	24
Время работы	24
Адрес	24

ХАРАКТЕРИСТИКИ

Основная информация

Тип судна: Катамаран

Модельный год: 2009

Год постройки: 2009

Страна: Mexico

Номер регистрации в береговой
охране: 1222806

Открытая палуба мостика: Да

Кубрик: Да

Размеры

Длина общая: 65' 0" (19.81m)

Ширина: 23' 0" (7.01m)

Макс. осадка: 4' 0" (1.22m)

Длина привального бруса: 65' 6"
(19.96m)

Скорость, вместимость и масса

Крейс. скорость: 10 Kts. (12 MPH)

Макс. скорость: 22 Kts. (25 MPH)

Водоизмещение: 48000 Pounds

Вместимость воды: 422 Gallons

Объем топливного бака: 2955 Gallons

Размещение

Всего кают: 2

Всего ком. состава: 1

Корпус и палуба

Материал корпуса: Fiberglass

Комплектация корпуса: Катамаран

Информация о двигателе

Двигатели: 2

Производитель: John Deere

Модель: 6081 AFM-M2 rating

Тип двигателя: Inboard

Тип топлива: Diesel

ПОДРОБНОЕ ОПИСАНИЕ

Basic Description

2009 65 Ft. Malcom Tennant Domino 20

This is a long-range EXPEDITION vessel that, to quote it's owner/co-designers "is living proof that a well-designed powercat is a very desirable cruising platform: faster, more fuel-efficient, safer, more comfortable, more stable than any monohull in the same price bracket, with a go-anywhere and self-sufficient mentality."

"**Domino**" has cruised almost non-stop for 9 years, clocked 53,000 NM through 45 countries, completed 3 Transpacs, ditched a dozen hurricanes and shouldered a rogue wave, dropped anchor some 800 times....thus proving the point: powercats are a very desirable long-range cruising platform!

"**Domino**" has just returned in record time from a quick trip to Acapulco, making the 900 nm passage in 2.5 days to outrun a storm. She will only remain in the water until Mid-March, so plan your trip to see her now!

She remains impeccably maintained and cruise-ready. All she needs is the next adventurous couple or small family who is ready to take on the world!

Full build, performance and maintenance records.

Vessel Walkthrough

Enter aft from either side through the sugar scoops on either hull, up through molded steps into the spacious cockpit. This is where you can comfortably host up to 50 people for cocktails or a meal. Mirror image engine rooms are accessed on either hull.

Walk into the extremely spacious one-level living, cooking and helm space. Through the main salon doors and to port is the full head and shower. Continuing forward is the master stateroom. Directly across to starboard is the full galley. Forward of that is the dinette and seating area. Forward of the main salon and to midships is the full interior helm station. Access to deck from portside sliding door with foldaway ladder.

Additional accommodations in a junior stateroom with loft in the portside hull. Starboard side hull features a full workshop, easily convertible to an additional sleeping area.

Incredible spacious, light and airy design with 7.5' headroom and expansive views throughout. Ventilation and heating in the main interior areas ensure comfort at anchor or underway.

Flybridge and upper helm is accessed through a molded ladder on the portside of the bulkhead

forward of the cockpit. Tender and kayak storage space, with crane to assist in raising and lowering your toys!

Walking forward on either side of the main living area through wide side decks with full hand holds. Spacious forward deck allows easy access to the custom anchoring system and additional storage forward in either hull.

Evidence of stout build quality everywhere – everything feels solid and capable of ocean passing, and has been tested in all cruising conditions!

Galley

Galley is located to starboard in the main deck.

- Stove/Oven: Dickinson Mediterranean 3-burner gas
- Sink: Scandvick double SS
- Fresh water pump: Manual
- Refrigeration: Top-loading Isotherm box, fresh and saltwater cooled
- Freezer: (in port hull) Top-loading Isotherm box, fresh and saltwater cooled
- Toaster Oven: Black & Decker 110v
- Gas Alarm: Trident solenoid

Other equipment: Breville Breadmaker, rice cooker, deep fryer, Soda stream soda maker, Nespresso aeruccino coffee maker, Foodsaver Vacuum sealer, cordless vacuum, blender, mini food processor, electric kettle, yogurt maker.

Accommodations

Master stateroom is on main deck to port. One-level floor plan for living areas. Sleeps up to 8 people.

- Main cabin – walk-around queen bed
- Port hull: 1 single berth; 1 double berth. Access port to forward deck.
- Starboard hull: Workshop and Northern Lights Genset; 1 double berth.
- Main Salon: 37" x 50" table with seating for 6 on starboard side. 2 person helm bench; watch/captain berth to port.
- Heater: Dickinson Cabin diesel heater 6,000 to 17,000 BTU
- Generous Storage in all areas under seating and benches

Ventilation – Extensive cabin ventilation (natural forced ventilation):

- 5 vents with double latches with baffles surround forward portion of living area
- 2 extraction fans
- 8 Caframo fans installed throughout

- 2 Ocean Breeze Air Conditioner compressors (12,000 BTUs) – NEVER USED, needs service

Head:

Head is located to port, just inside entrance to the main salon from the aft deck and cockpit area.

- Number of heads: 1
- Dometic Fresh Water Vacuflush
- Shower: 1
- Holding Tanks: (2) 1 black and 1 grey water. Gravity drained. Pump-out station.
- Water Heater: Isotemp 24 ltrs 110v and heat exchanger
- Water collection system for rain water collection – in addition to HRO system!

Glazing on Windows/Ports:

- Diamond Seaglaze tempered glass
- Helm: 7 x 12 mm
- Sides: 13 x 10 mm UV
- Aft: 9 mm
- Doors: 9 mm
- Windshield Wipers: Imtra Exalto (x3) 56 cm blades, with fresh water washdown

Deck Equipment

Aft Deck:

- Spacious and comfortable outside living area
- Large sink
- Live bait tank
- Seating/dining for up to 12 people
- Dual fiberglass propane tanks in starboard locker
- Magma BBQ Avalon smoker
- Fresh water quick connect
- Laundry Spinner, easily replaced with washing machine

Deck Equipment and Accessories:

- Tender: Custom FG/Sandwich 3.3 meter with boarding platform
- Outboard motors: (1) Tohatsu 18 hp (2-stroke); (1) Mercury 4hp (4-stroke)
- Davit: x 2 Transom and Flybridge
- Hoist Crane: 2,000 lbs., on flybridge
- Deck Wash: On bow and aft
- Deck Shower: Aft
- Cockpit cushions

- Bimini on flybridge
- Extensive amount of Mooring lines and fenders
- Diving Gear – airline hookah with 2 x 20m hose, Honda generator and float
- 2 Sea kayaks
- 1 Knee board
- Mosquito nets/netting
- Wine storage for >100 bottles!
- Sewing machine
- Complete dinnerware
- Full Library of Owners Manuals, Cruising Guides, Technical Books and Maintenance Logs
- Extensive inventory of spare parts for all systems

Electronics and Helm

Extensive Furuno Suite:

- Displayso Helm: TZT14, MFD 12, Furuno RD33 (touchscreen, multi-function display)o Flybridge: MFD 12, Furuno RD30 (touchscreen, multi-function display)o Loaded with charts and waypoints
- Autopilot: Simrad AC 12 (+backup)o 2 x AP 28 control unitso RC 42 Rate compass
- Depth Sounder / Fish Finder (port hull): Furuno DFF3, R199 2kw transducer. Range = 800 m.
- Depth Sounder (starboard hull) Airmar DT 820 (depth and temperature)
- Radar: Furuno with 6' array antenna DRS12A with DRS 12A power supply
- Satellite GPS: Furuno SC50
- Weather Station: Airmar PB 150
- GPS: 3
- Stereo: Wired cabin / aft deck and Bose bluetooth
- VHF: Icom IC-M604 (x2) with dedicated antenna
- Handheld VHF: IC-M88 (x2)
- HF Comm: Icom IC-718 whip antenna
- Satellite Phone: Iridium Go (2017)
- AIS Transponder: Furuno FA50 with dedicated antenna
- Navigation: PC computer loaded with SAS Planet and Open CPN, tacks and files
- Binoculars: Fujinon with stabilizer

Electrical Systems

Domino is wired for 110vAC / 24vDC but adapts to all world wide currents, and has been tested!

- Batteries: House 6 x Odyssey PC 1800 (2012). New replacements on order and will be installed. 640 amp hours @ 24v.
- Engine Start Batteries: Odyssey PC 1700 (2014) 875 CCA

- Genset Battery: Odyssey PC1200 x 2
- Generator: Northern Lights 12kw Lugger
- Alternators: House: Balmar 140 amp @ 24v, 1 per engine
- Alternator: Engine Start: John Deere 12v, 1 per engine
- Inverter/Charger: Magnum MS4024, 400 watts @ 110v (portside)
- Charger: Victron Centaur (x2) 24v/100W
- Shore power input: 110vAC and 220vAC
- Watermaker: Horizon Seafari 1400-2. 60 gallons (240 ltr)/hour with commercial pre-filter
- Solar Panels: 4 x 200 watt Suntech Outback FlexMax 60 charger controller
- Additional: Galvanic Isolator
- Air-Conditioner: (Never used, needs service) 2 x Ocean Breeze Air Conditioner compressors (12,000 BTUs)
- Laundry Spinner: Aft deck, easily replaced with washing machine
- Engine Room Ventilation: Jabsco extraction fans
- Washer/Dryer: Splendide 2100XC, 11 lb. capacity, vented (starboard)
- Bilge pumps: 13 electric, with alarms

Engines

- Engines: John Deere
- # of engines: (2)
- Engine Model: 6081 AFM – M2 rating (see note below)
- Engine Year: 2008
- Engine Type: Inboard
- Fuel Type: Diesel
- HP: 300 x 2
- Cruising Speed: 10 knots
- Maximum Speed: 22 knots
- Engine Hours: 5,300
- Propellers: 34 x 42 x 4 blades (2)
- Engine Controls: Glendinning Electronic engine control at (1) main interior helm station; (1) flybridge station; (3) remote stations – bow, stern and flybridge
- Steering system: Hydrive Pack 2 TM-9 with HD-250 cylinders
- Transmission: ZF 280-1 with trolling valve
- Aquadrive anti-vibration
- Dripless PSS shafts
- Meticulously maintained, all service records available
- Fuel transfer and polishing system: 4 main tanks, 2 day tanks fed with Dayton pump, FS1218 Cummins filter
- Engine fed with triple stage filtration system before engine mounted filter
- Oil change system: Reverso pump in each engine room
- Note: Engines can easily be reprogrammed for higher horsepower. M3 rating = 330 hp; M4 rating = 375 hp

- Engine Room Ventilation: Jabsco extraction fans

Fire Suppression, Alarm System and Safety

Fire Suppression Systems:

Automatic: Fireboy

- 1 in each engine room
- 1 in genset locker
- 1 in house batter locker

Manual:

- 2 in port hull
- 1 in starboard hull
- 1 in main cabin
- Fire blanket in galley

Security, Monitoring and Alarm System:

- Paradox Marine Magellan with remote control, flybridge siren, flashing alarm light
- Surveillance camera aft deck
- Monitoring camera in each engine room
- Search light: Jabsco
- Deck lights: x2
- Bow lights: x2
- Horn: Hailer
- Black, grey, fresh water and fuel tank level monitoring systems

Safety Equipment:

- Liferaft: Zodiac Solas 6-person. Serviced January 2016, EPIRB fitted
- Sea Anchor: Fiorentino Para-Anchor 21'
- Jacklines
- Lifejackets: (7) all sizes, 4 auto inflate
- Harnesses: 2
- EPIRB: Yes (Jan. 2016)
- MOB Retrieval: Lifesling; throwrope
- MOB Light: Yes
- Bilge pumps: 13 electric, with alarms
- Swim ladder: Yes, deployable by swimmer 3 steps underwater
- Handheld torch
- Manual emergency tiller: Yes

Anchoring Systems

- Anchor #1: 75 kg Ancora Latina/Raya with 90m ½” chain grade 43, 150m of 1 ¼” rode
- Anchor #2: 44 kg Ancora Latina/Raya with 120m 3/8” chain grade 43, 75m of 1” rode
- Anchor #3: Fortress 37 with 10, 3/8” chain and 100m of 5/8” rode
- Anchor #4: Fortress 125 with 20m 10mm chain and 60m of 1”rode
- Anchor #5: Guardian G37 with 10m 5/16” chain and 50m of 9/16” rode
- Anchor Bow Rollers: (3) Single SS rollers
- Custom brake and tensioner system for anchoring
- Windlass: (x2) Maxwell VWC 4000 with helm control and auto-anchor chain counter
- Winches: (x2) Maxwell VWC 1500, 1 on each coking aft platform
- Stern line: 200m Quickline “Flatline” + extensive amount of line/rode
- Chafing gear
- High pressure saltwater pump for anchor washdown

Domino has anchored over 800 times in her 9 years of life – these systems have been tested and proven in all conditions!

Lightning Protection System

Domino was designed with an extensive Lightning Management System – on the theory that they would be hit by lightning, the purpose was to manage the hit!

Custom designed by Ewen Thomson ()

- Aerials: 5 aerials, connected to copper tube encircling the boat
- Custom Faraday cage for electronics
- Spark electrodes: 10 “sidearc” dispersion electrodes
- Arrestors and diodes: On every antenna and electrical/electronic device

Mechanical Disclaimer

Engine hours are as of the date of the original listing and are a representation of what the listing broker is told by the owner and/or actual reading of the engine hour meters. The broker cannot guarantee the true hours. It is the responsibility of the purchaser and/or his agent to verify engine hours, warranties implied or otherwise and major overhauls as well as all other representations noted on the listing brochure.

Disclaimer

The Company offers the details of this vessel in good faith but cannot guarantee or warrant the accuracy of this information nor warrant the condition of the vessel. A buyer should instruct his

agents, or his surveyors, to investigate such details as the buyer desires validated. This vessel is offered subject to prior sale, price change, or withdrawal without notice.

Исключения

При продаже яхты исключаются личные вещи владельца.

Отказ от ответственности

Компания предоставляет описание судна или яхты добросовестно, но не может гарантировать точность этой информации, а также не ручается за техническое состояние. Покупатель должен проинструктировать своих агентов или оценщиков исследовать представленную информацию более подробно, по собственному желанию. Продажа судна или яхты, изменение цены или снятие с продажи будет происходить без предварительного уведомления.

ФОТОГРАФИИ

Starboard Profile



Profile at Anchor



Starboard Bow View



Stern View



Profile at Anchor



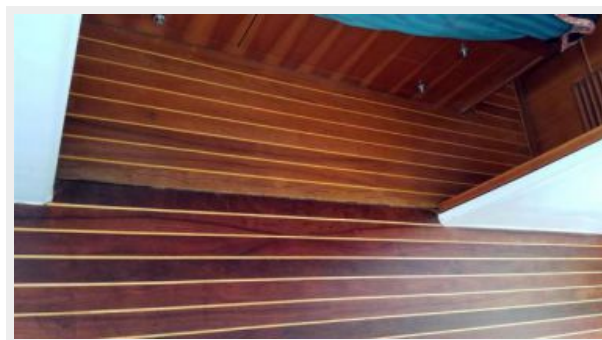
Tender



Foredeck



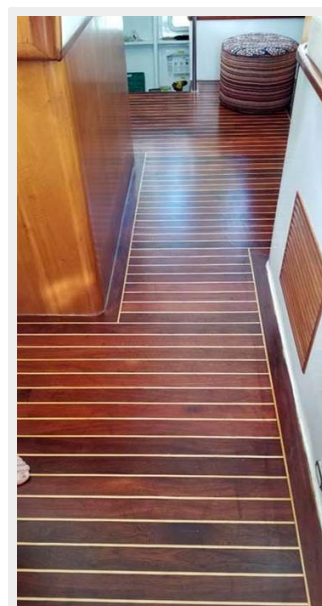
Refinished Floors



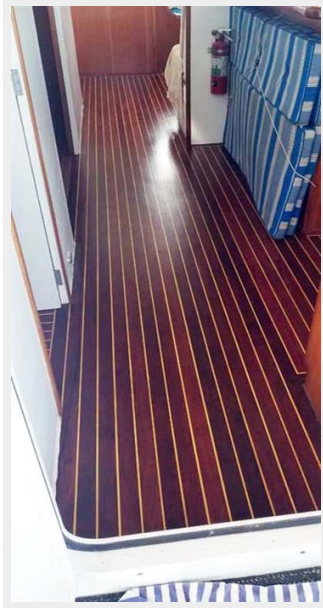
Refinished Floors



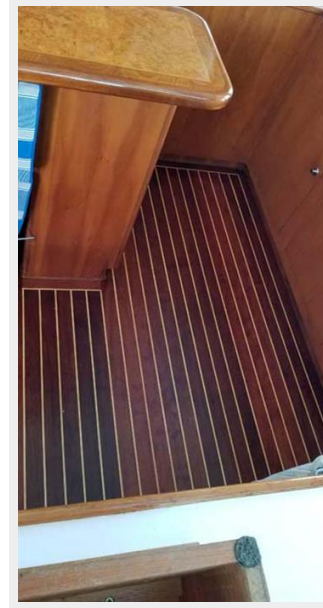
Refinished Floors

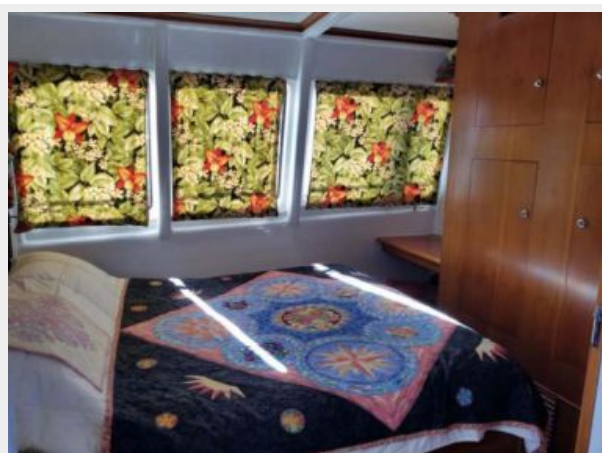


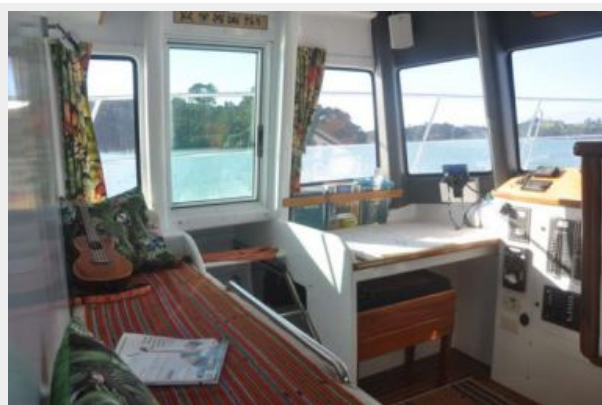
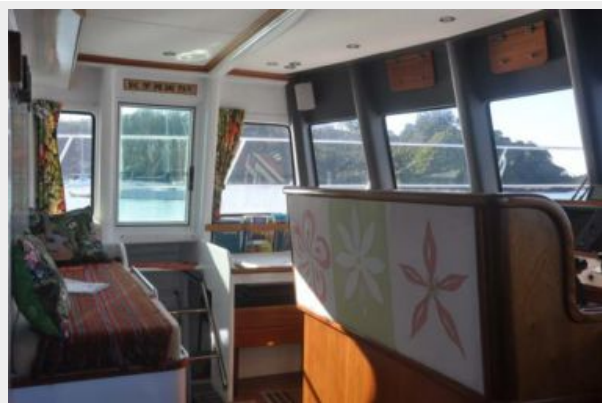
Refinished Floors



Refinished Floors



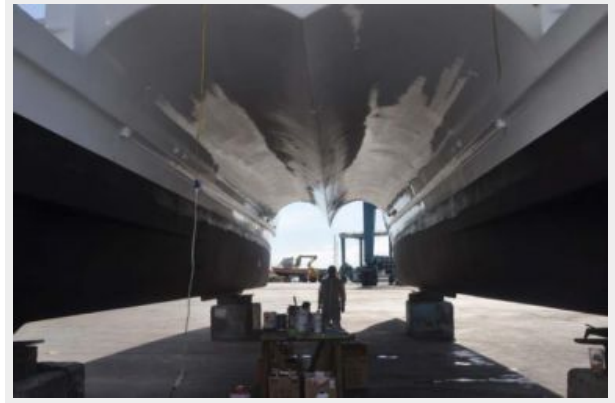














Cruising



КОНТАКТЫ

Андрей Шестаков (Andrey Shestakov) – ведущий яхтенный брокер отдела продаж яхт и судов компании Shestakov Yacht Sales Inc. Официальный представитель Shestakov Yacht Sales Inc. для русскоговорящих клиентов в центральном офисе компании в Майами/Форт Лодердейл/Флорида/США.

Контактная информация

Email: andrey@shestakovyachtsales.com

Web: shestakovyachtsales.com

Телефоны

Краснодарский край: **+7(918)465-66-44**

США, Майами, Флорида: **+1(954)274-4435**

Время работы

Понедельник – Суббота: **9:00 - 21:00**
EDT

Воскресенье: **Закрито**

Адрес



Harbour Towne Marina, 850 NE 3rd St,
STE 213, Dania, FL 33004