

2015 TIARA — TIARA



Builder: TIARA

Year Built: 2015

Model: Cruising Yacht

Price: PRICE ON APPLICATION

Location: United States

LOA: 50' 0" (15.24m)

Beam: 15' 11" (4.85m)

Max Draft: 4' 8" (1.42m)

Cruise Speed: 27 Kts. (31 MPH)

Our experienced yacht broker, Andrey Shestakov, will help you choose and buy a yacht that best suits your needs 2015 Tiara — TIARA from our catalogue. Presently, at Shestakov Yacht Sales Inc., we have a wide variety of yachts available on our sale's list. We also work in close contact with all the big yacht manufacturers from all over the world.

If you would like to buy a yacht 2015 Tiara — TIARA or would like help answering any questions concerning purchasing, selling or chartering a yacht, please call +1(954)274-4435

TABLE OF CONTENTS

| | |
|------------------------------|----|
| TABLE OF CONTENTS | 2 |
| SPECIFICATIONS | 4 |
| Overview | 4 |
| Basic Information | 4 |
| Dimensions | 4 |
| Speed, Capacities and Weight | 4 |
| Accommodations | 5 |
| Hull and Deck Information | 5 |
| Engine Information | 5 |
| DETAILED INFORMATION | 6 |
| Aft Cockpit | 6 |
| Salon | 6 |
| Galley | 7 |
| Master Stateroom | 7 |
| Master Stateroom Head | 8 |
| VIP Stateroom | 9 |
| Port Stateroom | 9 |
| Starboard Head | 10 |
| Helm Station | 10 |
| Electronics | 11 |
| Deck Equipment | 12 |
| Hardtop | 12 |
| Foredeck | 13 |
| Plumbing | 13 |
| Electrical Equipment | 13 |
| Transom Garage | 14 |
| Engine Room | 14 |
| Additional Information | 15 |

| | |
|----------------------|----|
| Disclaimer | 15 |
| Exclusions | 15 |
| Disclaimer | 15 |
| PHOTOS | 17 |
| Cockpit No Shade | 17 |
| Cockpit Shade Open | 17 |
| Helm | 17 |
| Salon Sunroof Open | 17 |
| Salon Sunroof Closed | 17 |
| Galley | 17 |
| Master Stateroom | 18 |
| Master Head | 18 |
| VIP Stateroom | 18 |
| VIP Head | 18 |
| Transom | 18 |
| Third Stateroom | 18 |
| Cockpit Controls | 19 |
| Engineroom | 19 |
| Bow Sunpad | 19 |
| Night Vision Camera | 19 |
| Windlass | 20 |
| Battery Chargers | 20 |
| CONTACTS | 21 |
| Contact details | 21 |
| Telephones | 21 |
| Office hours | 21 |
| Address | 21 |

SPECIFICATIONS

Overview

This luxurious 50' Tiara features the 3 stateroom, 2 head layout and aft master stateroom with walk-around berth. Forward VIP stateroom berth can adjust to either side-by-side or queen berth. The guest stateroom has upper and lower bunks. Features include:

- Stidd electric Captains chair
- Sunroof
- Hydraulic Swim Platform
- Garmin Electronics and Flir Night Vision Camera
- Joystick Control
- Sure Shade Telescoping Electric Aft Sunshade

Basic Information

Category: Cruising Yacht

Sub Category: Coupe

Model Year: 2015

Year Built: 2015

Country: United States

Dimensions

LOA: 50' 0" (15.24m)

Beam: 15' 11" (4.85m)

Max Draft: 4' 8" (1.42m)

Speed, Capacities and Weight

Cruise Speed: 27 Kts. (31 MPH)

Displacement: 45000 Pounds

Water Capacity: 200 Gallons

Holding Tank: 86 Gallons

Fuel Capacity: 654 Gallons

Accommodations

Total Cabins: 3

Total Heads: 2

Hull and Deck Information

Hull Material: Fiberglass

Engine Information

Engines: 2

Manufacturer: Volvo Penta

Model: D11B2-A MP

Fuel Type: Diesel

DETAILED INFORMATION

Aft Cockpit

- Joystick aft cockpit control \$17,000 option
- Sureshade telescopic electric aft sunshade
- Teak over fiberglass
- Bench seating aft with cushions, stainless steel railing, cover and drink holders, port and starboard
- Stainless steel stern cleat, port, and starboard
- Handheld shower, starboard locker
- CCTV camera, overhead
- Gate to the swim platform, port, and starboard
- 50-Amp Cable master, port locker with a control switch
- Shore power breaker, port locker
- GFI reset in port locker
- Dockside cable television inlet, port locker

Salon

- Solid mahogany wood floors
- (2) Skylights port, (1) starboard to accommodation area
- White leather sofa, port, with storage under and high/low table
- 120/220V A.C. electrical panel with volts and amps gauges
- 12/24V D.C. electrical panel with volts and amps gauges
- Tank Monitor with grey, black and freshwater levels
- (3) Air conditioning control panels
- (3) 110V GFI resettable outlets
- Samsung LCD television
- Samsung DVD player
- Garmin I-Pod docking station
- Port and starboard stereo speakers
- Revere Coastal 6-person life raft

- Overhead hatch
- Johnson bilge high water alarm
- Sunroof

Galley

- Corian counter with dual stainless steel sinks and hot and cold-water faucet
- Waste discharge plaque
- (2) Storage lockers above the stove
- (2) 110V outlets
- Dry chemical fire extinguisher
- Storage lockers starboard
- Isotherm 2-drawer refrigerator
- Kenyon 3-burner electric stove top
- Recessed overhead lights

Master Stateroom

- Queens size berth with mattress, pillows, bedspread, indirect lighting under, storage under
- Dead light with small porthole in alcove, port and starboard, with blinds
- Splendide 2100XC washer/dryer combo
- Built in cabinetry port with 3 drawers and locker with shelves
- 110V outlets
- Reading lamps forward and aft of the berth
- Night stands forward and aft of the berth with storage
- Carbon monoxide alarm
- Smoke alarm

- Bilge access forward
- Samsung television
- Samsung Blue Ray Player
- Central vacuum hose and attachments
- Television for the aft deck
- Cedar lined locker, forward, with light
- Sky light at the entrance to the helm station (port)
- Marine Air A/C control panel

Master Stateroom Head

Access from the master stateroom

- Vanity with raised sink, single lever faucet and veneer countertop
- VacuFlush head
- (5) Overhead lights
- Dometic Head with control panel
- Porthole in alcove with blinds
- Fiberglass walls with marble trimmed recess
- Mirror on forward bulkhead
- (2) Lockers above the porthole

Shower stall includes:

- The shower head is on a hose on adjustable height rod
- Diverter valve for overhead shower nozzle
- Towel rack
- Soap rack
- Exhaust blower
- Teak grate and teak bench seat

- Two overhead lights
- Glassdoor

VIP Stateroom

- (2) Single berths forward with drawers under each Made to slide together for a couple
- (2) Drawers, forward
- (2) Adult Type II life jackets
- Marine Air air conditioning control panel
- Samsung LCD television
- Samsung Blue Ray player
- Storage lockers, port and starboard
- Indirect lighting
- Upholstered forward bulkhead with two reading lights
- Cedar-lined hanging locker, starboard, with light
- Overhead hatch with screen and blackout cover
- Kidde 10BC dry chemical fire extinguishers
- Smoke alarm
- CO monitor
- Porthole in alcove with blinds, port and starboard

Port Stateroom

- Upper and lower single berth with mattress, pillows, and bedspread
- Storage under the lower berth
- Vinyl overhead
- Recessed overhead lights
- Smoke alarm

- Carbon monoxide alarm
- Samsung LCD television
- 3-lb. Kidde dry chemical fire extinguisher
- Clarion DVD changer to forward cockpit stereo
- Air conditioning duct

Starboard Head

Access from foyer and bow stateroom

- Air conditioning duct
- VacuFlush head
- Mirrored locker doors
- Vanity with laminate top, raised Kohler sink, single lever hot and cold water faucet
- Overhead lights
- Exhaust blower
- 110V ground-fault circuit-interrupt-protected outlet
- Shower stall with door and hot/cold water faucet, showerhead on hose, Moen mixing valve, teak grate and benchseat
- Overhead sky light to the helm station with blinds
- Porthole in alcove with blinds

Helm Station

- L-shaped benchseat, port, with storage
- White leather chair, port forward
- Table lamp, port
- Recessed drink holder
- Stidd electric helmsman chair

- Ritchie compass
- Garmin engine display
- Volvo Penta electronic engine controls
- Switches for horn, navigation/anchor light, panel lights, courtesy lights, (5) bilge pumps, three windshield wipers, windshield washer, windlass up/down
- Air conditioning duct
- Lenco trim tab controls
- Fireboy engine shutdown system with override switch and indicator lights
- Garmin VHF radio
- Custom steering wheel
- Teak footrest
- (2) Garmin displays with radar, chart, plotter, FLIR camera, closed circuit television camera, depth display
- Garmin speed/depth display
- Volvo Penta autopilot
- Joystick control

Electronics

- Garmin Radar
- Garmin GPS
- Garmin VHF
- Ritchie Magnetic Compass
- FLIR M-324XP Night Vision Camera
- Volvo Penta Autopilot
- Armrest Garmin Remote Control
- Cockpit Camera

Garmin AIS transponder and receiver

Deck Equipment

- GROUND TACKLE: approximately 20-kg stainless steel Lenmar plow anchor with approximately 60' of chain, approximately 150' of 5/8" nylon rode
- WINDLASS: Lewmar electric CLEATS: stainless steel
- SAFETY RAILS: aluminum
- DAVIT: Nautical Structures Retractable swim platform electric/hydraulic
- Fiberglass deck with molded nonskid Integral hardtop and windshield frame
- (3) Windshield wipers
- Waste pump out, starboard on side deck
- (2) Stainless steel spring cleats, port and starboard
- Bomar hatch to bow stateroom
- Water fill, port and starboard forward
- Fuel fills, port and starboard
- Navigation lights, port and starboard, at the bow

Electric Grill on the transom

LED cup holders and LED lights in the rails

Hardtop

- Centerline opening skylight
- Garmin radar
- (2) VHF antennas
- Forward navigation/anchor light on the mast
- (2) GPS antennas
- FLIR night vision camera
- Dual trumpet horns
- Hailer
- Glomex Cellular/WiFi Dome Antenna

Foredeck

- Fiberglass deck with molded nonskid
- Stainless steel rails
- Sun pad with cushions and cover
- Stainless steel anchor chute with (2) rollers
- Lenmar anchor windlass with remote pendant and friction release bar
- Lewmar 20-kg stainless steel anchor with approximately 60' of chain and 150' of 5/8" nylon rode
- (2) Hatches to cabin locker
- Stainless steel bow cleat, port and starboard
- Port and starboard navigation lights, forward
- (2) Stainless steel spring cleats, port and starboard

Plumbing

- Polyethylene holding tank, aft, with (2) vacuum pumps
- 12V freshwater pumps
- 20-gallon hot water heater
- Holding tank discharge pump
- Holding tank discharge seacock
- Shower sump with internal pump

Electrical Equipment

- Generator: Onan 13.5 KW
- LOCATION: aft in the engine room
- MODEL#:MDKBN-1445761

- KILOWATTS: 13.5 VOLTAGE: 120/
- RPM:1800 COOLED: freshwater
- EXHAUST LINE: hose connected fiberglass muffler FILTERS: primary:
- Racor; secondary: Canister
- BATTERY CHARGER[S]: Victron 24-volt 16-amp / Victron 12-volt 80-amp
- STORAGE BATTERIES, ENGINE
- LIGHTING: 24V D.C. & 110V A.C.
- All batteries new Gel AGM this year
- (6) 12V 4D batteries port in the engine room
- (2) 12V 4D batteries centerline in the engine room
- (2) 12V 4D batteries starboard in the engine room
- Controls: engine room/ salon

Transom Garage

- Indirect Lighting
- Two hatches to the IPS compartment
- Dock lines
- 110V GFI outlet
- Kenyon 2-burner electric grill with marble counter
- Access to Volvo Penta I.P.S. Drive compartment
- Nautical Structures hydraulic swim platform with teak inlaid

Boarding Stairs Storage, (Brackets on both sides of the vessel)

Engine Room

Engine Hrs: Port 506 Hrs Starboard 509 Hrs

Ips II 950

- (3) Battery cut-off switches [2 engines / house]
- Racor fuel filter to each engine, forward
- Air conditioning raw water cooling pump, forward Blowers, port and starboard
- Victron 24V 16-Amp / Victron 12V 80-Amp battery chargers
- Reverso oil change pump to manifold, aft

- Racor fuel filter for generator
- (10) Maintenance-free 12Vt 4D batteries, (6) port, (2) centerline (2) starboard in cases Replaced in the last 12 months
- (4) Fluorescent D.C. lights
- Discharge-of-oil plaque
- Stainless steel water tanks, port, and starboard
- Sump in an enclosed box, aft
- Air compressor for the horn, starboard aft
- Raw water wash-down pump
- (1) Alternator, port engine, (2) alternators on the starboard engine
- 12 & 24V D.C. breaker panels, centerline forward with (3) battery cut-off switches
- Cable master retractable power cord unit and collector bin [port aft]

Additional Information

- The vessel has an LLC Ownership
- US Documented vessel
- Equipped with a Nest Alarm system

Disclaimer

The Company offers the details of this vessel in good faith but cannot guarantee or warrant the accuracy of this information nor warrant the condition of the vessel. A buyer should instruct his agents, or his surveyors, to investigate such details as the buyer desires validated. Hours listed may vary from actual hours due to recent use. Purchaser is encouraged to verify hours prior to purchase. This vessel is offered subject to prior sale, price change, or withdrawal without notice.

Exclusions

Owner's personal belongings.

Disclaimer

The Company offers the details of this vessel or yacht in good faith but cannot guarantee or warrant the accuracy of this information nor warrant the condition of the vessel. A buyer should instruct his representatives, agents, or his surveyors, to investigate such details as the buyer desires validated. This vessel or yacht is offered subject to prior sale, price change, or withdrawal without notice.

PHOTOS

Cockpit No Shade



Cockpit Shade Open



Helm



Salon Sunroof Open



Salon Sunroof Closed



Galley



Master Stateroom



Master Head



VIP Stateroom



VIP Head



Third Stateroom



Transom



Cockpit Controls



Engine room



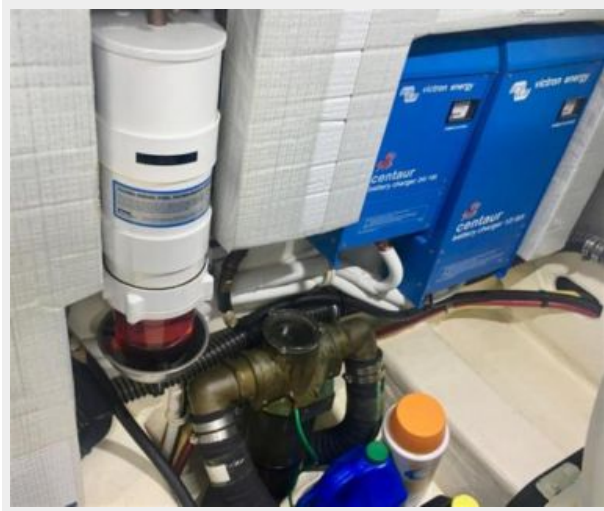
Bow Sunpad



Night Vision Camera



Battery Chargers



Windlass



CONTACTS

Andrey Shestakov, leading yacht broker of the sales department of Shestakov Yacht Sales Inc. Shestakov Yacht Sales Inc., the official representative of the Miami/Fort Lauderdale FL headquarters.

Contact details

Email: andrey@shestakovyachtsales.com

Web: shestakovyachtsales.com/en/

Telephones

USA: +1(954)274-4435

Office hours

Monday – Saturday: **9:00 - 21:00** EDT

Sunday: **closed**

Address



Harbour Towne Marina, 850 NE 3rd St,
STE 213, Dania, FL 33004