

SEA RAY SUNDANCER — SEA RAY



Builder: SEA RAY

LOA: 34' 0" (10.36m)

Year Built: 2006

Beam: 11' 5" (3.48m)

Model: Cruiser

Price: PRICE ON APPLICATION

Location: United States

Our experienced yacht broker, Andrey Shestakov, will help you choose and buy a yacht that best suits your needs **Sea Ray Sundancer — SEA RAY** from our catalogue. Presently, at Shestakov Yacht Sales Inc., we have a wide variety of yachts available on our sale's list. We also work in close contact with all the big yacht manufacturers from all over the world.

If you would like to buy a yacht **Sea Ray Sundancer — SEA RAY** or would like help answering any questions concerning purchasing, selling or chartering a yacht, please call **+1(954)274-4435**

TABLE OF CONTENTS

TABLE OF CONTENTS	2
SPECIFICATIONS	5
Overview	5
Basic Information	5
Dimensions	5
Speed, Capacities and Weight	5
Hull and Deck Information	5
Engine Information	5
DETAILED INFORMATION	6
Accommodations	6
Galley	6
Engines	7
Decksides	7
Electronics	8
Hull and Deck	8
Electrical	9
Helm	10
Engine Room	11
Water System	11
Waste System	12
Disclaimer	12
Exclusions	12
Disclaimer	12
PHOTOS	13
27012294_20190330123459248_1_LARGE	13
37012294_20190330123501429_1_LARGE	13
47012294_20190309150232744_1_LARGE	13
57012294_20190309150346263_1_LARGE	13

67012294_20190309150524202_1_LARGE	14
77012294_20190309150418991_1_LARGE	14
87012294_20190309150419492_1_LARGE	14
97012294_20190309150423467_1_LARGE	14
107012294_20190309150425205_1_LARGE	14
117012294_20190309150427477_1_LARGE	14
127012294_20190309150429279_1_LARGE	15
137012294_20190309150433815_1_LARGE	15
147012294_20190309150438609_1_LARGE	15
157012294_20190309150624442_1_LARGE	15
167012294_20190309150608482_1_LARGE	15
177012294_20190314185006086_1_LARGE	15
187012294_20190314185007358_1_LARGE	16
197012294_20190314185006837_1_LARGE	16
207012294_20190309150415419_1_LARGE	16
217012294_20190309150413976_1_LARGE	16
227012294_20190314185003302_1_LARGE	16
237012294_20190314185003881_1_LARGE	16
247012294_20190314185002563_1_LARGE	17
257012294_20190309150417153_1_LARGE	17
267012294_20190314185005511_1_LARGE	17
277012294_20190314185005030_1_LARGE	17
287012294_20190314185851804_1_LARGE	17
297012294_20190309150509834_1_LARGE	17
307012294_20190314185001937_1_LARGE	18
317012294_20190309150557732_1_LARGE	18
327012294_20190309150603199_1_LARGE	18
337012294_20190309150613225_1_LARGE	18
347012294_20190314185900267_1_LARGE	18

357012294_20190314185900877_1_LARGE	18
367012294_20190309150619151_1_LARGE	19
377012294_20190314185004567_1_LARGE	19
387012294_20190314185859734_1_LARGE	19
397012294_20190314185859153_1_LARGE	19
407012294_20190309150448971_1_LARGE	19
417012294_20190309150458776_1_LARGE	19
427012294_20190309150453998_1_LARGE	20
437012294_20190309150504943_1_LARGE	20
447012294_20190314185901460_1_LARGE	20
457012294_20190314185903631_1_LARGE	20
467012294_20190314185902858_1_LARGE	20
477012294_20190314185902082_1_LARGE	20
487012294_20190309150535316_1_LARGE	21
497012294_20190309150546540_1_LARGE	21
507012294_20190309150541127_1_LARGE	21
517012294_20190309150552809_1_LARGE	21
527012294_20190309150529969_1_LARGE	21
CONTACTS	22
Contact details	22
Telephones	22
Office hours	22
Address	22

SPECIFICATIONS

Overview

This 340 Sea Ray is exceptionally clean. She has a great list of options. Three that stand out are the Bow Thruster, Sat TV and the extended camper enclosure. Check out the details and the pictures and call for an appointment today.

Basic Information

Category: Cruiser

Model Year: 2006

Year Built: 2006

Country: United States

Dimensions

LOA: 34' 0" (10.36m)

Beam: 11' 5" (3.48m)

Speed, Capacities and Weight

Displacement: 15500 Pounds

Water Capacity: 40 Gallons

Holding Tank: 28 Gallons

Fuel Capacity: 225 Gallons

Hull and Deck Information

Hull Material: Fiberglass

Deck Material: Fiberglass

Engine Information

Engines: 2

Manufacturer: Mercruiser

Model: 8.1 Liter Horizon

Engine Type: Inboard

Fuel Type: Gas/Petrol

DETAILED INFORMATION

Accommodations

Full Size Island Style Berth Forward

Privacy Curtain for Forward Berth

Hanging Locker with Mirrored Door

Double Mid Berth - Converts to Conversation Pit

Privacy Curtain for Forward Berth

Ample Storage Cabinets Fore and Aft

Crescent Sofa to Starboard Side

Sofa Slides Out to Convert Into Single Berth

Removable Dinette Table with Floor Insert - Designated Storage

Maple Interior Package

Fiberglass Head Compartment

Integral Shower

Vacu-Flush Head with Holding Tank and Macerator

12000 BTU reverse Cycle Heat and Air Conditioning

Optional 23" Flatscreen TV - Aft Salon Bulkhead

Optional Flipdown Mid-Cabin TV

Clarion Stereo System

Galley

Molded Fiberglass Countertop

Corian Sink Basin and Stovetop Covers

Dual Burner Solid Surface Stovetop

Stainless Sink Basin

Stainless Microwave Oven with Built-in Coffee Maker

New Dual Voltage Refrigerator with Freezer Compartment

Drawer and Cabinet Storage

Pressurized Fresh Water System

6 Gallon Water Heater - 20 VAC with Engine Heat Exchanger

Galley Wood Flooring

Engines

Twin MerCruiser 8.1S Horizon Engines - 370 HP - 710 Hours

Closed Loop (Fresh Water) Cooling

V-Drive

Underwater Exhaust

Kohler 5.0 kW Generator with 123 Hours

Side Power Electric Bow Thruster

Solenoid Battery Switches

Automatic Fire Suppression System

Deckside

Navy Blue Hull and Arctic White Deck Gelcoat

Blue Canvas Enclosure w/ **Extended Back Enclosure**

Black Bottom Paint

Double Helm Chairs with Independent Bolders

Single Forward Facing Portside Chair

U-Shaped Cockpit Seating

Cockpit Table with Hatch Storage

Cockpit Wet bar with Fresh Water Sink

Cockpit Refrigerator 120VAC 12VDC

Electrically Actuated Engine Room Hatch

Large Integral Swim Platform with Swim-Ladder

Electrically Actuated Window Vent

Electric Anchor Windlass with Helm and Bow Controls

Electronics

Raymarine C80 Chartplotter/GPS

Radar

SmartCraft Engine Guages

VHF Radio

Bow Truster

Hull and Deck

340DA_SpecSheet_07_F_0825

Bottom Paint

Bow & Stern Eyes, Stainless Steel

Bow Rail, Stainless Steel w/Welded Stanchions

Cleats, Custom Sea Ray® 10" Thru-out

Bolted - Stainless Steel (8) Deck Fill Plates, Stainless Steel Drain Plugs,

Gel Coat, Arctic White

Graphics, Striping

Handrails, Stainless Steel - Sport

Spoiler (2)Handrails, Stainless Steel -

Transom (2) Handrails, Stainless Steel -

Windshield (2) Hatch, Deck Vent - Clear, Tinted & Tempered w/Locks & Sky Screen

Cover - Trapezoidal

Light, Stern Lights, Navigation -Stainless Steel

Portlights, Stainless Steel w/Curtains (4 Opening)

Resin, High-Performance Vinylester

Rub Rail, PVC w/Stainless-Steel Insert

Skylights, Circular - Salon (2) Storage,

Transom Wall - (For Fenders & Gear)

Swim Platform, Integral/Extended

w/Stainless-Steel Three-Step Swim Ladder

340DA_SpecSheet_07_F_0825

Thru-Hull Fittings, Stainless Steel

Toe Rail, Molded Fiberglass

Integral Windshield, Tempered/Tinted Curved Glass

Stainless-Steel Supports with Windshield Wipers

Canvas Sunbrella with Isenglas

Extended Camper Canvas Aft

Electrical

340DA_SpecSheet_07_F_0825

Battery Charger/Converter, 120V Battery Solenoid Switches, 12V (3) Battery Trays w/Mounts

Breaker Panels, Waterproof - Electronic

Panel, DC Main Breaker Panel, Main Distribution -

AC Panel, Main Distribution -

DC Shore Power, Dual 120V/30 Amp w/50' Cords & Adapters

TV Inlet w/TV Antenna & TV

Sat TV System

Shore Cord Wiring, Color-Coded w/Chafe Protection

Air Conditioning/Heating:

Reverse Cycle System (12,000 BTU) Custom Integral Vent System

Helm

340DA_SpecSheet_07_F_0825

Alarms, Engine - Oil & Water (Audible)

Alarms, High-Water - Bilge & Cabin Compass

Emergency Start System - Engines Horn

Instrument Panel - High-Gloss Burl

Shift & Throttle Control

SmartCraft™ Diagnostics:

-Instrumentation, Analog 4-in-1 Multigauges (2) w/Low-Glare Blue Night Lighting & Chrome Bezels (Includes: Fuel Level,

Oil Pressure, Voltmeter,

Water Temperature)- SmartCraft System Speedometer

SmartCraft System Tachometers (2) (Includes: Depth, Engine Alarms/Hour Meters, Fuel Consumption/Usage, Trim Level)

Steering, Hydraulic, Steering,

Steering, Tilt Wheel

Steering Wheel, Wood-Accent

Switch Pads, Weatherproof Electronic w/ISO

Engine Room

340DA_SpecSheet_07_F_0825

Bilge Pump, 12V Automatic

Water (1 Bilge, 1 Cabin) Blowers, 12V Bilge (2)

Exhaust, Underwater - Patented

Fire Suppression System - Automatic w/Manual Pull

Gel-Coated Engine Room Insulation, Engine Room - 2" w/Vinyl

Barrier Under Main Hatch Lighting, 12V

Oil Filters - Remote

Fuel System:

Fuel Lines, USCG - Type A-1

Fuel Tanks, Aluminum w/Electric Shutoff Valves & Electric Sending Units

Water System

340DA_SpecSheet_07_F_0825

Freshwater Washdown Spigot

Pressure Water System w/12V Pump Shower,

Cockpit - Hot & Cold Water Heater, 120V (6-Gallon) w/Exchanger

Water Inlet

Dockside Water Manifold System

Water Tank (45-Gallon)

Waste System

340DA_SpecSheet_07_F_0825

Head System (VacuFlush®)

Holding Tank Level Indicator

MDP Holding Tank w/Dockside Pump-Out (28-Gallon)

Disclaimer

The Company offers the details of this vessel in good faith but cannot guarantee or warrant the accuracy of this information nor warrant the condition of the vessel. A buyer should instruct his agents, or his surveyors, to investigate such details as the buyer desires validated. This vessel is offered subject to prior sale, price change, or withdrawal without notice.

Exclusions

Owner's personal belongings.

Disclaimer

The Company offers the details of this vessel or yacht in good faith but cannot guarantee or warrant the accuracy of this information nor warrant the condition of the vessel. A buyer should instruct his representatives, agents, or his surveyors, to investigate such details as the buyer desires validated. This vessel or yacht is offered subject to prior sale, price change, or withdrawal without notice.

PHOTOS

27012294_20190330123459248_1_LARGE



37012294_20190330123501429_1_LARGE



47012294_20190309150232744_1_LARGE



57012294_20190309150346263_1_LARGE



67012294_20190309150524202_1_LARGE



77012294_20190309150418991_1_LARGE



87012294_20190309150419492_1_LARGE



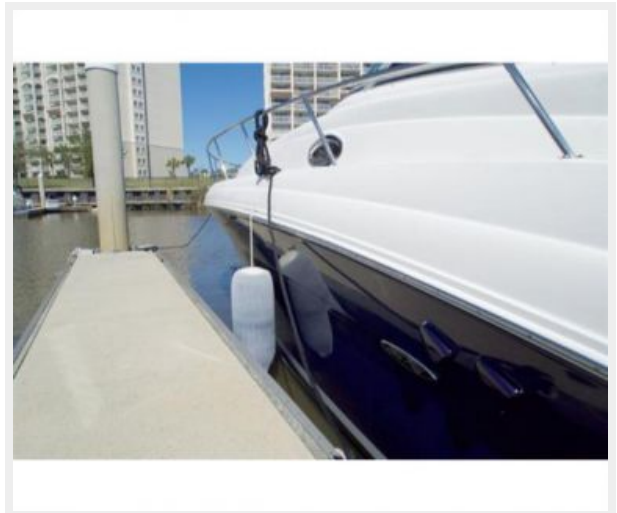
97012294_20190309150423467_1_LARGE



107012294_20190309150425205_1_LARGE



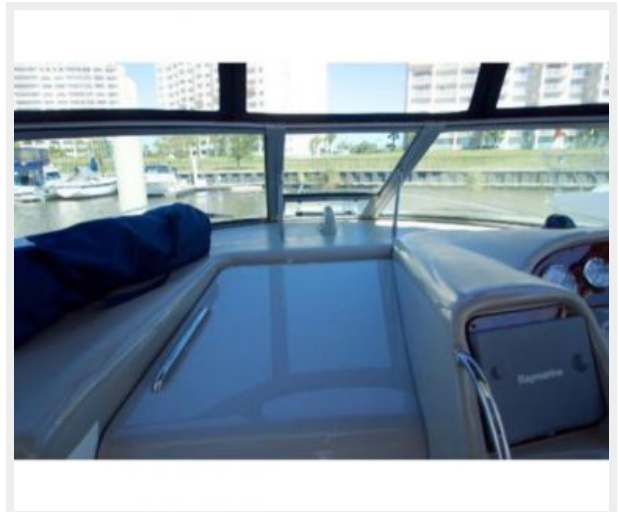
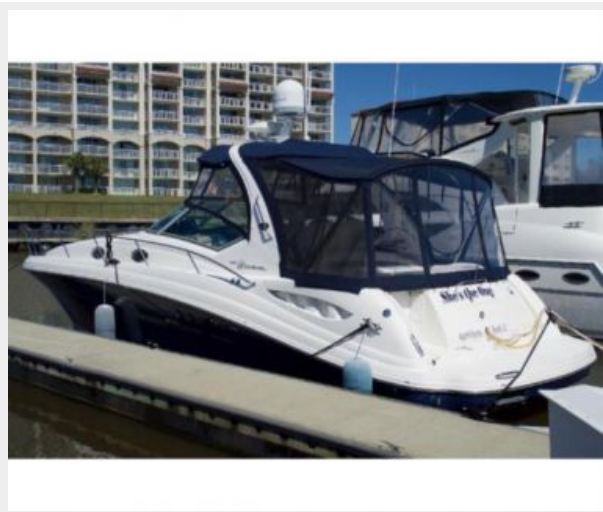
117012294_20190309150427477_1_LARGE



127012294_20190309150429279_1_LARGE 137012294_20190309150433815_1_LARGE



147012294_20190309150438609_1_LARGE 157012294_20190309150624442_1_LARGE



167012294_20190309150608482_1_LARGE 177012294_20190314185006086_1_LARGE



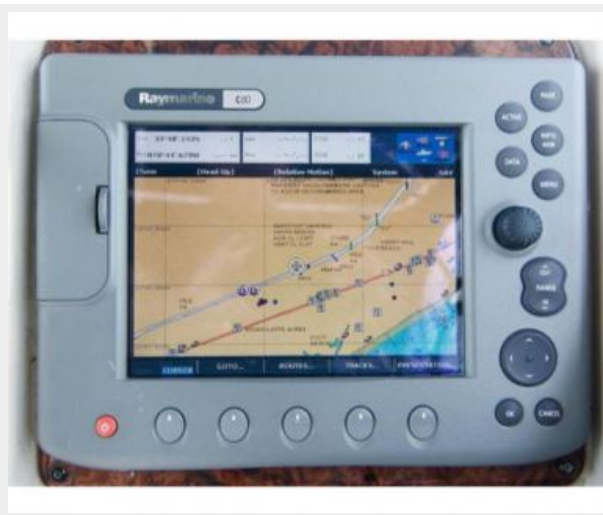
187012294_20190314185007358_1_LARGE 197012294_20190314185006837_1_LARGE



207012294_20190309150415419_1_LARGE 217012294_20190309150413976_1_LARGE



227012294_20190314185003302_1_LARGE 237012294_20190314185003881_1_LARGE



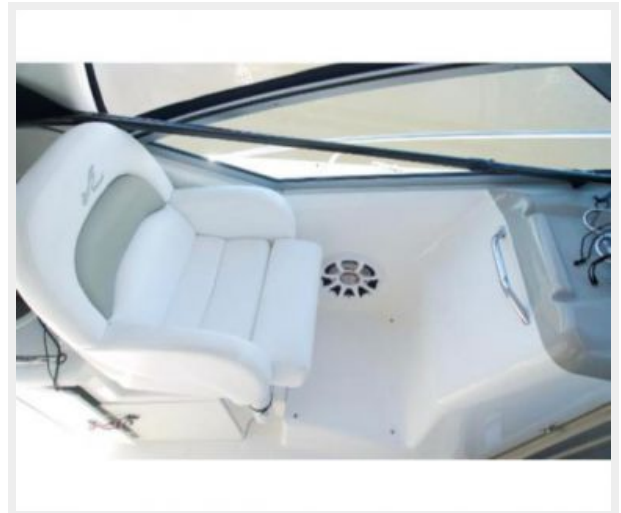
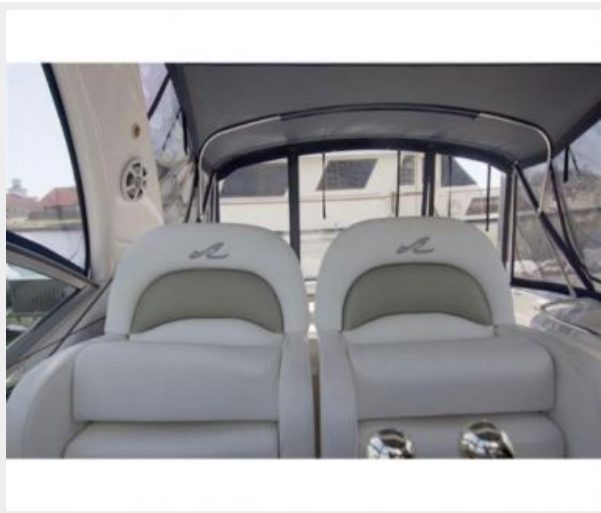
247012294_20190314185002563_1_LARGE 257012294_20190309150417153_1_LARGE



267012294_20190314185005511_1_LARGE 277012294_20190314185005030_1_LARGE



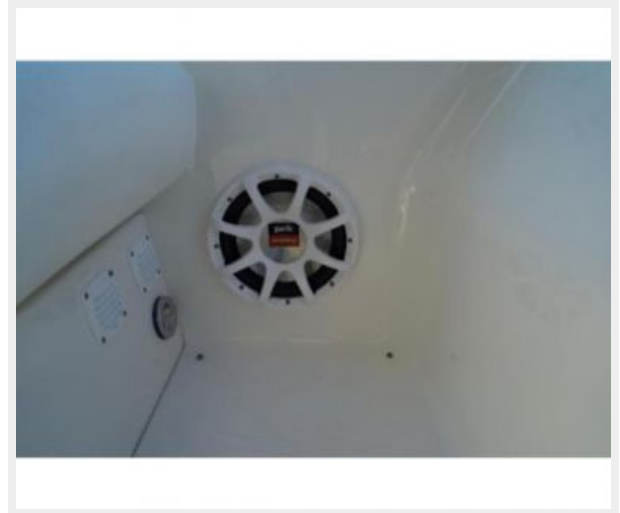
287012294_20190314185851804_1_LARGE 297012294_20190309150509834_1_LARGE



307012294_20190314185001937_1_LARGE 317012294_20190309150557732_1_LARGE



327012294_20190309150603199_1_LARGE 337012294_20190309150613225_1_LARGE



347012294_20190314185900267_1_LARGE 357012294_20190314185900877_1_LARGE



367012294_20190309150619151_1_LARGE 377012294_20190314185004567_1_LARGE



387012294_20190314185859734_1_LARGE 397012294_20190314185859153_1_LARGE



407012294_20190309150448971_1_LARGE 417012294_20190309150458776_1_LARGE



427012294_20190309150453998_1_LARGE 437012294_20190309150504943_1_LARGE



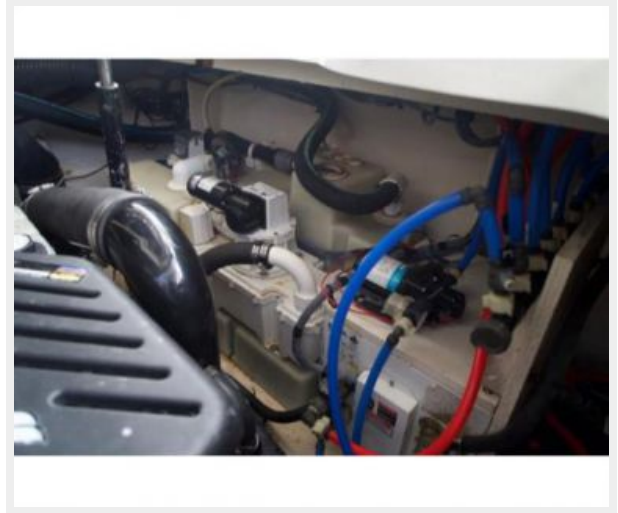
447012294_20190314185901460_1_LARGE 457012294_20190314185903631_1_LARGE



467012294_20190314185902858_1_LARGE 477012294_20190314185902082_1_LARGE



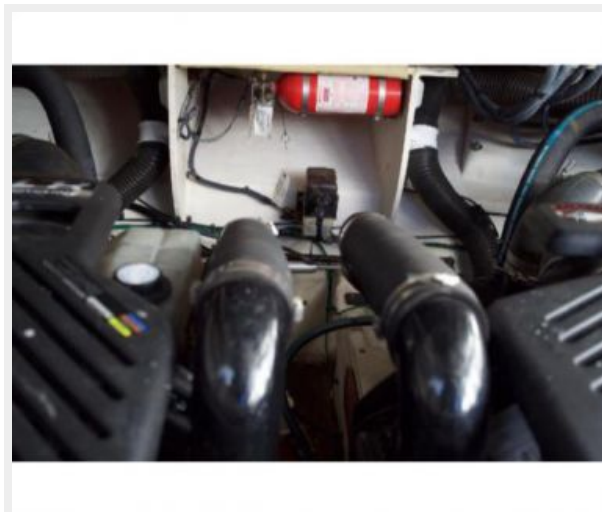
487012294_20190309150535316_1_LARGE 497012294_20190309150546540_1_LARGE



507012294_20190309150541127_1_LARGE 517012294_20190309150552809_1_LARGE



527012294_20190309150529969_1_LARGE



CONTACTS

Andrey Shestakov, leading yacht broker of the sales department of Shestakov Yacht Sales Inc. Shestakov Yacht Sales Inc., the official representative of the Miami/Fort Lauderdale FL headquarters.

Contact details

Email: andrey@shestakovyachtsales.com

Web: shestakovyachtsales.com/en/

Telephones

USA: +1(954)274-4435

Office hours

Monday – Saturday: **9:00 - 21:00** EDT

Sunday: **closed**

Address



Harbour Towne Marina, 850 NE 3rd St,
STE 213, Dania, FL 33004