

## SEA RAY SUNDANCER — SEA RAY



**Судостроитель:** SEA RAY

**Длина общая:** 34' 0" (10.36m)

**Год постройки:** 2006

**Ширина:** 11' 5" (3.48m)

**Модель:** Крейсер

**Цена:** **ЦЕНА ЯХТЫ ПО ЗАПРОСУ**

**Местонахождение:** United States

Купить **Sea Ray Sundancer — SEA RAY** а также выбрать подходящую вам яхту из нашего каталога яхт вам поможет опытный яхтенный брокер Андрей Шестаков. На сегодняшний день компания **Shestakov Yacht Sales Inc.** имеет большое количество яхт в собственном списке продаж, а также тесно сотрудничает со всеми крупными яхтенными производителями по всему миру.

Для того чтобы купить яхту **Sea Ray Sundancer — SEA RAY** а также проконсультироваться по любому вопросу связанному с покупкой, продажей, чартером яхт позвоните по телефону **+7(918)465-66-44**.

# ОГЛАВЛЕНИЕ

ОГЛАВЛЕНИЕ	2
ХАРАКТЕРИСТИКИ	5
Обзор	5
Основная информация	5
Размеры	5
Скорость, вместимость и масса	5
Корпус и палуба	5
Информация о двигателе	5
ПОДРОБНОЕ ОПИСАНИЕ	6
Accommodations	6
Galley	6
Engines	7
Decksides	7
Electronics	8
Hull and Deck	8
Electrical	9
Helm	10
Engine Room	11
Water System	11
Waste System	12
Disclaimer	12
Исключения	12
Отказ от ответственности	12
ФОТОГРАФИИ	13
27012294_20190330123459248_1_LARGE	13
37012294_20190330123501429_1_LARGE	13
47012294_20190309150232744_1_LARGE	13
57012294_20190309150346263_1_LARGE	13

67012294_20190309150524202_1_LARGE	14
77012294_20190309150418991_1_LARGE	14
87012294_20190309150419492_1_LARGE	14
97012294_20190309150423467_1_LARGE	14
107012294_20190309150425205_1_LARGE	14
117012294_20190309150427477_1_LARGE	14
127012294_20190309150429279_1_LARGE	15
137012294_20190309150433815_1_LARGE	15
147012294_20190309150438609_1_LARGE	15
157012294_20190309150624442_1_LARGE	15
167012294_20190309150608482_1_LARGE	15
177012294_20190314185006086_1_LARGE	15
187012294_20190314185007358_1_LARGE	16
197012294_20190314185006837_1_LARGE	16
207012294_20190309150415419_1_LARGE	16
217012294_20190309150413976_1_LARGE	16
227012294_20190314185003302_1_LARGE	16
237012294_20190314185003881_1_LARGE	16
247012294_20190314185002563_1_LARGE	17
257012294_20190309150417153_1_LARGE	17
267012294_20190314185005511_1_LARGE	17
277012294_20190314185005030_1_LARGE	17
287012294_20190314185851804_1_LARGE	17
297012294_20190309150509834_1_LARGE	17
307012294_20190314185001937_1_LARGE	18
317012294_20190309150557732_1_LARGE	18
327012294_20190309150603199_1_LARGE	18
337012294_20190309150613225_1_LARGE	18
347012294_20190314185900267_1_LARGE	18

357012294_20190314185900877_1_LARGE	18
367012294_20190309150619151_1_LARGE	19
377012294_20190314185004567_1_LARGE	19
387012294_20190314185859734_1_LARGE	19
397012294_20190314185859153_1_LARGE	19
407012294_20190309150448971_1_LARGE	19
417012294_20190309150458776_1_LARGE	19
427012294_20190309150453998_1_LARGE	20
437012294_20190309150504943_1_LARGE	20
447012294_20190314185901460_1_LARGE	20
457012294_20190314185903631_1_LARGE	20
467012294_20190314185902858_1_LARGE	20
477012294_20190314185902082_1_LARGE	20
487012294_20190309150535316_1_LARGE	21
497012294_20190309150546540_1_LARGE	21
507012294_20190309150541127_1_LARGE	21
517012294_20190309150552809_1_LARGE	21
527012294_20190309150529969_1_LARGE	21
КОНТАКТЫ	22
Контактная информация	22
Телефоны	22
Время работы	22
Адрес	22

# ХАРАКТЕРИСТИКИ

## Обзор

This 340 Sea Ray is exceptionally clean. She has a great list of options. Three that stand out are the Bow Thruster, Sat TV and the extended camper enclosure. Check out the details and the pictures and call for an appointment today.

## Основная информация

Тип судна: Крейсер

Модельный год: 2006

Год постройки: 2006

Страна: United States

## Размеры

Длина общая: 34' 0" (10.36m)

Ширина: 11' 5" (3.48m)

## Скорость, вместимость и масса

Водоизмещение: 15500 Pounds

Вместимость воды: 40 Gallons

Вместимость сточного бака: 28 Gallons

Объем топливного бака: 225 Gallons

## Корпус и палуба

Материал корпуса: Fiberglass

Материал палубы: Fiberglass

## Информация о двигателе

Двигатели: 2

Производитель: Mercruiser

Модель: 8.1 Liter Horizon

Тип двигателя: Inboard

Тип топлива: Gas/Petrol

---

# ПОДРОБНОЕ ОПИСАНИЕ

---

## Accommodations

---

Full Size Island Style Berth Forward

Privacy Curtain for Forward Berth

Hanging Locker with Mirrored Door

Double Mid Berth - Converts to Conversation Pit

Privacy Curtain for Forward Berth

Ample Storage Cabinets Fore and Aft

Crescent Sofa to Starboard Side

Sofa Slides Out to Convert Into Single Berth

Removable Dinette Table with Floor Insert - Designated Storage

Maple Interior Package

Fiberglass Head Compartment

Integral Shower

Vacu-Flush Head with Holding Tank and Macerator

12000 BTU reverse Cycle Heat and Air Conditioning

Optional 23" Flatscreen TV - Aft Salon Bulkhead

Optional Flipdown Mid-Cabin TV

Clarion Stereo System

## Galley

---

Molded Fiberglass Countertop

Corian Sink Basin and Stovetop Covers

Dual Burner Solid Surface Stovetop

Stainless Sink Basin

Stainless Microwave Oven with Built-in Coffee Maker

New Dual Voltage Refrigerator with Freezer Compartment

Drawer and Cabinet Storage

Pressurized Fresh Water System

6 Gallon Water Heater - 20 VAC with Engine Heat Exchanger

Galley Wood Flooring

---

## Engines

---

Twin MerCruiser 8.1S Horizon Engines - 370 HP - 710 Hours

Closed Loop (Fresh Water) Cooling

V-Drive

Underwater Exhaust

Kohler 5.0 kW Generator with 123 Hours

Side Power Electric Bow Thruster

Solenoid Battery Switches

Automatic Fire Suppression System

---

## Deckside

---

Navy Blue Hull and Arctic White Deck Gelcoat

Blue Canvas Enclosure w/ **Extended Back Enclosure**

Black Bottom Paint

Double Helm Chairs with Independent Bolders

Single Forward Facing Portside Chair

U-Shaped Cockpit Seating

Cockpit Table with Hatch Storage

Cockpit Wet bar with Fresh Water Sink

Cockpit Refrigerator 120VAC 12VDC

Electrically Actuated Engine Room Hatch

Large Integral Swim Platform with Swim-Ladder

Electrically Actuated Window Vent

Electric Anchor Windlass with Helm and Bow Controls

---

## Electronics

---

Raymarine C80 Chartplotter/GPS

Radar

SmartCraft Engine Guages

VHF Radio

Bow Truster

---

## Hull and Deck

---

340DA\_SpecSheet\_07\_F\_0825

Bottom Paint

Bow & Stern Eyes, Stainless Steel

Bow Rail, Stainless Steel w/Welded Stanchions

Cleats, Custom Sea Ray® 10" Thru-out

Bolted - Stainless Steel (8) Deck Fill Plates, Stainless Steel Drain Plugs,

Gel Coat, Arctic White

Graphics, Striping

Handrails, Stainless Steel - Sport

Spoiler (2)Handrails, Stainless Steel -



Transom (2) Handrails, Stainless Steel -

Windshield (2)Hatch, Deck Vent - Clear, Tinted & Tempered w/Locks & Sky Screen

Cover - Trapezoidal

Light, Stern Lights, Navigation -Stainless Steel

Portlights, Stainless Steel w/Curtains (4 Opening)

Resin, High-Performance Vinylester

Rub Rail, PVC w/Stainless-Steel Insert

Skylights, Circular - Salon (2) Storage,

Transom Wall - (For Fenders & Gear)

Swim Platform, Integral/Extended

w/Stainless-Steel Three-Step Swim Ladder

340DA\_SpecSheet\_07\_F\_0825

Thru-Hull Fittings, Stainless Steel

Toe Rail, Molded Fiberglass

Integral Windshield, Tempered/Tinted Curved Glass

Stainless-Steel Supports with Windshield Wipers

Canvas Sunbrella with Isenglas

Extended Camper Canvas Aft

---

## Electrical

---

340DA\_SpecSheet\_07\_F\_0825

Battery Charger/Converter, 120V Battery Solenoid Switches, 12V (3) Battery Trays w/Mounts

Breaker Panels, Waterproof - Electronic

Panel, DC Main Breaker Panel, Main Distribution -

AC Panel, Main Distribution -

DC Shore Power, Dual 120V/30 Amp w/50' Cords & Adapters

TV Inlet w/TV Antenna & TV

Sat TV System

Shore Cord Wiring, Color-Coded w/Chafe Protection

Air Conditioning/Heating:

Reverse Cycle System (12,000 BTU) Custom Integral Vent System

---

## Helm

---

340DA\_SpecSheet\_07\_F\_0825

Alarms, Engine - Oil & Water (Audible)

Alarms, High-Water - Bilge & Cabin Compass

Emergency Start System - Engines Horn

Instrument Panel - High-Gloss Burl

Shift & Throttle Control

SmartCraft™ Diagnostics:

-Instrumentation, Analog 4-in-1 Multigauges (2) w/Low-Glare Blue Night Lighting & Chrome Bezels (Includes: Fuel Level,

Oil Pressure, Voltmeter,

Water Temperature)- SmartCraft System Speedometer

SmartCraft System Tachometers (2) (Includes: Depth, Engine Alarms/Hour Meters, Fuel Consumption/Usage, Trim Level)

Steering, Hydraulic, Steering,

Steering, Tilt Wheel

Steering Wheel, Wood-Accent

Switch Pads, Weatherproof Electronic w/ISO

## Engine Room

---

340DA\_SpecSheet\_07\_F\_0825

Bilge Pump, 12V Automatic

Water (1 Bilge, 1 Cabin) Blowers, 12V Bilge (2)

Exhaust, Underwater - Patented

Fire Suppression System - Automatic w/Manual Pull

Gel-Coated Engine Room Insulation, Engine Room - 2" w/Vinyl

Barrier Under Main Hatch Lighting, 12V

Oil Filters - Remote

Fuel System:

Fuel Lines, USCG - Type A-1

Fuel Tanks, Aluminum w/Electric Shutoff Valves & Electric Sending Units

## Water System

---

340DA\_SpecSheet\_07\_F\_0825

Freshwater Washdown Spigot

Pressure Water System w/12V Pump Shower,

Cockpit - Hot & Cold Water Heater, 120V (6-Gallon) w/Exchanger

Water Inlet

Dockside Water Manifold System

Water Tank (45-Gallon)

---

## Waste System

---

340DA\_SpecSheet\_07\_F\_0825

Head System (VacuFlush®)

Holding Tank Level Indicator

MDP Holding Tank w/Dockside Pump-Out (28-Gallon)

---

## Disclaimer

---

The Company offers the details of this vessel in good faith but cannot guarantee or warrant the accuracy of this information nor warrant the condition of the vessel. A buyer should instruct his agents, or his surveyors, to investigate such details as the buyer desires validated. This vessel is offered subject to prior sale, price change, or withdrawal without notice.

---

## Исключения

---

При продаже яхты исключаются личные вещи владельца.

---

## Отказ от ответственности

---

Компания предоставляет описание судна или яхты добросовестно, но не может гарантировать точность этой информации, а также не ручается за техническое состояние. Покупатель должен проинструктировать своих агентов или оценщиков исследовать представленную информацию более подробно, по собственному желанию. Продажа судна или яхты, изменение цены или снятие с продажи будет происходить без предварительного уведомления.

# ФОТОГРАФИИ

27012294\_20190330123459248\_1\_LARGE



37012294\_20190330123501429\_1\_LARGE



47012294\_20190309150232744\_1\_LARGE



57012294\_20190309150346263\_1\_LARGE



67012294\_20190309150524202\_1\_LARGE



77012294\_20190309150418991\_1\_LARGE



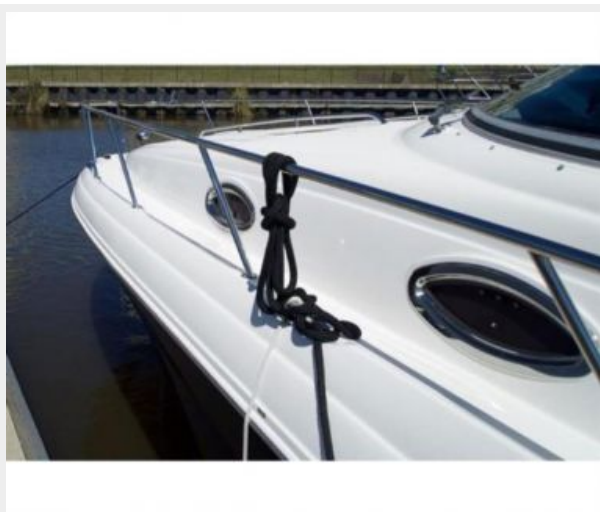
87012294\_20190309150419492\_1\_LARGE



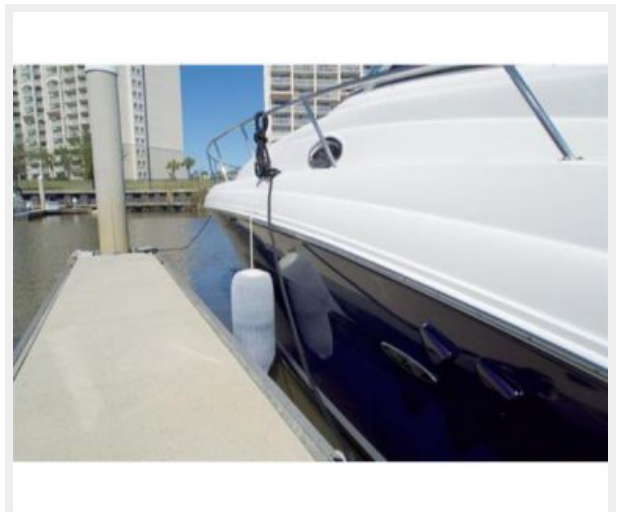
97012294\_20190309150423467\_1\_LARGE



107012294\_20190309150425205\_1\_LARGE



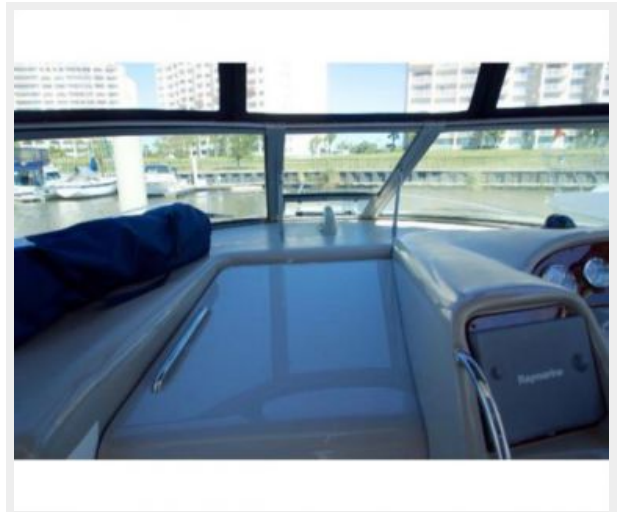
117012294\_20190309150427477\_1\_LARGE



127012294\_20190309150429279\_1\_LARGE 137012294\_20190309150433815\_1\_LARGE



147012294\_20190309150438609\_1\_LARGE 157012294\_20190309150624442\_1\_LARGE



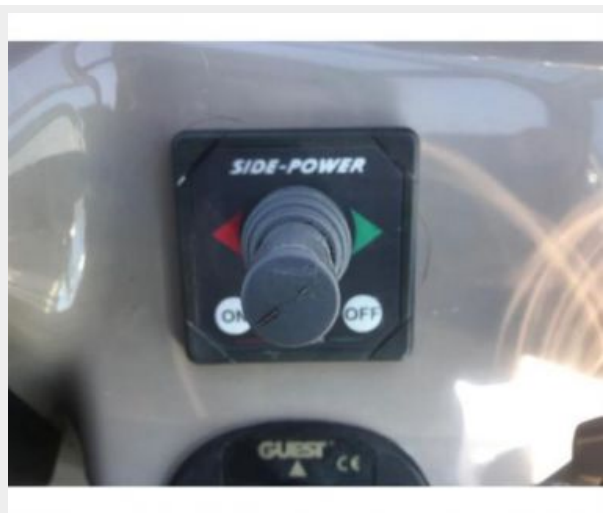
167012294\_20190309150608482\_1\_LARGE 177012294\_20190314185006086\_1\_LARGE



187012294\_20190314185007358\_1\_LARGE 197012294\_20190314185006837\_1\_LARGE



207012294\_20190309150415419\_1\_LARGE 217012294\_20190309150413976\_1\_LARGE



227012294\_20190314185003302\_1\_LARGE 237012294\_20190314185003881\_1\_LARGE





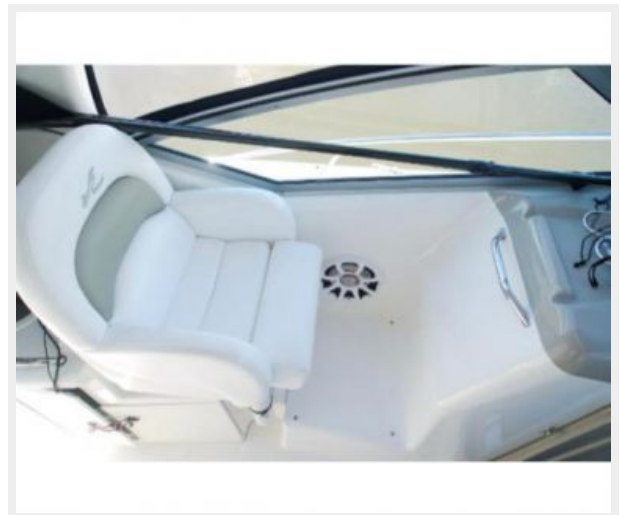
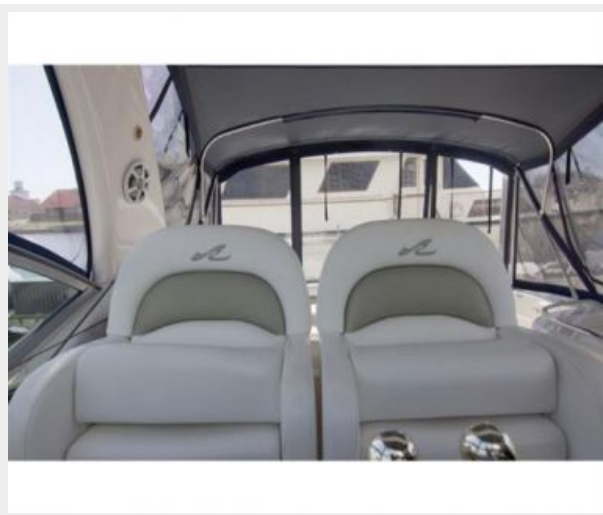
247012294\_20190314185002563\_1\_LARGE 257012294\_20190309150417153\_1\_LARGE



267012294\_20190314185005511\_1\_LARGE 277012294\_20190314185005030\_1\_LARGE



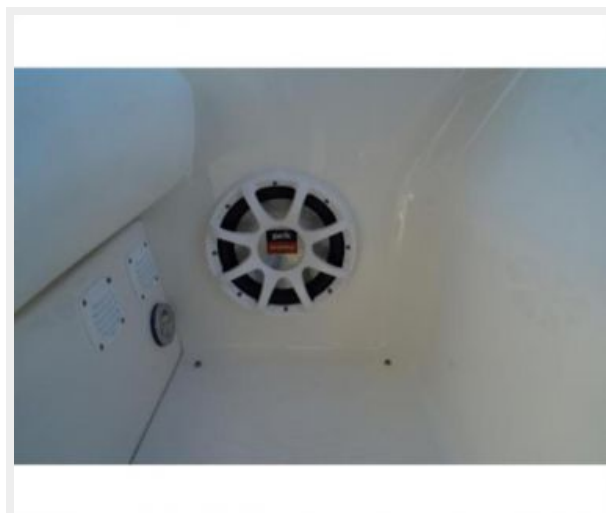
287012294\_20190314185851804\_1\_LARGE 297012294\_20190309150509834\_1\_LARGE



307012294\_20190314185001937\_1\_LARGE 317012294\_20190309150557732\_1\_LARGE



327012294\_20190309150603199\_1\_LARGE 337012294\_20190309150613225\_1\_LARGE



347012294\_20190314185900267\_1\_LARGE 357012294\_20190314185900877\_1\_LARGE



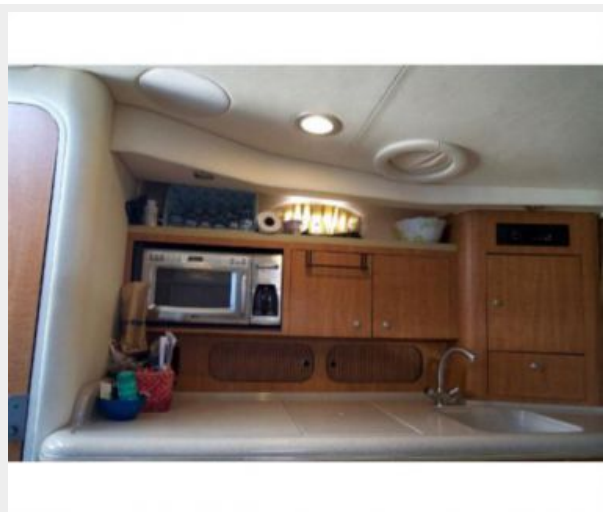
367012294\_20190309150619151\_1\_LARGE 377012294\_20190314185004567\_1\_LARGE



387012294\_20190314185859734\_1\_LARGE 397012294\_20190314185859153\_1\_LARGE



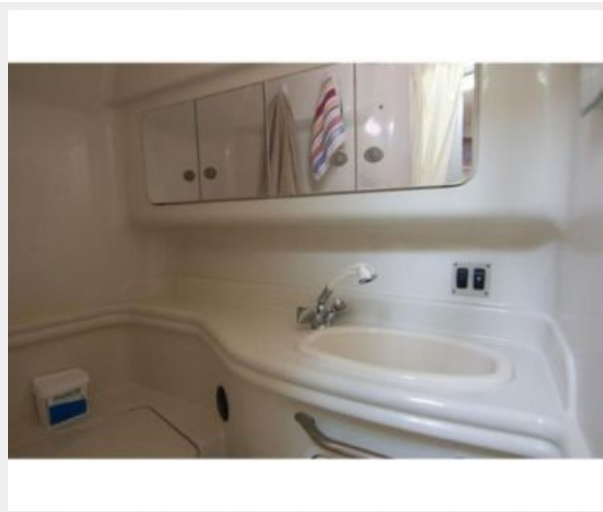
407012294\_20190309150448971\_1\_LARGE 417012294\_20190309150458776\_1\_LARGE



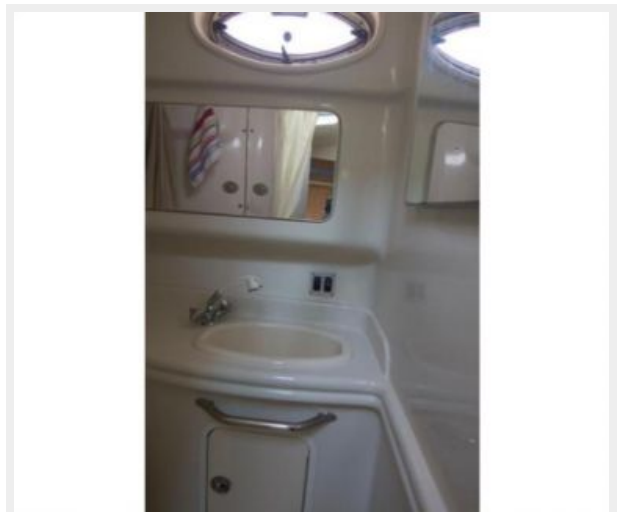
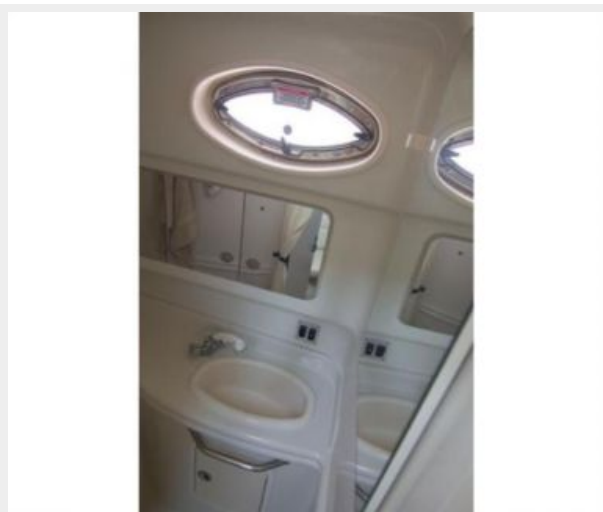
427012294\_20190309150453998\_1\_LARGE 437012294\_20190309150504943\_1\_LARGE



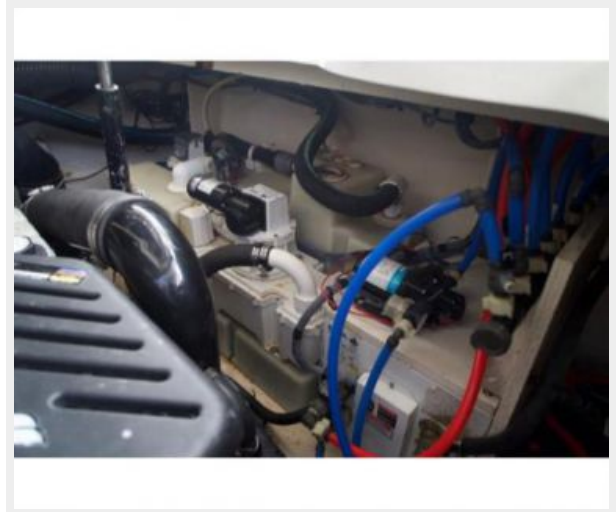
447012294\_20190314185901460\_1\_LARGE 457012294\_20190314185903631\_1\_LARGE



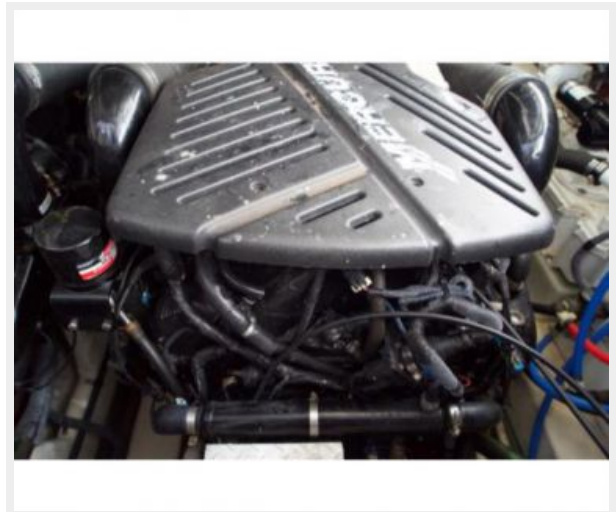
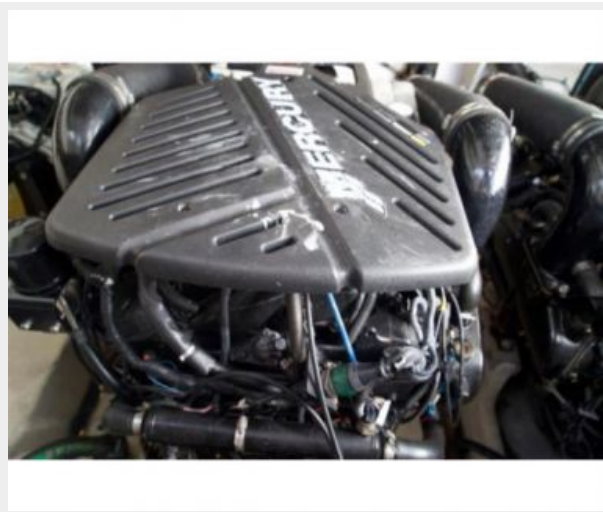
467012294\_20190314185902858\_1\_LARGE 477012294\_20190314185902082\_1\_LARGE



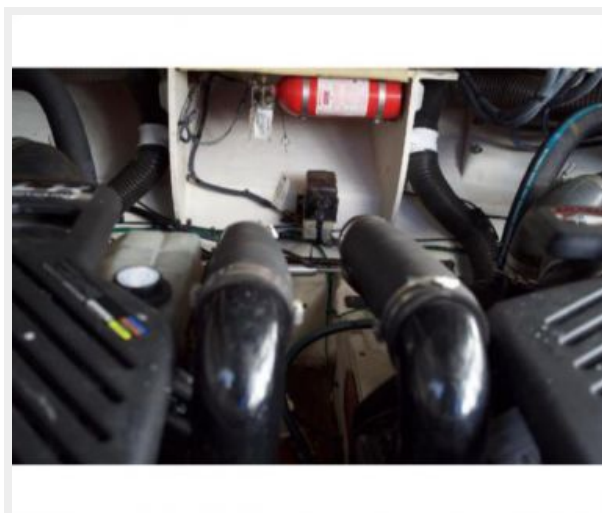
487012294\_20190309150535316\_1\_LARGE 497012294\_20190309150546540\_1\_LARGE



507012294\_20190309150541127\_1\_LARGE 517012294\_20190309150552809\_1\_LARGE



527012294\_20190309150529969\_1\_LARGE



# КОНТАКТЫ

---

Андрей Шестаков (Andrey Shestakov) – ведущий яхтенный брокер отдела продаж яхт и судов компании Shestakov Yacht Sales Inc. Официальный представитель Shestakov Yacht Sales Inc. для русскоговорящих клиентов в центральном офисе компании в Майами/Форт Лодердейл/Флорида/США.

## Контактная информация

---

Email: [andrey@shestakovyachtsales.com](mailto:andrey@shestakovyachtsales.com)

Web: [shestakovyachtsales.com](http://shestakovyachtsales.com)

## Телефоны

---

Краснодарский край: **+7(918)465-66-44**

США, Майами, Флорида: **+1(954)274-4435**

## Время работы

---

Понедельник – Суббота: **9:00 - 21:00**  
EDT

Воскресенье: **Закрито**

## Адрес

---



Harbour Towne Marina, 850 NE 3rd St,  
STE 213, Dania, FL 33004