

HANNAH BEA — TIARA



Builder: TIARA

LOA: 40' 0" (12.19m)

Year Built: 1994

Beam: 14' 6" (4.42m)

Model: Cruising Yacht

Price: PRICE ON APPLICATION

Location: United States

Our experienced yacht broker, Andrey Shestakov, will help you choose and buy a yacht that best suits your needs **Hannah Bea — TIARA** from our catalogue. Presently, at Shestakov Yacht Sales Inc., we have a wide variety of yachts available on our sale's list. We also work in close contact with all the big yacht manufacturers from all over the world.

If you would like to buy a yacht **Hannah Bea — TIARA** or would like help answering any questions concerning purchasing, selling or chartering a yacht, please call **+1(954)274-4435**

TABLE OF CONTENTS

TABLE OF CONTENTS	2
SPECIFICATIONS	5
Overview	5
Basic Information	5
Dimensions	6
Speed, Capacities and Weight	6
Accommodations	6
Hull and Deck Information	6
Engine Information	6
DETAILED INFORMATION	7
Accommodations	7
Galley	7
Electronics	7
Inside Equipment	7
Electrical Equipment	8
Outside Equipment/Extras	8
Disclaimer	8
Exclusions	8
Disclaimer	9
PHOTOS	10
Salon Walk way	10
Salon Seating	10
Salon Seating 3	10
Salon Seating 2	10
Vizio TV	11
Galley	11
Stairs	11
Galley Sink	11

Master	12
Forward Head	12
Forward Head 2	12
Aft Berth	12
Aft Head 2	13
Aft Head Sink	13
Aft Head	13
Helm Seating	13
Helm Electronics	14
Helm Station	14
Helm Throttle	14
Helm Switches	14
Helm Throttles	15
Thruster	15
Helm AC Vent	15
Cockpit Sink & Fridge	15
Electric Panel	16
Engine Hour Gauge	16
Forward Hatch Window 2	16
Forward Hatch Window	16
Aft Seating	16
Davit	16
Swim platform Ladder	17
Transom Profile	17
Engine Hatch	17
Engine	17
Port Engine	18
Starboard Engine	18
Generator	18

Bow pulpit	18
Bow	18
Port Profile	18
Port Side	19
Port	19
Transom	19
layout	19
CONTACTS	20
Contact details	20
Telephones	20
Office hours	20
Address	20

SPECIFICATIONS

Overview

Both seaworthy and luxurious, the Tiara 4000 Express was designed for those who want to do more with their boat than dock or anchor. Tiara's 105-cubic-foot compartment in the transom offers more room for more gear. Tiara has made its staterooms a priority by designing the 4000 with space for a master queen-sized and an aft double-sized berth. They each have at least seven feet of headroom. Wide side decks, an integral grab handle on the radar arch, an oversized step, and a remote cockpit light activator, make the transition from cockpit to deck safe and convenient.

An innovative yacht when she was introduced in 1994, the 4000 Express was the first mid-cabin design ever built by Tiara. With her wide 14'6" beam, the accommodations are spacious for a 40-footer. A huge salon lounge will seat a small crowd around the extendable table, and the open galley includes a separate freezer and tremendous storage. Both staterooms define Tiara luxury, and the mid-cabin area has a full 7 feet of headroom and a small head hidden beneath a cushioned seat. Twin transom doors lead down to the extended swim platform, and built into the transom is a large, hydraulically opened storage trunk. The center section of the cockpit sole lifts for engine access. Additional features include radar arch, foredeck sun pad, electric helm seat and a cockpit wet bar.

Notable Features:

- Bow Thruster
- New Fusion radio w/BT
- New (2) Turbos
- New Intercoolers
- New 10K BTU A/C forward cabin
- New Bottom Paint - September 2019
- New Batteries - October 2019

Conveniently located in St. Petersburg, FL. Call today for a full showing.

Basic Information

Category: Cruising Yacht

Sub Category: Express

Model Year: 1994

Year Built: 1994

Country: United States

Registration #: FL8186PU

Dimensions

LOA: 40' 0" (12.19m)

Beam: 14' 6" (4.42m)

Speed, Capacities and Weight

Water Capacity: 150 Gallons

Holding Tank: 57 Gallons

Fuel Capacity: 444 Gallons

Accommodations

Total Cabins: 2

Sleeps: 4

Total Heads: 1

Hull and Deck Information

Hull Material: Fiberglass

Engine Information

Engines: 2

Manufacturer: Cummins

Model: 6CTA8.3

Engine Type: Inboard

Fuel Type: Diesel

DETAILED INFORMATION

Accommodations

High quality construction as you would expect from Tiara. This is the first model that Tiara made with a mid cabin layout. The forward stateroom features a semi walk-around centerline bed with New Custom mattress and storage underneath, solid privacy door and separate door to the head/shower, 2 hanging lockers, Air/Heat and an opening deck hatch.

The salon is Very Spacious and has one of the largest wrap-around salon sofas you will find in a boat of this size, and speaking of size, she has a 14'6" beam and a ton of headroom which makes her one of the largest in her class. The salon floor is solid teak & holly throughout, everything is very clean and orderly.

The 4000 Express offers the mid-cabin aft with full headroom, vanity and it's own private head.

Galley

- Sub Zero refrigerator w/separate freezer,
- Microwave
- Coffee maker
- 3 burner electric stove
- Deep Stainless sink with Grohe faucet
- Extra counter space and storage above and below
- Central Vac

Electronics

- Fusion radio w/bluetooth
- Radio
- Depthsounder
- TV set
- Compass
- Autopilot
- Radar
- GPS
- VHF
- Plotter

Inside Equipment

- Refrigerator
- Electric bilge pump
- Battery charger
- Heating
- Deep freezer
- Microwave oven
- Hot water
- Marine head
- Air conditioning
- Bow Thruster

Electrical Equipment

- Generator
- Shore power inlet
- New batteries - October 2019

Outside Equipment/Extras

- Cockpit cushions
- Swimming ladder
- New bottom Paint - September 2019

Disclaimer

The Company offers the details of this vessel in good faith but cannot guarantee or warrant the accuracy of this information nor warrant the condition of the vessel. A buyer should instruct his agents, or his surveyors, to investigate such details as the buyer desires validated. This vessel is offered subject to prior sale, price change, or withdrawal without notice.

Mechanical Disclaimer Engine and generator hours are as of the date of the original listing and are a representation of what the listing broker is told by the owner and/or actual reading of the engine hour meters. The broker cannot guarantee the true hours. It is the responsibility of the purchaser and/or his agent to verify engine hours, warranties implied or otherwise and major overhauls as well as all other representations noted on the listing.

Exclusions

Owner's personal belongings.

Disclaimer

The Company offers the details of this vessel or yacht in good faith but cannot guarantee or warrant the accuracy of this information nor warrant the condition of the vessel. A buyer should instruct his representatives, agents, or his surveyors, to investigate such details as the buyer desires validated. This vessel or yacht is offered subject to prior sale, price change, or withdrawal without notice.

PHOTOS

Salon Walk way



Salon Seating



Salon Seating 3



Salon Seating 2



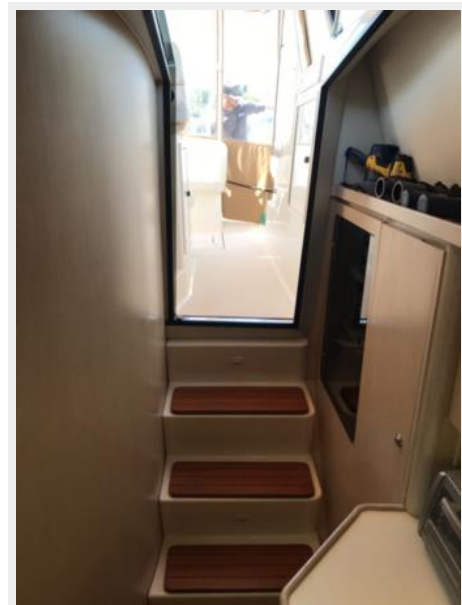
Vizio TV



Galley



Stairs



Galley Sink



Master



Forward Head



Forward Head 2



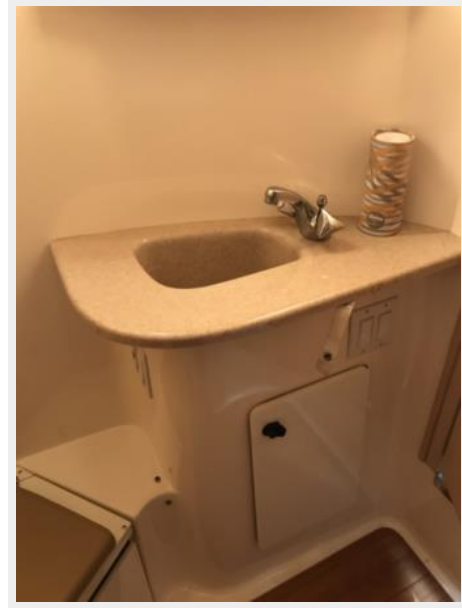
Aft Berth



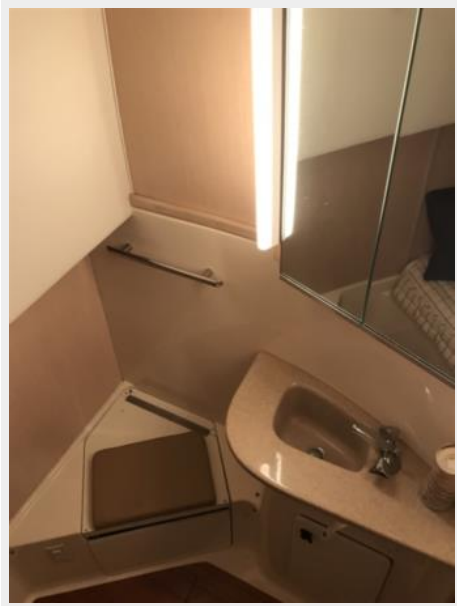
Aft Head 2



Aft Head Sink



Aft Head



Helm Seating



Helm Electronics



Helm Station



Helm Throttle



Helm Switches



Helm Throttles



Thruster



Helm AC Vent



Cockpit Sink & Fridge



Electric Panel



Engine Hour Gauge



Forward Hatch Window 2



Forward Hatch Window



Aft Seating



Davit



Swim platform Ladder



Transom Profile



Engine Hatch



Engine



Port Engine



Starboard Engine



Generator



Bow pulpit



Bow



Port Profile



Port Side



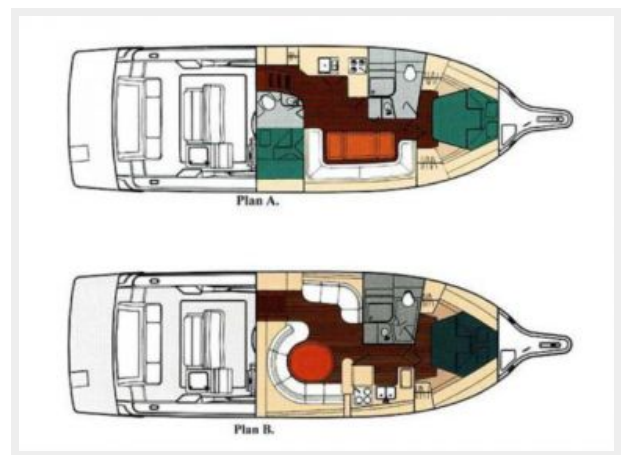
Port



Transom



layout



CONTACTS

Andrey Shestakov, leading yacht broker of the sales department of Shestakov Yacht Sales Inc. Shestakov Yacht Sales Inc., the official representative of the Miami/Fort Lauderdale FL headquarters.

Contact details

Email: andrey@shestakovyachtsales.com

Web: shestakovyachtsales.com/en/

Telephones

USA: +1(954)274-4435

Office hours

Monday – Saturday: **9:00 - 21:00** EDT

Sunday: **closed**

Address



Harbour Towne Marina, 850 NE 3rd St,
STE 213, Dania, FL 33004