

GRANDE FINALE — NOVA MARINE



Судостроитель: NOVA MARINE

Год постройки: 1996

Модель: Моторная яхта

Цена: ЦЕНА ЯХТЫ ПО ЗАПРОСУ

Местонахождение: United States

Длина общая: 80' 0" (24.38m)

Ширина: 19' 0" (5.79m)

Макс. осадка: 6' 0" (1.83m)

Купить **GRANDE FINALE — NOVA MARINE** а также выбрать подходящую вам яхту из нашего каталога яхт вам поможет опытный яхтенный брокер Андрей Шестаков. На сегодняшний день компания **Shestakov Yacht Sales Inc.** имеет большое количество яхт в собственном списке продаж, а также тесно сотрудничает со всеми крупными яхтенными производителями по всему миру.

Для того чтобы купить яхту **GRANDE FINALE — NOVA MARINE** а также проконсультироваться по любому вопросу связанному с покупкой, продажей, чартером яхт позвоните по телефону **+7(918)465-66-44**.

ОГЛАВЛЕНИЕ

| | |
|-------------------------------|----|
| ОГЛАВЛЕНИЕ | 2 |
| ХАРАКТЕРИСТИКИ | 4 |
| Обзор | 4 |
| Основная информация | 4 |
| Размеры | 4 |
| Скорость, вместимость и масса | 4 |
| Размещение | 4 |
| Корпус и палуба | 5 |
| Информация о двигателе | 5 |
| ПОДРОБНОЕ ОПИСАНИЕ | 6 |
| Overview | 6 |
| Fly Bridge | 6 |
| Aft Deck | 6 |
| Salon | 7 |
| Accommodations | 7 |
| Galley and Laundry | 8 |
| Electronics and A/V Equipment | 9 |
| Deck Equipment | 9 |
| Mechanical & Electrical | 10 |
| Safety Equipment | 11 |
| Construction | 11 |
| Исключения | 11 |
| Отказ от ответственности | 11 |
| ФОТОГРАФИИ | 12 |
| КОНТАКТЫ | 18 |
| Контактная информация | 18 |
| Телефоны | 18 |
| Время работы | 18 |

Адрес

18

ХАРАКТЕРИСТИКИ

Обзор

GRANDE FINALE is a high-quality motor yacht, designed for comfortable blue water cruising. The layout makes her a very comfortable live aboard Caribbean cruiser and/or charter yacht, while her total refit in 2008/2009 restored a comfortable, homey and elegant yacht.

Now is your opportunity to purchase a very spacious, well equipped 4 stateroom plus crew, Euro-style yacht at a competitive price!

Основная информация

Тип судна: Моторная яхта

Подкатегория: Flybridge

Модельный год: 1996

Год постройки: 1996

Страна: United States

Верх: Bimini Top

Размеры

Длина общая: 80' 0" (24.38m)

Ширина: 19' 0" (5.79m)

Макс. осадка: 6' 0" (1.83m)

Трапы: 16' 5" (5.00m)

Скорость, вместимость и масса

Дальность на крейсерской скорости:
17

Дальность на макс. скорости: 20 Kts.

Водоизмещение: 143000 Pounds

Вместимость воды: 300 Gallons

Вместимость сточного бака: 100 Gallons

Объем топливного бака: 2000 Gallons

Размещение

Всего кают: 4

Всего ком. состава: 4

Корпус и палуба

Материал корпуса: Fiberglass

Информация о двигателе

Двигатели: 2

Производитель: MTU

Модель: 12V183TE93

Тип двигателя: Inboard

Тип топлива: Diesel

ПОДРОБНОЕ ОПИСАНИЕ

Overview

Board GRANDE FINALE from the spacious aft deck with teak decking that was new in 2012. Enter the salon through sliding glass doors. Immediately to port is a long semi-circular settee with cocktail table. Forward is a dual spiral staircase, one leading up to the fly bridge while the other descends to the VIP stateroom and the twin bed guest stateroom, each with private baths. Also located in this area is the Laundry Room to port and the Engine Room aft. Returning to the salon, there is a wet bar and china storage cabinet/buffet forward portside and to starboard are two additional settees with large flat screen TV between. A private spiral staircase aft leads to the luxurious Master Stateroom with his and hers baths.

A large, open, country kitchen style galley is forward of the main salon with a day head opposite the galley. A dinette is just forward to port. There is a breakfast bar with bar stools in the pilothouse providing easy access from the open galley. The helm station to starboard with doors port and starboard to access the side decks.

A centerline stairway from the pilothouse leads to 2 forward staterooms each with twin berths and private baths. Depending on the level of service required both cabins can be used for crew or the larger starboard stateroom can be a 4th owner/guest cabin.

Fly Bridge

The Flybridge area offers the spaciousness and amenities of a much larger yacht.

- U-Shaped built in settee with cushions to port and (2) deck chairs, seats a total of eight
- Reclining sun pad
- Bimini top which can be folded up or left open to shade the main area
- Wet bar with built-in refrigerator, Jenn Aire grill and icemaker
- Forward bridge enclosure
- Custom radar arch with backlit nameboards port and starboard
- Teak decking
- Dual captain's helm seats
- Staircase down to the salon port, forward

Aft Deck

- New teak decking 2012
- Spacious built-in settee with cushions and granite topped hi-lo table which seats a total of eight
- Molded-in granite topped cabinetry with built-in refrigerator, icemaker, wine cooler, and sink

- 37" Vizio LCD flat screen TV to starboard with cover
- Port and starboard boarding gates
- Air conditioning vents (area could easily be enclosed for enhanced cooling)
- Engine & thruster controls to port
- Access to teak covered swim platform via symmetrical curved teak steps port and starboard
- Full walk-around side decks leading to foredeck with new non-skid painted surfaces 2012
- Deck chairs

Salon

- Contemporary Euro-style upscale décor package
- Custom designed light lacquered interior
- Soft light-colored leather seating with accent pillows
- Full wet bar with sink, crystal and bottle storage
- Audio/Video equipment in cabinetry
- Custom granite countertops
- New 42" Sanyo LCD Flat screen TV
- On-Deck head with granite countertops, hammered nickel sink and pickled ash flooring
- Designer lamps and accessories
- Duette shades and padded wall coverings
- Overhead sculptured detail ceiling with mirror and Halogen lighting
- Portside door all the way forward

Accommodations

MASTER - AFT

- Private access stairway from Salon
- Queen centerline berth
- Lounge seating area
- Entertainment center w/Dynex TV
- Walk-In Closet
- Abundant drawer and cabinet storage
- Vanity
- Opening portholes
- His & Her en suite baths w/center access tub & shower-Marble countertops

VIP - PORT AMIDSHIP

- Diagonal Queen walk-around berth
- Entertainment center with Insignia LCD Flat screen TV
- Granite countertops
- Hanging Locker

- Drawer and cabinet space
- Lounge seating area
- Vanity with stool
- En suite head w/shower

GUEST STATEROOM-STARBOARD AMIDSHIP

- Twin beds with padded headboards
- Granite countertops
- Drawer and cabinet space
- Hanging locker
- Lounge seating area
- En suite head w/shower

4TH GUEST CABIN OR 2ND CREW QUARTERS

- Fully forward to starboard
- TV/VCR combination
- Large over/under berths
- Hanging locker
- Drawer and cabinet space
- Vanity/Desk with granite countertops
- En Suite head w/shower

CREW QUARTERS

- Fully forward to port
- Large over/under berths
- TV/VCR combination
- Hanging locker
- Drawer and cabinet space
- En Suite head w/shower

Galley and Laundry

- Custom granite countertops
- U-Shaped light-colored leather dining settee
- Flat screen LCD TV built-in above the galley countertop
- Open bar countertop area with 2 stools
- GE Profile side-by-side stainless steel refrigerator with ice and water dispensers
- Kitchen Aid stainless steel convection oven
- GE Profile cooktop
- GE Profile microwave/convection oven built-in overhead

- Garbage disposal
- GE Profile stainless steel dishwasher
- Stainless steel sink with custom spray faucet
- Pickled ash flooring
- Oster toaster/broiler oven

LAUNDRY ROOM

- Full size Whirlpool Washer
- Full size Whirlpool Dryer
- Storage shelves and compartments
- Full linen closet

Electronics and A/V Equipment

- ZF electronic controls
- (2) VEI color monitors with Maptech – Flybridge
- (2) LG Flatron wide color monitors - Pilothouse
- Furuno Nav Net – Radar/GPS-Plotter/Depth
- Furuno Nav-Pilot autopilot
- Raytheon D GPS with plotters
- Autohelm depth finder
- (2) Icom IC-504 VHF radios/hailers
- (2) Furuno 48 mile radar
- (2) Danforth compasses – 5”
- Color sonar – 180 degrees
- Camera
- G-4 Sat phone
- Panasonic intercom and phone system
- (2) Line cellular phone
- Printer/fax machine
- Rayline spotlight
- Sony XM/AM/FM/CD Player
- Satellite self-hunting TV dish
- (3) Receivers
- (7) Televisions
- VCR/CD players
- Surround sound in Salon

Deck Equipment

MAIN DECK

- Walk-around side decks
- All non-skid resurfaced and painted 2012
- Simpson Lawrence windlass
- (2) Anchors – Fortress & Plow
- 150' chain
- (2) SL Pacific V4000 capstans – bow and stern
- Marquipt Tide Ride ladder
- Swim ladder
- Foredeck sun lounge with pads
- Port & Starboard Foredeck built-in dunnage boxes
- Port & Starboard forward boarding gates
- Stainless steel loop railings

BOAT DECK

- Nautical Structures 1500 lb davit
- 2007 14' Novurania tender with 65 hp Yamaha 4-stroke outboard
- 10 Man canister life raft

Mechanical & Electrical

- Twin MTU 12V183 TE93 @1150 hp each - 5850 hours
- 2 x 40kW Northern Lights generators w/sound shields
- NAIAD #254 Stabilizers 4.5 sq.ft.
- 16 hp Side power electric bow thruster
- Marine Air 142,000 BTU reverse cycle air conditioning – 7 Zone
- 2 x Sea Recovery 800 GPD Aqua Whisper water makers
- Extensive spare parts inventory
- Mathers electronic control synchronizers
- Hynautic steering
- Vacuflush heads
- Hot Water heater
- Central vacuum
- Trim tabs with level indicators
- Electric fuel gauges
- 12/24 VDC
- 120/240 VAC
- Single 100 Amp shore power cord
- Inverter – Mastervolt
- Charles 9000 C-Charger (battery charger)
- Fuel site tubes
- Wipers & washers
- VDO gauges

Safety Equipment

- Fireboy FE24L Halon system
- Sea water firefighting station – engine driven
- Hand-held fire extinguishers throughout the vessel
- 10 Man life raft
- (2) Life rings
- EPIRB
- Flares
- First aid equipment

Construction

Nova Marine Company Ltd. who produces the Novatec line of yachts has been building since 1983, including military patrol boats. They employ the latest vacuum bagging techniques during construction and the best core materials above the waterline.

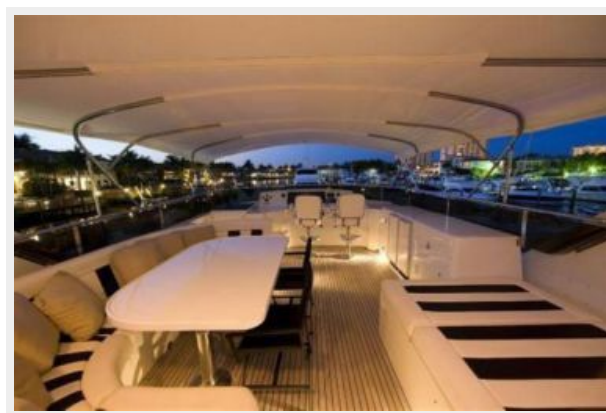
Исключения

При продаже яхты исключаются личные вещи владельца.

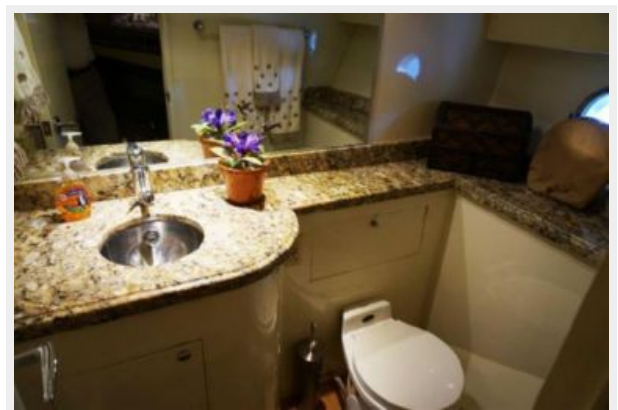
Отказ от ответственности

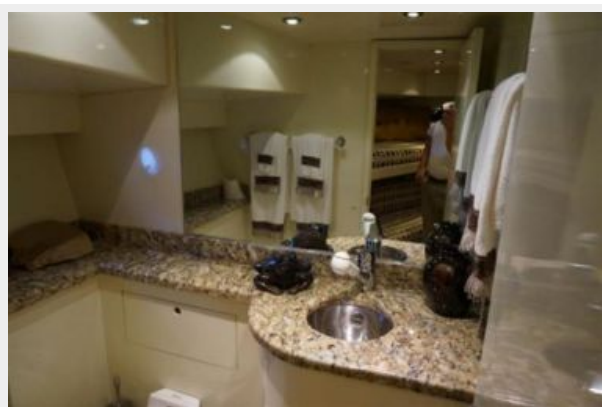
Компания предоставляет описание судна или яхты добросовестно, но не может гарантировать точность этой информации, а также не ручается за техническое состояние. Покупатель должен проинструктировать своих агентов или оценщиков исследовать представленную информацию более подробно, по собственному желанию. Продажа судна или яхты, изменение цены или снятие с продажи будет происходить без предварительного уведомления.

ФОТОГРАФИИ













КОНТАКТЫ

Андрей Шестаков (Andrey Shestakov) – ведущий яхтенный брокер отдела продаж яхт и судов компании Shestakov Yacht Sales Inc. Официальный представитель Shestakov Yacht Sales Inc. для русскоговорящих клиентов в центральном офисе компании в Майами/Форт Лодердейл/Флорида/США.

Контактная информация

Email: andrey@shestakovyachtsales.com

Web: shestakovyachtsales.com

Телефоны

Краснодарский край: **+7(918)465-66-44**

США, Майами, Флорида: **+1(954)274-4435**

Время работы

Понедельник – Суббота: **9:00 - 21:00**
EDT

Воскресенье: **Закрето**

Адрес



Harbour Towne Marina, 850 NE 3rd St,
STE 213, Dania, FL 33004