

SOMEWHERE I BELONG — AZIMUT



Builder: [AZIMUT](#)

Year Built: 2013

Model: Motor Yacht

Price: PRICE ON APPLICATION

Location: United States

LOA: 70' 0" (21.34m)

Cruise Speed: 27 Kts. (31 MPH)

Max Speed: 33 Kts. (38 MPH)

Our experienced yacht broker, Andrey Shestakov, will help you choose and buy a yacht that best suits your needs **Somewhere I Belong — AZIMUT** from our catalogue. Presently, at Shestakov Yacht Sales Inc., we have a wide variety of yachts available on our sale's list. We also work in close contact with all the big yacht manufacturers from all over the world.

If you would like to buy a yacht **Somewhere I Belong — AZIMUT** or would like help answering any questions concerning purchasing, selling or chartering a yacht, please call **+1(954)274-4435**

TABLE OF CONTENTS

TABLE OF CONTENTS	2
SPECIFICATIONS	3
Overview	3
Basic Information	3
Dimensions	3
Speed, Capacities and Weight	4
Accommodations	4
Hull and Deck Information	4
Engine Information	4
DETAILED INFORMATION	5
Vessel Information	5
Exclusions	10
Disclaimer	10
PHOTOS	11
CONTACTS	35
Contact details	35
Telephones	35
Office hours	35
Address	35

SPECIFICATIONS

Overview

To schedule a private FaceTime or video tour, contact me and make arrangements

With her soaring lines and world-famous window design by Stefano Righini, the 70' Azimut Motor Yacht has been turning heads since her emergence into the yachting world.

Her dual SeaKeeper Gyroscopic Stabilizers assure that she delivers an impressively stable ride while cruising, and even more so at anchor. Her flybridge is one of the largest in its category and is equipped with a retractable sunroof. The extremely generous cockpit provides tremendous shade for lunch or cocktails/appetizers in total comfort. Entering the salon, she offers a spacious layout with ample V-Kool filmed windows that flow seamlessly into the outdoors. The well-equipped galley overlooks her salon & formal dinette with seating for 8 guests. Moving forward into the lower deck she has the most comprehensive layout in her class with 4 staterooms & 4 heads providing five-star accommodations.

She's well maintained by her crew, and all services are up to date including her recent ***1000 hour*** service.

Basic Information

Category: Motor Yacht

Sub Category: Flybridge

Model Year: 2013

Year Built: 2013

Country: United States

Fly Bridge: Yes

Dimensions

LOA: 70' 0" (21.34m)

Speed, Capacities and Weight

Cruise Speed: 27 Kts. (31 MPH)

Max Speed: 33 Kts. (38 MPH)

Water Capacity: 317 Gallons

Holding Tank: 119 Gallons

Fuel Capacity: 1 Gallons

Accommodations

Total Cabins: 4

Total Heads: 4

Hull and Deck Information

Hull Material: Fiberglass

Engine Information

Engines: 2

Manufacturer: MAN

Fuel Type: Diesel

DETAILED INFORMATION

Vessel Information

Notables and Upgrades

- Twin MAN Engines 1360 hp each (1000 hour service completed)
- (4) Stateroom/ (4) Head Layout with Crew Quarters Aft
- Custom Zebrano wood interior throughout
- Custom Battleship Grey Hull with Bright Arctic White gel coat
- (2) SeaKeeper Gyro's
- Ray Marine Electronics Package
- Satellite TV
- Watermaker
- Joystick Engine Controls
- Hydraulic Swim Platform
- Underwater lights
- Hardtop with Retractable Sunroof
- FLIR Night Vision Camera
- GOST Security Systems

Salon:

- Zebrano Cream Wood Interior
- Custom Decor Upgrade
- 32" Plasma TV
- DVD & Apple TV
- Bose Surround Sound System
- Custom wine cooler and cabinetry
- Custom U-shaped leather convertible sofa with custom stitching and a pullout bed
- Oversized leather ottoman or coffee table
- Custom window treatments with blinds and curtains for salon door
- Blinds operated by electric remote
- Vinotemp Wine Fridge
- V-Kool Window Film
- Custom Wood Flooring
- Maglite Headliners
- Recessed LED Lights
- Outlet Receptacles

Galley

- Zebrano Wood Work and Cabinetry
- Emperador Marble Countertop

- Miele Cooktop (4) Burner
- Miele Oven
- Miele Microwave
- Miele Dishwasher
- Waeco Refrigerator & Freezer
- Glassware, Dinnerware, and Cutlery for (8) Guests
- Window Bar Overlooking Salon
- Formal Dinette for (8) Guests
- Custom Wood Flooring
- Maglite Headliners
- Recessed LED Lights
- Outlet Receptacles
- Franke Stainless steel sink with nozzle and wood cutting boards
- Miele Touchtronic W3033 washer (located in the companionway to starboard)
- Miele Touchtronic T8013C Dryer (located in the companionway to port)

Lower Helm

- Raymarine G Series Electronics Package
- (2) Raymarine RAY240 VHF with repeaters
- Raymarine ST60 depth/speed
- FLIR night vision
- Side-Power bow and stern thrusters
- Electronic remote control for throttles
- Windlass chain counter
- Trim tab controls and indicators
- (2) MAN Engine Displays
- Leather Wrapped Steering Wheel
- Start/Stop Controls
- Throttles
- Spot Light Controls
- Xenta Joystick Controls
- Horn single trumpet electric
- AC/DC Switch Panels
- Azimut Montronic display
- Raymarine Autopilot
- GOST Security System with Aft Facing Camera & Engine Room Camera
- Leather upholstered helm seats with headrests

VIP Stateroom (Forward)

- Centerline Queen Berth with Storage
- (2) Portholes that can be opened
- (8) Windows (3 to port, 4 to starboard, and 1 in the head)
- Samsung 26" LED TV, DirectTV Receiver

- Custom pleated blinds
- Custom Headboard
- Hanging Lockers
- Cabinet & Drawer Storage
- En-Suite Head with Shower
- TV/DVD
- Custom Carpeting
- Maglite Headliners
- Recessed LED Lights
- Outlet Receptacles

Guest Stateroom (Port)

- Queen Birth with Underlying Storage
- Hanging Locker
- En-Suite Head w/ Shower
- Porthole Window
- Samsung 26" TV/DVD
- Custom Carpeting
- Maglite Headliners
- Recessed LED Lights
- Outlet Receptacles

Guest Stateroom (Starboard)

- (2) Twin Berths with Storage & Optional Conjoining Insert
- Hanging Locker
- Porthole
- En-Suite Head with Shower
- Samsung 26" TV/DVD
- Custom Carpeting
- Maglite Headliners
- Recessed LED Lights
- Outlet Receptacles

Master Stateroom

- Full Beam
- Centerline Queen Birth with Storage
- Custom Headboard
- Custom overhead soffit with lighting
- Storage and safe under berth
- Samsung LED 40" TV, DirectTV Receiver
- (4) Portholes that can be opened
- (8) Windows Total

- Custom window treatments with Venetian blinds and electric blackout blinds
- Lounge Seating for two with Table (Starboard Side)
- Vanity with Drawer Storage (Port Side)
- Hanging Lockers
- V-Kool Window Film
- En-Suite Head with Shower
- Custom Carpeting
- Maglite Headliners
- Recessed LED Lights
- Outlet Receptacles

Flybridge Helm

- Raymarine G Series Electronics Package
- Raymarine ST60 (Wind/Speed/Depth)
- Joystick controls
- Azimut Montronic display
- (2) Raymarine RAY240 VHF with repeaters
- Raymarine ST60 depth/speed
- FLIR night vision
- Side-Power bow and stern thrusters
- (2) MAN Engine Displays
- Leather Wrapped Steering Wheel
- Start/Stop Controls
- Electronic remote control for throttles
- Windlass chain counter
- Trim tab controls and indicators
- Xenta Joystick Controls
- Horn single trumpet electric
- Jabsco electric searchlight control
- Teak decks

Flybridge Equipment

- Access from cockpit stairway
- Access hinged hatch opening
- Teak table with a high gloss finish and deck chairs
- Bar with sink, cutting board, Vitirilo refrigerator, Raritan icemaker, and (2) Kenyon electric grills
- Large sunpad lounges with cushions
- Fusion Stereo MS-IP700
- Hardtop with Retractable Sunroof
- (9) JL outdoor speakers
- Fire fighting pump controls
- Teak decks

- (2) Floodlights
- Sunbrella custom canvas covers for all ext furniture, wet bar, and sun pads

Crew Quarter (Aft)

- (2) Twin Berths
- Head with Shower
- TV/DVD

Cockpit and Deck Equipment

- Built-in U-shaped seating with cushions and storage below
- Teak table with a high gloss finish
- Custom bar with Waeco refrigerator
- Samsung 32" TV with Direct TV
- Sunbrella custom canvas covers for all exterior furniture and bar
- Deck winches
- Teak decks
- Marquipt sea stairs with mounts, port, and starboard
- Cockpit boarding gates
- Access to Salon
- Stair Access to Bridge

Transom

- Access to cockpit from swim platform with 2 ladders
- Transom door to the engine room
- (2) Electric warping winches
- Opacmare telescoping passerelle
- Hydraulic swim platform with teak decking
- Shower with hot and cold water
- Boarding ladder
- Underwater lights at the transom

Engine Room Equipment

- Twin MAN Engines at 1360 HP on each side
- Kohler Generators with sound shields
- Side-Power bow and stern thrusters with variable speed and proportional deflection with S-Link system
- (2) Seakeeper Gyroscopic Stabilizers
- Cruisair Tropical Spec A/C System
- Xenta wireless yacht controller for engines and thrusters
- (2) 220v fans
- (2) 220v air extractors
- Racor fuel filters

- Algae-X fuel polishing system
- 3" Stainless Steel propeller shaft
- (2) Bronze 5-bladed propellers
- watermaker
- (2) 50 amp shore power cords
- Oil change system - 24volt pump servicing engines, generator, and gears
- Fuel primer system - manual pumps on engines and generators
- Blackwater pump
- Bilge vacuum system eliminating any water in bilges
- An additional heavy-duty sump pump
- (3) High definition color cameras
- Oil Change System
- FM-200 Seafire Fire System
- Glendinning Cablemaster
- Central Vacuum System

Electrical Equipment

- Racor fuel filters
- (2) Glendenning cablemasters
- Mastervolt 12v/25amp battery charger
- Wireless smoke detectors throughout
- Custom installation for inverters, chargers, batteries, battery boxes
- (2) Additional weatherproof 110v outlets
- (6) Additional 110v outlets
- (6) Additional 12v outlets
- Central vacuum system

Exclusions

Owner's personal belongings.

Disclaimer

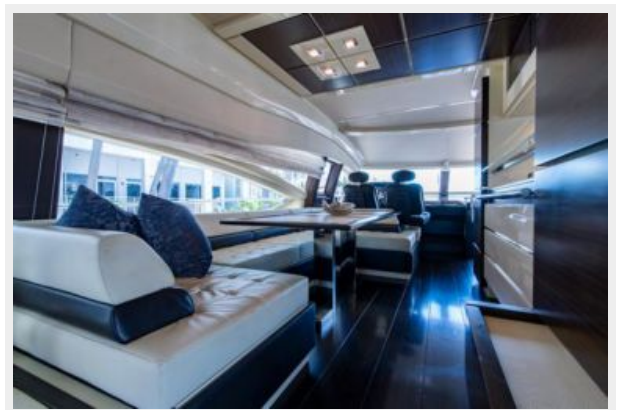
The Company offers the details of this vessel or yacht in good faith but cannot guarantee or warrant the accuracy of this information nor warrant the condition of the vessel. A buyer should instruct his representatives, agents, or his surveyors, to investigate such details as the buyer desires validated. This vessel or yacht is offered subject to prior sale, price change, or withdrawal without notice.

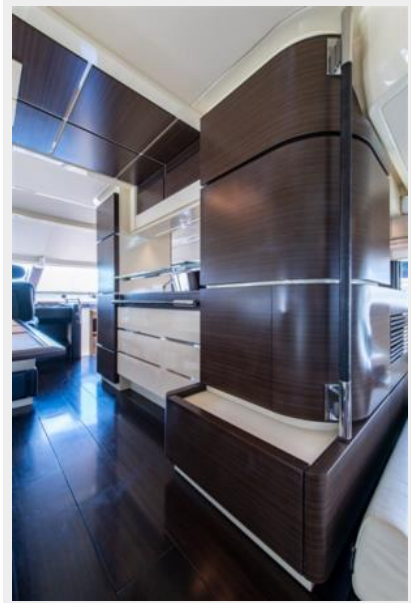
PHOTOS



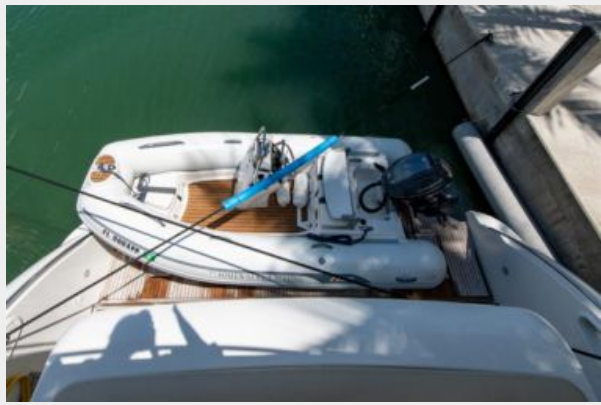
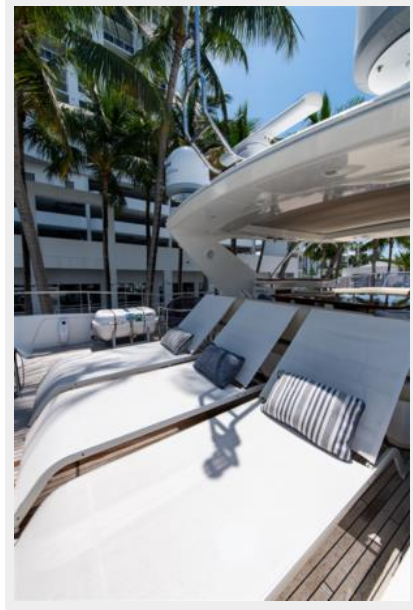


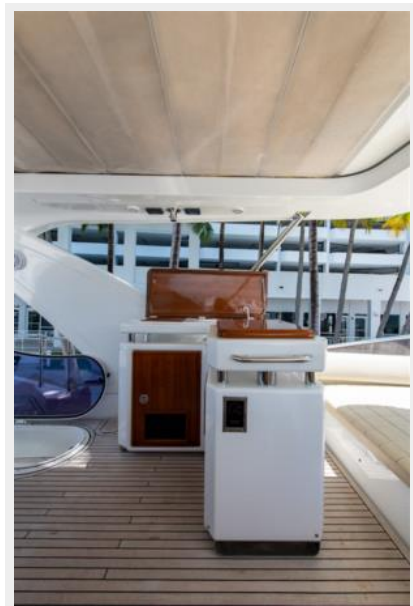
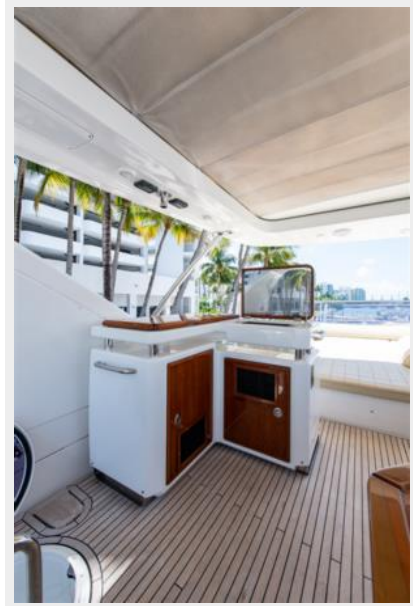








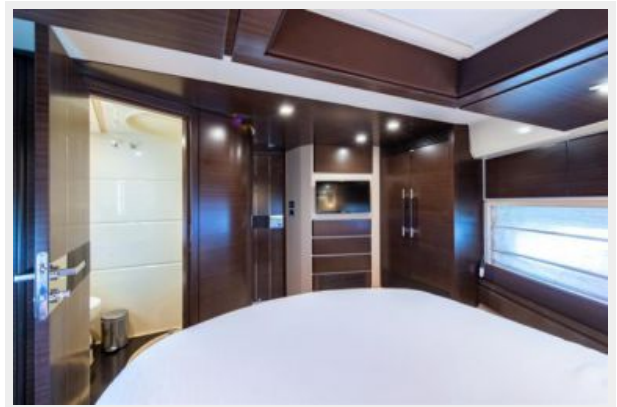
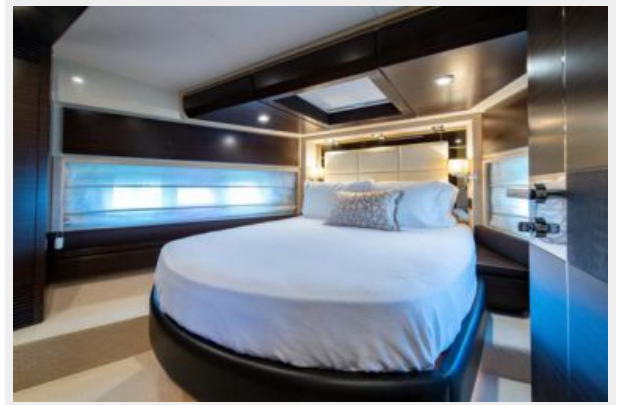


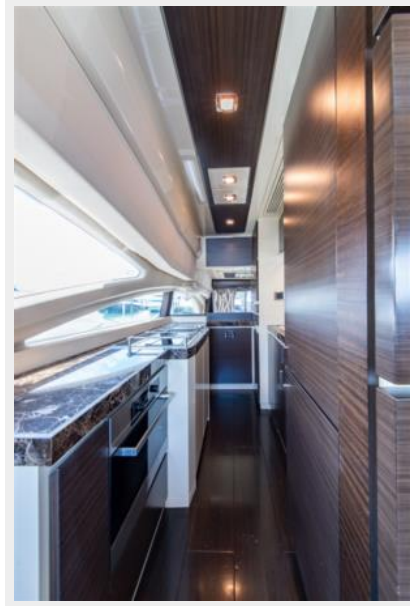
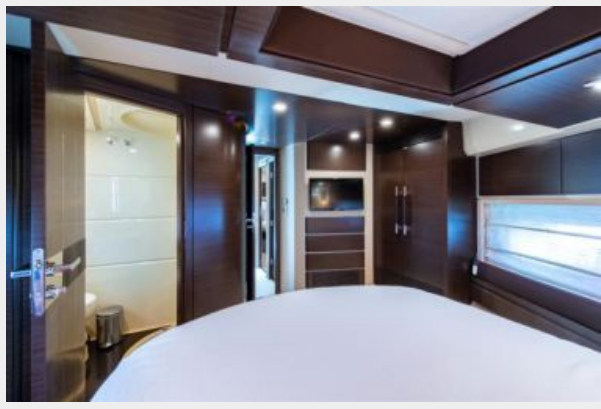










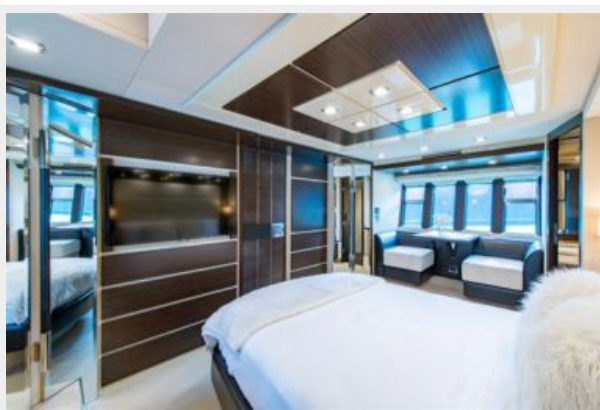
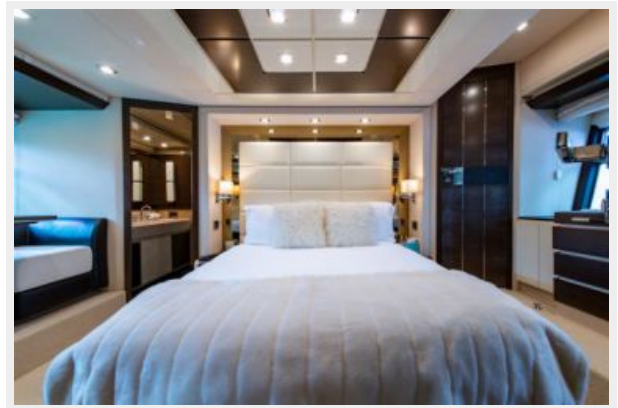


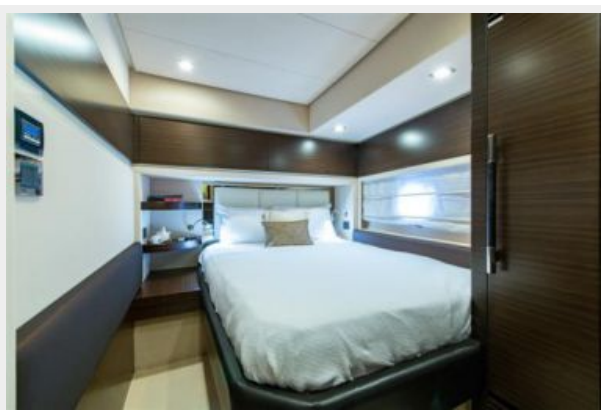
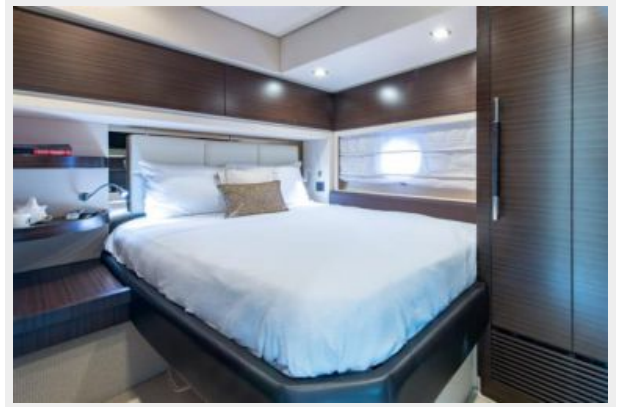


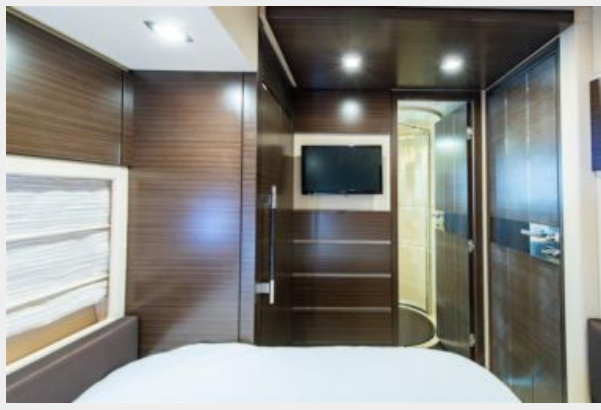




















CONTACTS

Andrey Shestakov, leading yacht broker of the sales department of Shestakov Yacht Sales Inc. Shestakov Yacht Sales Inc., the official representative of the Miami/Fort Lauderdale FL headquarters.

Contact details

Email: andrey@shestakovyachtsales.com

Web: shestakovyachtsales.com/en/

Telephones

USA: +1(954)274-4435

Office hours

Monday – Saturday: **9:00 - 21:00** EDT

Sunday: **closed**

Address



Harbour Towne Marina, 850 NE 3rd St,
STE 213, Dania, FL 33004