

MIRAGE — CATALINA



Builder: CATALINA

Year Built: 1994

Model: Daysailer

Price: PRICE ON APPLICATION

Location: United States

LOA: 32' 0" (9.75m)

Beam: 11' 9" (3.58m)

Min Draft: 6' 0" (1.83m)

Max Draft: 6' 0" (1.83m)

Our experienced yacht broker, Andrey Shestakov, will help you choose and buy a yacht that best suits your needs **Mirage — CATALINA** from our catalogue. Presently, at Shestakov Yacht Sales Inc., we have a wide variety of yachts available on our sale's list. We also work in close contact with all the big yacht manufacturers from all over the world.

If you would like to buy a yacht **Mirage — CATALINA** or would like help answering any questions concerning purchasing, selling or chartering a yacht, please call **+1(954)274-4435**

TABLE OF CONTENTS

TABLE OF CONTENTS	2
SPECIFICATIONS	4
Overview	4
Basic Information	4
Dimensions	4
Speed, Capacities and Weight	4
Accommodations	4
Hull and Deck Information	5
Engine Information	5
DETAILED INFORMATION	6
Main Description	6
Galley	6
Electronics	6
Electrical	6
Deck	6
Engine	6
SAILS AND RIGGING	6
Additional Information	7
Walkthrough	7
Disclaimer	7
Exclusions	7
Disclaimer	8
PHOTOS	9
CONTACTS	12
Contact details	12
Telephones	12
Office hours	12
Address	12

SPECIFICATIONS

Overview

Mirage is a Catalina 320. She is a great combination of affordability, ease of sailing and usable space. Mirage is a two owner boat with the current owner having maintained her well and has equipped her for cruising since 2012. Current owner has priced her aggressively as he has decided to make a move to a Trawler. Don't miss your opportunity to set sail on MIRAGE!

Basic Information

Category: Daysailer

Sub Category: Motorsailor

Model Year: 1994

Year Built: 1994

Country: United States

Dimensions

LOA: 32' 0" (9.75m)

LWL: 28' 0" (8.53m)

Beam: 11' 9" (3.58m)

Min Draft: 6' 0" (1.83m)

Max Draft: 6' 0" (1.83m)

Speed, Capacities and Weight

Displacement: 11700 Pounds

Water Capacity: 49 Gallons

Holding Tank: 19 Gallons

Fuel Capacity: 20 Gallons

Accommodations

Total Cabins: 2

Total Heads: 1

Hull and Deck Information

Hull Material: Fiberglass

Engine Information

Engines: 1

Manufacturer: Perkins

Model: M-30

Engine Type: Inboard

Fuel Type: Diesel

DETAILED INFORMATION

Main Description

Mirage is a Catalina 320. She is a great combination of affordability, ease of sailing and usable space. Mirage is a two owner boat with the current owner having maintained her well and has equipped her for cruising since 2012. Current owner has priced her aggressively as he has decided to make a move to a Trawler. Don't miss your opportunity to set sail on MIRAGE!

Galley

Double Stainless Steel Sink 6 Gallon Water Heater Dinette Seating for 4 Upper and Lower Stowage: 4 covered bins, 3 drawers, 1 cabinet, 1 cubby, 1 dry storage Beige Corian countertops Hillerange 2 burner stove -Propane

Electronics

Standard Horizon GX1700 VHF with GPS Garmin Echomap Chirp 54cv with depth finder 40 amp Battery Charger (12/40-3) Raymarine depth finder

Electrical

Maxwell 500 Electric Windless 2 Kiddie ABC Fire Extinguisher 12 Volt Power 30 AMP Shore Power Breaker Panel 2 Batteries - 8D Battery Charger Dual Blue Tooth AM/FM Stereo

Deck

Fortress FX-16 16lbs Fiberglass Deck Material Stainless Steel Anchor Davit 10 Hatches, 1 Entrance, 9 Ventilation Aluminium Rub Rail Stainless Steel Cleats (2) 10 inch Forequarter, (2) 10 inch stern Stainless Steel 4 step ladder (transom) Transom Door Helm Seat - elevated Self Bailing Cockpit Aft Deck Shower Stainless Steel Bow Rails 1/8 Coverage

Engine

Perkins M-30 Engine 1993 - 1604 hours Fresh Water Cooling Racor Fuel Filter Internal Sea Strainer Engine Alarm Engine Hour Meter

SAILS AND RIGGING

Mirage is well equipped with Sails. She has two original sails that are in excellent condition as well as a set of Lead Sails. You are ready for all wind conditions with the 110 genoa, the 135 genoa, as well as the 155 genoa. She also comes with a whisker pole and a spinnaker pole. The spinnaker is a 3/4 ounce heavy air sail. This is a great boat for the amateur racer or the coastal cruiser. Rigging - Full Winches - Lewmar Boom Vang - stainless Nylon Sails Wire Standing Rigging Cruise and Race Equipped Schaefer - Extruded Aluminum Roller Furling 4 Self Tailing Winches

Additional Information

Fenders included Bottom Painted - February 2018 Hull Color - White Canvas Color - Blue

Walkthrough

Starting aft from her sugar scoop stern you can see the large 4 step boarding ladder. This design makes it easy to get out of the water to the cockpit. There is a set of Weaver snap davits here to facilitate an Avon Dinghy. To port and starboard are a set of push pit seats complete with cushions. The entire is roomy and designed for both a racing mind set as well as a cruising couple. There is a lovely varnished teak cockpit table forward of the helm and there is a lazette under the port side seating area. All of the winches are self tailing making it easier to short hand the boat. A set of rope clutches on both port and starboard side keep your halyards and other lines organized. Stepping down into the cabin, you notice that it feels like a larger boat. This is due to both the generous 9 beam as well as the efficient use of space. The galley is to port at the bottom of the steps. To starboard you have the entrance to the aft master cabin. This stateroom has an extremely large double berth as well as two shelves, two drawers and a hanging locker. There is storage underneath the berth as well. Just forward of the aft stateroom is the head. The head is large for a 32 footer and includes a shower as well as ample storage. To port and forward of the galley is the navigation station and the electrical panel. There is a long settee forward of that. The dinette is forward of the head and across from the long settee. The dinette drops down to form a large bunk for 2 people. Towards the bow is another cabin. It has a v-berth and storage drawers. The forward cabin can be opened up with a set of panels that drop into the bulkhead giving her owner two nice options on privacy or openness of layout.

Disclaimer

The Company offers the details of this vessel in good faith but cannot guarantee or warrant the accuracy of this information nor warrant the condition of the vessel. A buyer should instruct his agents, or his surveyors, to investigate such details as the buyer desires validated. This vessel is offered subject to prior sale, price change, or withdrawal without notice.

Exclusions

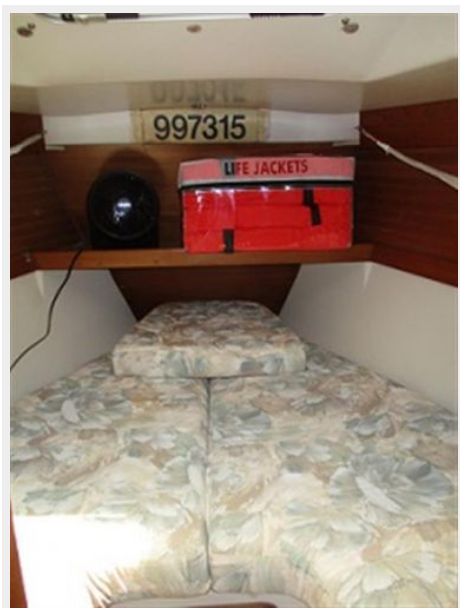
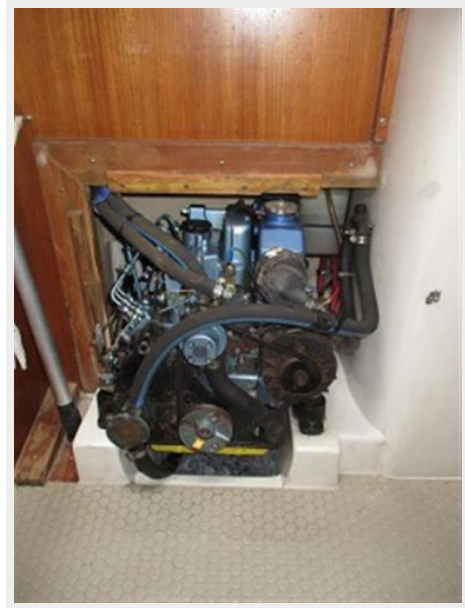
Owner's personal belongings.

Disclaimer

The Company offers the details of this vessel or yacht in good faith but cannot guarantee or warrant the accuracy of this information nor warrant the condition of the vessel. A buyer should instruct his representatives, agents, or his surveyors, to investigate such details as the buyer desires validated. This vessel or yacht is offered subject to prior sale, price change, or withdrawal without notice.

PHOTOS







CONTACTS

Andrey Shestakov, leading yacht broker of the sales department of Shestakov Yacht Sales Inc. Shestakov Yacht Sales Inc., the official representative of the Miami/Fort Lauderdale FL headquarters.

Contact details

Email: andrey@shestakovyachtsales.com

Web: shestakovyachtsales.com/en/

Telephones

USA: +1(954)274-4435

Office hours

Monday – Saturday: **9:00 - 21:00** EDT

Sunday: **closed**

Address



Harbour Towne Marina, 850 NE 3rd St,
STE 213, Dania, FL 33004