

SAPPHIRE — CHEOY LEE



Builder: CHEOY LEE

Year Built: 1991

Model: Motor Yacht

Price: PRICE ON APPLICATION

Location: Mexico

LOA: 96' 0" (29.26m)

Beam: 21' 2" (6.45m)

Max Draft: 6' 5" (1.96m)

Cruise Speed: 15 Kts. (17 MPH)

Max Speed: 20 Kts. (23 MPH)

Our experienced yacht broker, Andrey Shestakov, will help you choose and buy a yacht that best suits your needs **Sapphire — CHEOY LEE** from our catalogue. Presently, at Shestakov Yacht Sales Inc., we have a wide variety of yachts available on our sale's list. We also work in close contact with all the big yacht manufacturers from all over the world.

If you would like to buy a yacht **Sapphire — CHEOY LEE** or would like help answering any questions concerning purchasing, selling or chartering a yacht, please call **+1(954)274-4435**

TABLE OF CONTENTS

TABLE OF CONTENTS	2
SPECIFICATIONS	4
Overview	4
Basic Information	4
Dimensions	4
Speed, Capacities and Weight	4
Accommodations	4
Hull and Deck Information	5
Engine Information	5
DETAILED INFORMATION	6
Price, condition and value	6
Aft Deck and Salon	6
Engines	6
Accommodations	6
Galley	7
Electronics	7
Tanks	8
Exclusions	8
Disclaimer	8
PHOTOS	9
Stern View	9
Aft Garage	9
Bridge Deck	10
Flybridge Console	10
Flybridge Aft View	10
Stainless Galley	10
Master Suite	10
Master Berth	11

Master Bath	11
Master Shower/Jacuzzi	11
Port Guest Stateroom	11
Port Guest Stateroom	11
Stbd Guest Stateroom	12
Pilothouse Seating	12
Pilothouse Console	12
Ondeck VIP Suite	12
VIP Head	12
VIP Jacuzzi Tub	12
Port Engine	13
Strb. Engine	13
Crew Salon	13
Crew Galley	13
Crew Bunks	13
Crew w/head opposite	13
Captain's Quarters	14
Captain Berth	14
CONTACTS	16
Contact details	16
Telephones	16
Office hours	16
Address	16

SPECIFICATIONS

Overview

Price reduced \$50,000 March 5, 2019!! This yacht is well maintained. New Hull paint 2018. Many recent new items and services. All new foredeck teak. Stabilizers, generators, main engines recently serviced. New salon floors and curtains

Basic Information

Category: Motor Yacht

Model Year: 1991

Year Built: 1991

Country: Mexico

Fly Bridge: Yes

Cockpit: Yes

Dimensions

LOA: 96' 0" (29.26m)

Beam: 21' 2" (6.45m)

Max Draft: 6' 5" (1.96m)

Speed, Capacities and Weight

Cruise Speed: 15 Kts. (17 MPH)

Cruise Speed RPM: 1950 Kts.

Max Speed: 20 Kts. (23 MPH)

Max Speed RPM: 2250 Kts.

Gross Tonnage: 75 Pounds

Water Capacity: 680 Gallons

Fuel Capacity: 4000 Gallons

Accommodations

Total Cabins: 4

Total Heads: 6

Crew Cabin: 2

Crew Heads: 1

Hull and Deck Information

Hull Material: Fiberglass

Hull Designer: Tom Fexas

Engine Information

Engines: 2

Manufacturer: Caterpillar

Model: 3412

Engine Type: Inboard

Fuel Type: Diesel

DETAILED INFORMATION

Price, condition and value

This yacht is beautiful. This yacht is going to sell, soon. It is very well cared for. The exterior of this boat has just been completely repainted in 2009. Then the hull was repainted in 2018. The interior is beautiful. New high-end curtains were added throughout the boat. The decks inside most of the boat have been cleaned and polished. New Wesmar CPS 1000 Gyro Stabilizers were installed in 2005. Then serviced in 2018. A new Wesmar bow thruster was installed in 2005. The systems and appliances TVs and electronics are much newer than the hull. Underwater lights were installed in 2010. The Air Conditioning has been upgraded. Anyone would be proud to cruise and entertain on "Sapphire". At this new price, It is the best value in the market, today.

Aft Deck and Salon

Coming up from either side of the Euro transom is a comfortable Aft Deck. This deck has new teak in 2018. The companionways forward and the foredeck have new teak. Electric winches make line handling easy. On the aft deck, there is seating and dining for large parties. The double doors open into the huge full beam salon. Wow, what a comfortable living space is provided by the salon. It is full width. The seating is elegant and very functional for a few or many guests. Newer 50" pop up LCD flatscreen TV. The window shades are high end and new. The galley is forward of the salon and open to all of your guests. The appliances are stainless steel current models. There is seating at the galley breakfast bar. There are stairs aft to Master number one. This room has a HUGE master bath and walk-in closet. The second master is on the main deck forward of the salon and pilothouse. There is a lot of natural light in this room. This stateroom also has a large bath. The pilothouse is forward of the galley. There is no space wasted on this area. It is compact and very functional. There are deck access doors port and starboard. Stairs forward go below to 2 VIP staterooms. These matching staterooms have ensuite heads and double beds. The decor is all Beautiful. The various woods give the interior a very rich appearance.

Engines

Total Power: 2x 1050 Walker Airseps 14.5 knots @ 1950 RPM 19.9 knots @ 2250 RPM 2 Onan 55 KW Generators

Accommodations

- Master Suite is below aft. It is full width and beautiful w walk-around queen, large flatscreen TV, Huge tiled head w Jacuzzi. n The decor is very beautiful.

- The second Master suite is on deck and forward of the pilothouse. It has great natural light, a King berth, large LG Flatscreen TV, office, walk-in closet, head with Jacuzzi and beautiful decor.
- Below the salon and galley are two VIP Suites with walkaround doubles, ensuite heads, and Large Flatscreen TVs.
- Forward and under the pilothouse is a separate crew area with a dinette, Flatscreen TV, galley, 2 cabins and a full head.
- American Cherry interior finish
- Carpets throughout with wood in galley, crews mess & pilothouse

Galley

- The galley is forward of the salon and aft of the pilothouse.
- The appliances are top of the line, Stainless Steel professional equipment.
- 4 burner stove and warming zone, electric glass top, Frigidaire
- twin ovens
- microwave
- sub zero large refrigerator
- general electric wine refrigerated cabinet in the salon
- Sanyo refrigerator on the aft deck
- ice makers in the galley
- built-in coffee maker

Electronics

- 5" Ritchie Compass
- Simrad AP22 Compass
- Garmin 3205 GPS
- LG TV & Mitsubishi VCR in Salon
- LG TV & Sony DVD in M.S. & VIP
- LG TV & Sony DVD in crew's mess area
- Yamaha Receiver, Sony DVD/CD & Monster Power unit in salon
- Dual AM/FM CD on Fly Bridge & aft deck

Tanks

Fuel: 4000 Fresh Water: 680

Exclusions

Owner's personal belongings.

Disclaimer

The Company offers the details of this vessel or yacht in good faith but cannot guarantee or warrant the accuracy of this information nor warrant the condition of the vessel. A buyer should instruct his representatives, agents, or his surveyors, to investigate such details as the buyer desires validated. This vessel or yacht is offered subject to prior sale, price change, or withdrawal without notice.

PHOTOS

Stern View



Aft Garage



Bridge Deck



Flybridge Console



Flybridge Aft View



Stainless Galley



Master Suite



Master Berth



Master Bath



Master Shower/Jacuzzi



Port Guest Stateroom



Port Guest Stateroom



Stbd Guest Stateroom



Pilothouse Seating



Pilothouse Console



Ondeck VIP Suite



VIP Head



VIP Jacuzzi Tub



Port Engine



Strb. Engine



Crew Salon



Crew Galley



Crew Bunks



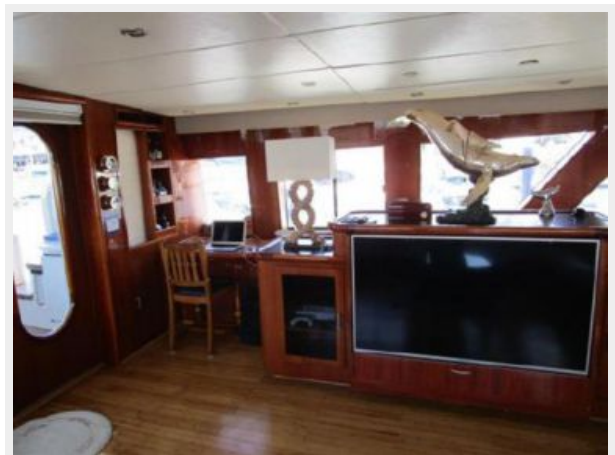
Crew w/head opposite



Captain's Quarters



Captain Berth





CONTACTS

Andrey Shestakov, leading yacht broker of the sales department of Shestakov Yacht Sales Inc. Shestakov Yacht Sales Inc., the official representative of the Miami/Fort Lauderdale FL headquarters.

Contact details

Email: **andrey@shestakovyachtsales.com**

Web: shestakovyachtsales.com/en/

Telephones

USA: **+1(954)274-4435**

Office hours

Monday – Saturday: **9:00 - 21:00 EDT**

Sunday: **closed**

Address



Harbour Towne Marina, 850 NE 3rd St,
STE 213, Dania, FL 33004