

## **DANCES WITH DOLPHINS — NORSEMAN YACHTS**



**Судостроитель:** NORSEMAN YACHTS

**Длина общая:** 40' 0" (12.19m)

**Год постройки:** 1993

**Модель:** Катамаран

**Цена:** ЦЕНА ЯХТЫ ПО ЗАПРОСУ

**Местонахождение:** United States

Купить **Dances with Dolphins — NORSEMAN YACHTS** а также выбрать подходящую вам яхту из нашего каталога яхт вам поможет опытный яхтенный брокер Андрей Шестаков. На сегодняшний день компания **Shestakov Yacht Sales Inc.** имеет большое количество яхт в собственном списке продаж, а также тесно сотрудничает со всеми крупными яхтенными производителями по всему миру. Для того чтобы купить яхту **Dances with Dolphins — NORSEMAN YACHTS** а также проконсультироваться по любому вопросу связанному с покупкой, продажей, чартером яхт позвоните по телефону **+7(918)465-66-44**.

# ОГЛАВЛЕНИЕ

ОГЛАВЛЕНИЕ	2
ХАРАКТЕРИСТИКИ	3
Обзор	3
Основная информация	3
Размеры	4
Размещение	4
Корпус и палуба	4
Информация о двигателе	4
ПОДРОБНОЕ ОПИСАНИЕ	5
Accommodations	5
Galley	5
Mechanical	6
Electronics & Navigation	6
Electrical System	7
Sails & Rigging	8
Deck Equipment	8
Hull & Construction	9
Disclaimer	10
Исключения	10
Отказ от ответственности	10
ФОТОГРАФИИ	11
КОНТАКТЫ	20
Контактная информация	20
Телефоны	20
Время работы	20
Адрес	20

# ХАРАКТЕРИСТИКИ

## Обзор

- Ready for your cruising adventures! Dances with Dolphins has enjoyed the care of the same owners for the last 18 years who have lived aboard and cruised her full time in the Bahamas, she has many features only this experience can provide.
- 4 cabin, 2 head layout with galley up and large salon area.
- She is well equipped and set up for long term self sufficiency for extended living "on the hook" including water maker, custom fiberglass hardtop topped with 6 solar panels total 1230 AH, 8kw diesel generator (2014), new alternator (2016), Invertor, 1700 AH of batteries, AC freezer, Heavy ground tackle and many redundant systems!
- Mechanically sound and very well maintained. 2 Volvo Penta 2030D (2001, 2002) engines with saildrives and 3 bladed bronze folding props. Excellent engine access. Complete with over abundant spares for virtually every system!
- Comprehensive electronics and entertainment systems new 2016 includes Chartplotter, Radar, Autopilot, VHF with AIS.
- Easy line handling to the cockpit, her sail compliment includes a large raked UK Mainsail, a Genoa, a storm jib and a spinnaker.
- Her shallow 3' 6" draft offers increased options for safe anchoring away from crowds and wider access to secluded spots - an ideal Bahamas boat!
- Beamy and spacious at 40 feet long and 25 feet wide, she offers lots of space for comfort and entertaining, as well as great stability and safety at anchor or under sail.
- The roomy cockpit is safe, comfortable and perfect for relaxing and entertaining with custom cushions and a custom hardtop for protection. Great visability for while sailing and docking. Plenty of room for family and friends!
- The large galley-up and comfortable salon has double sliding doors from the cockpit and offers a great traffic flow and easy conversation during meal times and entertaining. The salon dining and entertainment area can seat 6+ comfortably. Tall headroom throughout. Panoramic view from wrap around windows. Good ventilation with numerous opening hatches.
- Two queen cabins forward, and two double cabins aft. Two heads with sink, shower and electric toilets sits between the forward and aft cabins in each hull.
- 10 foot AB dinghy equipped with a new 20 HP Suzuki outboard takes you wherever you want to go.
- Recently cruised and ready to sail and liveaboard now!
- Deck and Hull needs painting, but not necessary for operation

## Основная информация

**Тип судна:** Катамаран

**Модельный год:** 1993

**Год постройки:** 1993

**Страна:** United States

---

## Размеры

---

Длина общая: 40' 0" (12.19m)

---

## Размещение

---

Всего кают: 4

---

## Корпус и палуба

---

Материал корпуса: Fiberglass

---

## Информация о двигателе

---

Производитель: Volvo Penta

---

# ПОДРОБНОЕ ОПИСАНИЕ

---

## Accommodations

---

- Large sliding glass entry doors from cockpit to salon
- Panoramic windows offer an excellent view, UV window shades
- Large U shaped salon settee with a folding cherrywood/beechwood table that seats 6+ comfortably for dining and entertaining
- Generous under table and seating storage
- 40" HD Flatscreen TV and DVD player
- Light Oak tone Vinyl Laminate floor covering
- Navigation station with desk, electric panel and charging station
- Galley up to port
- Ample headroom throughout
- Dual access steps to each hull
- 2 Private Queen cabins forward with hanging locker and 2 shelving lockers
- 2 Private Double cabins aft with three large lockers
- 2 spacious heads with sink, shower, cupboards, and electric toilets sits between the forward and aft cabins
- LED reading and courtesy lights in all cabins
- Excellent ventilation with large overhead Bomar hatches and screens
- Caframo 12V fans in all cabins
- 3 Dolphin carvings from Bali

## Galley

---

- The well laid out double sided galley up provides practical functionality with easy access to salon and cockpit and steps to port cabins
- Propane Stovetop, cabinets and freezer outboard, sinks, refrigerators, counter space forward facing and inboard
- (3) burner ENO stovetop uses LPG
- Propane solenoid shutoff, 25# Fiberglass propane tank
- 2 SS sinks and drying sink with separate drain
- New stainless steel single lever faucet
- Deep well insulated top loading Isotherm Freezer/Refrigerator
- Well insulated front opening bar cooler
- 7 cubic foot top loading AC deep freezer (occupies one hull access area)
- Daewood Microwave oven
- Zoroshi Breadmaker
- Cuisinart coffee maker
- NuWave Convection Oven
- Single Induction plate cooker
- Pots and pans

- 2 Isotherm Water Heaters (5 gallons each)
- PUR 160E Watermaker runs on 12 volt ( 6 gallons per hour)
- Good Ventilation from overhead hatch and exhaust fan in hatch
- Generous storage for pots & pans, food, spices and provisioning room with 6 large galley cupboards
- Additional storage that includes the dishes, silverware and glasses in salon, close to table

---

## Mechanical

---

- Better than average access to both engines, front and back
- Shows very well maintained Volvo Penta 2030D x2 engines - 29 hp diesel, Port new 2002, Stbd new 2001
- 120s Sail Drives (rebuilt 2014, seals 2018)
- 1" Engine raw water intake thru hulls thru strainer with Marlon shutoff (saildrive intakes still functional)
- 3 blade bronze flex folding props
- Volvo 70 amp alternators (new 2016)
- Dual Racor Primary Fuel Filters
- Full Instrument panels (new 2016) on helm
- Steering Gear Wheel, Cable & Bar
- Single Lever Cable Throttle Controls
- One - 107 Gallon SS Water Tank
- ShurFlo Pressure System PUR 160E water maker (rebuilt 2019) (6 gallons per hour)
- Charcoal drinking water filtration
- One aluminum diesel fuel tank with two compartments - 104 gallons
- Fuel Lines: USCG/ISO Type A1 & B1
- Fuel Fill Lines: USCG/ISO Type All
- Push button electric pumps for oil changes
- Oil change is one gallon
- Electric fuel pumps on each engine for self priming gravity fed engines
- Mass loaded vinyl insulation replaced foam for more room and cleaner engine areas
- Chafe protection on hoses
- Bright lights in engine compartment for easier maintenance

---

## Electronics & Navigation

---

### Updated Electronics and Entertainment Systems 2016

- Raymarine EV-200 Linear Pilot autopilot with P70 head (2016)
- Garmin GPSMap 7612xsv 12" chartplotter (2016)
- Garmin GPSmap 741xs 7" chartplotter with US East Coast and Bahamas maps (2016)
- Garmin GPS 19x NMEA 2000 antenna (2016)

- Garmin GMR 18 xHD 18" Dome Radar (2016)
- Raymarine I60 Tridata system with Depth and Speed (2016)
- Raymarine I60 Wind display (2016)
- Raymarines long wind ST60100 Transducer (2016)
- Depth sounders in both hulls
- Ritchie Navigator Compass
- Standard Horizon Matrix GX2200 VHF with AIS /GPS Marine VHF w/Polyplaner Remote Speaker
- Whip mounted antenna on mast
- Many redundant handheld devices
- Cellular booster and charger
- Entertainment system new in 2016 includes:
  - Fusion MS-AV750 Marine stereo
  - Two Polyplanner 6" speakers
  - Two Polyplanner 8" speakers
  - Samsung 40" 4K HD Smart TV
  - Sony sound bar
  - Samsung DVD/Blue Ray

## Electrical System

---

- 12 Volt DC with three plugs
- 110 Volt AC with plug in each cabin, 5 in galley and salon area and 1 in cockpit, all GFI
- Phasor Kubota 8.0 Kw generator ( new 2014) backend upgraded (2016)
- Lead sound insulation for generator hatch
- Electric fuel pump on generator
- Oil change pump on generator
- 6 Rolls Surrette L16 Deep cycle batteries S-605 (2016)
- 2 Interstate Group 31 batteries
- 4 205 watt poly solar panels
- 2 205 watt mono solar panels
- Morningstar 60 AMP MPPT solar controller
- Outback 80 AMP MPPT solar controller
- Xantrex MS2000 Inverter/charger(2000w)
- Xantrex System control panel
- Bluesea master cut off switches
- 2 Promariner galvanic isolators
- Shore cords and adapters for 30 and 50 amp
- Salon generator remote control panel/duplicate on engine
- Volvo 70 amp Alternators on engines ( new 2016)
- Wiring, control panels and thin walled PVC ducting for air conditioner (not in use for 10 years, no guarantee)

---

## Sails & Rigging

---

- Aluminum mast and boom with steps up to first spreader
- 7/8ths rigged sloop with a prebend and raked mast
- Fully battened UK dacron mainsail with 5 cars and three reefs
- 135 dacron Genoa with Facnor roller furling
- Asymmetrical ripstop spinnaker
- Storm jib
- Custom UK sail bag on mainsail with lazy jack system
- Stainless steel standing rigging (1×19) with swage and staylock fittings (2009)
- 3 stainless steel spreaders
- Dyneema running backstays
- Full width traveller for mainsail across back of cockpit
- Polyester line running rigging
- All sheets come to cockpit for handling
- Lewmar #40 and #44 ST two speed winch on mast
- 2 Lewmar #48 ST, two speed winches on roof at cockpit
- 2 Lewmar #48 ST, two speed winches on side decks of cockpit
- Bosun's Chair
- ATN mast climber

---

## Deck Equipment

---

- Custom designed/ Green Sunbrella upholstered cockpit seating with backrests for 6+ comfortably
- Custom fiberglass hardtop over entire cockpit for shade/rain protection
- Rain water collection system
- Hardtop offers Windows to manage sails and winch work
- Sun shades on aft and sides
- LED Lighting
- Helm station with good visibility for sailing and docking
- Access to all sheets with Lewmar winches from cockpit
- Lots of storage under seats
- Floor locker doubles as safety escape hatch
- Spacious deck and trampoline areas allow comfortable outdoor activities
- Non skid on deck
- SS Stanchions and Lifelines
- Railings on bows and sterns
- Large trampolines for sunning
- Bow seats
- SS swim ladder with great handles for getting out of the water
- Sugarscoop transoms with molded stairs
- Transom shower



- Sunscreens on windows
- Bright LED deck light for viewing anchor or generator at night
- (1) Delta 55 anchor
- (1) Fortress, FX-37 anchor
- (1) Fortress, FX23 anchor
- Dinghy anchor
- Lofrans Progress Electric Windlass w/Chain Gypsy
- 150' Stainless Steel Chain
- 10' AB 10VL RIB Dingy 2013
- Suzuki 20 hp outboard Model Number: DF-20 (NEW 2018)
- Stainless Steel davits with Block & Tackle lift
- Paddles, pump and repair kit
- Polyester anchor rode
- 4 Fenders
- Mooring lines of various lengths and strengths which have been used for hurricane tie
- Firehouse chafe protection on primary docking lines
- Compressed air and conch Horns
- Pole spears, fins, masks and snorkels
- 2 dive suits
- Solas B Kit Flares
- SOS Distress light C-1001
- (6) Adult Type II life vests
- (6) Adult Type III life vests
- (2) Adult Type V Compressed life vests
- (2) Horseshoe Buoy Life Rings
- 8" Bell fog signal
- (7) portable fire extinguishers
- LED Anchor, Tricolour, Steaming and Deck lights
- Lower Navigation lights
- Smoke alarm
- (2) Carbon Monoxide alarms

## Hull & Construction

---

- Alex Simonis design
- Full monocoque construction
- GRP exterior laminates with foam core
- Watertight bulkheads
- Foam core bulkhead bonded to hull with FRP
- Transom have molded steps in sugarscoop configuration
- Molded FRP keels
- Skeg hung rudders
- Custom Fiberglass Hardtop with forward overhang

- Cockpit painted 2009
- Hull and deck needs painting

## Disclaimer

---

The Company offers the details of this vessel in good faith but cannot guarantee or warrant the accuracy of this information nor warrant the condition of the vessel. A buyer should instruct his agents, or his surveyors, to investigate such details as the buyer desires validated. This vessel is offered subject to prior sale, price change, or withdrawal without notice.

## Исключения

---

При продаже яхты исключаются личные вещи владельца.

## Отказ от ответственности

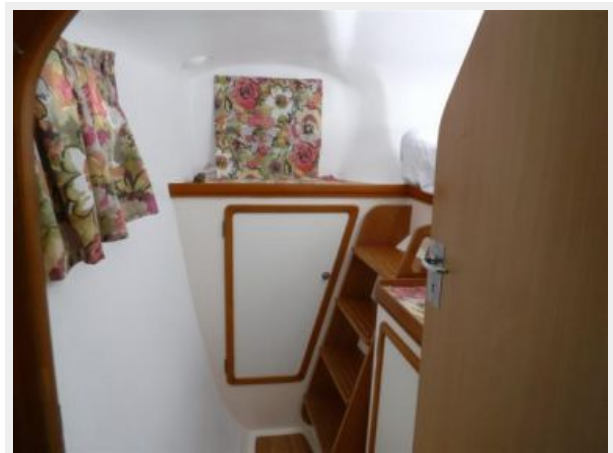
---

Компания предоставляет описание судна или яхты добросовестно, но не может гарантировать точность этой информации, а также не ручается за техническое состояние. Покупатель должен проинструктировать своих агентов или оценщиков исследовать представленную информацию более подробно, по собственному желанию. Продажа судна или яхты, изменение цены или снятие с продажи будет происходить без предварительного уведомления.

# ФОТОГРАФИИ

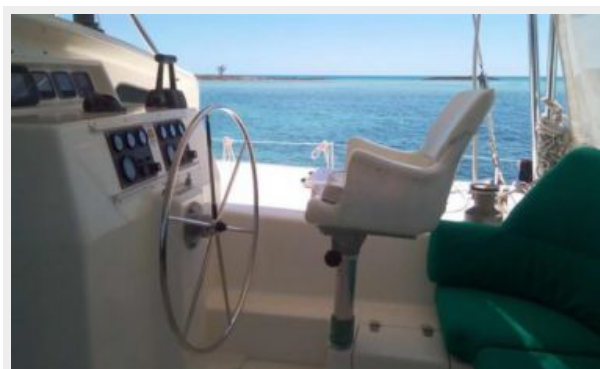






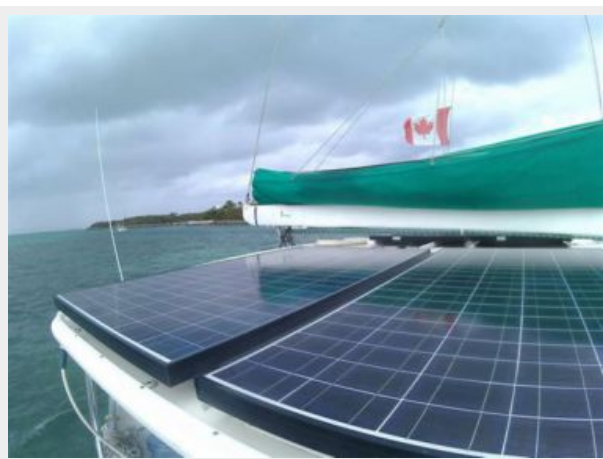














# КОНТАКТЫ

---

Андрей Шестаков (Andrey Shestakov) – ведущий яхтенный брокер отдела продаж яхт и судов компании Shestakov Yacht Sales Inc. Официальный представитель Shestakov Yacht Sales Inc. для русскоговорящих клиентов в центральном офисе компании в Майами/Форт Лодердейл/Флорида/США.

## Контактная информация

---

Email: [andrey@shestakovyachtsales.com](mailto:andrey@shestakovyachtsales.com)

Web: [shestakovyachtsales.com](http://shestakovyachtsales.com)

## Телефоны

---

Краснодарский край: **+7(918)465-66-44**

США, Майами, Флорида: **+1(954)274-4435**

## Время работы

---

Понедельник – Суббота: **9:00 - 21:00**  
EDT

Воскресенье: **Закрито**

## Адрес

---



Harbour Towne Marina, 850 NE 3rd St,  
STE 213, Dania, FL 33004