

HORIZON FD87-211 — HORIZON



Builder: HORIZON

LOA: 90' 1" (27.46m)

Year Built: 2019

Beam: 23' 3" (7.09m)

Model: Motor Yacht

Min Draft: 5' 7" (1.70m)

Price: PRICE ON APPLICATION

Location: United States

Our experienced yacht broker, Andrey Shestakov, will help you choose and buy a yacht that best suits your needs **Horizon FD87-211 — HORIZON** from our catalogue. Presently, at Shestakov Yacht Sales Inc., we have a wide variety of yachts available on our sale's list. We also work in close contact with all the big yacht manufacturers from all over the world.

If you would like to buy a yacht **Horizon FD87-211 — HORIZON** or would like help answering any questions concerning purchasing, selling or chartering a yacht, please call **+1(954)274-4435**

TABLE OF CONTENTS

TABLE OF CONTENTS	2
SPECIFICATIONS	4
Overview	4
Basic Information	4
Dimensions	4
Speed, Capacities and Weight	4
Accommodations	5
Hull and Deck Information	5
Engine Information	5
DETAILED INFORMATION	6
Quick Specs	6
Hull & Structure	6
Forward and Aft Decks	7
Beach club	8
Skylounge & Boat Deck	8
Engine & Propulsion Details	9
Mechanical Systems	10
Electrical Systems	12
Interior Decor & Equipment	12
Salon	13
Galley	13
Master Stateroom	14
FWD VIP Queen Stateroom	14
Queen Guest Staterooms (2)	14
Twin Guest Stateroom	15
Crew Quarters	15
Electronics	15
Pilothouse Navigation	16

Exclusions	16
Disclaimer	16
PHOTOS	17
CONTACTS	20
Contact details	20
Telephones	20
Office hours	20
Address	20

SPECIFICATIONS

Overview

Enclosed skylounge design w/ dayhead

On-deck Master stateroom + four guest cabins below, all ensuite

Two private crew quarters aft

Staircase to foredeck from stbd main deck

Main salon + formal dining

Spacious galley w/ privacy screen & doors

American Oak for main wood w/ Walnut accents

Beach club w/ Hi-Lo swim platform & hydraulic door

Large bow seating area + sun pads

Boat deck w/ bar + seating

Basic Information

Category: Motor Yacht

Model Year: 2020

Year Built: 2019

Country: United States

Dimensions

LOA: 90' 1" (27.46m)

LWL: 77' 10" (23.72m)

Beam: 23' 3" (7.09m)

Min Draft: 5' 7" (1.70m)

Speed, Capacities and Weight

Water Capacity: 400 Gallons

Fuel Capacity: 3480 Gallons

Accommodations

Total Cabins: 5

Sleeps: 10

Total Heads: 7

Crew Cabin: 2

Crew Berths: 3

Crew Sleeps: 4

Crew Heads: 1

Hull and Deck Information

Hull Material: Fiberglass

Engine Information

Engines: 2

Manufacturer: MTU

DETAILED INFORMATION

Quick Specs

Enclosed skylounge design w/ dayhead

On-deck Master stateroom + four guest cabins below, all ensuite

Two private crew quarters aft

Staircase to foredeck from stbd main deck

Main salon + formal dining

Spacious galley w/ privacy screen & doors

American Oak for main wood w/ Wenge accents

Beach club w/ Hi-Lo swim platform & hydraulic door

Large bow seating area + sun pads

Boat deck w/ bar + seating

Headhunter sanitary treatment system

Hydraulic steelhead davit SM2000

Sea Recovery water maker 1400 gal/day

ABT zero speed stabilizers

ABT hydraulic bow/stern thruster

Maretron control & monitoring system

100A shore power system

Reverso fuel polishing system

Hydraulic Hi/Lo swim platform

Hull & Structure

ABS/DNV type approved fiber/resin & sandwich core material applied

White gel coat finish

One-piece hull cored lamination w/ deep skeg and longitudinal girders

Hull, deck & superstructure built w/ 3D VARTM infusion for improved strength & less weight

High density foam cored hull bottom

High density foam cored hull sides, decks and superstructure

Stringers with high density foam coring, bonded during layup for increased structural rigidity and strength

Interior structural components all properly bonded to hull

Strong collision bulkhead for extra safety

International anti-fouling bottom paint w/ anti-osmosis treatment

PropSpeed/PropGold metal paint for underwater appendages

Tunnels for reduced draft

HPPB High performance Piercing Bow

Forward and Aft Decks

Non-skid fwd deck and side decks

(2) High tensile 1/2" 300ft anchor chains

(2) Anchor chain counters

(2) S/S 100kg anchors

(2) Maxwell VWC3500 windlass

Freshwater/seawater anchor chain washdown

Heavy-duty S/S 1 3/4" handrail w/ 1-1/2" stanchions & steel cable

(2) FRP aft bulwark side boarding doors

Frameless windows, tinted Low-E tempered glass for windshield

Frameless windows, tinted tempered laminated glass for side windows

Portuguese bridge w/ U-shaped seating & sun pads per layout

Cabinet at fwd settee w/ fridge w/ freezer & icemaker

Sunshades at foredeck (per layout)

(2) Integrated stairs from aft deck to upper deck

Wing doors to port & stbd side decks

Teak aft deck, swim platform & teak steps

Custom aft deck seating + table arrangement, per layout

S/S sliding door for main salon, self-locking

(2) Aft deck corner fairleads

(2) Maxwell VC2500 capstan

Custom mini bar under aft deck stairs w/ sink and fridge

Aft deck electric folding TV cabinet w/ Samsung 43" LED TV

Fusion Marine Stereo w/ speakers

Marquipt 7-step side boarding sea stairs; storage per layout

Pre-wire for boat name on stern, port & stbd sides

Beach club

Hydraulic door with pantograph door in the middle

Hydraulic Hi/Lo swim platform w/ 2000lb capacity & removable rails

Sofa seat w/ table

Bar with sink & fridge/freezer

Skylounge & Boat Deck

Skylounge design w/ dinette, dayhead, desk, (3) STIDD helm chairs at helm & Samsung 50" Hi/Lo TV

Skylounge electric Roman blinds

Custom designed helm w/ full set of engine gauges, monitoring system for important equipment, fuel & water gauges, Ritchie Supersport magnetic compass, surveillance camera system (PTZ cameras for aft deck & engine room), bilge pump panel & navigational lights

Skylounge home theater system

Samsung Blu-ray player + Apple TV

Non-skid boat deck

Removable S/S rails around boat deck

Oversize drains w/ strainer on each corner w/ internal overboard drains

L-shaped seating w/ swivel table on boat deck

Two level bar w/ S/S bar stools, sink, fridge & icemaker

Sunshade for boat deck area, per layout

Hi/Lo 24" propane BBQ in FRP cabinet

(2) Hatches on hardtop

(2) Tokai Sanshin search lights

Hydraulic steelhead davit SM2000

(4) Flood lights for mast & boat deck

Fusion Marine stereo system w/ speakers

MTU wired remote plug in on boat deck

Engine & Propulsion Details

Twin MTU 10V2000M96L 1600HP engines

S/S shafts Aqualoy 22HS

High performance S-class 5 Blade propellers

Main & intermediate bronze struts w/ backing plates

Shaft & rudder packing glands w/ Tides Marine seals

ABT Zero Speed Stabilizer (370/16X)

Hydraulic ABT bow & stern thrusters, 45HP each

Delta-T engine room ventilation system

S/S Rudder with Zinc plates

S/S emergency tiller in rudder cabin

Underwater exhaust system for engines w/ bypass mufflers

Teleflex Seastar Steering System

Anti-noise treatment to exhaust system

Bennett heavy-duty trim tabs w/ indicators

Engine mounts on S/S engine bed bonded to FRP hull girder

Clean design w/ lightweight Tubus Bauer honeycomb floor

S/S overhead grab rail on each side of engine

Engine room LED ceiling lights & LED lights under engines

Engine alarm system for low oil pressure & high water temp

Bauer dive compressor

Swan air compressor

Central vacuum cleaner

Air conditioning in ER

Mechanical Systems

Chilled water Marine Air air conditioning

Backup A/C circulation pump (ship loose)

Backup A/C sea water cooling pump (ship loose)

Fuel tanks w/ sight & electrical gauges

Fuel filters/water separator supplied by MTU, each engine

Dual Racor 75/500-MA fuel filters, one on each generator

(2) Electric fuel transfer pumps

Reverso FPS210 fuel polishing system

Oil change pump system for engines, gears, & generators

400 Gallon FRP water tank

Sea Recovery AQM water maker, 1400 gal/day

High-volume Headhunter AC fresh water pressure pump & back up DC pump

Fresh water charcoal filters in main supply pipe & galley

Fresh water hose for filling engine and generator expansion tank

ER strainer plumbing w/ cross-over line and fresh water flush (requires monitoring & maintenance by owner)

Marine grade lines for fresh water system

(2) 30 gallon water heaters

Hot water circulation pump

Headhunter sanitary waste treatment system

200 gallon holding tank w/ macerator pump

100 gallon sump tank

Sump pumps system for grey water

Electric level indicators for holding tank & sump tank

(5) Electric rule bilge pumps

(2) Manual bilge pumps in ER & forward staterooms

High water level bilge alarm

Bilge exhaust ventilation fans

Seafire fixed fire extinguisher (FM200) for ER w/ remote control

Fire insulation in engine room

Fire resistant treatment for pipe

Auto shutdown system

Automatic fire damper system

(4) Portable fire extinguishers in recessed lockers

Integrated fire alarm in skylounge w/ heat & smoke detectors in each cabin

Electrical Systems

LED lighting system throughout interior & exterior

Maretron monitoring & control system

(2) Onan 29kW/60Hz generators w/ sound shields

100A shore power system w/ ISO Boost transformers 100A (x2) & (x2) 100A Cable master

Vapor proof battery switch

(4) 244AH AGM start batteries for engines/gens w/ (2) battery chargers

(8) 210Ah Lifeline AGM batteries for boat's DC 24V service power w/ (2) combined inverter/chargers

(2) 210Ah Lifeline emergency batteries w/ independent battery charger

Main electric panel includes AC & DC circuit breakers

Emergency power package & lighting system

AC volt receptacles located throughout including engine room

GFI protection for all AC outlets in heads, galley & ER

Electrolysis bonding system

Cathodic protection w/ zinc anodes for shafts, struts, etc.

(8) Underwater lights

(2) Stern docking lights

Interior Decor & Equipment

Guest accommodations include on-deck master stateroom, fwd VIP cabin, port & stbd queen cabins & twin guest room, all ensuite

Crew area has 2 staterooms, full head, crew mess, w/ access from aft deck and transom

70% Gloss American Oak for main wood w/ satin Walnut accents (toe kick & decorative accents)

Fabrica carpet for all guest staterooms

Walnut floor for main salon, dining, galley, skylounge and internal stairs

Cambria quartz countertops & flooring for all heads

Stacked GE washer/dryer in guest & crew companionway (total of 2)

Full set of Horizon logo galley tableware for 10 including dish holders, pots/pans, dishes, plates, cutlery, glasses, etc.

Salon

Dayhead in main salon aft

Leather L-shaped sofa, custom coffee table & chair per layout

Custom area rug

Free-standing custom cabinet to stbd

Custom convertible dining table w/ ten chairs, per layout

Electric single treatment curtains

Hinged doors to port & stbd of main salon

55" QLED TV

Home theater system

Samsung Blu-ray player

Apple TV

Galley

Cambria quartz countertops & floor

Full height Sub Zero fridge + full-height freezer per GA

Cooktop, oven & range

Dishwasher & trash compactor

S/S sink w/ disposal

U-line wine cooler

Full height pantry

Hi/Lo screen & privacy doors to enclose galley

Opening porthole

Storage arrangement per layout

Master Stateroom

50" QLED TV

King bed w/ storage drawers & nightstands

Stbd side love seat; vanity/desk to stbd

Ensuite head w/ dual sinks, shower & . w/ opening porthole

Walk-in closet + 2 hanging lockers (port and stbd)

Electric roman shades

Opening porthole on stbd side

Skylight w/ electric blind

Home theater system

Samsung Blu-ray player + Apple TV

FWD VIP Queen Stateroom

Queen bed w/ storage drawers & nightstands

Large hanging locker on stbd side

Ensuite head w/ sink, shower & toilet

43" LED TV

Fusion stereo system w/ speakers

Queen Guest Staterooms (2)

Mirrored staterooms w/ Queen bed & w/ storage drawers & nightstand

Large hanging lockers

Ensuite head w/ sink, shower & toilet

43" LED TV

Fusion stereo system w/ speakers

Twin Guest Stateroom

Twin beds, one fixed + one sliding

Hanging locker

Ensuite head w/ sink, shower & toilet

32" LED TV

Fusion stereo system w/ speakers

Crew Quarters

Captain's cabin + single bunk cabin w/ pullman

Head w/ sink, shower & toilet

Crew mess w/ fridge & freezer drawer w/ icemaker

Dinette w/ table

Wolf convection microwave

Kenyon cooktop

32" Samsung LED TV

Fusion Marine stereo system w/ speakers in beach club/mess, captain's cabin & bunk cabin

Stacked washer/dryer

Electronics

TV antenna on top of radar arch

SAT TV KVH TracVision HD7 + KVH TracPhone V7-IP Empty Dome (SAT phone pre-wire only)

Wave wifi with Pepwave 4G + wifi booster

(5) Panasonic PBX Telephones with intercom feature Exterior connector for shore phone and cable TV

Pilothouse Navigation

Full Garmin navigational system includes:

Garmin GMR 1226 72" 12kW 72nm open array radar system & GMR Fantom 4 solid-state open array and pedestal (4) Garmin GPSMAP 8617 24" multifunction display

(2) Garmin GPS 19x NMEA

MBB300C for inputting Maretron info to Garmin display

Garmin Grid 20 remote input device

(2) Garmin VHF 210

Garmin AIS 600

Garmin Autopilot control unit

Garmin instrument display w/ Wind transducer; depth, speed & temp transducer

Garmin GSD 25 + Airmar fishfinder

GXM Satellite weather antenna

Exclusions

Owner's personal belongings.

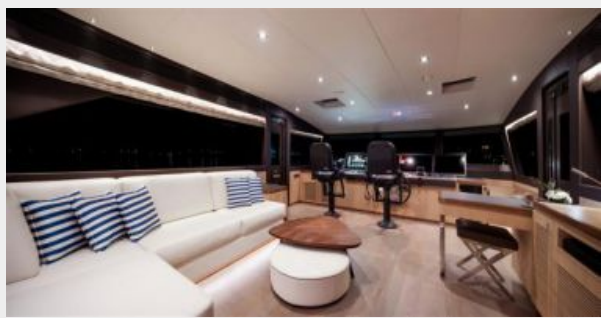
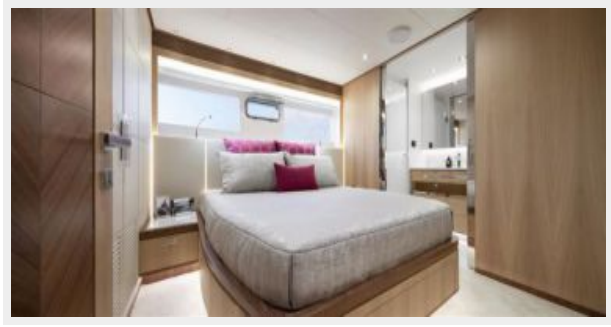
Disclaimer

The Company offers the details of this vessel or yacht in good faith but cannot guarantee or warrant the accuracy of this information nor warrant the condition of the vessel. A buyer should instruct his representatives, agents, or his surveyors, to investigate such details as the buyer desires validated. This vessel or yacht is offered subject to prior sale, price change, or withdrawal without notice.

PHOTOS







CONTACTS

Andrey Shestakov, leading yacht broker of the sales department of Shestakov Yacht Sales Inc. Shestakov Yacht Sales Inc., the official representative of the Miami/Fort Lauderdale FL headquarters.

Contact details

Email:
andrey@shestakovyachtsales.com

Web: shestakovyachtsales.com/en/

Telephones

USA: **+1(954)274-4435**

Office hours

Monday – Saturday: **9:00 - 21:00 EDT**

Sunday: **closed**

Address



Harbour Towne Marina, 850 NE 3rd St,
STE 213, Dania, FL 33004