

ENNUI GO — LAZZARA



Судостроитель: LAZZARA

Год постройки: 2001

Модель: Моторная яхта

Цена: **ЦЕНА ЯХТЫ ПО ЗАПРОСУ**

Местонахождение: United States

Длина общая: 80' 0" (24.38m)

Ширина: 20' 1" (6.12m)

Мин. осадка: 5' 1" (1.55m)

Макс. осадка: 5' 4" (1.63m)

Крейс. скорость: 23 Kts. (26 MPH)

Макс. скорость: 27 Kts. (31 MPH)

Купить ENNUI GO — LAZZARA а также выбрать подходящую вам яхту из нашего каталога яхт вам поможет опытный яхтенный брокер Андрей Шестаков. На сегодняшний день компания Shestakov Yacht Sales Inc. имеет большое количество яхт в собственном списке продаж, а также тесно сотрудничает со всеми крупными яхтенными производителями по всему миру.

Для того чтобы купить яхту ENNUI GO — LAZZARA а также проконсультироваться по любому вопросу связанному с покупкой, продажей, чартером яхт позвоните по телефону **+7(918)465-66-44**.

ОГЛАВЛЕНИЕ

ОГЛАВЛЕНИЕ	2
ХАРАКТЕРИСТИКИ	8
Основная информация	8
Размеры	8
Скорость, вместимость и масса	8
Размещение	8
Корпус и палуба	9
Информация о двигателе	9
ПОДРОБНОЕ ОПИСАНИЕ	10
Walkthrough	10
Foredeck	10
Side Decks	10
Aft Deck	11
Cockpit / Swim Platform	11
Pilothouse	12
Pilothouse Electronics	12
Skylounge / Pilothouse	13
Skylounge / Pilothouse Cabin Top	13
Skylounge Aft Deck / Boat Deck	13
Galley	14
On Deck Day Head	15
Main Salon	15
Formal Dining	16
Guest Foyer / Owners Stateroom	16
Master Stateroom	16
Master Stateroom Ensuite Head	16
Port Guest VIP Stateroom	17
Port Guest VIP Stateroom Ensuite Head	17

Starboard Twin Berth Guest Stateroom	18
Starboard Twin Berth Stateroom Ensuite Head	18
Captain's / Crew Quarters / Foyer Located Forward	19
Captain's Cabin	19
Captain's Head Ensuite	20
Crew Cabin Forepeak	20
Crew Forward Bunk Cabin / Ensuite Head	20
Mechanical	21
Gears	21
Generators	21
Props	21
Electrical	22
Oil Change System	22
Watermaker	22
Freshwater System	22
Bow Thruster	22
Windlass	23
Fuel System	23
EPIRB	23
SAT Phone	23
Air Draft	23
Life Raft	23
Davit	23
Air Intake Blowers	24
Ladders	24
Covers	24
Engine Room	24
Carpet Runners	24
Fire System	25

Air Conditioning System	25
Holding Tank / Head System	25
Emergency Bilge Pump	25
Head Systems	25
HD / DVH7	25
Wave Runners	26
Tender	26
Brokers Comments	26
Исключения	27
Отказ от ответственности	27
ФОТОГРАФИИ	28
Foredeck / Sunpad	28
Foredeck	28
Skylounge Aft Deck	28
Skylounge Aft Deck / Tender	28
Tender	28
Skylounge Aft Deck	28
Aft Deck	29
Aft Deck	29
Aft Deck	29
Aft Deck / Starboard Control Station	29
Skylounge Helm	29
Helm	29
Skylounge	30
Skylounge	30
Skylounge	30
Skylounge	30
Skylounge	30
Skylounge	30

Grand Main Salon	31
Forward View Grand Salon	31
Main Salon Formal Dining	31
Grand Main Salon	31
Forward View Grand Salon	31
Grand Main Salon	31
Hi / Lo TV Cabinet	32
Main Salon 40" HD Pop Up TV	32
On Deck Day Head	32
On Deck Day Head	32
Country Kitchen Style Galley	32
Galley	32
Country Kitchen Style Galley	33
Galley	33
Galley	33
Galley	33
Galley	33
Owner / Guest Quarter's Staircase	33
Owner / Guest Stateroom's Foyer	34
Master Stateroom	34
Master Stateroom	34
Master Stateroom	34
Master Stateroom	34
Master Stateroom Desk / Vanity	34
Master Stateroom Desk / Vanity	35
Master Stateroom Ensuite Head	35
Master Stateroom Ensuite Head	35
Master Stateroom Jacuzzi Tub / Shower	35
Master Stateroom Head	35

Port Guest VIP Stateroom	35
Port Guest VIP Stateroom	36
Port Guest VIP Stateroom	36
Port VIP Guest Head	36
Port Guest VIP Head	36
Port Guest VIP Shower	36
Starboard Guest Twin Berth Stateroom	36
Starboard Guest Twin Berth Stateroom	37
Starboard Twin Berth Guest Stateroom	37
Starboard Ensuite Guest Head	37
Starboard Ensuite Guest Head	37
Forward Stairwell to Crew Quarter's	37
Forward Captain's Office	37
Crew Washer / Dryer	38
Captain's Cabin	38
Captain's Cabin	38
Forward Captains Cabin	38
Forward Port Captain Ensuite Head	38
Forward Crew Cabin	38
Forward Crew Cabin	39
Forward Crew Cabin Ensuite Head	39
Forward Crew Cabin Ensuite Head	39
Rear Full Beam Engine Room	39
Engine Room	39
Stern Wave Runner Garages	39
Stern Profile	40
Bow Profile	40
Layout Arrangements	40
Side Profile	40

КОНТАКТЫ	41
-----	-----
Контактная информация	41
-----	-----
Телефоны	41
-----	-----
Время работы	41
-----	-----
Адрес	41
-----	-----

ХАРАКТЕРИСТИКИ

Основная информация

Тип судна: Моторная яхта

Подкатегория: Sky Lounge

Модельный год: 2002

Год постройки: 2001

Страна: United States

Верх: Hardtop

Размеры

Длина общая: 80' 0" (24.38m)

Ширина: 20' 1" (6.12m)

Мин. осадка: 5' 1" (1.55m)

Макс. осадка: 5' 4" (1.63m)

Скорость, вместимость и масса

Крейс. скорость: 23 Kts. (26 MPH)

Крейсерская скорость поворота: 2000 Kts.

Макс. скорость: 27 Kts. (31 MPH)

Макс. скорость поворота: 2400 Kts.

Чистый вес: 62 Pounds

Вместимость воды: 400 Gallons

Вместимость сточного бака: 200 Gallons Объем топливного бака: 2000 Gallons

Размещение

Всего кают: 3

Спальные места: 6

Всего ком. состава: 6

Каюта капитана: Да

Каюты экипажа: 2

Койки экипажа: 4

Корпус и палуба

Материал корпуса: Composite Fiberglass **Материал палубы:** Teak and Fiberglass

Комплектация корпуса: Modified V-Hull **Дизайнер корпуса:** Dick Lazzara

Дизайнер экстерьера: Dick Lazzara **Дизайнер интерьера:** Lazzara Team

Информация о двигателе

Двигатели: 2

Производитель: MTU

Модель: 12V183TE94

Тип двигателя: Inboard

Тип топлива: Diesel

ПОДРОБНОЕ ОПИСАНИЕ

Walkthrough

Boarding from port or starboard boarding gates to comfortable Aft Deck with built in Settee, dining table for (6) and 3 deck chairs, port stairwell to fishing cockpit / tender boarding platform, port & starboard wave runner garages, access to rear full beam Engine Room. Access to full beam Main Salon through glass sliding doors forward of Main Salon formal dining table for six. Forward bulkhead with china and crystal cabinet. To starboard of Main Salon circular stairwell to owners/guest quarters. Forward of Main Salon on deck Day Head to starboard. Country kitchen style Galley with deck access sliding door. Access to foredeck which features a large Sun Pad with storage below. Forward and down from on deck Galley featuring Captain's Office with desk, Crew washer and dryer, Captain's Cabin with Ensuite Head and stall shower, forward Crew Cabin with upper and lower Berths, Ensuite Head with stall shower. Owner / Guest Quarters accessed from stbd. forward Main Salon, foyer with built in guest washer and dryer. Full beam Master Stateroom with centerline king berth, large walk-in closet, Ensuite Head with jacuzzi tub. Forward port VIP Guest Stateroom with walk around queen berth. Starboard custom twin berth stateroom each with Ensuite Heads.

Enclosed Flybridge / Skylounge accessed from circular stairwell in Galley. Forward Helm with Captain's Seat, and built in Settee with table to port.

Aft through glass sliding doors to Skylounge Aft Deck and tender boat deck.

Foredeck

- Raised bulwarks with 1 ½ stainless rail
- Painted non-skid deck
- Freshwater wash down / sea water wash down
- Deck courtesy lights
- Port & stbd. 17" stainless steel cleats w/chocks
- Crew Cabin escape / ventilation hatch 22"
- Burgee staff 22" stainless steel
- Anchor stainless steel plow style 80lb
- Anchor chute 3/8" with swivel shackle 3/8" x 200' chain
- Windlass / Maxwell 4000 vertical capstan w/wildcat 24v / **Replaced 7-19-19**
- Sun pad w/cushions and storage below
- Anchor windless with foot switches and covers

Side Decks

- Starboard side foredeck sliding access door

- Spring cleats 12" midship + ¾ position
- Cabin overhang with courtesy downlights
- Stbd. waste + water fill
- Port water fill

Aft Deck

- **Headroom 6'8"**
- **Length 9'**
- Overhang past rear bench seat
- (6) Overhead courtesy lights
- (2) 2 ¾" stainless steel support post
- Overhead CCTV camera for towing tender
- (2) 6" Flush overhead stereo speakers
- Teak deck
- Port & stbd. swing in boarding gates
- Port & stbd. 17" stainless steel cleats
- Port & stbd. fairleads with rollers
- Custom trend marine curved Salon access doors
- (6) Step access ladder to boat deck with teak treads
- Starboard side Aft Deck control station
- Electronic clutch / throttle controls with cover
- Bow thruster control / side power 24v variable 20 HP
- Stbd. side fuel tank deck fill 3"
- Cable TV / phone inlet port & stbd. (Hubbell)
- Portside dock side water inlet
- Freshwater wash down
- Built in Settee with cushions and cover
- Dining table Corian with cover and stainless steel bases
- Dining table 7' L x 3' W x 29" H
- (3) Chairs with cushions and covers
- Port side stair well to cockpit (5) step with teak treads
- Stairwell powder coated grab rail
- (7) step Sea Stair stows under Aft Deck table

Cockpit / Swim Platform

- **5'10" length**
- Teak decking
- Raised bulwarks with stainless steel staple rails
- (2) 6" pop up cleats
- (4) Flush rod holders (Lee)

- Freshwater hot & cold shower recessed cabinet with door
- 90' 100 AMP Cable Master / Single phase 208v
- Port & stbd. wave runner garages / doors on hydraulic lifts
- Engine Room door watertight with viewing port light with keyed lock

Pilothouse

- **Headroom 6'7"**
- Forward of Skylounge
- Access from forward starboard Main Salon
- Stairwell (8) step with varnished non-skid steps
- Stairwell with polished stainless steel banister
- Pilothouse sole teak and holly high gloss finish
- Electronics console with custom non-reflection pad / Black
- Safety rail / gate at stairwell
- Windshield 3/8" glass laminated and chemically strengthened
- Black textiline windshield cover
- Windshield wipers (3) x 31" blades with washers / variable speed
- Helm seat with polished stainless steel hi-lo base with footrest
- Helm seat with adjustable backrest and armrests
- Helm seat with fore and aft adjustable slide
- Access to doghouse under Helm
- Port U-shaped built-in Settee with cushions and storage below
- Settee table high gloss African Cherry with bullnose
- Settee table with polished stainless steel base
- Overhead Helm night vision lights (2) Red
- Overhead VHF flush mounted speaker

Pilothouse Electronics

- (3) 15" Display monitor screens
- Navigation charts / Nobeltec / upgraded
- Garmin GPS Map 7608 with 8" display screen
- (3) 31" Windshield wipers with washers, dual speed
- CCTV Display screen 12" / (2) cameras / (1) Engine Room
- (1) Aft Deck color pan + zoom
- Ships Monitor System / ISIS with 15" display monitor
- Autopilot / Robertson AP20 with rudder indicator
- Compass / KVH Electronic
- Bow thruster control / Side-Power 24v
- Radar / Furuno 72-mile color with 4" open array antenna
- Depth finder / B + G HS2000 digital

- Color Bottom D.F. with graph / Furuno FCV-582L
- Stabilizer control pad / TRAC
- Electronic clutch / throttles controls with synchronizer MTU
- VHF with remote overhead speaker & handset / Standard Horizon
- Remote water maker control / Reverse Osmosis
- Searchlight / electric remote / Jabsco Marine

Skyounge / Pilothouse

- **Headroom 6'7"**
- **Custom layout**
- **Walk behind bar relocated to Main Salon**
- Overhead with Halogen down lights on dimmers
- Curved custom dual sliding doors to Skyounge Aft Deck
- Digital air Cond. control
- Carpeted flooring with Sunbrella carpet runner
- Starboard "L" shaped convertible sofa
- Footrest / ottoman upholstered with storage
- Port swivel barrel chair
- TV built-in 40" Samsung HD
- DSS Receiver (Direct TV)
- Blu-ray 3D disc player (Panasonic)
- Portside refrigerator with icemaker (Uline)
- Bump outs with storage cabinets below
- Overhead recessed deco ceiling with Halogen lighting
- Side windows tinted with privacy shades and valances
- Joinery high gloss African Cherrywood

Skyounge / Pilothouse Cabin Top

- Painted non-skid deck
- (3) Step fold down access aluminum ladder
- TV antenna / analog, digital
- Horns / Dual trumpet Buell Air Horns
- Cell phone antenna
- SAT TV Dome / KVH TRAC 7
- Radar antenna 4' open array
- Hailers (2) fore and aft facing speakers
- Searchlight / Jabsco electric remote

Skyounge Aft Deck / Boat Deck

- **8' length**
- Teak decking
- 3' Overhang at curved sliding doors
- (2) 6" stereo speakers overhead in overhang
- (3) Overhead courtesy lights
- (2) Halogen boat deck work lights
- Portside concealed tender davit
- Built-in Settee with cushions, cover, storage below
- Access hatch from Aft Deck 24" x 24"
- 110v outlet with GFI & waterproof cover
- Freshwater wash down
- Port storage locker
- Stbd. storage locker with small 110v
- Cocktail / dining table Corian 5' L x 30" W x 28" H
- Table with stainless steel support bases (2)
- (2) Chairs
- Concealed life raft compartment / stbd. Bulwarks
- EPIRB / expires 7/2022

Galley

- **Headroom 6'6"**
- **Country Kitchen style**
- Overhead w/ Halogen down lights on dimmers
- Granite counter tops
- Large forward viewing windows
- Overhead air cond. ducts with digital thermostat
- Overhead 8" flush mounted stereo speakers
- Starboard side Crew / foredeck sliding access door with key lock
- Ample over & under counter storage
- Island with double stainless steel sink and storage below
- Faucet single lever with pull out sprayer
- Insta Hot spigot
- TV / 18" Insignia HD remote control
- Dinette "U" shape (6) person with Granite dining table
- Refrigerator / double door with water & ice dispenser, stainless steel (KitchenAid)
- Stove cook-top (5) burner (KitchenAid)
- Oven stainless steel (KitchenAid)
- Microwave convection stainless steel / GE Profile
- Trash compactor stainless steel (KitchenAid)
- Freezer drawers (2) stainless steel (Sub-zero)
- Galley sole bamboo planked flooring

On Deck Day Head

- **Headroom 6'7"**
- **Located just off Galley to starboard**
- Overhead with Halogen lighting on dimmer switch
- Window with privacy shade
- Joinery satin finished African Cherrywood
- Wall mounted mirror
- Medicine cabinet
- Exhaust fan 12v
- Marble countertop with sink
- Marble flooring
- Freshwater vacuum style Head
- Aquabrace chrome & brass faucet, soap dish, hand towel holder
- Privacy door with lock

Main Salon

- **Headroom 6'5"**
- Full Beam Grand Salon
- Entrance through glass curved sliding doors from Aft Deck
- Carpeted flooring with Sunbrella carpet runner
- Port & stbd. large eye level tinted windows with Hunter Douglas Blinds
- Upholstered valances
- African Cherrywood fluted mullion's
- Overhead with Halogen down lighting on dimmers
- Deco ceiling light with Halogen lights on dimmers
- Portside "L" shaped sofa with storage below
- Sofa end table with lamp
- Swivel barrel chair
- Glass top oval coffee / cocktail table
- Bump out cabinet with storage cabinets
- Starboard stand behind bar with Granite countertop
- Salon bar with icemaker / marble floors / liquor and glassware storage below
- TV pop up 40" Samsung HD
- DSS Receiver (Direct TV)
- Blu-ray 3D disc player (Panasonic)
- Armchair
- Bump out with fluted African Cherrywood column's
- Joinery high gloss African Cherrywood
- Digital air condition control

Formal Dining

- **Headroom 6'5"**
- Forward of Main Salon
- Formal dining table (6) person high gloss African Cherrywood with inlay
- (6) Formal dining chairs
- Overhead deco light fixture with Halogen lights on dimmers
- Beveled glass cabinets with accent lighting and custom stemware holders
- China cabinets with pegs for China Flatware
- Forward center bulkhead with art lights
- Cabinet to Starboard with drawer and lockers below

Guest Foyer / Owners Stateroom

- **Located Midship**
- Accessed by (8) step stairwell from stbd. forward Main Salon
- Bannister high gloss African Cherrywood and polished stainless
- Stairwell with carpet step pads and Sunbrella runners
- Marble flooring
- Corner art niche with art light on dimmer
- Guest washer & dryer stack style (Bosch)
- Linen / soap locker
- Overhead Halogen lights on dimmer switch
- Central Vac outlet

Master Stateroom

- **Headroom 6'5"**
- Full Beam midship / quiet, most comfortable
- Enter through double high gloss African Cherrywood doors
- Centerline king berth with overhead reading lights
- Custom bedspread and matching pillow shams
- Overhead deco light with mirrored insert
- Beveled mirror wall
- Berth nightstands with lamps
- TV 42" Samsung HD / built-in
- DSS receiver / Direct TV
- Large walk-in closet with built-in shelves, drawers, shoe rack
- Safe/digital

Master Stateroom Ensuite Head

- Marble vanity top with 2 under-hung sinks
- Cherry full width vanity cabinet with storage drawers and brass actuator latches
- Chrome and brass fixtures
- Enclosed full size tub with jacuzzi
- Dual shower heads
- Marble tub surround
- Marble walls in shower/tub area
- Beveled glass mirrored medicine cabinet
- Towel bars, tissue holder and wall mounted soap dishes
- Design wallpaper treatment
- Marble floor
- Exhaust fan
- Linen closet
- Marine toilet, full size
- Wood lighting valance with overhead lighting
- LED night-light and light switches
- Wainscoting on lower walls

Port Guest VIP Stateroom

- **Headroom 6'5"**
- Overhead Halogen lights on dimmers
- Walk-around queen berth with reading lamps
- Custom bedspread with matching pillow shams
- Under berth drawers (4)
- Digital air cond. control
- (2) Opening port lights with black out privacy shade
- Upholstered valance
- Corner cabinet with art light
- TV 19" Vizio HD built-in remote control
- Hanging locker / Cedar lined with automatic light
- (1) Fire extinguisher
- Berth nightstand with lamp and drawers below (2)
- 110v outlet
- Joinery high gloss African Cherrywood
- DSS Receiver (Direct TV)

Port Guest VIP Stateroom Ensuite Head

- Marble flooring
- Mirrored wall
- Mirrored medicine cabinet

- Marble countertop with sink and back-splash
- Single lever faucet with glass holder and soap dish (Grohe)
- Dual 110v outlets
- Exhaust fan 12v
- Freshwater vacuum style Head
- Hand towel holder
- Stall shower with frosted glass door
- Shower handheld sprayer
- Overhead Halogen lighting

Starboard Twin Berth Guest Stateroom

- **Headroom 6'5"**
- **Custom arrangement in lieu of queen berth**
- Twin berths with custom spreads and matching pillow shams
- Berths with reading lights
- Under berth drawers
- Overhead with Halogen lights on dimmer
- Privacy door with lock
- (2) Opening port lights with blackout privacy shade
- Upholstered valance
- Corner cabinet with lighting
- TV built in 18" Vizio HD remote control
- DSS Receiver (Direct TV)
- Blu-ray disc/DVD player (Sony)
- Hanging locker door with full length mirror
- Carpeted flooring
- Joinery high gloss African Cherrywood
- Indirect lighting below berths
- Fire extinguisher

Starboard Twin Berth Stateroom Ensuite Head

- **Headroom 6'6"**
- Mirrored wall
- Mirrored medicine cabinet
- Marble countertop with sink
- Single lover faucet with glass holder and soap dish (Grohe)
- Hand towel holder
- Freshwater vacuum flush style Head
- Overhead Halogen lighting
- Exhaust fan 12v

- Stall shower with frosted door and handheld sprayer
- Dual 110v outlet
- Privacy door with lock

Captain's / Crew Quarters / Foyer Located Forward

- **Foyer headroom 6'7"**
- **Access from Galley from (6) step stairwell with safety grab rail**
- Stairwell with Sunbrella runner
- Captain office / Crew Cabin foyer / carpet flooring with carpet runner
- Central Vac outlet
- Captains desk with drawers and swivel chair with rollers and backrest
- Clothes washer (Bosch)
- Clothes dryer (Bosch)
- Clothes washer and dryer built-in stacked with locker door
- Central Vac hose / cleaning supply locker with automatic light
- Overhead Halogen lighting on dimmers
- Desk light brass
- Over desk ships notebook shelf
- 110v outlet with 2 phone jacks

Captain's Cabin

- **Headroom 6'7"**
- **Located forward to port**
- Overhead Halogen lighting on dimmers
- Captains berth (2) side walk-around 6'2" L x 4'2" W
- Overhead Halogen reading down lights
- Carpeted flooring
- (2) Opening port lights with blackout privacy shade
- (2) Under Berth drawers
- Digital Air Cond. control
- T.V. built-it remote control (19" Vizio HD)
- DSS Receiver (Direct TV)
- Blu-ray Disc Player (Sony)
- Berth nightstand with (2) drawers
- 110v outlet with phone jack
- Storage / shelf with mirror insert and storage lockers
- Hanging locker Cedar lined with mirrored door face
- (1) Handheld fire extinguisher
- Automatic courtesy light in hanging locker
- Captain's Berth with custom bedspread with matching pillow shams

- Privacy door with lock

Captain's Head Ensuite

- **Headroom 6'7"**
- Overhead Halogen lighting
- Wall mounted mirror with medicine cabinet
- Marble countertop with sink
- Single faucet, soap dish, glass holder/ (Gold Grohe)
- Dual 110-v outlet
- Hand towel holder
- Towel rack
- Head freshwater vacuum style
- Marble flooring
- Stall shower with handheld sprayer
- Bi-fold door
- Privacy door with lock
- Exhaust fan 12v

Crew Cabin Forepeak

- **Headroom 6'7"**
- Upper & Lower Berths with custom bedspreads with matching pillow shams
- Hanging locker Cedar lined with automatic light
- (1) Handheld fire extinguisher
- Full-length mirror on hanging locker door
- Digital air cond. control
- (2) Storage drawers under lower Berth
- Access to windlass motor / chain locker
- TV built-in remote control / Vizio 19" HD
- DSS Receiver (Direct TV)
- Blu-ray disc player (Sony)
- Stbd. side built in storage lockers
- Stbd. built-in dresser with storage lockers below
- Carpeted flooring
- Overhead escape / ventilation hatch with screen
- Privacy door with lock

Crew Forward Bunk Cabin / Ensuite Head

- **Headroom 6'7"**

- Privacy door with lock
- Marble flooring
- Overhead Halogen lighting
- Marble countertop with sink
- Single lever faucet with soap dish holder / (Gold Grohe)
- Mirrored medicine cabinet
- Hand towel holder
- Bath towel rack
- Freshwater vacuum style Head
- Exhaust fan 12v
- Stall shower with frosted door
- Shower handheld sprayer

Mechanical

- **T/12V183 T E94 MTU w/1830 Hours 1300HP**
- Air Seps
- Engine Room Engine Gauge Pkg. tachometer, oil pressure
- Gear oil pressure, coolant temp, gear oil temp
- Fuel flow scan meters
- **Engine Room Main Engine start/stop switches**

Gears

- ZF Z2000A / Ratio 2.467:1
- 3" shafts Aquamet 22 HS w/dripleless seals w/spares

Generators

- Port Gen 2927.7 Hours / Stbd. Gen 2980.4 Hours
- **T/Onan 21.5 kW / 1800 RPM / Model MDKAE-4959681**
- Sound shields / start / stops with gauge pkg. & hour meters
- Oil change system
- Racors 500 water fuel separator filters
- (2) 12v starting batteries with charger
- Battery selector switch
- Battery parallel – batteries new 5-14-19

Props

- Rolla 5 blade Nibral 38.9" D x 46.7" P

Electrical

- 115v / 230v / 24v A.C.
- 12v / 24v/ 48v D.C.
- All main engine, house, gen batteries / **Replaced 5-14-19**
- Cablemaster 90' x 100-amp cord with Charles Isolation Transformer
- (4) Subpanels / Galley, Pilothouse, (2) Owner / Guest Quarters
- SmartY / 100 AMP to (2) 50 AMP pigtail

Oil Change System

- 110v reversible pump
- Mains, gears, gen sets
- 35 gal. clean oil tank / fiberglass with quick disconnect
- 35 gal. dirty oil tank / fiberglass with quick disconnect
- Level gauge on clean and dirty oil tanks

Watermaker

- 1200 GPD Sea Recovery with freshwater flush
- Remote start in Pilothouse
- (Note) Needs serviced

Freshwater System

- 400 Gallon fiberglass
- 110v Mach V / Headhunter Pump with Accumulator Tank
- 24v back up pump
- Freshwater canister style filter / loc. Engine Room
- Remote Spin on Filter / Galley
- Freshwater wash down / Foredeck / Boat Deck, Aft Deck
- Swim platform hot / cold shower
- Hot water heater 38 gallon / 240v with circulating pump

Bow Thruster

- 24v Dual 12v batteries AGM's w/battery switch

- Charger / Charles 40 amp

Windlass

- 24v Dual 12v batteries AGM w/battery switch
- Windlass w/Chain Gypsy / 200' x 3/8"
- Anchor 80lb stainless steel plow style
- Maxwell windlass with chain stopper

Fuel System

- Single fiberglass tank 2000 gal.
- 24v fuel prime pump main, gens, Racors
- Dual Racor water separator fuel filters 1000 series with selector valves
- Vacuum gauges

EPIRB

- ACR / RDL – 32 CAT 1 / Loc. Boat Deck
- Next certification 7/2022

SAT Phone

- KVH / Trac Phone 25

Air Draft

- 24'7" top of SAT Dome

Life Raft

- SOLAS 1996 / 8-man canister / Loc. Stbd. Boat Deck Bulwark

Davit

- 1500 lbs. Nautical Structures / hydraulic 220v

- Boom extension, rotation, elevation with remote control plug in

Air Intake Blowers

- Port and stbd. 220v intake blowers with manual speed control

Ladders

- (5) Step vertical ladder (Marquipt)
- (7) Step 19" Sea Stair with handrail

Covers

Galley fwd. windows black Textiline, Pilothouse fwd. windows black Textiline, cover for Foredeck Sun Pad, Skylounge aft doors / glass bulkhead white Textiline, Aft Deck table, 3 chairs, sofa covers, Skylounge Aft Settee, table, 2 chairs covers solid tan Sunbrella covers fwd. Helm, fwd. Galley, Main Salon aft doors, Cockpit cover with white stamoid.

Engine Room

- **Headroom 6'6"**
- Full Beam / Access from watertight Transom Door
- Overhead 110v fluorescent lights
- Overhead 24v lights
- Port & stbd. AC/DC electrical panels
- Port & stbd. work benches with toolbox + 4" Vice
- 110v Outlet with GFI
- Overhead stainless-steel grab rails
- Forward overhead CCTV camera with pan + zoom color
- Forward Bulkhead 3 door storage cabinet
- Overhead & bulkhead sound insulation
- Freshwater spigot
- Overhead rod storage (8)
- Diamond Plate Flooring
- Underwater lights switch
- Switches for Transom jet ski pods

Carpet Runners

- Skylounge. Main Salon. stairs to Guest Quarters. stairs to fwd. Crew area. Crew Office / tan

- DSS Receivers / Captain Cabin, Crew Cabin, Galley, Main Salon, Skylounge, Master Stateroom, Port VIP Stateroom, Stbd. VIP Stateroom
- All TV's upgraded to HD's

Wave Runners

- Port Yamaha GP1300R 2007 (2) person
- Stbd. SeaDoo 2002 RX (2) person

Tender

- 14' 2002 Novurania
- Single 50 HP Yamaha 4-stroke with trim fin and 3 blade stainless steel prop
- (1) 12v battery / New 3-18 with battery switch
- Electric start with power trim and tilt
- Bilge pump / auto, manual
- Navigation lights
- Steering wheel 13" stainless steel
- Tachometer Yamaha
- Speedometer Yamaha
- Storage cover
- Lift bridle
- Chocks with tie downs
- Helm bench seat with backrest
- Center bench seat with cushion and storage
- Bow seat with cushion and storage
- Anchor / Danforth with 1/4 leader chain and 100' x 5/16" nylon rode
- (1) Fire extinguisher
- (6) Life Jackets
- Water separator fuel filter

Brokers Comments

“ENNUI GO” is an excellent example of one of Lazzara’s most popular models. The 80’ Skylounge / Grand Salon has truly withstood the test of time and appreciates an excellent pedigree toward resale. Lazzara successfully accomplished a timeless / traditional Euro exterior styling with an award-winning space plan that continues to appeal to the American yachtsmen.

“ENNUI GO” was custom built for her present original owners and has been looked after by the same captain which oversaw her construction while being built. **The first thing you will notice**

as you approach her is the sparkling awlgripped exterior and will feel as though you're on a much larger yacht as you go through her accommodations. A must see if you're contemplating a larger family yacht.

Исключения

При продаже яхты исключаются личные вещи владельца.

Отказ от ответственности

Компания предоставляет описание судна или яхты добросовестно, но не может гарантировать точность этой информации, а также не ручается за техническое состояние. Покупатель должен проинструктировать своих агентов или оценщиков исследовать представленную информацию более подробно, по собственному желанию. Продажа судна или яхты, изменение цены или снятие с продажи будет происходить без предварительного уведомления.

ФОТОГРАФИИ

Foredeck / Sunpad



Foredeck



Skylounge Aft Deck



Skylounge Aft Deck / Tender



Skylounge Aft Deck



Tender



Aft Deck



Aft Deck



Aft Deck



Aft Deck / Starboard Control Station



Skylounge Helm



Helm



Skylounge



Skylounge



Skylounge



Skylounge



Skylounge



Skylounge



Grand Main Salon



Forward View Grand Salon



Main Salon Formal Dining



Grand Main Salon



Forward View Grand Salon



Grand Main Salon



Hi / Lo TV Cabinet



Main Salon 40" HD Pop Up TV



On Deck Day Head



On Deck Day Head



Country Kitchen Style Galley



Galley



Country Kitchen Style Galley



Galley



Galley



Galley



Galley



Owner / Guest Quarter's Staircase



Owner / Guest Stateroom's Foyer



Master Stateroom



Master Stateroom



Master Stateroom



Master Stateroom



Master Stateroom Desk / Vanity



Master Stateroom Desk / Vanity



Master Stateroom Ensuite Head



Master Stateroom Ensuite Head



Master Stateroom Jacuzzi Tub / Shower



Master Stateroom Head



Port Guest VIP Stateroom



Port Guest VIP Stateroom



Port Guest VIP Stateroom



Port VIP Guest Head



Port Guest VIP Head



Port Guest VIP Shower



Starboard Guest Twin Berth Stateroom



Starboard Guest Twin Berth Stateroom



Starboard Twin Berth Guest Stateroom



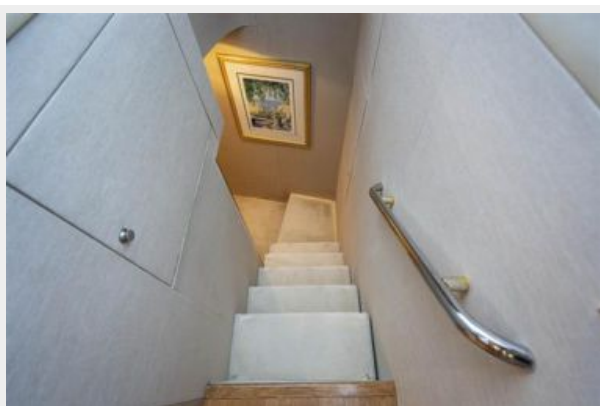
Starboard Ensuite Guest Head



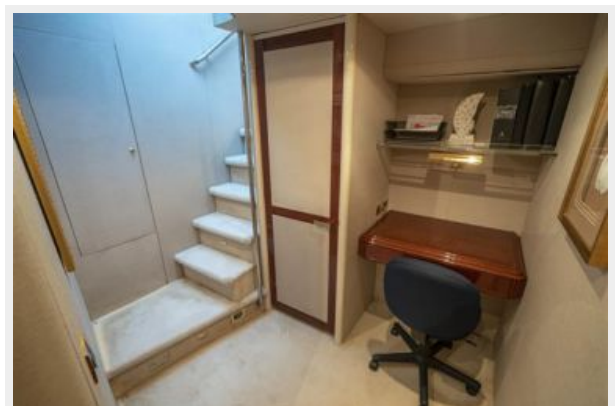
Starboard Ensuite Guest Head



Forward Stairwell to Crew Quarter's



Forward Captain's Office



Crew Washer / Dryer



Captain's Cabin



Captain's Cabin



Forward Captains Cabin



Forward Port Captain Ensuite Head



Forward Crew Cabin



Forward Crew Cabin



Forward Crew Cabin Ensuite Head



Forward Crew Cabin Ensuite Head



Rear Full Beam Engine Room



Engine Room



Stern Wave Runner Garages



Stern Profile



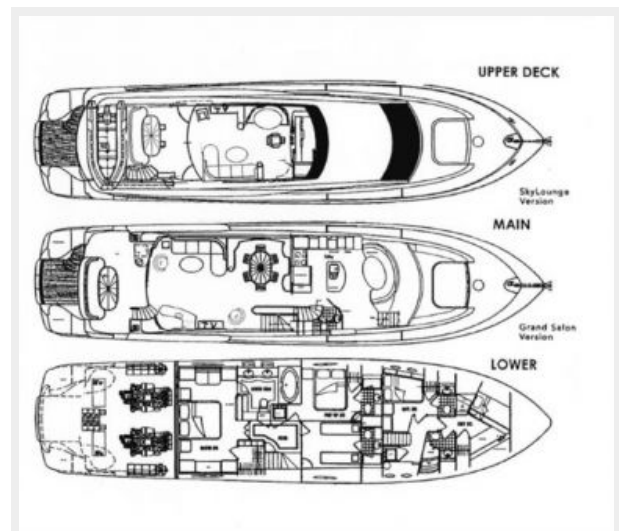
Bow Profile



Side Profile



Layout Arrangements



КОНТАКТЫ

Андрей Шестаков (Andrey Shestakov) – ведущий яхтенный брокер отдела продаж яхт и судов компании Shestakov Yacht Sales Inc. Официальный представитель Shestakov Yacht Sales Inc. для русскоговорящих клиентов в центральном офисе компании в Майами/Форт Лодердейл/Флорида/США.

Контактная информация

Email: andrey@shestakovyachtsales.com

Web: shestakovyachtsales.com

Телефоны

Краснодарский край: **+7(918)465-66-44**

США, Майами, Флорида: **+1(954)274-4435**

Время работы

Понедельник – Суббота: **9:00 - 21:00**
EDT

Воскресенье: **Закрито**

Адрес



Harbour Towne Marina, 850 NE 3rd St,
STE 213, Dania, FL 33004