

## TRUE GRITS — HATTERAS



**Builder:** HATTERAS

**Year Built:** 2002

**Model:** Sport Yacht

**Price:** PRICE ON APPLICATION

**Location:** United States

**LOA:** 60' 0" (18.29m)

**Beam:** 17' 4" (5.28m)

**Max Draft:** 5' 9" (1.75m)

**Cruise Speed:** 27 Kts. (31 MPH)

**Max Speed:** 29 Kts. (33 MPH)

Our experienced yacht broker, Andrey Shestakov, will help you choose and buy a yacht that best suits your needs **TRUE GRITS — HATTERAS** from our catalogue. Presently, at Shestakov Yacht Sales Inc., we have a wide variety of yachts available on our sale's list. We also work in close contact with all the big yacht manufacturers from all over the world.

If you would like to buy a yacht **TRUE GRITS — HATTERAS** or would like help answering any questions concerning purchasing, selling or chartering a yacht, please call **+1(954)274-4435**

# TABLE OF CONTENTS

TABLE OF CONTENTS	2
SPECIFICATIONS	7
Basic Information	7
Dimensions	7
Speed, Capacities and Weight	7
Accommodations	7
Hull and Deck Information	7
Engine Information	8
DETAILED INFORMATION	9
Walkthrough	9
Overview	9
Cockpit	9
Salon	10
Audio & Video Equipment	10
Galley/Dinette	11
Companionway	12
Master Stateroom	12
Master Head	13
VIP Stateroom	13
Guest Stateroom (Starboard Bunks)	14
Guest Heads	14
Flybridge	15
Flybridge Electronics	16
Tuna Tower Electronics	16
Fishing Equipment	16
Engine Compartment and Bilge	17
Electrical Systems	19
Hardware and Miscellaneous	19

Exterior Finish/Construction	20
Upgrades/Key Points	21
Exclusions	21
Summary	22
Exclusions	22
Disclaimer	22
PHOTOS	23
2002 60' Hatteras Convertible Profile	23
2002 60' Hatteras Convertible Profile	23
2002 60' Hatteras Convertible Main Salon	23
2002 60' Hatteras Convertible Dining	23
2002 60' Hatteras Convertible Main Salon	23
2002 60' Hatteras Convertible Dining	23
2002 60' Hatteras Convertible Galley	24
2002 60' Hatteras Convertible Galley	24
2002 60' Hatteras Convertible Main Salon	24
2002 60' Hatteras Convertible appliances	24
2002 60' Hatteras Convertible Stairs	25
2002 60' Hatteras Convertible passageway	25
2002 60' Hatteras Convertible appliances	25
2002 60' Hatteras Convertible Master Stateroom	25
2002 60' Hatteras Convertible Master Stateroom	26
2002 60' Hatteras Convertible Master Stateroom	26
2002 60' Hatteras Convertible Master Bath	26
2002 60' Hatteras Convertible Master Head	26
2002 60' Hatteras Convertible Master Bath	27
2002 60' Hatteras Convertible Master Bath	27
2002 60' Hatteras Convertible VIP Stateroom	27
2002 60' Hatteras Convertible VIP	27

2002 60' Hatteras Convertible VIP Stateroom	27
2002 60' Hatteras Convertible Cabinets	27
2002 60' Hatteras Convertible	28
2002 60' Hatteras Convertible VIP Bath	28
2002 60' Hatteras Convertible 3rd Stateroom/Crew Cabin	28
2002 60' Hatteras Convertible Head	28
2002 60' Hatteras Convertible 3rd Bath w/ shower	29
2002 60' Hatteras Convertible 3rd Stateroom	29
2002 60' Hatteras Convertible Head	29
2002 60' Hatteras Convertible 3rd Bath w/ shower	29
2002 60' Hatteras Convertible 3rd Bath w/ shower	30
2002 60' Hatteras Convertible Helm	30
2002 60' Hatteras Convertible Helm	30
2002 60' Hatteras Convertible Helm Station	30
2002 60' Hatteras Convertible Flybridge	30
2002 60' Hatteras Convertible Flybridge	30
2002 60' Hatteras Convertible Flybridge	31
2002 60' Hatteras Convertible Flybridge	31
2002 60' Hatteras Convertible Flybridge	31
2002 60' Hatteras Convertible Flybridge	31
2002 60' Hatteras Convertible Flybridge	31
2002 60' Hatteras Convertible Flybridge	31
2002 60' Hatteras Convertible Flybridge	31
2002 60' Hatteras Convertible Flybridge	32
2002 60' Hatteras Convertible Tower	32
2002 60' Hatteras Convertible Tower	32
2002 60' Hatteras Convertible Tower	32
2002 60' Hatteras Convertible Tower	32
2002 60' Hatteras Convertible Tower	32
2002 60' Hatteras Convertible Bow	33

2002 60' Hatteras Convertible Cockpit	33
2002 60' Hatteras Convertible Cockpit	33
2002 60' Hatteras Convertible Cockpit	33
2002 60' Hatteras Convertible Cockpit with Bluewater Fighting Chair	33
2002 60' Hatteras Convertible Cockpit	33
2002 60' Hatteras Convertible Aft Deck	34
2002 60' Hatteras Convertible with Bluewater Fighting Chair	34
2002 60' Hatteras Convertible Fish Box	34
2002 60' Hatteras Convertible	34
Engine room- new risers on main engines installed 7/19	35
2002 60' Hatteras Convertible Cockpit	35
Engine room- new risers on main engines installed 7/19	35
Engine room- new risers on main engines installed 7/19	35
Engine Room	35
2002 60' Hatteras Convertible Engine Room	35
Engine room- new risers on main engines installed 7/19	36
2002 60' Hatteras Convertible Engine Room	36
2002 60' Hatteras Convertible Engine Room	36
2002 60' Hatteras Convertible Engine Room	36
2002 60' Hatteras Convertible Panel	37
2002 60' Hatteras Convertible Engine Room	37
2002 60' Hatteras Convertible "TRUE GRITS"	37
2002 60' Hatteras Convertible	37
2002 60' Hatteras Convertible Layout	38
2002 60' Hatteras Convertible	38
CONTACTS	39
Contact details	39
Telephones	39
Office hours	39

Address

39

---

# SPECIFICATIONS

## Basic Information

**Category:** Sport Yacht

**Sub Category:** Convertible

**Model Year:** 2002

**Year Built:** 2002

**Country:** United States

**Vessel Top:** Full / Tuna Tower

**Fly Bridge:** Yes

**Cockpit:** Yes

## Dimensions

**LOA:** 60' 0" (18.29m)

**Beam:** 17' 4" (5.28m)

**Max Draft:** 5' 9" (1.75m)

## Speed, Capacities and Weight

**Cruise Speed:** 27 Kts. (31 MPH)

**Cruise Speed Range:** 450

**Max Speed:** 29 Kts. (33 MPH)

**Gross Tonnage:** 66 Pounds

**Water Capacity:** 200 Gallons

**Fuel Capacity:** 1622 Gallons

## Accommodations

**Total Cabins:** 3

**Sleeps:** 6

## Hull and Deck Information

**Hull Material:** Fiberglass

## Engine Information

---

**Engines:** 2

**Manufacturer:** CAT

**Model:** 3412E

**Fuel Type:** Diesel

---

# DETAILED INFORMATION

---

---

## Walkthrough

---

TRUE GRITS is a 2002 60' Hatteras Convertible custom built for a NASCAR organization. The 60' Hatteras is a larger and improved version of the 54' Hatteras Convertible. TRUE GRITS has a larger than standard bed in the master stateroom (70" wide- almost a king size mattress) with ensuite head and shower and a large hanging locker on the bulkhead on the port side. Across the passageway is a bunk bed cabin with its own head that can be used for crew. Found along the passageway is the washer and dryer to starboard side. Two of the heads have skylights that provide natural light. All the way forward in the bow is the VIP stateroom with a bed for 2 people (58" wide- almost queen size) and an ensuite head and shower. TRUE GRITS has been a well-maintained 2002 60' Hatteras Convertible her whole life. With 2989 hours currently, she should be able to provide a new owner with many good years of service with just regular maintenance.

---

## Overview

---

The owner of True Grits has always employed professional captains and the boat has only been lightly used, mostly for cruising! Proper maintenance has always been performed.

TRUE GRITS has many special features that separates the boat from other 2002 60' Hatteras Convertibles including (2) 21 kW generators, spacious Athwartship master stateroom layout, Bluewater fighting chair (currently in storage) and rocket launcher, custom 75 gallon live well, custom teak sole and covering boards in cockpit (recently replaced), and a 3-camera system that can record and save all the action. This 2002 60' Hatteras Convertible is an equally comfortable boat for either fishing or cruising! True Grits is mostly original.

---

## Cockpit

---

It immediately becomes apparent that much emphasis has been placed on making the cockpit of this 2002 60' Hatteras Convertible a very inviting space. Imagine sitting in the bluewater fighting chair surrounded by beautiful teak battling it out with a tenacious sailfish while your friends are cheering you on.

- Custom teak cockpit and covering boards **\*Upgrade\***
- Molded fiberglass, 151 square feet
- Port and starboard hatches to lazarette and fuel tank connections
- ISO standard scuppers in cockpit and cockpit hatches
- Polished anodized welded aluminum ladder to flybridge with acrylic steps
- Coaming gate at transom door
- Shoreline electrical inlet and retractable shore cord
- Seawater and freshwater wash down outlets with Hatteras patented quick disconnect

- Shore water connection with pressure reducing valve and Hatteras patented quick disconnect
- Bait and tackle center including sink with faucet, cutting board and storage below (port)
- Double sized bait freezer, drop in (port)
- Deep storage tub (starboard)
- Removable 80" fish box with macerator, flush in deck
- Molded in transom fish box with drain
- Door and hatch with chrome plated brass lock to engine compartment
- Steps with molded in storage and door to deckhouse
- Fiberglass cockpit boarding step box
- DC overhead lights under flybridge overhang
- Steel mounting plate laminated in deck for fighting chair
- Telephone/CATV inlet
- Polished 316L stainless steel rod holders, flush mount set of 4
- Stereo speakers with volume control

---

## Salon

The Antico teak flooring along with all of the cherry wood appointments exude class and sophistication while retaining a casual feel aboard this 2002 60' Hatteras Convertible!

- Antico Teak **\*Upgrade over carpet\***
- Removable padded paned headliner
- Finished wood bulkheads
- Fluted wood valences with 1" wood blinds
- Fixed frameless windows with tinted safety glass Whirlpool ice maker
- Telephone outlet
- AC and DC light fixtures
- AC dimmable lights
- AC duplex outlets
- Stereo speakers
- Entertainment center including 42" Sony Plasma Sat TV with "surround sound" stereo receiver with DVD/CD player behind doors
- Custom Lshaped lounge with rod storage, loose cushions, arm rests and double needle stitching
- Bottle and glass storage
- Throw pillows
- Polished 316L stainless steel threshold at salon door
- Air conditioning disbursement through fluted valances, port and starboard
- Smoke detectors

---

## Audio & Video Equipment

The 42" flat screen TV will keep the family or crew entertained after a day of cruising or fishing on board this 2002 60' Hatteras Convertible, whether you are watching your favorite DVD or the latest TV show on the satellite system.

- 3-Camera system with hard drive
- Satellite Radio/iPod integrated system
- 42" Sony Plasma TV (Sat TV enabled w/surround sound)
- DVD player
- Yamaha RXV1000 Receiver
- Yamaha CDC675 CD changer
- Sony DVD/CD changer
- TV Sat system is hooked to new KVH
- Tracvision G6 automatic
- The Master and VIP each have stereo and television TV system has three independent receivers

The satellite TV system is outdated because it works on satellites that are no longer available.

## Galley/Dinette

---

- Antico vinyl strip flooring
- High gloss cherry cabinets
- Granite offwhite countertops
- Removable padded panel headliner
- Fluted wood valences with 1" wood blinds
- Fixed frameless windows with tinted safety glass
- Solid surface countertops with integral stainless steel sink and storage cabinets made of finished wood AC under-counter refrigerator and freezer drawer units
- AC Whirlpool fourburner cooktop
- Sharp Carousel microwave/convection oven covered by cabinet doors
- One HP continuous feed garbage disposal
- Ushaped dinette with drawers under seat
- Electric water level gauge
- AC and DC light fixtures
- AC dimmable lights
- AC duplex outlets
- Throw pillows
- Telephone outlet
- Air conditioning disbursement through fluted valances, port and starboard
- Drawer access to chart flat area via galley
- Finished wood inserts on appliance facias

---

## Companionway

---

- Carpeting
- Removable padded panel headliner
- Padded panel wall covering
- DC light fixture
- Flush panel doors with door stops to master stateroom, guest staterooms and guest head
- Steps to salon with storage
- Whirlpool H.D. Washer/dryer
- Cedar-lined linen locker
- Electric panels
- Access to port chart flat with DC light

---

## Master Stateroom

---

You will feel right at home after a long day out on the water when you retire to this spacious and inviting Master Stateroom. The Athwartship layout gives you more space and comfort than the standard layout on other 2002 60' Hatteras Convertibles.

- Athwartship Layout **\*Upgraded Option\*** Carpeting
- Removable padded panel headliner
- Finished wood bulkheads/wall covering
- Fluted wood valance
- Padded covering on hull side
- Almost King sized tapered berth with upholstered headboard and cedarlined storage underneath accessed via pneumatic cylinders
- Upholstered berth base
- Polyfoam mattress, spread, throw pillows, pillows, pillow shams, mattress pad and sheets
- Cedar-lined hanging locker with doors and automatic light
- Nightstands
- Dresser with drawers and entertainment center above
- AC and DC light fixtures
- AC dimmable lights
- Indirect lighting
- AC duplex outlets
- 20" TV/VCR combo with MATV outlet
- AC AM/FM stereo receiver and CD player
- Stereo speakers
- Telephone outlet
- Full length mirror
- Clear pleximirror (aft bulkhead) standard arrangement
- Private access to head with foot stop
- Air conditioning disbursement through fluted valance

- Smoke detector
- DC low voltage lights under berth

---

## Master Head

---

- Antico vinyl strip flooring
- Removable padded panel headliner
- Wallcovering
- Solid surface countertops with solid surface backsplash, side splash, and integral sink over storage cabinet made of finished wood with bowed fronts
- Hardwood base boards
- Stall shower, door and automatic enclosed sump pump
- Storage cabinet with mirror
- Screened overhead ventilator hatch with privacy cover
- Towel bar
- Freshwater toilet
- 120V AC freshener blower
- AC and DC light fixtures
- AC duplex outlet
- Plexi mirror around upper cabinet
- DC low voltage lights under toe kicks
- Air conditioning discharge

---

## VIP Stateroom

---

Your guests will be pleased to have their own large bed, closet space, and private head while staying in this well-appointed VIP Stateroom.

- Carpeting
- Removable padded panel headliner
- Finished wood bulkheads/wall covering
- Padded panels on hull side
- Almost Queensized (58" wide) tapered bed with upholstered headboard and cedar lined storage underneath accessed via pneumatic cylinders
- Upholstered berth
- Polyfoam mattress, spread, throw pillows, pillows, pillow shams, mattress pad and sheets
- Dressers port and starboard
- Rope storage locker access
- Cedarlined hanging/storage lockers with automatic light
- Overhead storage lockers, port and starboard
- Screened overhead hatch with privacy cover
- Nightstands, port and starboard

- AC and DC light fixtures
- AC dimmable lights
- AC duplex outlets
- Stereo speakers with volume control
- Fulllength mirror
- Clear pleximirror (forward bulkhead)
- Private access to head with foot step
- Smoke detector
- DC low voltage lights under berth
- Entertainment center with TV and Stereo

---

## Guest Stateroom (Starboard Bunks)

---

- Carpeting
- Removable padded panel headliner
- Finished wood bulkheads/wall covering
- Padded panels on hullside
- Upper and lower berths with storage under lower berth
- Upholstered bed bases
- Polyfoam mattresses, spreads, throw pillows, pillows, pillow shams, mattress pads and sheets
- Nightstand with drawers
- Cedarlined hanging locker with door and automatic light
- Fulllength mirror
- AC and DC light fixtures
- AC dimmable lights
- AC duplex outlets
- Stereo speakers with volume control
- Private access to head with foot stop
- Mirrored aft bulkhead

---

## Guest Heads

---

The VIP stateroom has its own private head and the third guest stateroom (or crew cabin) has its own head with access from the passageway so that it can also be used as a powder room.

- Antico vinyl strip flooring
- Removable padded panel headliner
- Wall covering
- Upper storage cabinet with mirror
- Solid surface countertops with solid surface backsplash, side splash and integral sink over

storage cabinet made of finished wood with bowed fronts

- Stall shower with door and automatic enclosed sump pump
- Screened overhead hatch with privacy cover
- Towel bar
- Freshwater toilet
- 120V AC air freshener blower
- AC and DC light fixtures
- AC duplex outlet
- Plexi mirror around upper cabinet
- Hardwood base boards
- DC low voltage lights under tow kicks

---

## Flybridge

---

The expansive flybridge, with its Bluewater Helm chairs, wraparound seating, pod helm, and pop-up tournament console gives the captain a commanding view of the surrounding seascape.

- Molded Fiberglass
- Toploading insulated drink box
- Straight lounge to port and Lshaped lounge to starboard with removable vinylcovered polyfoam cushions and storage underneath
- Rod storage space in port bench seat (open flybridge)
- Additional storage areas beneath Lshaped seat and console
- Neutral interlock switches allowing engine to start in neutral only
- Polished anodized welded aluminum rails and stanchions
- Powdercoated grab rails
- Control station with all necessary switches and dimmable lighted instrument panel
- Engine sync control
- Compass with dimmable
- Pod console with custom wheel and single lever clutch and throttle controls (electronic) with emergency back up and trolling valve control switches
- Hydraulic power assisted steering
- Rudder angle indicator
- Helmsman and companion seats, both adjustable and with backing plate
- Electric fuel gauges
- AC weatherproof receptacle
- Stereo speakers with volume control
- Northstar 952 GPS/plotter, Sea 157 VHF, Robertson AP20 autopilot, depth and speed
- 24V DC distribution panel

---

## Flybridge Electronics

---

- Model M5 KVH Sat dome 12/07
- Furuno spd./depth
- (3) SAT receivers for TV's
- Iridium SAT phone
- Mini M SAT phone
- XM Weather works
- SAT Radio bridge and salon and cockpit
- (2) VHF bridge one and hand remote in cockpit (ICOM)
- (4) Bose speakers bridge
- (4) Speakers cockpit
- Northstar 962 & 952X (due for replacement)
- Furuno 72nm radar
- Furuno FCV292 color recorder
- Simrad AP20 autopilot
- Clairion AM/FM with CD stereo
- ICOM M127 VHF radio
- SEA 235 SSB radio
- Dytek ST1000 digital temp gauge MMI
- 110 Hatteras monitor system
- Trolling valves
- Ritchie compass
- Furuno Navnet (due for replacement)

Note: Some of the electronics are not fully functional and replacement parts may not be available. The Garmin color plotter is working, the Furuno radar works through the Navnet are both working now. The Satellite TV system is out of date.

---

## Tuna Tower Electronics

---

- ICOM VHF
- Furuno RD30
- Ritchie compass
- Northstar 952

---

## Fishing Equipment

---

The fishing equipment on board this 2002 60' Hatteras Convertible gives you all the tools and

more to bring in the catch of a lifetime!

- Custom Teak cockpit and covering boards
- Custom 75 gal. live well
- Bluewater fighting chair and rocket launcher
- Cockpit freezer compressor and pump
- Live well pumps
- Pedestal and stand alone rocket launcher
- (2) Electric teaser reels built-in cockpit hard top
- New ice chipper
- Remote controls for cockpit
- Cockpit cover
- Pipewelders 13 step full tuna tower (original aluminum in great condition)
- Five spreader lights aft and two forward, also has recessed nav and courtesy lights in hardtop
- Pipewelders triple spreader outriggers
- Center rigger (not mounted)
- Bluewater helm and companion seats (F/B)
- Built-in rod storage on flybridge
- Eskimo ice chipper
- Two full size fish boxes (one in sole, one in transom)
- Large freezer/refrigerator/built-in at aft bulkhead sink area
- Mounted rod holders
- Two rod storage compartments on F/B
- Underwater lights 110 volt
- Large transom door
- Fresh & Salt water washdown

## Engine Compartment and Bilge

- Engine Hours: Starboard 3015 as of 3/17/2021/ Port 3012 as of 3/17/2021
- Generator Hours: Starboard 2445/ Port 1759 as of 3/17/2021
- Twin Caterpillar 3412E Turbo Diesel 1400 H.P. each (recent service and all books and records available)
- Twin ONAN 21.5kw generators
- Water manifold block with centralized shutoff valve for sinks, showers, and toilets
- AC fluorescent lights
- DC lights
- DC bilge blower
- Twin diesel, freshwater cooled main engines with marine gears, electric trolling valves, neutral interlocks, hour meters, alternators, fuel filters, external seawater strainers and

exhaust silencers

- (2) 21.5kW freshwater cooled Onan diesel generator(D) with seawater strainer, remote start, water separator, hour meter, water lift muffler and sound enclosure with secondary shock mounts
- Fiberglass air intake system for engine room and engine combustion air with baffling and filters to minimize water intrusion
- Insulation
- Polyethylene water lines
- Fixed fire extinguishing system for engine compartment with automatic and remote manual controls, plus audible and visual discharge signals
- Pressurized 230V AC freshwater pump, with 20 gallon pressure tank, central freshwater charcoal filter and back flush capabilities
- 230V AC 30 gallon electric water heater
- Fresh water fill hose for engines and generator with Hatteras patented quick disconnect
- 24V DC bilge and sump pumps, three at 3700 gph, with heavy duty float switches and protective guards Bronze/chrome plated ballvalves through bolted in solid fiberglass on and underwater though hull fittings with electrical bonding throughout
- AC compressed air system with air line and regulator
- U.L. Marine listed fiberglass fuel and holding tanks with bronze fittings
- Fuel tanks coated with fire retardant paint
- Fiberglass water tanks, constructed with FDA approved resin, with bronze fittings
- Sewage holding tank with 24V DC macerator, plumbed for dockside pumpout with audible alarm and display, as part of systems monitor programmable logic controller
- U.L. Marine listed fuel filter/water separator, generator
- ABS-approved duplex fuel filters/water separators with bypass manifold, engines
- Monitoring consoles for main engines include all necessary gauges, start and stop switches (CAT 3412)
- 110V AC reversible oil changing system for engines, gear and generator with Hatteras patented quick disconnect Electric fuel priming pumps, engines
- Electric fuel transfer system with filtration and dry tank protection for pump
- USCG type A1 U.L. Marine approved fuel lines
- Seawater pressure system with AC pump with expansion tank Air conditioning compressors and pumps
- Powder coated grab rails
- Painted engine room and bilges, polyurethane
- Rubber deck mat between engines Isolated discharge sea chest
- Transducer well, glycol filled Sealed shower sumps
- Pultruded fiberglass rudder shelf
- 1" Stainless steel steering tie bar with pivoting selfaligning ball joint connection at all cylinder and tie bar connections
- Insulation overhead
- New engine risers installed 6/28/2019

---

## Electrical Systems

---

- Two 24 volt banks of heavy duty, 12 volt marine batteries mounted in fire retardant fiberglass boxes
- Gel/lead acid compatible 240 volt automatic/programmable battery charger, 50/60 Hz
- Automatic battery paralleling system with switch at control console
- Air conditioning 59,000 BTU, with reversecycle heating, with soft starting AC compressors, automatically staged and individually controlled with SMX controls
- Two Onan 21.5 kW generators \*Upgrade\*
- One 240 volt, 50amp, transformer connected retractable shore cord with over current protection
- One spare 50amp shore cord
- AC and DC light fixtures
- AC dimmable lights
- AC duplex outlets with ground fault protection
- Battery control panels with fuses and isolation switches
- DC distribution panel with magnetic circuit breakers and battery condition meter
- DC distribution panel with magnetic circuit breakers (engine compartment)
- DC electronics panel with magnetic circuit breakers (bridge)
- AC distribution panel with magnetic circuit breakers
- AC switching panel with voltage selector switch, volt meter, amp meter, frequency meters, generator start/stop controls, interlock selector, breakers and voltage boost switches
- Systems monitor with programmable logic controller readout, visual and audible signals for engine, high bilge water, fire warning in engine compartment, fire extinguisher discharge, AC power loss and 3/4 full holding tank monitor
- Ground fault protection on AC receptacles and lighting circuits
- Navigation lights
- SSB radio ground screen laminated in cabin top
- Telephone/CATV inlet
- Telephone and CATV shoreline cords, one each
- Omnidirectional TV antenna
- U.L. 1426 listed boat cable, tin coated with insulation

---

## Hardware and Miscellaneous

---

- All hardware chrome on brass or welded and polished 316L stainless steel
- Fiberglass pulpit with welded and polished 316L stainless steel anchor chute and roller
- 60lb. Danforth anchor, anchor line and deck hawse pipe
- Two polished 316L stainless steel stern cleats and hawse pipes, drilled and tapped in aluminum backing plate Four polished 316L stainless steel spring line cleats with chafing strips, drilled and tapped in aluminum backing plate
- Polished 316L stainless steel bow cleats and chocks with chafing strips, drilled and tapped in aluminum backing plate

- Polished anodized welded aluminum rails on bow, sidedeck and flybridge, drilled and tapped in aluminum backing plates
- Powdercoated gal rails on cabin side and flybridge interior
- Polished anodized welded aluminum flybridge ladder with acrylic steps
- Fog bell
- Zincs on rudders and shafts
- Dual air horn
- Bow staff with pennant
- Portable “drychem” and halon fire extinguishers (7), U.L. approved type in compliance with USCG and ABYC standards
- Welded and polished 316L stainless steel trim tabs with zincs
- Integral manganese bronze struts with zincs
- Manganese bronze shaft/rudders with zincs
- 7-bladed propellers, Nibral high performance
- Alloy 22 high strength propeller shafts, 3 1/2”
- Manganese bronze dripless shaft and rudder seals with thrust bearing
- Central vacuum system
- Prom removal/installation tool
- Black fenders (3)
- 316L stainless steel reboarding steps with cockpit
- Deck plates for fuel and water fills and waste pump out
- Heavy duty bronze engine
- Engine and generator exhaust exits through hull side near transom

## Exterior Finish/Construction

---

- AWLKRAFT 2000 Polyurethane exterior painted finish solid fiberglass hull bottom, (no core)
- Isophthalic gelcoat, interior layer, black
- Isophthalic gelcoat, exterior layer, white Blisterresistant vinyl ester resin in hull bottom skin coat
- Topsides and superstructure, polyurethane coating Polymer/copper based antifouling bottom paint
- Boot stripe, polyurethane coating
- Decks, nonskid surface, polyurethane paint with polymeric beads
- Solid fiberglass hull bottom
- Hull sides and superstructure laminated with divinycell core
- Fiberglass stringers
- Steel laminated in stringers at key locations to bolt engine mounts
- Engine room bulkheads and decks are vacuum bagged composite construction using PVC foam core with layers of fiberglass laminate on each side

---

## Upgrades/Key Points

---

Check out all that has been added to this immaculate 2002 60' Hatteras Convertible "TRUE GRITS"!

- Northstar 952 in tower
- Model M5 KVH Sat dome
- 3 SAT receivers for TV's
- Iridium SAT phone
- Mini M SAT phone
- XM Weather works
- SAT Radio bridge and salon and cockpit
- 2 Northstars in bridge
- 2 VHF bridge hand remote in cockpit (ICOM)
- Custom Teak cockpit and covering boards
- Custom 75 gal. live well
- Boat does 33 knots max and cruises at 29 when not loaded and with ideal conditions
- New non-corrosive thru hull lights
- 2 Electric teaser reels built in
- VERY LOW fuel usage due to prop tuningspent 35k on prop tuning for speed/efficiency and load 2 generators
- Ice chipper
- Cockpit freezer compressor and pump
- Remote controls for cockpit
- A/C pumps (3)
- A/C compressors
- New Simrad autopilot pump and transducer
- Bluewater fighting chair (currently in storage) and rocket launcher new 3/08
- Pedestal and stand alone rocket launcher
- 4 Bose speakers bridge
- 4 speakers cockpit
- Furuno plotter
- Furuno 72-mile radar
- Cockpit cover
- Flat screen with surround sound
- 3-camera system with hard drive XM/iPod integrated system
- Trash compactor
- Garbage disposal
- Washer dryer
- Wood floors in salon

---

## Exclusions

---

- Personal effects
- Fishing gear
- A list can be provided upon inquiry

---

## Summary

True Grits is currently not being used much and is seriously for sale as a result. It was built custom up to the high standards of the Hendricks motorsports family and it is not your typical production boat. Engines have low hours and new risers have been installed. Paint is original 2002, Awlcraft 2000 and can be buffed and polished to get a few more years out of the paint. The aluminum on the tower looks great and is not pitted. Interior wood work is excellent! Carpet is getting ready for replacement.

---

## Exclusions

Owner's personal belongings.

---

## Disclaimer

The Company offers the details of this vessel or yacht in good faith but cannot guarantee or warrant the accuracy of this information nor warrant the condition of the vessel. A buyer should instruct his representatives, agents, or his surveyors, to investigate such details as the buyer desires validated. This vessel or yacht is offered subject to prior sale, price change, or withdrawal without notice.

# PHOTOS

**2002 60' Hatteras Convertible Profile**



**2002 60' Hatteras Convertible Profile**



**2002 60' Hatteras Convertible Main Salon**



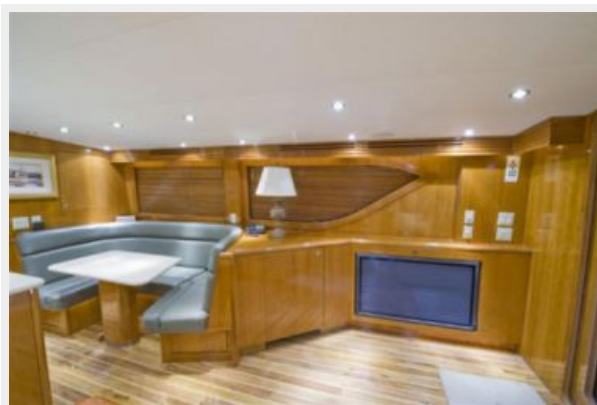
**2002 60' Hatteras Convertible Dining**



**2002 60' Hatteras Convertible Main Salon**



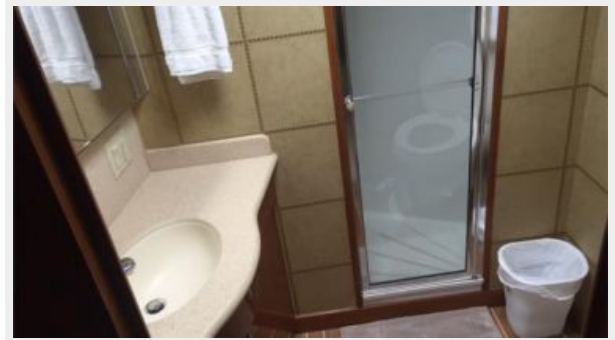
**2002 60' Hatteras Convertible Dining**



**2002 60' Hatteras Convertible Galley****2002 60' Hatteras Convertible Galley****2002 60' Hatteras Convertible Main Salon****2002 60' Hatteras Convertible appliances**

**2002 60' Hatteras Convertible Stairs****2002 60' Hatteras Convertible passageway****2002 60' Hatteras Convertible appliances****2002 60' Hatteras Convertible Master Stateroom**

**2002 60' Hatteras Convertible Master Stateroom****2002 60' Hatteras Convertible Master Stateroom****2002 60' Hatteras Convertible Master Bath****2002 60' Hatteras Convertible Master Head**

**2002 60' Hatteras Convertible Master Bath****2002 60' Hatteras Convertible Master Bath****2002 60' Hatteras Convertible VIP****2002 60' Hatteras Convertible VIP Stateroom****2002 60' Hatteras Convertible VIP Stateroom****2002 60' Hatteras Convertible Cabinets**

**2002 60' Hatteras Convertible****2002 60' Hatteras Convertible VIP Bath****2002 60' Hatteras Convertible Head****2002 60' Hatteras Convertible 3rd Stateroom/Crew Cabin**

**2002 60' Hatteras Convertible 3rd Stateroom****2002 60' Hatteras Convertible 3rd Bath w/ shower****2002 60' Hatteras Convertible Head****2002 60' Hatteras Convertible 3rd Bath w/ shower**

### 2002 60' Hatteras Convertible 3rd Bath w/ shower



### 2002 60' Hatteras Convertible Helm



### 2002 60' Hatteras Convertible Helm

### 2002 60' Hatteras Convertible Helm Station



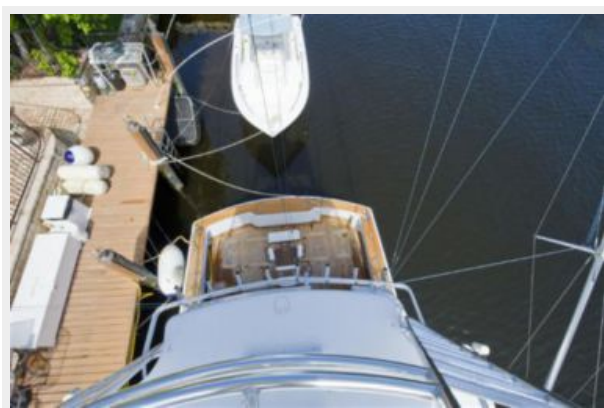
### 2002 60' Hatteras Convertible Flybridge

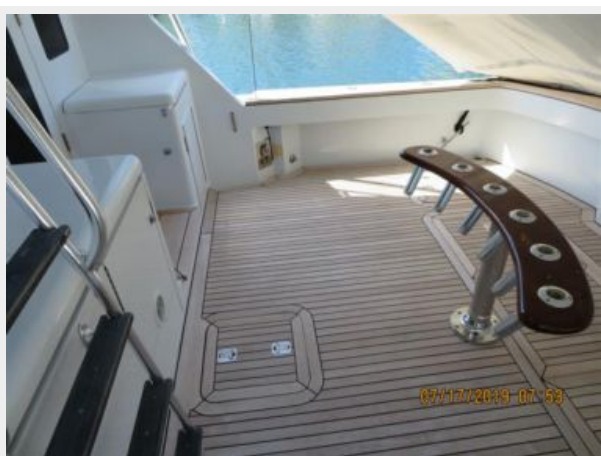
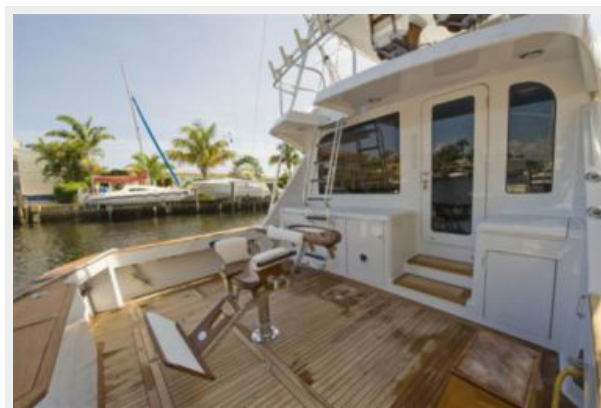


### 2002 60' Hatteras Convertible Flybridge



**2002 60' Hatteras Convertible Flybridge****2002 60' Hatteras Convertible Flybridge****2002 60' Hatteras Convertible Flybridge****2002 60' Hatteras Convertible Flybridge****2002 60' Hatteras Convertible Flybridge****2002 60' Hatteras Convertible Flybridge**

**2002 60' Hatteras Convertible Flybridge****2002 60' Hatteras Convertible Tower****2002 60' Hatteras Convertible Tower****2002 60' Hatteras Convertible Tower****2002 60' Hatteras Convertible Tower****2002 60' Hatteras Convertible Tower**

**2002 60' Hatteras Convertible Bow****2002 60' Hatteras Convertible Cockpit****2002 60' Hatteras Convertible Cockpit****2002 60' Hatteras Convertible Cockpit****2002 60' Hatteras Convertible Cockpit****2002 60' Hatteras Convertible Cockpit with Bluewater Fighting Chair**

**2002 60' Hatteras Convertible with Bluewater Fighting Chair**



**2002 60' Hatteras Convertible Aft Deck**



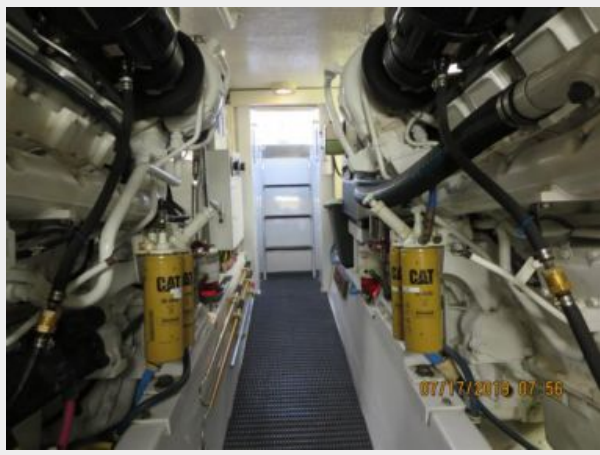
**2002 60' Hatteras Convertible Fish Box**

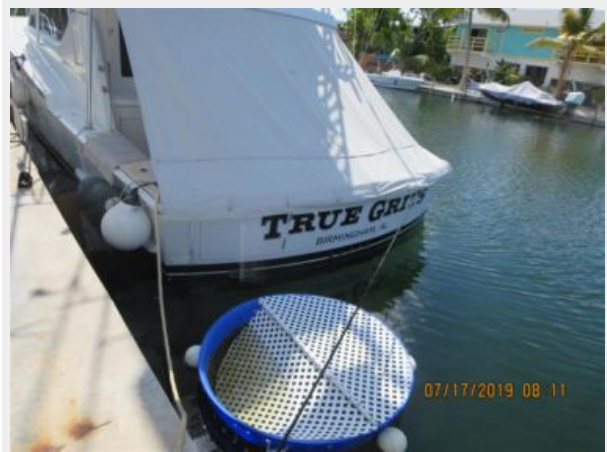


**2002 60' Hatteras Convertible**



**2002 60' Hatteras Convertible Cockpit****Engine room- new risers on main engines installed 7/19****Engine room- new risers on main engines installed 7/19****Engine room- new risers on main engines installed 7/19****Engine Room****2002 60' Hatteras Convertible Engine Room**

**2002 60' Hatteras Convertible Engine Room****Engine room- new risers on main engines installed 7/19****2002 60' Hatteras Convertible Engine Room    2002 60' Hatteras Convertible Engine Room**

**2002 60' Hatteras Convertible Panel****2002 60' Hatteras Convertible Engine Room****2002 60' Hatteras Convertible "TRUE GRITS"****2002 60' Hatteras Convertible**

## 2002 60' Hatteras Convertible Layout

### 2002 60' Hatteras Convertible



# CONTACTS

---

Andrey Shestakov, leading yacht broker of the sales department of Shestakov Yacht Sales Inc. Shestakov Yacht Sales Inc., the official representative of the Miami/Fort Lauderdale FL headquarters.

## Contact details

---

Email: **andrey@shestakovyachtsales.com**

Web: [shestakovyachtsales.com/en/](http://shestakovyachtsales.com/en/)

## Telephones

---

USA: **+1(954)274-4435**

## Office hours

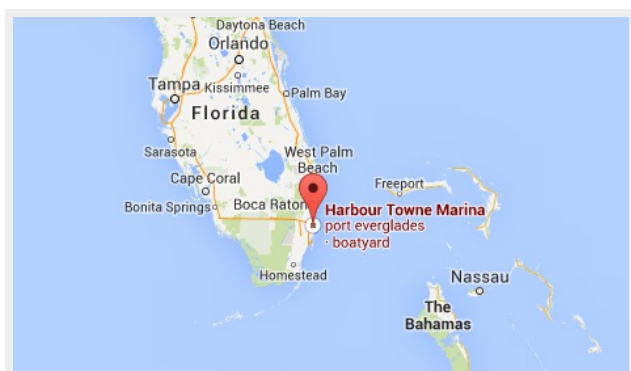
---

Monday – Saturday: **9:00 - 21:00 EDT**

Sunday: **closed**

## Address

---



Harbour Towne Marina, 850 NE 3rd St,  
STE 213, Dania, FL 33004