

VAY — SU MARINE



Builder: SU MARINE

Year Built: 2013

Model: Cruising Ketch

Price: PRICE ON APPLICATION

Location: Turkey

LOA: 132' 7" (40.40m)

Beam: 26' 3" (8.00m)

Min Draft: 0' 0" (0.00m)

Max Draft: 9' 11" (3.00m)

Cruise Speed: 13 Kts. (15 MPH)

Our experienced yacht broker, Andrey Shestakov, will help you choose and buy a yacht that best suits your needs **VAY — SU MARINE** from our catalogue. Presently, at Shestakov Yacht Sales Inc., we have a wide variety of yachts available on our sale's list. We also work in close contact with all the big yacht manufacturers from all over the world.

If you would like to buy a yacht **VAY — SU MARINE** or would like help answering any questions concerning purchasing, selling or chartering a yacht, please call **+1(954)274-4435**

TABLE OF CONTENTS

TABLE OF CONTENTS	2
SPECIFICATIONS	3
Overview	3
Basic Information	3
Dimensions	3
Speed, Capacities and Weight	3
Accommodations	4
Hull and Deck Information	4
Engine Information	4
DETAILED INFORMATION	5
Machinery	5
Deck Equipment	6
Safety	6
Navigation	7
Entertainment	7
Appliances	7
Toys	7
Exclusions	7
Disclaimer	7
PHOTOS	8
a01	8
CONTACTS	11
Contact details	11
Telephones	11
Office hours	11
Address	11

SPECIFICATIONS

Overview

S/Y VAY is a luxurious Turkish built ketch rigged sailing yacht with vast exterior deck spaces forward and aft. She provides excellent sailing in comfort with a fin keel, hydraulic assist and full sails. Built in 2013, she accommodates 10 guests in 5 cabins (1 Master, 2 VIP, 2 guest cabins).

A blend of tradition and modernity, VAY was designed in keeping with the comfortable layout of a Turkish "Gulet" motorsailer, whilst fully embracing modern systems and style. Her hull has efficient flat sections midships, a finer bow and fuller stern along with a relatively shallow semi-long keel providing stability for extended cruises under sail. The super strength mid-weight hull is an all laminated construction of mostly iroko, ensuring a safety and ease of movement. VAY's custom made aluminium spars with nitronic rod rigging, hydraulic furlers and rigging controls are all a far cry from traditional "caiques", paired with all stainless steel Lewmar winches powered by a central hydraulic system.

Basic Information

Category: Cruising Ketch

Model Year: 2013

Year Built: 2013

Country: Turkey

Cockpit: Yes

Dimensions

LOA: 132' 7" (40.40m)

Beam: 26' 3" (8.00m)

Min Draft: 0' 0" (0.00m)

Max Draft: 9' 11" (3.00m)

Speed, Capacities and Weight

Cruise Speed: 13 Kts. (15 MPH)

Displacement: 308647.1668 Pounds

Gross Tonnage: 175 Pounds

Water Capacity: 1363.12778832 Gallons

Holding Tank: 908.75185888 Gallons

Fuel Capacity: 2324.7140576 Gallons

Accommodations

Total Cabins: 5

Total Berths: 10

Sleeps: 10

Total Heads: 5

Crew Cabin: 3

Crew Berths: 6

Crew Sleeps: 6

Crew Heads: 2

Hull and Deck Information

Hull Material: Wood

Hull Designer: Tanju Kalaycioglu

Exterior Designer: Taka Yachts

Interior Designer: Su Marine

Engine Information

Engines: 2

Manufacturer: Scania

Model: DI12 60M

Engine Type: Inboard

DETAILED INFORMATION

Machinery

MAIN ENGINES

2x SCANIA DI12 60 M, 320 kW (430 hp) @ 2100 rpm

GEARBOX

TWINDISC 5135A, Ratio: 2.52 :1, Live PTO 593 Nm

PROPULSION SYSTEM

Stationary pitch propeller system 4-Bladed

GENERATORS

1 x 40 kVa, 1 x 27 kVa

ELECTRICAL SYSTEM

380 VAC 3 faz/220 VAC/24 VDC

HYDRAULIC SYSTEM

Lewmar hydraulic power pack (380VAC + PTO)

THRUSTER

Lewmar, 60 HP

STEERING SYSTEM

Data DDS1600-ESC 24/380V Electrohydraulic steering system

WATERMAKER

1x Idromar 2100 liters/day

SEWAGE SYSTEM

Techni Mini Biocon 2541liters / day

WC SYSTEM

Sealand Vacuflush

Deck Equipment

WINDLASS

2x Data DZC 2200 hydraulic vertical windlasses

ANCHORS

2x 180kg (397lb)

CHAIN

2x 137.5m (451ft) of 16mm

DOORS & HATCHES

Custom Bofor aluminum

PASSERELLE & DAVITS

Ezberci custom stainless steel hydraulic

SPARS

Dokar

STANDING RIG

Navtec discontinuous Nitronic rod rigging

RUNNING RIG

Dyneema

SAILS

Doyle

FURLERS

Bamar GFI 25 + GFI 35

Safety

LIFERAFTS

2x 8 kii RFD Surviva

FIREFIGHTING

Sea-Fire FM200 (engine room)

Consilium (engine room)

Navigation

Radar, GPS, VHF, chartplotter, autopilot, depth&speed indicators

Entertainment

TV, DVD, Bose system in all cabins and saloon, satellite, Wi-Fi

Appliances

Gaggenau and electrolux

Toys

Water ski, mono ski, snorkelling equipment, basic fishing equipment

Exclusions

Owner's personal belongings.

Disclaimer

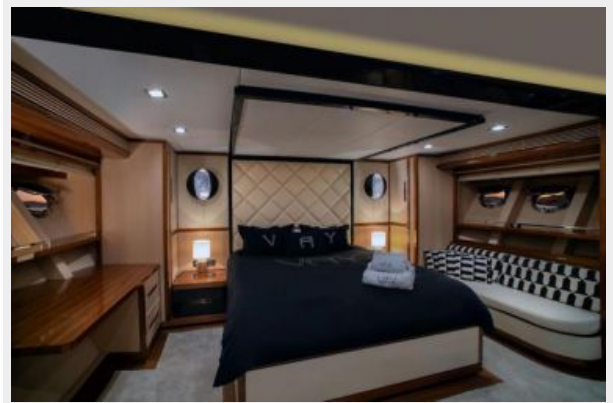
The Company offers the details of this vessel or yacht in good faith but cannot guarantee or warrant the accuracy of this information nor warrant the condition of the vessel. A buyer should instruct his representatives, agents, or his surveyors, to investigate such details as the buyer desires validated. This vessel or yacht is offered subject to prior sale, price change, or withdrawal without notice.

PHOTOS



a01







CONTACTS

Andrey Shestakov, leading yacht broker of the sales department of Shestakov Yacht Sales Inc. Shestakov Yacht Sales Inc., the official representative of the Miami/Fort Lauderdale FL headquarters.

Contact details

Email: andrey@shestakovyachtsales.com

Web: shestakovyachtsales.com/en/

Telephones

USA: +1(954)274-4435

Office hours

Monday – Saturday: **9:00 - 21:00** EDT

Sunday: **closed**

Address



Harbour Towne Marina, 850 NE 3rd St,
STE 213, Dania, FL 33004