

LA BELLA VITA — NEPTUNUS



Builder: NEPTUNUS

Year Built: 2001

Model: Motor Yacht

Price: PRICE ON APPLICATION

Location: United States

LOA: 75' 0" (22.86m)

Beam: 19' 6" (5.94m)

Max Draft: 4' 8" (1.42m)

Cruise Speed: 29 Kts. (33 MPH)

Max Speed: 35 Kts. (40 MPH)

Our experienced yacht broker, Andrey Shestakov, will help you choose and buy a yacht that best suits your needs **La Bella Vita — NEPTUNUS** from our catalogue. Presently, at Shestakov Yacht Sales Inc., we have a wide variety of yachts available on our sale's list. We also work in close contact with all the big yacht manufacturers from all over the world.

If you would like to buy a yacht **La Bella Vita — NEPTUNUS** or would like help answering any questions concerning purchasing, selling or chartering a yacht, please call **+1(954)274-4435**

TABLE OF CONTENTS

TABLE OF CONTENTS	2
SPECIFICATIONS	4
Overview	4
Basic Information	4
Dimensions	4
Speed, Capacities and Weight	5
Accommodations	5
Hull and Deck Information	5
Engine Information	5
DETAILED INFORMATION	6
Boat Highlights	6
2017/2018 Updates	6
Water Test Experience	6
Vessel Walkthrough	7
Salons	8
Stateroom accommodations and crew	8
Helm Station	9
Helm Electronics	9
Electrical Equipment	9
Engine Room	10
Deck and Hull	10
Disclaimer	10
Exclusions	10
Disclaimer	11
PHOTOS	12
CONTACTS	18
Contact details	18
Telephones	18

Office hours	18
Address	18

SPECIFICATIONS

Overview

It can be said "James Bonds 007" Super Yachts, are very, very sexy.

Millennium Super Yachts began in the 80's with a triad of very powerful Megayachts whose names conjure the essence of opulence and responsive speed- "Octopussy", "Moonraker" and "Thunderball". They were some of the fastest super yachts in the world. Millennium yachts were designed by John Staluppi, as were the rest of the James Bond 007 super yachts born in Holland. "La Belle Vita" wasn't a 007 Bond Super Yacht in the Bond movies but all the love, quality and speed went into building this very special Millennium Super Yacht in Holland.

- Brand new Listing, Seller will consider trades
- See Video, See personal Electronic Interaction Vessel Walk Thru. All Pictures/Video created in April 2019
- Copy this Link for 3D Tour of Yacht,
- 75' of Bristle Hull shine and modern updated Yacht interior
- 1,350hp MTU V2000 Diesel engines (2,700HP TOTAL)
- Very FAST, Sleek and a very Special... Super Yacht
- Updated Garmin Electronics
- 3 Beautiful EnSuite Staterooms plus Crew Quarters
- Spotless "White" Awlgrip Engine Room

Basic Information

Category: Motor Yacht

Model Year: 2001

Year Built: 2001

Country: United States

Dimensions

LOA: 75' 0" (22.86m)

Beam: 19' 6" (5.94m)

Max Draft: 4' 8" (1.42m)

Speed, Capacities and Weight

Cruise Speed: 29 Kts. (33 MPH)

Max Speed: 35 Kts. (40 MPH)

Displacement: 92000 Pounds

Accommodations

Total Cabins: 3

Total Berths: 5

Total Heads: 4

Hull and Deck Information

Hull Material: Fiberglass

Engine Information

Engines: 2

Manufacturer: MTU

Model: M90

Engine Type: Inboard

Fuel Type: Diesel

DETAILED INFORMATION

Boat Highlights

La Bella Vita was custom built by two of the most experienced Mega Yachtsman in the world, John Staluppi and John Rosatti. They chose to build this superyacht, with a Dutch pedigree and it was constructed by the famous Neptunus shipyard in Holland. This yacht was built for the US market and then shipped to Florida where it was custom fitted by Millennium yachts at the Denison Ship Yard.

She is out-fitted to the industry's highest standards by her owners. No expense was spared in this build and re-fitting. This amazing yacht was painted and updated in 2014 and has continually been updated through 2018.

Walking up the dock towards La Bella Vita you immediately realize that she is a very special Super Yacht. Beautiful Hull shine and updated condition make her very sleek and sexy! Spotless engine room. She looks like a much newer yacht that has been loved and expertly maintained by her owners.

Seller states that La Belle Vita is in turn-key condition and ready to go anywhere anytime.

2017/2018 Updates

- Engine Services late 2018
- Hull Painted 2014
- New berth Mattresses 2017
- Amtico Synthetic Wood Floors 2017
- New Carpet, New Wall Coverings 2018
- Custom Wood Window Blinds
- New Leather grey Couch and swivel Leather Chair seating
- Replaced all Smart TV's
- Bottom Paint 2018
- Props balanced 2018
- Cockpit seating replaced 2018
- Yacht waxed twice per year

Water Test Experience

My first voyage was a couple of weeks ago while shooting the video on La Bella Vita that hopefully, you have already watched.

My first impression of her is how solid she is built (Great Bones) and

her magnificent quality throughout this Holland-built Super Yacht. We were heading offshore and the Captain barely pushed the throttles forward and I was expecting the bow to pop up high to plane BUT she surprised us all with virtually no noticeable bow rise.

She went from 8 knots right to plane at 13.5 knots and felt extremely comfortable at that speed. WOW... planning at 13 knots, no engine sound... this experience felt very different than other yachts of her size.

The next moment after cruising at 13knots the Captain smiled and pushed harder on the controls and we were running at 25knots in 2 to 4 chop. Again, my impression was impressive... this yacht was cruising effortlessly in total silence at 25knots. No bow rise, excellent visibility, and still in near silence. The MTU's were pushing this yacht without even trying, THANK YOU Holland Builders and MTU! You Got This build, RIGHT!

I kept looking at the GPS confirming our speeds because this was a very unique water experience for me with over 10,000 hours on the water and a lifetime boating since 1961 when I started yachting with family.

Still very much amazed I looked around the salon and found 8 other people all smiling in disbelief at how cool... this ride was going. We stayed at 25knots for 10 minutes or so...then!

And YES, the Captain inched the throttles up even further and we were easily moving along at 32knots and that is very fast for a 75' Super Yacht, the 1350hp MTU M2000's were beginning to start to sing their Turbo song of SPEED!

We never went to wide-open throttle, but I will tell you that... the MAGIC was happening for me and our guests to be in a 75' Super Yacht running at these speeds so effortlessly in luxury and comfort. You have to try this experience because you will never forget it in your lifetime!

This water experience is burned into my lifetime of water memories! Not much makes me this excited in life. Thank you, Neptunus and Millennium yachts for making me feel a little like " James Bond" for a day.

Vessel Walkthrough

Approaching La Bella Vita from the dock, you board at her large swim platform.

Walking up the built-in steps on either side of the yacht, you enter into a smartly laid-out updated aft deck for socializing and entertaining many guests. Partial Extended Bimini for sun protection. Then you have a U-shaped sitting area on the Settee with panoramic views around the yacht.

Passing through the Large Marine Chrome sliding glass doors opens up the Upper Salon

and Helm area. To port, is a newly updated soft gray Leather Couch. Across from the couch is the Entertainment center and 60" Flat Screen. Moving forward across from the helm area is a nice size raised settee with great panoramic views around the yacht. Across to starboard are the double-wide helm seat and helm navigation station. Excellent visibility from here as well.

Beautiful Amtico fine walnut wood deck and a huge "Moon Roof" above make this area as good as it gets. This is truly one of the nicest areas onboard this well-built rare Dutch yacht. All the window treatments have been updated to give you all the elegance and penthouse feeling while on board.

Now, let's take a couple of small steps forward and enter into the updated Gourmet Galley, Breakfast Bar, and formal Dining area. This lower deck level is centralized and has access to all the ensuite staterooms as well. Galley to port with the Breakfast bar. To starboard is the large Formal Dining Settee. Nice size portals give us plenty of natural lighting. Moving all the way forward is the VIP Ensuite Stateroom. Amid Ship is the 3rd Ensuite stateroom with an office. Aft is the companionway to our Grand Master Ensuite Stateroom.

Crew Quarters and Engine Room access are all the way aft and have a heavy watertight door for access. Another quality "commercial" feature of this Millennium Yacht.

Salons

Upper Salon is on the main deck level and hosts the epicenter of this luxurious layout. Big windows allow for panoramic views and great entertainment inside and out. With the custom Stainless Steel sliding glass windows open, you have an expansive space for having fun. Open the large Sun Roof, and you think that you are in a metropolitan Penthouse. Just add some speed to the equation and "Life is Really Good."

The lower Salon deck sports a Gourmet Galley with all updated appliances for preparing the finest meals. There is lots of great counter space here, and a three stool Breakfast Bar tops this space off for lots of good memories. Across from the Galley is the Formal Dining Wrap around Settee with lots of lounging space for luxurious experiences. All Amtico walnut floors for the warm yacht ambiance to sweep you off to the Penthouse state of mind.

This salon also leads you to the Ensuite Staterooms for easy access.

Stateroom accommodations and crew

Master Stateroom is an amidship and is a Full Beamwidth with lots of room for the King and Queen. Centerline King size Berth, separate sitting room area, super Vanity, and lots

of great storage abound. Big hanging lockers for the extra storage for long trips.

Upscale appointments, updates throughout, and Elegance-Abound here. You see the Holland build come out in all the staterooms.

Full-size head, Large Jacuzzi Tub, and shower make this area very spacious. Extra storage and counter space.

The Guest VIP, second Ensuite Stateroom forward, is another elegant place to rest.

Helm Station

The Helm area has great visibility around the yacht through the large windows. Double Helm Seat for helmsman and Navigator to sit together. Updated Electronics with all the tools to navigate anywhere you want.

Above the helm are the electric sunroof and Amtico walnut wood floors to bring all the elegance and warmth into this beautiful yacht.

Helm Electronics

- Updated Large Screen Garmin 6215 Plotter, Radar, and Sonar
- Updated Garmin Plotter 541
- Garmin Digital Depth, Speed
- Garmin Digital Wind Speed
- Autohelm Auto Pilot, Simrad AP22
- MTU Digital Engine monitoring Screens
- ICOM VHF
- Standard Horizon VHF
- Ritchie 4.5 Compass
- Fuel Management System
- Trim Tabs
- Hydraulic Steering
- Rudder Position Indicator

Electrical Equipment

- Two 50 Amp Shore power cords
- Glendenning Cablemaster Shore power cable auto retrieve
- Generator Westerbeke 25KW (Hours 3028) Sound Sheild
- Generator serviced in 2018
- Phase 3 Inverter

- 60HTZ US Electrical system
- Electric Windlass
- Quicksilver Galvanic Isolator

Engine Room

This engine room is like new inside and outside. The bilges are spotless, bright white engine room that makes this space feel like an operating room—a full Commercial engine room with a water-tight steel door. Everything is easily accessible, and full engine room gauges to keep a close eye on all of her mechanical engine vitals.

- Twin Marine MTU V-12 Engines, 1350hp, 2700hp Total
- V-Drives, ZF Marine Gears, model BW190A, 2.448/1 Ratio
- 3" Prop Shafts
- Two outboard Fuel tanks each 658Gallons, One Centerline fuel Tank 921Gallons
- Dual per engine Racor 75/1000max Fuel Filters
- Water Tight Steel Engine Room Door
- 3 AC Chilled water Chiller System, 24,000BTU Compressors
- Lube Oil Transfer Pumps
- Fuel Transfer Pumps

Deck and Hull

- Painted Hull 2014
- Oversized S/S Bollard Style 14" Mooring Cleats
- Deep V planning Hull with shallow prop pockets
- Oversized welded stainless steel bow rails
- Muir V3500 24 volt Electric Windlass
- Simpson Lawrence Delta Plow 40G Anchor
- Black mesh windshield Covers

Disclaimer

The Company offers the details of this vessel in good faith but cannot guarantee or warrant the accuracy of this information nor warrant the condition of the vessel. A buyer should instruct his agents, or his surveyors, to investigate such details as the buyer desires validated. Hours listed may vary from actual hours due to recent use. Purchaser is encouraged to verify hours prior to purchase. This vessel is offered subject to prior sale, price change, or withdrawal without notice.

Exclusions

Owner's personal belongings.

Disclaimer

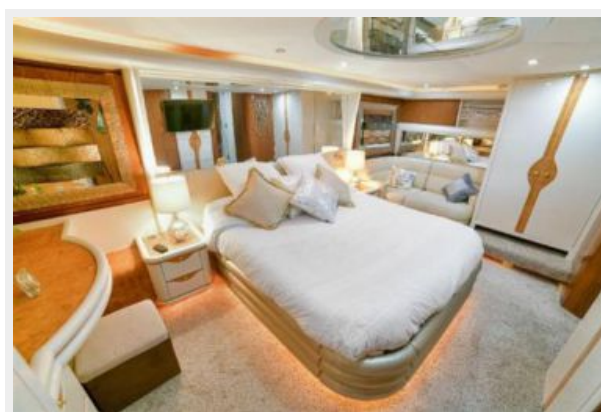
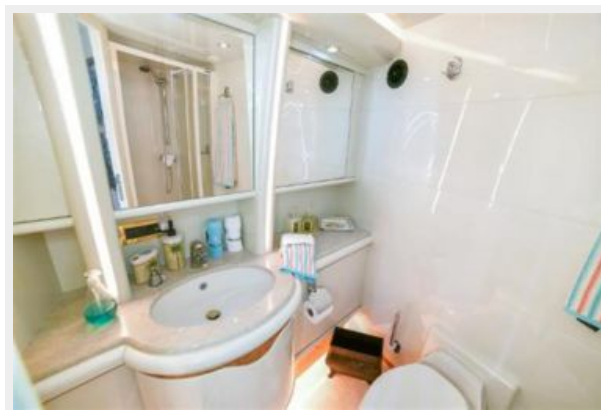
The Company offers the details of this vessel or yacht in good faith but cannot guarantee or warrant the accuracy of this information nor warrant the condition of the vessel. A buyer should instruct his representatives, agents, or his surveyors, to investigate such details as the buyer desires validated. This vessel or yacht is offered subject to prior sale, price change, or withdrawal without notice.

PHOTOS













CONTACTS

Andrey Shestakov, leading yacht broker of the sales department of Shestakov Yacht Sales Inc. Shestakov Yacht Sales Inc., the official representative of the Miami/Fort Lauderdale FL headquarters.

Contact details

Email:
andrey@shestakovyachtsales.com

Web: shestakovyachtsales.com/en/

Telephones

USA: **+1(954)274-4435**

Office hours

Monday – Saturday: **9:00 - 21:00 EDT**

Sunday: **closed**

Address



Harbour Towne Marina, 850 NE 3rd St,
STE 213, Dania, FL 33004