

NO DISTRACTIONS — SEA RAY



Builder: SEA RAY

Year Built: 2005

Model: Motor Yacht

Price: PRICE ON APPLICATION

Location: United States

LOA: 52' 3" (15.93m)

Beam: 15' 3" (4.65m)

Max Draft: 4' 1" (1.24m)

Our experienced yacht broker, Andrey Shestakov, will help you choose and buy a yacht that best suits your needs **NO DISTRACTIONS — SEA RAY** from our catalogue. Presently, at Shestakov Yacht Sales Inc., we have a wide variety of yachts available on our sale's list. We also work in close contact with all the big yacht manufacturers from all over the world.

If you would like to buy a yacht **NO DISTRACTIONS — SEA RAY** or would like help answering any questions concerning purchasing, selling or chartering a yacht, please call **+1(954)274-4435**

TABLE OF CONTENTS

TABLE OF CONTENTS	2
SPECIFICATIONS	5
Overview	5
Basic Information	6
Dimensions	6
Speed, Capacities and Weight	6
Accommodations	6
Hull and Deck Information	6
Engine Information	7
DETAILED INFORMATION	8
Vessel Walkthrough	8
Exclusions	9
Disclaimer	9
PHOTOS	10
Port profile	10
STBD bow profile	10
STBD quarter profile	10
Port quarter profile	10
Flybridge	10
Helm station	10
Salon	11
Dinette	11
Galley	11
STBD profile 2	11
Stern	11
Cockpit	11
Steps to the flybridge	12
Entry to the salon	12

Side deck	12
Entry to the salon (with sliding door open)	12
Flybridge view 2	13
Helm	13
Helm view 2	13
Helm station looking aft	13
Captain's chair	13
Raymarine E120	13
STBD bow profile 2	14
Salon looking forward	14
Stbd salon	14
Port salon	14
Sink in the galley	14
Dinette view 2	14
Panasonic microwave	15
Kenyon stove top	15
Distribution panel	15
Steps to the staterooms	15
Master stateroom	16
Master stateroom view 2	16
Master head	16
Master head with shower	16
Master vanity sink	16
VIP stateroom	16
Guest vanity and shower	17
TV in the VIP stateroom	17
Guest shower	17
Guest stateroom	17
Port profile 2	18

Engine room	18
Engine room 2	18
Engine room 3	18
Engine room 4	18
Engine room 5	18
Onan genset	19
Bow profile	19
Port bow profile (in slip)	19
STBD bow profile (in slip)	19
Norcold refrigerator at the bridge	19
Sink at the bridge	19
JL audio speaker in cockpit	20
STBD profile 3	20
SmartCraft	20
STBD bow profile 3	20
STBD profile 4	20
CONTACTS	21
Contact details	21
Telephones	21
Office hours	21
Address	21

SPECIFICATIONS

Overview

We are delighted to offer this 500 Sedan Bridge to the market. She was sold brand new in Nashville, TN and lived on the TN River for the early years of her life. She then ventured to the west coast of Florida. Her second owner brought her back to freshwater in August 2017 where she has lived since.

The blue hull shines, her enclosure is in great shape, and we believe her engine services are up to date! This vessel has received excellent care throughout her life and it shows in her condition. Her current owner thoroughly enjoys running this boat with his family and friends. She is powered by twin 640 HP Cummins QSM-11 engines, equipped with bow thruster for easy docking. The visibility from the helm is truly something to be experienced.

NO DISTRACTIONS features include (but are not limited to):

- Twin QSM-11 Cummins (640hp each)
- Onan 13.5kW genset
- Bridge air conditioning
- Bow thruster
- Davit
- Raymarine VHF radio
- Raymarine ST8001
- (2) Raymarine E120W
- Clarion stereo and CD changer
- (1) 40-inch Samsung TV in the salon, (3) 12-inch Zenith TV with built-in DVD (all staterooms)
- Auto tracking sat TV
- Bose surround system
- 2-burner electric stove Kenyon
- Keurig coffee maker
- (1) Promariner Pro Mar 25 amp
- (2) Intelli-Power Marine chargers 50 amp
- Glendinning Cablemaster 50 amp shore power with remote control
- Suncor Stainless Steel Anchor
- Lofrans windlass with foot controls and helm controlled switch
- Two full heads (VacuFlush) with separate showers
- Central vacuum system

Basic Information

Category: Motor Yacht

Sub Category: Flybridge

Model Year: 2005

Year Built: 2005

Country: United States

Coast Guard #: 1177505

Fly Bridge: Yes

Dimensions

LOA: 52' 3" (15.93m)

Beam: 15' 3" (4.65m)

Max Draft: 4' 1" (1.24m)

Speed, Capacities and Weight

Displacement: 36700 Pounds

Water Capacity: 140 Gallons

Holding Tank: 68 Gallons

Fuel Capacity: 500 Gallons

Accommodations

Total Cabins: 3

Total Berths: 4

Sleeps: 6

Total Heads: 2

Hull and Deck Information

Hull Material: Fiberglass

Hull Color: Blue

Engine Information

Engines: 2

Manufacturer: Cummins

Model: QSM-11

Engine Type: Inboard

Fuel Type: Diesel

DETAILED INFORMATION

Vessel Walkthrough

The integral swim platform serves as the main point of access for the 500 Sedan Bridge. The port side transom door makes way into the spacious self-draining cockpit where you will find an aft bench seat with fiberglass storage base. Engine room access is gained via a hatch in the cockpit floor. From the cockpit, there are molded-in steps to starboard and port that give access to the bow via the side decks. The bridge is accessed via port side of the cockpit. The davit stores in the locker just aft of the cockpit bench seat. Up to the flybridge, the helm is enclosed with a fiberglass hardtop and clear- polycarbonate and vinyl enclosure. The bridge is equipped with reverse-cycle heat and air conditioning, which creates an all-weather helm when the access hatch to the bridge is closed. The control station has captain and companion chairs with flip up thigh rise bolsters. The console is equipped with the full-scale electronics package that includes a Ray Marine ST8001 autopilot, (2) units of Raymarine E120W, Raymarine VHF radio, Clarion stereo, and a lot more. A curved seating area with a table is forward of the helm. Port forward is the wet bar that has a faucet, sink, and a refrigerator. Back to the cockpit, large stainless steel trimmed sliding glass doors take you into the spacious main salon. The large windows give the room natural lighting and an open air feeling where beautiful cherry wood interior and light brown carpeting invite you in. To port is an ultra leather curved sofa with movable ottomans and a table while to the STBD is a matching ultra leather sofa. The entertainment center is located STBD aft, which features a 40" flat screen Samsung TV with DVD player. Forward to port, two steps up is the luxuriously appointed dining area that has an L-shaped ultra leather dinette with high gloss wood dining table, wooden flooring, and an aft cabinet with pull-out storage and acrylic top. To STBD, across from the dinette is the full service galley that features beautiful wood flooring, Corian countertops, a stainless steel sink with single lever faucet, cherry wood cabinets and drawers, a Subzero refrigerator and freezer, coffeemaker, microwave/convection oven, and a 2-burner Kenyon electric stove. Moving forward, a few steps down, you encounter the cabin entry doors to the port and STBD staterooms. To port is the VIP stateroom that features a double bed with innerspring mattress and storage below, lamps on each side of the bed, drawer storage, wall accent mirrors, skylight, and entertainment center equipped with 15" LCD flat screen TV with DVD player. There is a private access into the day head from this stateroom. To STBD is the guest stateroom outfitted with upper and lower bunks, hanging lockers with lighting, upper cabinet storage, rectangular skylight, and entertainment center equipped with a wall-mounted 12-inch Zenith TV with built-in DVD. The day head has two entry doors (one from the hallway and the other, private access from the VIP stateroom). This head is complete with VacuFlush head, solid surface vanity top with stainless steel sink and faucet, mirrored medicine cabinet, and a separate shower area with seat, adjustable shower wand, and bifold door. The elegantly designed master stateroom is located forward in the bow with a full-size island berth with innerspring mattress and storage below, lamps on each side of the head board, full-length mirror, mirrored rope locker bulkhead, gunwale shelves, an entertainment center equipped with a 15" LCD flat screen TV with DVD player, and its own private head. The master stateroom head has VacuFlush head, towel cabinet storage, granite top vanity with stainless steel sink and faucet,

mirrored medicine cabinet, and a separate shower area with seat, adjustable shower wand, and circular acrylic door.

Exclusions

Owner's personal belongings.

Disclaimer

The Company offers the details of this vessel or yacht in good faith but cannot guarantee or warrant the accuracy of this information nor warrant the condition of the vessel. A buyer should instruct his representatives, agents, or his surveyors, to investigate such details as the buyer desires validated. This vessel or yacht is offered subject to prior sale, price change, or withdrawal without notice.

PHOTOS

Port profile



STBD bow profile



STBD quarter profile



Port quarter profile



Flybridge



Helm station



Salon



Dinette



Galley



STBD profile 2



Stern



Cockpit



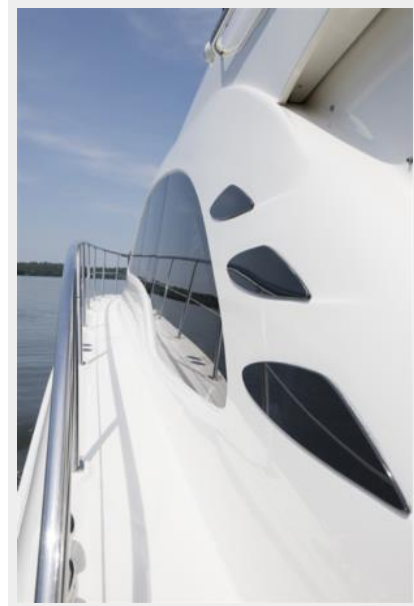
Steps to the flybridge



Entry to the salon



Side deck



Entry to the salon (with sliding door open)



Flybridge view 2



Helm



Helm view 2



Helm station looking aft



Captain's chair



Raymarine E120



STBD bow profile 2



Salon looking forward



Stbd salon



Port salon



Dinette view 2



Sink in the galley



Kenyon stove top



Panasonic microwave



Distribution panel



Steps to the staterooms



Master stateroom



Master stateroom view 2



Master head



Master head with shower



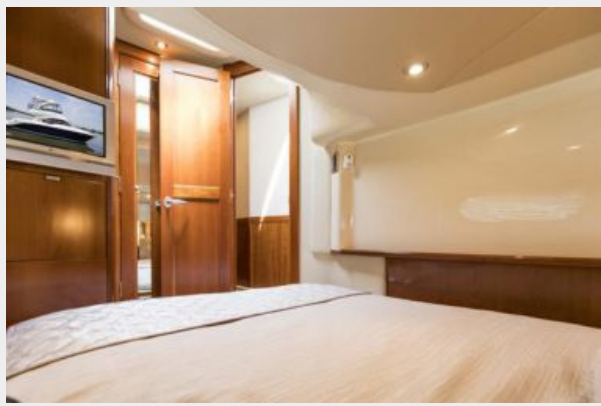
Master vanity sink



VIP stateroom



TV in the VIP stateroom



Guest vanity and shower



Guest shower



Guest stateroom



Port profile 2



Engine room



Engine room 2



Engine room 3



Engine room 4



Engine room 5



Onan genset



Bow profile



Port bow profile (in slip)



STBD bow profile (in slip)



Sink at the bridge



Norcold refrigerator at the bridge



JL audio speaker in cockpit



STBD profile 3



SmartCraft



STBD bow profile 3



STBD profile 4



CONTACTS

Andrey Shestakov, leading yacht broker of the sales department of Shestakov Yacht Sales Inc. Shestakov Yacht Sales Inc., the official representative of the Miami/Fort Lauderdale FL headquarters.

Contact details

Email: andrey@shestakovyachtsales.com

Web: shestakovyachtsales.com/en/

Telephones

USA: +1(954)274-4435

Office hours

Monday – Saturday: **9:00 - 21:00** EDT

Sunday: **closed**

Address



Harbour Towne Marina, 850 NE 3rd St,
STE 213, Dania, FL 33004