

NO DISTRACTIONS — SEA RAY



Судостроитель: SEA RAY

Год постройки: 2005

Модель: Моторная яхта

Цена: **ЦЕНА ЯХТЫ ПО ЗАПРОСУ**

Местонахождение: United States

Длина общая: 52' 3" (15.93m)

Ширина: 15' 3" (4.65m)

Макс. осадка: 4' 1" (1.24m)

Купить **NO DISTRACTIONS — SEA RAY** а также выбрать подходящую вам яхту из нашего каталога яхт вам поможет опытный яхтенный брокер Андрей Шестаков. На сегодняшний день компания **Shestakov Yacht Sales Inc.** имеет большое количество яхт в собственном списке продаж, а также тесно сотрудничает со всеми крупными яхтенными производителями по всему миру.

Для того чтобы купить яхту **NO DISTRACTIONS — SEA RAY** а также проконсультироваться по любому вопросу связанному с покупкой, продажей, чартером яхт позвоните по телефону **+7(918)465-66-44**.

ОГЛАВЛЕНИЕ

| | |
|-------------------------------|----|
| ОГЛАВЛЕНИЕ | 2 |
| ХАРАКТЕРИСТИКИ | 5 |
| Обзор | 5 |
| Основная информация | 6 |
| Размеры | 6 |
| Скорость, вместимость и масса | 6 |
| Размещение | 6 |
| Корпус и палуба | 6 |
| Информация о двигателе | 7 |
| ПОДРОБНОЕ ОПИСАНИЕ | 8 |
| Vessel Walkthrough | 8 |
| Исключения | 9 |
| Отказ от ответственности | 9 |
| ФОТОГРАФИИ | 10 |
| Port profile | 10 |
| STBD bow profile | 10 |
| STBD quarter profile | 10 |
| Port quarter profile | 10 |
| Flybridge | 10 |
| Helm station | 10 |
| Salon | 11 |
| Dinette | 11 |
| Galley | 11 |
| STBD profile 2 | 11 |
| Stern | 11 |
| Cockpit | 11 |
| Steps to the flybridge | 12 |
| Entry to the salon | 12 |

| | |
|---|----|
| Side deck | 12 |
| Entry to the salon (with sliding door open) | 12 |
| Flybridge view 2 | 13 |
| Helm | 13 |
| Helm view 2 | 13 |
| Helm station looking aft | 13 |
| Captain's chair | 13 |
| Raymarine E120 | 13 |
| STBD bow profile 2 | 14 |
| Salon looking forward | 14 |
| Stbd salon | 14 |
| Port salon | 14 |
| Sink in the galley | 14 |
| Dinette view 2 | 14 |
| Panasonic microwave | 15 |
| Kenyon stove top | 15 |
| Distribution panel | 15 |
| Steps to the staterooms | 15 |
| Master stateroom | 16 |
| Master stateroom view 2 | 16 |
| Master head | 16 |
| Master head with shower | 16 |
| Master vanity sink | 16 |
| VIP stateroom | 16 |
| Guest vanity and shower | 17 |
| TV in the VIP stateroom | 17 |
| Guest shower | 17 |
| Guest stateroom | 17 |
| Port profile 2 | 18 |

| | |
|------------------------------------|-----------|
| Engine room | 18 |
| Engine room 2 | 18 |
| Engine room 3 | 18 |
| Engine room 4 | 18 |
| Engine room 5 | 18 |
| Onan genset | 19 |
| Bow profile | 19 |
| Port bow profile (in slip) | 19 |
| STBD bow profile (in slip) | 19 |
| Norcold refrigerator at the bridge | 19 |
| Sink at the bridge | 19 |
| JL audio speaker in cockpit | 20 |
| STBD profile 3 | 20 |
| SmartCraft | 20 |
| STBD bow profile 3 | 20 |
| STBD profile 4 | 20 |
| КОНТАКТЫ | 21 |
| Контактная информация | 21 |
| Телефоны | 21 |
| Время работы | 21 |
| Адрес | 21 |

ХАРАКТЕРИСТИКИ

Обзор

We are delighted to offer this 500 Sedan Bridge to the market. She was sold brand new in Nashville, TN and lived on the TN River for the early years of her life. She then ventured to the west coast of Florida. Her second owner brought her back to freshwater in August 2017 where she has lived since.

The blue hull shines, her enclosure is in great shape, and we believe her engine services are up to date! This vessel has received excellent care throughout her life and it shows in her condition. Her current owner thoroughly enjoys running this boat with his family and friends. She is powered by twin 640 HP Cummins QSM-11 engines, equipped with bow thruster for easy docking. The visibility from the helm is truly something to be experienced.

NO DISTRACTIONS features include (but are not limited to):

- Twin QSM-11 Cummins (640hp each)
- Onan 13.5kW genset
- Bridge air conditioning
- Bow thruster
- Davit
- Raymarine VHF radio
- Raymarine ST8001
- (2) Raymarine E120W
- Clarion stereo and CD changer
- (1) 40-inch Samsung TV in the salon, (3) 12-inch Zenith TV with built-in DVD (all staterooms)
- Auto tracking sat TV
- Bose surround system
- 2-burner electric stove Kenyon
- Keurig coffee maker
- (1) Promariner Pro Mar 25 amp
- (2) Intelli-Power Marine chargers 50 amp
- Glendinning Cablemaster 50 amp shore power with remote control
- Suncor Stainless Steel Anchor
- Lofrans windlass with foot controls and helm controlled switch
- Two full heads (VacuFlush) with separate showers
- Central vacuum system

Основная информация

Тип судна: Моторная яхта

Подкатегория: Flybridge

Модельный год: 2005

Год постройки: 2005

Страна: United States

Номер регистрации в береговой
охране: 1177505

Открытая палуба мостика: Да

Размеры

Длина общая: 52' 3" (15.93m)

Ширина: 15' 3" (4.65m)

Макс. осадка: 4' 1" (1.24m)

Скорость, вместимость и масса

Водоизмещение: 36700 Pounds

Вместимость воды: 140 Gallons

Вместимость сточного бака: 68 Gallons

Объем топливного бака: 500 Gallons

Размещение

Всего кают: 3

Всего коек: 4

Спальные места: 6

Всего ком. состава: 2

Корпус и палуба

Материал корпуса: Fiberglass

Цвет корпуса: Blue

Информация о двигателе

Двигатели: 2

Производитель: Cummins

Модель: QSM-11

Тип двигателя: Inboard

Тип топлива: Diesel

ПОДРОБНОЕ ОПИСАНИЕ

Vessel Walkthrough

The integral swim platform serves as the main point of access for the 500 Sedan Bridge. The port side transom door makes way into the spacious self-draining cockpit where you will find an aft bench seat with fiberglass storage base. Engine room access is gained via a hatch in the cockpit floor. From the cockpit, there are molded-in steps to starboard and port that give access to the bow via the side decks. The bridge is accessed via port side of the cockpit. The davit stores in the locker just aft of the cockpit bench seat. Up to the flybridge, the helm is enclosed with a fiberglass hardtop and clear- polycarbonate and vinyl enclosure. The bridge is equipped with reverse-cycle heat and air conditioning, which creates an all-weather helm when the access hatch to the bridge is closed. The control station has captain and companion chairs with flip up thigh rise bolsters. The console is equipped with the full-scale electronics package that includes a Ray Marine ST8001 autopilot, (2) units of Raymarine E120W, Raymarine VHF radio, Clarion stereo, and a lot more. A curved seating area with a table is forward of the helm. Port forward is the wet bar that has a faucet, sink, and a refrigerator. Back to the cockpit, large stainless steel trimmed sliding glass doors take you into the spacious main salon. The large windows give the room natural lighting and an open air feeling where beautiful cherry wood interior and light brown carpeting invite you in. To port is an ultra leather curved sofa with movable ottomans and a table while to the STBD is a matching ultra leather sofa. The entertainment center is located STBD aft, which features a 40" flat screen Samsung TV with DVD player. Forward to port, two steps up is the luxuriously appointed dining area that has an L-shaped ultra leather dinette with high gloss wood dining table, wooden flooring, and an aft cabinet with pull-out storage and acrylic top. To STBD, across from the dinette is the full service galley that features beautiful wood flooring, Corian countertops, a stainless steel sink with single lever faucet, cherry wood cabinets and drawers, a Subzero refrigerator and freezer, coffeemaker, microwave/convection oven, and a 2-burner Kenyon electric stove. Moving forward, a few steps down, you encounter the cabin entry doors to the port and STBD staterooms. To port is the VIP stateroom that features a double bed with innerspring mattress and storage below, lamps on each side of the bed, drawer storage, wall accent mirrors, skylight, and entertainment center equipped with 15" LCD flat screen TV with DVD player. There is a private access into the day head from this stateroom. To STBD is the guest stateroom outfitted with upper and lower bunks, hanging lockers with lighting, upper cabinet storage, rectangular skylight, and entertainment center equipped with a wall-mounted 12-inch Zenith TV with built-in DVD. The day head has two entry doors (one from the hallway and the other, private access from the VIP stateroom). This head is complete with VacuFlush head, solid surface vanity top with stainless steel sink and faucet, mirrored medicine cabinet, and a separate shower area with seat, adjustable shower wand, and bifold door. The elegantly designed master stateroom is located forward in the bow with a full-size island berth with innerspring mattress and storage below, lamps on each side of the head board, full-length mirror, mirrored rope locker bulkhead, gunwale shelves, an entertainment center equipped with a 15" LCD flat screen TV with DVD player, and its own private head. The master stateroom head has VacuFlush head, towel cabinet storage, granite top vanity with stainless steel sink and faucet,

mirrored medicine cabinet, and a separate shower area with seat, adjustable shower wand, and circular acrylic door.

Исключения

При продаже яхты исключаются личные вещи владельца.

Отказ от ответственности

Компания предоставляет описание судна или яхты добросовестно, но не может гарантировать точность этой информации, а также не ручается за техническое состояние. Покупатель должен проинструктировать своих агентов или оценщиков исследовать представленную информацию более подробно, по собственному желанию. Продажа судна или яхты, изменение цены или снятие с продажи будет происходить без предварительного уведомления.

ФОТОГРАФИИ

Port profile



STBD bow profile



STBD quarter profile



Port quarter profile



Flybridge



Helm station



Salon



Dinette



Galley



STBD profile 2



Stern



Cockpit



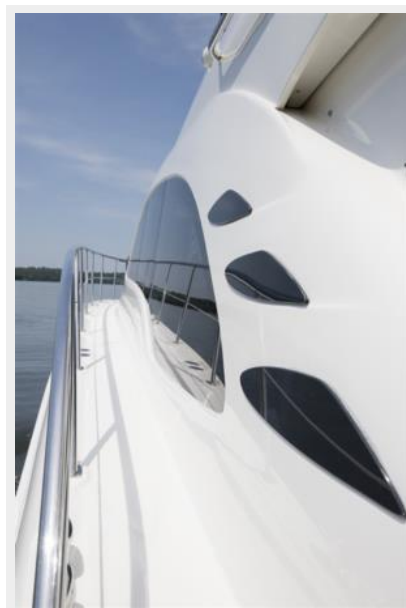
Steps to the flybridge



Entry to the salon



Side deck



Entry to the salon (with sliding door open)



Flybridge view 2



Helm



Helm view 2



Helm station looking aft



Captain's chair



Raymarine E120



STBD bow profile 2



Salon looking forward



Stbd salon



Port salon



Dinette view 2



Sink in the galley



Kenyon stove top



Panasonic microwave



Distribution panel



Steps to the staterooms



Master stateroom



Master stateroom view 2



Master head



Master head with shower



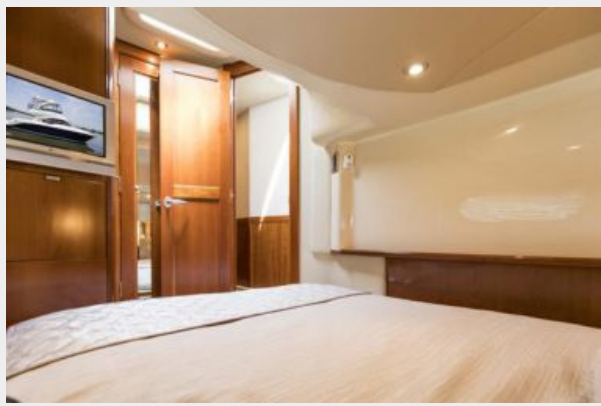
Master vanity sink



VIP stateroom



TV in the VIP stateroom



Guest vanity and shower



Guest shower



Guest stateroom



Port profile 2



Engine room



Engine room 2



Engine room 3



Engine room 4



Engine room 5



Onan genset



Bow profile



Port bow profile (in slip)



STBD bow profile (in slip)



Sink at the bridge



Norcold refrigerator at the bridge



JL audio speaker in cockpit



STBD profile 3



SmartCraft



STBD bow profile 3



STBD profile 4



КОНТАКТЫ

Андрей Шестаков (Andrey Shestakov) – ведущий яхтенный брокер отдела продаж яхт и судов компании Shestakov Yacht Sales Inc. Официальный представитель Shestakov Yacht Sales Inc. для русскоговорящих клиентов в центральном офисе компании в Майами/Форт Лодердейл/Флорида/США.

Контактная информация

Email: andrey@shestakovyachtsales.com

Web: shestakovyachtsales.com

Телефоны

Краснодарский край: **+7(918)465-66-44**

США, Майами, Флорида: **+1(954)274-4435**

Время работы

Понедельник – Суббота: **9:00 - 21:00**
EDT

Воскресенье: **Закрито**

Адрес



Harbour Towne Marina, 850 NE 3rd St,
STE 213, Dania, FL 33004