

MORNING STAR — AZIMUT



Builder: [AZIMUT](#)

Year Built: 2017

Model: Motor Yacht

Price: PRICE ON APPLICATION

Location: United States

LOA: 80' 0" (24.38m)

Beam: 20' 3" (6.17m)

Max Draft: 5' 8" (1.73m)

Cruise Speed: 26 Kts. (30 MPH)

Max Speed: 32 Kts. (37 MPH)

Our experienced yacht broker, Andrey Shestakov, will help you choose and buy a yacht that best suits your needs **Morning Star — AZIMUT** from our catalogue. Presently, at Shestakov Yacht Sales Inc., we have a wide variety of yachts available on our sale's list. We also work in close contact with all the big yacht manufacturers from all over the world.

If you would like to buy a yacht **Morning Star — AZIMUT** or would like help answering any questions concerning purchasing, selling or chartering a yacht, please call **+1(954)274-4435**

TABLE OF CONTENTS

TABLE OF CONTENTS	2
SPECIFICATIONS	4
Overview	4
Basic Information	4
Dimensions	4
Speed, Capacities and Weight	4
Accommodations	5
Hull and Deck Information	5
Engine Information	5
DETAILED INFORMATION	6
Electronics	6
Inside Equipment	6
Electrical Equipment	6
Outside Equipment/Extras	6
Extra Optionals Included	7
Cockpit	7
Galley	7
Salon and Dining	8
Fly Bridge	8
Master Stateroom	8
Guest Stateroom 1	8
Guest Stateroom 2	9
VIP Stateroom 1	9
Captains Quarters	9
Exclusions	9
Disclaimer	9
PHOTOS	11
CONTACTS	38

Contact details	38
Telephones	38
Office hours	38
Address	38

SPECIFICATIONS

Overview

New Central Listing Agreement! Best Deal on the market today! Owner very motivated to sell!

Come to see this impeccable yacht at Miami Beach Marina. Trade will be considered.

- Upgraded engines MAN V12 1800 hp
- 2 x ONAN 29 kW generators
- Low hours 310
- Fin stabilizers
- Water maker
- TV on Flybridge

Basic Information

Category: Motor Yacht

Sub Category: Flybridge

Model Year: 2018

Year Built: 2017

Country: United States

Vessel Top: Hardtop

Fly Bridge: Yes

Cockpit: Yes

Dimensions

LOA: 80' 0" (24.38m)

Beam: 20' 3" (6.17m)

Max Draft: 5' 8" (1.73m)

Speed, Capacities and Weight

Cruise Speed: 26 Kts. (30 MPH)

Max Speed: 32 Kts. (37 MPH)

Displacement: 128000 Pounds

Water Capacity: 291 Gallons

Holding Tank: 240 Gallons

Fuel Capacity: 789 Gallons

Accommodations

Total Cabins: 4

Sleeps: 9

Total Heads: 5

Captain Cabin: True

Crew Cabin: 2

Crew Sleeps: 3

Crew Heads: 1

Hull and Deck Information

Hull Material: Fiberglass

Hull Color: White

Hull Designer: Stefano Righini

Interior Designer: Salvagni Architetti

Engine Information

Engines: 2

Manufacturer: MAN

Model: V12

Engine Type: Inboard

Fuel Type: Diesel

DETAILED INFORMATION

Electronics

- Depthsounder
- Radar
- TV Set
- Navigation Center
- Plotter
- Autopilot
- Compass
- GPS
- Cockpit Speakers
- VHF

Inside Equipment

- Stern Thruster
- Dishwasher
- Bow Thruster
- Washing Machine
- Electric Bilge Pump
- Oven
- Microwave Oven
- Air Conditioning
- Electric Head
- Heating
- Hot Water
- Refrigerator
- Fresh Water Maker
- Deep Freezer
- Battery Charger

Electrical Equipment

- Shore Power Inlet
- Generator - (2) Onan 29 KW
- Inverter

Outside Equipment/Extras

- Teak Cockpit
- Cockpit Shower
- Teak Sidedecks
- Hydraulic Gangway
- Cockpit Cushions
- Cockpit Table
- Swimming Ladder

Extra Optionals Included

- Upgraded engines MAN V12 1800 hp
- US Specs
- Water maker 130 l/h
- Generator (2) ONAN 29 kw
- Stabilizers Fin Mitsubishi/CMC
- Raymarine Platinum package
- Bow and Stern thrusters joystick technology
- Raymarine T270 thermal camera
- Raymarine CAM200IP video camera
- ZF 2050 A Gears
- Dometic AC chiller system 144,000 BTUs, model Condaria PCWM 36004 co 1.14
- Sea-fire suppression system
- Jabsco spotlight control
- Single lever trim tab control
- Quick chain counter
- Underwater lights (6)
- Backlighted yacht name

Cockpit

- Kenyon grill
- Freshwater sink
- Dometic wine chiller
- Teak
- U-shaped dinette
- Large teak table

Galley

- Open galley
- 2 Refrigerator/freezer

- 4-burner Miele cooktop
- Convection oven/microwave Miele
- Large stainless steel sink
- 10 guests dishware
- Water tight door access to the side deck

Salon and Dining

- Full sized sofas and barrel chair aft
- Television and fusion stereo
- 8 guests Dining room

Fly Bridge

- Hard top with retractable center section
- Teak
- 20 feet beam
- TV
- Teak tables
- Sun pad
- U-shape dinettes
- Kenyon grill
- Freshwater sink
- Vitrifrigo icemaker
- Vitrifrigo fridge
- Plenty room for additional lounge chairs
- Bar with stools on flybridge

Master Stateroom

- Full beam master
- Walk-in closet
- Waterline windows port and starboard sides
- Dometic thermostat
- Fusion stereo control
- Bathtub
- Safe

Guest Stateroom 1

- Queen berth
- En-suite head
- Teak shower
- Dometic thermostat
- Fusion stereo control

Guest Stateroom 2

- 2 twin berths
- 1 pullman berth
- En-suite head with separate stall shower
- Dometic thermostat
- Fusion stereo control

VIP Stateroom 1

- Island queen berth
- En-suite head, separate stall shower and teak
- Mirrored walls
- Fusion stereo control
- Dometic thermostat

Captains Quarters

- Access through the transom door
- Private captain cabin
- Separate head
- Bulk room for 2 additional crew members
- Refrigerator
- Microwave
- Washer and Dryer

Exclusions

Owner's personal belongings.

Disclaimer

The Company offers the details of this vessel or yacht in good faith but cannot guarantee or warrant the accuracy of this information nor warrant the condition of the vessel. A buyer should

instruct his representatives, agents, or his surveyors, to investigate such details as the buyer desires validated. This vessel or yacht is offered subject to prior sale, price change, or withdrawal without notice.

PHOTOS

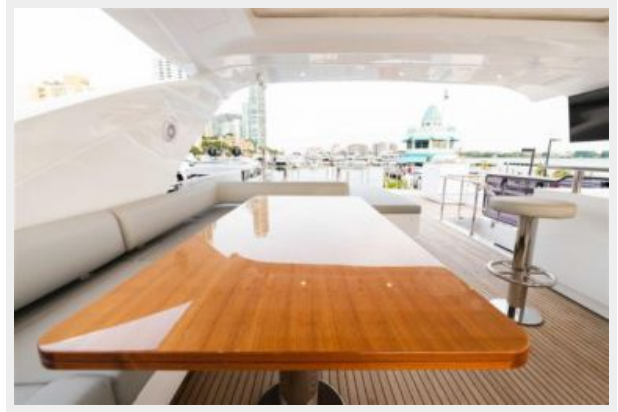








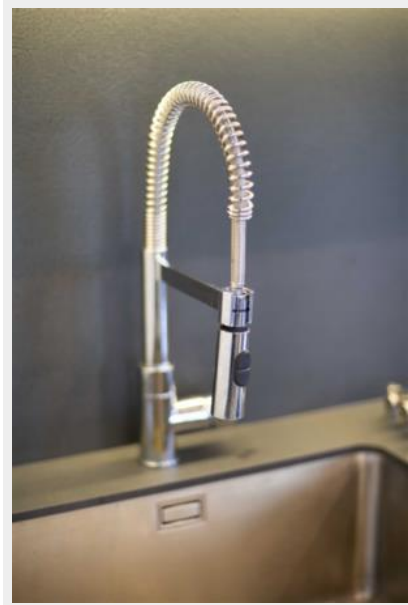




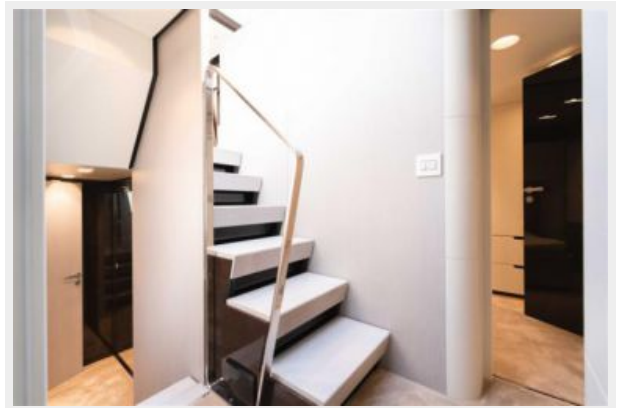
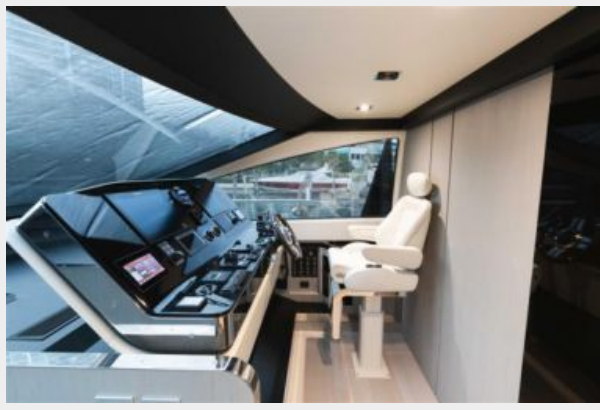


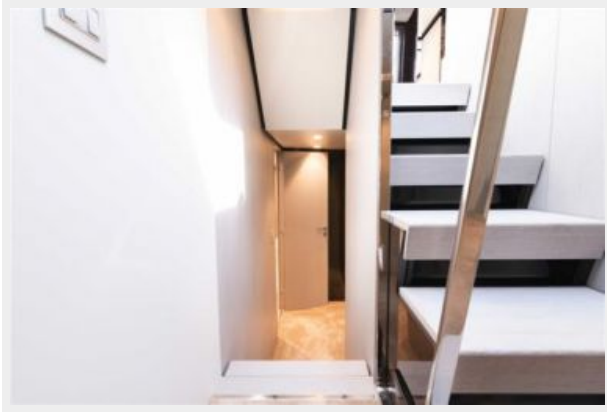












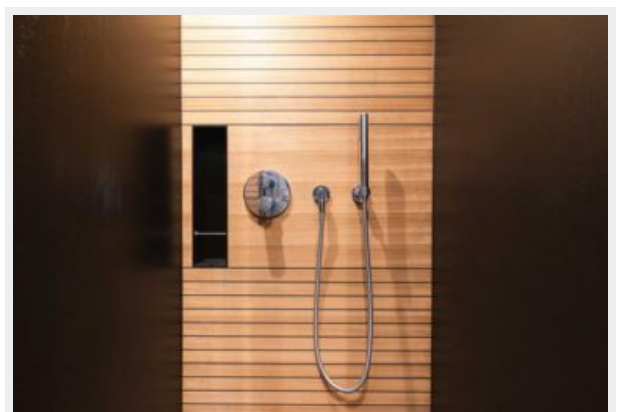
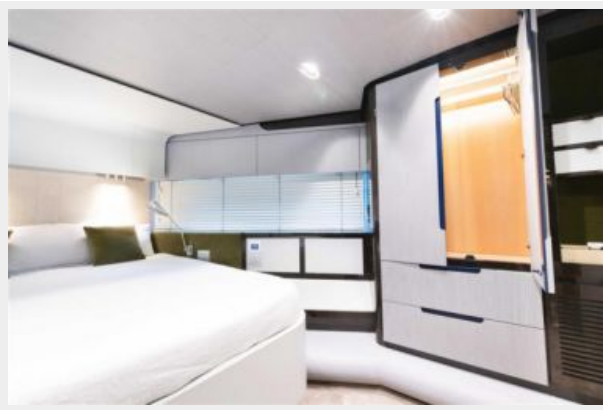


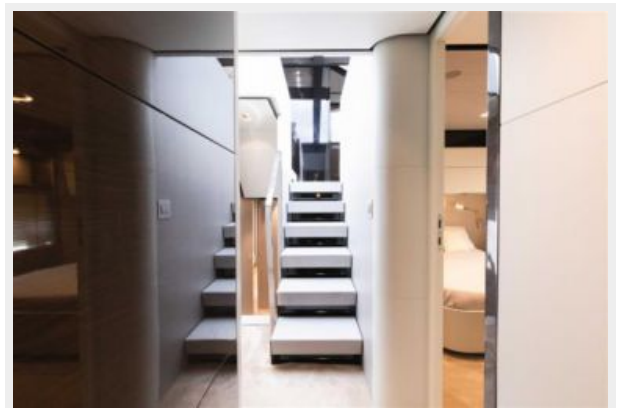
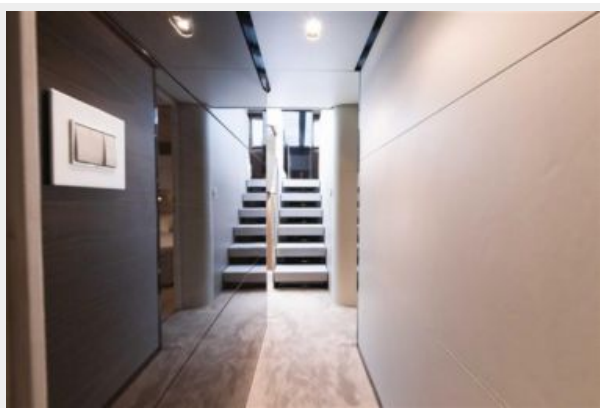
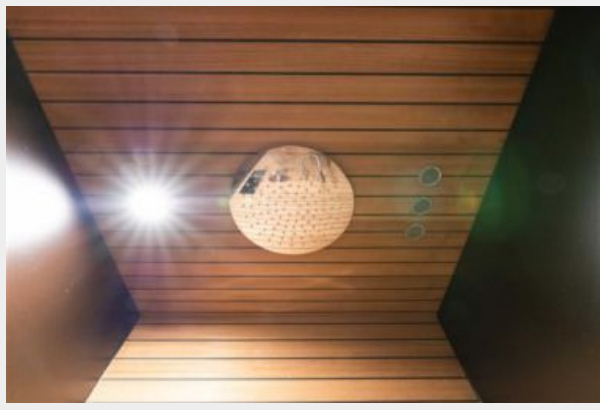










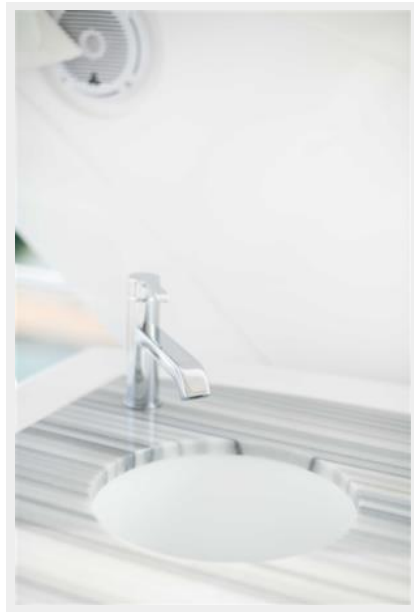
















CONTACTS

Andrey Shestakov, leading yacht broker of the sales department of Shestakov Yacht Sales Inc. Shestakov Yacht Sales Inc., the official representative of the Miami/Fort Lauderdale FL headquarters.

Contact details

Email: andrey@shestakovyachtsales.com

Web: shestakovyachtsales.com/en/

Telephones

USA: +1(954)274-4435

Office hours

Monday – Saturday: **9:00 - 21:00** EDT

Sunday: **closed**

Address



Harbour Towne Marina, 850 NE 3rd St,
STE 213, Dania, FL 33004