

MY WAY — SEA RAY



Builder: SEA RAY

Year Built: 2000

Model: Motor Yacht

Price: PRICE ON APPLICATION

Location: United States

LOA: 38' 0" (11.58m)

Beam: 14' 3" (4.34m)

Max Draft: 3' 1" (0.94m)

Cruise Speed: 20 Kts. (23 MPH)

Max Speed: 25 Kts. (29 MPH)

Our experienced yacht broker, Andrey Shestakov, will help you choose and buy a yacht that best suits your needs **My Way — SEA RAY** from our catalogue. Presently, at Shestakov Yacht Sales Inc., we have a wide variety of yachts available on our sale's list. We also work in close contact with all the big yacht manufacturers from all over the world.

If you would like to buy a yacht **My Way — SEA RAY** or would like help answering any questions concerning purchasing, selling or chartering a yacht, please call **+1(954)274-4435**

TABLE OF CONTENTS

TABLE OF CONTENTS	2
SPECIFICATIONS	3
Overview	3
Basic Information	5
Dimensions	5
Speed, Capacities and Weight	5
Accommodations	5
Hull and Deck Information	5
Engine Information	6
DETAILED INFORMATION	7
Features	7
Exclusions	7
Disclaimer	8
PHOTOS	9
CONTACTS	21
Contact details	21
Telephones	21
Office hours	21
Address	21

SPECIFICATIONS

Overview

“My Way” is fully equipped with a Spacious, Immaculate Interior that has been meticulously maintained by her owner . A MUST SEE IF LOOKING FOR Cruising anywhere in Comfort and Ease with twin 385hp Cats and 12kw generator!

Two Queen berth staterooms with ensuite baths

3 A/C Units

4 Flatscreen TV's with surround sound & Satellite Bluetooth Stereo

Washer/Dryer and Ice Maker

This is a beautiful, well maintained 380 Sea Ray ACMY, extremely clean and loaded with extensive upgrades. She is a USCG Documented Vessel with Backup Camera that makes docking a breeze!

She has light cream leather furnishings throughout, Corian counter tops and beautiful cabinetry, Splendid Washer/dryer, and bar cabinet. Twin 385hp Caterpillar 3126 diesel engines (upgraded from 340 by Cat) with approximately 1800 hours and a 12kw Westerbeke generator. This is an extremely rare boat, in that the engines are diesel. She offers a rare opportunity to own a complete cruiser, with diesel engines and plenty of upgrades on electronics.

On board Security System, Oil Change System, Racor filter water Separators, Hydraulic Steering, Systems Monitor/Alarm, Halon Fire Suppression System, Three marine Air Reverse Cycle Air Conditioners, Two VacuFlush Heads, CO-2 Monitors, FIVE NEW Batteries, Battery charger and windless.

Updated Electronics include:

Garmin 4210 Chart plotter Radar

Garmin 740 Chart plotter

Raymarine Auto Pilot

Standard Horizon VHF/DSC

Standard Horizon VHF/Hailer

Engine Synchronizer

Glendenning Cablemaster Controls

Tridata**Remote Spotlight****Two 30-Amp shore power cords****Full Enclosures and Isinglass on both upper helm and aft deck****Bridge Carpeting & Aft Deck Carpeting****Tilt Steering wheel at helm****Sunscreen and canvass covers for forward windows****Hard top aft deck with wet bar and Ice Maker****Back up Camera System that displays on the chart plotter screen making docking much easier****Extended swim platform****PLUS:****4 flat screen TV's L Shaped Leather Sofa****Surround Sound****Clarion Satellite/Bluetooth Stereo System with AMP****Flybridge stereo remote****Ice maker on aft deck**

One of Sea Ray's infrequent aft-cabin models, the 380 Aft Cabin combined a rakish profile with comfortable accommodations and good offshore performance. She rides on a fully cored hull with shallow prop pockets, underwater exhausts, and a wide 14-foot, 3-inch beam. Her appeal lies below, however, where Sea Ray designers were able to incorporate a spacious and very inviting interior. Topside, the aft deck has a built-in wet bar with ice maker as well as wing doors, while the fly-bridge is arranged with the helm forward and lounge seating for four.

Flybridge and aft deck have full isinglass enclosures that are like new!

Call us today for a private showing or more information.

Co-Brokerage Always Available

Basic Information

Category: Motor Yacht

Sub Category: Aft Cabin

Model Year: 2000

Year Built: 2000

Country: United States

Vessel Top: Bimini Top

Fly Bridge: Yes

Dimensions

LOA: 38' 0" (11.58m)

Beam: 14' 3" (4.34m)

Max Draft: 3' 1" (0.94m)

Clearance: 16' 4" (4.98m)

Speed, Capacities and Weight

Cruise Speed: 20 Kts. (23 MPH)

Max Speed: 25 Kts. (29 MPH)

Displacement: 24000 Pounds

Water Capacity: 100 Gallons

Holding Tank: 55 Gallons

Fuel Capacity: 300 Gallons

Accommodations

Total Cabins: 2

Total Heads: 2

Hull and Deck Information

Hull Material: Fiberglass

Deck Material: Fiberglass

Hull Color: white

Hull Finish: Plastic

Hull Designer: Sea Ray Yachts

Engine Information

Engines: 2

Manufacturer: Caterpillar

Model: 3126

Engine Type: Inboard

Fuel Type: Diesel

DETAILED INFORMATION

Features

Electronics

- Autopilot
- Depthsounder
- Cockpit speakers
- Plotter
- VHF
- TV set - 4 flat screen
- GPS
- Compass
- Radar

Interior

- Air conditioning - 3 Marine Reverse Cycle
- Refrigerator - NEW with side freezer
- Microwave oven - Convection
- Electric head - Vaccuflush
- Battery charger
- Washing machine - Splendid
- Hot water
- Electric bilge pump

Electrical Equipment

- Shore power inlet
- Generator - Westerbek 12kw

Deck

- Cockpit table
- Cockpit shower
- Cockpit cushions
- Swimming ladder
- Electric windlass
- Bimini Top

Exclusions

Owner's personal belongings.

Disclaimer

The Company offers the details of this vessel or yacht in good faith but cannot guarantee or warrant the accuracy of this information nor warrant the condition of the vessel. A buyer should instruct his representatives, agents, or his surveyors, to investigate such details as the buyer desires validated. This vessel or yacht is offered subject to prior sale, price change, or withdrawal without notice.

PHOTOS









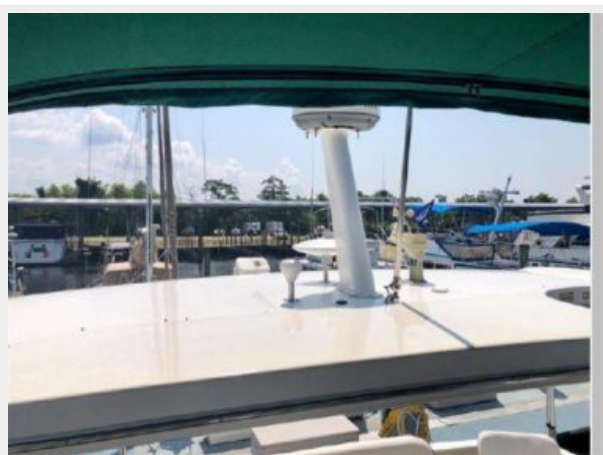


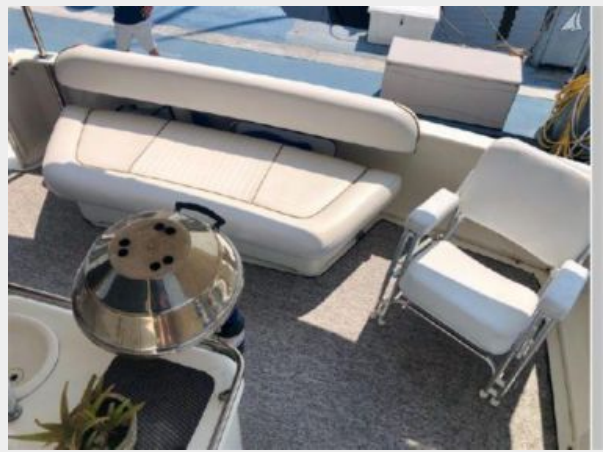














CONTACTS

Andrey Shestakov, leading yacht broker of the sales department of Shestakov Yacht Sales Inc. Shestakov Yacht Sales Inc., the official representative of the Miami/Fort Lauderdale FL headquarters.

Contact details

Email: andrey@shestakovyachtsales.com

Web: shestakovyachtsales.com/en/

Telephones

USA: +1(954)274-4435

Office hours

Monday – Saturday: **9:00 - 21:00** EDT

Sunday: **closed**

Address



Harbour Towne Marina, 850 NE 3rd St,
STE 213, Dania, FL 33004