

ENCORE — TIARA



Builder: TIARA

LOA: 43' 0" (13.11m)

Year Built: 1996

Beam: 14' 5" (4.39m)

Model: Cruising Yacht

Price: PRICE ON APPLICATION

Location: United States

Our experienced yacht broker, Andrey Shestakov, will help you choose and buy a yacht that best suits your needs **Encore — TIARA** from our catalogue. Presently, at Shestakov Yacht Sales Inc., we have a wide variety of yachts available on our sale's list. We also work in close contact with all the big yacht manufacturers from all over the world.

If you would like to buy a yacht **Encore — TIARA** or would like help answering any questions concerning purchasing, selling or chartering a yacht, please call **+1(954)274-4435**

TABLE OF CONTENTS

TABLE OF CONTENTS	2
SPECIFICATIONS	4
Overview	4
Basic Information	5
Dimensions	5
Speed, Capacities and Weight	5
Accommodations	5
Hull and Deck Information	5
Engine Information	5
DETAILED INFORMATION	6
Accommodations	6
Galley	6
Electronics	6
Hull & Deck	6
Exclusions	7
Disclaimer	7
PHOTOS	8
Salon	8
Salon	8
Salon	8
Galley	8
Galley	8
Electrical	8
Master Stateroom	9
Head	9
Guest Berth	9
Helm View	9
Salon Entry	9

Helm Seating	9
Helm Seating	10
Helm	10
Helm	10
Cockpit	10
Cockpit	10
Cockpit	10
Cockpit	11
Cockpit	11
Cockpit	11
Engine Room	11
Engine Room	11
Engine Room	11
Engine Room	12
Engine Room	12
Aft Profile	12
Port Profile	12
Starboard Profile	12
Forward Profile	12
Aft	13
CONTACTS	14
Contact details	14
Telephones	14
Office hours	14
Address	14

SPECIFICATIONS

Overview

Don't miss out on this opportunity buy a super well equipped and recently updated Tiara 4000 Express. This very knowledgeable owner has spared no expense to update this boat. She's easy to see and only 20 min away from Tampa airport if you're coming by air.

This boat is ready for you to take to the Bahamas or cruise on the bay! Call today for a private showing or for more info.

- 2017 All new Garmin 12" Touchscreens
- 2017 All new dash panel with laser etched and back lit rocker switches
- 2017 All new exterior cushions
- 2017 All new Canvas and Bimini Top
- 2017 Sea Deck on Swim Platform
- 2017 New drip less Shaft Seals
- 2017 New Cutlass Bearings and Bottom Job
- 2017 New 50" HDTV in Salon
- 2017 Shadow Casters Underwater Lights
- 2017 December, New Windlass and Stainless Steel Anchor
- 2017 May, Aftercooler, heat exchangers removed descaled and cleaned. Complete service on engines, transmissions and generator.
- 2017 New Battery Charger
- 2017 All new cockpit upholstery
- 2017 New Stereo with JL amplifiers, Subwoofers and Speakers thru out
- 2017 New Bimini top
- 2017 June, New 4 Blade Props
- 2017 December, Replaced shore power housing, panel and breakers
- 2018 New sea deck on swim platform
- 2018 November, New alternator on port engine
- 2018 New raw water hoses
- 2018 All new A/C hoses
- 2018 Bow cushion cover
- 2018 Both Transmission drive couplings replaced
- 2018 New circuit board for FWD air handler and complete A/C flush
- 2019 March, Complete service on engines, transmissions and generator

Basic Information

Category: Cruising Yacht

Model Year: 1996

Year Built: 1996

Country: United States

Registration #: USCG:1048237

Dimensions

LOA: 43' 0" (13.11m)

Beam: 14' 5" (4.39m)

Speed, Capacities and Weight

Water Capacity: 160 Gallons

Holding Tank: 57 Gallons

Fuel Capacity: 444 Gallons

Accommodations

Total Cabins: 1

Hull and Deck Information

Hull Material: Fiberglass

Engine Information

Engines: 2

Manufacturer: Caterpillar

Model: 3208

Engine Type: Inboard

Fuel Type: Diesel

DETAILED INFORMATION

Accommodations

This mid-cabin express has a huge layout, with accommodations usually only found in a motor yacht. The master stateroom has an island queen berth, two hanging lockers and plenty of other storage. An ensuite head compartment has a separate shower stall. A second stateroom aft features excellent headroom in the dressing area. There is even a second head compartment, also unusual in an express style yacht. The main salon has a large U-shaped settee to starboard and the fold out table seats up to eight guests for meals. The galley is to port. The teak and holly sole and high end fixtures and fittings are what one would expect on a yacht of this caliber.

- 2 zone reverse cycle AC/Heat
- Harman/Kardon sound system
- VacuFlush marine toilets
- (4) Opening windows

Galley

- 3 burner electric cooktop
- S/S sink with H/C pressure water
- Dockside pressure water
- U-line refrigerator w/freezer
- 2nd U-Line refrigerator in galley
- Cooks microwave/convection oven

Electronics

- Simrad autopilot
- Two Garmin 12" touch screen Chartplotter/display
- Standard Horizon VHF radio
- Ritchie compass
- ShadowCasters Underwater Lights
- JL amps, subs speakers and aft facing tower Speakers

Hull & Deck

This yacht also features an oversized swim platform that can accommodate a dinghy. A "mini garage" is built into the transom and is large enough to store bicycles, and an outboard. Hydraulically activated rams lift the helm deck for excellent engine access. The cockpit has two

hydraulically lifted tables that can be raised independently to the desired height or retracted into the cockpit sole.

- Electric windlass w/remote
- Stainless Steel anchor w/chain rode
- Saltwater deck washdown system
- Boarding gates port & starboard
- Windshield wipers
- Fiberglass bow pulpit w/anchor roller
- Navigation Lights
- Sunpad w/cover
- ACR searchlight

Exclusions

Owner's personal belongings.

Disclaimer

The Company offers the details of this vessel or yacht in good faith but cannot guarantee or warrant the accuracy of this information nor warrant the condition of the vessel. A buyer should instruct his representatives, agents, or his surveyors, to investigate such details as the buyer desires validated. This vessel or yacht is offered subject to prior sale, price change, or withdrawal without notice.

PHOTOS

Salon



Salon



Salon



Galley



Galley



Electrical



Master Stateroom



Head



Guest Berth



Helm View



Salon Entry



Helm Seating



Helm Seating



Helm



Helm



Cockpit



Cockpit



Cockpit



Cockpit



Cockpit



Cockpit



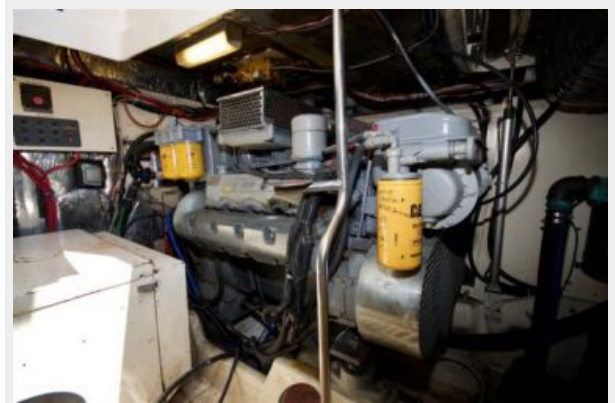
Engine Room



Engine Room



Engine Room



Engine Room



Engine Room



Aft Profile



Port Profile



Starboard Profile



Forward Profile



Aft



CONTACTS

Andrey Shestakov, leading yacht broker of the sales department of Shestakov Yacht Sales Inc. Shestakov Yacht Sales Inc., the official representative of the Miami/Fort Lauderdale FL headquarters.

Contact details

Email: andrey@shestakovyachtsales.com

Web: shestakovyachtsales.com/en/

Telephones

USA: +1(954)274-4435

Office hours

Monday – Saturday: **9:00 - 21:00** EDT

Sunday: **closed**

Address



Harbour Towne Marina, 850 NE 3rd St,
STE 213, Dania, FL 33004