

## LAZY SUZAN — OCEAN ALEXANDER



**Builder:** OCEAN ALEXANDER

**Year Built:** 2006

**Model:** Trawler Yacht

**Price:** PRICE ON APPLICATION

**Location:** United States

**LOA:** 48' 0" (14.63m)

**Beam:** 14' 8" (4.47m)

**Cruise Speed:** 18 Kts. (21 MPH)

**Max Speed:** 20 Kts. (23 MPH)

Our experienced yacht broker, Andrey Shestakov, will help you choose and buy a yacht that best suits your needs **Lazy Suzan — OCEAN ALEXANDER** from our catalogue. Presently, at Shestakov Yacht Sales Inc., we have a wide variety of yachts available on our sale's list. We also work in close contact with all the big yacht manufacturers from all over the world.

If you would like to buy a yacht **Lazy Suzan — OCEAN ALEXANDER** or would like help answering any questions concerning purchasing, selling or chartering a yacht, please call **+1(954)274-4435**

# TABLE OF CONTENTS

TABLE OF CONTENTS	2
SPECIFICATIONS	5
Overview	5
Basic Information	5
Dimensions	5
Speed, Capacities and Weight	5
Accommodations	5
Hull and Deck Information	5
Engine Information	6
DETAILED INFORMATION	7
Description	7
Manufacturer Provided Description	8
Accommodations	8
Heads	8
Galley	9
Entertainment	9
Electronics and Navigation	9
Electrical	9
Engine and Mechanical	10
Deck and Hull	10
Exclusions	10
Exclusions	10
Disclaimer	11
PHOTOS	12
Salon Aft	12
Galley Forward	12
Galley Aft	12
Lower Helm Seat	12

Lower Helm	12
Master Stateroom	12
Master Head	13
Master Stateroom Looking Aft	13
Master Head	13
Shower from Master Head	13
Guest Stateroom	14
Guest Head	14
Guest Head Shower	14
Cockpit and Flybridge Stairs	14
Cockpit Station Controls	15
FB Helm	15
FB Helm Console	15
FB Helm Nav. Electronics	15
New FB Helm Seats	15
FB Guest Seating	15
Tender on FB Boat Deck	16
Flybridge New Axiom Port Display	16
Flybridge New Axiom Starboard Display	16
Engine Rom Looking Aft	16
Engine Starboard	16
Engine Port	16
Onan 13.5 kW Generator	17
Engine Room Looking Forward	17
Starboard Dual Racor and Fuel Polisher	17
Lazarette	17
Salon TV on lift	17
AV Center	18
Salon Forward	18

CONTACTS	19
-----	-----
Contact details	19
-----	-----
Telephones	19
-----	-----
Office hours	19
-----	-----
Address	19
-----	-----

---

# SPECIFICATIONS

---

## Overview

---

LAZY SUZAN is a 2006 Ocean Alexander 48 Classico Sedan with T/440 Yanmar Diesels and all the options plus many custom features and recent upgrades.

## Basic Information

---

**Category:** Trawler Yacht

**Model Year:** 2006

**Year Built:** 2006

**Country:** United States

## Dimensions

---

**LOA:** 48' 0" (14.63m)

**Beam:** 14' 8" (4.47m)

## Speed, Capacities and Weight

---

**Cruise Speed:** 18 Kts. (21 MPH)

**Max Speed:** 20 Kts. (23 MPH)

**Water Capacity:** 200 Gallons

**Fuel Capacity:** 600 Gallons

## Accommodations

---

**Total Cabins:** 2

**Total Heads:** 2

## Hull and Deck Information

---

**Hull Material:** Fiberglass

---

## Engine Information

---

**Engines:** 2

**Manufacturer:** Yanmar

**Engine Type:** Inboard

**Fuel Type:** Diesel

---

# DETAILED INFORMATION

---

## Description

---

LAZY SUZAN is a 2006 Ocean Alexander 48 Classic Sedan with T/440 Yanmar Diesels and all the options plus many custom features and recent upgrades. The engines have been serviced on schedule and have been cared for by professionals since the current (2nd) owner purchased her in 2012. She currently has 1200 hours on her main engines and only 700 hours on the ONAN 13.5KW Gen-Set. The seller bought her from the original owner and has put 90% of the hours on LAZY SUZAN doing the Great Loop and exploring the Bahamas. She has moved from her annual inside, climate-controlled storage at River Forest's LaBelle storage facility to her slip in Ft. Myers where she is easy to board and ready for your inspection.

LAZY SUZAN is very well equipped including Raymarine's latest Axiom Hybrid multi-function GPS/Plotter/Radar/Sonar. There is 1 display at the lower helm and 2 displays at the FB helm.

Her 2 heads with roomy common stall shower between give owners their own private ensuite head and the guest head doubles as a day head. The guest SR is very user friendly with low over under berths making access to the upper berth easy for adults of all ages unlike her sister predecessors the 426 and 450 Classic Sedans. She is also faster than those models with her larger power and increased length on the same beam giving her a longer waterline for greater efficiency at trawler speeds plus an increased planning surface for high cruise speeds of 17-18 knots on her semi displacement hull. This increased planning surface also makes her more efficient at high cruise speeds as well for those days when getting there is the goal. Her tried and proven hull form does it with a soft, dry ride that will please even the most discerning yachtsman or woman. Arguably it's the best riding hull in her size and class.

Of special note is her exterior condition. OA is known for gelcoat fading and deterioration over time but LAZY SUZAN exhibits none of that. Her exterior is in fact one of her strong points along with her battery upgrade (to all North Star AGM batteries), the latest in electronics, upgraded ground tackle, dual heads and the easy access to the Flybridge and boat deck via the gently ascending stairs from the larger cockpit.

Another important feature is the large full-length Diamond Sea-Glaze sliding door from the cockpit to the salon. It is framed in stainless steel and slides on/in stainless tracks, a huge improvement over the wood framed sliding doors or smaller hinged doors on older models.

The windows are all framed in Stainless as well, another major improvement over the traditional aluminum framed windows with rubber inserts that deteriorate and require more maintenance.

Her Brower hydraulic dinghy crane makes launch and retrieval of the tender from the boat deck an easy one person operation. The FB factory hardtop is another terrific option sheltering the person at the helm and all the guests from the sun or any inclement weather with the 2016 polycarbonate FB enclosure lowered and in place.

LAZY SUZAN's engine room is easily accessible from 3 locations, through the lazarette, down a hatch in the galley with angled SS ladder, or by lifting the forward companionway stairs from the main deck to the stateroom deck. Once there the engine room has easy access to all the machinery and equipment with clean white surfaces which reflect the recently added bright LED 110V lighting in addition to the 12V lighting.

Everywhere you look this fine example of one of Taiwan's premier yacht manufacturers reflects the years of experience and development Ocean Alexander builds into every boat they construct.

LAZY SUZAN is standing tall, ready to explore new harbors and discover remote cruising grounds with her new owners or possibly retrace some of the waters she has already navigated, while completing the Great Loop with you at the helm.

---

## Manufacturer Provided Description

---

The Northwest-inspired lines of the Ocean Alexander 48 Classicco Sedan suggest her fitness for cruising. A closer inspection of the craftsmanship, the details of construction and the interior layout confirms that this indeed is a yacht born to cruise. Attention to detail is the watchword at Ocean Alexander. It begins with the design by naval architect Ed Monk Jr. and continues through the entire construction process. Hand-laid multi-directional fiberglass results in a sea friendly hull designed for efficient, long-range cruising. The 48 has extraordinary interior joiner work and an exceptional list of standard equipment, including a generator, a windlass, and two control stations. The 48 Classicco lives up to its cruising heritage the minute passengers step aboard. The large cockpit invites lounging, entertaining, even fishing. Up top the expansive bridge provides plenty of seating plus room for a dinghy. Inside, there is a spacious salon, galley, and lower station arrangement. The master stateroom comes complete with a vanity, a cedar-lined hanging locker and private access to the master head and common shower. The comfortable guest stateroom has twin upper and lower berths and a large head opposite with access to the common stall shower.

---

## Accommodations

---

This is a classic cruising sedan appointed with two staterooms and two heads with a space saving adjoining shower. Full galley. The salon, galley, lower helm and cockpit are all on the same level providing easy egress while underway, while three steps down from the galley are the staterooms, master w/centerline queen berth forward and guest stateroom with lowered over/under berths on port. The entire boat has rich satin finished teak cabinetry and paneling throughout the vessel.

---

## Heads

---

- Granite Counter Tops • Grohe faucets for sink & shower • Stall shower between heads with



granite seat & trim • Teak walls and cabinets • Medicine cabinet storage behind mirror • Tecma fresh water heads • Sealand Tankwatch 4 Holding Tank Monitor • Exhaust Fans

## Galley

• Granite Counter Tops • Kenyon 3 Burner Smooth Ceramic electric cooktop • GE Profile microwave convection oven • Teak and Holly flooring • Storage cabinets and drawers • Overhead dish lockers and cabinets • Vitrefrigo Stainless Steel 110V/12V refrigerator w/separate freezer & separate compressors • Franke double stainless steel undermount sink • Teak paneling and cabinetry • GE Disposal • GFI AC outlet • Stainless Steel Toaster Oven • U-Line Ice maker

## Entertainment

• Samsung DVD player • Yamaha Natural Sound AV Receiver • Satellite Radio • Samsung LCD Flat Panel TV's Salon & Master Stateroom • Satellite TV system

## Electronics and Navigation

- Raymarine Axiom Hybrid multi-function display w/ GPS/Plotter/Radar/Sonar lower helm
- ICOM IC-M802 VHF w/Remote Speaker Lower Helm
- Raymarine backup VHF lower helm
- Raymarine Axiom Hybrid multi-function displays (2) w/ GPS/Plotter/Radar/Sonar FB helm
- ICOM IC-M604 VHF FB Helm
- Raymarine ST 6000 Auto-Pilot w/control at Lower & FB Helm
- AIS system
- Beam - PotsDOCK Extreme Decking Station with antenna on hard top. Beam PotsDOCK Extreme is a compact docking station specifically designed to support RJ11, Bluetooth and tracking. PotsDOCK allows the Iridium Extreme handset to be connected with an RJ11/POTS interface enabling standard corded, cordless DECT handset connection or alternatively interfaced with a PABX system presenting standard ring, busy and dial tones like a standard phone network. This interfaces with the cordless phone system on the boat if you add your own Iridium Extreme handset.

## Electrical

• AC/DC distribution panel w/magnetic circuit • ONAN 13.5 KW Generator w/sound shield with 747 hours • Engine battery disconnect switch • Xantrex Freedom 25 Inverter/Charger w/2 dedicated deep cycle AGM Batteries • Polarity reverse indicating light • VOLT and AMP meters • Bonding system throughout • Shore power receptacle 50-amp 120/240 VAC • Battery paralleling system • 2 Heavy duty AGM Starting batteries for main engines • 1 Heavy duty AGM Generator starting battery • 2 Professional Protech 1230 battery chargers (1 for engine & gen batteries & 1

for Thruster batteries) • Galvanic Isolator • Sealand T-12 Macerator pump • Exterior Courtesy Lights

## Engine and Mechanical

• Twin Yanmar 440 HP FWC mains (aprox. 1200 hours) • FloScan Meters at Lower Helm • ZF Mathers Electronic Engine controls • Vetus Bow Thruster w/Joystick Controls (3) stations w/2 dedicated AGM batteries & Charger • Bronze sea cocks & raw water strainers • Engine room advanced sound insulation • Engine Room Exhaust Blowers • Dual Racor 1000FH Fuel/Water separator Filters w/Vacuum Gauges - Mains • Dual Racor 500 G Fuel/ Waters separator Filters w/Vacuum Gauge - Generator • Dripless seals for rudder posts • Dripless engine shaft seals logs • Engine room vent blowers (2) 12V • Bilge pumps (4 Rule 2000gph auto/manual) • Sump Pump (Rule 800gph auto) • Fiberglass exhaust pipes w/mufflers • Torrid Water heater 20 gallon • High water bilge alarm • ZF transmissions • Hydraulic steering • Fireboy Engine Room Fire Suppression System • Bennett V351 Trim Tabs w/12" x 32" planes • Groco 12V Oil Change pump for Engines, Transmissions & Generator • Headhunter Fresh water pump • UV Anti-bacteria Treatment for freshwater system • Headhunter Seawater Pump • Tank Tender gauge for Fuel and water tanks • Fuel Polishing system • Cruisair Air conditioning - 3 Zone w/ remote 16,000 BTU compressors & 2 dedicated seawater pumps

## Deck and Hull

• Fiberglass/Composite hull with Solid fiberglass hull below waterline • Diamond Sea-Glaze sliding doors • MUIR VCR1250A 12V windlass w/3 control stations • FB Factory Hardtop w/Polycarbonate enclosure four-sided (New 2016) • 2 Pompanette FB Helm Chairs with New upholstery & Covers • FB Helm Cover • Stainless steel anchor with 3/8" BBB chain • Fiberglass swim step w/boarding ladder • Fiberglass bow pulpit w/S/S anchor roller • Stainless steel handrails for side & fore decks • Tempered dark tinted window glass • Salon, Galley and Lower helm Window Shades – Pull up or down (New 2016) • Side cockpit boarding door at dock level starboard • Cockpit hatch with ladder to lazarette • Fiberglass radar arch w/ Integrated Hard Top • Deck access to chain locker • Hot & Cold shower cockpit • Frameless window frames • Stainless steel ports • FW & SW wash-downs Foredeck & Cockpit • Manual bilge pump • Deck Lights 12V • Recessed cleats with integrated hawse pipes • Transom door • Brower hydraulic davit for tender on FB Boat Deck • 2008 Avon 10'4" Rover Rib 315 w/ 15hp Mercury 4 cycle OB mounted on Boat Deck

## Exclusions

• Spare props • Owner's personal effects, tools, etc. • Additional items TBD

## Exclusions

Owner's personal belongings.

## Disclaimer

---

The Company offers the details of this vessel or yacht in good faith but cannot guarantee or warrant the accuracy of this information nor warrant the condition of the vessel. A buyer should instruct his representatives, agents, or his surveyors, to investigate such details as the buyer desires validated. This vessel or yacht is offered subject to prior sale, price change, or withdrawal without notice.

# PHOTOS

**Salon Aft**



**Galley Forward**



**Galley Aft**



**Lower Helm Seat**



**Lower Helm**



**Master Stateroom**



**Master Stateroom Looking Aft**



**Master Head**



**Master Head**



**Shower from Master Head**



**Guest Stateroom**



**Guest Head**



**Guest Head Shower**



**Cockpit and Flybridge Stairs**



### Cockpit Station Controls



### FB Helm



### FB Helm Console



### FB Helm Nav. Electronics



### New FB Helm Seats



### FB Guest Seating



**Tender on FB Boat Deck**



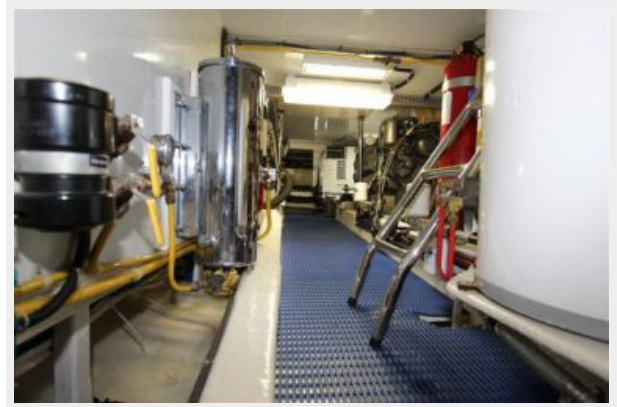
**Flybridge New Axiom Port Display**



**Flybridge New Axiom Starboard Display**



**Engine Rom Looking Aft**



**Engine Starboard**



**Engine Port**





**Onan 13.5 kW Generator**



**Engine Room Looking Forward**



**Starboard Dual Racor and Fuel Polisher**



**Lazarette**



**Salon TV on lift**



**AV Center**



**Salon Forward**



---

# CONTACTS

---

Andrey Shestakov, leading yacht broker of the sales department of Shestakov Yacht Sales Inc. Shestakov Yacht Sales Inc., the official representative of the Miami/Fort Lauderdale FL headquarters.

---

## Contact details

---

Email: [andrey@shestakovyachtsales.com](mailto:andrey@shestakovyachtsales.com)

Web: [shestakovyachtsales.com/en/](http://shestakovyachtsales.com/en/)

---

## Telephones

---

USA: +1(954)274-4435

---

## Office hours

---

Monday – Saturday: **9:00 - 21:00** EDT

Sunday: **closed**

---

## Address

---



Harbour Towne Marina, 850 NE 3rd St,  
STE 213, Dania, FL 33004