

HURRAH — STEVENS



Builder: STEVENS

Year Built: 1982

Model: Cruising Sailboat

Price: PRICE ON APPLICATION

Location: United States

LOA: 47' 0" (14.33m)

Beam: 14' 3" (4.34m)

Max Draft: 6' 0" (1.83m)

Our experienced yacht broker, Andrey Shestakov, will help you choose and buy a yacht that best suits your needs **Hurrah — STEVENS** from our catalogue. Presently, at Shestakov Yacht Sales Inc., we have a wide variety of yachts available on our sale's list. We also work in close contact with all the big yacht manufacturers from all over the world.

If you would like to buy a yacht **Hurrah — STEVENS** or would like help answering any questions concerning purchasing, selling or chartering a yacht, please call **+1(954)274-4435**

TABLE OF CONTENTS

TABLE OF CONTENTS	2
SPECIFICATIONS	3
Overview	3
Basic Information	3
Dimensions	4
Speed, Capacities and Weight	4
Accommodations	4
Hull and Deck Information	4
Engine Information	4
DETAILED INFORMATION	5
Features	5
Exclusions	11
Disclaimer	11
PHOTOS	12
CONTACTS	19
Contact details	19
Telephones	19
Office hours	19
Address	19

SPECIFICATIONS

Overview

The Stevens 47 is a fast, three stateroom cruiser designed in 1981 by Rod Stephens of the legendary Sparkman and Stephens firm. The Stevens 47 is arguably the most well-respected blue water, three stateroom sailboats produced and is highly prized on the brokerage market. Her soft motion in a seaway, swift 200 nautical mile per day passages, and luxurious accommodations are unrivaled by yachts of a comparable vintage. The performance of these Stevens is legendary. The hull shape and keel-rudder configuration make them surprisingly stiff and fast boats, well-balanced in any condition with a smooth motion offshore.

Although the design was aimed at the charter trade, she was really much more. Bill Stevens, the Caribbean Charter king of the time, immediately realized the potential and purchased the molds, making as many as he could for his BVI charter fleet as well as lending his name to the vessel. All told, 138 were built, 56 under the Stevens name before he sold the molds to Queen Long Marine. They rebranded the boat under the Hylas 47 name, building another 82 boats. Production began in 1981 and ended in 1991, when the design was modified to become the Hylas 49, which is still in production today.

The Stevens 47 has a solid-fiberglass hull and Airex-cored decks. It's beamy, but the powerful cutter rig, low-deadrise hull, and elongated fin keel put it among the faster cruisers of its era. The hull's sharp entry eliminates pounding in all but the heaviest weather, and its easy motion in a seaway is attributable in part to the fact that the weights of such major components as the engine, which is well forward under the cockpit, are centered well away from the ends.

HURRAH's owners have moved onto a larger boat and have mentioned they miss the performance they had with her. The three cabin layout is great for a family or a cruising couple. With lots of living space, good storage and tankage, HURRAH is a good choice for extended cruising or liveaboard. In fact, there are quite a number of them that have done circumnavigations- a testament to their seaworthiness. It's a lot of boat for the money.

Call and make an appointment to see HURRAH today!

Basic Information

Category: Cruising Sailboat

Model Year: 1982

Year Built: 1982

Country: United States

Dimensions

LOA: 47' 0" (14.33m)

LWL: 37' 9" (11.51m)

Beam: 14' 3" (4.34m)

Max Draft: 6' 0" (1.83m)

Clearance: 64' 0" (19.51m)

Speed, Capacities and Weight

Displacement: 32000 Pounds

Water Capacity: 110 Gallons

Holding Tank: 28 Gallons

Fuel Capacity: 98 Gallons

Accommodations

Total Cabins: 3

Total Heads: 23

Hull and Deck Information

Hull Material: Fiberglass

Hull Finish: Stainless Steel

Hull Designer: Sparkman & Stephens

Engine Information

Engines: 1

Manufacturer: Lehman

Engine Type: Inboard

Fuel Type: Diesel

DETAILED INFORMATION

Features

Accommodations

Forward stateroom: Forward most in this space is the chain locker, followed by the v-berth. The berth is a comfortable 6'5" x 23" x 54". The hullsides are padded with teak accent staving. There is a large storage space beneath the berth and a locker at the aft end. On either side are shelves and sliding doors; there are fiddled shelves above that. The starboard side of the berth has a changing seat with storage beneath it and a hanging locker above. On port there is a large mirror and two drawers with a locker beneath them. Lighting and ventilation are provided by a large overhead hatch (2013), 12v fan, an LED reading light and an overhead light. Headroom is 6'3".

Midship Cabin: Moving aft on port is the midship cabin, with over/under bunk beds measuring 6'7"x 26". There is tankage below the bottom berth and storage beneath the changing seat in the forward end of the space. Above the upper berth is another large locker forward. At the aft end is another locker, with a mirrored arch door and a fiddled dresser top above it. There is a mirror above the counter and a teak magazine & book rack in the space. Ventilation and lighting are provided by a Dorade vent, an overhead hatch, an opening port, 12v fan, two reading lights and an overhead Alpenglow light. Headroom in this space is 6'3". There is custom laminate headliner in place of the original vinyl (2013).

Forward Head/workshop: Moving out of the midship cabin and across from the mid ship cabin is the forward head. This space has been converted to a workshop and houses the generator. The white laminate counter has teak fiddles and a stainless steel sink. Above and behind the counter is a medicine cabinet with a lift-up mirrored door, an open cubby and a shelved locker with sliding doors. Beneath the counter are two more lockers with shelves and sliding doors. Ventilation and lighting are provided by an overhead hatch, an opening port, overhead teak light and the florescent light above the medicine chest.

Saloon: Moving aft is the saloon. On Starboard there is a 6'5" long settee with a lee cloth. The settee can pull out to create a 36" wide berth. Behind the settee are huge deep storage spaces, while above and behind the seat is a pilot berth space which has been converted for cruising storage (though it could easily be converted back again). On port is a 6' long L-shaped settee, with tankage beneath it. The settee can comfortable seat four on the dinette side and six with the table leaves further extended. Above and behind are fiddle shelves framed by a pair of arched Plexiglass doors. There is bin storage beneath the table. Lighting and ventilation are provided by two overhead hatches, four opening ports, two dorade vents, a fan, two teak overhead lights and two reading lamps. Headroom in the saloon is 6'6" and the headliner was replaced with hard laminate in 2013.

Nav station: The Nav is located on starboard aft of the settee. Forward facing, it is positioned on a raised storage area with storage beneath the sole. The padded seat has storage beneath it as well. The chart table is easily large enough for a chartbook and has ample storage beneath

it. There are two more lockers outboard beneath the table top and a fiddled cubby along the hull. Headroom is 6'1".

Galley: The galley is linear and located on port. There is a huge fiddled counter space over the engine box, with the deep double sinks in this space. On the outboard side of the galley forward is counter space, with a top loading dry bin above and a drawer and tip out trash bin beneath. Next aft is the stove. There is a lift-up countertop cover and a small locker below for cookware. Next aft are the top loading refrigerator and freezer compartments. At the aft end of this is a large pantry locker. Above and behind the entire counter area are a six-section dish organizer rack, a large open cubby with fiddles, a cubby with counterspace and a fiddled shelf directly behind the stove, three drawers and three lockers with sliding doors and a microwave. Lighting and ventilation are provided by three overhead teak lights, three opening ports and a 12v fan. Headroom is 6' in this space.

Master stateroom: Access to the master stateroom is from both port and starboard walk-throughs, which allows for great air flow when anchored. The master cabin has two berths. There is a 6'5" x 29" berth on starboard and a 6'6" x 47" berth on port. Both berths have lee cloths, making this berth configuration ideal for offshore passages. Outboard of either berth are lockers with shelves and fiddled shelves above those. Forward of each berth is a hanging locker with a shelf above. The port berth has a changing seat beneath the hanging locker, with storage beneath the seat. Between the berths is a 24" x 36 counter space, with double door locker storage beneath it, a changing seat below that and more storage beneath the seat. The forward center of the cabin has a large arched mirror door with shelving behind it. Light and ventilation are provided by two teak overhead lights, two reading lights, a large overhead hatch, a dorade, two opening ports and three fans. Headroom in the master stateroom is 6'1".

Aft Head: The aft head can be accessed from the salon by the nav station or from the master stateroom. The head is at the aft end of the space and has lockers behind and above it. Next forward is a nice sized fiddled counter space with a sink. Beneath the sink is a large storage locker with shelves and sliding doors. Above and behind the counter is a medicine cabinet with a lift-up mirrored door and another shelved locker with sliding doors. There are separate shower controls and a shower wand on a hose. Ventilation is from an opening port, a dorade vent and a 12v. fan. Additional lighting is from a teak overhead light. Headroom in here is 5'10".

- Teak and holly cabin sole
- Solid teak and teak veneers throughout
- Lewmar Ocean Series hatches
- Alpenglow LED red/white lighting throughout
- 12v Caframo fans throughout

Galley

- Deep double stainless steel sinks
- Delta single lever H/C water mixer
- Fresh water foot pump

- Salt water foot pump
- Force 10 3 burner stove with oven and broiler ('17)
- 20 lb. aluminum LPG tanks (2)
- GE Microwave
- Divided, top loading freezer and refrigerator
- Additional insulation added to fridge and freezer ('13)
- Frigoboat keel cooled 12v refrigeration ('13)
- Frigoboat 12v spillover fan with thermostat
- Built in plate and bowl storage
- Teak paper towel holder
- Teak cupholders

Heads

Forward Head:

- Stainless steel sink
- Hot & Cold pressure water faucets
- Separate shower mixer with sprayer wand
- Teak shower grate

Aft Head:

- Stainless steel sink
- Hot & Cold pressure water faucets
- Separate shower mixer with spray wand
- Teak shower grate
- Electric shower sump pump
- Raritan PSII manual head
- Y-valve for overboard discharge
- Shower curtain on rod

Water Systems

- Balmar 10 gallon stainless steel hot water heater
- ShurFlo fresh water pump
- Groco accumulator tank
- GE fresh water filtration system
- Village Marine water maker (last used 2014)
- Whale manual bilge pump in galley
- PAR high volume electric bilge pump

Hull and Deck

- Modified full keel

- Encapsulated lead ballast
- Partial skeg hung rudder
- Below waterline thru-hulls upgraded to Marelon ('13)
- Teak rub strake with stainless steel cap
- Custom heavy duty double stainless steel bow roller ('13)
- Lewmar 75 lb. CQR type anchor with 300' of 3/8" chain
- Fortress FX-23 stern anchor with 3/8" chain and rode
- Chain stopper
- Maxwell vertical windlass with gypsy and drum
- Electric up foot switch
- 2-tone non-skid deck
- 12" stainless steel mid-ship cleats with toe guards
- 10" stainless steel stern rail cleats
- Stainless steel bow and stern pulpits
- 31" high deck stanchions
- Dyneema lifelines
- Port, starboard and transom lifeline gates
- Heavy duty pivoting dingy davits
- Stainless steel swim ladder
- Dodger with connector and window covers
- Bimini
- Full cockpit enclosure
- Full cockpit screen enclosure
- Teak grab rails
- Teak slotted cockpit seats
- Six Lewmar Ocean Series hatches ('13)
- 14 opening portlights, including 2 Bomar stainless portlights opening into the cockpit ('13)
- Five closable dorade vents

Sails and Rigging

- Profurl roller furlers for Genoa and staysail
- Keel-stepped double spreader aluminum mast
- Whisker pole track and adjustable car on mast
- Storm Trysail track on mast
- 1x19 stainless steel wire shrouds
- Standing rigging inspected ('12)
- Forespar rigid boom vang
- Forespar whisker pole
- Running back stays
- Inboard mounted genoa tracks for higher sheeting angles
- Bariant #27 two speed chrome self-tailing halyard winches on mast (2)
- Bariant #25 chrome halyard winches on mast (2)
- Spinlock line clutches for roller furlers (2)

- Barient #36 two speed chrome self-tailing primary winches (2)
- Barient #28 two speed chrome self-tailing secondary winches (2)
- Barient #27 two speed chrome self-tailing main sheet winch
- Quantum full battened main with 2 reefs ('09)
- Genoa
- Spinnaker
- Quantum staysail ('15)
- Trysail
- Storm jib
- Main, Genoa & Staysail halyards replaced with light weight Vectran cored Yale Crystalline ('13)
- Genoa sheets replaced ('13)
- Quantum stack pack for main ('15)
- I: 60.00'
- J: 19.00'
- P: 53.50'
- E: 18.00'

Engine and Machinery

- Ford Lehman 4N91 91HP 4 cylinder engine with approx. 3000 hours ('02)
- ZF Marine HBW250 transmission
- Dual Racor 500 fuel filters with vacuum gauge
- Fuel pump rebuilt ('17)
- Heat exchanger, exhaust elbow and fresh water pump replaced ~ 2000 hours
- Two fuel tanks with 98 gallons
- Fuel polishing system with ability to transfer between tanks while polishing
- Fireboy automatic fire extinguisher system
- Vented dripless shaft seal
- Prop and shaft coated with PropSpeed ('16)
- 3-blade 15" Max Prop
- Spurs line cutter
- Edson steering pedestal
- Leather wrapped stainless steel Destroyer wheel
- Dual lever engine controls
- Danforth compass
- Phasor 3.5Kw diesel generator with 700 hours
- Parker M500 fuel filter for genset
- Coastal Climate Control digital control pads for both AC units
- Lunaire 9K BTU reverse cycle heat/air conditioning for aft cabin and head
- Cruiseair reverse cycle heat/air conditioning for saloon and forward staterooms

Electrical

- Two Smart Plug 30A shore power connections w/cords ('15)

- Galvanic isolator
- Two Blue Sea Systems AC Electric panels ('13)
- Blue Sea Systems AC M2 multimeter measures Amps, Volts, Hertz.
- 120v receptacles throughout with GFCI protection
- Xantrax Freedom 3000W 140A Inverter/charger
- Link 2000 battery monitor system
- Blue Sea Systems 12v electrical panel ('13)
- Decca Group 27 starting batteries (2)
- Four Lifeline 6v. house batteries for 440AH
- Link 2000 battery monitor system
- Link 10 battery monitor
- Battery combiner
- Cole Herse battery isolation guard
- Two Kyocera 140W solar panels on rail mounts ('13)
- Outback solar panel charge controller with MPPT (Maximum Power Point Tracking) ('13)

Electronics

- Raytheon RL 70 radar
- Raytheon radome
- Edson radar mast
- Raymarine i50 wind ('15)
- Raymarine i50 speed & log ('15)
- Raymarine i50 depth ('15)
- Raymarine i50 multi display ('15)
- Furuno GP33 GPS ('14)
- Simrad AP28 autopilot control head
- Simrad AP200 autopilot control head
- Simrad J300 autopilot computer
- Simrad RPU 300 hydraulic drive pump
- SimradHLD2000 hydraulic linear drive
- Icom IC-706MKIIG high frequency radio
- Kenwood TKM-707 single sideband radio
- External speaker
- SGC230 automatic antenna tuner
- SCS Pactor PTC-IIe modem
- Alpha delta coax antenna switch
- Daiwa cross needle SWR/power meter
- Insulated back stay for SSB & ham radios
- Bonded rub rails for counterpoise
- Icom ICM506 VHF radio with DSC ('15)
- Milltech Marine AIS receiver ('15)
- Icom Command Mic II RAM mic
- Surge protector

- Fusion stereo system
- Stereo set up for satellite radio and/or iPod
- Polk audio cockpit speakers
- Cable TV shore power connector

Other Equipment

- NOVA lift outboard engine hoist
- Edson outboard motor pad
- Jim Buoy horse shoe ring with strobe
- Dock lines and fenders
- Sunbrella winch covers
- Teak cockpit table
- Teak drink holders
- Winch holders (2)

Exclusions

Owner's personal effects and any items not specifically described in this listing

Exclusions

Owner's personal belongings.

Disclaimer

The Company offers the details of this vessel or yacht in good faith but cannot guarantee or warrant the accuracy of this information nor warrant the condition of the vessel. A buyer should instruct his representatives, agents, or his surveyors, to investigate such details as the buyer desires validated. This vessel or yacht is offered subject to prior sale, price change, or withdrawal without notice.

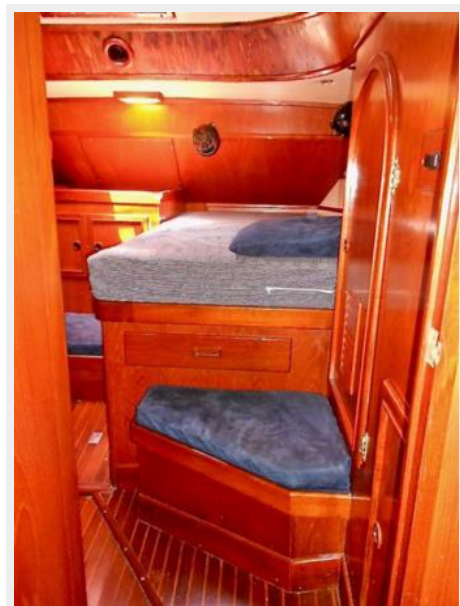
PHOTOS

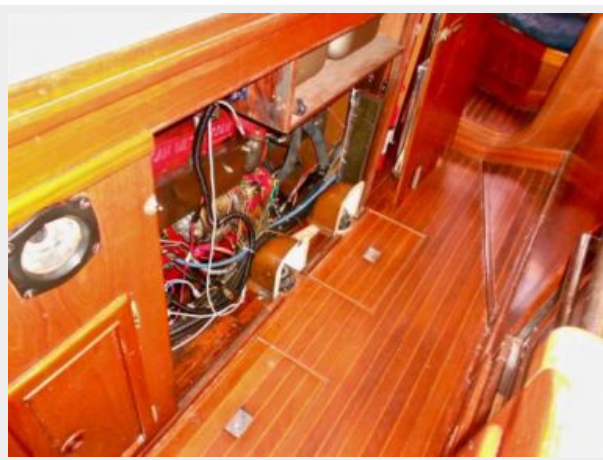


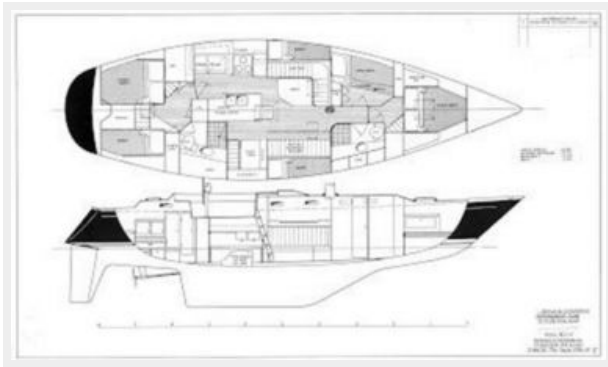












CONTACTS

Andrey Shestakov, leading yacht broker of the sales department of Shestakov Yacht Sales Inc. Shestakov Yacht Sales Inc., the official representative of the Miami/Fort Lauderdale FL headquarters.

Contact details

Email: andrey@shestakovyachtsales.com

Web: shestakovyachtsales.com/en/

Telephones

USA: +1(954)274-4435

Office hours

Monday – Saturday: **9:00 - 21:00** EDT

Sunday: **closed**

Address



Harbour Towne Marina, 850 NE 3rd St,
STE 213, Dania, FL 33004