

OFF WATCH — MOODY



Builder: MOODY

Year Built: 2000

Model: Cruising Sailboat

Price: PRICE ON APPLICATION

Location: United States

LOA: 42' 0" (12.80m)

Beam: 13' 3" (4.04m)

Max Draft: 4' 11" (1.50m)

Our experienced yacht broker, Andrey Shestakov, will help you choose and buy a yacht that best suits your needs **Off Watch — MOODY** from our catalogue. Presently, at Shestakov Yacht Sales Inc., we have a wide variety of yachts available on our sale's list. We also work in close contact with all the big yacht manufacturers from all over the world.

If you would like to buy a yacht **Off Watch — MOODY** or would like help answering any questions concerning purchasing, selling or chartering a yacht, please call **+1(954)274-4435**

TABLE OF CONTENTS

TABLE OF CONTENTS	2
SPECIFICATIONS	3
Overview	3
Basic Information	3
Dimensions	4
Speed, Capacities and Weight	4
Accommodations	4
Hull and Deck Information	4
Engine Information	4
DETAILED INFORMATION	5
Features	5
Exclusions	10
Disclaimer	10
PHOTOS	11
CONTACTS	19
Contact details	19
Telephones	19
Office hours	19
Address	19

SPECIFICATIONS

Overview

Moodys are legendary for their solid construction, sea kindly performance and offshore passage making capability. The Moody 42, another popular Bill Dixon design, is another great example from this fine builder and capable of taking you to any cruising destination. Its center cockpit design provides a lot of interior volume and living space, including a marvelous centerline master stateroom aft in the boat.

Our offering, "OFF WATCH" was ordered by her current owner and is hull number 40. Most of her life she has spent in the Chesapeake Bay, away from the tropics and harsh environment that comes with it. Her shoal draft and great ventilation make her an obvious choice for many of the cruising grounds of the East Coast and the Bahamas.

A few of her standout features include:

- Bow thruster
- Max Pro
- Reverse cycle heat/air conditioning
- Dual refrigeration and freezer units
- Mastervolt generator with only 68 hours
- In-mast furling

Time marches on and now it is time for her owner to move on to other things. OFF WATCH is a solid platform for her next owners and with a little love will provide them with a great boat for years to come.

She is well equipped and aggressively price for a quick sale. Call and make an appointment to see her today!

Basic Information

Category: Cruising Sailboat

Sub Category: Center Cockpit

Model Year: 2000

Year Built: 2000

Country: United States

Dimensions

LOA: 42' 0" (12.80m)

LWL: 34' 10" (10.62m)

Beam: 13' 3" (4.04m)

Max Draft: 4' 11" (1.50m)

Clearance: 55' 0" (16.76m)

Speed, Capacities and Weight

Displacement: 23641 Pounds

Water Capacity: 96 Gallons

Holding Tank: 20 Gallons

Fuel Capacity: 72 Gallons

Accommodations

Total Cabins: 2

Total Berths: 5

Total Heads: 2

Hull and Deck Information

Hull Material: Fiberglass

Hull Designer: Bill Dixon

Engine Information

Engines: 1

Manufacturer: Yanmar

Model: 4JH3T

Engine Type: Inboard

Fuel Type: Diesel

DETAILED INFORMATION

Features

Accommodations (Vessel Walk-Thru)

Forward stateroom: Starting forward, the forward stateroom has an ensuite head. The berth is 80" long x 84" x 18". There is storage beneath the berth on either side and cherry hullside staving. Above the staving there are four lockers on either side, providing plenty of storage for clothing or gear. Additionally, on starboard, there is a tall double doored locker with half hanging and half shelf space. There is a fiddled shelf space above the locker. On port there is a mirror and then entry into the head. Lighting and ventilation is from two reading and one overhead light as well as an overhead hatch. Headroom in here is 6'.

Forward Head: The ensuite head is located on port. As you enter the space, the head is immediately in front of you and has a fiberglass drop-down showering seat. Above and behind the head is a double doored locker. The molded countertop curves around from behind the head to the right and has an integral round sink. There is a locker below the sink and a mirror above. Ventilation and lighting are from an overhead hatch and two overhead lights. Headroom in here is 6'.

Saloon: The saloon features a centerline drop-leaf dinette table; there is drawer and liquor bottle storage beneath. On port there is a C-shaped settee that is 6'8" long. There is a water tank beneath the seat as well as some storage at the aft end; there is also storage behind the seat backs. Immediately behind the seat is a shelf. Above that are a pair of lockers at either end and two fiddled shelves between the lockers. A fixed hullside light is above the upper shelf.

On port is a 5'10" long straight settee, with storage behind the seat backs and tankage beneath. Behind and above the seat is a mirror image of the port side.

The saloon/nav/galley area is well lit and ventilated, with two hatches, two hullside and two house side fixed lights, four opening ports and eight overhead lights. Headroom in the saloon is 6'2".

Nav station: The nav station is on port and is forward facing. The large chart table fits your chartbook with room to spare. There is plenty of storage beneath the lid; below that there is a drawer and a locker facing toward centerline. A smaller locker with a lift-up lid is outboard of the seat. The upholstered nav seat has storage beneath it and there is a full height hanging locker behind it, with access to the mid and master cabins aft of that. Across from the seat is another locker with shelves. Electrical and electronic equipment is located above the table. Headroom here is 6'2". **Passageway cabin:** Located on port and aft of the nav station, this cabin has a mid-level bunk and three storage lockers beneath it; in this case two of them house the air conditioning unit. There is a removable panel at the aft end of the bunk; this opens to shared space with the hanging locker in the master. When this is opened up it makes into a 6'7" x 27" berth. Along the centerline are a pair of full height double doors which provide great access to the

machinery space. Lighting and ventilation in here are from an overhead light, a reading light and an opening port. Headroom varies from 5'8" (beneath the cockpit sole) to 6'4".

Galley: The galley is located on starboard and is in the other corridor to the master stateroom. On the centerline side are the two sinks and a generous amount of counter space, with double doored shelf storage beneath them. Aft of the double doors is a tip-out trash bin. There is additional counter room in the pass-thru space beneath the cockpit sole, which is where the microwave is.

Along the hullside, the L-shaped countertop has top loading refrigerator and freezer access. Forward of those is a locker beneath the counter; aft of them is the stove. Beneath the freezer and the stove are drop-front lockers for storage of pots and pans. Above and behind the countertop are four sliding doors with storage behind and four locker doors above. Headroom in here is 6'3".

Aft head: The aft head is located between the galley and the master stateroom on starboard. Entering from the master, there is the sink and head, with a locker above the counter behind the head and another locker beneath the sink. The separate shower stall is next and has a Plexiglass window between the head and the shower and a bi-fold Plexiglass door, keeping the shower out of the walk-thru access to the galley. There is a fiberglass seat molded into the compartment and a shower wand on a height adjustable bar. Headroom in here is 6'2". An opening port provides ventilation and there are two overhead lights.

Master stateroom: The master stateroom features a centerline walkaround queen mattress with a padded headboard. Entry is either through the port corridor aft of the passageway cabin or through the head on starboard. On the port side there is a hanging locker that can also be converted to be the footwell for the passageway cabin if desired. There is fiddled shelf space above it. Next aft along the hull is a fiddled countertop with a lid that lift for lots of cubby storage beneath. On the starboard side there is a hanging locker forward and a shelving locker aft of that, both with a fiddled shelf space above them. There is a changing seat next to the berth with a drawer below it. Across from the foot of the berth is a vanity desk on the forward bulkhead, with jewelry compartments and a dressing mirror above it.

There are two opening ports, one fixed port and an overhead hatch for this space, as well as two overhead lights. Headroom in the master stateroom is 6'1".

- Teak and holly cabin sole
- Cherry joinery and hullside staving
- Wood finished cabinet and locker interiors
- Curtains for all windows and ports
- Metal locker and door hardware- not plastic!
- Cherry radiused fiddles with integral handholds

Galley

- Corian countertops with cherry fiddles
- Stainless steel sinks (2)

- Corian sink covers, one with cutting board on reverse side
- Single lever water mixer with pull-out sprayer wand
- Top-loading freezer and refrigerator
- Dual keel-cooled Frigoboat systems for both boxes
- Two aluminum 11 lb. LPG tanks in dedicated locker
- Marinetics LPG solenoid control
- Four burner LPG stove and oven with broiler
- Stove top cutting board cover
- Tip-out trash bin

Heads

Forward head:

- Molded countertop with integral sink
- Single lever water mixer
- Separate single lever shower mixer
- Shower sprayer wand on height adjustable bar
- Electric shower sump pump
- Jabso manual head
- Wema holding tank monitor

Aft head:

- Molded countertop with integral sink
- Single lever water mixer
- Jabso manual head
- Separate shower stall with bi-fold door
- Single lever shower mixer
- Shower sprayer wand on height adjustable bar
- Electric shower sump pump

Water Systems

- 110V and engine heated 12 gallon hot water heater ('17)
- Pressure hot and cold water
- Hot and cold transom shower
- Electric bilge pump
- Manual bilge pump

Hull and Deck

- Bottom paint ('16)
- Engine and genset intake thru-hulls replaced ('17)
- Double stainless steel anchor roller
- CQR anchor with 130' of 5/16" chain and 150' of nylon rode

- Simpson Lawrence electric windlass with up/down controls
- Fortress FX27 anchor w/6' of 5/8" chain and 200' of 5/8" nylon rode
- Mooring cleats (6)
- Stainless steel bow and stern rails
- Stainless steel stanchions mounted on cap rail
- Double vinyl coated stainless steel wire life lines
- Lifeline gates on transom, side aft and amidships on port and starboard
- Rub rail with stainless steel cap
- Teak cap rail
- Teak grab rails (2)
- Dorades with stainless steel (2) and plastic cowls (2)
- Stern rail seals
- Transom steps to swim platform
- Stainless steel swim ladder
- Teak cockpit sole and seats
- Rigid windscreen
- Sunbrella dodger with side grab bars
- Bimini
- Bimini enclosure panels in plastic and screens
- Teak companionway screens

Sails and Rigging

- Furlex roller furler
- Removable inner forestay
- Deck stepped double spreader aluminum Selden mast and boom
- Selden Furlin' in-mast roller furler
- Selden Rodkicker boom vang
- Ronstan mainsail preventer
- Split backstay
- Lewmar adjustable Genoa cars
- Lewmar mainsheet traveler and car
- All lines are led aft to the cockpit
- Lewmar #44 two speed self-tailing primary winches (2)
- Lewmar two speed self-tailing mainsheet winches (2)
- Lewmar #30 housetop winch
- Spinlock line clutches (6)
- Hood Genoa with padded luff (restitched '12)
- Hood staysail ('00)
- Hood storm trysail ('00)
- Hood in-mast mainsail ('00)
- I: 50'0"
- J: 13'11"
- P: 43'6"

- E: 14'3"

Engine and Machinery

- Yanmar 4JH3T 67HP engine with 1329 hours on the Hobbs meter
- Racor 500 fuel/water filters for engine and generator (2)
- Direct drive shaft
- 3-blade Max Prop
- Whitlock steering pedestal
- Stainless steel destroyer wheel
- Single lever engine control
- Whitlock compass
- Side Power bow thruster
- Marine Air 16,000BTU reverse cycle heat/air conditioner

Electrical

- 30A shore power connection and cord
- 50A to 2-30A splitter
- Assorted 50A, 30A and 120V electrical adaptors
- Blue Sea Systems 120V source selector (shore/inverter)
- 110V AC electrical panel with volt meter
- 110V receptacles throughout
- 12v DC electrical panel with volt meter
- Mastervolt TruCharger 12/40-3 battery charger
- 80A alternator
- ProSine 2000W true sine wave inverter
- Xantrex Link 20 battery monitor
- Group 31 bow thruster battery
- Group 27 engine starting battery ('17)
- Two Group 31 house batteries ('17)
- Mastervolt Whisper 3.5Kw generator with 68 hours ('08)

Electronics

Helm:

- Raymarine C80 color chartplotter
- B&G Network Pilot autopilot
- B&G GPS +12
- B&G Network Quad speed/depth/log/sea temp
- B&G Network wind

Nav station:

- B&G Network Quad speed/depth/log/sea temp

- B&G Network Nav
- B&G Network Data wind/speed/depth
- ICOM IC-M59 VHF radio
- Dual XDM280BT Bluetooth stereo with AM/FM/CD/MP3/USB ('19)
- Speakers in saloon and cockpit

Other Equipment

- Kato Marine davits ('00)
- Edson outboard motor pad
- Lifesling and hoisting blocks
- Fenders
- Fender baskets on stern rail (2)
- Docklines
- Boathook
- Folding teak cockpit table
- Cup holders
- Bottomsider cockpit cushions
- Sport-A-Seats (2)
- Bar-B-Que grill
- Jack line
- Full winter cover ('00, used twice)

Exclusions

Owner's personal effects and any items not specifically described in this listing

Exclusions

Owner's personal belongings.

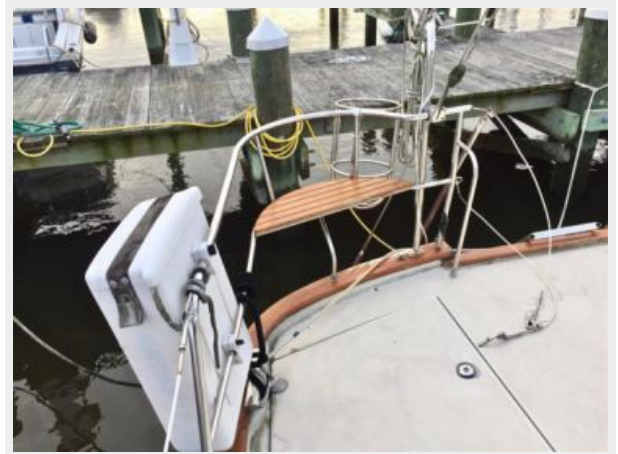
Disclaimer

The Company offers the details of this vessel or yacht in good faith but cannot guarantee or warrant the accuracy of this information nor warrant the condition of the vessel. A buyer should instruct his representatives, agents, or his surveyors, to investigate such details as the buyer desires validated. This vessel or yacht is offered subject to prior sale, price change, or withdrawal without notice.

PHOTOS



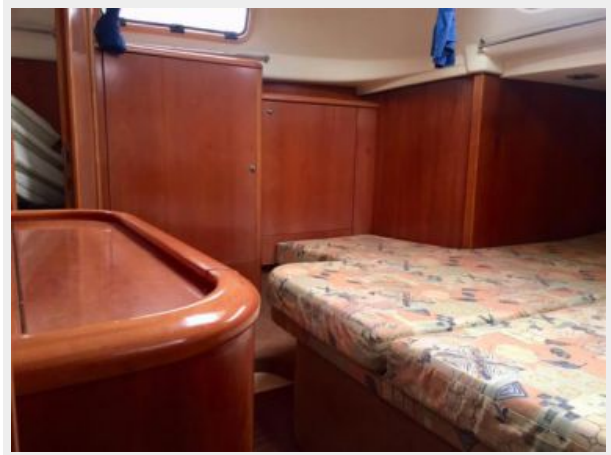














CONTACTS

Andrey Shestakov, leading yacht broker of the sales department of Shestakov Yacht Sales Inc. Shestakov Yacht Sales Inc., the official representative of the Miami/Fort Lauderdale FL headquarters.

Contact details

Email: andrey@shestakovyachtsales.com

Web: shestakovyachtsales.com/en/

Telephones

USA: +1(954)274-4435

Office hours

Monday – Saturday: **9:00 - 21:00** EDT

Sunday: **closed**

Address



Harbour Towne Marina, 850 NE 3rd St,
STE 213, Dania, FL 33004