

LA PERI — J BOATS



Builder: J BOATS

Year Built: 2003

Model: Cruising/Racing Sailboat

Price: PRICE ON APPLICATION

Location: United States

LOA: 34' 0" (10.36m)

Beam: 11' 0" (3.35m)

Max Draft: 5' 6" (1.68m)

Our experienced yacht broker, Andrey Shestakov, will help you choose and buy a yacht that best suits your needs La Peri — J BOATS from our catalogue. Presently, at Shestakov Yacht Sales Inc., we have a wide variety of yachts available on our sale's list. We also work in close contact with all the big yacht manufacturers from all over the world.

If you would like to buy a yacht La Peri — J BOATS or would like help answering any questions concerning purchasing, selling or chartering a yacht, please call **+1(954)274-4435**

TABLE OF CONTENTS

TABLE OF CONTENTS	2
SPECIFICATIONS	3
Overview	3
Basic Information	3
Dimensions	3
Speed, Capacities and Weight	3
Accommodations	3
Hull and Deck Information	3
Engine Information	4
DETAILED INFORMATION	5
Features	5
Exclusions	6
Disclaimer	6
PHOTOS	8
CONTACTS	10
Contact details	10
Telephones	10
Office hours	10
Address	10

SPECIFICATIONS

Overview

- LUXURIOUS DAYSAILER
- COMFORTABLE OVERNIGHTER
- WINNING PHRF RACER

Basic Information

Category: Cruising/Racing Sailboat

Sub Category: Daysailer

Model Year: 2003

Year Built: 2003

Country: United States

Dimensions

LOA: 34' 0" (10.36m)

LWL: 29' 6" (8.99m)

Beam: 11' 0" (3.35m)

Max Draft: 5' 6" (1.68m)

Speed, Capacities and Weight

Displacement: 7750 Pounds

Water Capacity: 5 Gallons

Holding Tank: 12 Gallons

Fuel Capacity: 12 Gallons

Accommodations

Total Cabins: 1

Total Heads: 1

Hull and Deck Information

Hull Material: Fiberglass

Engine Information

Engines: 1

Manufacturer: Yanmar

Model: 2GM20F

Engine Type: Inboard

Fuel Type: Diesel

DETAILED INFORMATION

Features

NEW TO THE MARKET

**** ADDITIONAL INFO AND PHOTOS AVAILABLE SOON ****

SAILS and RIGGING

- Quantum mainsail ('15)
- Quantum jib
- Asymmetrical spinnaker
- Quantum mainsail (spare)
- Original mainsail and jib
- Hall mast and boom
- Rod rigging
- Navtec hydraulic backstay
- Retractable carbon fiber sprit - for asymm spinnaker
- Rod vang
- Double ended 8-part mainsheet - w/ Harken blocks
- Harken 8-part traveler
- 4 Lewmar 2-speed, self-tailing winches: 2 #44 primary, 2 #30 halyard/spinsheet
- 4 Lewmar line stoppers

I : 40.50 ft J : 13.50 ft P : 41.50 ft E : 14.50 ft Working Sail Area : 577.00 sq ft

ELECTRONICS

- 4 Raymarine ST-60 displays (depth. wind/ knot/log, Multi)
- Raymarine wheel pilot
- VHF transceiver

2 12V batteries; selector switch; breaker panel

ACCOMODATIONS

- Double berth, forward
- Raritan marine head to port
- Opposing settee/berths in main cabin
- Galley - with Origo cooktop and sink; Igloo cooler
- Large Lewmar hatch, forward; small Lewmar hatch in head compartment
- 2 large opening ports; 2 small opening ports

DECK and OTHER EQUIPMENT

- Edson pedestal/wheel -w/ elkhide cover and 5" Ritchie compass
- Fortress FX-16 anchor -w/chain and rode
- Lifesling
- Dodger
- SS handrails
- 1x19 SS lifelines
- Electric and Manual bilge pumps
- Wheel cover; winch covers

Manufacturer Provided Description

J/105 has a large cockpit combined with a simple 4-5 berth week-ending layout that results in two significant owner benefits: (1) A savings of \$50,000 in little-used furniture, systems and cabinetry needed for extended cruising, and (2) A boat that's easier to handle, more comfortable in waves and more fun to sail for its size. J/105 has the stability, rig and sail controls to handle 15-20 knot winds without the need of reefing. It has the strength and seaworthiness for ocean going passages. Sailing World Magazine's panel of experts selected J/105 as Boat-of-the-Year among racer-cruisers in 1992. Since then over 600-plus have been launched worldwide, fulfilling a variety of needs. Enthusiasm for this great boat continues to blossom with an active owner's association and owner-maintained web site to help sailors get the most from their boat. J/105 is the most successful modern one-design keelboat class over 30 feet in the world. There are one-design starts in virtually every major sailing center across the US and several class starts across Europe. Singlehanded sailors race and cruise to Bermuda; an older couple enjoys cruising in Maine and winning the Monhegan Race after giving up their Alden 54; and America's Cup helmsman race for prize money around the country in a professional match racing circuit. J/105 makes sailing easier and smoother. No pitching, no rolling about and no panic drills. Gone are feverish routines of course and sail changes. Enjoy the luxury of a dodger while napping on full-length cockpit cushions. Only one jib to tend. Roll it in or out. The spinnaker is contained in a snuffer. Jibing is a one person operation. Simply let go the old sheet, then trim in the new one. Good-bye big racing crews and foredeck work. Hello fun and relaxation. Whether it's blowing 5 mph or 20 mph, sailors will want to set J/105's asymmetric spinnaker - even with just two people aboard.

Exclusions

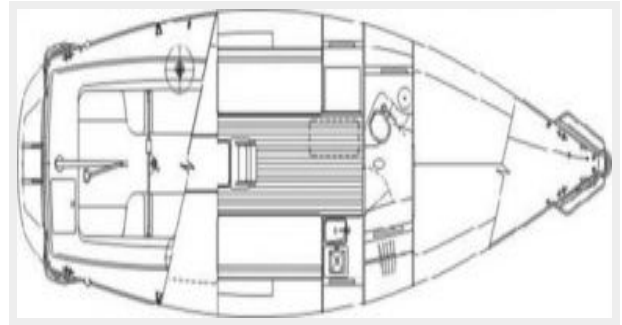
Owner's personal belongings.

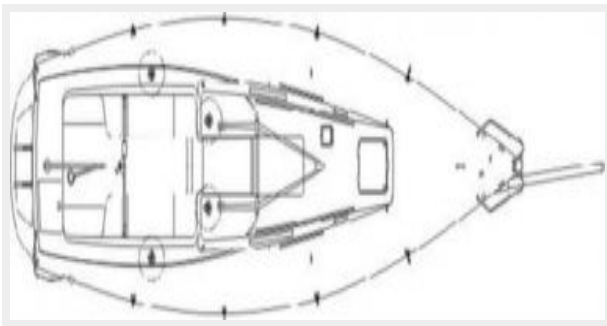
Disclaimer

The Company offers the details of this vessel or yacht in good faith but cannot guarantee or warrant the accuracy of this information nor warrant the condition of the vessel. A buyer should

instruct his representatives, agents, or his surveyors, to investigate such details as the buyer desires validated. This vessel or yacht is offered subject to prior sale, price change, or withdrawal without notice.

PHOTOS





CONTACTS

Andrey Shestakov, leading yacht broker of the sales department of Shestakov Yacht Sales Inc. Shestakov Yacht Sales Inc., the official representative of the Miami/Fort Lauderdale FL headquarters.

Contact details

Email: andrey@shestakovyachtsales.com

Web: shestakovyachtsales.com/en/

Telephones

USA: +1(954)274-4435

Office hours

Monday – Saturday: **9:00 - 21:00** EDT

Sunday: **closed**

Address



Harbour Towne Marina, 850 NE 3rd St,
STE 213, Dania, FL 33004