

SCARLET — AZIMUT



Builder: [AZIMUT](#)

Year Built: 2008

Model: Mega Yacht

Price: PRICE ON APPLICATION

Location: United States

LOA: 86' 0" (26.21m)

Beam: 19' 1" (5.82m)

Max Draft: 4' 5" (1.35m)

Cruise Speed: 30 Kts. (35 MPH)

Max Speed: 40 Kts. (46 MPH)

Our experienced yacht broker, Andrey Shestakov, will help you choose and buy a yacht that best suits your needs **Scarlet — AZIMUT** from our catalogue. Presently, at Shestakov Yacht Sales Inc., we have a wide variety of yachts available on our sale's list. We also work in close contact with all the big yacht manufacturers from all over the world.

If you would like to buy a yacht **Scarlet — AZIMUT** or would like help answering any questions concerning purchasing, selling or chartering a yacht, please call **+1(954)274-4435**

TABLE OF CONTENTS

TABLE OF CONTENTS	2
SPECIFICATIONS	6
Overview	6
Basic Information	6
Dimensions	6
Speed, Capacities and Weight	7
Accommodations	7
Hull and Deck Information	7
Engine Information	7
DETAILED INFORMATION	8
Description	8
Key Features	8
Recent Improvements	8
Recent Maintenance	9
Accommodations	9
Galley	10
Crew Quarters	11
Deck	11
Engine Room	11
Safety Equipment	11
Exclusions	11
Disclaimer	11
PHOTOS	13
2	13
3	13
5	13
4	13
9	13

6	13
11	14
8	14
13	14
7	14
10	14
12	14
19	14
14	14
16	15
15	15
17 Helm	15
18	15
29 Huge Sunroof	15
26	15
73 Crew 1	16
27	16
75 Crew Head	16
49 Spa Shower	16
74 Crew 2	17
22	17
30	17
32	17
25	17
41	17
20	18
45 VIP Cabin	18
21	18
23	18

24	18
51	18
31	18
53	18
59 Master Cabin	19
33	19
35	19
38	19
36	19
63 Master Cabin	19
40	19
37	19
39	20
42	20
70 Galley	20
68 Master Head	20
43	20
72 Galley	20
76	21
46 VIP Cabin	21
48	21
47 Queen Cabin	21
49	21
52	21
55	22
50	22
54	22
65 Master Cabin	22
61 Master Cabin	22

60 Master Cabin	22
69 Master Head	22
44 VIP Cabin	22
77	23
64 Master Cabin	23
62 Master Cabin	23
67 Master Head	23
66 Master Cabin	23
71 Galley	23
56	24
34	24
79	24
80	24
57	24
78	24
82	25
81	25
CONTACTS	26
Contact details	26
Telephones	26
Office hours	26
Address	26

SPECIFICATIONS

Overview

"Scarlet" is a very impressive yacht with her upgraded Hamilton Jet Drives and MTU 2000 HP powerplants. The water-jet version is definitely an exciting boat to drive and this is an important aspect for yachtsmen buying a high-performance boat. They want some excitement from the performance but it must be safe excitement, and here Azimut does seem to have gained an edge. In addition to the good high-speed aspects of the 86S there is the brilliant low-speed maneuvering from the joystick control. Her owner has now moved up to another larger Azimut and is willing to part her. Her successful reputation has produced positive revenues that have been possible to maintain her in proper YACHT condition at all times. As always, all her maintenance is up to date and ready to go.

Full-time Captain & Crew maintained

All Engine, Jet Drives and Generator service completed by certified mechanics

Full list of recent **REAL** Improvements in full specs

Full list of recent **Professional** general maintenance in the full specs

11' Avon Tender & Sea-Doo Spark Jet Ski are included in the sale.

4 Cabin version: Full Beam King Master, VIP Queen, Port Queen, Stbd Twin

Hamilton Jet Drives with Joystick Docking

Basic Information

Category: Mega Yacht

Model Year: 2008

Year Built: 2008

Country: United States

Cockpit: Yes

Dimensions

LOA: 86' 0" (26.21m)

Beam: 19' 1" (5.82m)

Max Draft: 4' 5" (1.35m)

Speed, Capacities and Weight

Cruise Speed: 30 Kts. (35 MPH)

Max Speed: 40 Kts. (46 MPH)

Displacement: 136687 Pounds

Water Capacity: 290 Gallons

Holding Tank: 100 Gallons

Fuel Capacity: 1584 Gallons

Accommodations

Total Cabins: 4

Total Berths: 5

Sleeps: 8

Total Heads: 4

Crew Cabin: 2

Crew Berths: 3

Crew Sleeps: 3

Crew Heads: 1

Hull and Deck Information

Hull Material: Fiberglass

Hull Configuration: Deep Vee

Hull Color: Red

Hull Designer: Stefano Righini

Engine Information

Engines: 2

Manufacturer: MTU

Model: 16V 2000 M91

Engine Type: Inboard

Fuel Type: Diesel

DETAILED INFORMATION

Description

"Scarlet" is a very impressive yacht with her upgraded Hamilton Jet Drives and MTU 2000 HP powerplants. The water-jet version is definitely an exciting boat to drive and this is an important aspect for yachtsmen buying a high-performance boat. They want some excitement from the performance but it must be safe excitement, and here Azimut does seem to have gained an edge. In addition to the good high-speed aspects of the 86S there is the brilliant low-speed maneuvering from the joystick control. Her owner has now moved up to another larger Azimut and is willing to part her. Her successful reputation has produced positive revenues that have been possible to maintain her in proper YACHT condition at all times. As always, all her maintenance is up to date and ready to go.

Key Features

- Full-time Captain & Crew maintained
- All Engine, Jet Drives and Generator service completed by certified mechanics
- Full list of recent REAL Improvements in full specs
- Full list of recent Professional general maintenance in the full specs
- 11' Avon Tender & Sea-Doo Spark Jet Ski are included in the sale.
- 4 Cabin version: Full Beam King Master, VIP Queen, Port Queen, Stbd Twin
- Hamilton Jet Drives with Joystick Docking

Recent Improvements

Layout and Deck:

- Reconfigured port stateroom from 2 Twins to Queen
- Reconfigured garage with a 2nd hydraulic winch. Storage for 2 large craft, (Tender or wave runners)
- Increased general storage capacity
- Stainless Steel support poles for complete aft section canvas shade.
- 2 new higher capacity Water Heaters
- Higher capacity black water pump

Electrics:

- New inverted washer and dryer
- Custom Accent Lights throughout
- Galley: Miele 4 burner cooktop Miele convection oven Miele dishwasher 60 bottle wine cooler

Audio Visual Electronics Package:

- JL Audio 3000 watt amplifier 6 speaker system plus subwoofer
- Salon: KVH hd Satellite TV for USA New 4k 50" sony xbr with apple tv and blu ray and direct tv. Bose Surround Sound interior sound system
- Master and Guest staterooms Samsung 4K flatscreen Sonos Launchport Av control pad
- New Navigational Electronics Package: Humphree Auto Trim & Stabilizer System Nightvision infrared camera Engine room Aft deck camera Raymarine radar / scanner Raymarine Depth sounder transducer (built-in flush) Dual Raymarine 17" Hybrid touch GPS units VHF Antennas UPS power supply ACR 1500 searchlight Triple Kallenberg horns

Fabrics and Softgoods:

- Custom made pillow-top mattresses
- Custom Designer Interior Fabrics
- Full set of Terrycloth exterior cushion covers
- Salon has custom Silk curtains and Custom Carpet
- V Cool Film on all windows

Recent Maintenance

- All Engine, Jet Drives and Generator service completed by certified mechanics (2017)
- MTU Certified 2000 Hr Service (QL2)
- Certified Hamilton Jet/ Nozzle inspection and new seals
- Full set of battery chargers
- New Shore Power Cord
- Bottom Paint and Zincs
- Replaced exhaust covers
- AC units acid washed
- Fuel Tanks and System Polished
- Sunroof Service - New motors and seals

Accommodations

4 Stateroom layout sleeps 8 plus 3 separate crew. (Full Beam King Master, VIP Queen, Port Queen, Starboard (2) Twin)

Salon

- Sliding Sunroof
- Custom Silk Curtains
- V Cool Film on all windows

Master

- King Size bed
- Settee table with 2 loungers under port hull side windows
- Vanity table on the starboard side
- Cabins carpet, heads wood flooring.
- New Samsung 4K flatscreen
- Sonos Launchport Av control pad
- Mini Fridge
- Panoramic windows and portholes
- Custom made spring/pillow top mattress
- Samsung 4K TV
- Wenge wood cabinetry.
- Ensuite Vacuflush Head
- Spa Shower

VIP Cabin

- Queen Size bed
- Custom made spring/pillow top mattress
- Samsung 4K TV
- Wenge wood cabinetry.
- Ensuite Vacuflush Head
- Spa Shower
- Cabins carpet, heads wood flooring.

Queen Guest Cabin

- Custom made spring/pillow top mattress
- Samsung 4K TV
- Wenge wood cabinetry.
- Ensuite Vacuflush Head
- Spa Shower

Twin Guest Cabin

- Custom made spring/pillow top mattress
- Samsung 4K TV
- Wenge wood cabinetry.
- Ensuite Vacuflush Head
- Spa Shower

Galley

- Galley down layout

- All New Miele appliances
- Stainless fridge and freezer
- Sink disposal
- Stainless Steel Chef's countertop
- Icemaker

Crew Quarters

- 3 Berths in 2 separate cabins with shared head

Deck

- Fridge, BBQ, and Sink in the bar cabinet on the aft deck
- Huge Sunpads on Aft and forward decks
- Freshwater shower with non-skid surface applied around the stern
- Upgraded heavy duty swim ladder and stern railings

Engine Room

- 2 x 16V2000 M91 - 2040 Hrs.
- Double Racor Filters
- Generators: 2 x 22Kw Kohler (824 and 553 hrs since rebuild)
- Idromar water maker
- Cruisair AC Compressors
- Oil Change system
- Cameras

Safety Equipment

- (2) 12 person inspected Liferrafts
- Life Jackets
- USCG Safety kit

Exclusions

Owner's personal belongings.

Disclaimer

The Company offers the details of this vessel or yacht in good faith but cannot guarantee or warrant the accuracy of this information nor warrant the condition of the vessel. A buyer should instruct his representatives, agents, or his surveyors, to investigate such details as the buyer desires validated. This vessel or yacht is offered subject to prior sale, price change, or withdrawal without notice.

PHOTOS

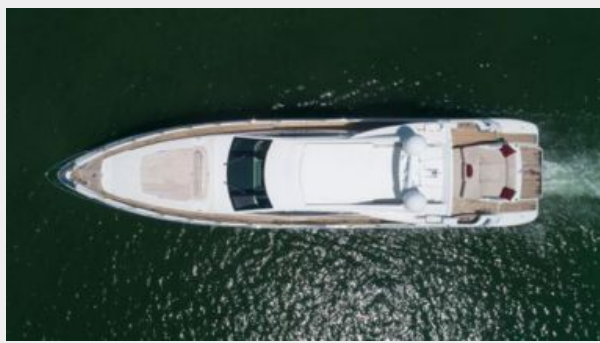
2



3



5



4



9



6



11



8



13



7



10



12



19



14



16



15



17 Helm



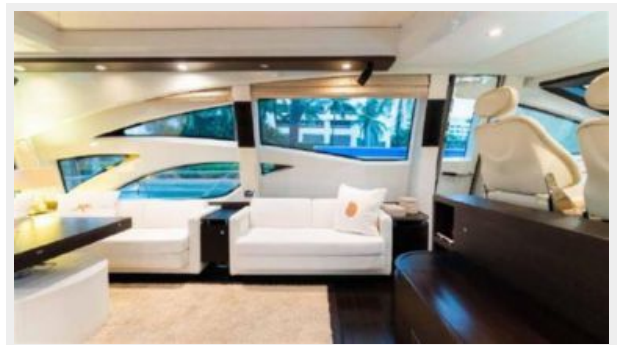
18



29 Huge Sunroof



26



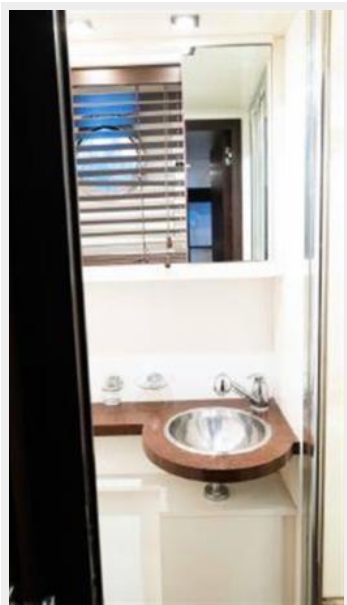
27



73 Crew 1



75 Crew Head

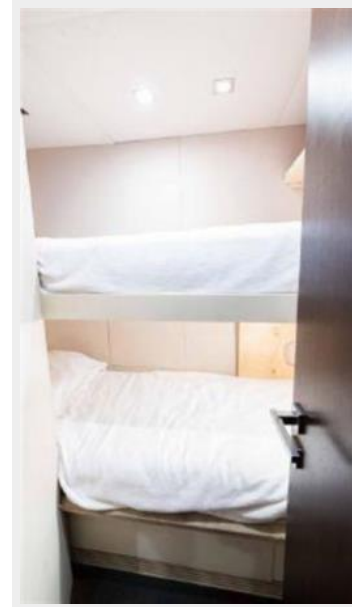


49 Spa Shower



74 Crew 2

22



30



32



25



41



20



45 VIP Cabin



21



23



24



51



31



53



59 Master Cabin



33



35



38



36



63 Master Cabin



40



37



39



42



70 Galley



68 Master Head



43



72 Galley



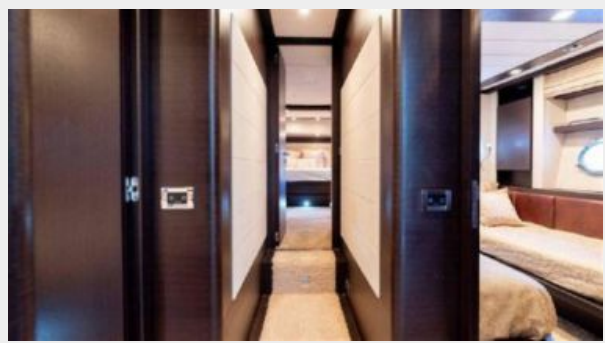
76



46 VIP Cabin



48



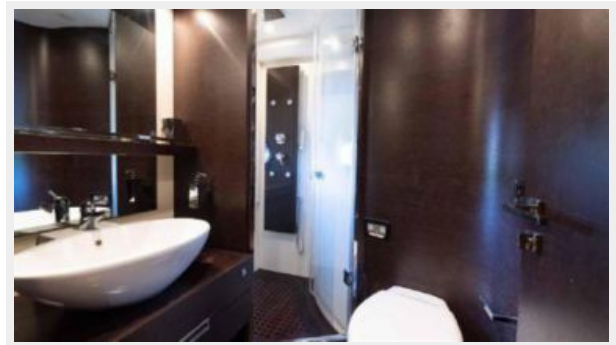
47 Queen Cabin



49



52



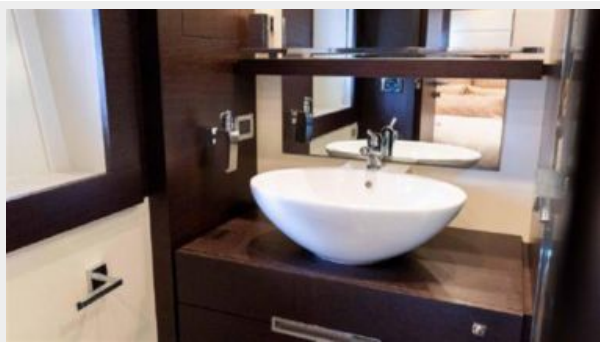
55



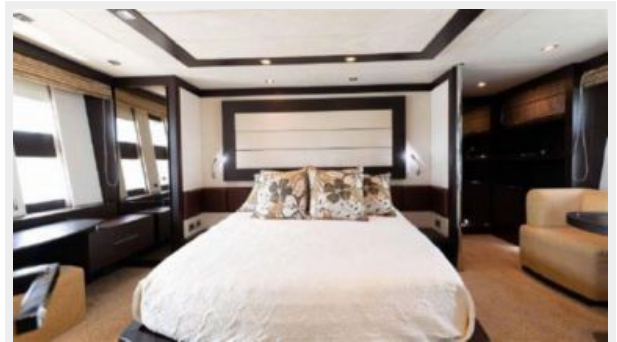
50



54



65 Master Cabin



61 Master Cabin



60 Master Cabin



69 Master Head



44 VIP Cabin



64 Master Cabin



77



62 Master Cabin



67 Master Head



66 Master Cabin



71 Galley



56



34



79



80



57



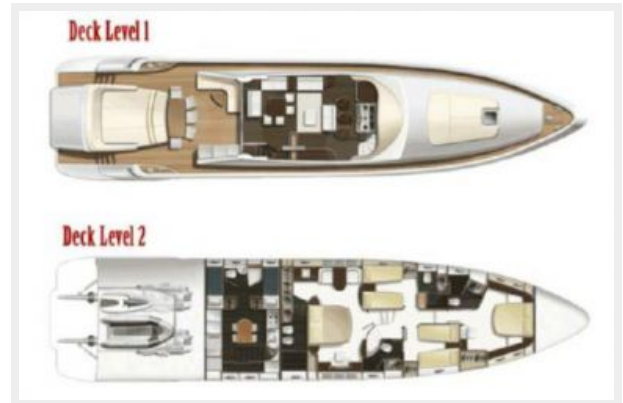
78



81



82



CONTACTS

Andrey Shestakov, leading yacht broker of the sales department of Shestakov Yacht Sales Inc. Shestakov Yacht Sales Inc., the official representative of the Miami/Fort Lauderdale FL headquarters.

Contact details

Email: andrey@shestakovyachtsales.com

Web: shestakovyachtsales.com/en/

Telephones

USA: +1(954)274-4435

Office hours

Monday – Saturday: **9:00 - 21:00** EDT

Sunday: **closed**

Address



Harbour Towne Marina, 850 NE 3rd St,
STE 213, Dania, FL 33004